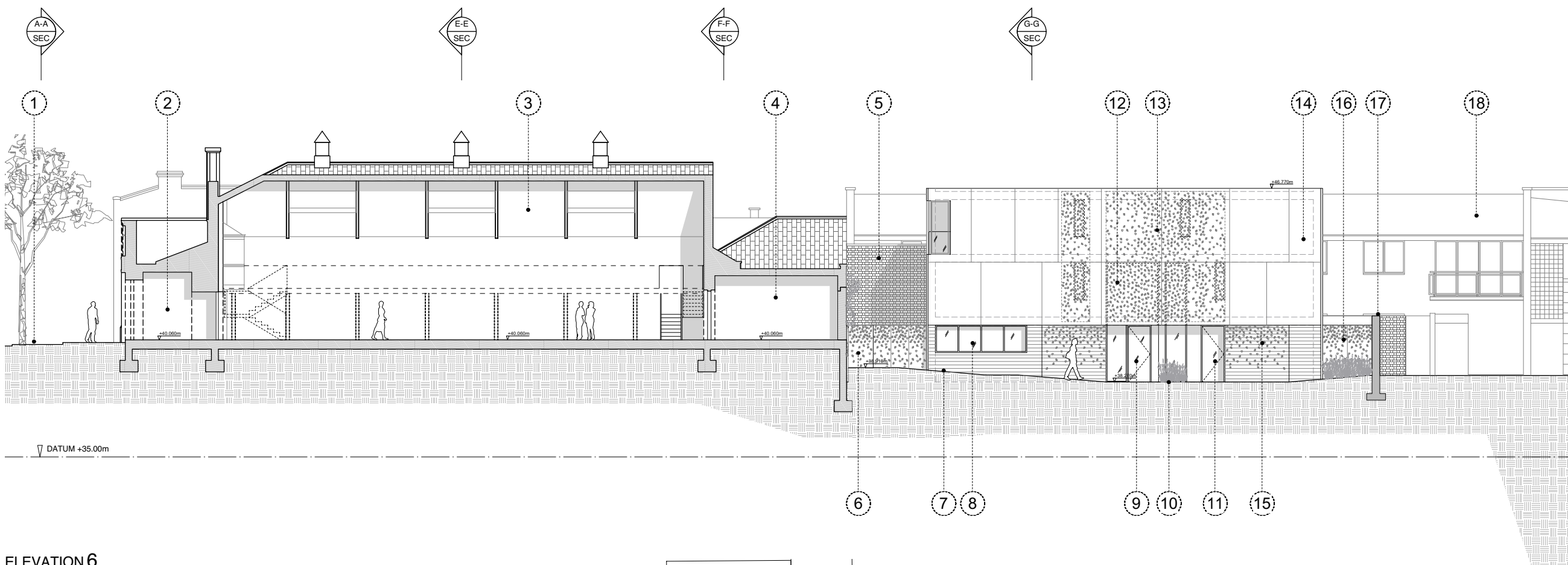


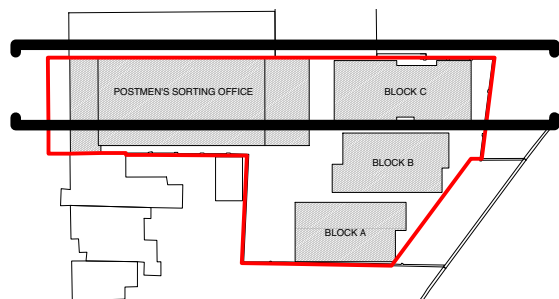
- 1. Boundary wall and arches to Kentish Town Underground Station.
- 2. Parking area for Medical Centre.
- 3. Brick boundary wall.
- 4. Proposed Block C: pigmented concrete with smooth finish to first and second floor.
- 5. Planting to boundary walls in Medical Centre approach.
- 6. Brick boundary wall.
- 7. Medical Centre.
- 8. Postmen's Sorting Office.
- 9. Medical Centre.

ELEVATION 5



- 1. Leighton Road.
- 2. Communal Allotment space.
- 3. Postmen's Sorting Office space.
- 4. Office space.
- 5. Brick boundary wall with planting in front.
- 6. Perforated metal panel fence, with gate access to Live/ Work courtyards.
- 7. Ramped access to excavated level.
- 8. Window to Work space in Live/ Work unit.
- 9. Entrance to Block C for Live/ Work units and 1-bed apartments on second floor.
- 10. Grasses and Reed planting to metal grille and drainage area in front of glazing to maisonette.
- 11. Entrance to 2-bed maisonette.
- 12. Glazing continued behind perforate sections.
- 13. Filigree style perforations in pigmented concrete panels.
- 14. Proposed Block C. Pigmented concrete panels with smooth finish to upper levels.
- 15. Pigmented concrete with textured finish to lower levels of Block C.
- 16. Perforated metal panel fence to maisonette courtyard.
- 17. Existing brick boundary wall reduced in height along southern wall by 3/4 brick courses.
- 18. Medical Centre.

ELEVATION 6



DO NOT SCALE OFF THIS DRAWING ALL AMBIGUITIES OR DISCREPANCIES TO BE REPORTED TO ARCHITECT BEFORE COMMENCING		Revisions	Project	
Notes		Date:	Rev:	Details:
			STUDIO MACKERETH ARCHITECTS 78 ST PANCRAS WAY LONDON NW1 0PB TELEPHONE +44 (0)20 7042 8335 EMAIL: INFO@STUDIOMACKERETH.COM	
		Project No. 015 Drawing Title: Proposed Elevations 5 & 6 Scale: 1:200 @ A3 Creation Date: April 2015		
		Status: Plan	Project No. 015	Drawing No. 155
				Revision: -

