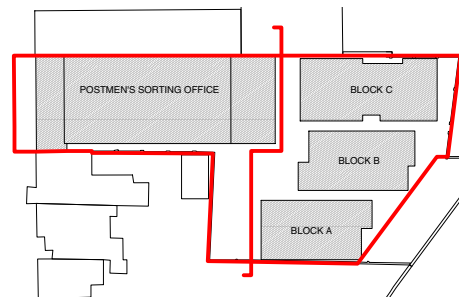
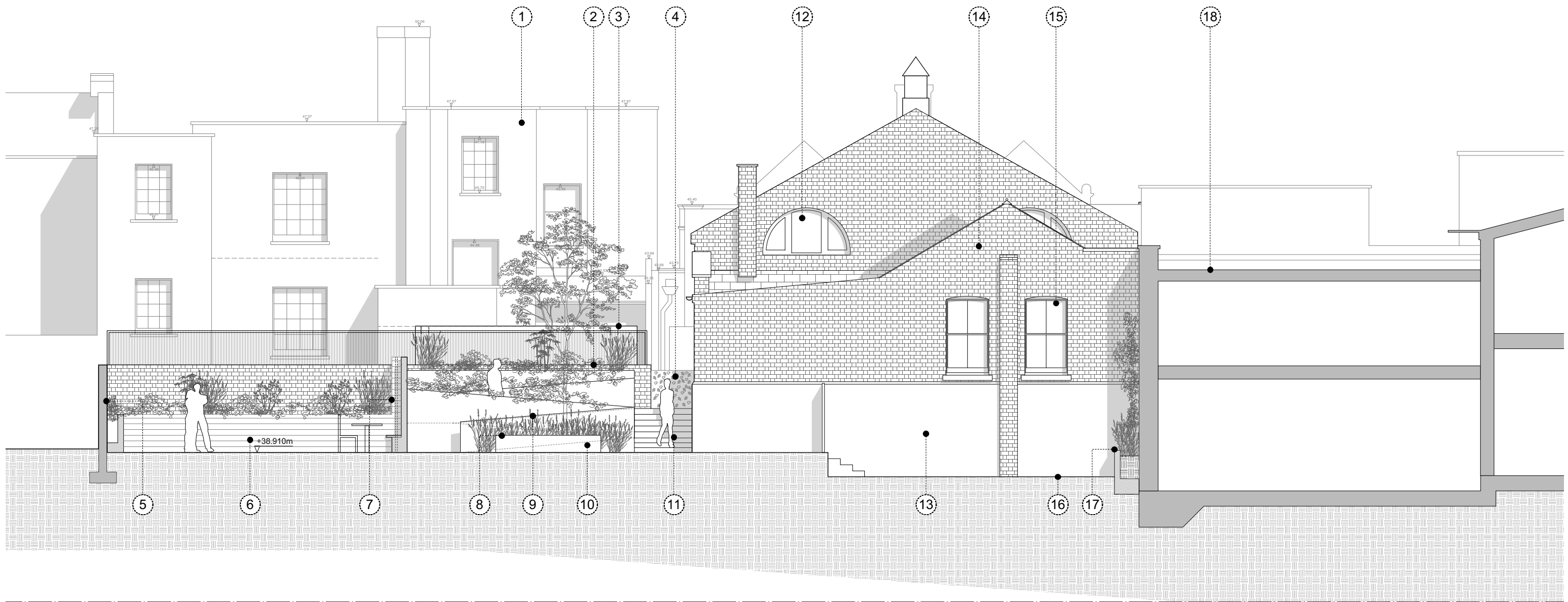
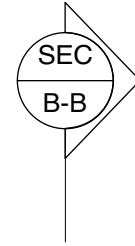
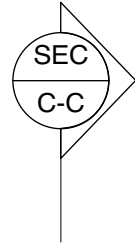
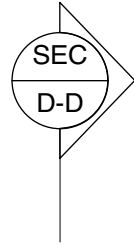


1. Neighboring house, No. 00 Leighton Road.
2. Brick boundary wall.
3. New trellis to replace existing and continue along boundary wall; to height of existing shed in neighboring garden.
4. Perforated metal balustrade.
5. Brick boundary wall.
6. Pigmented concrete planter and retaining wall to match pigment of adjacent block.
7. Garden walls in pigmented concrete and perforated metal panel sections.
8. Feature tree at arrival space.
9. Smooth finish, aggregated concrete planters to proposed ramp.
10. Metal, perforated bench.
11. Steps with granite effect paving.
12. Existing windows repaired.
13. Existing upstand reinstated to excavated levels.
14. Brick cleaned and repaired.
15. Existing windows retained and repaired.
16. Excavated level for Block C and courtyard space.
17. Pigmented concrete planter to boundary wall (accommodating retaining elements for excavations).



DO NOT SCALE OFF THIS DRAWING
ALL AMBIGUITIES OR DISCREPANCIES TO BE REPORTED TO ARCHITECT BEFORE COMMENCING

Notes	Revisions	Date	Rev	Details

STUDIO MACKERETH

ARCHITECTS
78 ST PANCRAS WAY
LONDON
NW1 0PB

TELEPHONE +44 (0)20 7042 8335
EMAIL: INFO@STUDIOMACKERETH.COM

Status

Plan

Project No.

015

Drawing No.

153

Revision

-

Project
30 Leighton Road

Drawing Title
Proposed Elevation 3

Scale
1:100 @ A3

Creation Date
April 2015