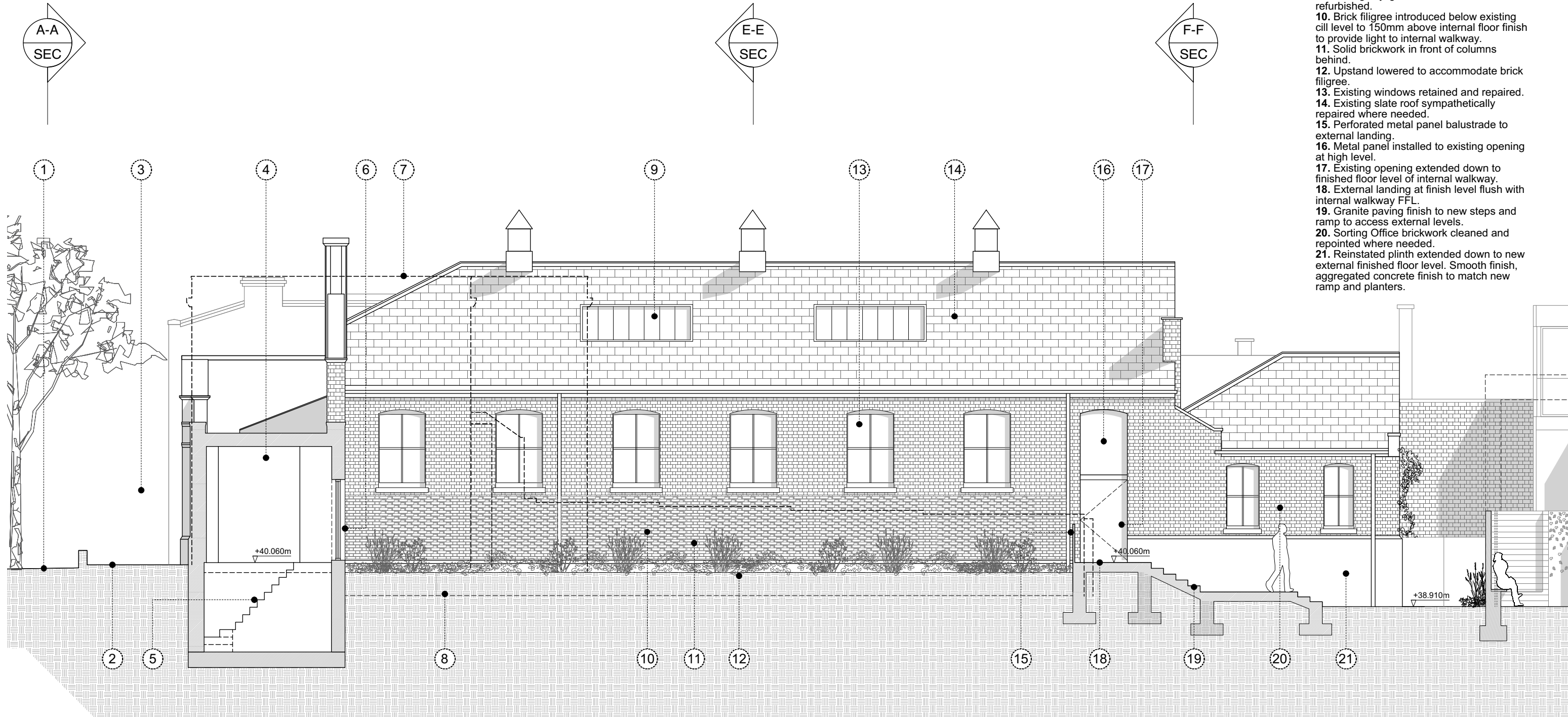
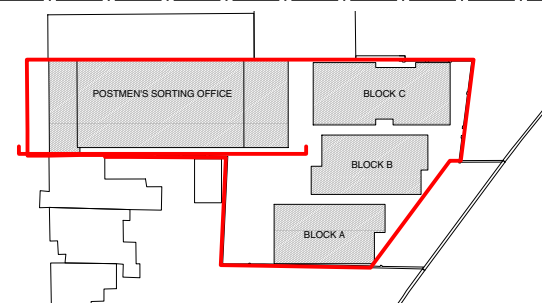
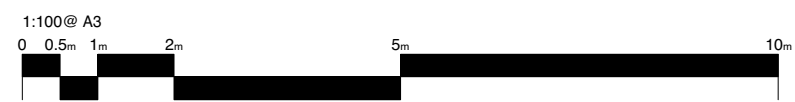


1. Leighton Road.
2. New paving to entrance area.
3. Perforated metal panel bin enclosure; below existing cill level.
4. Renovated entrance area to access office spaces and internal walkway.
5. Renovated stairs to basement areas to provide access to WC's.
6. Perforated metal panel for access to planting for maintenance.
7. Outline of neighboring house in foreground.
8. Existing path excavated to common level, with low level, low maintenance planting.
9. Existing skylights retained and refurbished.
10. Brick filigree introduced below existing cill level to 150mm above internal floor finish to provide light to internal walkway.
11. Solid brickwork in front of columns behind.
12. Upstand lowered to accommodate brick filigree.
13. Existing windows retained and repaired.
14. Existing slate roof sympathetically repaired where needed.
15. Perforated metal panel balustrade to external landing.
16. Metal panel installed to existing opening at high level.
17. Existing opening extended down to finished floor level of internal walkway.
18. External landing at finish level flush with internal walkway FFL.
19. Granite paving finish to new steps and ramp to access external levels.
20. Sorting Office brickwork cleaned and repointed where needed.
21. Reinstated plinth extended down to new external finished floor level. Smooth finish, aggregated concrete finish to match new ramp and planters.



▽ DATUM +35.00m



DO NOT SCALE OFF THIS DRAWING ALL AMBIGUITIES OR DISCREPANCIES TO BE REPORTED TO ARCHITECT BEFORE COMMENCING		Revisions		Project	
Notes		Date:	Rev:	30 Leighton Road	
		Details:		Drawing Title	
				Proposed Elevation 2	
				Scale	Creation Date
				1:100 @ A3	April 2015
Status	Project No.	Drawing No.	Revision		
Plan	015	152	-		

STUDIO MACKERETH
 ARCHITECTS
 78 ST PANCRAS WAY
 LONDON
 NW1 0PB
 TELEPHONE +44 (0)20 7042 8335
 EMAIL: INFO@STUDIOMACKERETH.COM