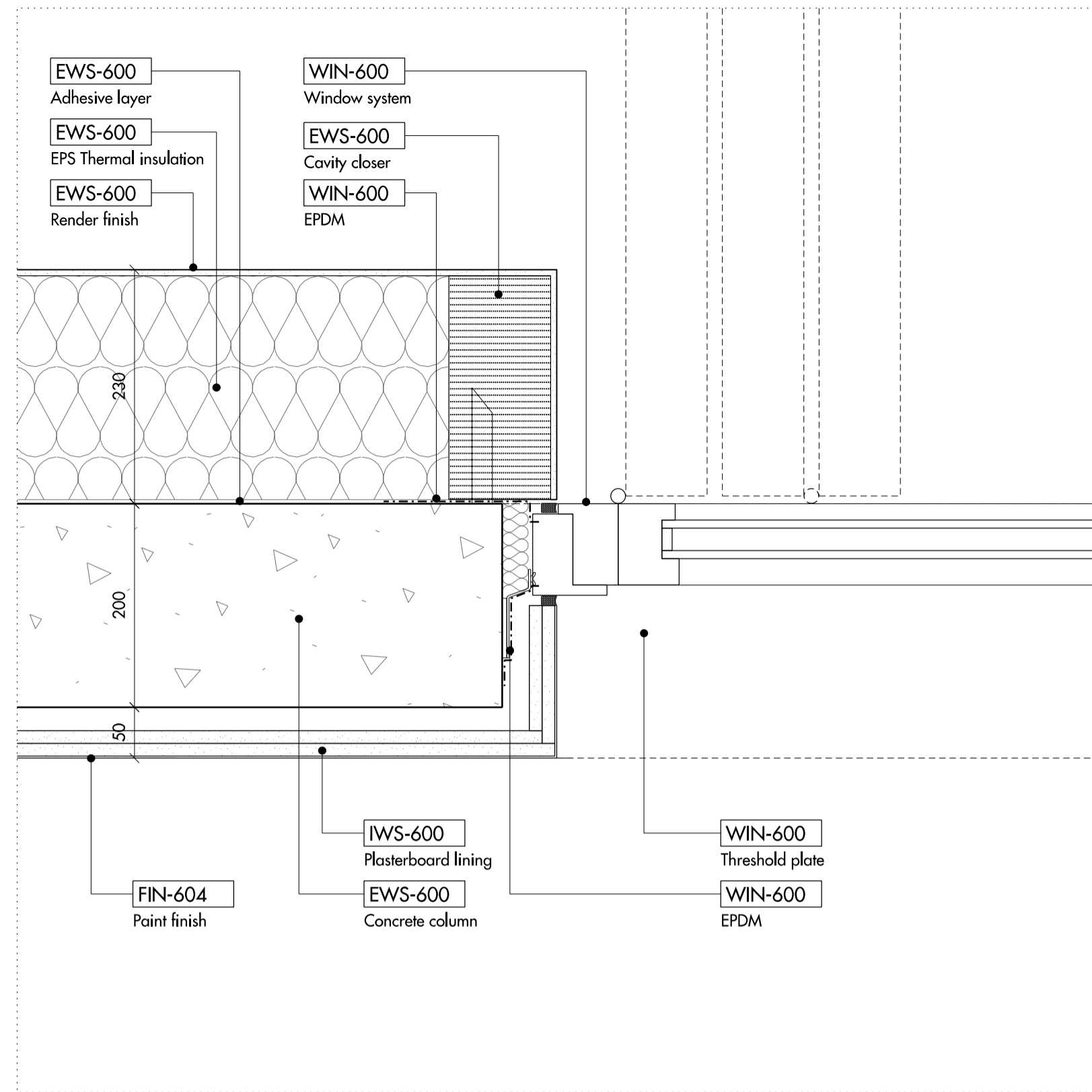
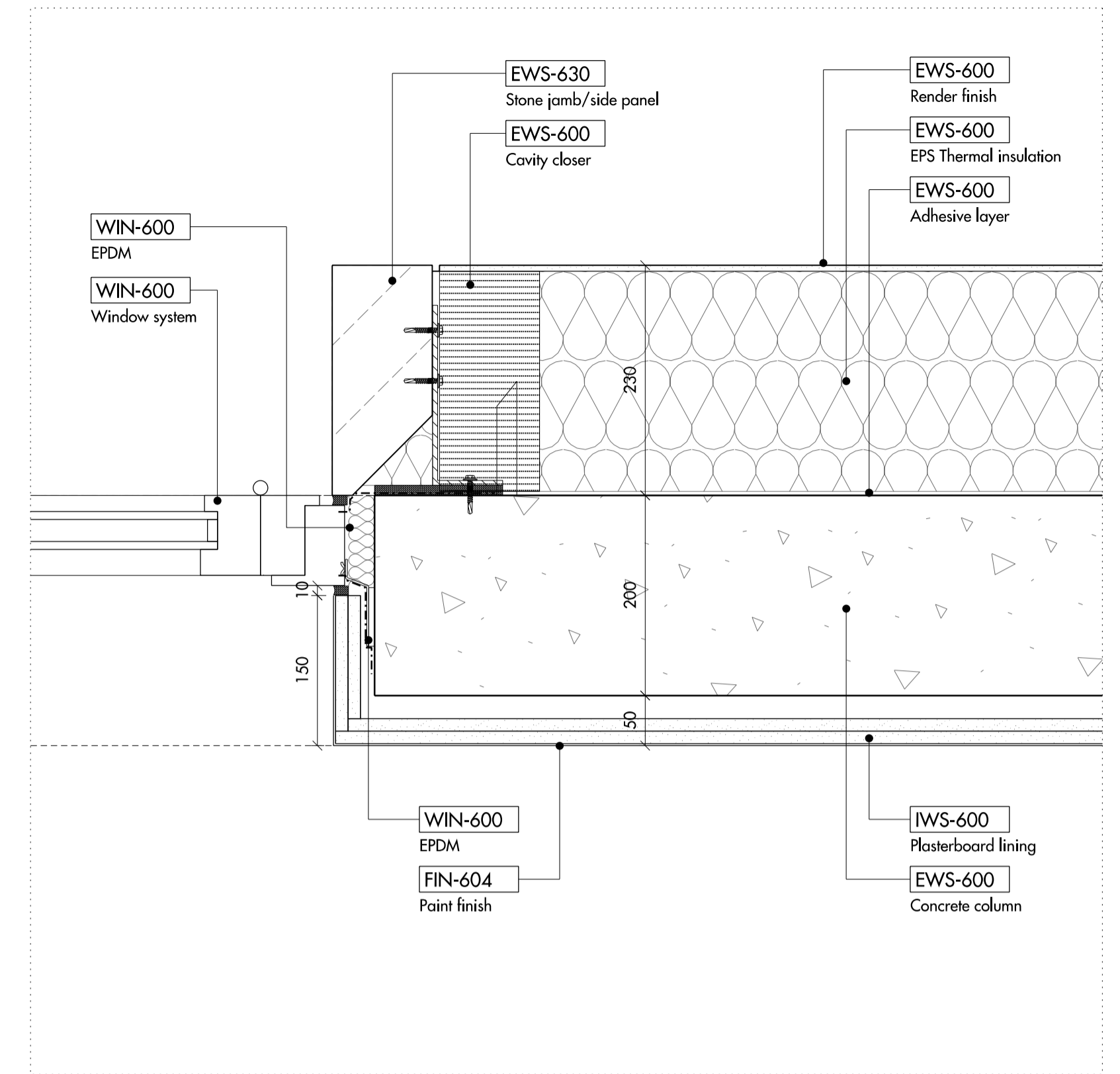


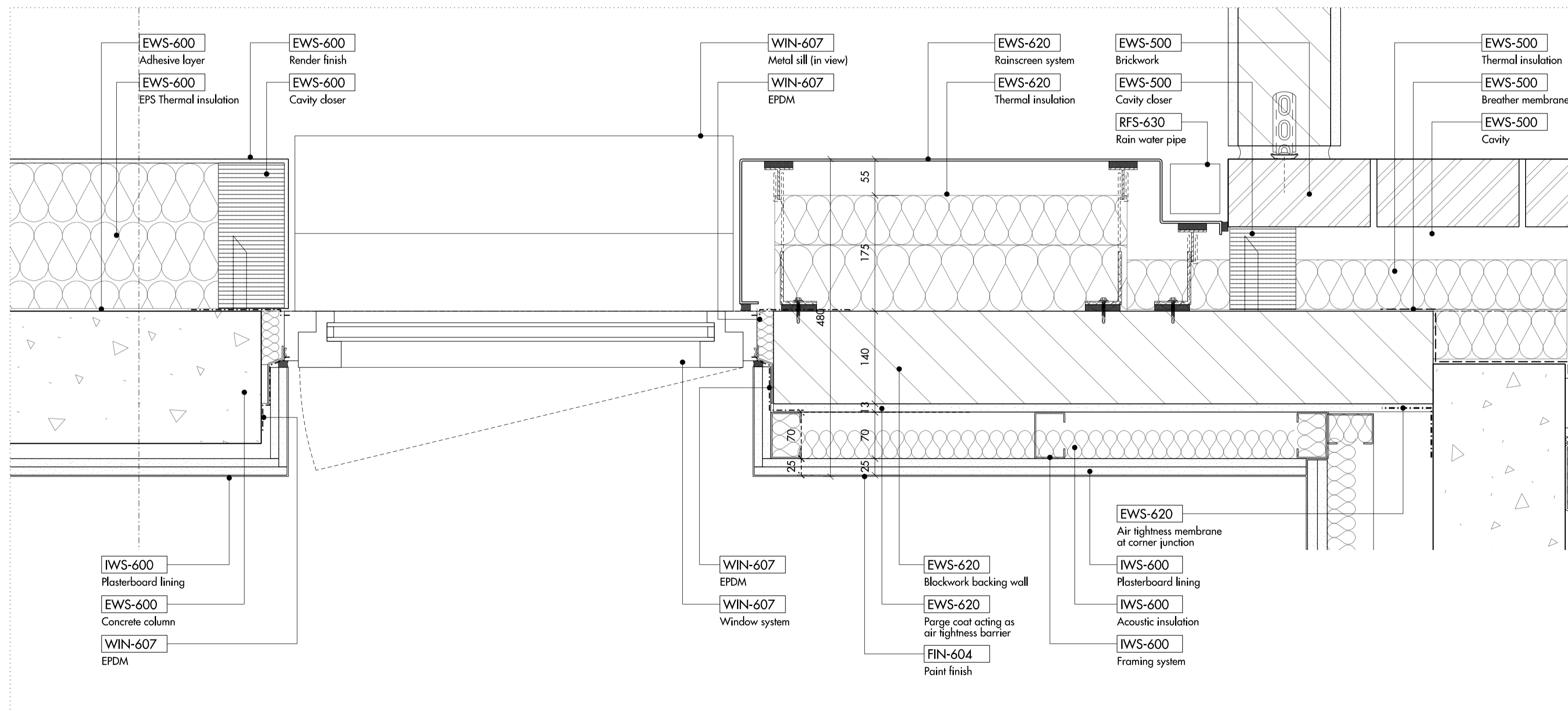
01 JAMB DETAIL WITH RENDER - FIXED WINDOW



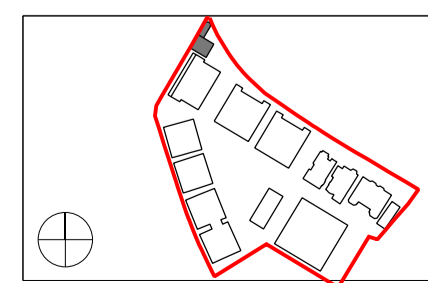
02 JAMB DETAIL WITH RENDER - FOLDING SLIDING WINDOWS



03 JAMB DETAIL WITH STONE CLAD PANEL - FOLDING SLIDING WINDOWS



04 JAMB DETAIL WITH METAL RAINSCREEN AND BRICK WALL INTERFACE



Do not scale from this drawing. Use figured dimensions only. Figured dimensions are in millimetres. All levels are in metres. All dimensions and levels shall be verified on site before proceeding with works. Detailed site survey to be carried out to verify positions and level relationships with site features and ordnance survey. Boundaries are indicative only and are to be verified by others. The architect must be notified of any discrepancy. Where building components are described in the specification as contractor designed, "construction" information relating to those components on this drawing represents design intent only.

REV	DATE	DESCRIPTION	CKD	REV	DATE	DESCRIPTION	CKD
T1	24.07.2015	ISSUED FOR TENDER	NR				

Allies and Morrison  
 85 Southwark Street  
 London SE1 0HX  
 020 7921 0100  
 020 7921 0101  
 info@alliesandmorrisson.co.uk  
 telephone  
 facsimile  
 email  
 A&M JOB NO: 809

KIDDERPORE AVENUE: BLOCK K2  
 EXTERNAL WALL DETAILS  
 PLAN - SHEET 1  
 809\_06\_21\_510  
 SCALE: 1:5 @A1 1:10 @A3