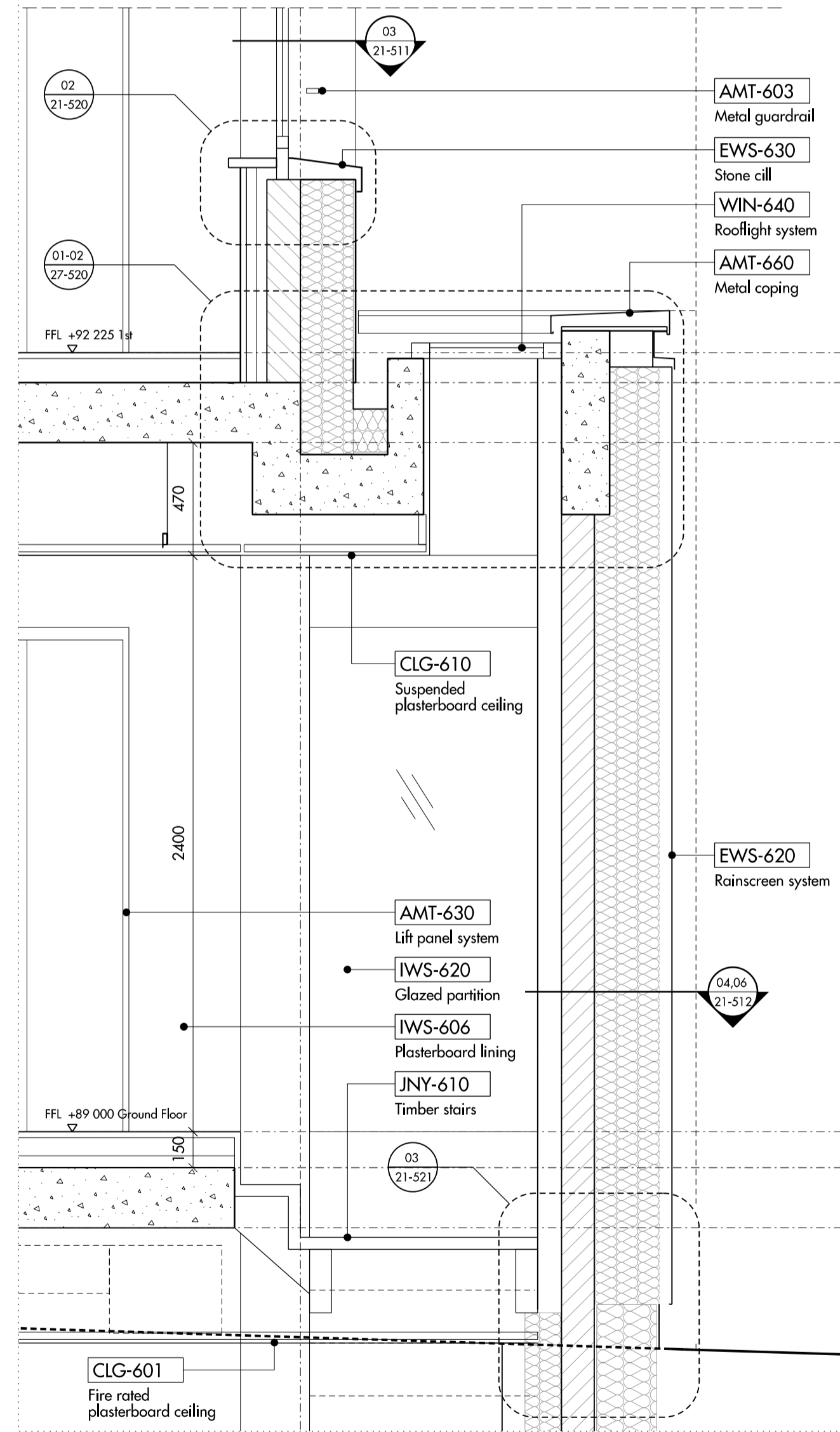
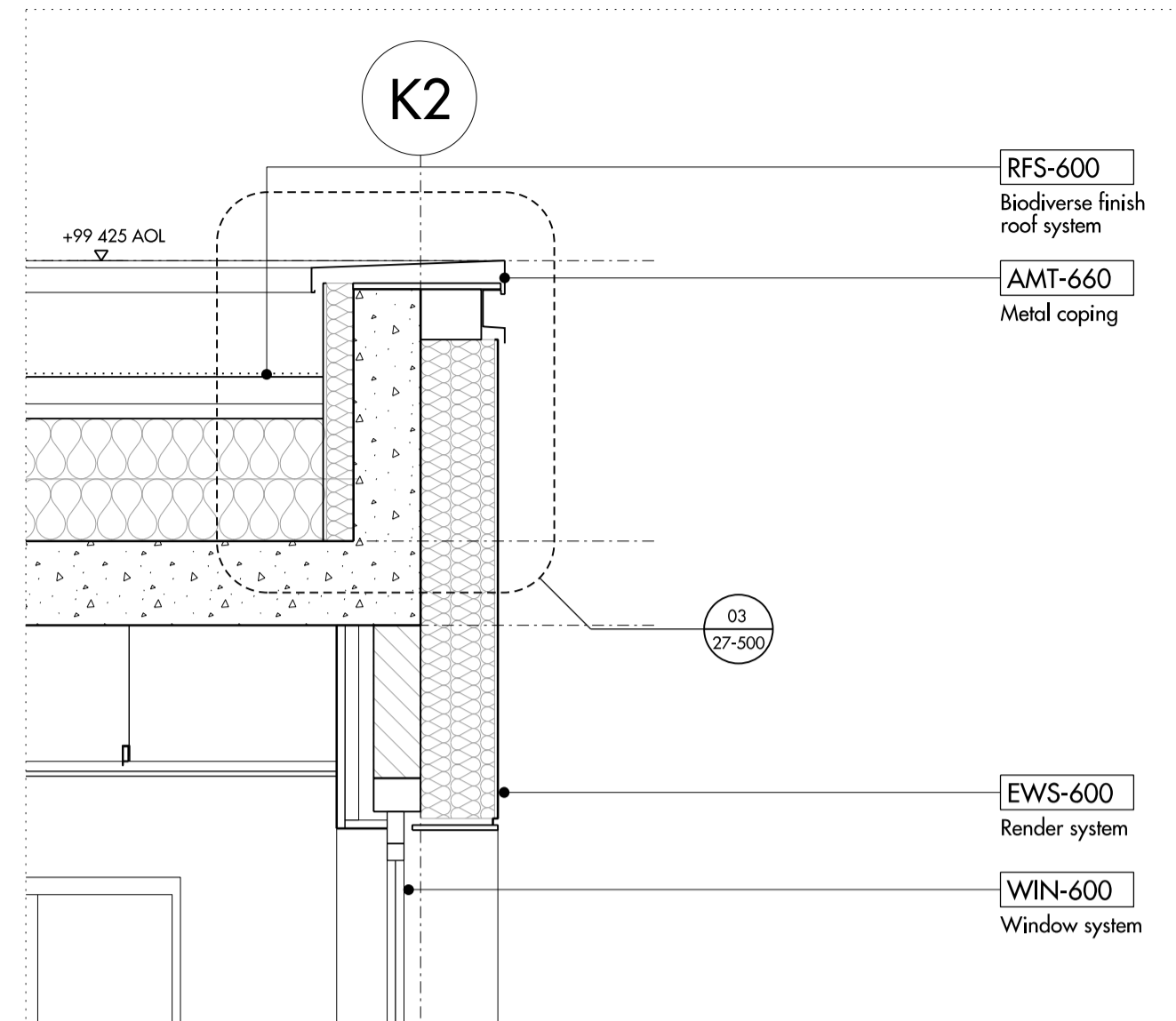
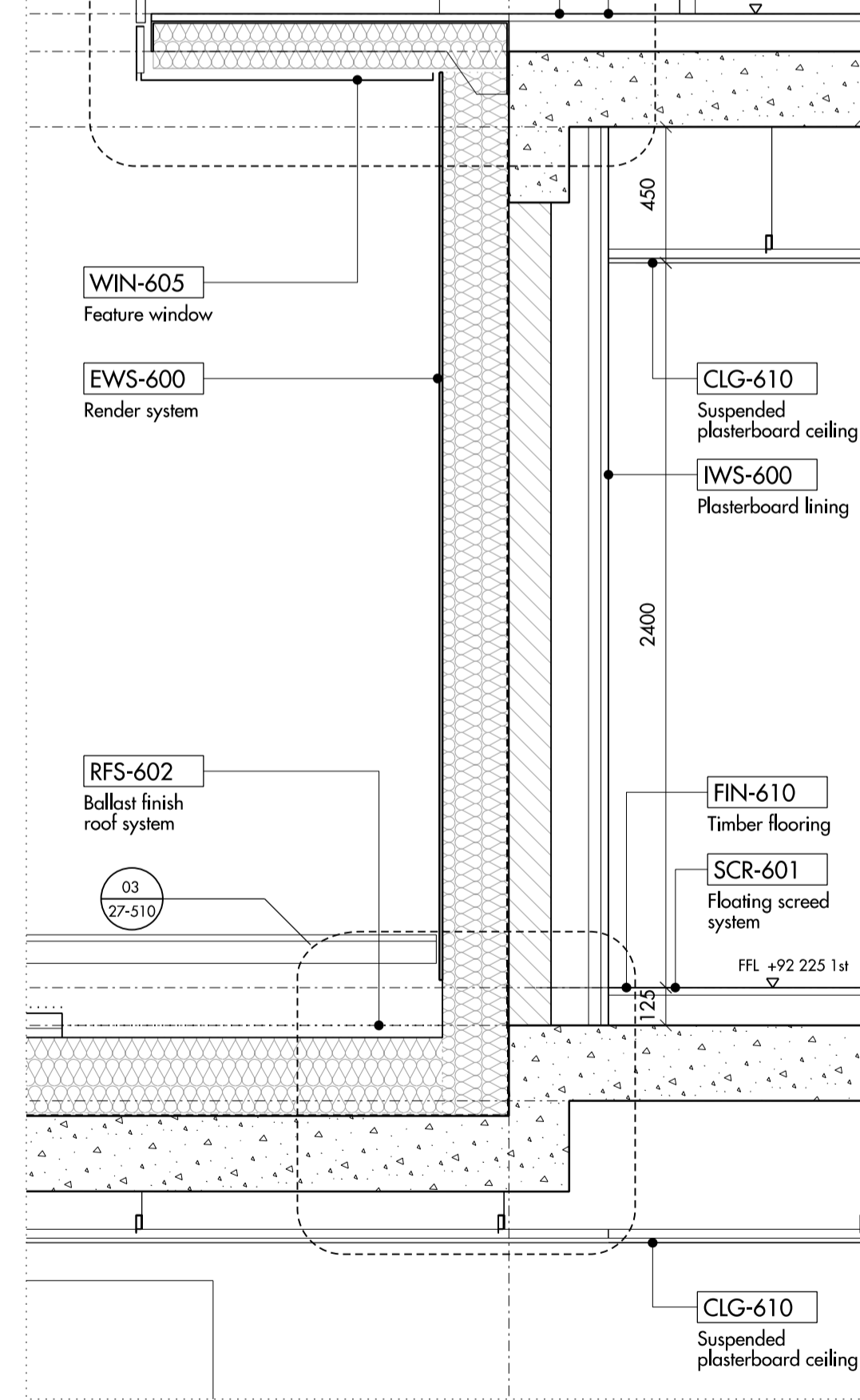
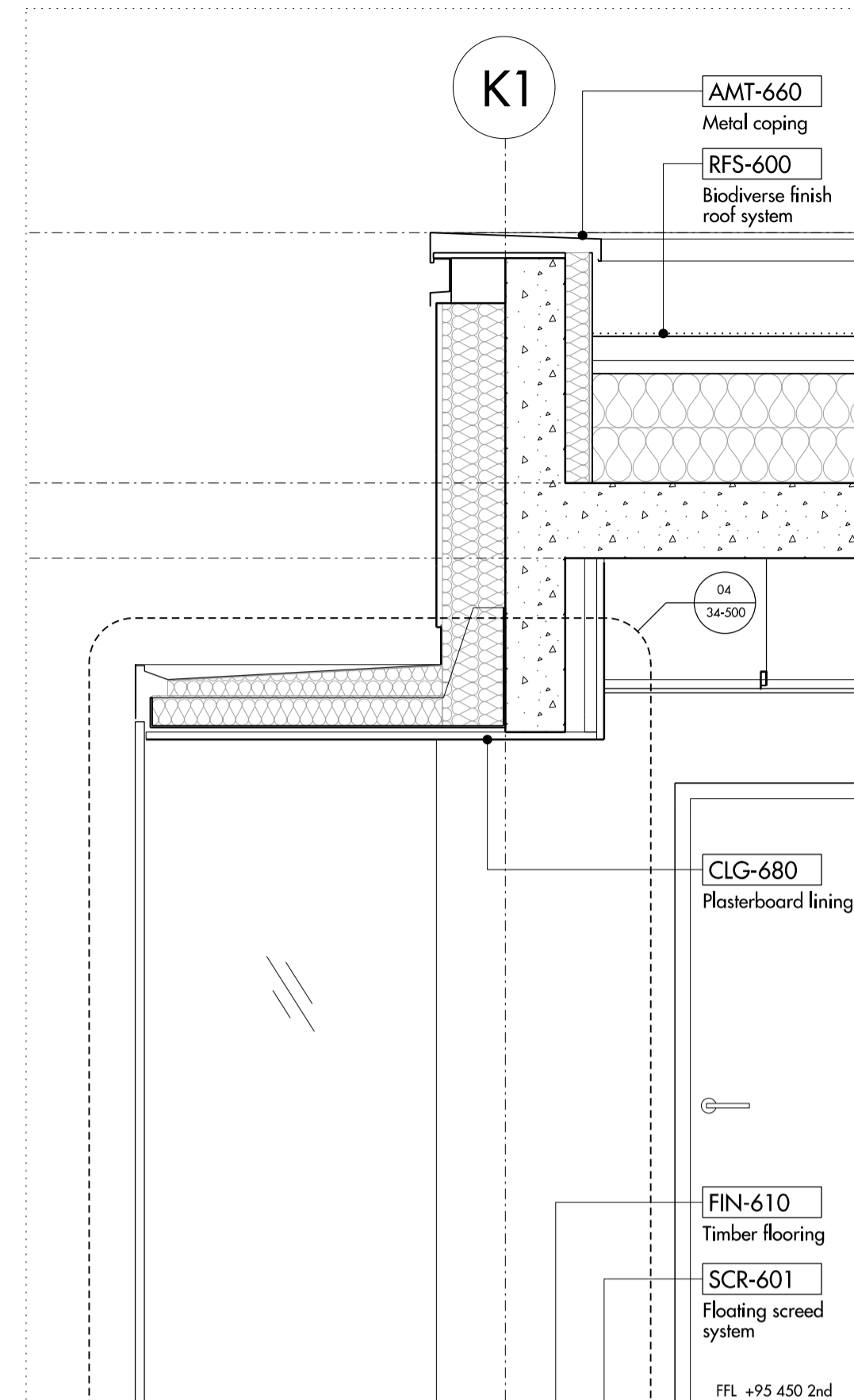


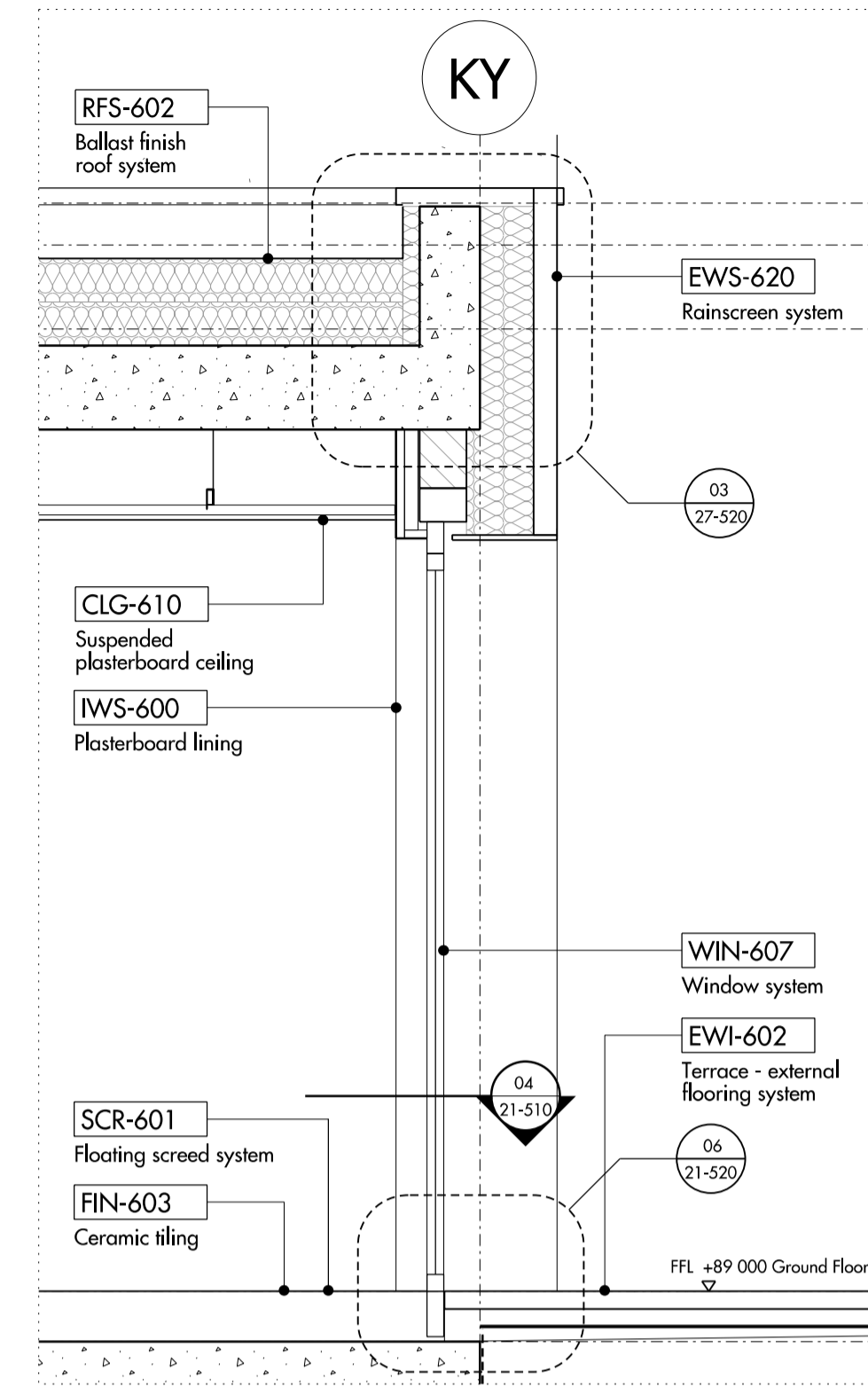
01 BLOCK K2/ SECTION 1



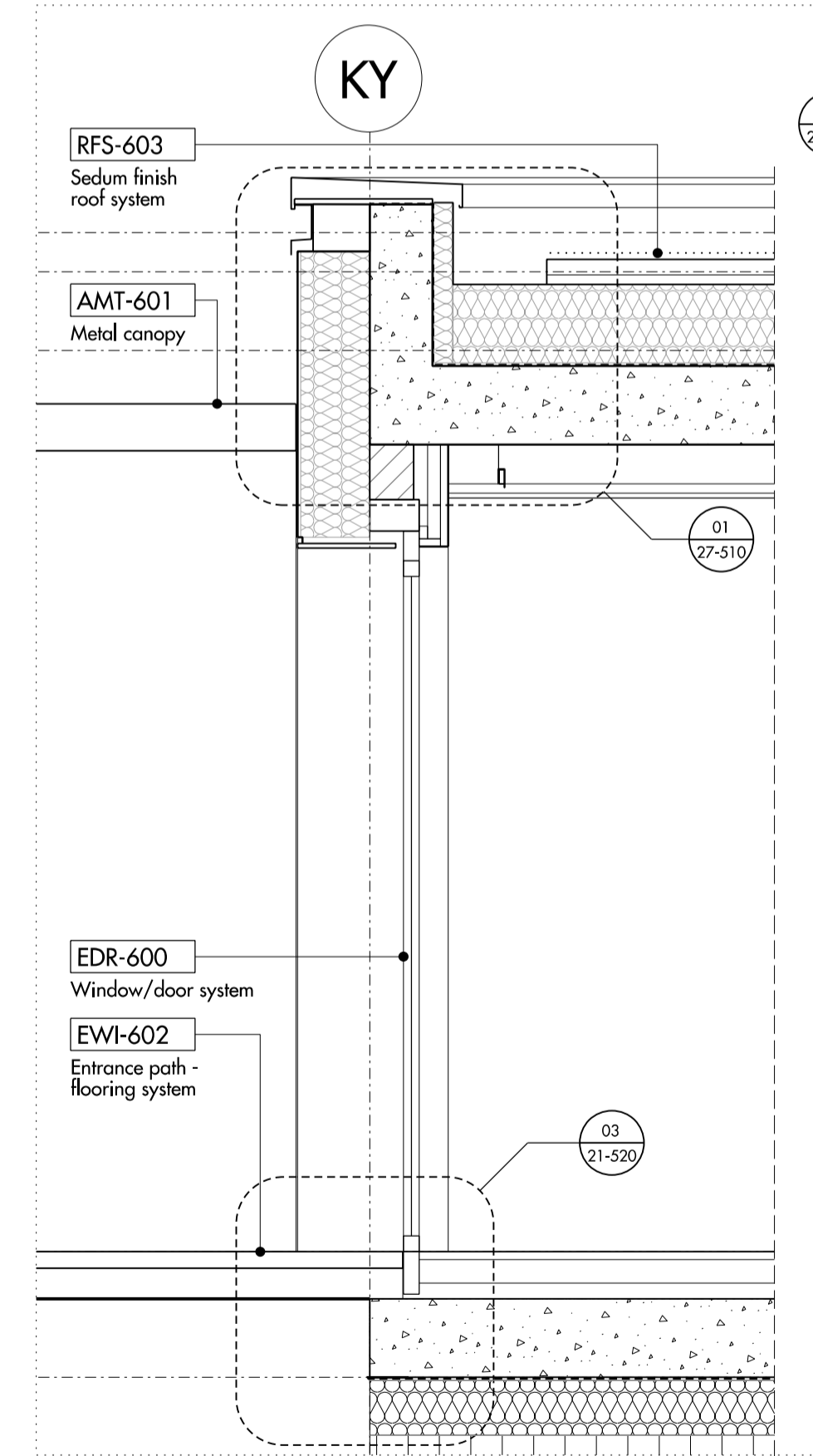
02 BLOCK K2/ SECTION 2



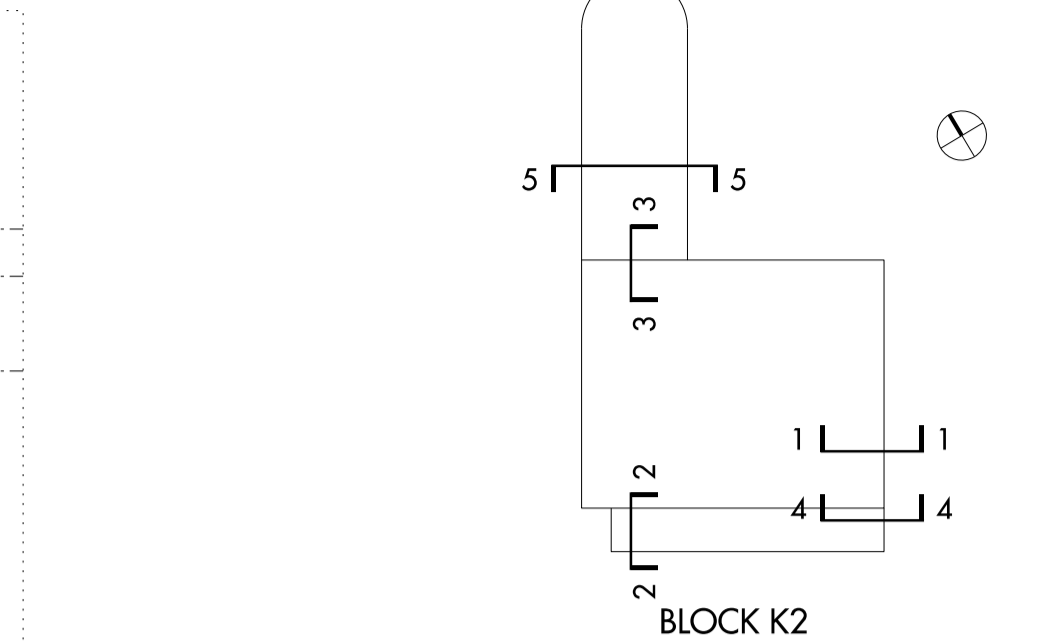
03 BLOCK K2/ SECTION 2



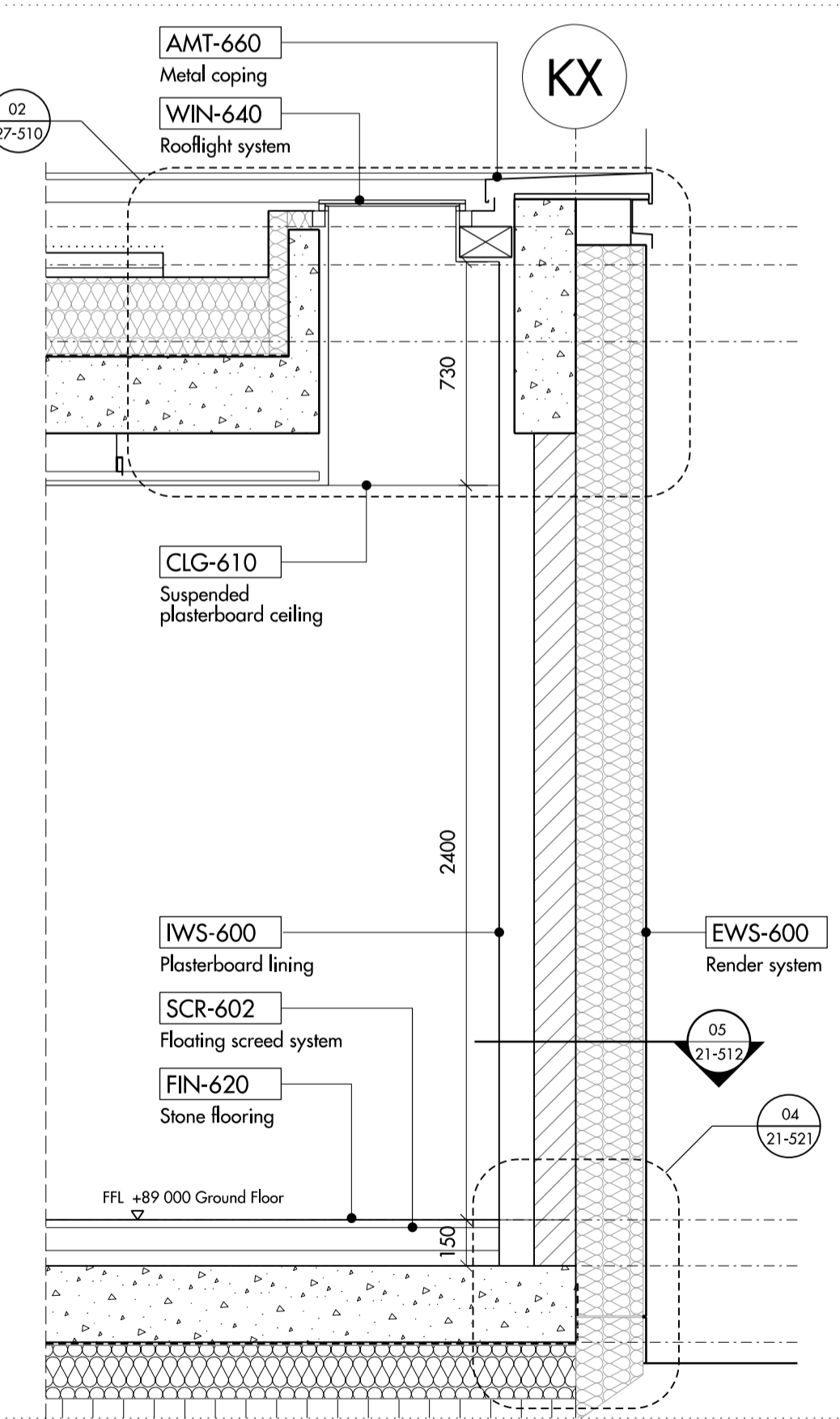
04 BLOCK K2/ SECTION 4



05 BLOCK K2/ SECTION 5



06 BLOCK K2/ SECTION 5



07 BLOCK K2/ SECTION 5

Do not scale from this drawing. Use figured dimensions only. Figured dimensions are in millimetres. All levels are in metres. All dimensions and levels shall be verified on site before proceeding with works. Detailed site survey to be carried out to verify positions and level relationships with site features and ordnance survey. Boundaries are indicative only and are to be verified by others. The architect must be notified of any discrepancy. Where building components are described in the specification as contractor designed, "construction" information relating to those components on this drawing represents design intent only.

REV	DATE	DESCRIPTION	CKD	REV	DATE	DESCRIPTION	CKD
T1	24.07.2015	ISSUED FOR TENDER	NR				

Allies and Morrison
 85 Southwark Street
 London SE1 0HX
 020 7921 0100
 020 7921 0101
 info@alliesandmorrisson.co.uk
 telephone
 facsimile
 email

KIDDERPORE AVENUE
 BLOCK K2: TYPICAL DETAIL SECTIONS
 EXTERNAL WALLS
 809_06_21_500
 SCALE: 1:50 @A1 1:25 @A3