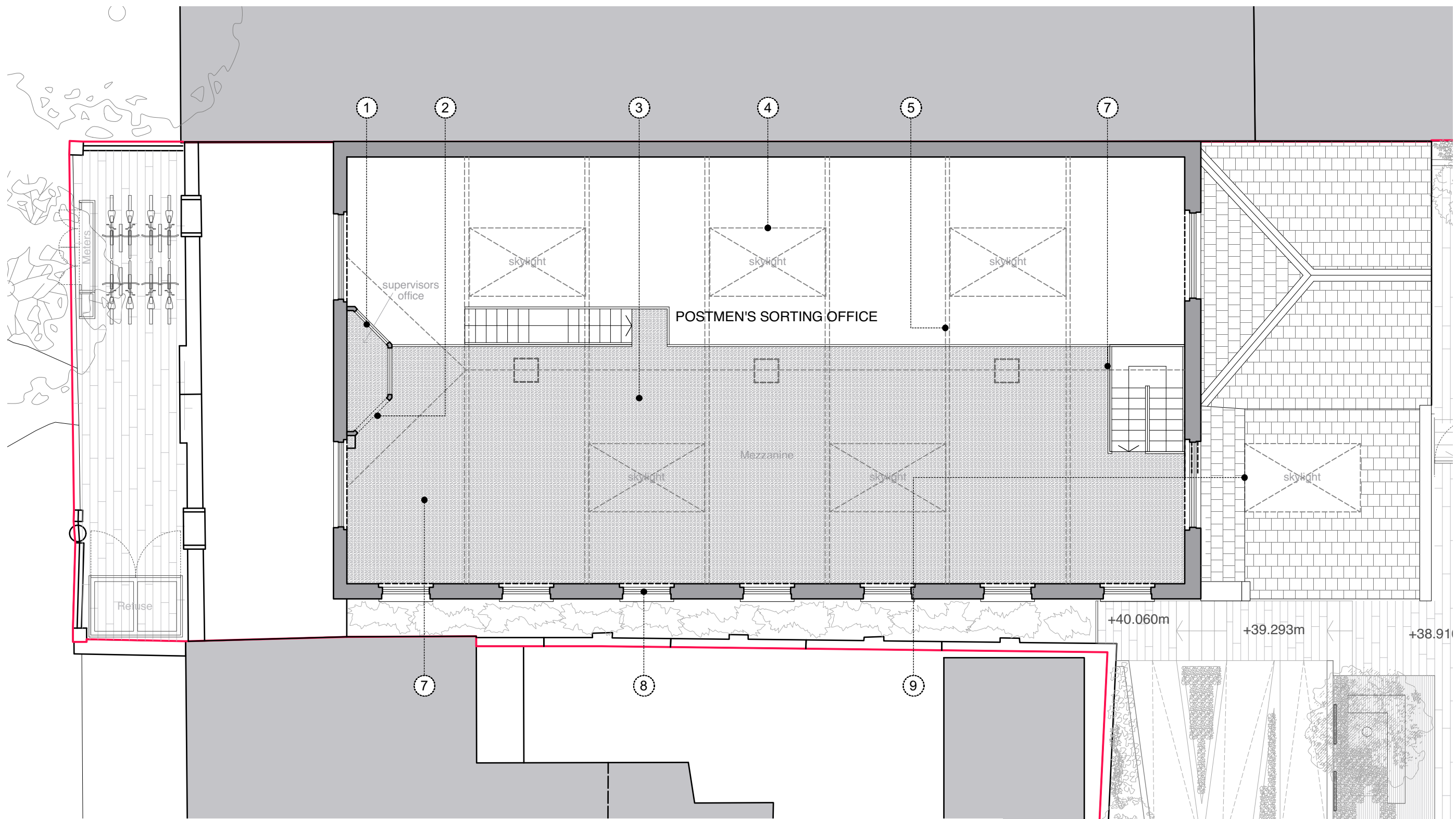


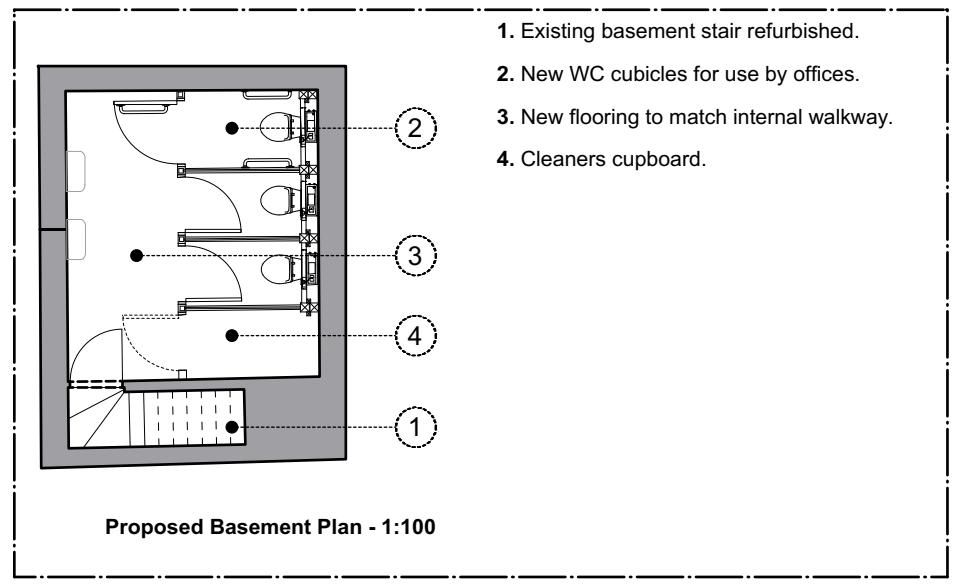
DO NOT SCALE OFF THIS DRAWING  
 ALL AMBIGUITIES OR DISCREPANCIES  
 TO BE REPORTED TO ARCHITECT  
 BEFORE COMMENCING

Notes

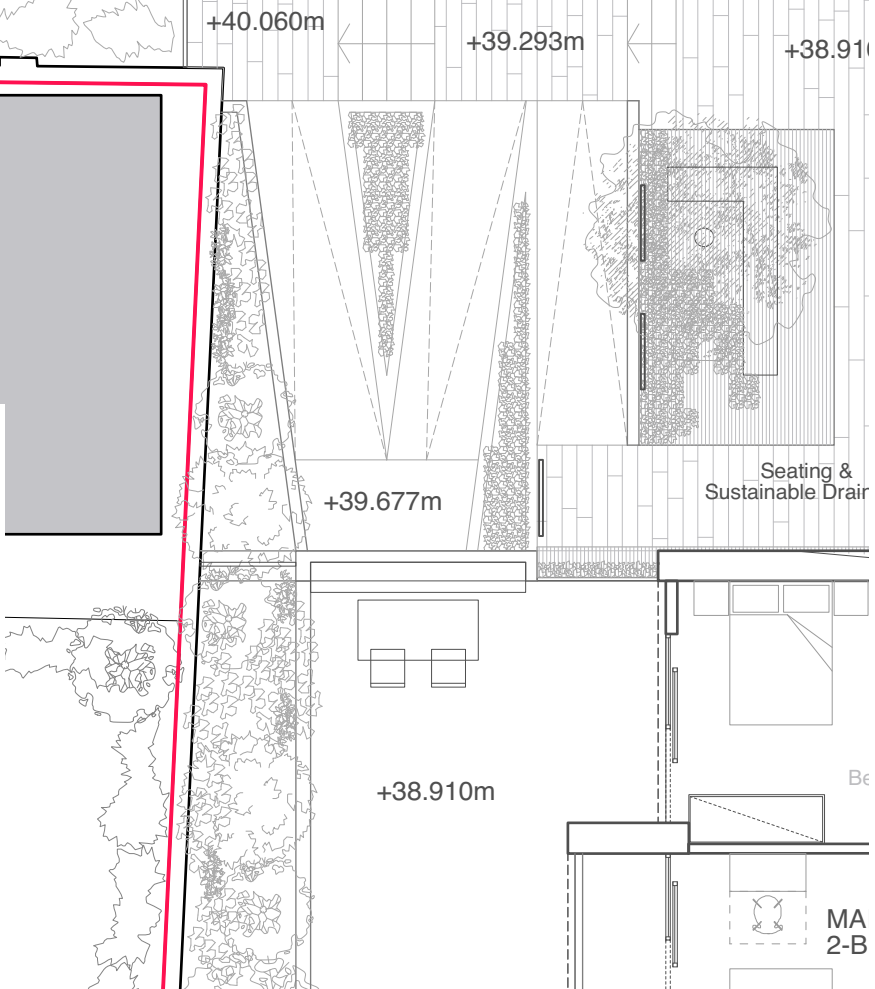


- 1. Existing supervisors office.
- 2. Access to supervisors office from mezzanine, which lines through with corner of office and sits off the face of the supervisors office, without touching the fabric.
- 3. Newly installed mezzanine to same level as existing mezzanine.
- 4. Existing skylights retained, refurbished and redecorated.
- 5. Existing roof trusses retained and repainted where necessary.

- 6. New, straight, stair to mezzanine.
- 7. New dog-legged stair to mezzanine.
- 8. Existing windows retained and cills cleaned.
- 9. Proposed new skylight on low pitched roof section, to match appearance of skylights on main hall space.



- 1. Existing basement stair refurbished.
- 2. New WC cubicles for use by offices.
- 3. New flooring to match internal walkway.
- 4. Cleaners cupboard.



Revisions

Date:	Rev:	Details:

**STUDIO MACKERETH**  
 ARCHITECTS  
 7B ST PANCRAS WAY  
 LONDON  
 NW1 0PB  
 TELEPHONE + 4 4 (0)20 7042 8335  
 EMAIL: INFO@STUDIOMACKERETH.COM

Project  
 30 Leighton Road

Drawing Title  
 Proposed Post Office Plans - FF

Scale	Creation Date	Status
1:100 @ A3	April 2015	Plan

Project No.	Drawing No.	Revision
MA 2-B 015	132	-