

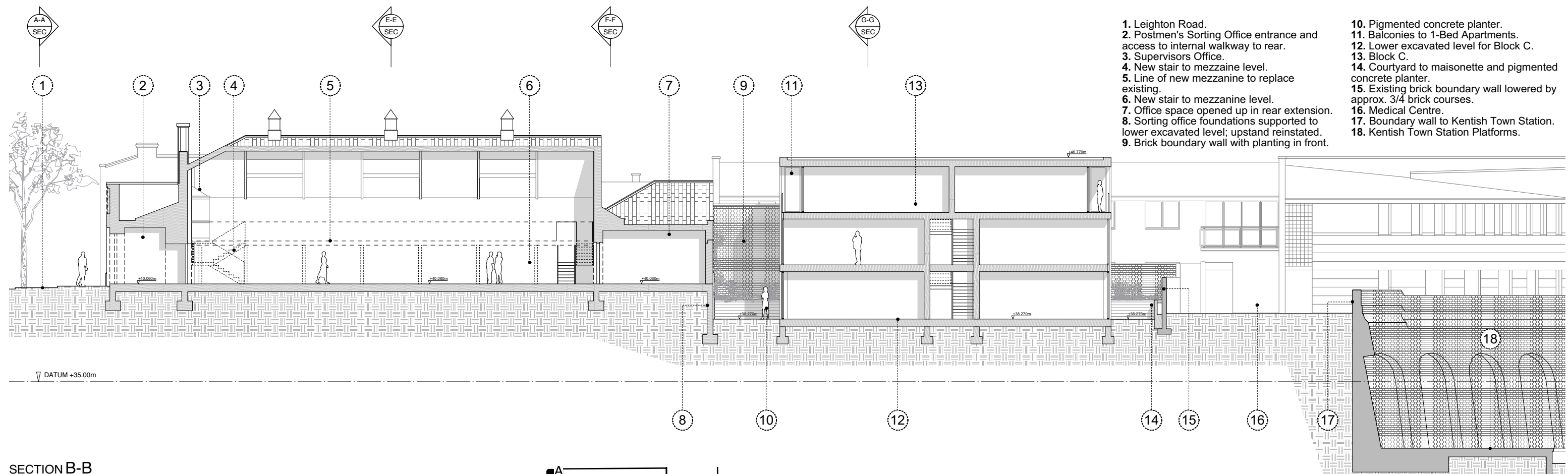


1. Medical Centre.
2. Leighton Road.
3. Existing mature tree in neighboring planting.
4. Existing mature tree in pavement.
5. Postmen's Sorting Office.
6. Existing red postbox to be retained in current position and protected and made accessible during any works pending approval.
7. Brick base courses to railings badly repaired in concrete poured over. Concrete to be removed and brick courses to be repaired.
8. Existing railings (bent) to be repaired, repainted and reinstated.
9. Neighboring house, No. 00 Leighton Road.

FOR POSTMEN'S SORTING OFFICE
 DETAILED ELEVATION SEE: [015_131
Proposed Elevations 1]

DATUM +35.00m

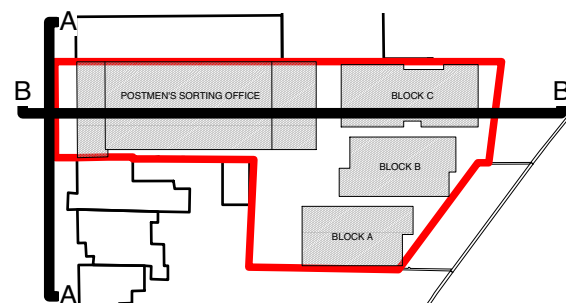
SECTION A-A: THROUGH LEIGHTON ROAD (POSTMEN'S SORTING OFFICE FRONT ELEVATION)



1. Leighton Road.
2. Postmen's Sorting Office entrance and access to internal walkway to rear.
3. Supervisors Office.
4. New stair to mezzanine level.
5. Line of new mezzanine to replace existing.
6. New stair to mezzanine level.
7. Office space opened up in rear extension.
8. Sorting office foundations supported to lower excavated level; upstand reinstated.
9. Brick boundary wall with planting in front.

10. Pigmented concrete planter.
11. Balconies to 1-Bed Apartments.
12. Lower excavated level for Block C.
13. Block C.
14. Courtyard to maisonette and pigmented concrete planter.
15. Existing brick boundary wall lowered by approx. 3/4 brick courses.
16. Medical Centre.
17. Boundary wall to Kentish Town Station.
18. Kentish Town Station Platforms.

SECTION B-B



DO NOT SCALE OFF THIS DRAWING ALL AMBIGUITIES OR DISCREPANCIES TO BE REPORTED TO ARCHITECT BEFORE COMMENCING		Revisions	Project	
Notes	Date:	Rev:	30 Leighton Road	
		Details:	Drawing Title	
			Proposed Site Sections A-A & B-B	
			Scale	Creation Date
			1:200 @ A3	April 2015
Status	Project No.	Drawing No.	Revision	
Plan	015	121	-	

STUDIO MACKERETH

ARCHITECTS
 78 ST PANCRAS WAY
 LONDON
 NW1 0PB

TELEPHONE +44 (0)20 7042 8335
 EMAIL: INFO@STUDIOMACKERETH.COM

