

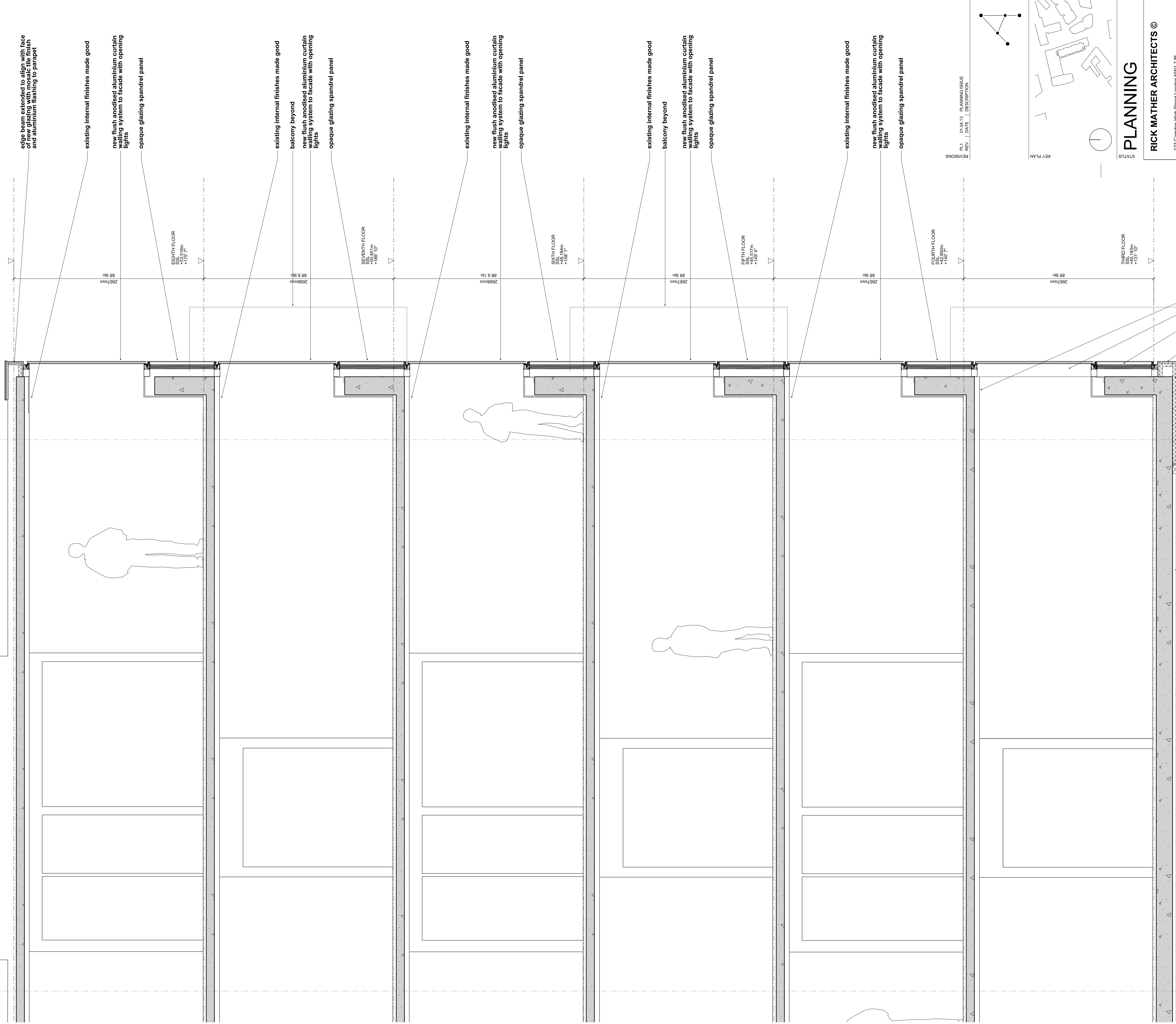
DO NOT SCALE FROM THIS DRAWING.
 CONTRACTOR TO CHECK ALL DIMENSIONS ON SITE.
 IMMEDIATELY REPORT ANY DISCREPANCIES TO THE ARCHITECT.
 THE SURVEY INFORMATION CONTAINED IN THIS DRAWING
 WAS PROVIDED BY PLOWMAN CRAVEN SURVEY DRAWINGS
 DEC 2011.
 COPYRIGHT RICK MATHER ARCHITECTS LLP ©

U

W

7735mm
256' 4.5in

EXISTING ROOF
SRL +26.185m
+164' 4"



edge beam extended to align with face of new glazing system and aluminium flashing to parapet

existing internal finishes made good

new flush anodised aluminium curtain walling system to facade with opening lights

opaque glazing spandrel panel

EIGHTH FLOOR
SRL +26.27m
+172' 2"

existing internal finishes made good

balcony beyond

new flush anodised aluminium curtain walling system to facade with opening lights

opaque glazing spandrel panel

SEVENTH FLOOR
SRL +25.851m
+168' 10"

existing internal finishes made good

new flush anodised aluminium curtain walling system to facade with opening lights

opaque glazing spandrel panel

SIXTH FLOOR
SRL +25.84m
+168' 4"

existing internal finishes made good

balcony beyond

new flush anodised aluminium curtain walling system to facade with opening lights

opaque glazing spandrel panel

FIFTH FLOOR
SRL +25.17m
+163' 4"

existing internal finishes made good

new flush anodised aluminium curtain walling system to facade with opening lights

opaque glazing spandrel panel

FOURTH FLOOR
SRL +22.85m
+149' 7"

THIRD FLOOR
SRL +13.10m
+131' 10"

existing internal finishes made good

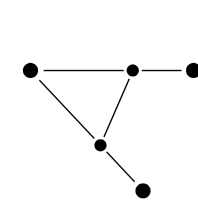
new flush anodised aluminium curtain walling system to facade with opening lights

opaque glazing spandrel panel

edge beam extended to align with face of new glazing with mosaic tile finish

soffit insulated and lined with sapelle hardwood lining boards

REV	DATE	DESCRIPTION
R1	01.04.13	PLANNING ISSUE



KEY PLAN

STATUS
PLANNING

RICK MATHER ARCHITECTS ©

123 Camden High Street London NW1 7JF
 T: 020 7284 1727 F: 020 7287 7828
 info@rickmather.com www.rickmather.com

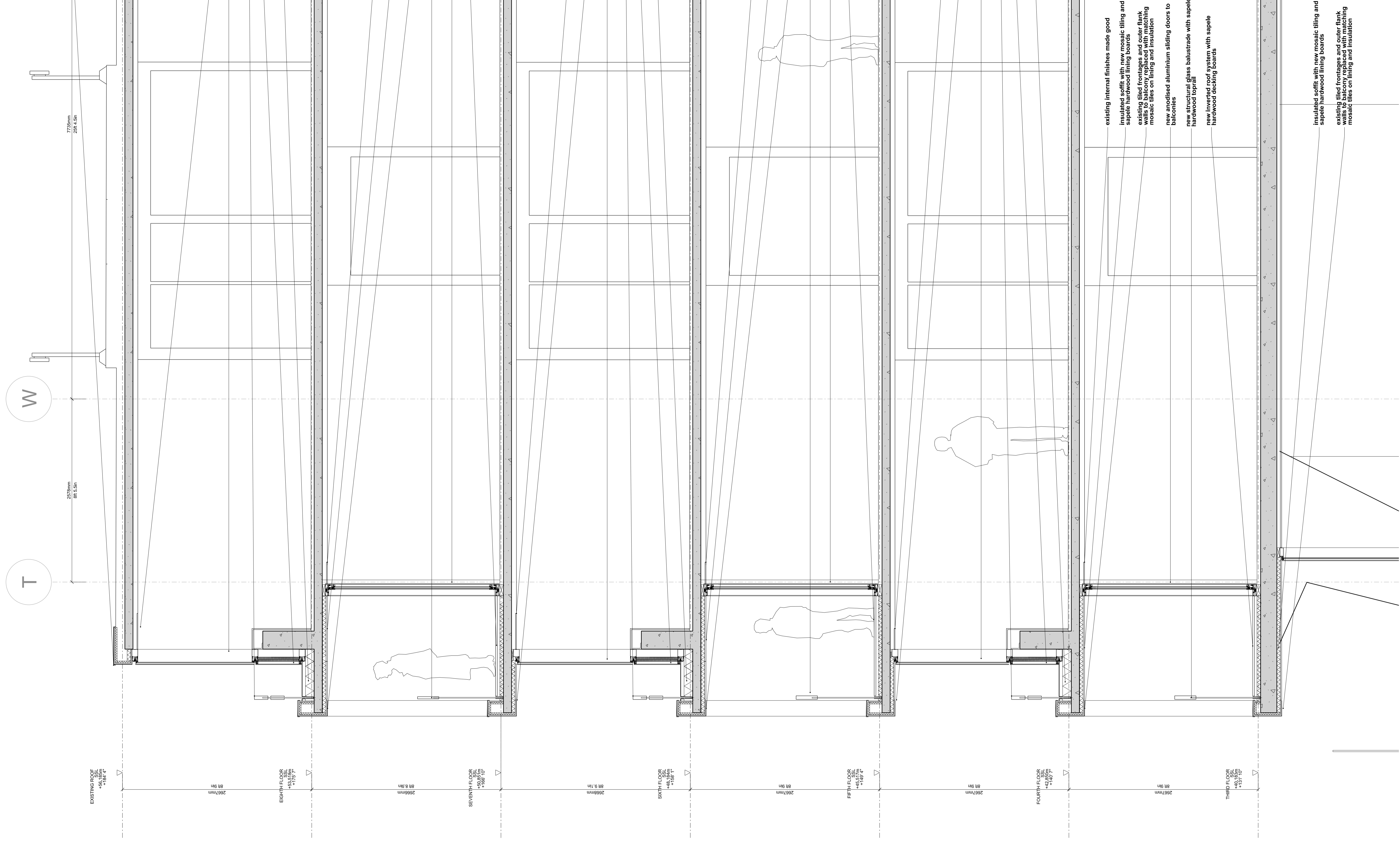
JOB
101-103 New Oxford Street
London, WC1A 1DD

TITLE
PROPOSED FACADE SECTION - EAST
CENTRE POINT HOUSE

DB	JOB #	PL1	REV	DATE	REV DATE
GM	552	19851-CPH	A1	APR 13	01.04.13

DO NOT SCALE FROM THIS DRAWING.
 CONTRACTOR TO CHECK ALL DIMENSIONS ON SITE.
 IMMEDIATELY REPORT ANY DISCREPANCIES TO THE ARCHITECT.
 THE SURVEY INFORMATION CONTAINED IN THIS DRAWING
 WAS PROVIDED BY PLOWMAN CRAVEN SURVEY DRAWINGS
 DEC 2011.
 COPYRIGHT RICK MATHER ARCHITECTS LLP ©

edges beam extended to align with face
 of new glazing with mosaic tile finish
 on lining and insulation with
 aluminium flashing to parapet



existing internal finishes made good
 new flush anodised aluminium curtain
 walling system to facade with opening
 lights / opaque spandrel panel to low level
 existing timber / metal balustrade retained
 opaque glazing spandrel panel
 new inverted roof system with gravel
 ballast

existing internal finishes made good
 insulated soffit with new mosaic tiling and
 sapele hardwood lining boards
 existing tiled frontages and outer flank
 walls to balcony replaced with matching
 mosaic tiles on lining and insulation
 new structural glass balustrade with sapele
 hardwood top rail
 new anodised aluminium sliding doors to
 balconies
 new inverted roof system with sapele
 hardwood decking boards

existing internal finishes made good
 insulated soffit with new mosaic tiling and
 sapele hardwood lining boards
 new flush anodised aluminium curtain
 walling system to facade with opening
 lights / opaque spandrel panel to low level
 existing timber / metal balustrade retained
 opaque glazing spandrel panel
 new inverted roof system with gravel
 ballast

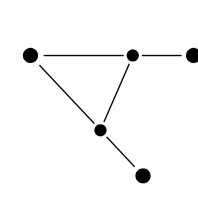
existing internal finishes made good
 insulated soffit with new tiling and lining
 boards to match existing
 existing tiled frontages and outer flank
 walls to balcony replaced with matching
 mosaic tiles on lining and insulation
 new structural glass balustrade with sapele
 hardwood top rail
 new anodised aluminium sliding doors to
 balconies
 new inverted roof system with sapele
 hardwood decking boards

existing internal finishes made good
 insulated soffit with new mosaic tiling and
 sapele hardwood lining boards
 new flush anodised aluminium curtain
 walling system to facade with opening
 lights / opaque spandrel panel to low level
 existing timber / metal balustrade retained
 opaque glazing spandrel panel
 new inverted roof system with gravel
 ballast

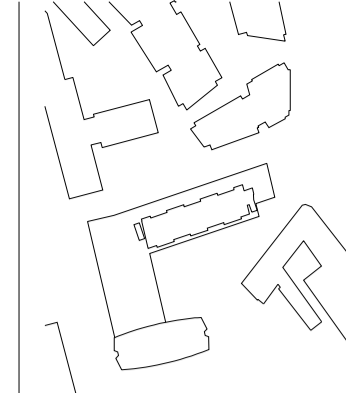
existing internal finishes made good
 insulated soffit with new mosaic tiling and
 sapele hardwood lining boards
 existing tiled frontages and outer flank
 walls to balcony replaced with matching
 mosaic tiles on lining and insulation
 new anodised aluminium sliding doors to
 balconies
 new structural glass balustrade with sapele
 hardwood top rail
 new inverted roof system with sapele
 hardwood decking boards

insulated soffit with new mosaic tiling and
 sapele hardwood lining boards
 existing tiled frontages and outer flank
 walls to balcony replaced with matching
 mosaic tiles on lining and insulation

PL1 28.05.12 PLANNING ISSUE
 9 18.05.12 REVISION FOLLOWING STAGE C ISSUE
 REV | DATE | DESCRIPTION



KEY PLAN



STATUS

PLANNING

RICK MATHER ARCHITECTS ©

123 Camden High Street London NW1 7JH
 T: 020 7284 1727 F: 020 7287 7838
 info@rickmather.com www.rickmather.com

101-103 New Oxford Street
 London, WC1A 1DD

PROPOSED FACADE SECTION - WEST
 CENTRE POINT HOUSE

JOB #	DB	19852-CPH	PL1	REV	REV DATE
	GM	552	19852-CPH	PL1	01.04.13
CHECKED	GM	SCALE	A1	DATE	APR 13
DRAWN	GM	SIZE	A1	DATE	APR 13

