



NOTES  
 DO NOT SCALE FROM THIS DRAWING.  
 CONTRACTOR TO CHECK ALL DIMENSIONS ON SITE.  
 ANY DISCREPANCIES TO BE REPORTED TO THE ARCHITECT IMMEDIATELY.  
 THE SURVEY INFORMATION CONTAINED IN THIS DRAWING WAS PROVIDED BY PLOWMAN CRAVEN SURVEY DRAWINGS DEC 2011 - OCT 2012.  
 COPYRIGHT RICK MATHER ARCHITECTS LLP ©

AREA KEY

RESIDENTIAL	[Light Blue]
RETAIL	[Yellow]
PLANT	[Light Green]
CIRCULATION	[Light Grey]
CAR PARK	[Light Blue]
BACK OF HOUSE	[Light Grey]
OFFICE	[Light Brown]
RESIDENTIAL AMENITY	[Light Purple]

KEY

DEMOLITION	[Diagonal Hatching]
EXISTING STRUCTURE	[Solid Black]
PARTITION	[Solid Grey]
PROPOSED STRUCTURE	[Diagonal Hatching]

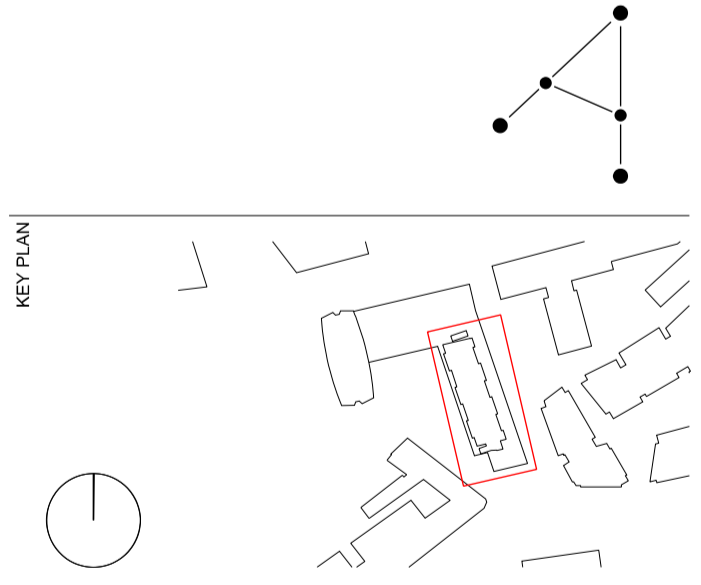
KEY

AFFORDABLE HOUSING USE

AFFORDABLE HOUSING CIRCULATION	[Light Blue]
AFFORDABLE 1 BED	[Light Blue]
AFFORDABLE 2 BED	[Medium Blue]
AFFORDABLE 3 BED	[Dark Blue]
AFFORDABLE 4 BED	[Very Dark Blue]

REVISIONS

REV	DATE	DESCRIPTION
PL1	01.04.13	PLANNING ISSUE



STATUS  
**PLANNING**

**RICK MATHER ARCHITECTS ©**  
 123 Camden High Street London NW1 7JR  
 T: 020 7284 1727 F: 020 7287 7626  
 info@rickmather.com www.rickmather.com

JOB  
**Centre Point**  
 101-103 New Oxford Street  
 London, WC1A 1DD **APP 1A**

TITLE  
**PROPOSED FLOOR PLAN**  
 GROUND FLOOR MEZZANINE  
 AFFORDABLE HOUSING BLOCK

DRAWN	DMcC	JOB #	552	DRG #	19662-CPW	REV	PL1
CHECKED	GM	SCALE@A1	1:100	SIZE	A1	DATE	APR 13
						REV/DATE	01.04.13



NOTES  
 DO NOT SCALE FROM THIS DRAWING.  
 CONTRACTOR TO CHECK ALL DIMENSIONS ON SITE.  
 ANY DISCREPANCIES TO BE REPORTED TO THE ARCHITECT IMMEDIATELY.  
 THE SURVEY INFORMATION CONTAINED IN THIS DRAWING WAS PROVIDED BY PLOWMAN CRAVEN SURVEY DRAWINGS DEC 2011 - OCT 2012.  
 COPYRIGHT RICK MATHER ARCHITECTS LLP ©

AREA KEY

RESIDENTIAL	[Light Blue]
RETAIL	[Yellow]
PLANT	[Light Green]
CIRCULATION	[Light Grey]
CAR PARK	[Light Blue]
BACK OF HOUSE	[Dark Grey]
OFFICE	[Brown]
RESIDENTIAL AMENITY	[Purple]

KEY

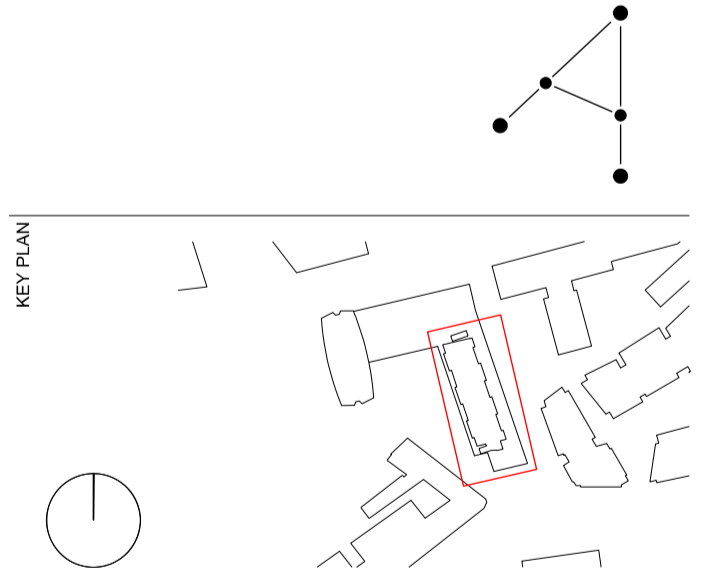
DEMOLITION	[Hatched]
EXISTING STRUCTURE	[Black]
PARTITION	[Dark Grey]
PROPOSED STRUCTURE	[Hatched]
INDICATIVE RESTAURANT ARRANGEMENT	[Dotted]

KEY

AFFORDABLE HOUSING USE	[Light Blue]
AFFORDABLE HOUSING CIRCULATION	[Light Blue]
AFFORDABLE 1 BED	[Light Blue]
AFFORDABLE 2 BED	[Medium Blue]
AFFORDABLE 3 BED	[Dark Blue]
AFFORDABLE 4 BED	[Darkest Blue]

REVISIONS

PL1	01.04.13	PLANNING ISSUE
REV	DATE	DESCRIPTION



STATUS  
**PLANNING**

**RICK MATHER ARCHITECTS ©**

123 Camden High Street London NW1 7JR  
 T: 020 7284 1727 F: 020 7287 7626  
 info@rickmather.com www.rickmather.com

JOB  
**Centre Point**  
 101-103 New Oxford Street  
 London, WC1A 1DD **APP 1A**

TITLE  
**PROPOSED FLOOR PLAN**  
 FIRST FLOOR  
 AFFORDABLE HOUSING BLOCK

DRAWN	DMcC	JOB #	552	DRG #	19663-CPW	REV	PL1		
CHECKED	GM	SCALE@A1	1:100	SIZE	A1	DATE	APR 13	REV/DATE	01.04.13



NOTES  
 DO NOT SCALE FROM THIS DRAWING.  
 CONTRACTOR TO CHECK ALL DIMENSIONS ON SITE.  
 ANY DISCREPANCIES TO BE REPORTED TO THE ARCHITECT IMMEDIATELY.  
 THE SURVEY INFORMATION CONTAINED IN THIS DRAWING WAS PROVIDED BY PLOWMAN CRAVEN SURVEY DRAWINGS DEC 2011 - OCT 2012.  
 COPYRIGHT RICK MATHER ARCHITECTS LLP ©

AREA KEY

RESIDENTIAL	[Light Blue]
RETAIL	[Yellow]
PLANT	[Light Green]
CIRCULATION	[Light Grey]
CAR PARK	[Light Blue]
BACK OF HOUSE	[Dark Grey]
OFFICE	[Brown]
RESIDENTIAL AMENITY	[Purple]

KEY

DEMOLITION	[Hatched]
EXISTING STRUCTURE	[Black]
PARTITION	[Dark Grey]
PROPOSED STRUCTURE	[Hatched]
INDICATIVE RESTAURANT ARRANGEMENT	[Dotted]

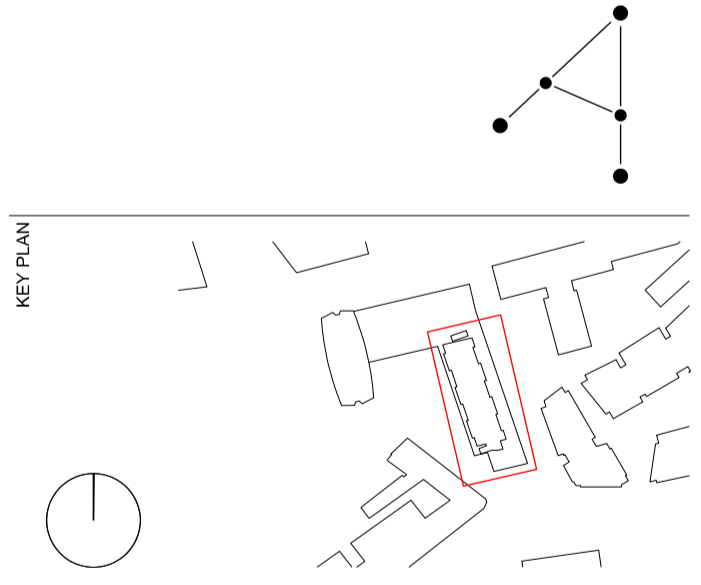
KEY

AFFORDABLE HOUSING USE

AFFORDABLE HOUSING CIRCULATION	[Light Blue]
AFFORDABLE 1 BED	[Light Blue]
AFFORDABLE 2 BED	[Medium Blue]
AFFORDABLE 3 BED	[Dark Blue]
AFFORDABLE 4 BED	[Darkest Blue]

REVISIONS

REV	DATE	DESCRIPTION
PL1	01.04.13	PLANNING ISSUE



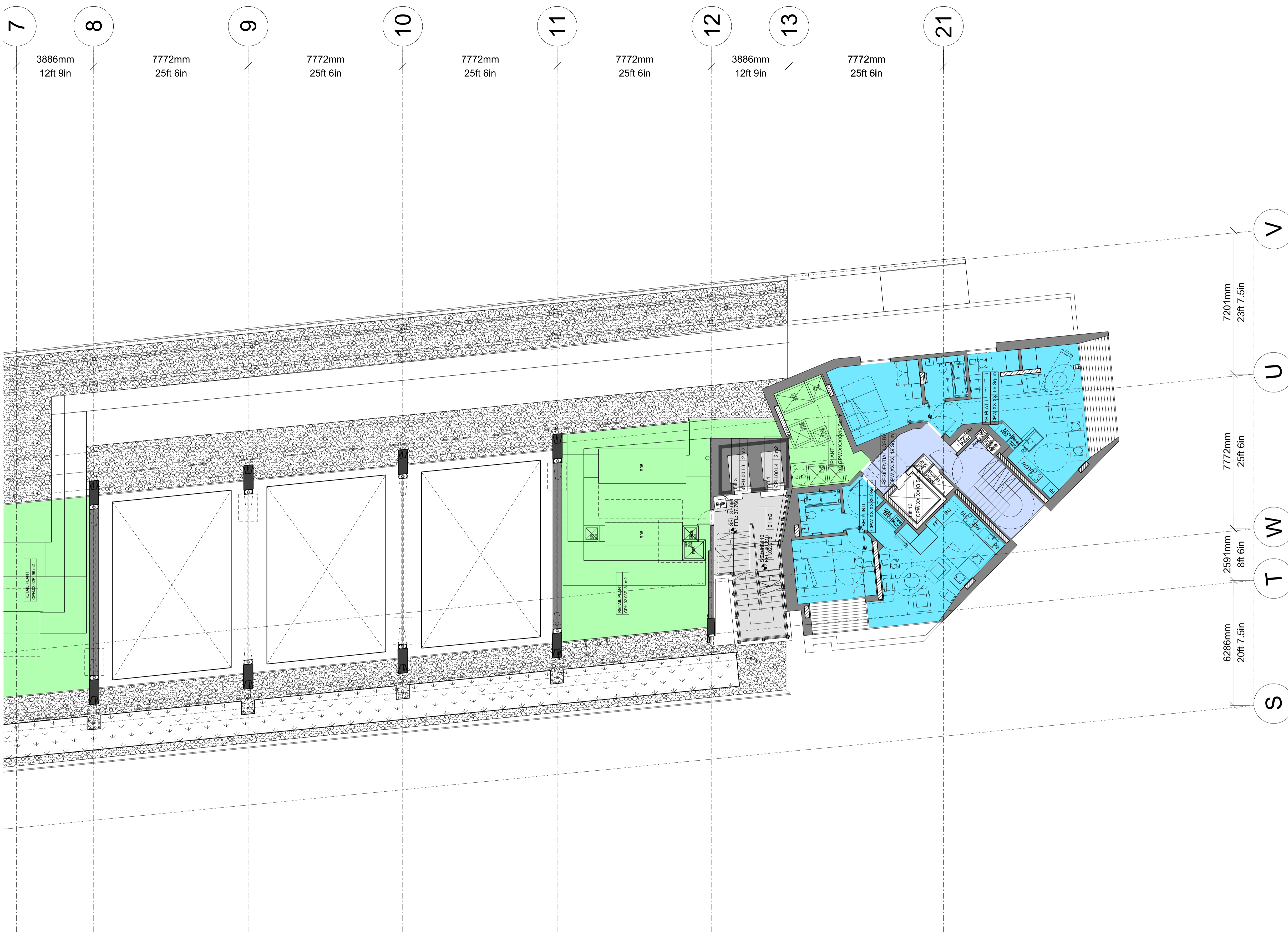
STATUS  
**PLANNING**

**RICK MATHER ARCHITECTS ©**  
 123 Camden High Street London NW1 7JR  
 T: 020 7284 1727 F: 020 7287 7626  
 info@rickmather.com www.rickmather.com

JOB  
**Centre Point**  
 101-103 New Oxford Street  
 London, WC1A 1DD **APP 1A**

TITLE  
**PROPOSED FLOOR PLAN**  
 FIRST MEZZANINE  
 AFFORDABLE HOUSING BLOCK

DRAWN	DMcC	JOB #	552	DRG #	19664-CPW	REV	PL1
CHECKED	GM	SCALE@A1	1:100	SIZE	A1	DATE	APR 13
						REV/DATE	01.04.13



NOTES  
 DO NOT SCALE FROM THIS DRAWING.  
 CONTRACTOR TO CHECK ALL DIMENSIONS ON SITE.  
 ANY DISCREPANCIES TO BE REPORTED TO THE ARCHITECT IMMEDIATELY.  
 THE SURVEY INFORMATION CONTAINED IN THIS DRAWING WAS PROVIDED BY PLOWMAN CRAVEN SURVEY DRAWINGS DEC 2011 - OCT 2012.  
 COPYRIGHT RICK MATHER ARCHITECTS LLP ©

AREA KEY

RESIDENTIAL	Light Blue
RETAIL	Yellow
PLANT	Green
CIRCULATION	Grey
CAR PARK	Light Blue
BACK OF HOUSE	Grey
OFFICE	Brown
RESIDENTIAL AMENITY	Purple

KEY

DEMOLITION	Diagonal Hatching
EXISTING STRUCTURE	Black
PARTITION	Dark Grey
PROPOSED STRUCTURE	Diagonal Hatching

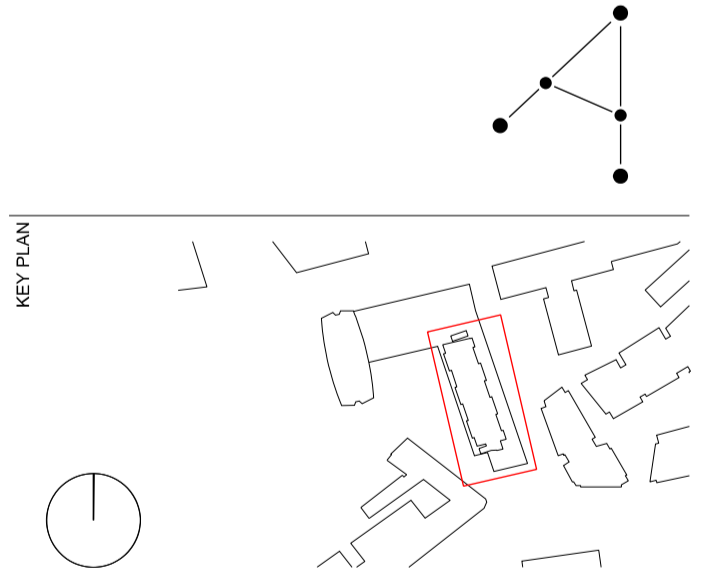
KEY

AFFORDABLE HOUSING USE

AFFORDABLE HOUSING CIRCULATION	Light Blue
AFFORDABLE 1 BED	Light Blue
AFFORDABLE 2 BED	Medium Blue
AFFORDABLE 3 BED	Dark Blue
AFFORDABLE 4 BED	Very Dark Blue

REVISIONS

REV	DATE	DESCRIPTION
PL1	01.04.13	PLANNING ISSUE



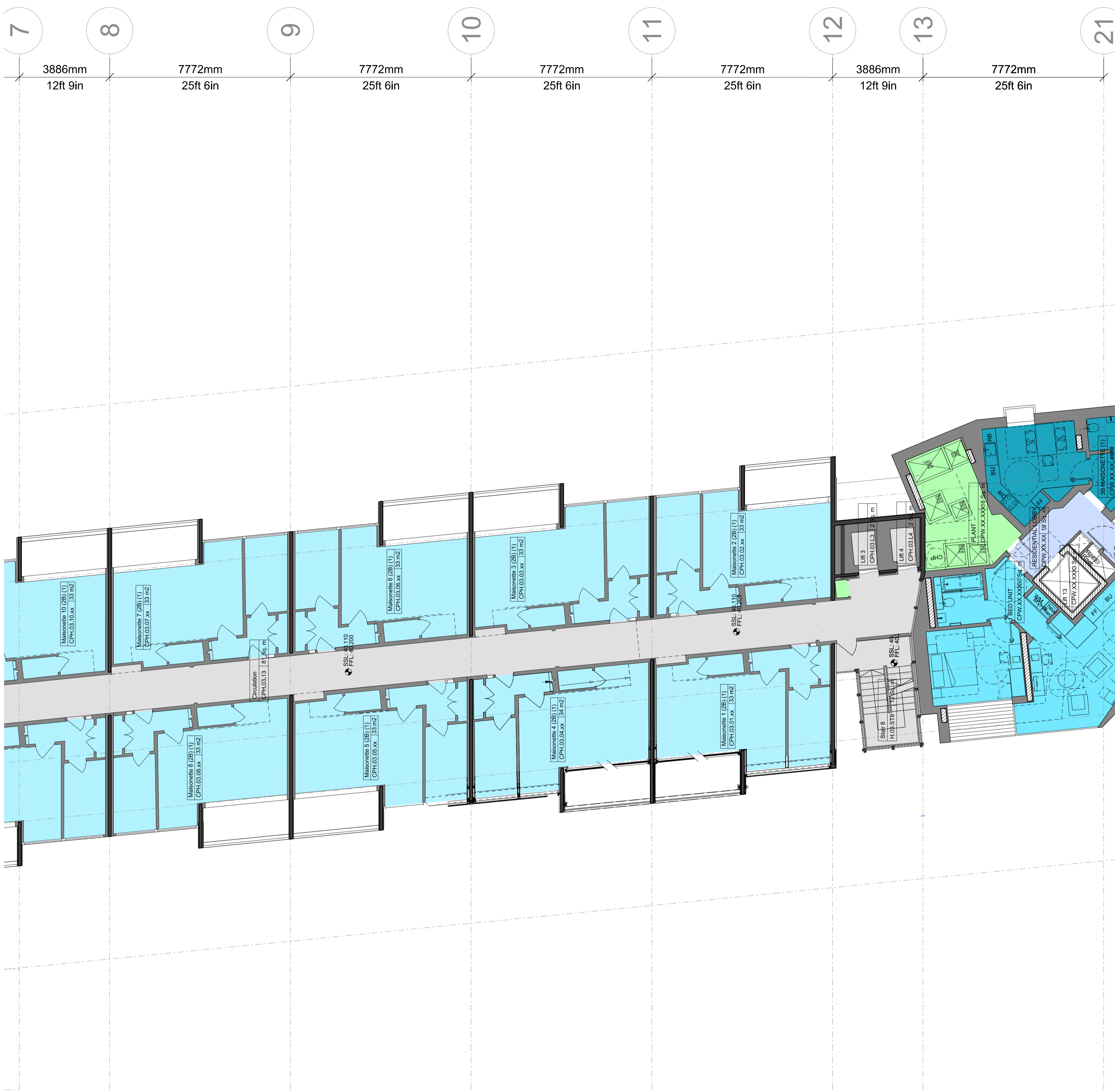
STATUS  
**PLANNING**

**RICK MATHER ARCHITECTS ©**  
 123 Camden High Street London NW1 7JR  
 T: 020 7284 1727 F: 020 7287 7626  
 info@rickmather.com www.rickmather.com

JOB  
**Centre Point**  
 101-103 New Oxford Street  
 London, WC1A 1DD **APP 1A**

TITLE  
**PROPOSED FLOOR PLAN**  
 SECOND FLOOR  
 AFFORDABLE HOUSING BLOCK

DRAWN	DMcC	JOB #	552	DRG #	19665-CPW	REV	PL1
CHECKED	GM	SCALE@A1	1:100	SIZE	A1	DATE	APR 13
						REV DATE	01.04.13



NOTES  
 DO NOT SCALE FROM THIS DRAWING.  
 CONTRACTOR TO CHECK ALL DIMENSIONS ON SITE.  
 ANY DISCREPANCIES TO BE REPORTED TO THE ARCHITECT IMMEDIATELY.  
 THE SURVEY INFORMATION CONTAINED IN THIS DRAWING WAS PROVIDED BY PLOWMAN CRAVEN SURVEY DRAWINGS DEC 2011 - OCT 2012.  
 COPYRIGHT RICK MATHER ARCHITECTS LLP ©

AREA KEY

RESIDENTIAL	[Light Blue]
RETAIL	[Yellow]
PLANT	[Green]
CIRCULATION	[Grey]
CAR PARK	[Light Blue]
BACK OF HOUSE	[Dark Grey]
OFFICE	[Brown]
RESIDENTIAL AMENITY	[Purple]

KEY

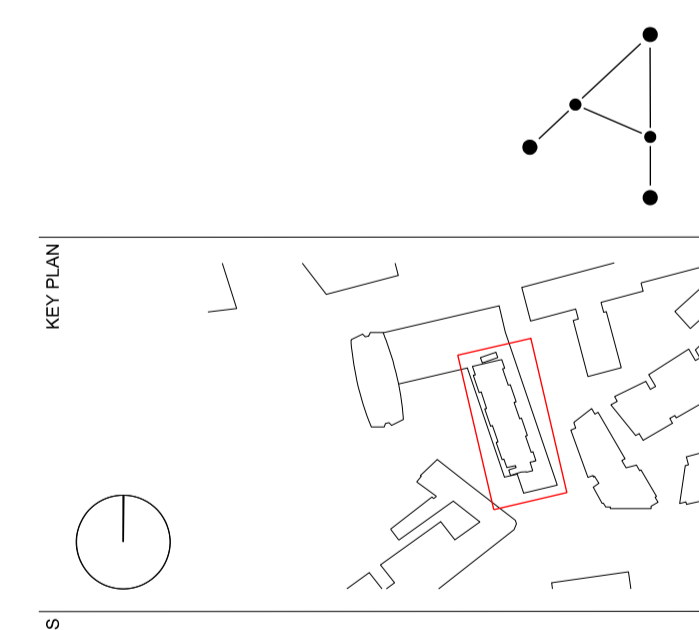
DEMOLITION	[Hatched]
EXISTING STRUCTURE	[Black]
PARTITION	[Dark Grey]
PROPOSED STRUCTURE	[Hatched]

KEY

AFFORDABLE HOUSING USE	[Light Blue]
AFFORDABLE HOUSING CIRCULATION	[Light Blue]
AFFORDABLE 1 BED	[Light Blue]
AFFORDABLE 2 BED	[Medium Blue]
AFFORDABLE 3 BED	[Dark Blue]
AFFORDABLE 4 BED	[Very Dark Blue]

REVISIONS

REV	DATE	DESCRIPTION
PL1	01.04.13	PLANNING ISSUE



STATUS **PLANNING**

**RICK MATHER ARCHITECTS ©**

123 Camden High Street London NW1 7JR  
 T: 020 7284 1727 F: 020 7287 7626  
 info@rickmather.com www.rickmather.com

**JOB**  
 Centre Point  
 101-103 New Oxford Street  
 London, WC1A 1DD **APP 1A**

**TITLE**  
 PROPOSED FLOOR PLAN  
 THIRD FLOOR  
 AFFORDABLE HOUSING BLOCK

DRAWN	DMcC	JOB #	552	DRG #	19666-CPW	REV	PL1		
CHECKED	GM	SCALE@A1	1:100	SIZE	A1	DATE	APR 13	REV DATE	01.04.13



NOTES  
 DO NOT SCALE FROM THIS DRAWING.  
 CONTRACTOR TO CHECK ALL DIMENSIONS ON SITE.  
 ANY DISCREPANCIES TO BE REPORTED TO THE ARCHITECT IMMEDIATELY.  
 THE SURVEY INFORMATION CONTAINED IN THIS DRAWING WAS PROVIDED BY PLOWMAN CRAVEN SURVEY DRAWINGS DEC 2011 - OCT 2012.  
 COPYRIGHT RICK MATHER ARCHITECTS LLP ©

AREA KEY

RESIDENTIAL	[Light Blue]
RETAIL	[Yellow]
PLANT	[Green]
CIRCULATION	[Grey]
CAR PARK	[Light Blue]
BACK OF HOUSE	[Dark Grey]
OFFICE	[Brown]
RESIDENTIAL AMENITY	[Purple]

KEY

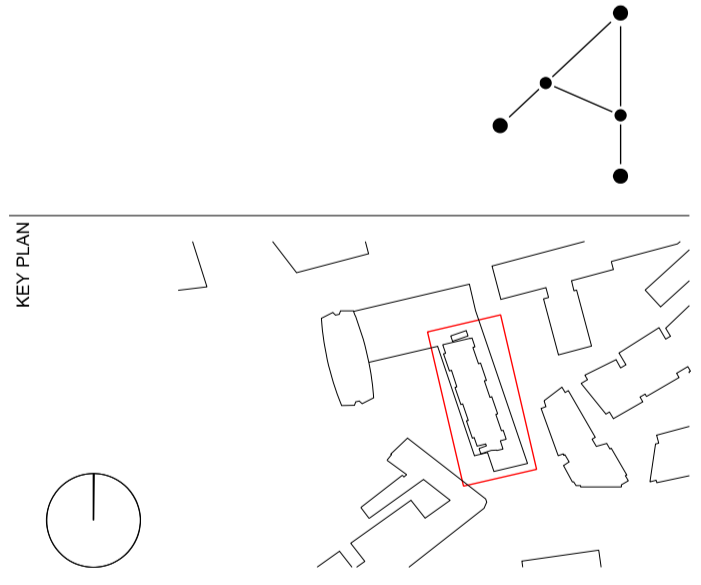
DEMOLITION	[Hatched]
EXISTING STRUCTURE	[Black]
PARTITION	[Dark Grey]
PROPOSED STRUCTURE	[Hatched]

KEY

AFFORDABLE HOUSING USE	[Light Blue]
AFFORDABLE HOUSING CIRCULATION	[Light Blue]
AFFORDABLE 1 BED	[Light Blue]
AFFORDABLE 2 BED	[Medium Blue]
AFFORDABLE 3 BED	[Dark Blue]
AFFORDABLE 4 BED	[Dark Blue]

REVISIONS

REV	DATE	DESCRIPTION
PL1	01.04.13	PLANNING ISSUE



STATUS  
**PLANNING**

**RICK MATHER ARCHITECTS ©**  
 123 Camden High Street London NW1 7JR  
 T: 020 7284 1727 F: 020 7281 7626  
 info@rickmather.com www.rickmather.com

JOB  
**Centre Point**  
 101-103 New Oxford Street  
 London, WC1A 1DD **APP 1A**

TITLE  
**PROPOSED FLOOR PLAN**  
 FOURTH FLOOR  
 AFFORDABLE HOUSING BLOCK

DRAWN	DMcC	JOB #	552	DRG #	19667-CPW	REV	PL1
CHECKED	GM	SCALE@A1	1:100	SIZE	A1	DATE	APR 13
						REV/DATE	01.04.13