

4 4A 5 6 7 8 9 10 11 12 13 21

7772mm 25ft 6in 7772mm 25ft 6in 3886mm 12ft 9in 3886mm 12ft 9in 7772mm 25ft 6in 7772mm 25ft 6in 7772mm 25ft 6in 7772mm 25ft 6in 3886mm 12ft 9in 7772mm 25ft 6in

NOTES
DO NOT SCALE FROM THIS DRAWING.
CONTRACTOR TO CHECK ALL DIMENSIONS ON SITE.
ANY DISCREPANCIES TO BE REPORTED TO THE ARCHITECT IMMEDIATELY.

THE SURVEY INFORMATION CONTAINED IN THIS DRAWING WAS PROVIDED BY PLOWMAN CRAVEN SURVEY DRAWINGS DEC 2011 - OCT 2012.

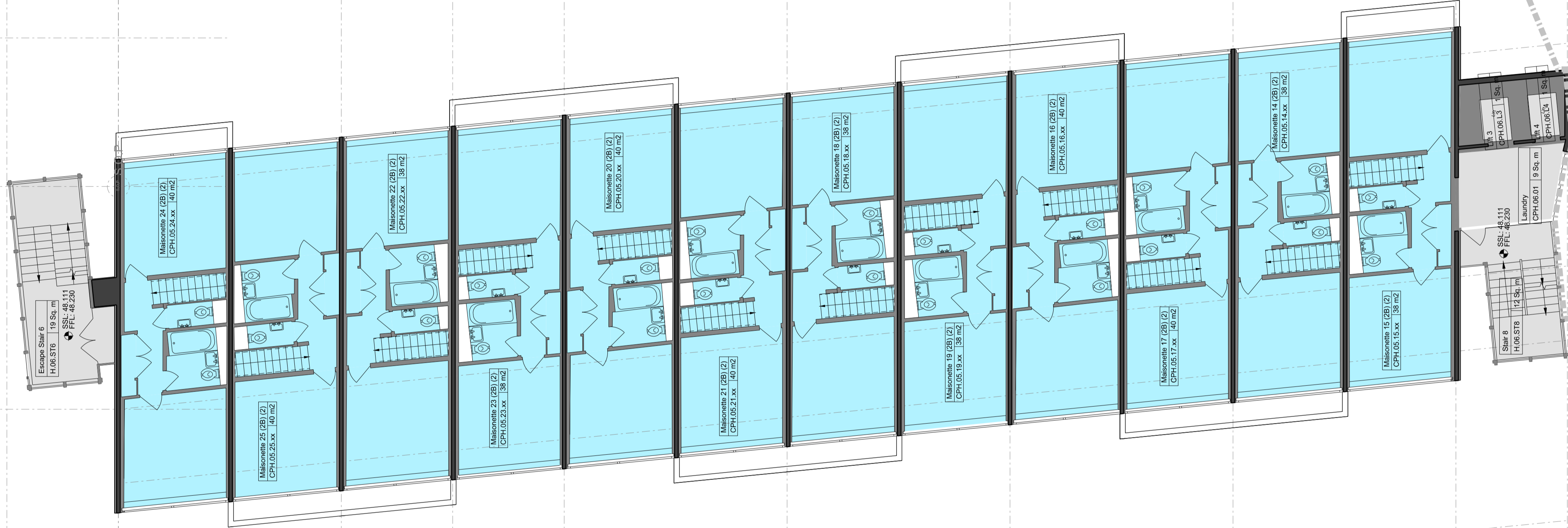
COPYRIGHT RICK MATHER ARCHITECTS LLP ©

AREA KEY

RESIDENTIAL	[Light Blue]
RETAIL	[Yellow]
PLANT	[Light Green]
CIRCULATION	[Light Grey]
CAR PARK	[Light Blue]
BACK OF HOUSE	[Dark Grey]
OFFICE	[Brown]
RESIDENTIAL AMENITY	[Purple]

KEY

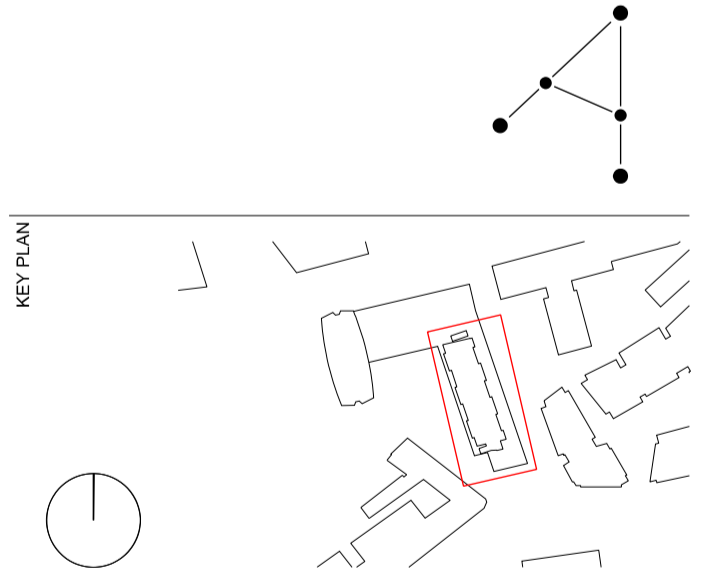
DEMOLITION	[Diagonal Lines]
EXISTING STRUCTURE	[Black]
PARTITION	[Dark Grey]
PROPOSED STRUCTURE	[Hatched]



NOTE: LOCATION OF AFFORDABLE HOUSING PROPOSAL.
SEE DRAWING SERIES 19660 (APP 1A)
AND DRAWING SERIES 19680 (APP 1B)

REVISIONS

REV	DATE	DESCRIPTION
PL1	01.04.13	PLANNING ISSUE



STATUS

RICK MATHER ARCHITECTS ©

123 Camden High Street London NW1 7JR
T: 020 7284 1721 F: 020 7287 7626
info@rickmather.com www.rickmather.com

JOB
Centre Point
101-103 New Oxford Street
London, WC1A 1DD

TITLE
PROPOSED FLOOR PLAN
SIXTH FLOOR
CENTRE POINT HOUSE

DRAWN	DMcC	JOB #	552	DRG #	19650-CPH	REV	PL1
CHECKED	GM	SCALE@A1	1:100	SIZE	A1	DATE	APR 13
						REV/DATE	01.04.13

4 4A 5 6 7 8 9 10 11 12 13 21

7772mm 25ft 6in 7772mm 25ft 6in 3886mm 12ft 9in 3886mm 12ft 9in 7772mm 25ft 6in 7772mm 25ft 6in 7772mm 25ft 6in 7772mm 25ft 6in 3886mm 12ft 9in 7772mm 25ft 6in

NOTES
DO NOT SCALE FROM THIS DRAWING.
CONTRACTOR TO CHECK ALL DIMENSIONS ON SITE.
ANY DISCREPANCIES TO BE REPORTED TO THE ARCHITECT IMMEDIATELY.

THE SURVEY INFORMATION CONTAINED IN THIS DRAWING WAS PROVIDED BY PLOWMAN CRAVEN SURVEY DRAWINGS DEC 2011 - OCT 2012.

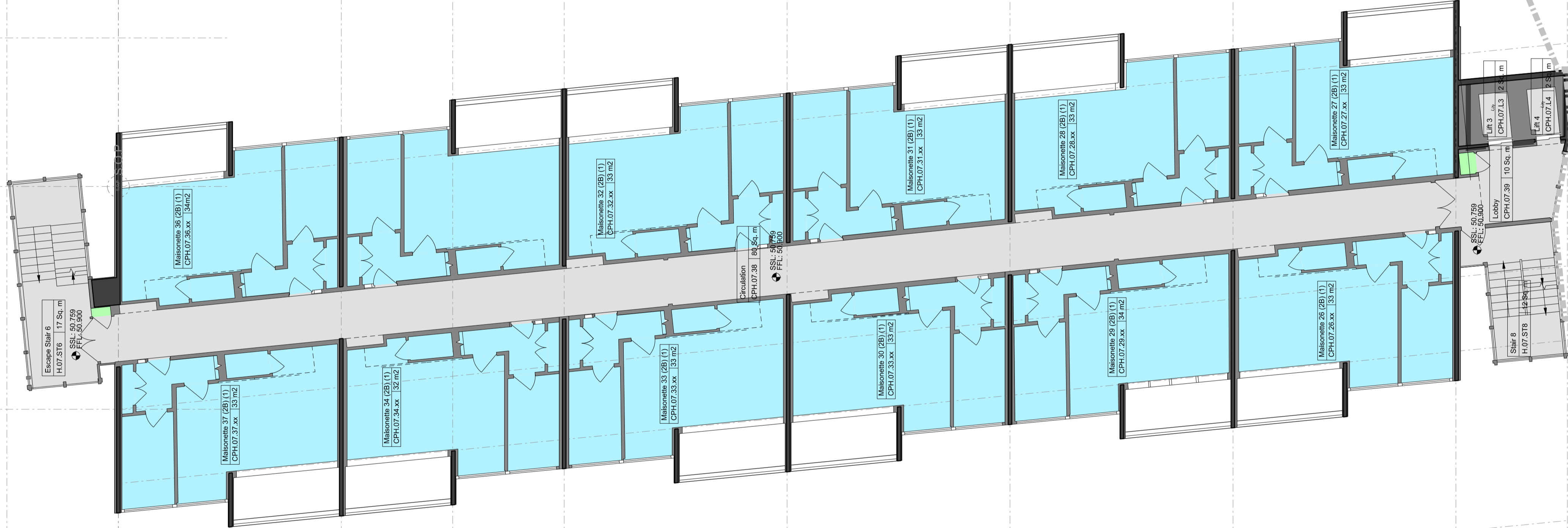
COPYRIGHT RICK MATHER ARCHITECTS LLP ©

AREA KEY

RESIDENTIAL	[Light Blue]
RETAIL	[Yellow]
PLANT	[Light Green]
CIRCULATION	[Light Grey]
CAR PARK	[Light Blue]
BACK OF HOUSE	[Dark Grey]
OFFICE	[Brown]
RESIDENTIAL AMENITY	[Purple]

KEY

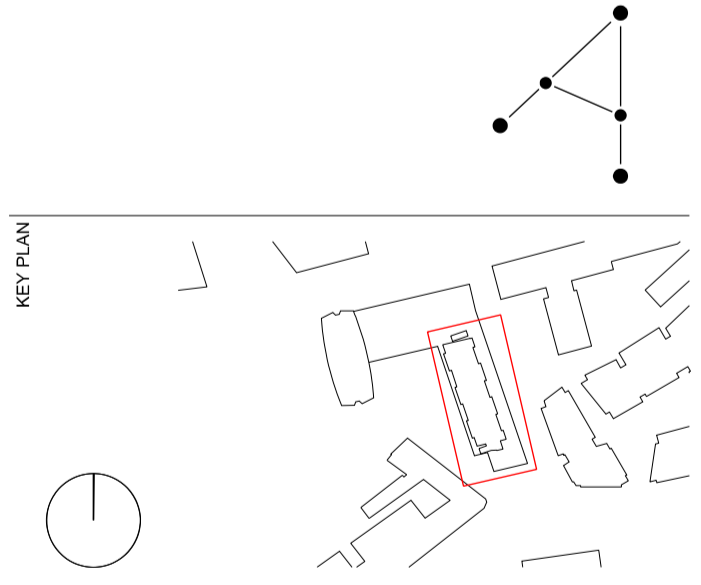
DEMOLITION	[Hatched]
EXISTING STRUCTURE	[Black]
PARTITION	[Dark Grey]
PROPOSED STRUCTURE	[Hatched]



NOTE: LOCATION OF AFFORDABLE HOUSING PROPOSAL.
SEE DRAWING SERIES 19660 (APP 1A)
AND DRAWING SERIES 19680 (APP 1B)

REVISIONS

REV	DATE	DESCRIPTION
PL1	01.04.13	PLANNING ISSUE



STATUS
PLANNING

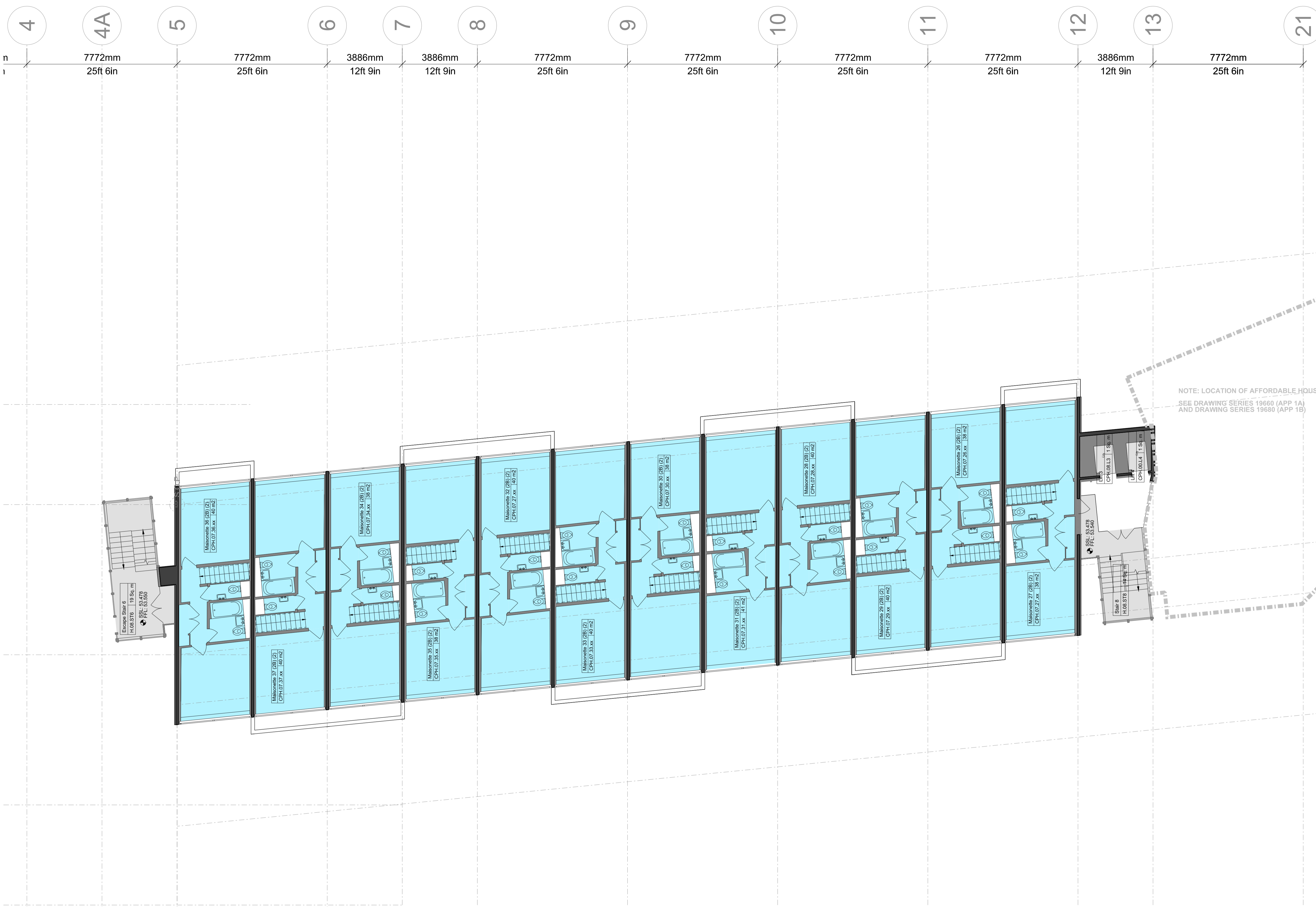
RICK MATHER ARCHITECTS ©

123 Camden High Street London NW1 7JR
T: 020 7284 1721 F: 020 7281 7626
info@rickmather.com www.rickmather.com

JOB
Centre Point
101-103 New Oxford Street
London, WC1A 1DD

TITLE
PROPOSED FLOOR PLAN
SEVENTH FLOOR
CENTRE POINT HOUSE

DRAWN	DMcC	JOB #	552	DRG #	19651-CPH	REV	PL1
CHECKED	GM	SCALE@A1	1:100	SIZE	A1	DATE	APR 13
						REV DATE	01.04.13



NOTES
 DO NOT SCALE FROM THIS DRAWING.
 CONTRACTOR TO CHECK ALL DIMENSIONS ON SITE.
 ANY DISCREPANCIES TO BE REPORTED TO THE ARCHITECT IMMEDIATELY.
 THE SURVEY INFORMATION CONTAINED IN THIS DRAWING WAS PROVIDED BY PLOWMAN CRAVEN SURVEY DRAWINGS DEC 2011 - OCT 2012.
 COPYRIGHT RICK MATHER ARCHITECTS LLP ©

AREA KEY

RESIDENTIAL	[Light Blue Box]
RETAIL	[Yellow Box]
PLANT	[Light Green Box]
CIRCULATION	[Light Grey Box]
CAR PARK	[Light Blue Box]
BACK OF HOUSE	[Dark Grey Box]
OFFICE	[Brown Box]
RESIDENTIAL AMENITY	[Purple Box]

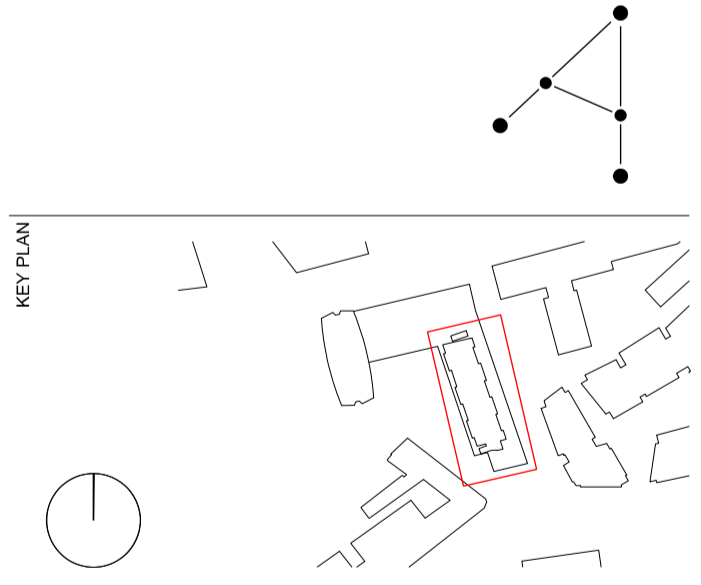
KEY

DEMOLITION	[Hatched Box]
EXISTING STRUCTURE	[Black Box]
PARTITION	[Dark Grey Box]
PROPOSED STRUCTURE	[Hatched Box]

NOTE: LOCATION OF AFFORDABLE HOUSING PROPOSAL.
 SEE DRAWING SERIES 19660 (APP 1A)
 AND DRAWING SERIES 19680 (APP 1B)

REVISIONS

REV	DATE	DESCRIPTION
PL1	01.04.13	PLANNING ISSUE



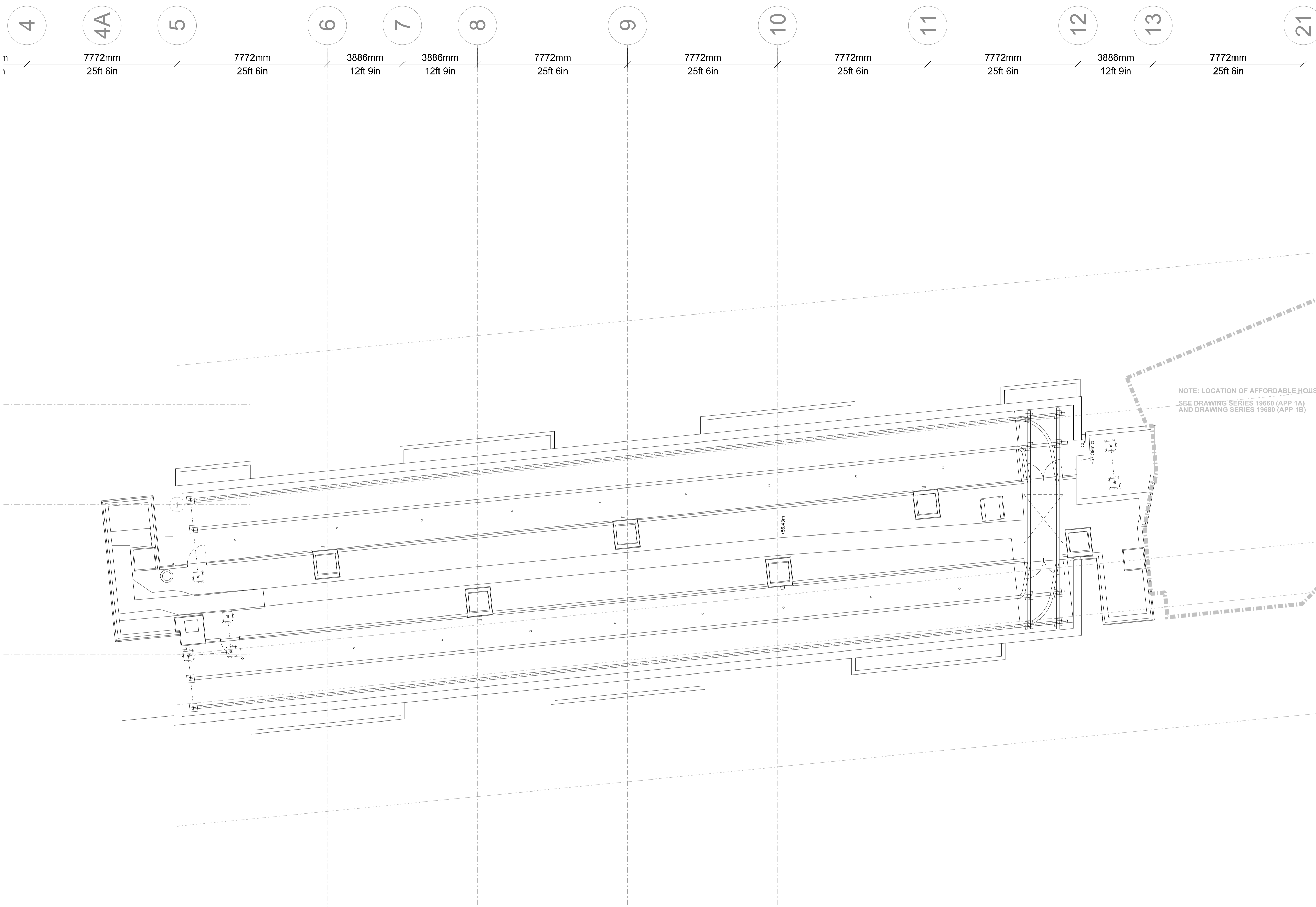
STATUS
PLANNING

RICK MATHER ARCHITECTS ©
 123 Camden High Street London NW1 7JR
 T: 020 7284 1727 F: 020 7287 7626
 info@rickmather.com www.rickmather.com

JOB
Centre Point
 101-103 New Oxford Street
 London, WC1A 1DD

TITLE
PROPOSED FLOOR PLAN
 EIGHTH FLOOR
 CENTRE POINT HOUSE

DRAWN	DMcC	JOB #	552	DRG #	19652-CPH	REV	PL1
CHECKED	GM	SCALE@A1	1:100	SIZE	A1	DATE	APR13
						REV/DATE	01.04.13



NOTES
 DO NOT SCALE FROM THIS DRAWING.
 CONTRACTOR TO CHECK ALL DIMENSIONS ON SITE.
 ANY DISCREPANCIES TO BE REPORTED TO THE ARCHITECT IMMEDIATELY.
 THE SURVEY INFORMATION CONTAINED IN THIS DRAWING WAS PROVIDED BY PLOWMAN CRAVEN SURVEY DRAWINGS DEC 2011 - OCT 2012.
 COPYRIGHT RICK MATHER ARCHITECTS LLP ©

AREA KEY

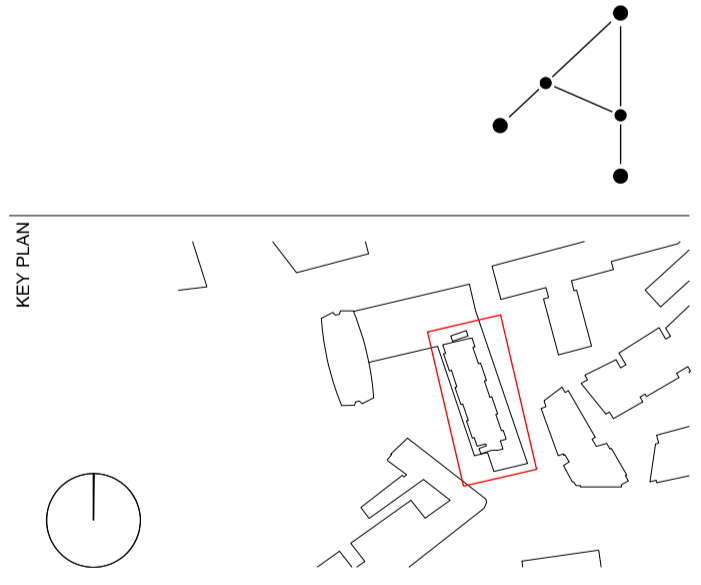
RESIDENTIAL	[Light Blue]
RETAIL	[Yellow]
PLANT	[Light Green]
CIRCULATION	[Light Grey]
CAR PARK	[Light Blue]
BACK OF HOUSE	[Dark Grey]
OFFICE	[Brown]
RESIDENTIAL AMENITY	[Purple]

KEY

DEMOLITION	[Hatched]
EXISTING STRUCTURE	[Black]
PARTITION	[Dark Grey]
PROPOSED STRUCTURE	[Hatched]

REVISIONS

REV	DATE	DESCRIPTION
PL1	01.04.13	PLANNING ISSUE



STATUS
PLANNING

RICK MATHER ARCHITECTS ©
 123 Camden High Street London NW1 7JR
 T: 020 7284 1727 F: 020 7287 7826
 info@rickmather.com www.rickmather.com

JOB
Centre Point
 101-103 New Oxford Street
 London, WC1A 1DD

TITLE
PROPOSED FLOOR PLAN
 ROOF PLAN
 CENTRE POINT HOUSE

DRAWN	DMcC	JOB #	552	DRG #	19653-CPH	REV	PL1
CHECKED	GM	SCALE@A1	1:100	SIZE	A1	DATE	APR 13
						REV/DATE	01.04.13



NOTES
 DO NOT SCALE FROM THIS DRAWING.
 CONTRACTOR TO CHECK ALL DIMENSIONS ON SITE.
 ANY DISCREPANCIES TO BE REPORTED TO THE ARCHITECT IMMEDIATELY.
 THE SURVEY INFORMATION CONTAINED IN THIS DRAWING WAS PROVIDED BY PLOWMAN CRAVEN SURVEY DRAWINGS DEC 2011 - OCT 2012.
 COPYRIGHT RICK MATHER ARCHITECTS LLP ©

AREA KEY

RESIDENTIAL	[Light Blue]
RETAIL	[Yellow]
PLANT	[Light Green]
CIRCULATION	[Light Grey]
CAR PARK	[Light Blue]
BACK OF HOUSE	[Light Grey]
OFFICE	[Light Brown]
RESIDENTIAL AMENITY	[Light Purple]

KEY

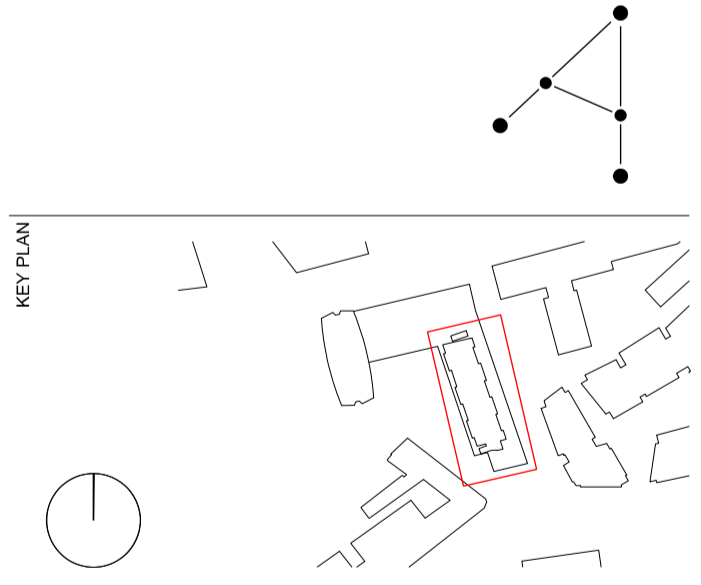
DEMOLITION	[Hatched]
EXISTING STRUCTURE	[Black]
PARTITION	[Dark Grey]
PROPOSED STRUCTURE	[Hatched]

KEY

AFFORDABLE HOUSING USE	[Light Blue]
AFFORDABLE HOUSING CIRCULATION	[Light Blue]
AFFORDABLE 1 BED	[Light Blue]
AFFORDABLE 2 BED	[Medium Blue]
AFFORDABLE 3 BED	[Dark Blue]
AFFORDABLE 4 BED	[Darkest Blue]

REVISIONS

REV	DATE	DESCRIPTION
PL1	01.04.13	PLANNING ISSUE



STATUS
PLANNING

RICK MATHER ARCHITECTS ©
 123 Camden High Street London NW1 7JR
 T: 020 7284 1727 F: 020 7281 7626
 info@rickmather.com www.rickmather.com

JOB
Centre Point
 101-103 New Oxford Street
 London, WC1A 1DD **APP 1A**

TITLE
PROPOSED FLOOR PLAN
 BASEMENT
 AFFORDABLE HOUSING BLOCK

DRAWN	DMcC	JOB #	552	DRG #	19660-CPW	REV	PL1
CHECKED	GM	SCALE@A1	1:100	SIZE	A1	DATE	APR 13
						REV/DATE	01.04.13



NOTES
 DO NOT SCALE FROM THIS DRAWING.
 CONTRACTOR TO CHECK ALL DIMENSIONS ON SITE.
 ANY DISCREPANCIES TO BE REPORTED TO THE ARCHITECT IMMEDIATELY.
 THE SURVEY INFORMATION CONTAINED IN THIS DRAWING WAS PROVIDED BY PLOWMAN CRAVEN SURVEY DRAWINGS DEC 2011 - OCT 2012.
 COPYRIGHT RICK MATHER ARCHITECTS LLP ©

AREA KEY

RESIDENTIAL	[Light Blue]
RETAIL	[Yellow]
PLANT	[Light Green]
CIRCULATION	[Light Grey]
CAR PARK	[Light Blue]
BACK OF HOUSE	[Dark Grey]
OFFICE	[Brown]
RESIDENTIAL AMENITY	[Purple]

KEY

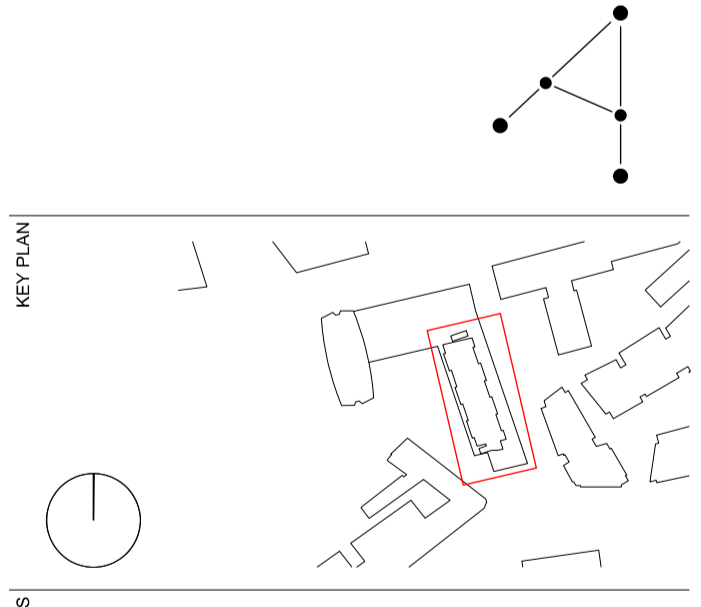
DEMOLITION	[Red Hatched]
EXISTING STRUCTURE	[Black]
PARTITION	[Dark Grey]
PROPOSED STRUCTURE	[White with Dotted]
INDICATIVE RESTAURANT ARRANGEMENT	[Circle with Dotted]

KEY

AFFORDABLE HOUSING USE	[Light Blue]
AFFORDABLE HOUSING CIRCULATION	[Light Blue]
AFFORDABLE 1 BED	[Light Blue]
AFFORDABLE 2 BED	[Medium Blue]
AFFORDABLE 3 BED	[Dark Blue]
AFFORDABLE 4 BED	[Darkest Blue]

REVISIONS

PL1	01.04.13	PLANNING ISSUE
REV	DATE	DESCRIPTION



STATUS **PLANNING**

RICK MATHER ARCHITECTS ©
 123 Camden High Street London NW1 7JR
 T: 020 7284 1727 F: 020 7287 7626
 info@rickmather.com www.rickmather.com

JOB
Centre Point
 101-103 New Oxford Street
 London, WC1A 1DD **APP 1A**

TITLE
PROPOSED FLOOR PLAN
 GROUND FLOOR
 AFFORDABLE HOUSING BLOCK

DRAWN	DMcC	JOB #	552	DRG #	19661-CPW	REV	PL1
CHECKED	GM	SCALE@A1	1:100	SIZE	A1	DATE	APR 13
						REV/DATE	01.04.13