



NOTES  
DO NOT SCALE FROM THIS DRAWING.  
CONTRACTOR TO CHECK ALL DIMENSIONS ON SITE.  
ANY DISCREPANCIES TO BE REPORTED TO THE ARCHITECT IMMEDIATELY.

THE SURVEY INFORMATION CONTAINED IN THIS DRAWING WAS PROVIDED BY PLOWMAN CRAVEN SURVEY DRAWINGS DEC 2011 - OCT 2012.

COPYRIGHT RICK MATHER ARCHITECTS LLP ©

AREA KEY

RESIDENTIAL	[Light Blue]
RETAIL	[Yellow]
PLANT	[Light Green]
CIRCULATION	[Light Grey]
CAR PARK	[Light Blue]
BACK OF HOUSE	[Dark Grey]
OFFICE	[Brown]
RESIDENTIAL AMENITY	[Purple]

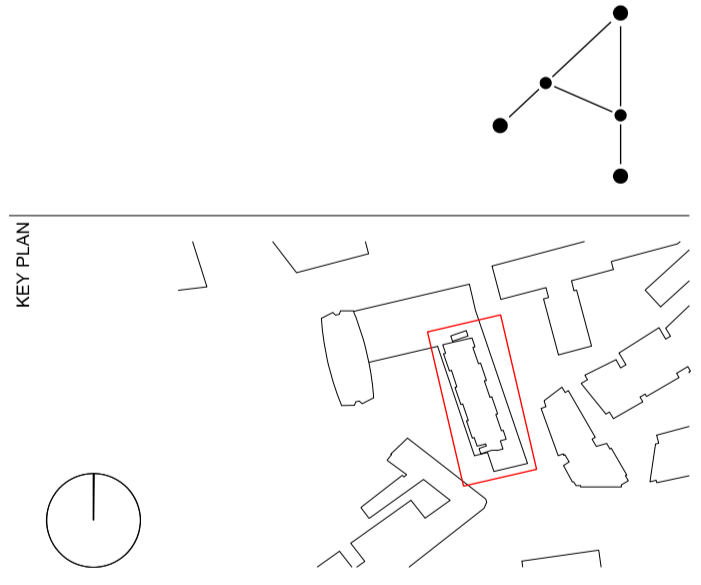
KEY

DEMOLITION	[Red Hatched]
EXISTING STRUCTURE	[Black]
PARTITION	[Dark Grey]
PROPOSED STRUCTURE	[White with Dotted Border]
INDICATIVE RESTAURANT ARRANGEMENT	[Table Icon]

NOTE: LOCATION OF AFFORDABLE HOUSING PROPOSAL.  
SEE DRAWING SERIES 19660 (APP 1A)  
AND DRAWING SERIES 19660 (APP 1B)

REVISIONS

REV	DATE	DESCRIPTION
PL1	01.04.13	PLANNING ISSUE



STATUS  
**PLANNING**

**RICK MATHER ARCHITECTS ©**

123 Camden High Street London NW1 7JR  
T: 020 7284 1727 F: 020 7287 7626  
info@rickmather.com www.rickmather.com

JOB  
**Centre Point**  
101-103 New Oxford Street  
London, WC1A 1DD

TITLE  
**PROPOSED FLOOR PLAN**  
FIRST FLOOR  
CENTRE POINT HOUSE

DRAWN	DMcC	JOB #	552	DRG #	19644-CPH	REV	PL1		
CHECKED	GM	SCALE@A1	1:100	SIZE	A1	DATE	APR 13	REV/DATE	01.04.13



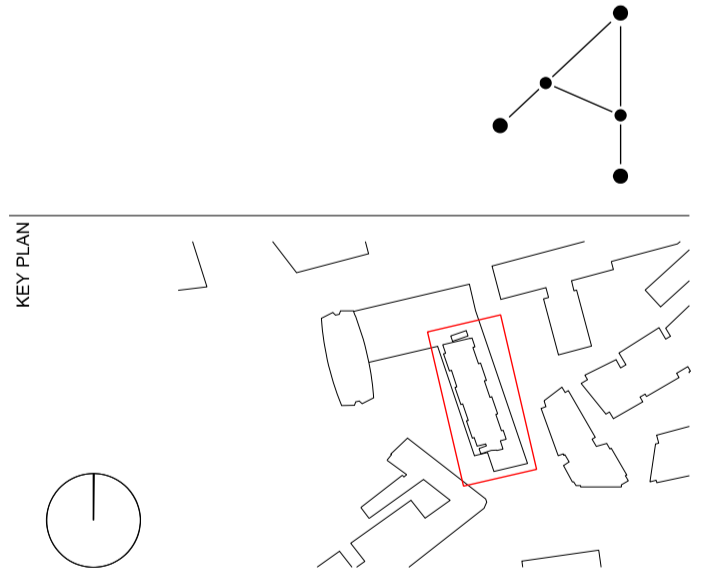
- NOTES**  
DO NOT SCALE FROM THIS DRAWING.  
CONTRACTOR TO CHECK ALL DIMENSIONS ON SITE.  
ANY DISCREPANCIES TO BE REPORTED TO THE ARCHITECT IMMEDIATELY.
- THE SURVEY INFORMATION CONTAINED IN THIS DRAWING WAS PROVIDED BY PLOWMAN CRAVEN SURVEY DRAWINGS DEC 2011 - OCT 2012.  
COPYRIGHT RICK MATHER ARCHITECTS LLP ©
- AREA KEY**
- RESIDENTIAL
  - RETAIL
  - PLANT
  - CIRCULATION
  - CAR PARK
  - BACK OF HOUSE
  - OFFICE
  - RESIDENTIAL AMENITY

- KEY**
- DEMOLITION
  - EXISTING STRUCTURE
  - PARTITION
  - PROPOSED STRUCTURE
  - INDICATIVE RESTAURANT ARRANGEMENT

NOTE: LOCATION OF AFFORDABLE HOUSING PROPOSAL.  
SEE DRAWING SERIES 19660 (APP 1A)  
AND DRAWING SERIES 19660 (APP 1B)

**REVISIONS**

REV	DATE	DESCRIPTION
PL1	01.04.13	PLANNING ISSUE



**PLANNING**

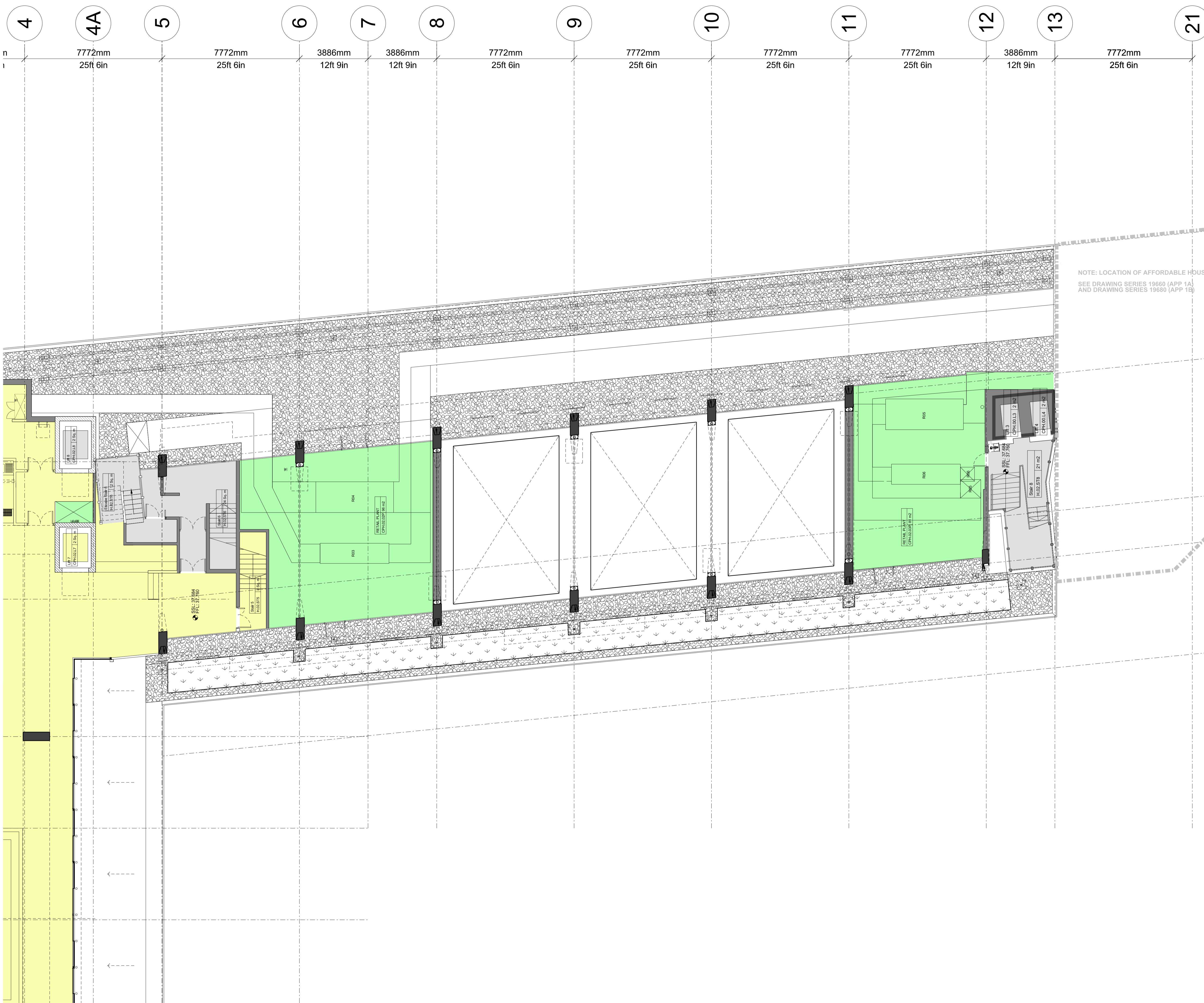
**RICK MATHER ARCHITECTS ©**

123 Camden High Street London NW1 7JR  
T: 020 7284 1727 F: 020 7287 7626  
info@rickmather.com www.rickmather.com

**JOB**  
Centre Point  
101-103 New Oxford Street  
London, WC1A 1DD

**TITLE**  
PROPOSED FLOOR PLAN  
FIRST MEZZANINE  
CENTRE POINT HOUSE

DRAWN	DMcC	JOB #	552	DRG #	19645-CPH	REV	PL1
CHECKED	GM	SCALE@A1	1:100	SIZE	A1	DATE	APR 13
						REV/DATE	01.04.13



NOTES

AREA KEY

- RESIDENTIAL
- RETAIL
- PLANT
- CIRCULATION
- CAR PARK
- BACK OF HOUSE
- OFFICE
- RESIDENTIAL AMENITY

KEY

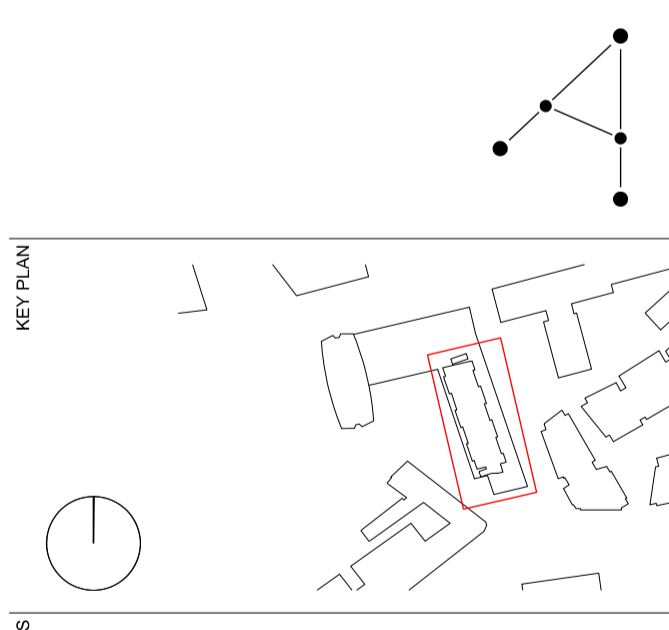
- DEMOLITION
- EXISTING STRUCTURE
- PARTITION
- PROPOSED STRUCTURE

NOTE: LOCATION OF AFFORDABLE HOUSING PROPOSAL.  
SEE DRAWING SERIES 19660 (APP 1A)  
AND DRAWING SERIES 19660 (APP 1B)

REVISIONS

REV	DATE	DESCRIPTION
PL1	01.04.13	PLANNING ISSUE

KEY PLAN



STATUS

# PLANNING

**RICK MATHER ARCHITECTS ©**

123 Camden High Street London NW1 7JR  
T: 020 7284 1727 F: 020 7287 7626  
info@rickmather.com www.rickmather.com

**Centre Point**  
101-103 New Oxford Street  
London, WC1A 1DD

**PROPOSED FLOOR PLAN**  
SECOND FLOOR  
CENTRE POINT HOUSE

DRAWN	CHECKED	SCALE	SIZE	DATE	REV
DMcC	GM	1:100	A1	APR 13	PL1

4 4A 5 6 7 8 9 10 11 12 13 21

7772mm 25ft 6in 7772mm 25ft 6in 3886mm 12ft 9in 3886mm 12ft 9in 7772mm 25ft 6in 7772mm 25ft 6in 7772mm 25ft 6in 7772mm 25ft 6in 3886mm 12ft 9in 7772mm 25ft 6in

NOTES  
DO NOT SCALE FROM THIS DRAWING.  
CONTRACTOR TO CHECK ALL DIMENSIONS ON SITE.  
ANY DISCREPANCIES TO BE REPORTED TO THE ARCHITECT IMMEDIATELY.

THE SURVEY INFORMATION CONTAINED IN THIS DRAWING WAS PROVIDED BY FLOWMAN CRAVEN SURVEY DRAWINGS DEC 2011 - OCT 2012.

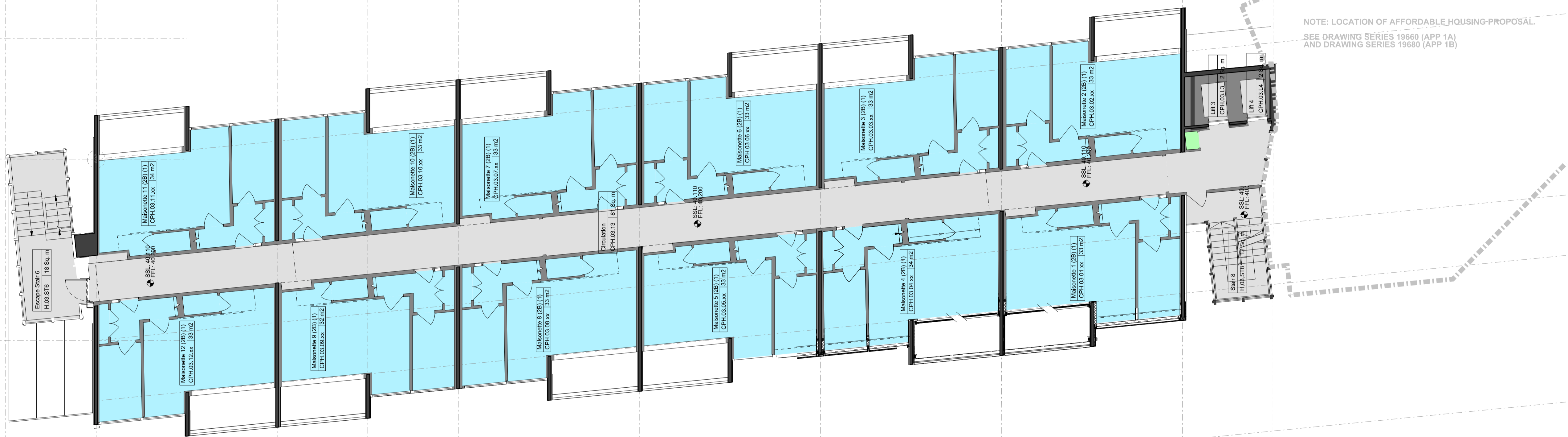
COPYRIGHT RICK MATHER ARCHITECTS LLP ©

AREA KEY

- RESIDENTIAL
- RETAIL
- PLANT
- CIRCULATION
- CAR PARK
- BACK OF HOUSE
- OFFICE
- RESIDENTIAL AMENITY

KEY

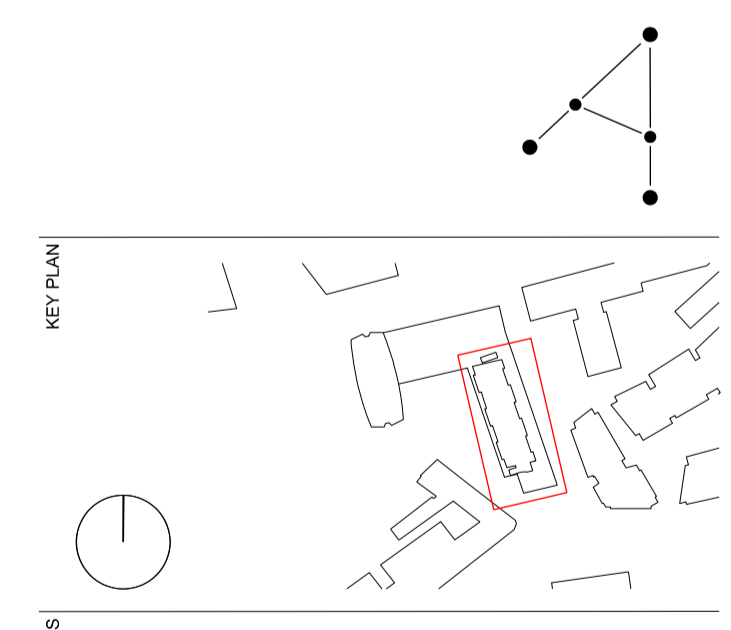
- DEMOLITION
- EXISTING STRUCTURE
- PARTITION
- PROPOSED STRUCTURE



NOTE: LOCATION OF AFFORDABLE HOUSING PROPOSAL.  
SEE DRAWING SERIES 19660 (APP 1A)  
AND DRAWING SERIES 19680 (APP 1B)

REVISIONS

REV	DATE	DESCRIPTION
PL1	01.04.13	PLANNING ISSUE



STATUS  
**PLANNING**

**RICK MATHER ARCHITECTS ©**

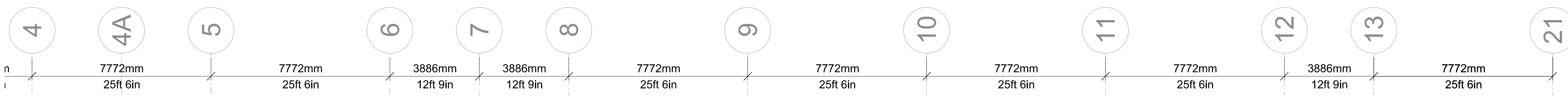
123 Camden High Street London NW1 7JR  
T: 020 7284 1727 F: 020 7287 7626  
Info@rickmather.com www.rickmather.com

JOB  
**Centre Point**  
101-103 New Oxford Street  
London, WC1A 1DD

TITLE  
**PROPOSED FLOOR PLAN**  
THIRD FLOOR  
CENTRE POINT HOUSE

DRAWN	JOB #	DRG #	REV
DMcC	552	19647-CPH	PL1

CHECKED	SCALE@A1	SIZE	DATE	REV DATE
GM	1:100	A1	APR 13	01.04.13



NOTES  
DO NOT SCALE FROM THIS DRAWING.  
CONTRACTOR TO CHECK ALL DIMENSIONS ON SITE.  
ANY DISCREPANCIES TO BE REPORTED TO THE ARCHITECT IMMEDIATELY.

THE SURVEY INFORMATION CONTAINED IN THIS DRAWING WAS PROVIDED BY PLOWMAN CRAVEN SURVEY DRAWINGS DEC 2011 - OCT 2012.

COPYRIGHT RICK MATHER ARCHITECTS LLP ©

AREA KEY

RESIDENTIAL	[Light Blue]
RETAIL	[Yellow]
PLANT	[Light Green]
CIRCULATION	[Light Grey]
CAR PARK	[Light Blue]
BACK OF HOUSE	[Dark Grey]
OFFICE	[Brown]
RESIDENTIAL AMENITY	[Purple]

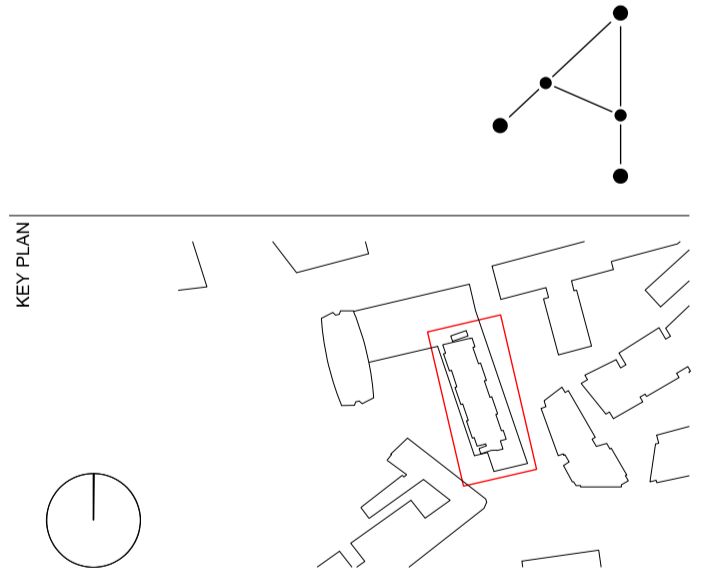
KEY

DEMOLITION	[Hatched]
EXISTING STRUCTURE	[Black]
PARTITION	[Dark Grey]
PROPOSED STRUCTURE	[Hatched]



REVISIONS

REV	DATE	DESCRIPTION
PL1	01.04.13	PLANNING ISSUE



STATUS  
**PLANNING**

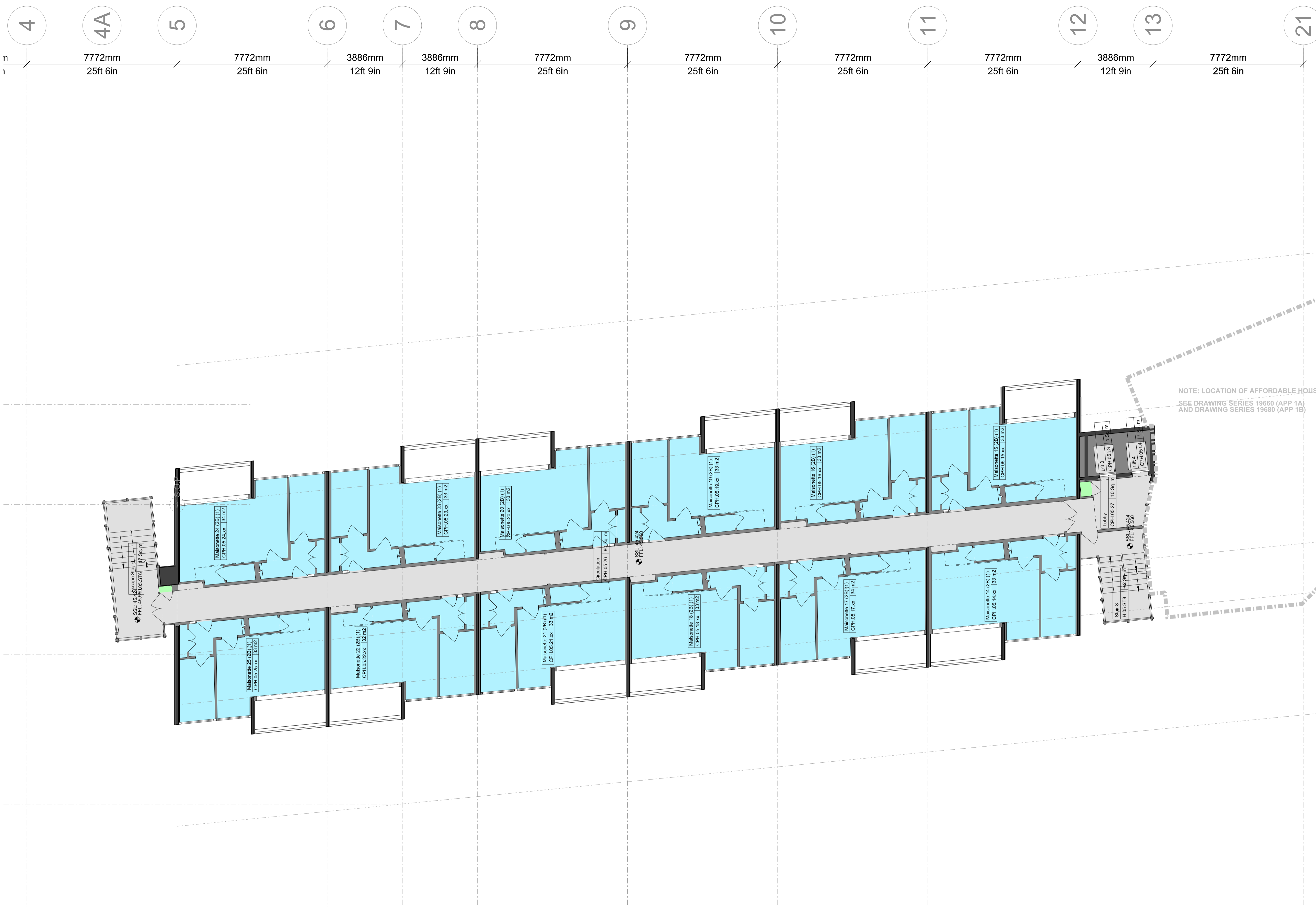
**RICK MATHER ARCHITECTS ©**

123 Camden High Street London NW1 7JR  
T: 020 7284 1727 F: 020 7287 7626  
info@rickmather.com www.rickmather.com

JOB  
**Centre Point**  
101-103 New Oxford Street  
London, WC1A 1DD

TITLE  
**PROPOSED FLOOR PLAN**  
FOURTH FLOOR  
CENTRE POINT HOUSE

DRAWN	DMcC	JOB #	552	DRG #	19648-CPH	REV	PL1
CHECKED	GM	SCALE@A1	1:100	SIZE	A1	DATE	APR 13
						REV DATE	01.04.13



NOTES  
 DO NOT SCALE FROM THIS DRAWING.  
 CONTRACTOR TO CHECK ALL DIMENSIONS ON SITE.  
 ANY DISCREPANCIES TO BE REPORTED TO THE ARCHITECT IMMEDIATELY.  
 THE SURVEY INFORMATION CONTAINED IN THIS DRAWING WAS PROVIDED BY PLOWMAN CRAVEN SURVEY DRAWINGS DEC 2011 - OCT 2012.  
 COPYRIGHT RICK MATHER ARCHITECTS LLP ©

AREA KEY

RESIDENTIAL	[Light Blue Box]
RETAIL	[Yellow Box]
PLANT	[Light Green Box]
CIRCULATION	[Light Grey Box]
CAR PARK	[Light Blue Box]
BACK OF HOUSE	[Dark Grey Box]
OFFICE	[Brown Box]
RESIDENTIAL AMENITY	[Purple Box]

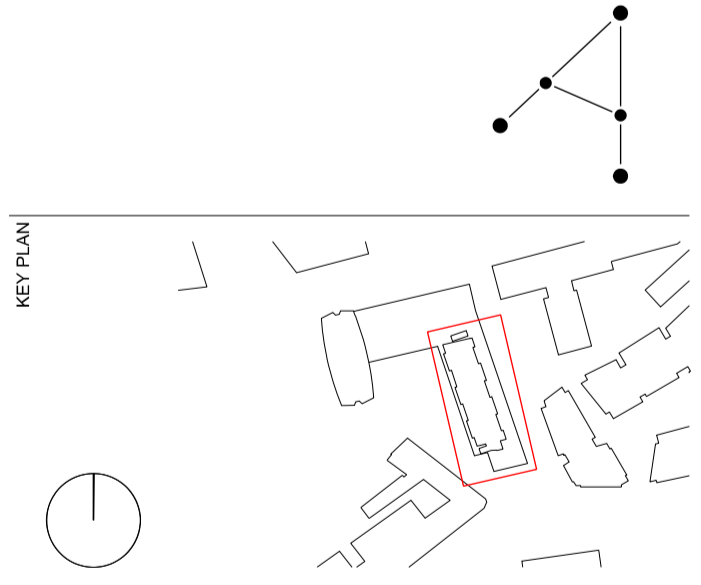
KEY

DEMOLITION	[Hatched Box]
EXISTING STRUCTURE	[Black Box]
PARTITION	[Dark Grey Box]
PROPOSED STRUCTURE	[Hatched Box]

NOTE: LOCATION OF AFFORDABLE HOUSING PROPOSAL.  
 SEE DRAWING SERIES 19660 (APP 1A)  
 AND DRAWING SERIES 19680 (APP 1B)

REVISIONS

REV	DATE	DESCRIPTION
PL1	01.04.13	PLANNING ISSUE



STATUS  
**PLANNING**

**RICK MATHER ARCHITECTS ©**  
 123 Camden High Street London NW1 7JR  
 T: 020 7284 1721 F: 020 7287 7626  
 info@rickmather.com www.rickmather.com

JOB  
**Centre Point**  
 101-103 New Oxford Street  
 London, WC1A 1DD

TITLE  
**PROPOSED FLOOR PLAN**  
 FIFTH FLOOR  
 CENTRE POINT HOUSE

DRAWN	DMcC	JOB #	552	DRG #	19649-CPH	REV	PL1
CHECKED	GM	SCALE@A1	1:100	SIZE	A1	DATE	APR 13
						REV DATE	01.04.13