

NOTES  
 DO NOT SCALE FROM THIS DRAWING.  
 CONTRACTOR TO CHECK ALL DIMENSIONS ON SITE.  
 ANY DISCREPANCIES TO BE REPORTED TO THE ARCHITECT IMMEDIATELY.

THE SURVEY INFORMATION CONTAINED IN THIS DRAWING WAS PROVIDED BY PLOWMAN CRAVEN SURVEY DRAWINGS DEC 2011 - OCT 2012.

COPYRIGHT RICK MATHER ARCHITECTS LLP ©

AREA KEY

RESIDENTIAL	[Light Blue Box]
RETAIL	[Yellow Box]
PLANT	[Green Box]
CIRCULATION	[Grey Box]
CAR PARK	[Light Blue Box]
BACK OF HOUSE	[Dark Grey Box]
OFFICE	[Brown Box]
RESIDENTIAL AMENITY	[Purple Box]

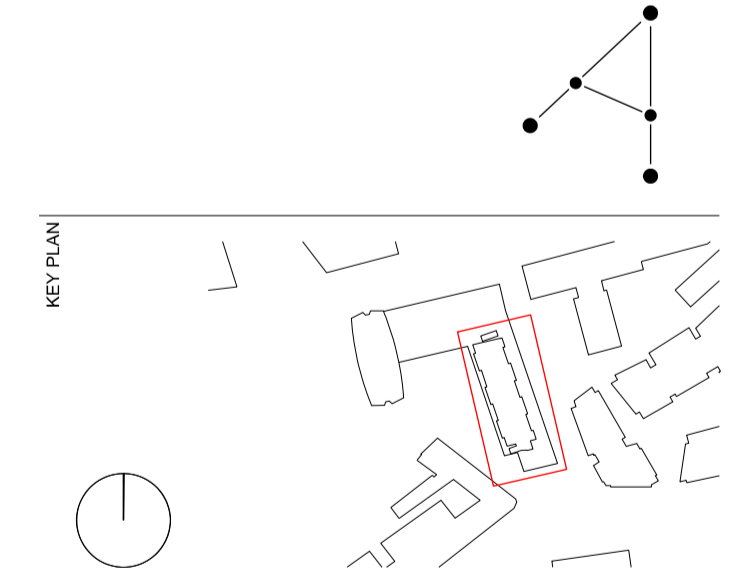
KEY

DEMOLITION	[Orange Hatched Box]
EXISTING STRUCTURE	[Black Box]
PARTITION	[Dark Grey Box]
PROPOSED STRUCTURE	[Diagonal Hatched Box]

- Lift removed
- Proposed position of riser
- Proposed location of new stair
- Retrofit plant rooms removed
- Holes cut in slab to create clerestory

REVISIONS

REV	DATE	DESCRIPTION
PL1	01.04.13	PLANNING ISSUE



STATUS **PLANNING**

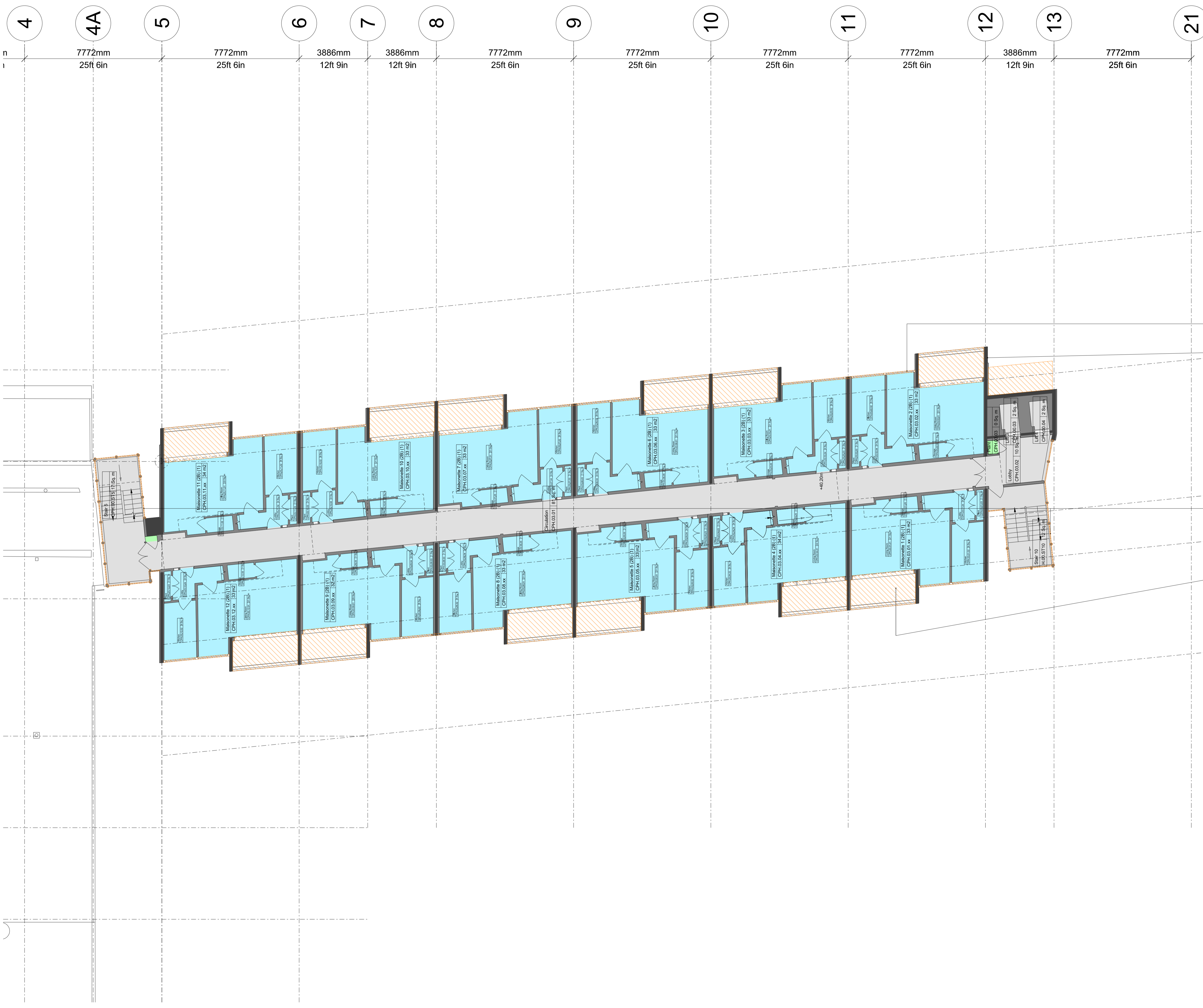
**RICK MATHER ARCHITECTS ©**

123 Camden High Street London NW1 7JR  
 T: 020 7284 1727 F: 020 7287 7826  
 info@rickmather.com www.rickmather.com

JOB  
**Centre Point**  
 101-103 New Oxford Street  
 London, WC1A 1DD

TITLE  
**EXISTING FLOOR PLAN**  
 SECOND FLOOR  
 CENTRE POINT HOUSE

DRAWN	DMcC	JOB #	552	DRG #	19346-CPH	REV	PL1
CHECKED	GM	SCALE@A1	1:100	SIZE	A1	DATE	APR 13
				REV/DATE			01.04.13



NOTES  
DO NOT SCALE FROM THIS DRAWING.  
CONTRACTOR TO CHECK ALL DIMENSIONS ON SITE.  
ANY DISCREPANCIES TO BE REPORTED TO THE ARCHITECT IMMEDIATELY.

THE SURVEY INFORMATION CONTAINED IN THIS DRAWING WAS PROVIDED BY PLOWMAN CRAVEN SURVEY DRAWINGS DEC 2011 - OCT 2012.

COPYRIGHT RICK MATHER ARCHITECTS LLP ©

AREA KEY

RESIDENTIAL	[Light Blue]
RETAIL	[Yellow]
PLANT	[Light Green]
CIRCULATION	[Light Grey]
CAR PARK	[Light Blue]
BACK OF HOUSE	[Dark Grey]
OFFICE	[Brown]
RESIDENTIAL AMENITY	[Purple]

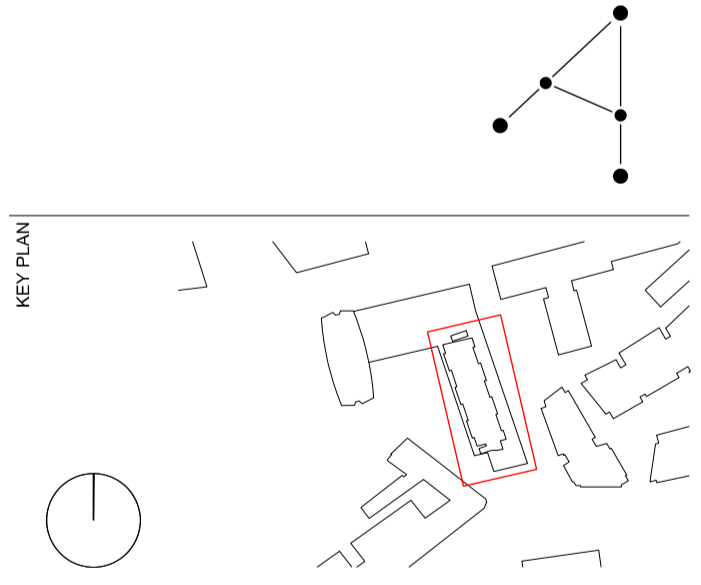
KEY

DEMOLITION	[Hatched Orange]
EXISTING STRUCTURE	[Black]
PARTITION	[Dark Grey]
PROPOSED STRUCTURE	[Hatched Grey]

- Curtain glazing removed
- Tiling Repaired
- Stair core glazing and frames removed
- Balconies insulated, waterproofed and finished with new decking and repaired tiling.

REVISIONS

PL	REV	DATE	DESCRIPTION
PL1	01.04.13	PLANNING ISSUE	



STATUS **PLANNING**

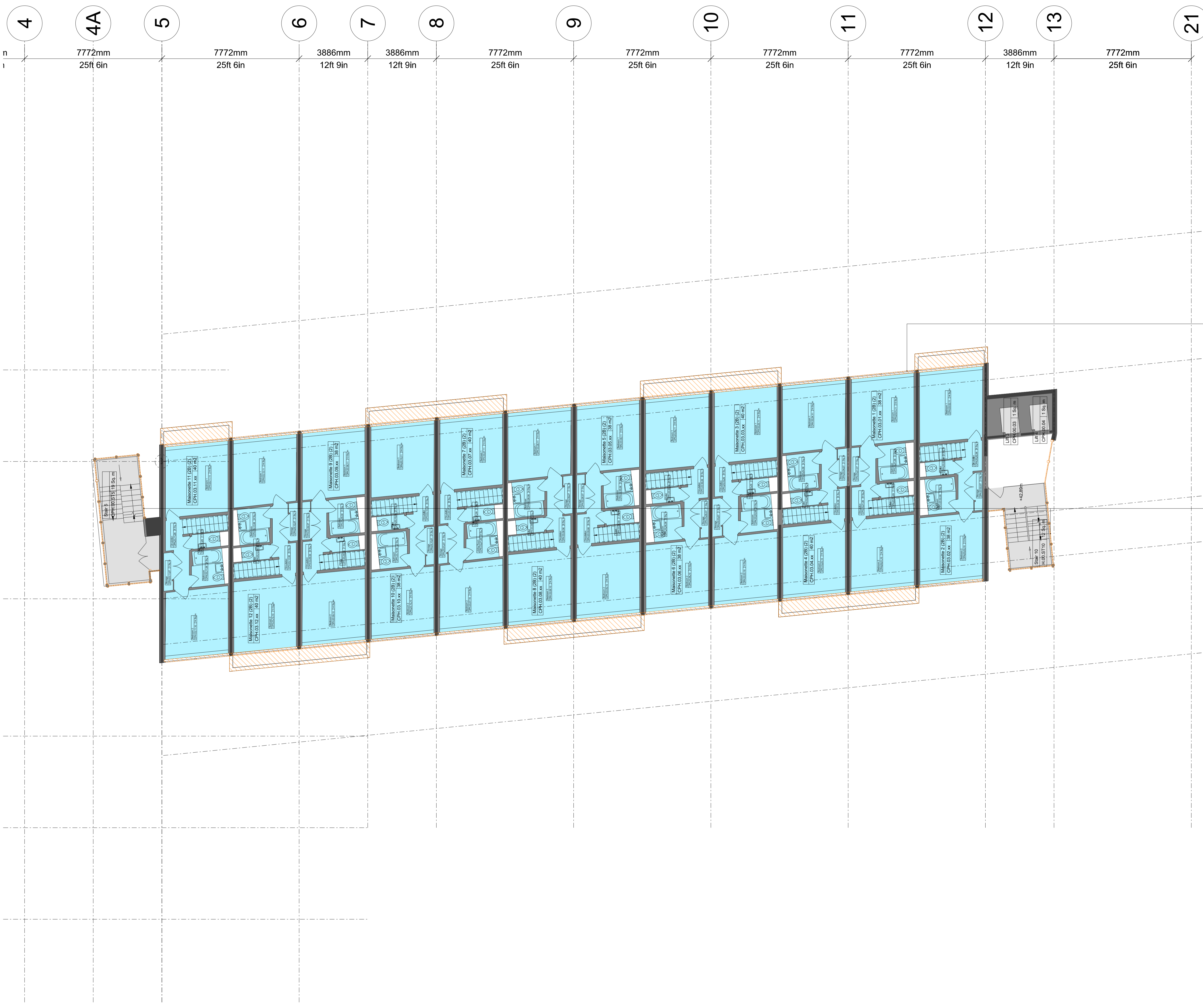
**RICK MATHER ARCHITECTS ©**

123 Camden High Street London NW1 7JR  
T: 020 7284 1727 F: 020 7281 7626  
info@rickmather.com www.rickmather.com

JOB  
**Centre Point**  
101-103 New Oxford Street  
London, WC1A 1DD

TITLE  
**EXISTING FLOOR PLAN**  
THIRD FLOOR  
CENTRE POINT HOUSE

DRAWN	DMcC	JOB #	552	DRG #	19347-CPH	REV	PL1		
CHECKED	GM	SCALE@A1	1:100	SIZE	A1	DATE	APR 13	REV DATE	01.04.13



NOTES  
DO NOT SCALE FROM THIS DRAWING.  
CONTRACTOR TO CHECK ALL DIMENSIONS ON SITE.  
ANY DISCREPANCIES TO BE REPORTED TO THE ARCHITECT IMMEDIATELY.

THE SURVEY INFORMATION CONTAINED IN THIS DRAWING WAS PROVIDED BY PLOWMAN CRAVEN SURVEY DRAWINGS DEC 2011 - OCT 2012.

COPYRIGHT RICK MATHER ARCHITECTS LLP ©

AREA KEY

RESIDENTIAL	Light Blue
RETAIL	Yellow
PLANT	Green
CIRCULATION	Grey
CAR PARK	Light Blue
BACK OF HOUSE	Dark Grey
OFFICE	Brown
RESIDENTIAL AMENITY	Purple

KEY

DEMOLITION	Orange Hatched
EXISTING STRUCTURE	Black Solid
PARTITION	Dark Grey Solid
PROPOSED STRUCTURE	Light Blue Hatched

V  
7201mm  
23ft 7.5in

U  
7772mm  
25ft 6in

W  
2591mm  
8ft 6in

T  
6286mm  
20ft 7.5in

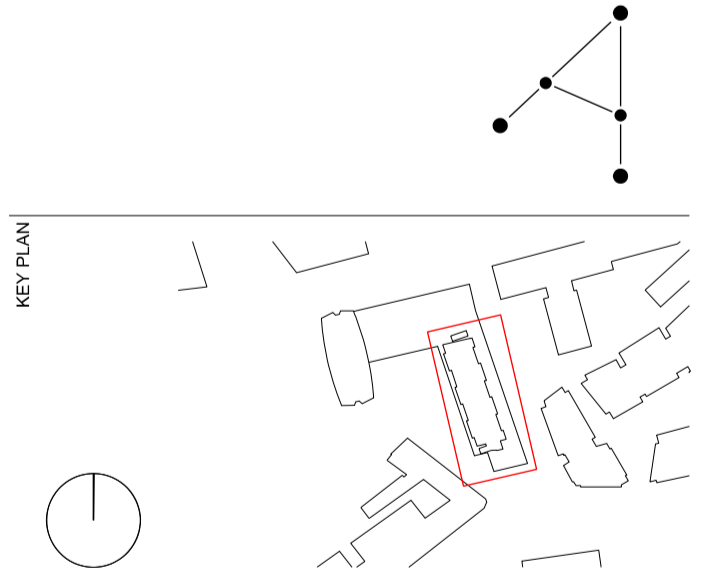
S

Curtain glazing removed

Stair core glazing and frames removed

REVISIONS

PL	01.04.13	PLANNING ISSUE
REV	DATE	DESCRIPTION



STATUS  
**PLANNING**

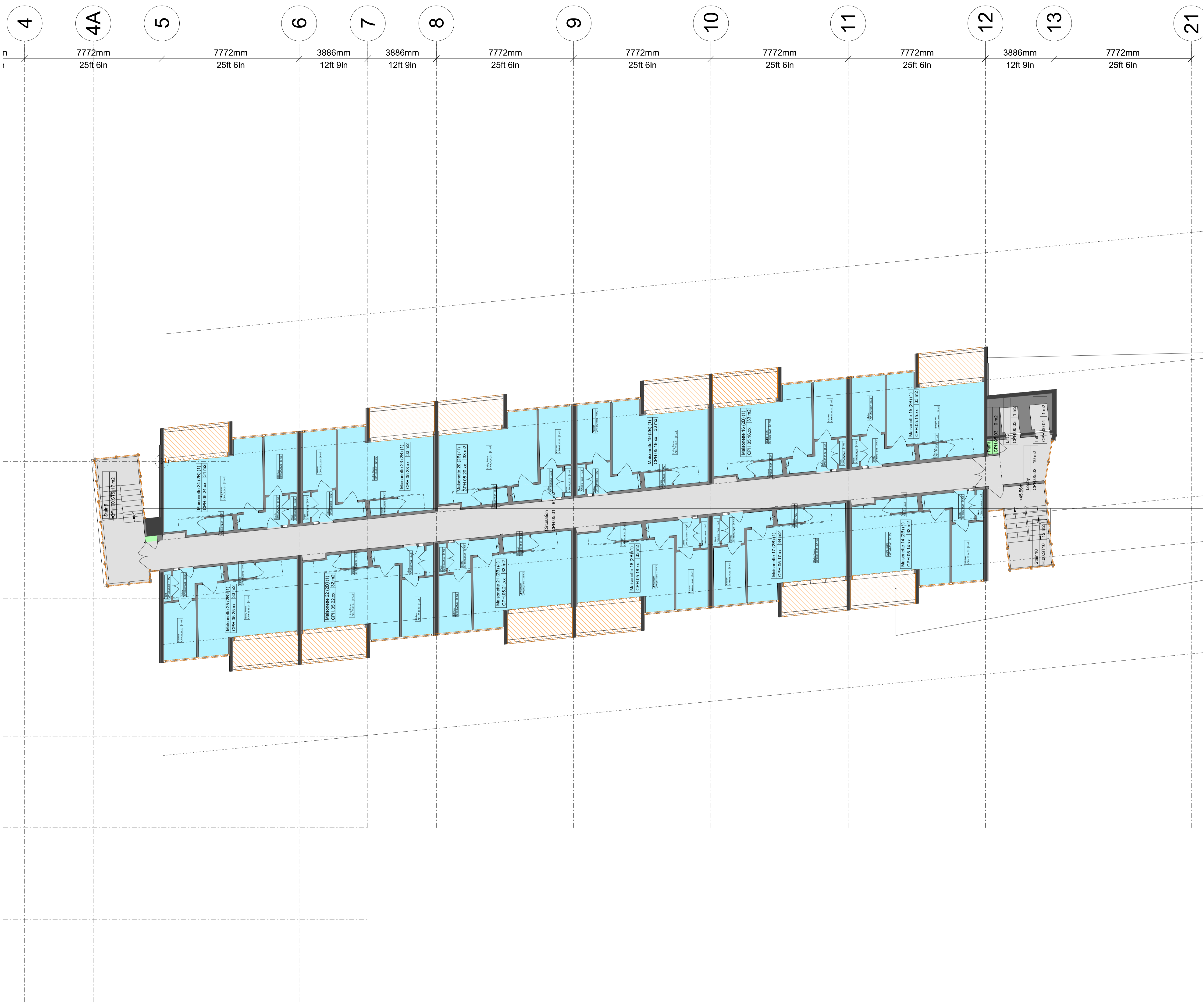
**RICK MATHER ARCHITECTS ©**

123 Camden High Street London NW1 7JR  
T: 020 7284 1727 F: 020 7287 7626  
info@rickmather.com www.rickmather.com

JOB  
**Centre Point**  
101-103 New Oxford Street  
London, WC1A 1DD

TITLE  
**EXISTING FLOOR PLAN**  
FOURTH FLOOR  
CENTRE POINT HOUSE

DRAWN	DMcC	JOB #	552	DRG #	19348-CPH	REV	PL1
CHECKED	GM	SCALE@A1	1:100	SIZE	A1	DATE	APR 13
						REV/DATE	01.04.13



NOTES  
DO NOT SCALE FROM THIS DRAWING.  
CONTRACTOR TO CHECK ALL DIMENSIONS ON SITE.  
ANY DISCREPANCIES TO BE REPORTED TO THE ARCHITECT IMMEDIATELY.  
THE SURVEY INFORMATION CONTAINED IN THIS DRAWING WAS PROVIDED BY PLOWMAN CRAVEN SURVEY DRAWINGS DEC 2011 - OCT 2012.  
COPYRIGHT RICK MATHER ARCHITECTS LLP ©

AREA KEY

RESIDENTIAL	Light Blue
RETAIL	Yellow
PLANT	Green
CIRCULATION	Grey
CAR PARK	Light Blue
BACK OF HOUSE	Dark Grey
OFFICE	Brown
RESIDENTIAL AMENITY	Purple

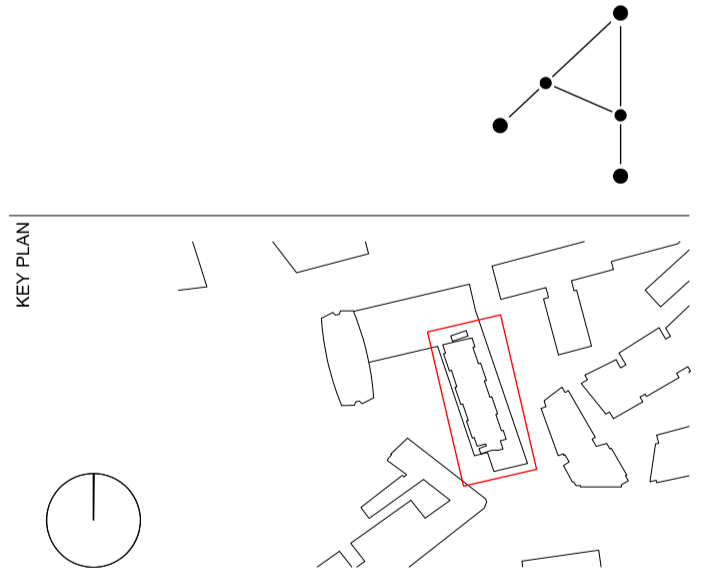
KEY

DEMOLITION	Orange Hatched
EXISTING STRUCTURE	Black
PARTITION	Dark Grey
PROPOSED STRUCTURE	Light Blue Hatched

- Curtain glazing removed
- Tiling Repaired
- Stair core glazing and frames removed
- Balconies insulated, waterproofed and finished with new decking and repaired tiling.

REVISIONS

REV	DATE	DESCRIPTION
PL1	01.04.13	PLANNING ISSUE



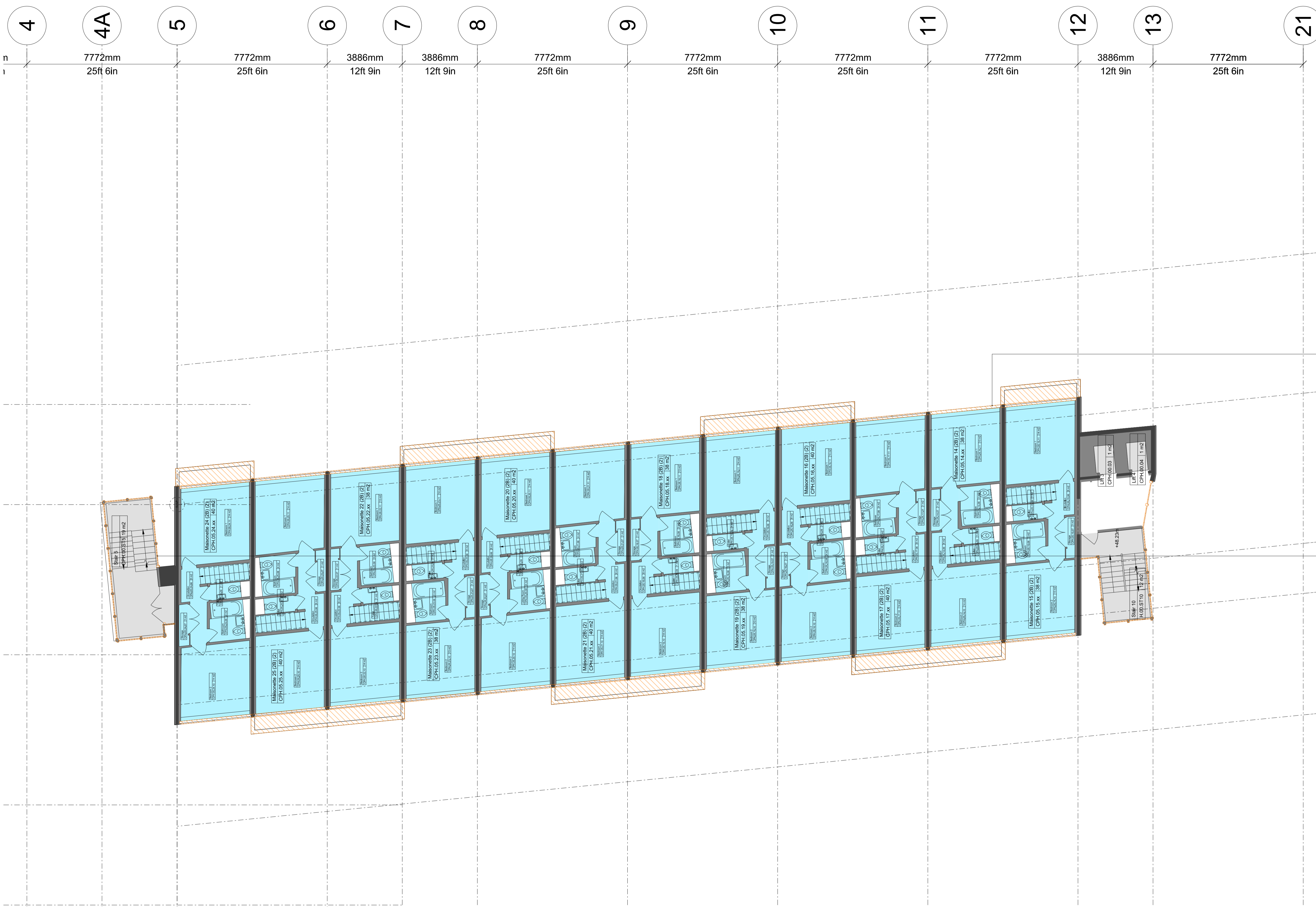
STATUS **PLANNING**

**RICK MATHER ARCHITECTS ©**  
123 Camden High Street London NW1 7JR  
T: 020 7284 1727 F: 020 7287 7826  
info@rickmather.com www.rickmather.com

JOB  
**Centre Point**  
101-103 New Oxford Street  
London, WC1A 1DD

TITLE  
**EXISTING FLOOR PLAN**  
FIFTH FLOOR  
CENTRE POINT HOUSE

DRAWN	DMcC	JOB #	552	DRG #	19349-CPH	REV	PL1
CHECKED	GM	SCALE@A1	1:100	SIZE	A1	DATE	APR 13
						REV DATE	01.04.13



NOTES  
 DO NOT SCALE FROM THIS DRAWING.  
 CONTRACTOR TO CHECK ALL DIMENSIONS ON SITE.  
 ANY DISCREPANCIES TO BE REPORTED TO THE ARCHITECT IMMEDIATELY.

THE SURVEY INFORMATION CONTAINED IN THIS DRAWING WAS PROVIDED BY PLOWMAN CRAVEN SURVEY DRAWINGS DEC 2011 - OCT 2012.

COPYRIGHT RICK MATHER ARCHITECTS LLP ©

AREA KEY

RESIDENTIAL	[Light Blue]
RETAIL	[Yellow]
PLANT	[Green]
CIRCULATION	[Grey]
CAR PARK	[Light Blue]
BACK OF HOUSE	[Dark Grey]
OFFICE	[Brown]
RESIDENTIAL AMENITY	[Purple]

KEY

DEMOLITION	[Hatched]
EXISTING STRUCTURE	[Black]
PARTITION	[Dark Grey]
PROPOSED STRUCTURE	[Light Blue with Hatching]

V  
 7201mm  
 23ft 7.5in

U  
 7772mm  
 25ft 6in

W  
 2591mm  
 8ft 6in

T  
 6286mm  
 20ft 7.5in

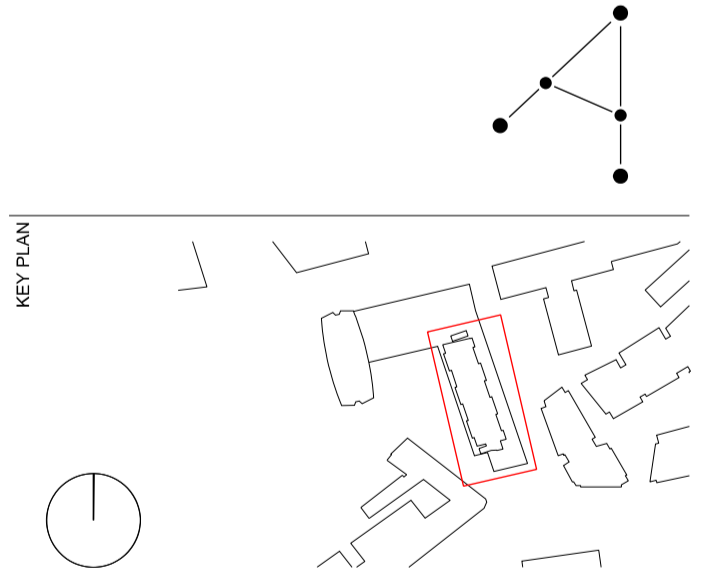
S

Curtain glazing removed

Stair core glazing and frames removed

REVISIONS

PL1	01.04.13	PLANNING ISSUE
REV	DATE	DESCRIPTION



STATUS  
**PLANNING**

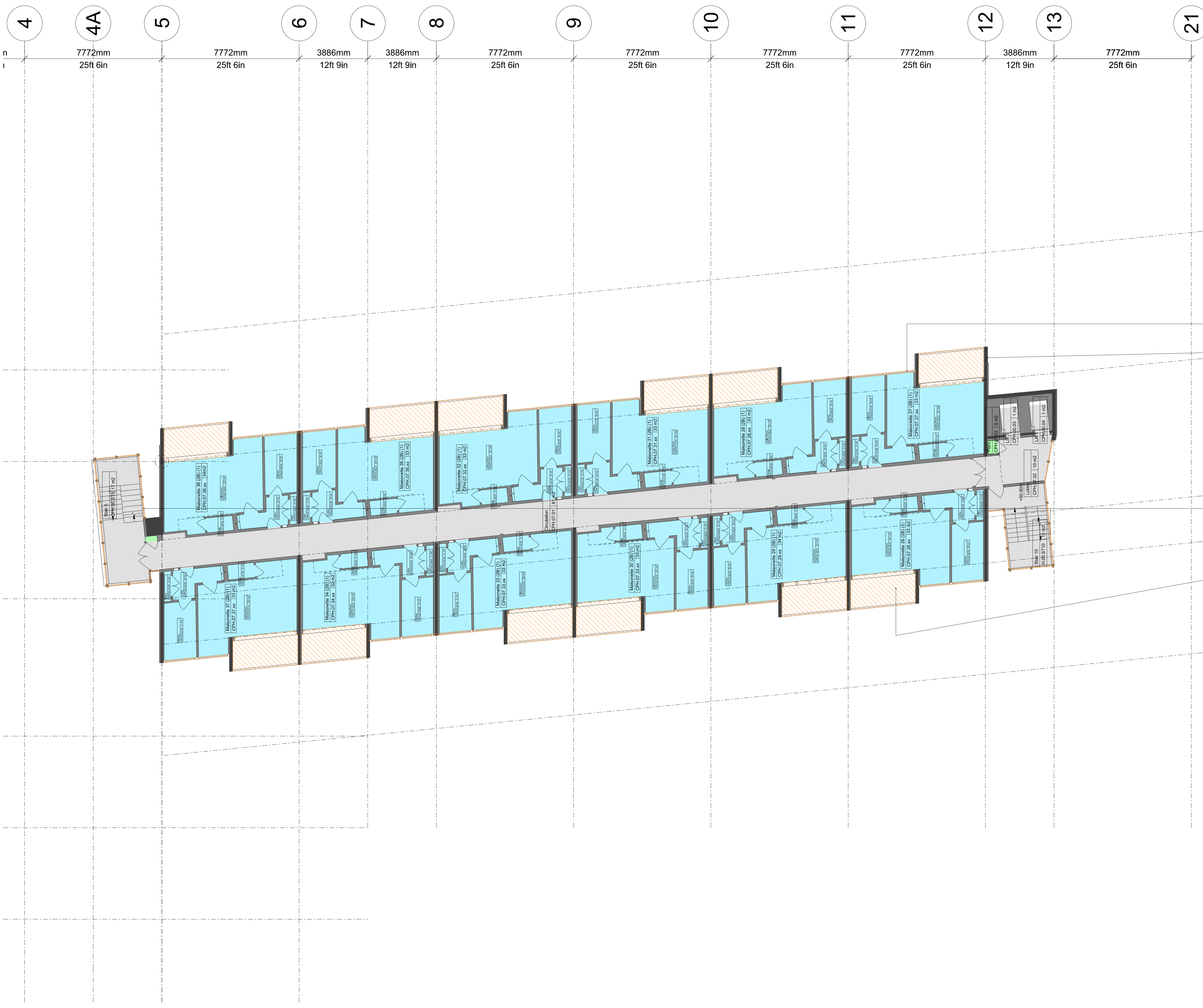
**RICK MATHER ARCHITECTS ©**

123 Camden High Street London NW1 7JR  
 T: 020 7284 1727 F: 020 7287 7626  
 info@rickmather.com www.rickmather.com

JOB  
**Centre Point**  
 101-103 New Oxford Street  
 London, WC1A 1DD

TITLE  
**EXISTING FLOOR PLAN**  
 SIXTH FLOOR  
 CENTRE POINT HOUSE

DRAWN	DMcC	JOB #	552	DRG #	19350-CPH	REV	PL1		
CHECKED	GM	SCALE@A1	1:100	SIZE	A1	DATE	APR 13	REV DATE	01.04.13



NOTES  
DO NOT SCALE FROM THIS DRAWING.  
CONTRACTOR TO CHECK ALL DIMENSIONS ON SITE.  
ANY DISCREPANCIES TO BE REPORTED TO THE ARCHITECT IMMEDIATELY.  
THE SURVEY INFORMATION CONTAINED IN THIS DRAWING WAS PROVIDED BY PLOWMAN CRAVEN SURVEY DRAWINGS DEC 2011 - OCT 2012.  
COPYRIGHT RICK MATHER ARCHITECTS LLP ©

AREA KEY

RESIDENTIAL	Light Blue
RETAIL	Yellow
PLANT	Green
CIRCULATION	Grey
CAR PARK	Light Blue
BACK OF HOUSE	Grey
OFFICE	Brown
RESIDENTIAL AMENITY	Purple

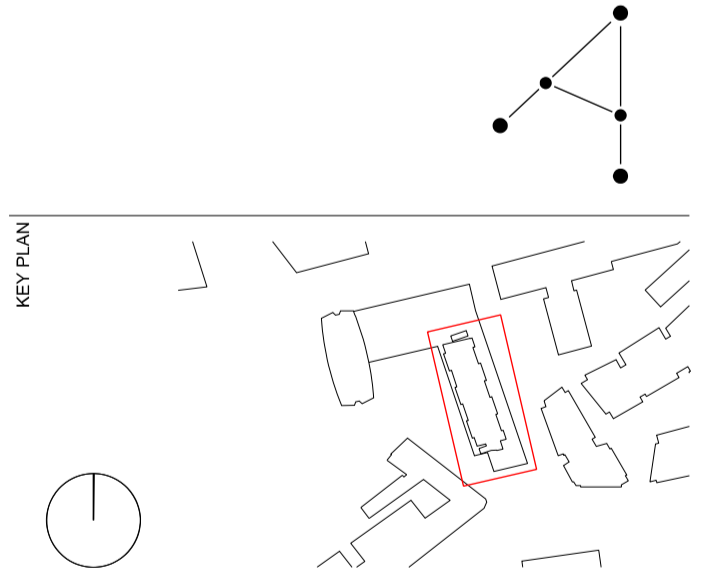
KEY

DEMOLITION	Orange Hatched
EXISTING STRUCTURE	Black
PARTITION	Dark Grey
PROPOSED STRUCTURE	Light Blue Hatched

- Curtain glazing removed
- Tiling Repaired
- Stair core glazing and frames removed
- Balconies insulated, waterproofed and finished with new decking and repaired tiling.

REVISIONS

PL	REV	DATE	DESCRIPTION
PL1	01.04.13	PLANNING ISSUE	



STATUS  
**PLANNING**

**RICK MATHER ARCHITECTS ©**

123 Camden High Street London NW1 7JR  
T: 020 7284 1727 F: 020 7281 7626  
info@rickmather.com www.rickmather.com

JOB  
**Centre Point**  
101-103 New Oxford Street  
London, WC1A 1DD

TITLE  
**EXISTING FLOOR PLAN**  
SEVENTH FLOOR  
CENTRE POINT HOUSE

DRAWN	DMcC	JOB #	552	DRG #	19351-CPH	REV	PL1		
CHECKED	GM	SCALE@A1	1:100	SIZE	A1	DATE	APR 13	REV/DATE	01.04.13