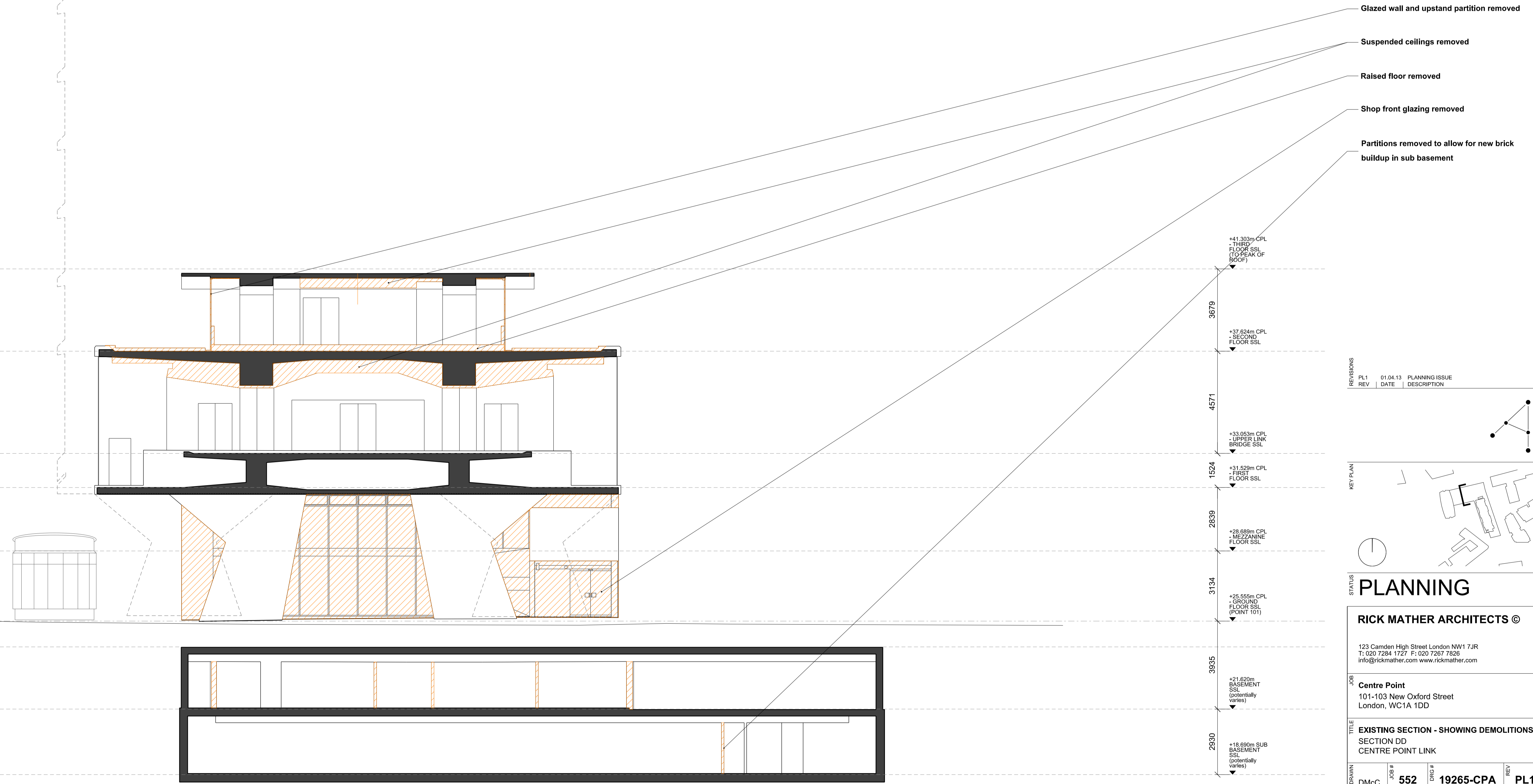


NOTES
 DO NOT SCALE FROM THIS DRAWING.
 CONTRACTOR TO CHECK ALL DIMENSIONS ON SITE.
 ANY DISCREPANCIES TO BE REPORTED TO THE ARCHITECT IMMEDIATELY.
 THE SURVEY INFORMATION CONTAINED IN THIS DRAWING WAS PROVIDED BY PLOWMAN CRAVEN SURVEY DRAWINGS DEC 2011 - OCT 2012.
 COPYRIGHT RICK MATHER ARCHITECTS LLP ©

NOTE: Existing granolithic tarmac topping to be scabbled off in both basement levels

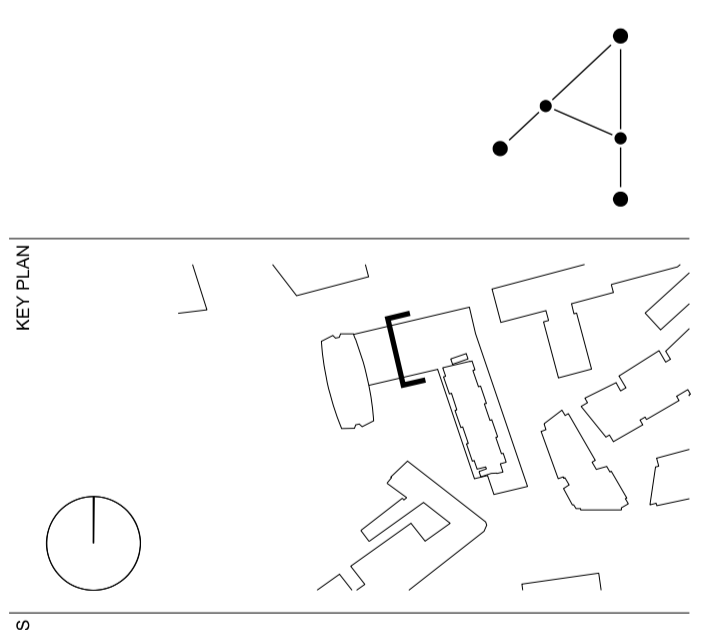
KEY

DEMOLITION	
EXISTING STRUCTURE	
PARTITION	
PROPOSED STRUCTURE	



REVISIONS

REV	DATE	DESCRIPTION
PL1	01.04.13	PLANNING ISSUE



STATUS
PLANNING

RICK MATHER ARCHITECTS ©
 123 Camden High Street London NW1 7JR
 T: 020 7284 1727 F: 020 7287 7826
 info@rickmather.com www.rickmather.com

JOB
Centre Point
 101-103 New Oxford Street
 London, WC1A 1DD

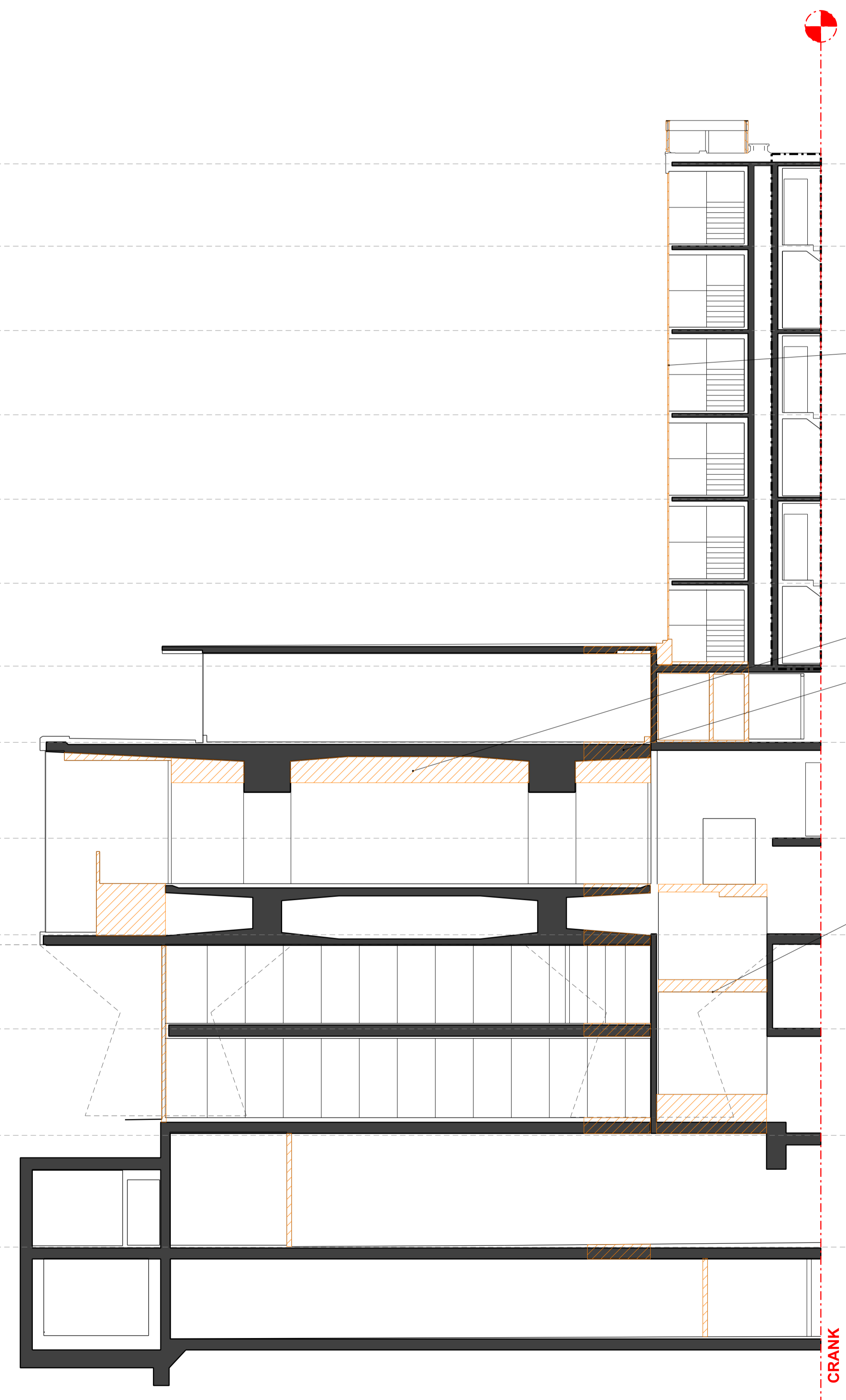
TITLE
EXISTING SECTION - SHOWING DEMOLITIONS
 SECTION DD
 CENTRE POINT LINK

DRAWN	DMcC	JOB #	552	DRG #	19265-CPA	REV	PL1
CHECKED	GM	SCALE@A1	1:100	SIZE	A1	DATE	APR 13
						REV/DATE	01.04.13

NOTES
 DO NOT SCALE FROM THIS DRAWING.
 CONTRACTOR TO CHECK ALL DIMENSIONS ON SITE.
 ANY DISCREPANCIES TO BE REPORTED TO THE ARCHITECT IMMEDIATELY.
 THE SURVEY INFORMATION CONTAINED IN THIS DRAWING WAS PROVIDED BY PLOWMAN CRAVEN SURVEY DRAWINGS DEC 2011 - OCT 2012.
 COPYRIGHT RICK MATHER ARCHITECTS LLP ©

NOTE: Existing granolithic tarmac topping to be scabbled off in both basement levels

+56.100m CPH
- EXISTING ROOF SSL
2621
+53.478m CPH
- EIGHTH FLOOR SSL
2683
+50.795m CPH
- SEVENTH FLOOR SSL
2684
+48.111m CPH
- SIXTH FLOOR SSL
2687
+45.424m CPH
- FIFTH FLOOR SSL
2674
+42.750m CPH
- FOURTH FLOOR SSL
2640
+40.110m CPH
- THIRD FLOOR SSL
2426
+37.684m CPH
- SECOND FLOOR SSL
3050
+34.634m CPH
- FIRST FLOOR MEZZANINE SSL
3074
+31.580m CPH
- FIRST FLOOR SSL
2995
+28.565m CPH
- MEZZANINE FLOOR SSL
3390
+25.175m CPH
- GROUND FLOOR SSL
3555
+21.650m BASEMENT SSL (potentially varies)
2930
+18.690m SUB BASEMENT SSL (potentially varies)



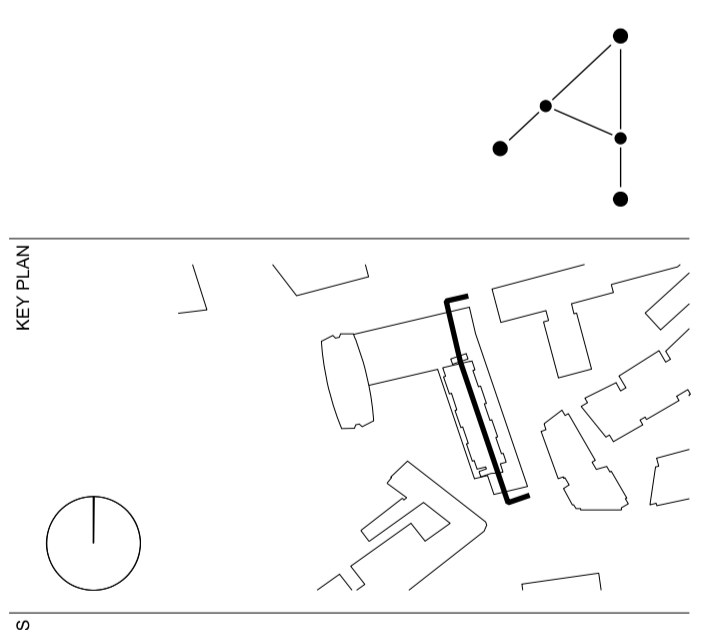
KEY

DEMOLITION	
EXISTING STRUCTURE	
PARTITION	
PROPOSED STRUCTURE	

- Stair core glazing and frames removed
- Suspended ceiling removed
- Opening formed through PT slab for lifts
- Proposed location of new lift

REVISIONS

REV	DATE	DESCRIPTION
PL1	01.04.13	PLANNING ISSUE



STATUS
PLANNING

RICK MATHER ARCHITECTS ©
 123 Camden High Street London NW1 7JR
 T: 020 7284 1727 F: 020 7281 7620
 info@rickmather.com www.rickmather.com

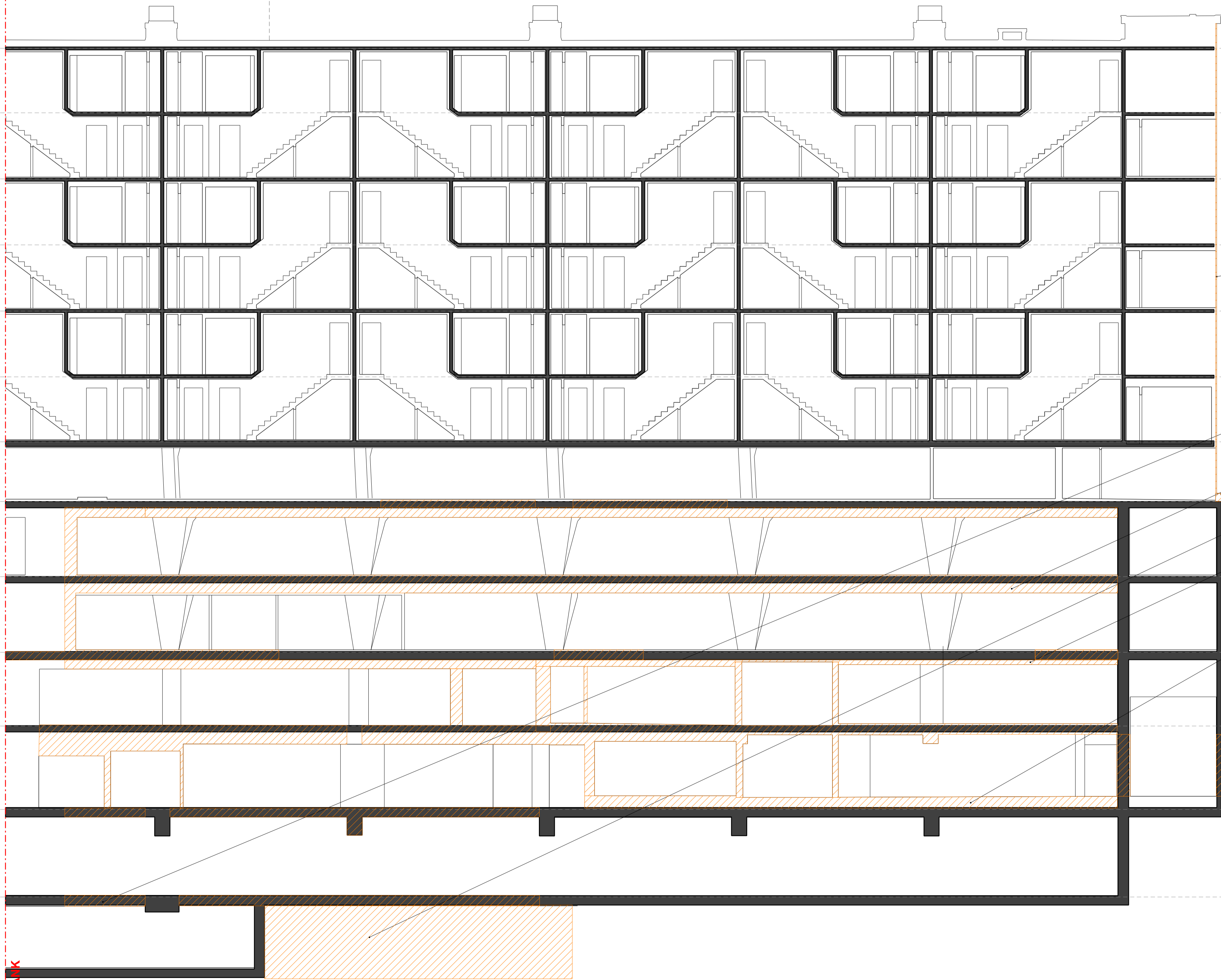
JOB
Centre Point
 101-103 New Oxford Street
 London, WC1A 1DD

TITLE
EXISTING SECTION - SHOWING DEMOLITIONS
 SECTION EE - 1
 CENTRE POINT HOUSE

DRAWN	DMcC	JOB #	552	DRG #	19266-CPA	REV	PL1
CHECKED	GM	SCALE@A1	1:100	SIZE	A1	DATE	APR 13
						REV/DATE	01.04.13

NOTES
 DO NOT SCALE FROM THIS DRAWING.
 CONTRACTOR TO CHECK ALL DIMENSIONS ON SITE.
 ANY DISCREPANCIES TO BE REPORTED TO THE ARCHITECT IMMEDIATELY.
 THE SURVEY INFORMATION CONTAINED IN THIS DRAWING WAS PROVIDED BY PLOWMAN CRAVEN SURVEY DRAWINGS DEC 2011 - OCT 2012.
 COPYRIGHT RICK MATHER ARCHITECTS LLP ©

NOTE: Existing granolithic tarmac topping to be scabbled off in both basement levels



- +56.100m CPH
EXISTING ROOF SSL
- 2621
- +63.478m CPH
EIGHTH FLOOR SSL
- 2693
- +60.795m CPH
SEVENTH FLOOR SSL
- 2694
- +48.111m CPH
SIXTH FLOOR SSL
- 2697
- +45.424m CPH
FIFTH FLOOR SSL
- 2674
- +42.750m CPH
FOURTH FLOOR SSL
- 2640
- +40.110m CPH
THIRD FLOOR SSL
- 2426
- +37.684m CPH
SECOND FLOOR SSL
- 3050
- +34.634m CPH
FIRST FLOOR
MEZZANINE SSL
- 3074
- +31.580m CPH
FIRST FLOOR SSL
- 2995
- +28.565m CPH
MEZZANINE FLOOR SSL
- 3390
- +25.175m CPH
GRADING FLOOR SSL
- 3555
- +21.630m
BASEMENT SSL
(potentially varies)
- 2930
- +18.690m SUB
BASEMENT SSL
(potentially varies)

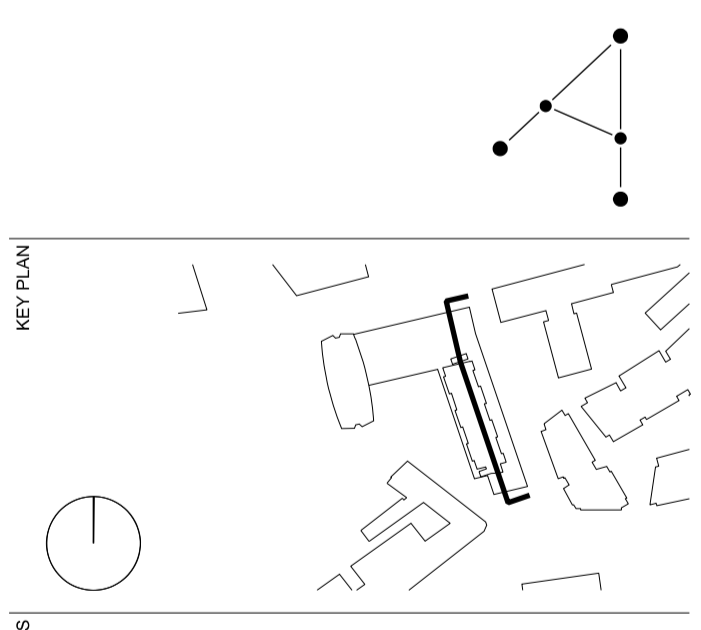
KEY

DEMOLITION	
EXISTING STRUCTURE	
PARTITION	
PROPOSED STRUCTURE	

- All suspended ceilings removed
- Stair core glazing and frames removed
- Proposed lift shaft
- First floor mezzanine slab removed
- Excavation for car lift pits
- Ground floor mezzanine slab removed
- Raised floor removed
- Substation retained beyond

REVISIONS

REV	DATE	DESCRIPTION
PL1	01.04.13	PLANNING ISSUE



STATUS
DRAFT

RICK MATHER ARCHITECTS ©
 123 Camden High Street London NW1 7JR
 T: 020 7284 1727 F: 020 7287 7626
 info@rickmather.com www.rickmather.com

JOB
Centre Point
 101-103 New Oxford Street
 London, WC1A 1DD

TITLE
EXISTING SECTION - SHOWING DEMOLITIONS
 SECTION EE - 2
 CENTRE POINT HOUSE

DRAWN	DMcC	JOB #	552	DRG #	19267-CPA	REV	PL1
CHECKED	GM	SCALE@A1	1:100	SIZE	A1	DATE	APR 13
						REV/DATE	01.04.13

CRACK

NOTES
 DO NOT SCALE FROM THIS DRAWING.
 CONTRACTOR TO CHECK ALL DIMENSIONS ON SITE.
 ANY DISCREPANCIES TO BE REPORTED TO THE ARCHITECT IMMEDIATELY.
 THE SURVEY INFORMATION CONTAINED IN THIS DRAWING WAS PROVIDED BY PLOWMAN CRAVEN SURVEY DRAWINGS DEC 2011 - OCT 2012.
 COPYRIGHT RICK MATHER ARCHITECTS LLP ©

AREA KEY

RESIDENTIAL	[Light Blue]
RETAIL	[Yellow]
PLANT	[Light Green]
CIRCULATION	[Light Grey]
CAR PARK	[Light Blue]
BACK OF HOUSE	[Dark Grey]
OFFICE	[Brown]
RESIDENTIAL AMENITY	[Purple]

KEY

DEMOLITION	[Hatched]
EXISTING STRUCTURE	[Black]
PARTITION	[Dark Grey]
PROPOSED STRUCTURE	[Hatched]

NOTE: Existing granolithic tarmac topping to be scabbled off in both basement levels

All internal partitions removed

Redundant spiral car ramp removed

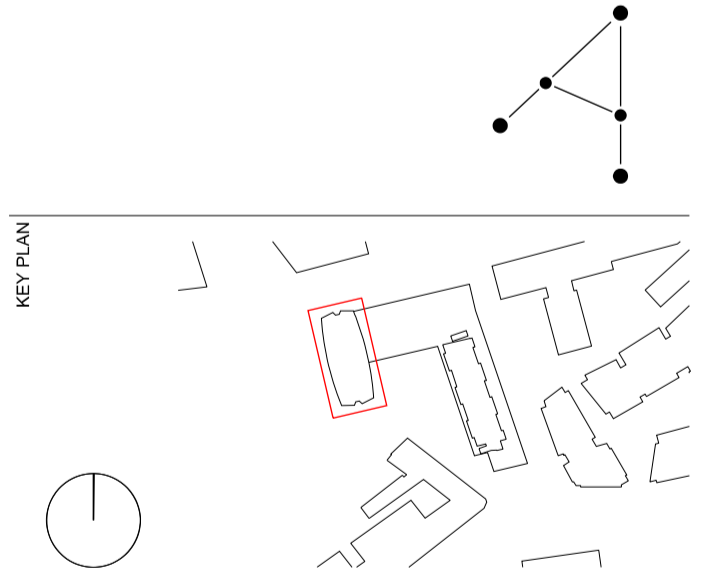
Concrete curved wall to spiral ramp removed

Retrofitted lift shaft removed

Fence enclosure and concrete plinth removed

REVISIONS

PL1	01.04.13	PLANNING ISSUE
REV	DATE	DESCRIPTION



STATUS **PLANNING**

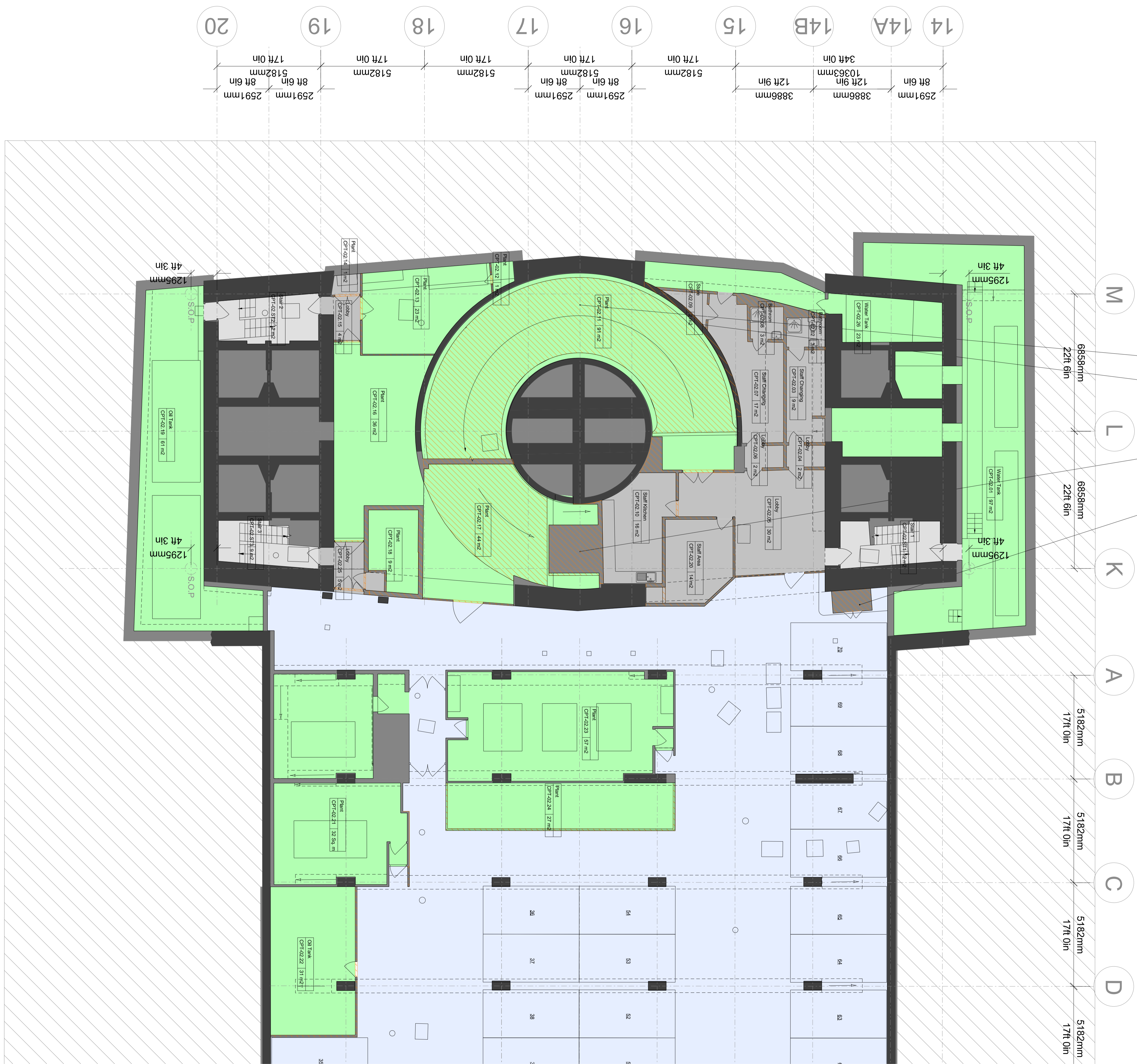
RICK MATHER ARCHITECTS ©

123 Camden High Street London NW1 7JR
 T: 020 7284 1727 F: 020 7287 7626
 info@rickmather.com www.rickmather.com

JOB **Centre Point**
 101-103 New Oxford Street
 London, WC1A 1DD

TITLE **EXISTING FLOOR PLAN**
 SUB-BASEMENT
 CENTRE POINT TOWER

DRAWN	DMcC	JOB #	552	DWG #	19300-CPT	REV	PL1
CHECKED	GM	SCALE@A1	1:100	SIZE	A1	DATE	APR 13
						REV/DATE	01.04.13



NOTES
 DO NOT SCALE FROM THIS DRAWING.
 CONTRACTOR TO CHECK ALL DIMENSIONS ON SITE.
 ANY DISCREPANCIES TO BE REPORTED TO THE ARCHITECT IMMEDIATELY.
 THE SURVEY INFORMATION CONTAINED IN THIS DRAWING WAS PROVIDED BY PLOWMAN CRAVEN SURVEY DRAWINGS DEC 2011 - OCT 2012.
 COPYRIGHT RICK MATHER ARCHITECTS LLP ©

AREA KEY

RESIDENTIAL	Light Blue
RETAIL	Yellow
PLANT	Light Green
CIRCULATION	Light Grey
CAR PARK	Blue
BACK OF HOUSE	Dark Grey
OFFICE	Brown
RESIDENTIAL AMENITY	Purple

KEY

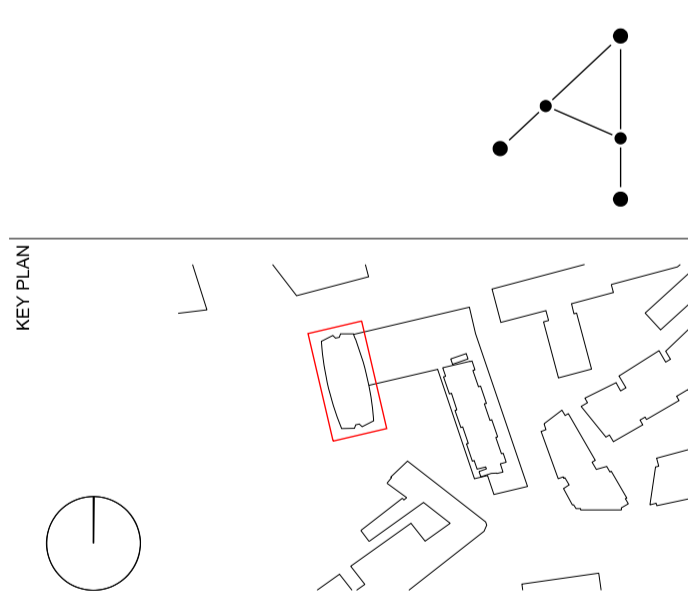
DEMOLITION	Orange Hatched
EXISTING STRUCTURE	Black
PARTITION	Dark Grey
PROPOSED STRUCTURE	White with Dotted

NOTE: Existing granolithic tarmac topping to be scabbled off in both basement levels

- All internal partitions removed
- Concrete curved wall to spiral ramp removed
- Redundant spiral car ramp removed
- Retrofitted lift shaft removed
- Slab removed for new lifts

REVISIONS

REV	DATE	DESCRIPTION
PL1	01.04.13	PLANNING ISSUE



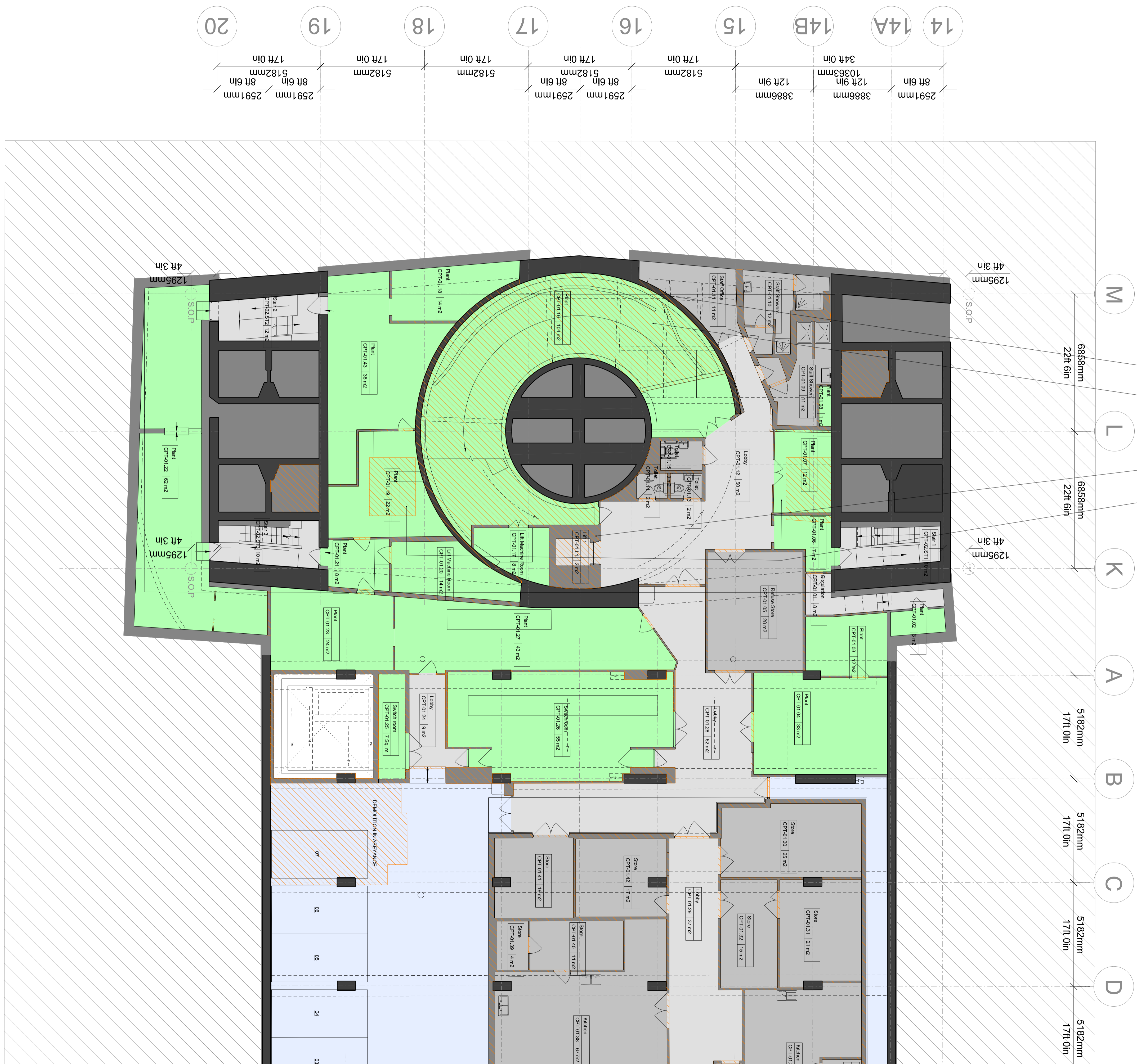
STATUS **PLANNING**

RICK MATHER ARCHITECTS ©
 123 Camden High Street London NW1 7JR
 T: 020 7284 1727 F: 020 7281 7626
 info@rickmather.com www.rickmather.com

JOB **Centre Point**
 101-103 New Oxford Street
 London, WC1A 1DD

TITLE **EXISTING FLOOR PLAN**
 BASEMENT
 CENTRE POINT TOWER

DRAWN	DMcC	JOB #	552	DRG #	19301-CPT	REV	PL1
CHECKED	GM	SCALE@A1	1:100	SIZE	A1	DATE	APR 13
						REV DATE	01.04.13



14	2591mm	8ft 6in
14A	3886mm	12ft 9in
14B	3886mm	12ft 9in
15	5182mm	17ft 0in
16	2591mm	8ft 6in
17	5182mm	17ft 0in
18	5182mm	17ft 0in
19	2591mm	8ft 6in
20	2591mm	8ft 6in

NOTES
 DO NOT SCALE FROM THIS DRAWING.
 CONTRACTOR TO CHECK ALL DIMENSIONS ON SITE.
 ANY DISCREPANCIES TO BE REPORTED TO THE ARCHITECT IMMEDIATELY.
 THE SURVEY INFORMATION CONTAINED IN THIS DRAWING WAS PROVIDED BY PLOWMAN CRAVEN SURVEY DRAWINGS DEC 2011 - OCT 2012.
 COPYRIGHT RICK MATHER ARCHITECTS LLP ©

AREA KEY

RESIDENTIAL	[Light Blue]
RETAIL	[Yellow]
PLANT	[Light Green]
CIRCULATION	[Light Grey]
CAR PARK	[Light Blue]
BACK OF HOUSE	[Dark Grey]
OFFICE	[Brown]
RESIDENTIAL AMENITY	[Purple]

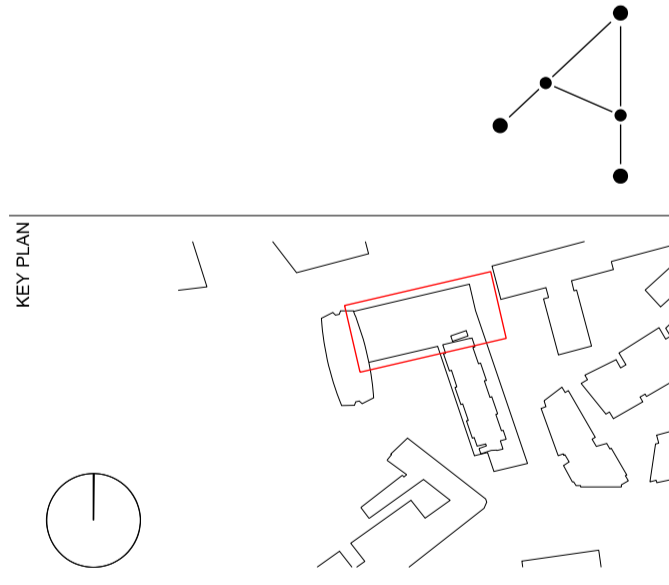
KEY

DEMOLITION	[Hatched]
EXISTING STRUCTURE	[Solid Black]
PARTITION	[Solid Grey]
PROPOSED STRUCTURE	[Hatched]

- All internal partitions removed
- Safe room doors and frame removed
- Escape stair removed
- Kerbs removed
- Lift shaft removed

REVISIONS

REV	DATE	DESCRIPTION
PL1	01.04.13	PLANNING ISSUE



STATUS **PLANNING**

RICK MATHER ARCHITECTS ©
 123 Camden High Street London NW1 7JR
 T: 020 7284 1727 F: 020 7287 7826
 info@rickmather.com www.rickmather.com

REF **Centre Point**
 101-103 New Oxford Street
 London, WC1A 1DD

TITLE **EXISTING FLOOR PLAN**
 SUB-BASEMENT
 CENTRE POINT LINK

DRAWN	DMcC	# 552	DRG # 19325-CPL	REV # PL1
CHECKED	GM	SCALE@1:100	SIZE A1	DATE APR 13
				REV/DATE 01.04.13



- 1 2591mm 8ft 6in
- 2 3886mm 12ft 9in
- 3 3886mm 12ft 9in
- 4 3886mm 12ft 9in
- 4A 7772mm 25ft 6in
- 5 7772mm 25ft 6in
- 6 3886mm 12ft 9in
- 7 3886mm 12ft 9in
- 8 7772mm 25ft 6in

- K 3mm .6in
- A 5182mm 17ft 0in
- B 5182mm 17ft 0in
- C 5182mm 17ft 0in
- D 5182mm 17ft 0in
- E 5182mm 17ft 0in
- F 5182mm 17ft 0in
- G 7772mm 25ft 6in
- H 7772mm 25ft 6in
- J 5182mm 17ft 0in