

NOTES
 DO NOT SCALE FROM THIS DRAWING.
 CONTRACTOR TO CHECK ALL DIMENSIONS ON SITE.
 ANY DISCREPANCIES TO BE REPORTED TO THE ARCHITECT IMMEDIATELY.

THE SURVEY INFORMATION CONTAINED IN THIS DRAWING WAS PROVIDED BY PLOWMAN CRAVEN SURVEY DRAWINGS DEC 2011 - OCT 2012.

COPYRIGHT RICK MATHER ARCHITECTS LLP ©

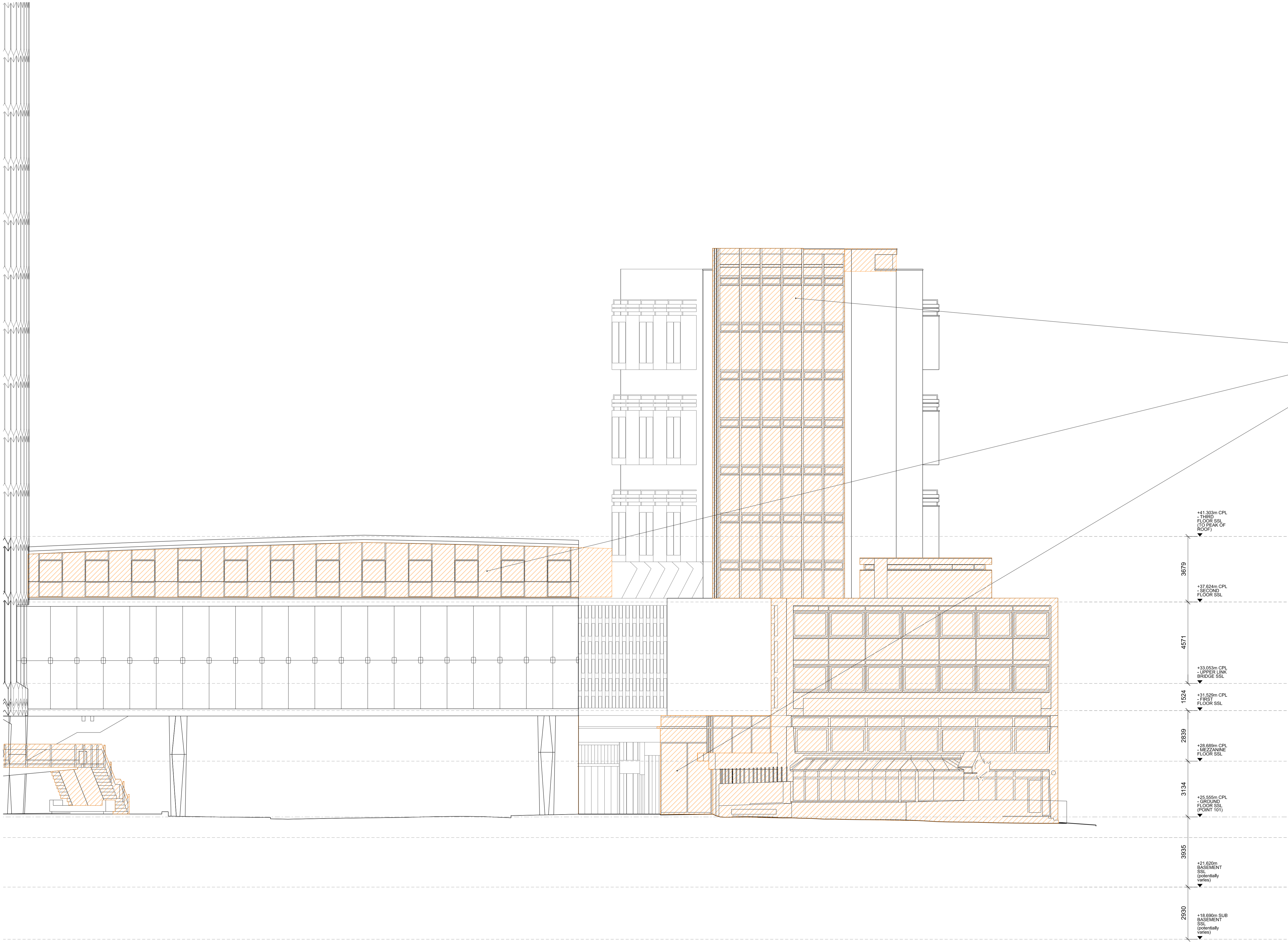
KEY

DEMOLITION	
EXISTING STRUCTURE	
PARTITION	
PROPOSED STRUCTURE	

Stair glazing and frame removed

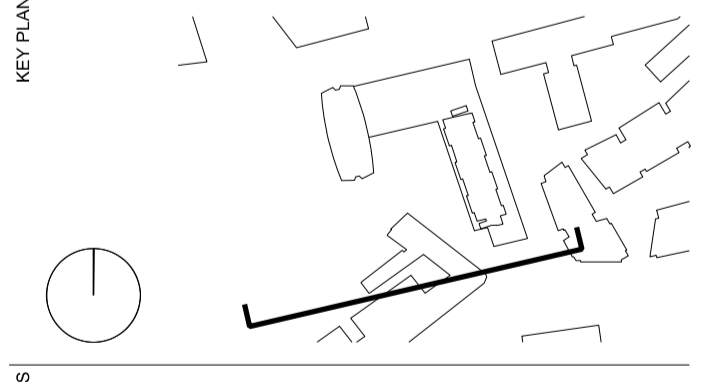
Glazed wall and spandrel removed

Shop front glazing removed



REVISIONS

REV	DATE	DESCRIPTION
PL1	01.04.13	PLANNING ISSUE



STATUS **PLANNING**

RICK MATHER ARCHITECTS ©

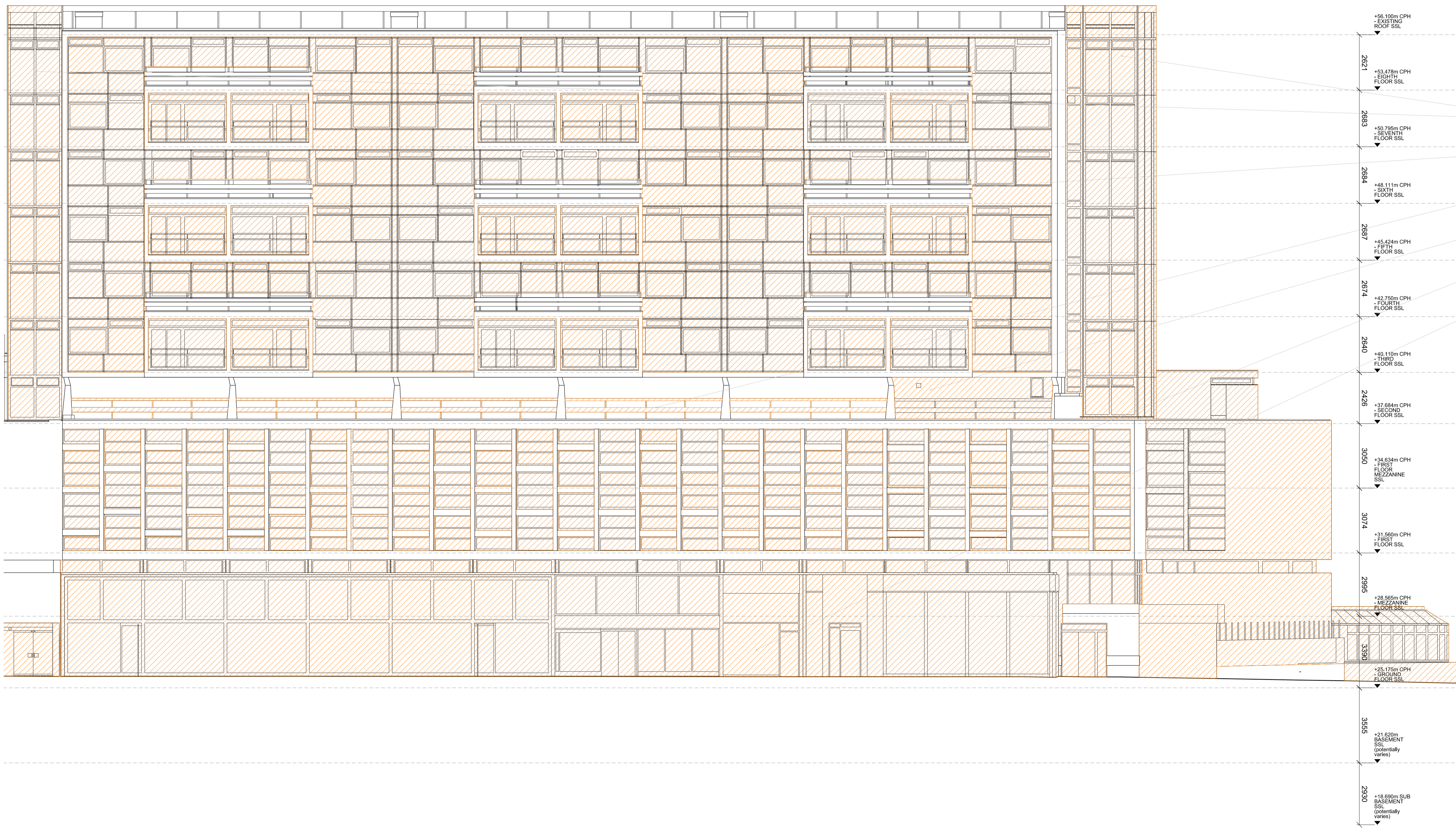
123 Camden High Street London NW1 7JR
 T: 020 7284 1727 F: 020 7287 7626
 info@rickmather.com www.rickmather.com

JOB **Centre Point**
 101-103 New Oxford Street
 London, WC1A 1DD

TITLE **EXISTING ELEVATION - SHOWING DEMOLITIONS**
 SOUTH ELEVATION
 CENTRE POINT LINK + HOUSE

DRAWN	DMcC	JOB #	552	DRG #	19258-CPA	REV	PL1
CHECKED	GM	SCALE@A1	1:100	SIZE	A1	DATE	APR 13
						REV/DATE	01.04.13

NOTES
 DO NOT SCALE FROM THIS DRAWING.
 CONTRACTOR TO CHECK ALL DIMENSIONS ON SITE.
 ANY DISCREPANCIES TO BE REPORTED TO THE ARCHITECT IMMEDIATELY.
 THE SURVEY INFORMATION CONTAINED IN THIS DRAWING WAS PROVIDED BY PLOWMAN CRAVEN SURVEY DRAWINGS DEC 2011 - OCT 2012.
 COPYRIGHT RICK MATHER ARCHITECTS LLP ©



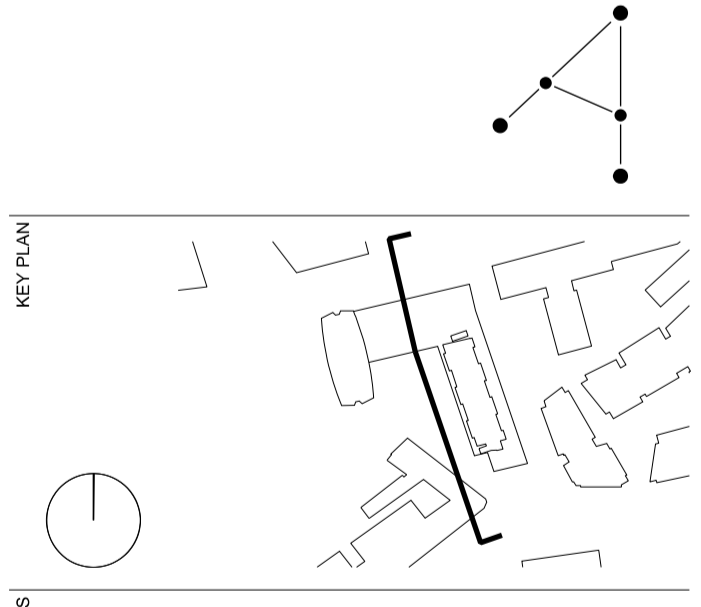
KEY

DEMOLITION	
EXISTING STRUCTURE	
PARTITION	
PROPOSED STRUCTURE	

- Stair glazing removed
- Curtain glazing removed
- Balustrade removed
- Retrofitted plant room removed
- Glazing and spandrel panels behind brise soleil removed
- Shop front glazing removed

REVISIONS

REV	DATE	DESCRIPTION
PL1	01.04.13	PLANNING ISSUE



STATUTORY
PLANNING

RICK MATHER ARCHITECTS ©

123 Camden High Street London NW1 7JR
 T: 020 7284 1727 F: 020 7287 7626
 info@rickmather.com www.rickmather.com

Centre Point
 101-103 New Oxford Street
 London, WC1A 1DD

TITLE
 EXISTING ELEVATION - SHOWING DEMOLITIONS
 WEST ELEVATION - 1
 CENTRE POINT HOUSE

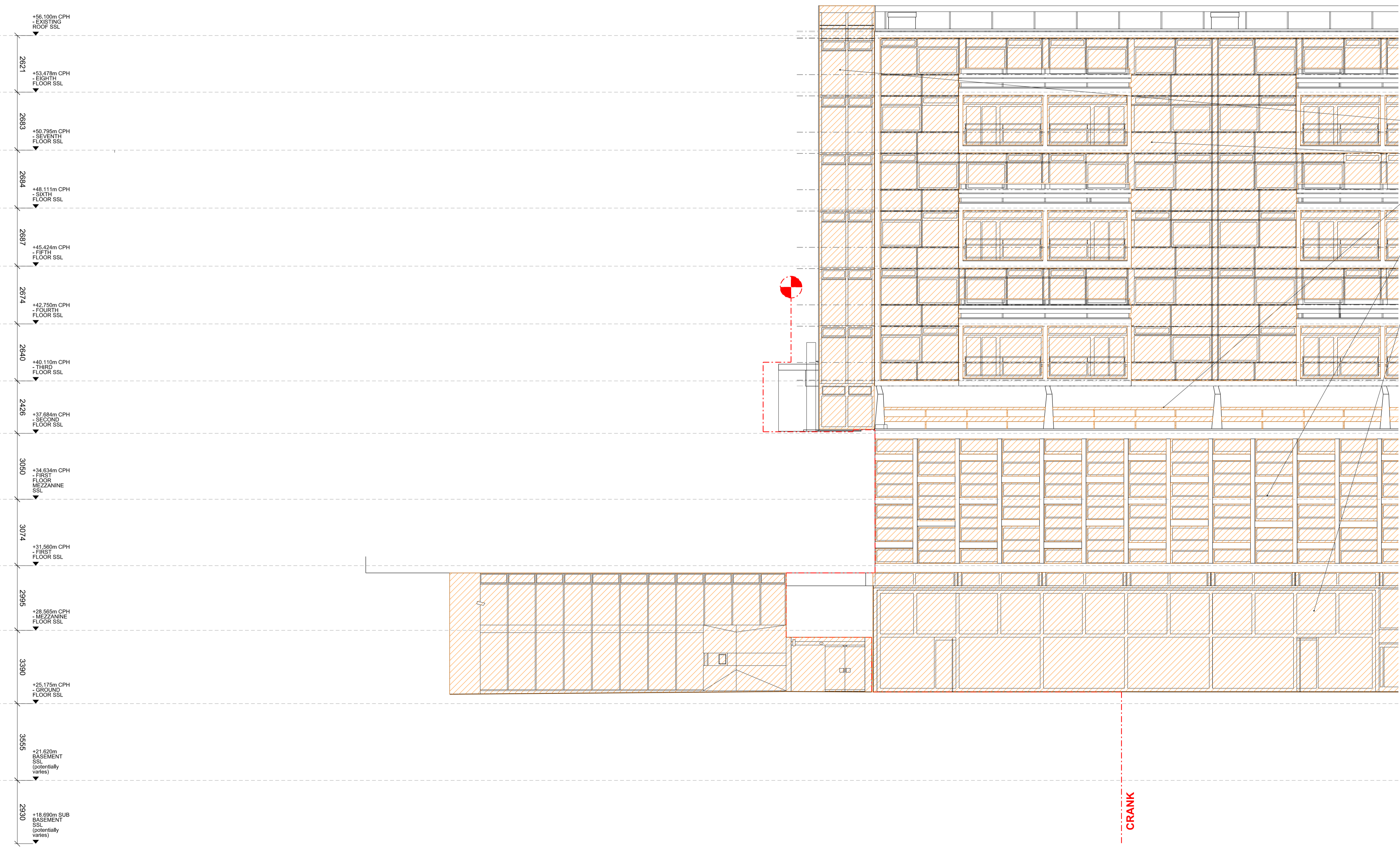
DRAWN	JOB #	DRG #	REV
DMcC	552	19259-CPA	PL1

CHECKED	SCALE@A1	SIZE	DATE	REV/DATE
GM	1:100	A1	APR 13	01.04.13

NOTES
 DO NOT SCALE FROM THIS DRAWING.
 CONTRACTOR TO CHECK ALL DIMENSIONS ON SITE.
 ANY DISCREPANCIES TO BE REPORTED TO THE ARCHITECT IMMEDIATELY.

THE SURVEY INFORMATION CONTAINED IN THIS DRAWING WAS PROVIDED BY PLOWMAN CRAVEN SURVEY DRAWINGS DEC 2011 - OCT 2012.

COPYRIGHT RICK MATHER ARCHITECTS LLP ©



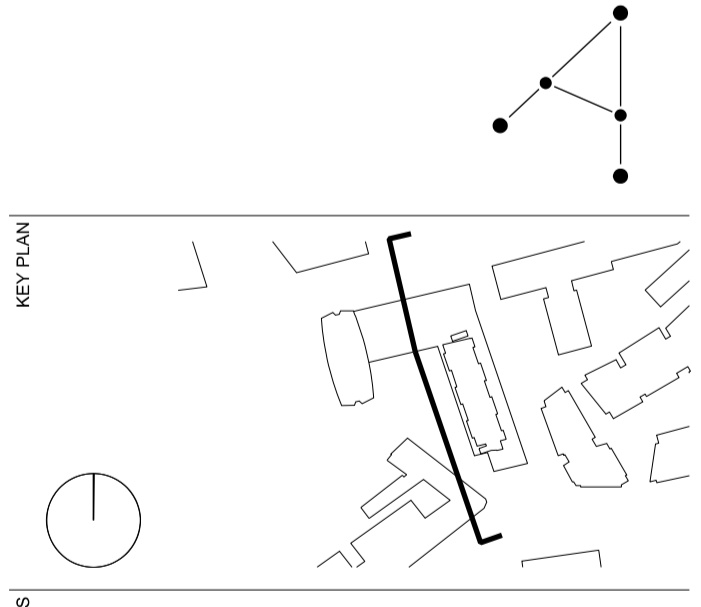
KEY

DEMOLITION	
EXISTING STRUCTURE	
PARTITION	
PROPOSED STRUCTURE	

- Stair glazing removed
- Curtain glazing removed
- Balustrade removed
- Glazing and spandrel panels behind brise soleil removed
- Shop front glazing removed

REVISIONS

REV	DATE	DESCRIPTION
PL1	01.04.13	PLANNING ISSUE



STATUS **PLANNING**

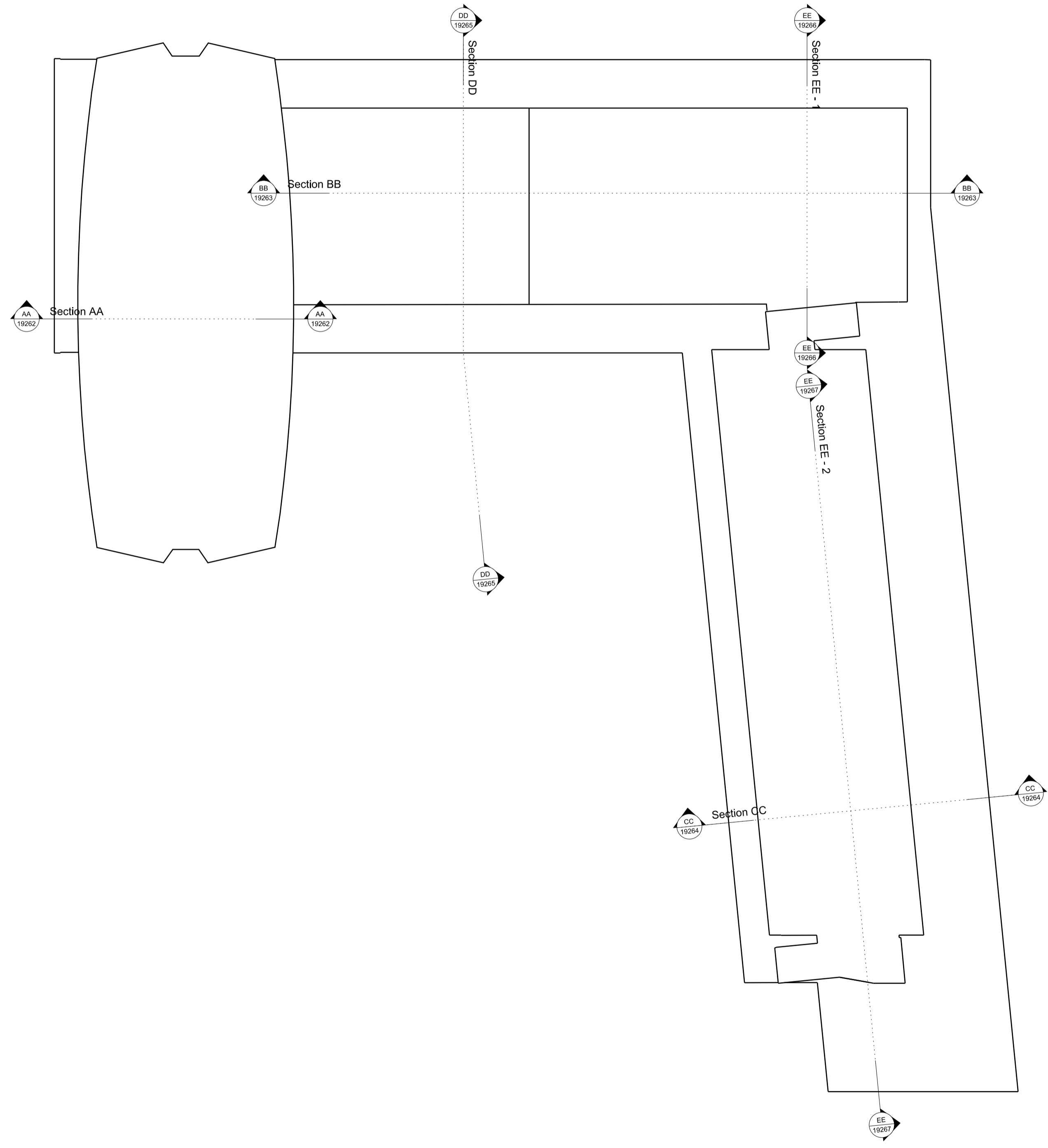
RICK MATHER ARCHITECTS ©

123 Camden High Street London NW1 7JR
 T: 020 7284 1727 F: 020 7287 7826
 info@rickmather.com www.rickmather.com

JOB **Centre Point**
 101-103 New Oxford Street
 London, WC1A 1DD

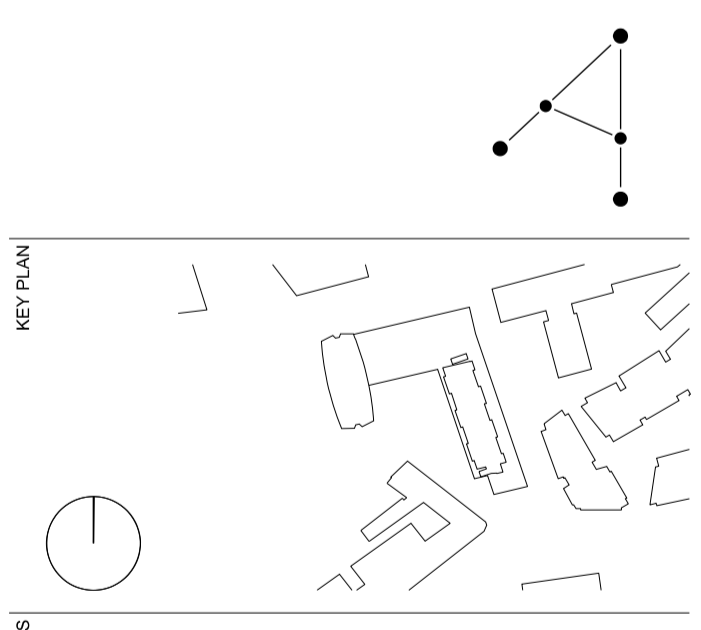
TITLE **EXISTING ELEVATION - SHOWING DEMOLITIONS**
 WEST ELEVATION - 2
 CENTRE POINT HOUSE

DRAWN	DMcC	JOB #	552	DRG #	19260-CPA	REV	PL1
CHECKED	GM	SCALE@A1	1:100	SIZE	A1	DATE	APR 13
						REV/DATE	01.04.13



REVISIONS

REV	DATE	DESCRIPTION
PL1	01.04.13	PLANNING ISSUE



PLANNING

RICK MATHER ARCHITECTS ©
 123 Camden High Street London NW1 7JR
 T: 020 7284 1727 F: 020 7287 7826
 info@rickmather.com www.rickmather.com

Centre Point
 101-103 New Oxford Street
 London, WC1A 1DD

SECTION KEY PLAN FOR DEMOLITION DRAWINGS
 1:100 SET - EXISTING
 AMALGAMATED DRAWINGS

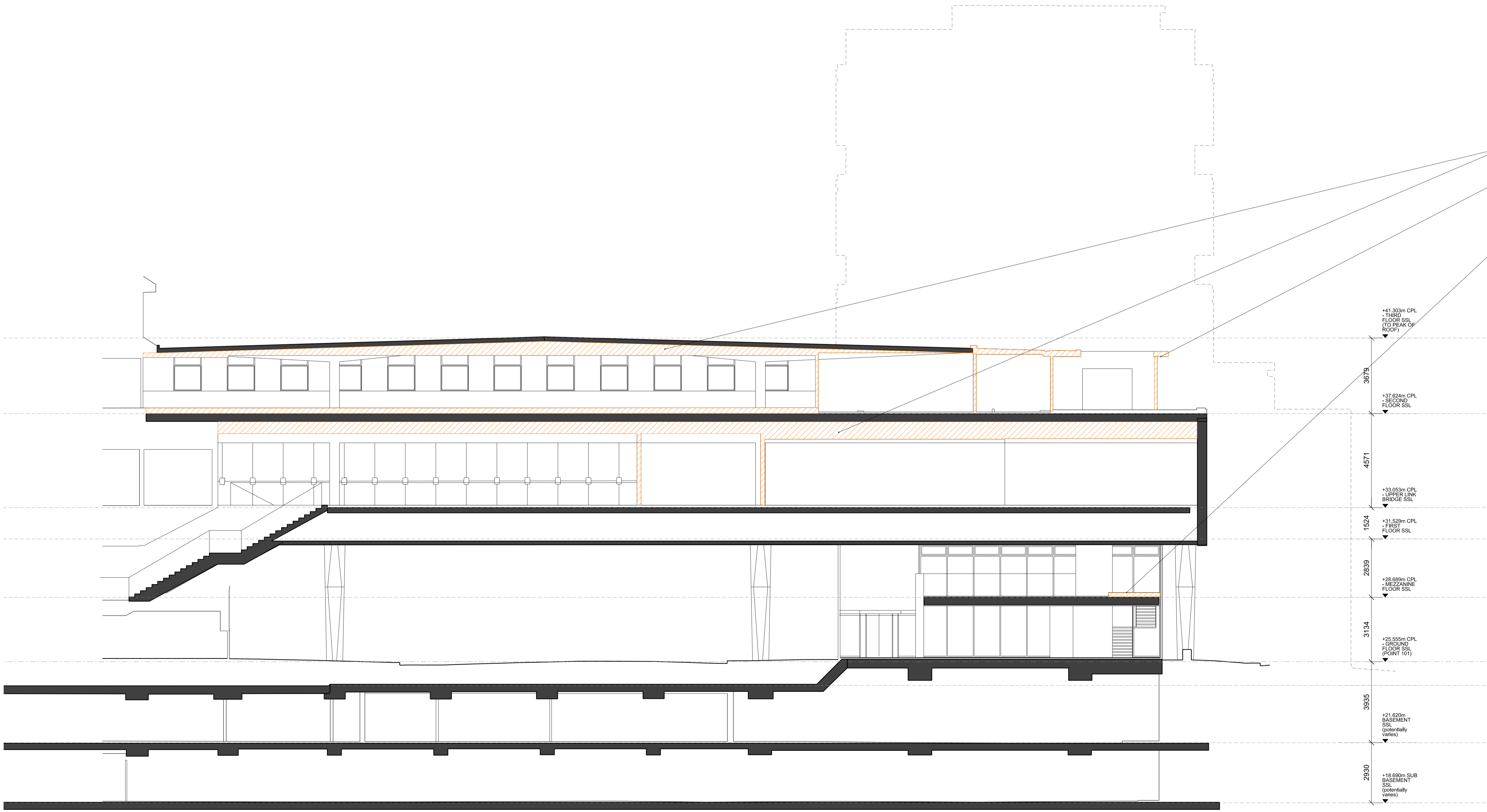
DRAWN	DMcC	JOB #	552	DRG #	19261-CPA	REV	PL1
CHECKED	GM	SCALE@A1	1:250	SIZE	A1	DATE	APR 13
						REV/DATE	01.04.13

NOTES
 DO NOT SCALE FROM THIS DRAWING.
 CONTRACTOR TO CHECK ALL DIMENSIONS ON SITE.
 ANY DISCREPANCIES TO BE REPORTED TO THE ARCHITECT IMMEDIATELY.
 THE SURVEY INFORMATION CONTAINED IN THIS DRAWING WAS PROVIDED BY PLOWMAN CRAVEN SURVEY DRAWINGS DEC 2011 - OCT 2012.
 COPYRIGHT RICK MATHER ARCHITECTS LLP ©

NOTE: Existing granolithic tarmac topping to be scabbled off in both basement levels

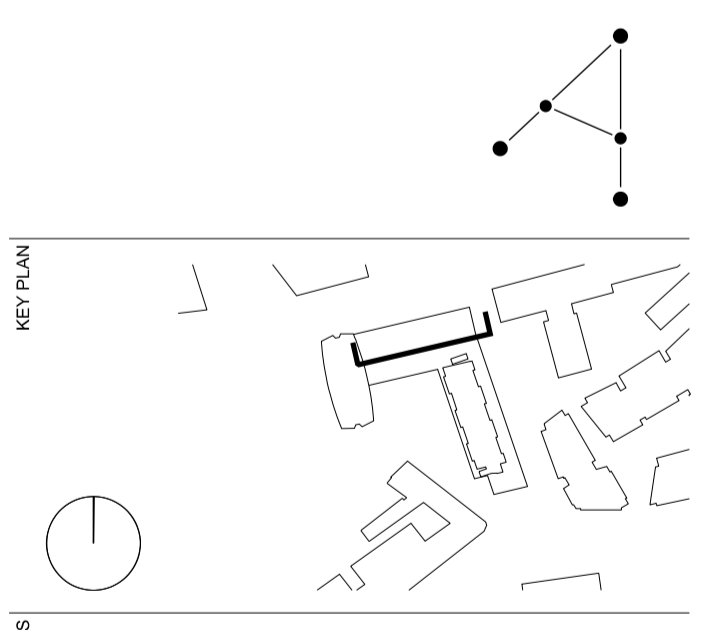
KEY	
DEMOLITION	
EXISTING STRUCTURE	
PARTITION	
PROPOSED STRUCTURE	

- All internal partitions removed
- Suspended ceilings removed
- Louvre wall to plant room enclosure removed
- Raised floor removed



- +41.303m CPL - THIRD FLOOR SSL (TO PEAK OF ROOF)
- +37.624m CPL - SECOND FLOOR SSL
- +33.053m CPL - UPPER LINK BRIDGE SSL
- +31.529m CPL - FIRST FLOOR SSL
- +28.689m CPL - MEZZANINE FLOOR SSL
- +25.555m CPL - GROUND FLOOR SSL (POINT 101)
- +21.820m BASEMENT SSL (potentially varies)
- +18.690m SUB BASEMENT SSL (potentially varies)

REVISIONS			
PL1	01.04.13	PLANNING ISSUE	
REV	DATE	DESCRIPTION	



STATUS
PLANNING

RICK MATHER ARCHITECTS ©
 123 Camden High Street London NW1 7JR
 T: 020 7284 1727 F: 020 7287 7626
 info@rickmather.com www.rickmather.com

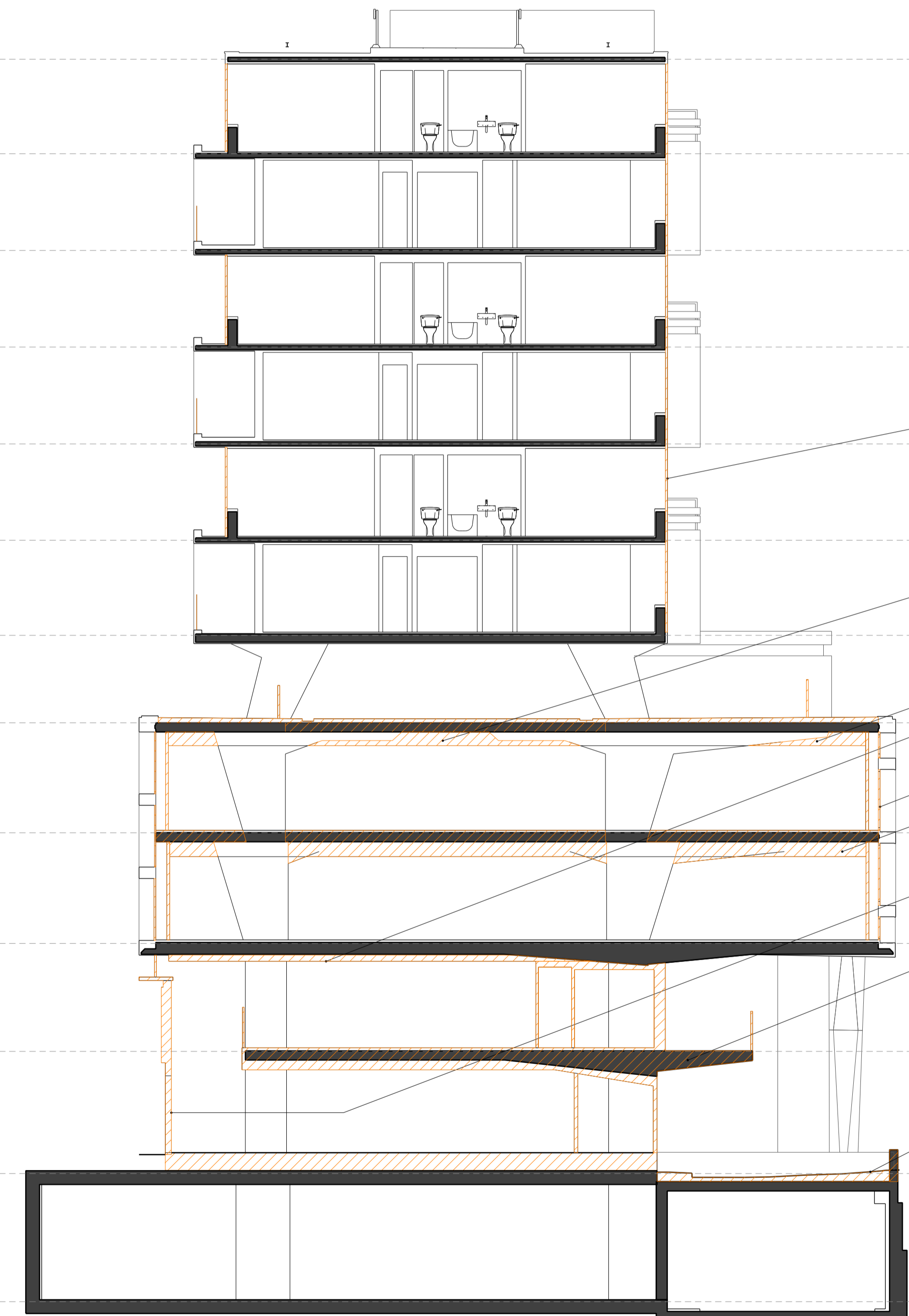
JOB
Centre Point
 101-103 New Oxford Street
 London, WC1A 1DD

TITLE
EXISTING SECTION - SHOWING DEMOLITIONS
 SECTION BB
 CENTRE POINT LINK

DRAWN	DMcC	JOB #	552	DRG #	19263-CPA	REV	PL1
CHECKED	GM	SCALE@A1	1:100	SIZE	A1	DATE	APR 13
						REV/DATE	01.04.13

NOTES
 DO NOT SCALE FROM THIS DRAWING.
 CONTRACTOR TO CHECK ALL DIMENSIONS ON SITE.
 ANY DISCREPANCIES TO BE REPORTED TO THE ARCHITECT IMMEDIATELY.
 THE SURVEY INFORMATION CONTAINED IN THIS DRAWING WAS PROVIDED BY PLOWMAN CRAVEN SURVEY DRAWINGS DEC 2011 - OCT 2012.
 COPYRIGHT RICK MATHER ARCHITECTS LLP ©

NOTE: Existing granolithic tarmac topping to be scabbled off in both basement levels



+56.100m CPH
- EXISTING ROOF SSL
2621
+53.478m CPH
- EIGHTH FLOOR SSL
2683
+50.795m CPH
- SEVENTH FLOOR SSL
2684
+48.111m CPH
- SIXTH FLOOR SSL
2687
+45.424m CPH
- FIFTH FLOOR SSL
2674
+42.750m CPH
- FOURTH FLOOR SSL
2640
+40.110m CPH
- THIRD FLOOR SSL
2428
+37.684m CPH
- SECOND FLOOR SSL
3050
+34.634m CPH
- FIRST FLOOR MEZZANINE SSL
3074
+31.560m CPH
- FIRST FLOOR SSL
2995
+28.565m CPH
- MEZZANINE FLOOR SSL
3390
+25.175m CPH
- GROUND FLOOR SSL
3555
+21.620m BASEMENT SSL (potentially varies)
2930
+18.690m SUB BASEMENT SSL (potentially varies)

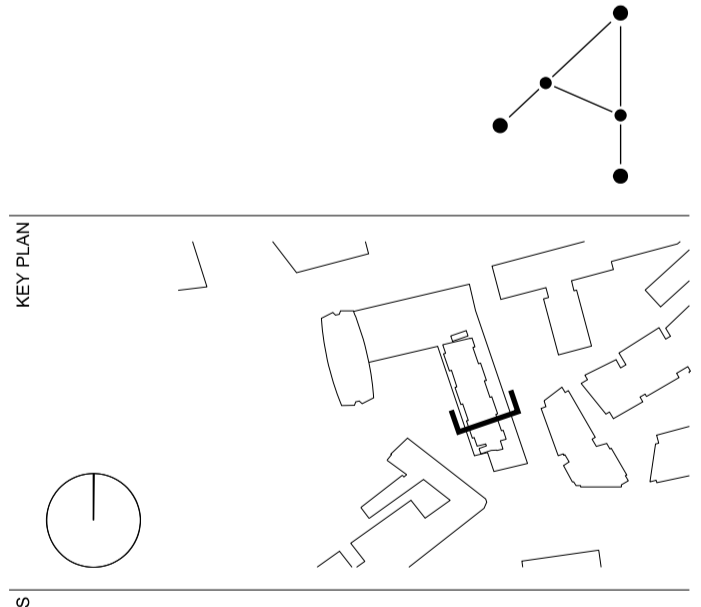
KEY

DEMOLITION	
EXISTING STRUCTURE	
PARTITION	
PROPOSED STRUCTURE	

- Curtain glazing removed
- Holes cut in second floor slab to create clerestory
- Suspended ceilings removed
- Glazing behind brise soleil and retrofitted secondary glazing removed
- First mezzanine removed
- Shop front glazing removed
- Ground mezzanine slab removed
- Car ramp to basement removed

REVISIONS

REV	DATE	DESCRIPTION
PL1	01.04.13	PLANNING ISSUE



STATUS
PLANNING

RICK MATHER ARCHITECTS ©
 123 Camden High Street London NW1 7JR
 T: 020 7284 1727 F: 020 7287 7626
 info@rickmather.com www.rickmather.com

JOB
Centre Point
 101-103 New Oxford Street
 London, WC1A 1DD

TITLE
EXISTING SECTION - SHOWING DEMOLITIONS
 SECTION CC
 CENTRE POINT HOUSE

DRAWN	DMcC	JOB #	552	DRG #	19264-CPA	REV	PL1
CHECKED	GM	SCALE@A1	1:100	SIZE	A1	DATE	APR 13
						REV/DATE	01.04.13