



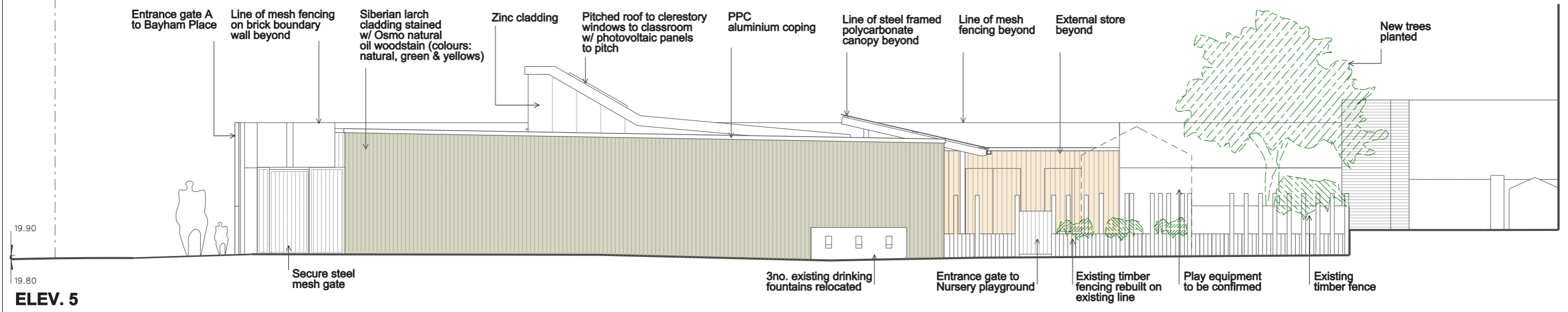


MATERIAL KEY	
	Brick wall
	Timber cladding
	Naturally stained timber cladding
	Siberian larch cladding stained w/ Osmo natural oil woodstain (colours: natural, green & yellows)



Rev.	Date	By	Description
			Roof plan drg number was changed to 318_P107 on 28.07.14
A	07.06.15	GL	NON-MATERIAL AMENDMENTS: aluminium sheet cladding to skylight unit replaced by zinc cladding

Do not scale from this drawing All dimensions to be checked on site  
 Notify the Architect immediately of any discrepancies  
 This drawing remains the copyright of the Architect

**AAB architects**  
 10 Stock Orchard Street London N7 9RW  
 Tel 020 7700 6265 Fax 020 7700 6365 mail@aabarchitects.co.uk

**RICHARD COBDEN PRIMARY SCHOOL, NURSERY**  
 DRAWING : PROPOSED ELEVATION 5  
 SCALE : 1:50 at A1, 1:100 at A3  
 DATE : 28.07.14

JOB NO.	LEVEL	SERIES	NO.	REV
<b>318</b>		<b>P</b>	<b>106</b>	<b>A</b>