



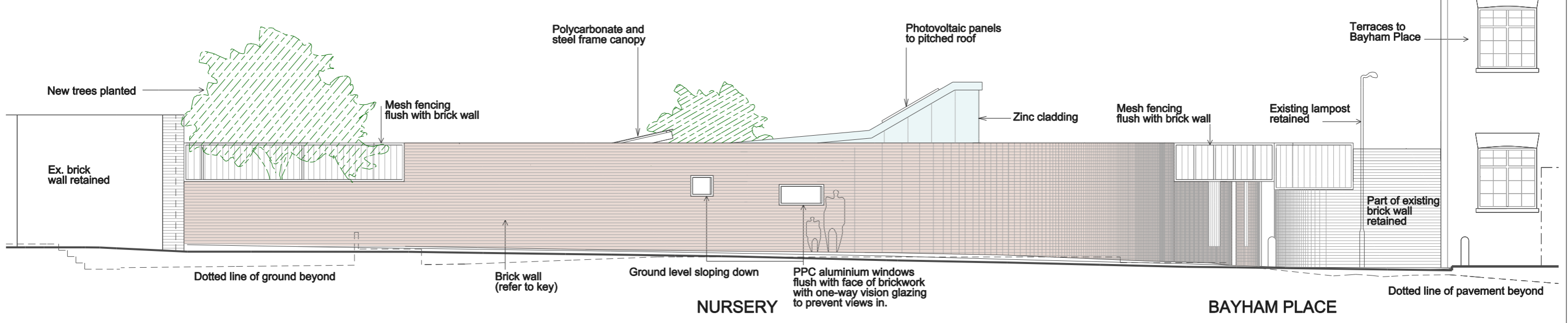
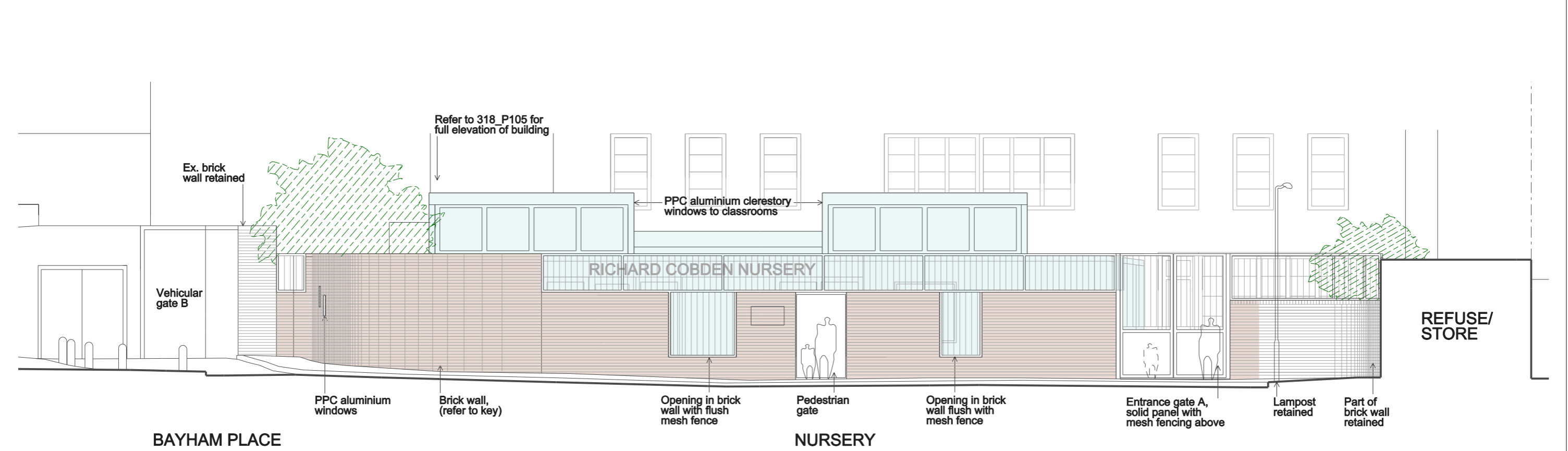


**MATERIAL KEY**

	Steel mesh, black, to match existing		New areas of brick wall, to be Terca by Wienerberger, mix of Pagus Red and Pagus Brown/ Black (70:30) or similar to be approved. Flemish bond
	Brick wall		New building



**ELEV. 1**



**ELEV. 2**

Refer to drg 318\_P204 for 1:200 Elevations 1 & 2

Rev.	Date	By	Description
A	28.05.14		Elevation 2 amended
B	29.05.14		Mesh fencing adjusted & notes added
C	14.07.14		Roof profile, glazing & classroom skylights amended
D	01.08.14		PLANNING
E	28.10.14		windows added to north elevation
F	07.09.15		NON-MATERIAL AMENDMENTS: aluminium sheet cladding for skylight unit replaced by zinc cladding

Do not scale from this drawing All dimensions to be checked on site  
 Notify the Architect immediately of any discrepancies  
 This drawing remains the copyright of the Architect  
**AAB architects**  
 10 Stock Orchard Street London N7 9RW  
 Tel 020 7700 6265 Fax 020 7700 6365 mail@aabarchitects.co.uk

**RICHARD COBDEN PRIMARY SCHOOL, NURSERY**  
 DRAWING : PROPOSED EXTERNAL ELEVATIONS 1 & 2  
 SCALE : 1:50 at A1, 1:100 at A3  
 DATE : 19.05.14

JOB NO.	LEVEL	SERIES	NO.	REV.
<b>318</b>		<b>P</b>	<b>104</b>	<b>F</b>