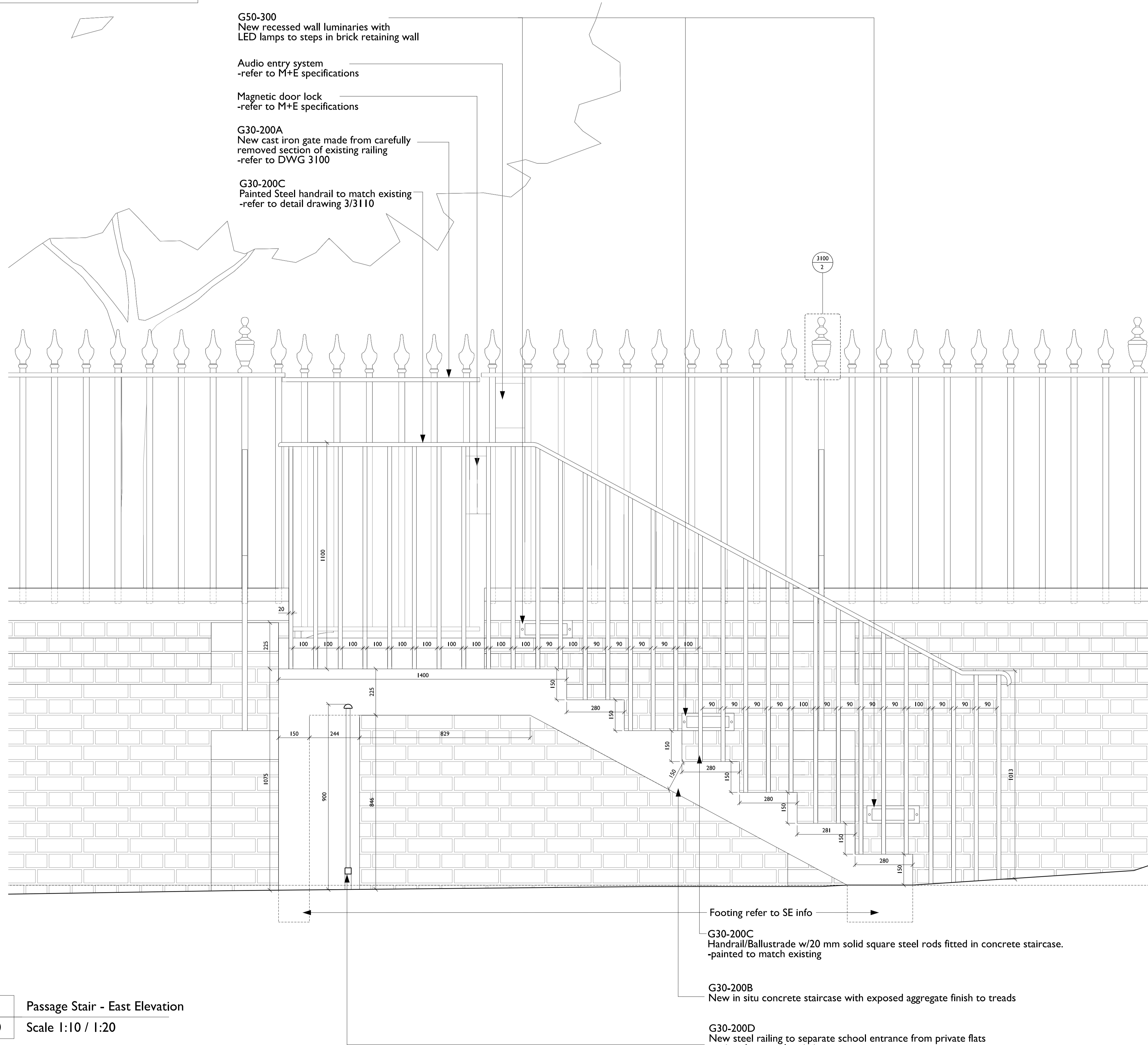


General note: For Gate + Steps to Christchurch passage see specifications clause G30-200. To be read in conjunction with SE drawings + specifications.



G50-300
New recessed wall luminaires with LED lamps to steps in brick retaining wall

Audio entry system
-refer to M+E specifications

Magnetic door lock
-refer to M+E specifications

G30-200A
New cast iron gate made from carefully removed section of existing railing
-refer to DWG 3100

G30-200C
Painted Steel handrail to match existing
-refer to detail drawing 3/3110

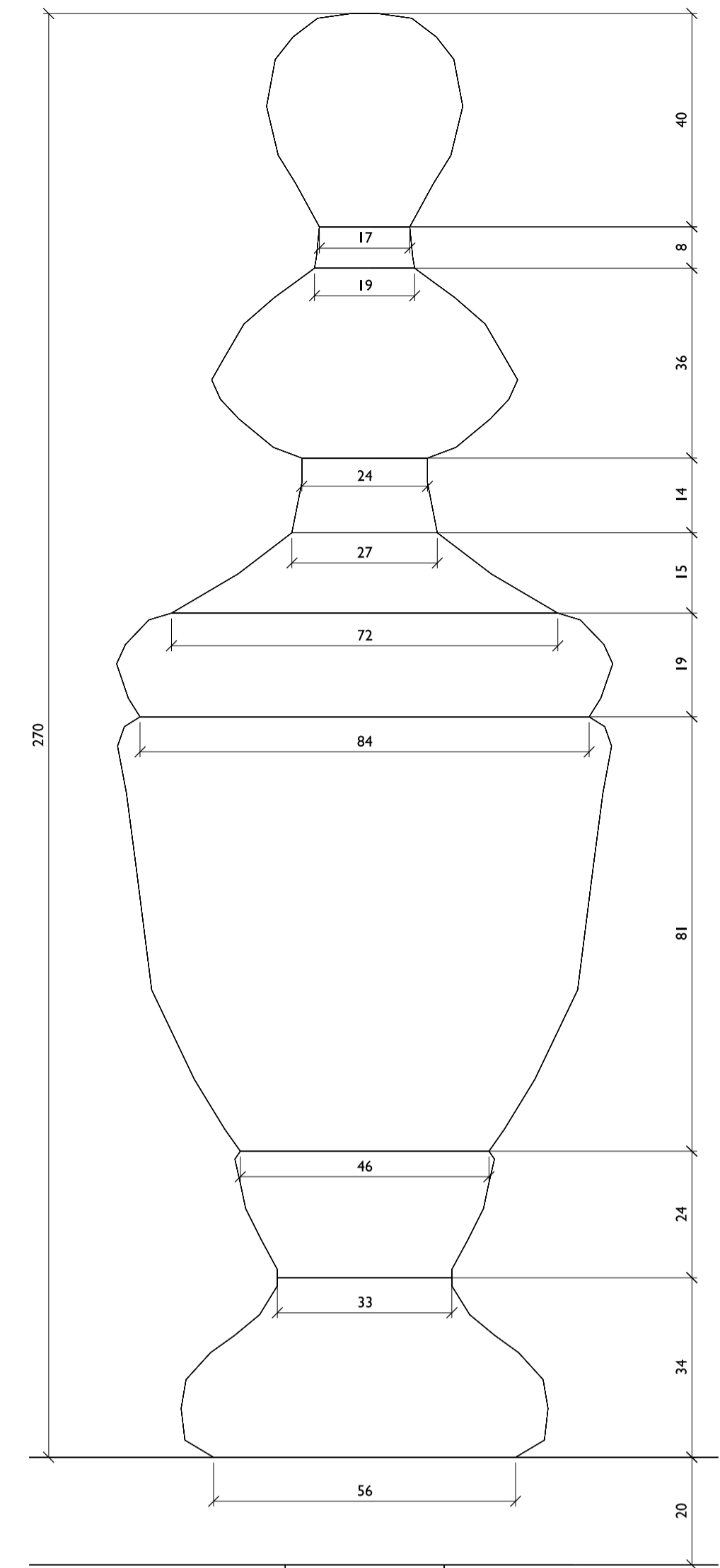
Footing refer to SE info

G30-200C
Handrail/Ballustrade w/20 mm solid square steel rods fitted in concrete staircase.
-painted to match existing

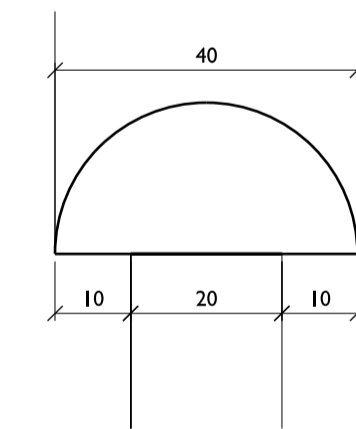
G30-200B
New in situ concrete staircase with exposed aggregate finish to treads

G30-200D
New steel railing to separate school entrance from private flats
- painted to match existing

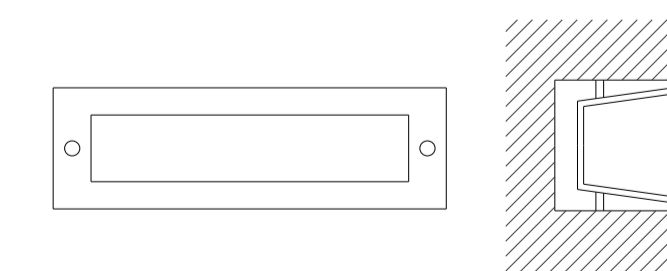
I Passage Stair - East Elevation
3110 Scale 1:10 / 1:20



2 Railing finial detail
3110 Scale 1:1 / 1:2



3 Handrailing detail
3110 Scale 1:1 / 1:2



G50-300
Recessed wall luminaires with LED lamps in back of brick piers

4 Recessed wall luminaires detail
3110 Scale 1:5 / 1:10

