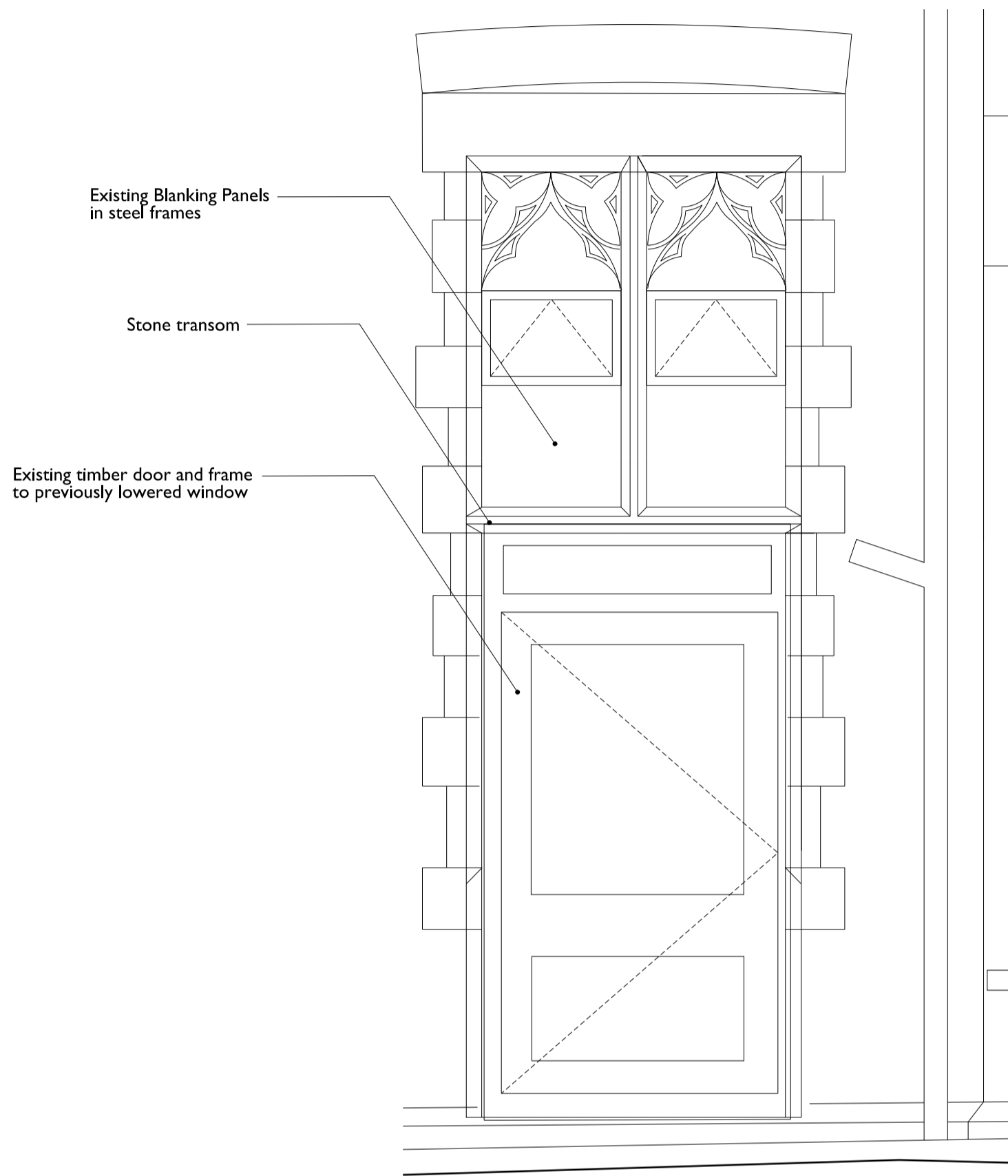
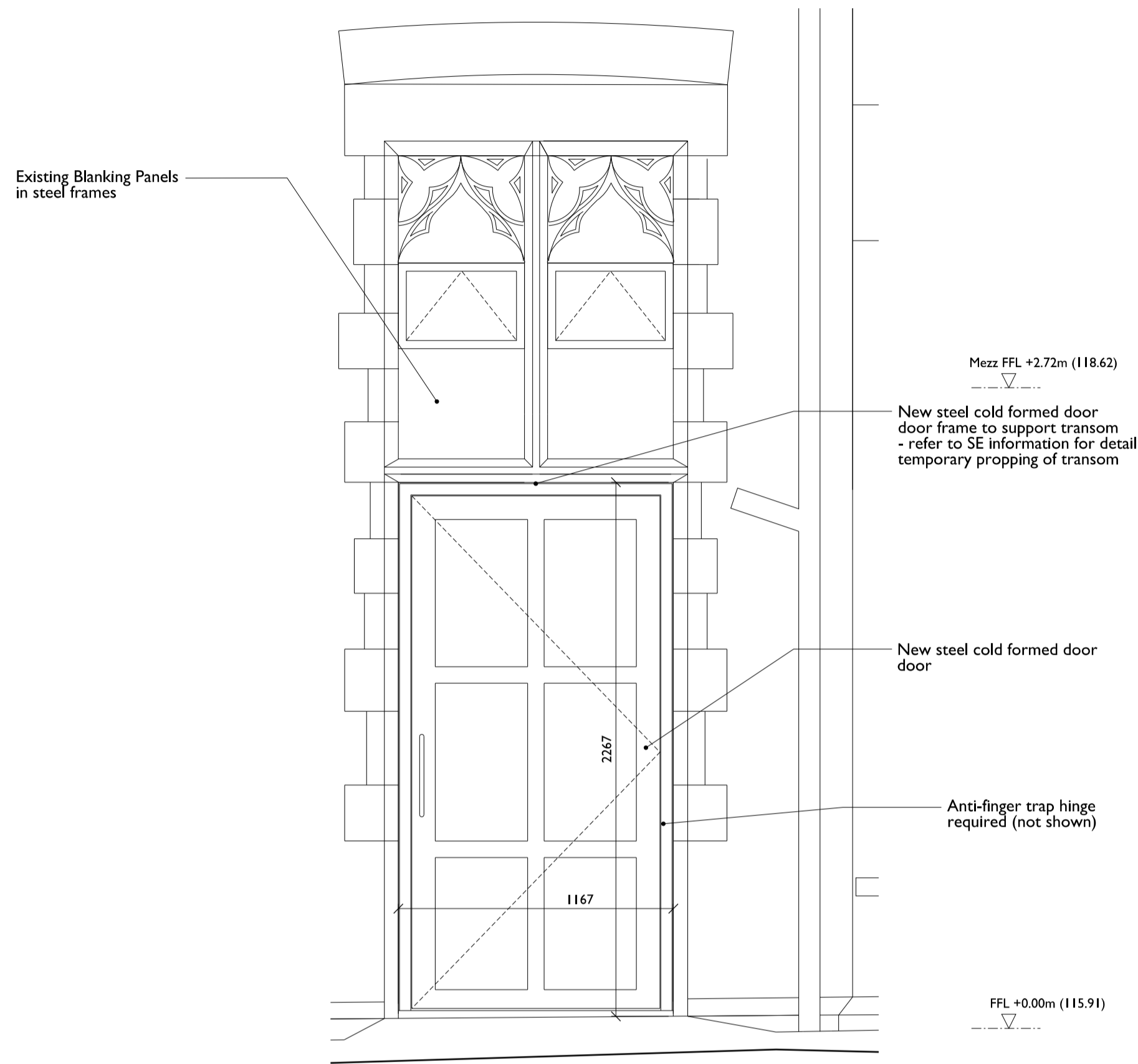


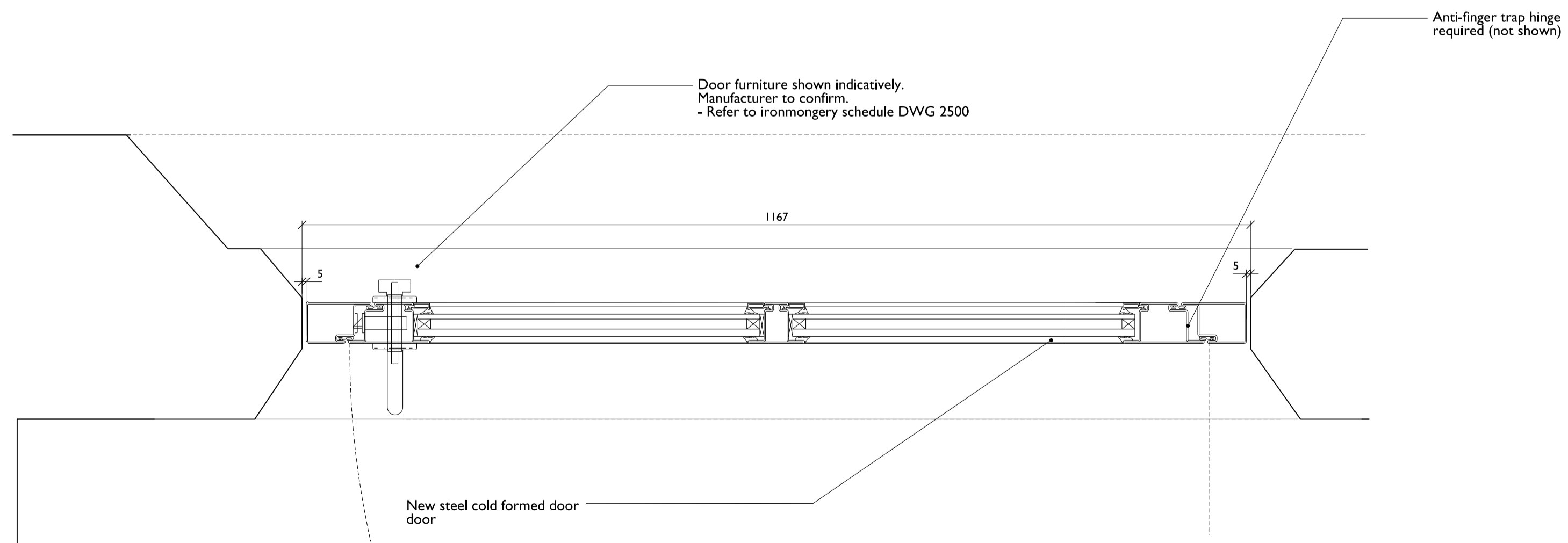
General Note: For steel doors specification see clause A30-316



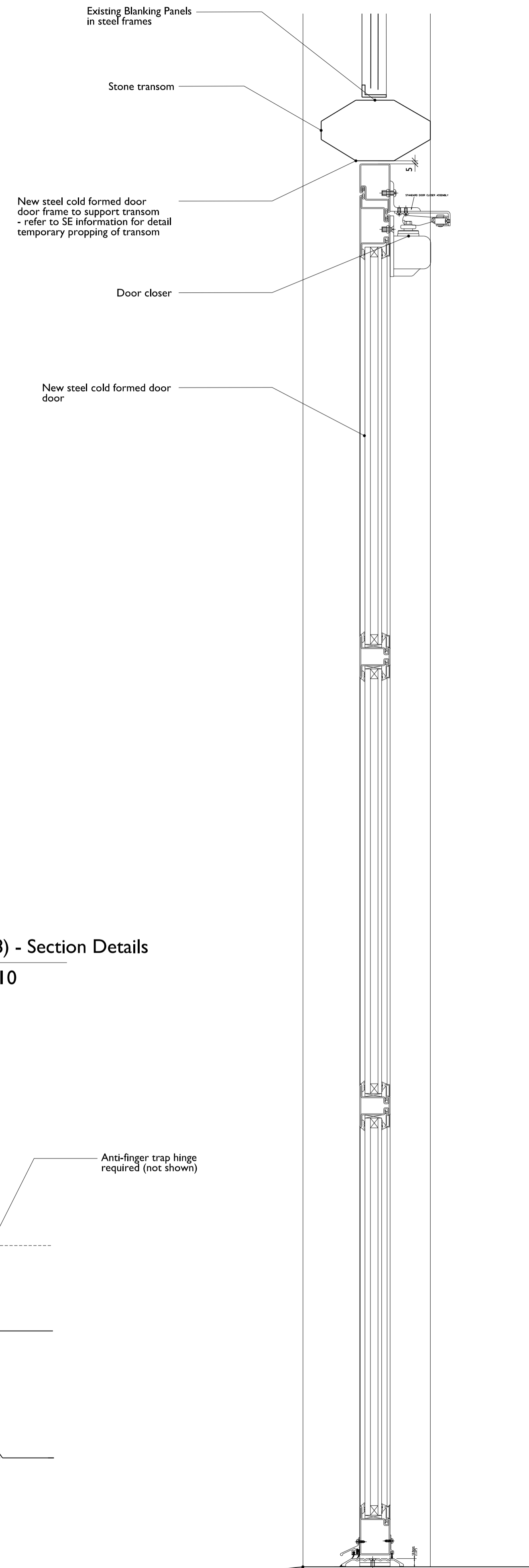
I	D01(W18)-Existing
2605	Scale 1:20/40



2	D01(W18)-Proposed
2605	Scale 1:20/40



3	D01(W18) - Plan Details
2605	Scale 1:5/10



4	D01(W18) - Section Details
2605	Scale 1:5/10

Note:
 - read in conjunction with Window Schedule
 - Stonework: refer to Conservation Architect's statement. Contractor to provide detailed method statement for specialist stoneworks
 - Ironmongery: as per manufacturers specification.
 - Glazing: as per manufacturers recommendation
 - colour of new window frames tbc following colour analysis