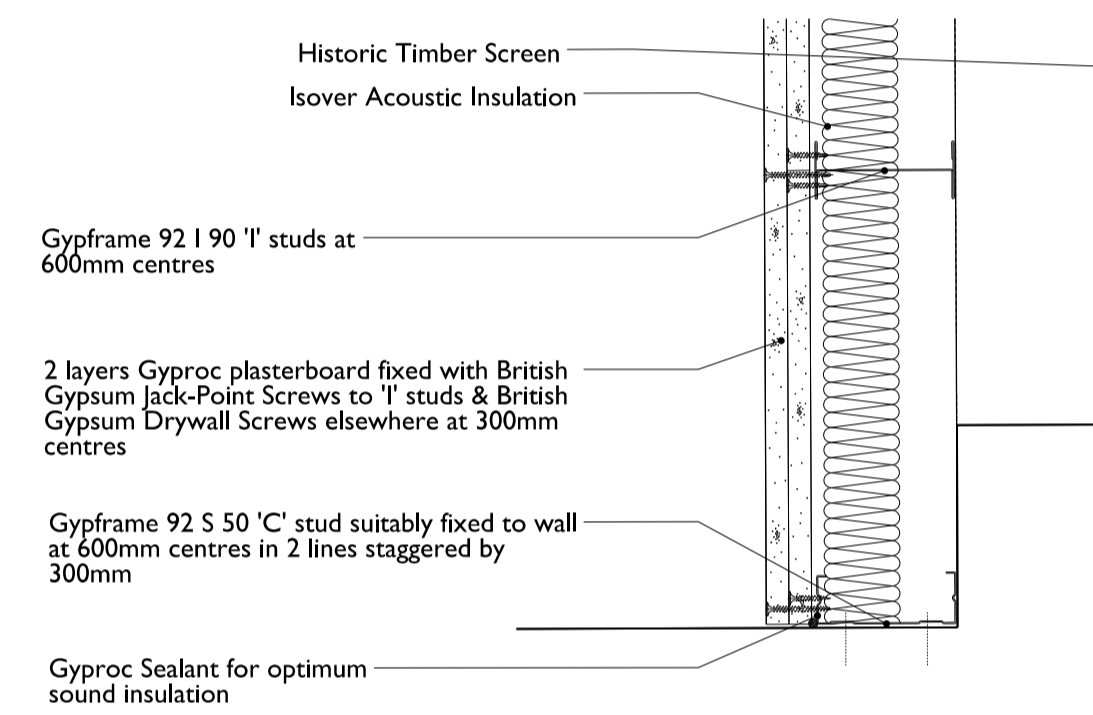
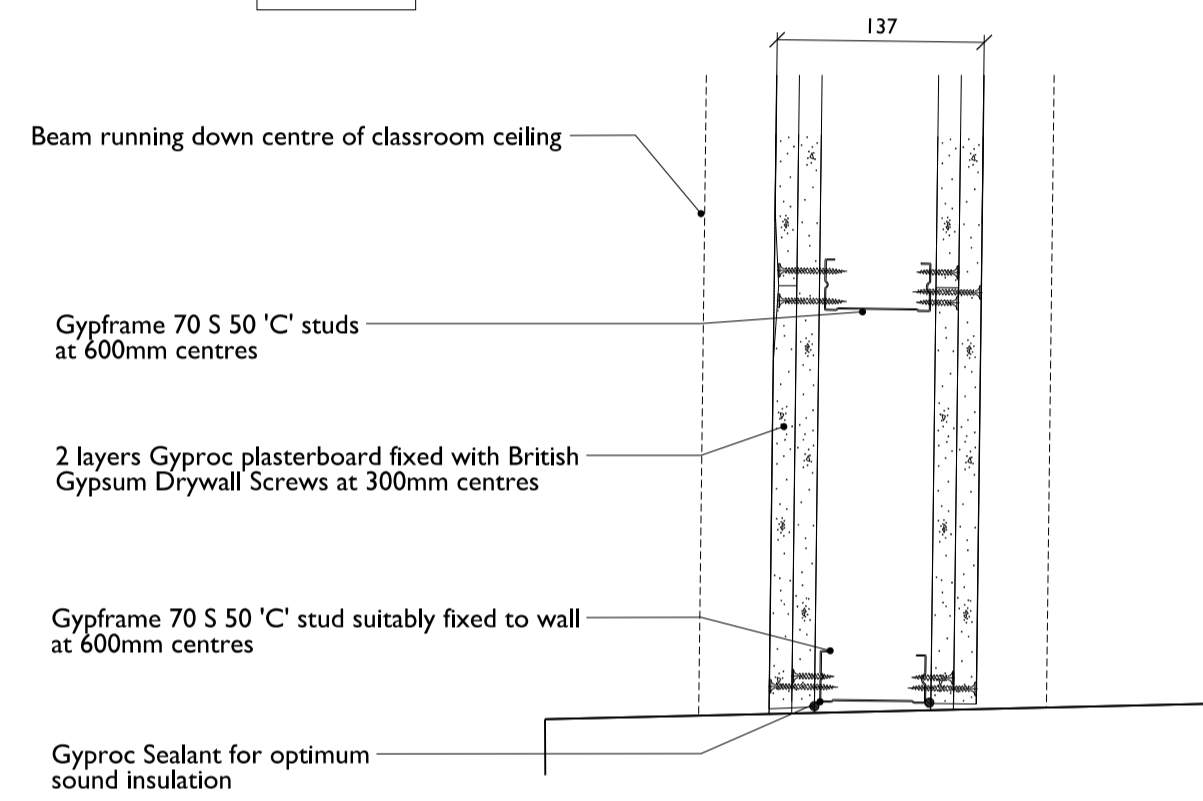


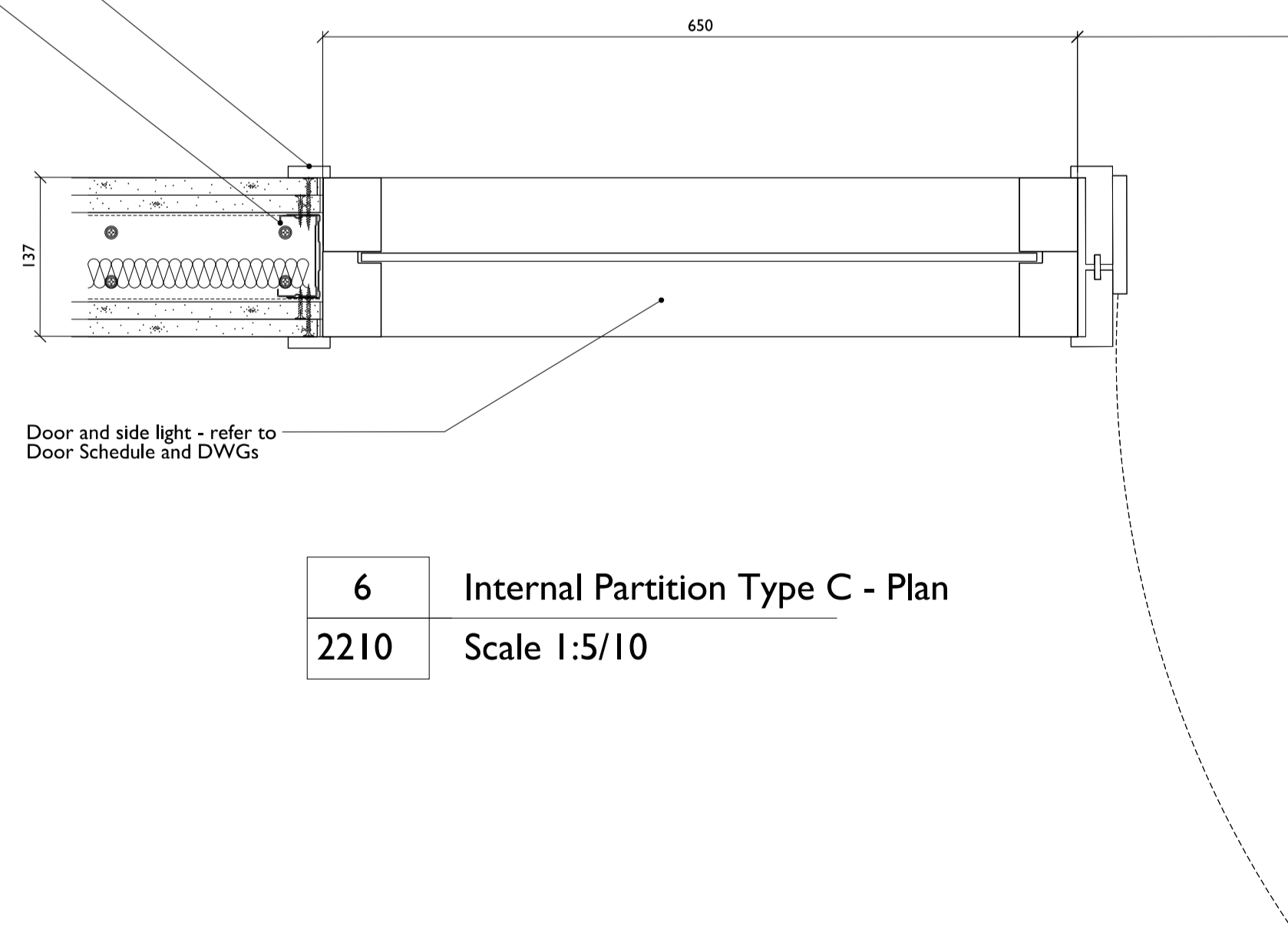
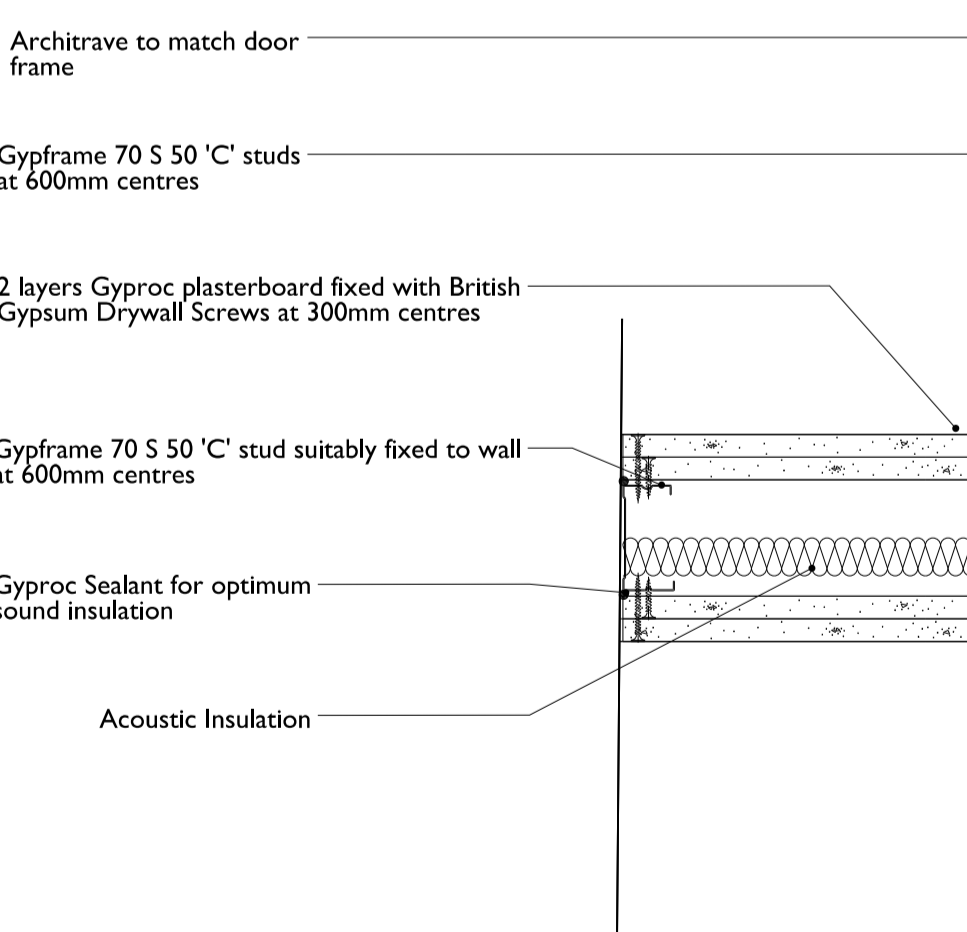
**1** Internal Partition Type B - Section  
2210 Scale 1:5/10

**3** Internal Partition Type D - Section  
2210 Scale 1:5/10



**2** Internal Partition Type B - Plan  
2210 Scale 1:5/10

**4** Internal Partition Type D - Plan  
2210 Scale 1:5/10

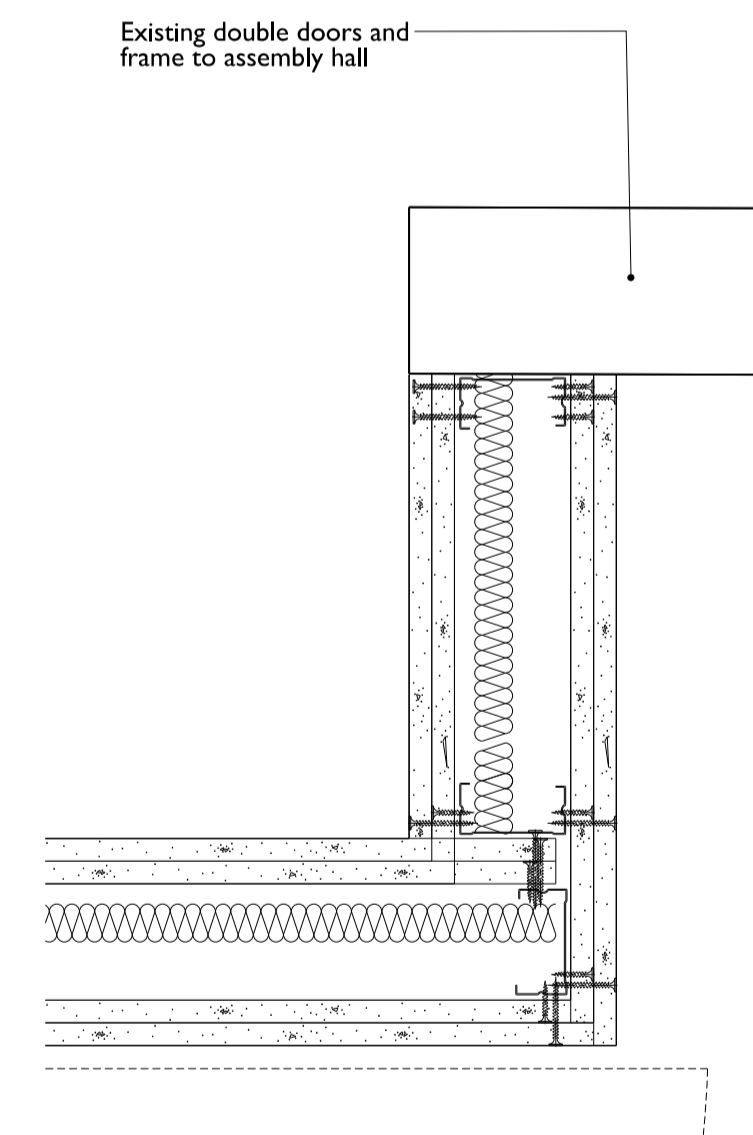
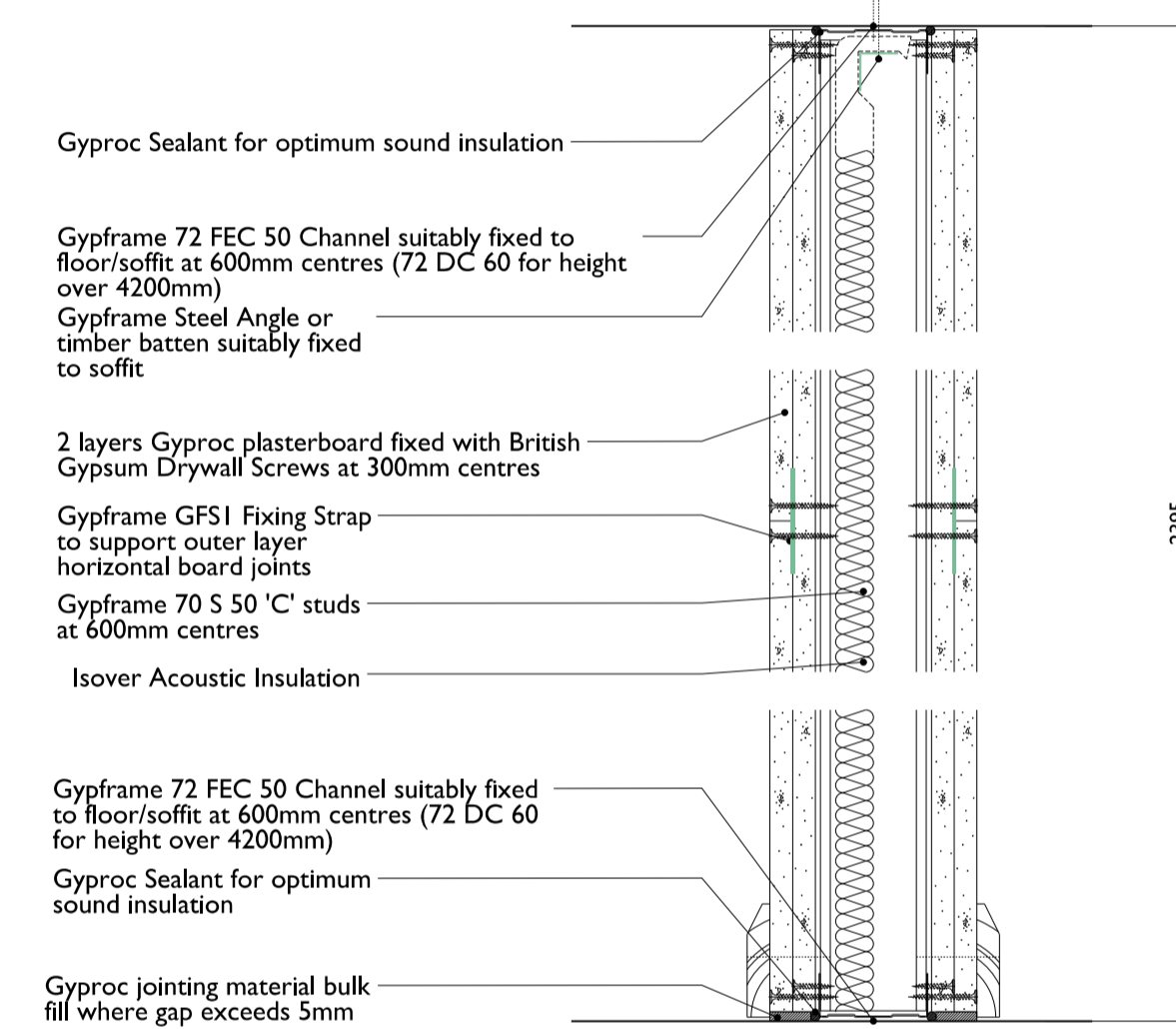


**5** Internal Partition Type C - Section  
2210 Scale 1:5/10

**6** Internal Partition Type C - Plan  
2210 Scale 1:5/10

Wall Type	Description	Min. Acoustic Performance on Site	Min. Fire Rating Required
A B20 -100	113 mm wide studwork between WCs: 50(wide) x100 studs @ 600mm c/c 12mm plywood + 12mm plasterboard + 6.5mm tiles either side	30 dB	-
B B20 -127A	137mm wide partition to room 0.18: 2 x 15mm Wallboard to each side of 70mm Gypframe C studs @ 600mm	45 dB	FD30S
C B20 -127B	137mm wide partition between Hall and Reception Classroom / Reception Lobby: 2 x 15mm Soundbloc to each side of 70mm Gypframe C studs @ 600mm w/ 50mm Isover APR to cavity	55 dB	FD30S
D B20 -156C	Secondary acoustic lining behind historic screen to room 0.18: 2 x 12.5mm Soundbloc to one side of 92 I 90 Gypframe I-stud w/ 50mm Isover steel frame infill batts	tbc dB	FD30S

**7** Partition Schedule  
2210



**5** Internal Partition Type C - Section  
2210 Scale 1:5/10

Opening made in existing masonry - refer to SE information for lintel details

Entrance lobby and reception desk