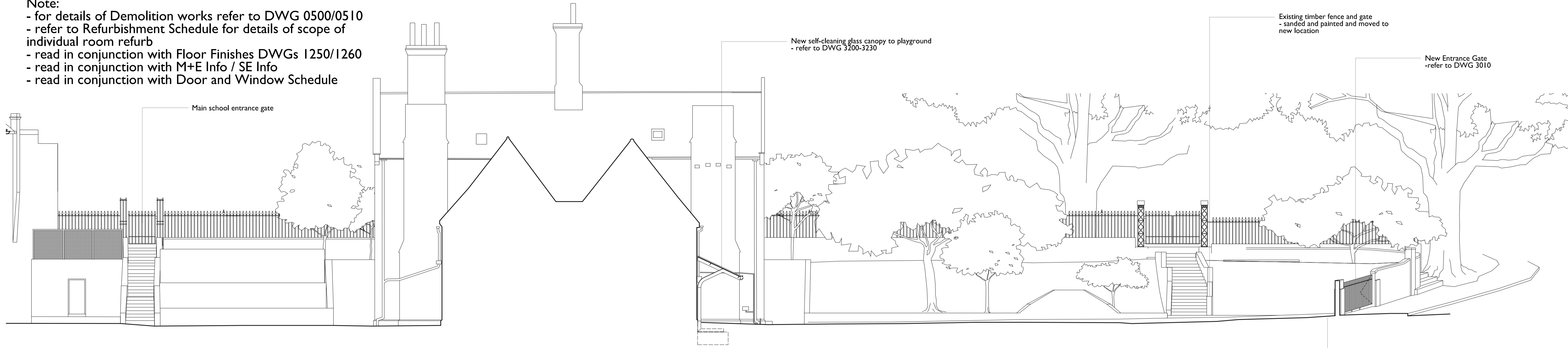


Note:  
 - for details of Demolition works refer to DWG 0500/0510  
 - refer to Refurbishment Schedule for details of scope of individual room refurb  
 - read in conjunction with Floor Finishes DWGs 1250/1260  
 - read in conjunction with M+E Info / SE Info  
 - read in conjunction with Door and Window Schedule



**3** Elevation 3-3  
 1200 Scale 1:100



**2** Section 2-2  
 1200 Scale 1:100



**1** Elevation 1-1  
 1200 Scale 1:100

SCABAL ARCHITECTS LTD.  
 25 Hatton Garden  
 London EC1N 8BQ  
 UK  
 t: +44 (0) 20 7033 8788  
 e: team@scabal.net

Project  
**CHRIST CHURCH PRIMARY SCHOOL**  
 Christchurch Hill, London NW3 1JH  
 Drawing Title

**Elevation 1-1/Section 2-2/Elevation 3-3-Proposed**

Project Number **1200**  
 Drawing Number **1:100**  
 Scale @ A1/A3 **1:200**  
 Status **TENDER**  
 Date **06.03.15**  
 Revision **C**  
 Revision Notes  
 Write a description of what has changed here and here if needed

COPYRIGHT ©  
 All dimensions to be checked on site prior to commencement of work  
 Discrepancies between drawings and information to be referred to CA without delay