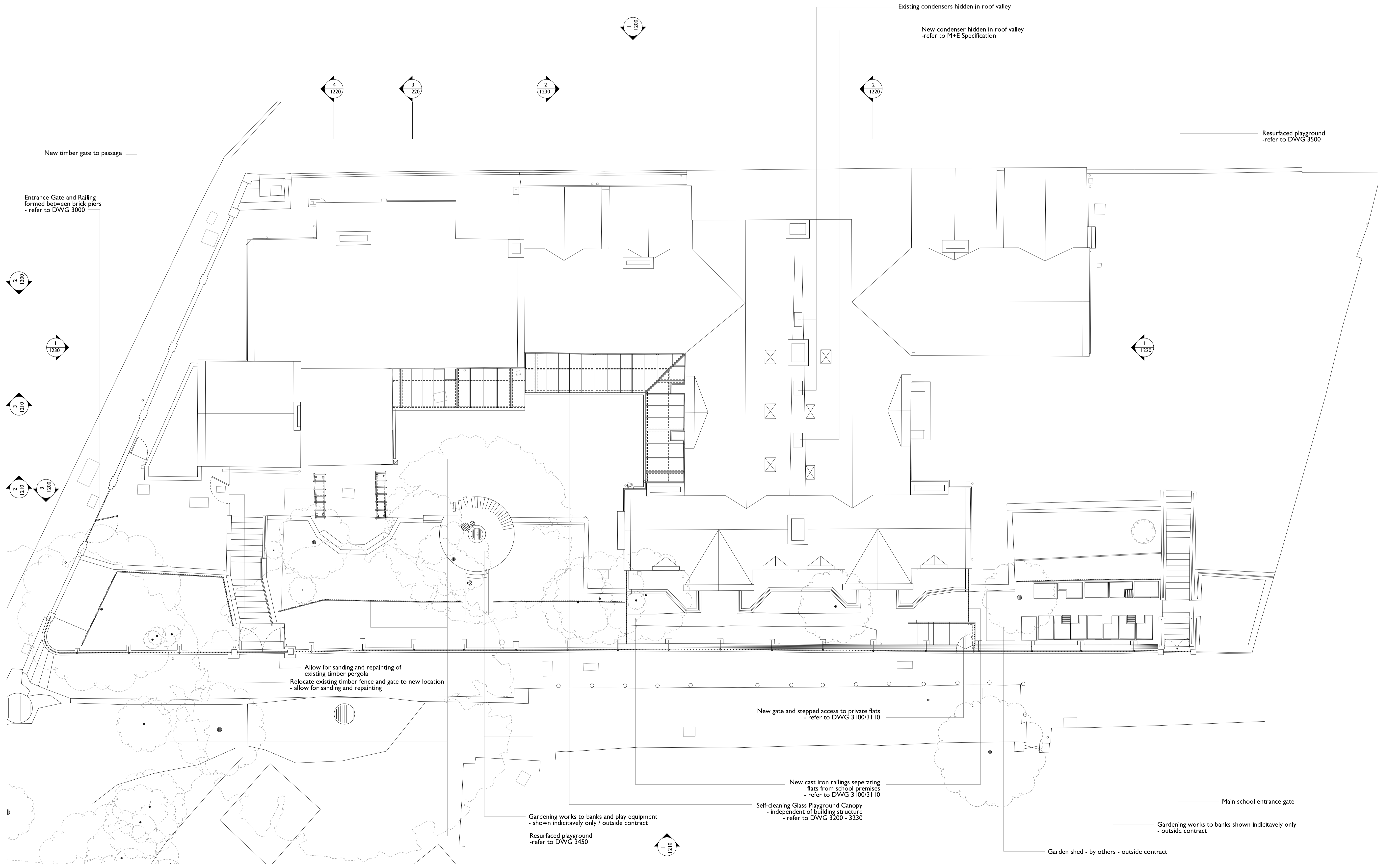


- Note:
- for details of Demolition works refer to DWG 0500/0510
 - refer to Refurbishment Schedule for details of scope of individual room refurb
 - read in conjunction with Floor Finishes DWGs 1250/1260
 - read in conjunction with M+E Info / SE Info
 - read in conjunction with Door and Window Schedule



Project
CHRIST CHURCH PRIMARY SCHOOL
 Christchurch Hill, London NW3 1JH
 Drawing Title

Project Number
1120

Scale @ A1/A3
1:100
1:200

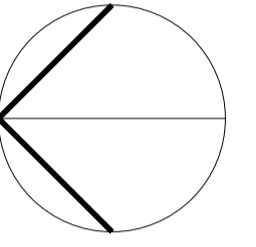
Status
TENDER

Revision
C

Date
06.03.15

Revision Notes
 Write a description of what has changed here and here if needed

SCABAL
 ARCHITECTS
 STUDIO ULLINAN AND UCK
 TD. © 25 Hatton Garden
 London EC1N 8BQ
 UK
 t: +44 (0) 20 7033 8788
 e: team@scabal.net



COPYRIGHT ©
 All dimensions to be checked on site prior to commencement of work
 Discrepancies between drawings and information to be referred to CA without delay

Project Number
537