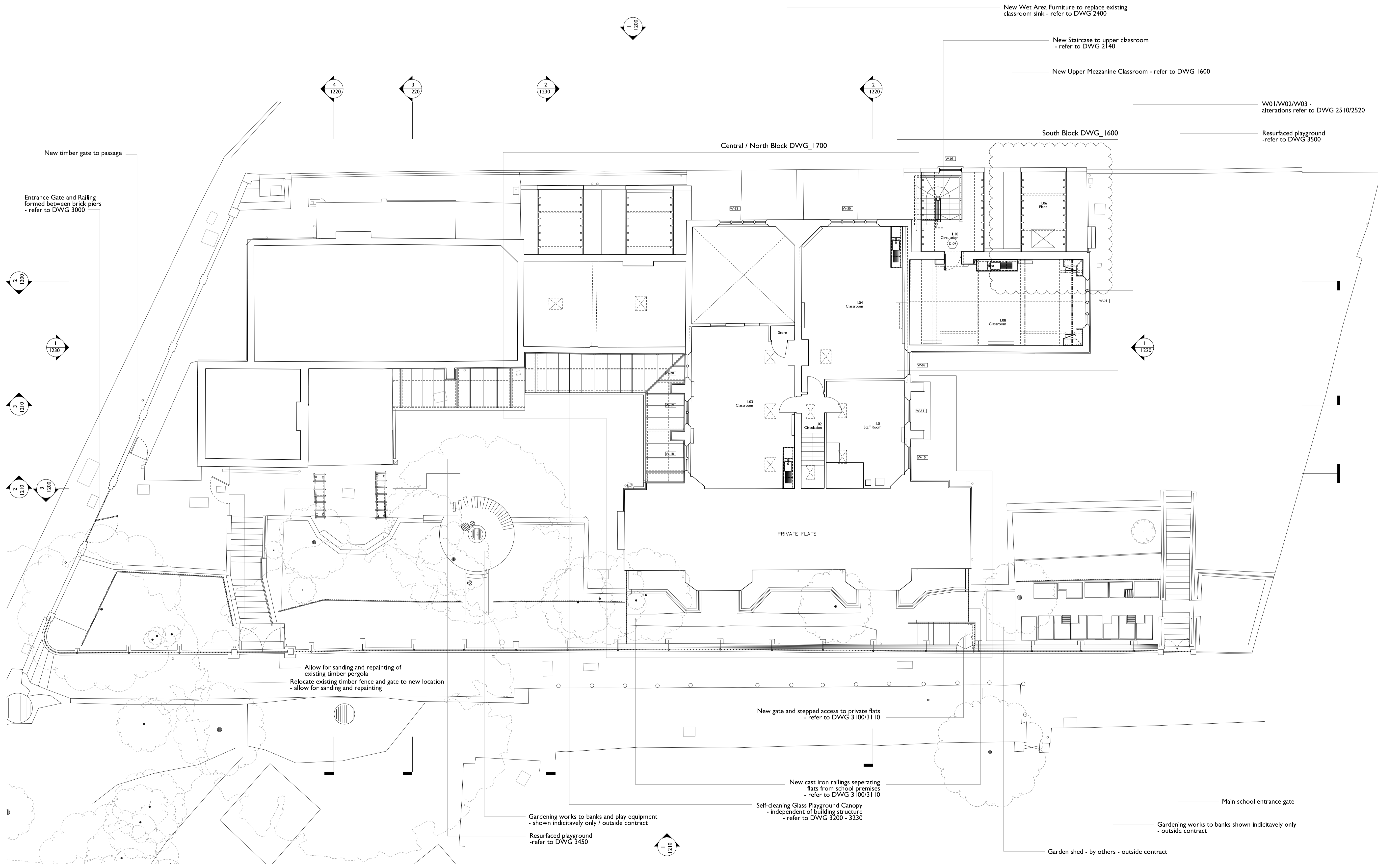


- Note:
- for details of Demolition works refer to DWG 0500/0510
 - refer to Refurbishment Schedule for details of scope of individual room refurb
 - read in conjunction with Floor Finishes DWGs 1250/1260
 - read in conjunction with M+E Info / SE Info
 - read in conjunction with Door and Window Schedule



SCABAL
 ARCHITECTS LTD.
 25 Hatton Garden
 London EC1N 8BQ
 UK
 t: +44 (0) 20 7033 8788
 e: team@scabal.net

Project
CHRIST CHURCH PRIMARY SCHOOL
 Christchurch Hill, London NW3 1JH
 Drawing Title

FIRST FLOOR PLAN - PROPOSED

Project Number
537

Drawing Number
1110

Scale @ A1/A3
1 : 100
1 : 200

Status
Construction E

Date
17.06.15

Revision Notes
 Write a description of what has changed here
 and here if needed

COPYRIGHT ©
 All dimensions to be checked on site prior to commencement of work
 Discrepancies between drawings and information to be referred to CA without delay

