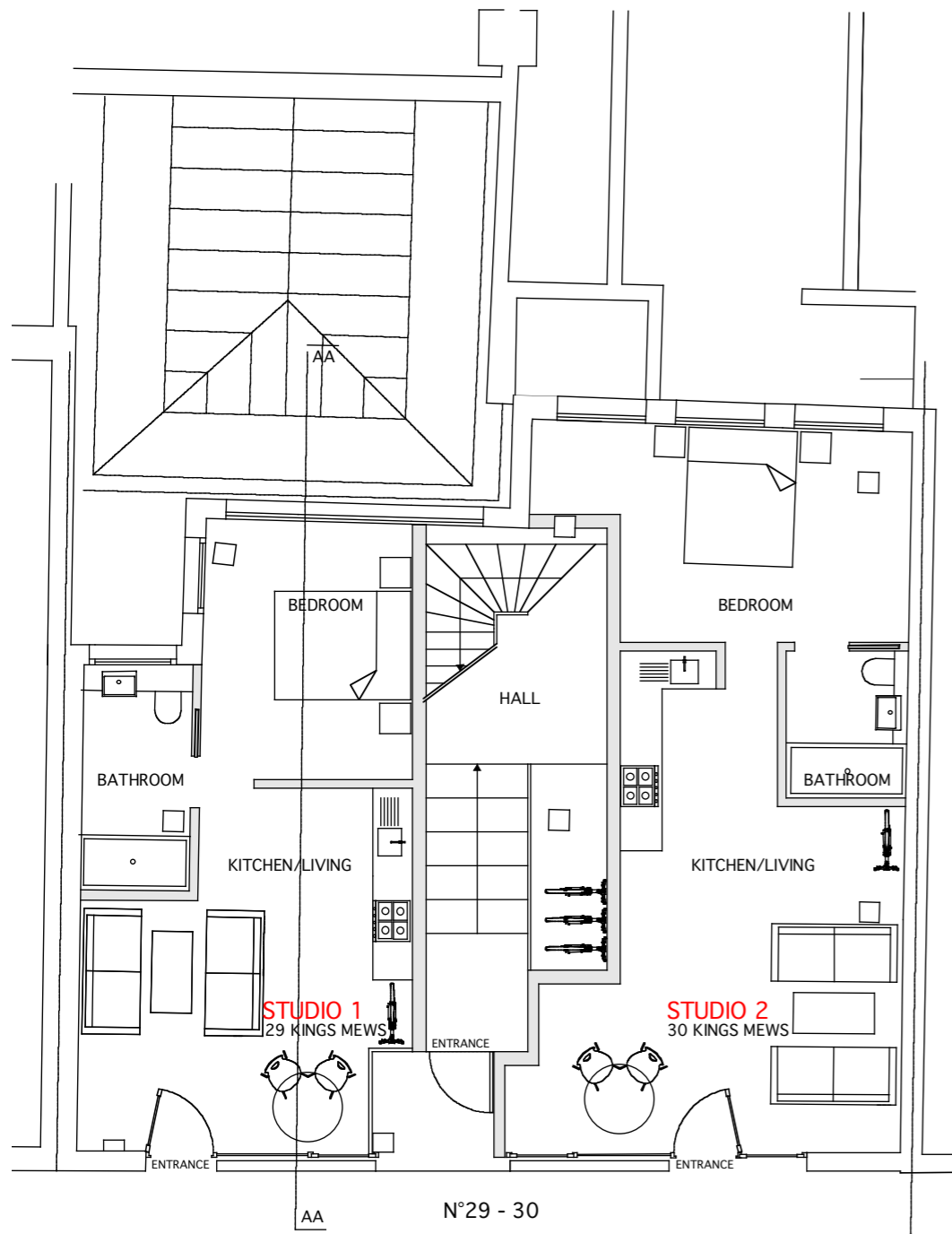


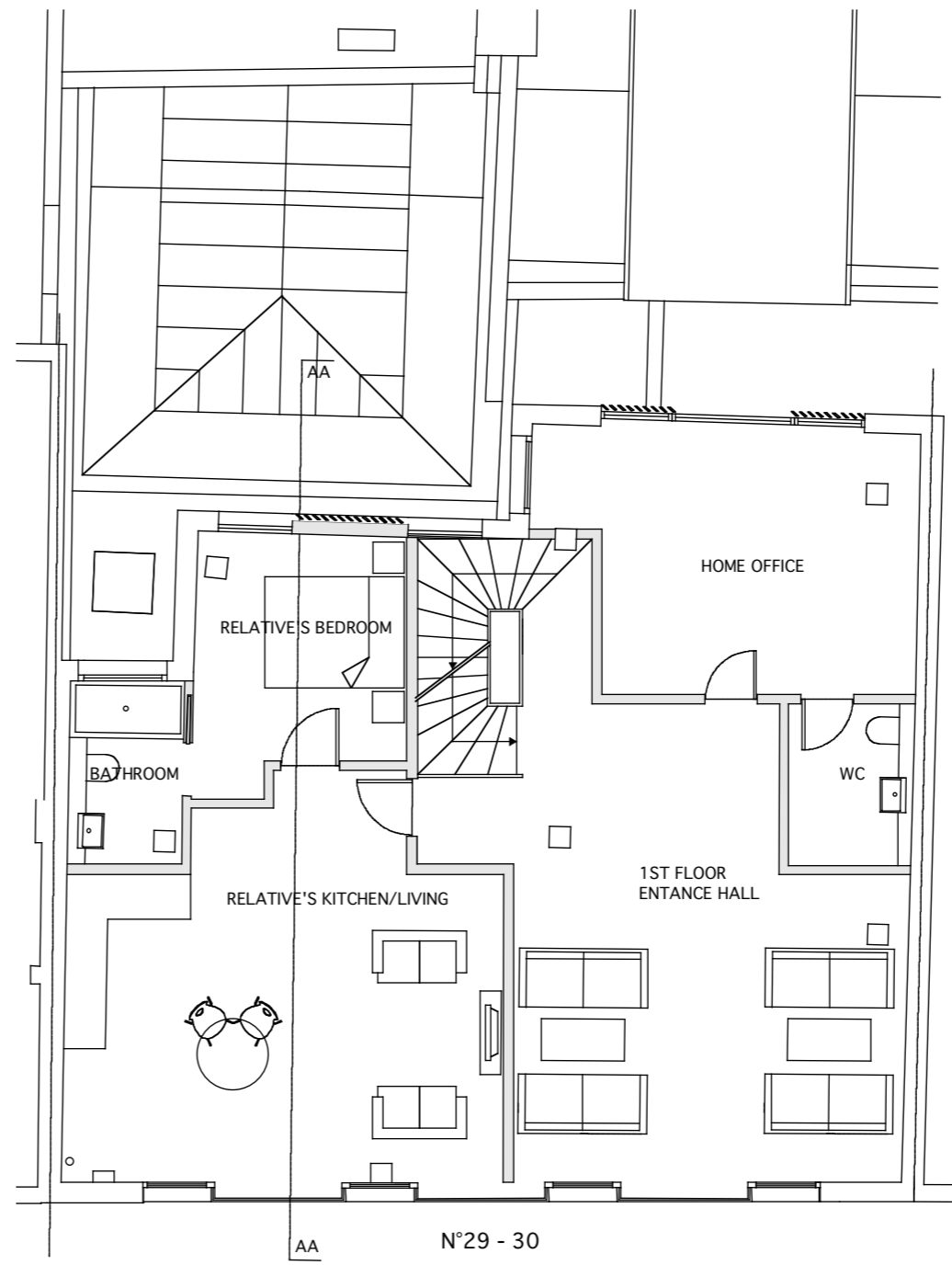
General Notes
 All dimensions to be verified on site
 To be read in conjunction with all relevant documents
 In the event of discrepancy notify the Architect immediately
 This document is copyright of Hugh Cullum Architects Ltd

Issue Status
 SK Information F Feasibility D Design
 P Permissions S Scheme T Tender
 C Construction E Existing Condition

■ New Construction



GROUND FLOOR



FIRST FLOOR



(.): Issued for Planning Application (07.09.15/MS)
 Revision: Information (date/drawn by)

HUGH CULLUM ARCHITECTS LTD
 Bloomsbury Design
 61b Judd Street
 London WC1H 9QT
 t 020 7383 7647
 f 020 7387 7645
 mail@hughcullum.com

29/30 King's Mews
Planning Application
 Proposed
 Ground and First Floor
 1:100@A3 September 2015
KM29/30-P101(.)