

Longitudinal section through CPL indicating clear views across Retail Unit R01

Tenant signage indicative only  
Fit out indicative only

5.16 CONTINUED

The glass details shown on the following pages have been developed with specialist glass engineers Eckersley O'Callaghan, and they strive for superior thermal performance and minimal visual obstruction.

The new retail unit, through rigorous detailing and high-quality materials would be transparent and open to both New Oxford St. and the new Public realm.

Glazing fixings will be fully concealed in the floor build-up, only restrained to the existing soffit above and with no intermediate visual obstruction. As a result this will provide clear views through.

TECHNICAL APPROACH

The new retail unit would be glazed with a large-format, full-height, self-supporting Total Vision Glass Walling System. Glazing panels would be bottom fixed to a stainless steel base channel assembly which will be recessed flush to the external and internal floor finishes.

Joints between panels will be glass to glass - including corner junctions. There would be a continuous powder coated aluminium profile fixed to the soffit of the existing slab under the Bridge Link in order to provide restraint at the top of glazing panels.

Panels are sized in order to follow the rhythm of existing level 01 glazing panes. Glass to glass joints further foster visual continuity with the existing building.

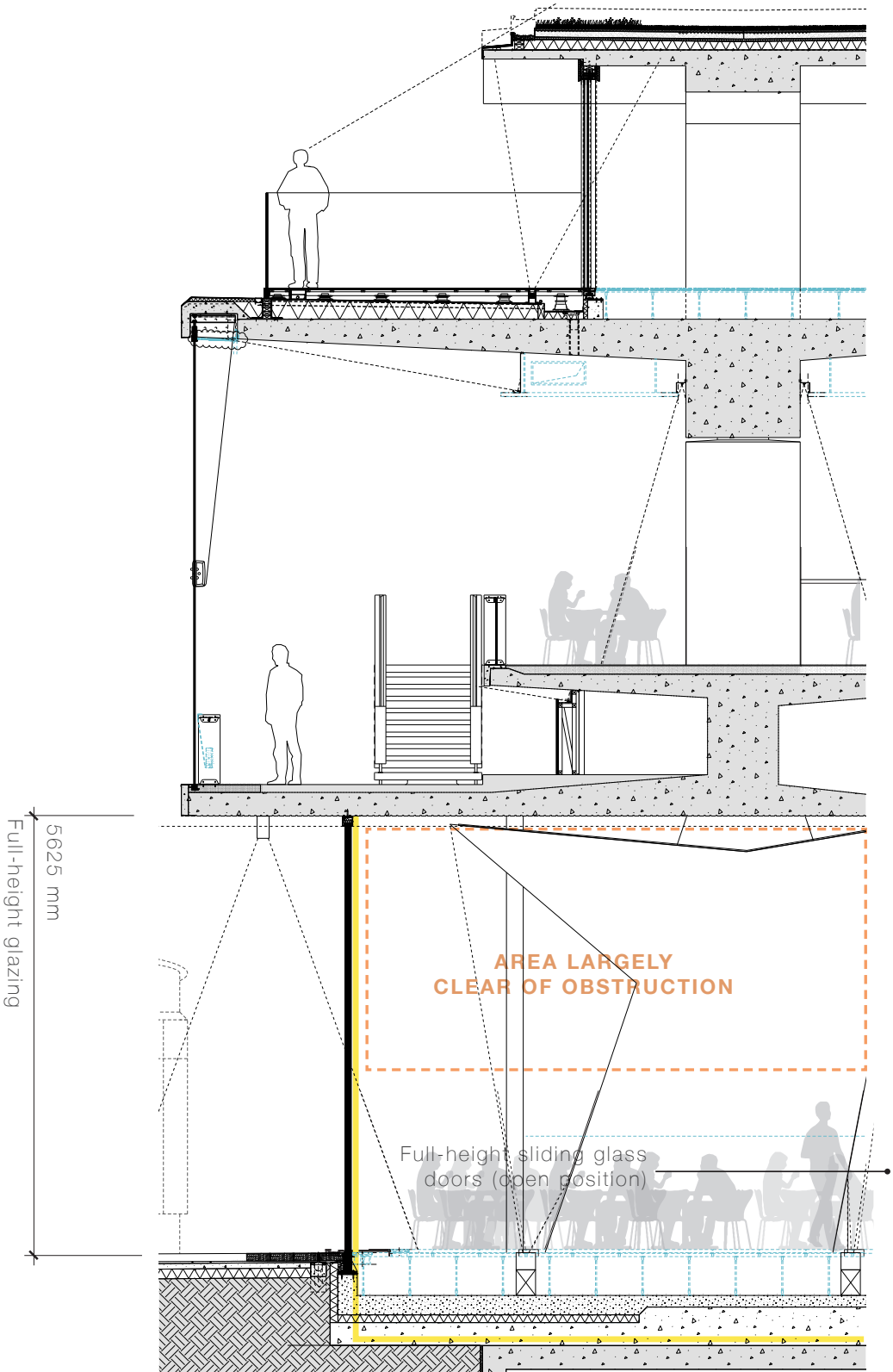
A low-iron glass has been chosen, due to its greater transparency, in order to provide clearer views through R01.

We are also proposing a length of 11 meters of sliding glass doors to the south side of unit R01. These doors would allow further animation of the public space and act to 'dematerialise' the unit, reinforcing the light-touch heritage approach .

The sliding panels match the fixed panels so as to provide a uniform appearance when closed.

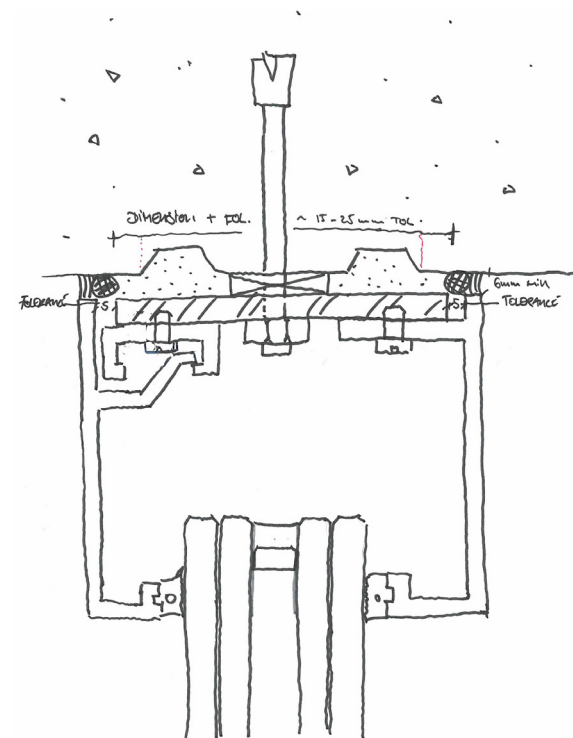


Ongoing research and development of glass specification, detailing and fixings to minimise impact on soffit.

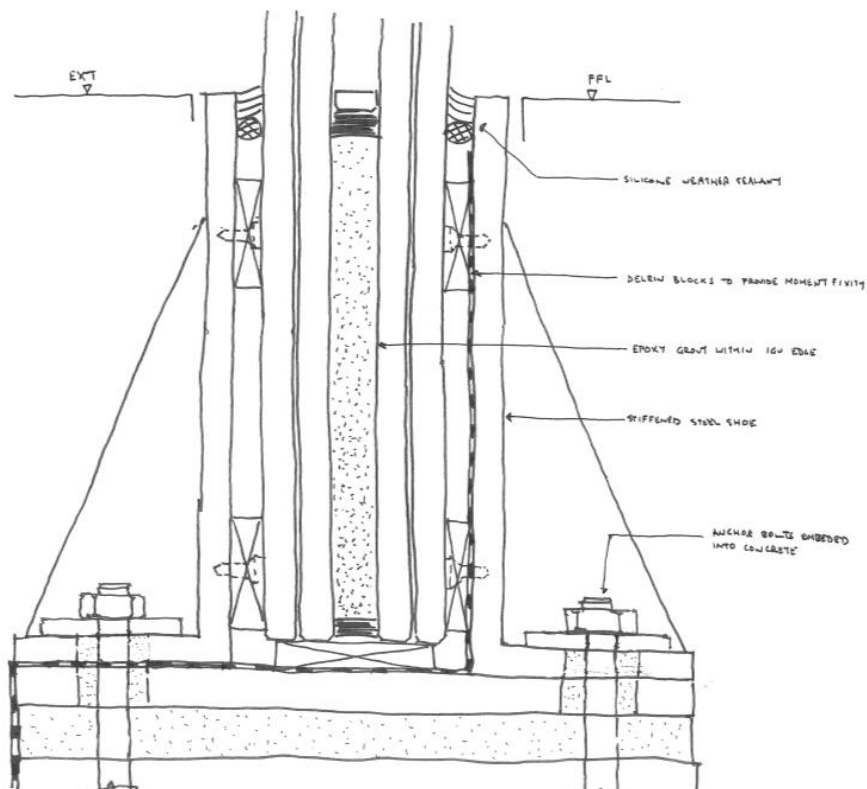
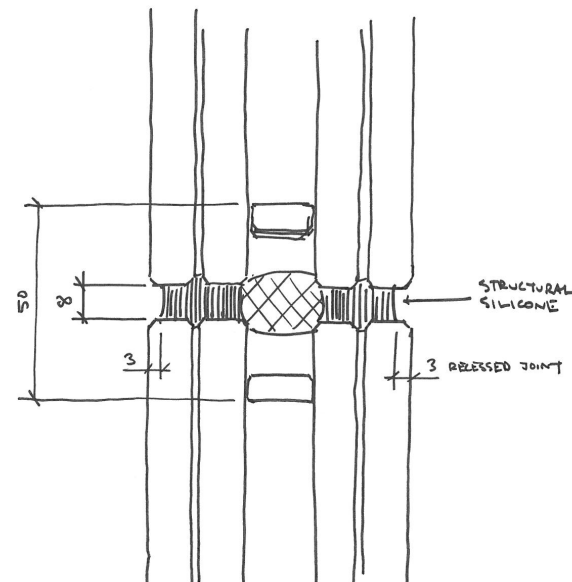


Proposed Bridge Infill Section

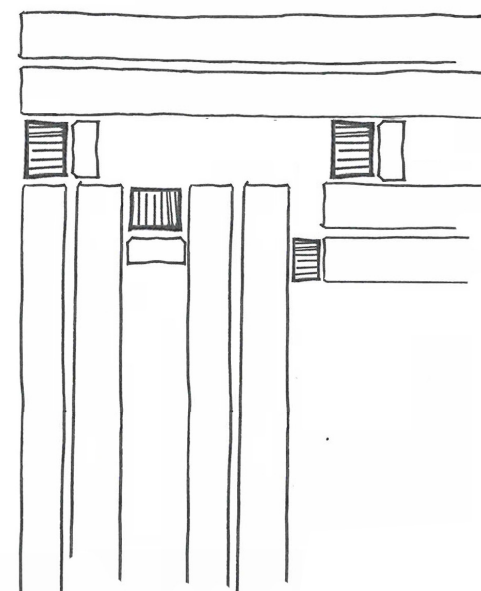
Retail Unit R01



TYPICAL JOINT



CORNER JOINT



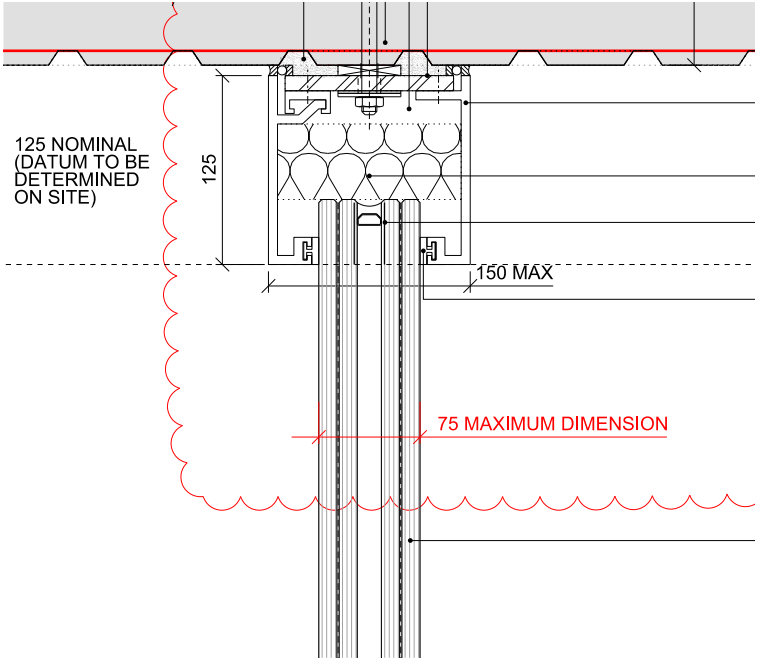
Engineer's sketches

### 5.17 R01 CRITICAL GLAZING DETAILS

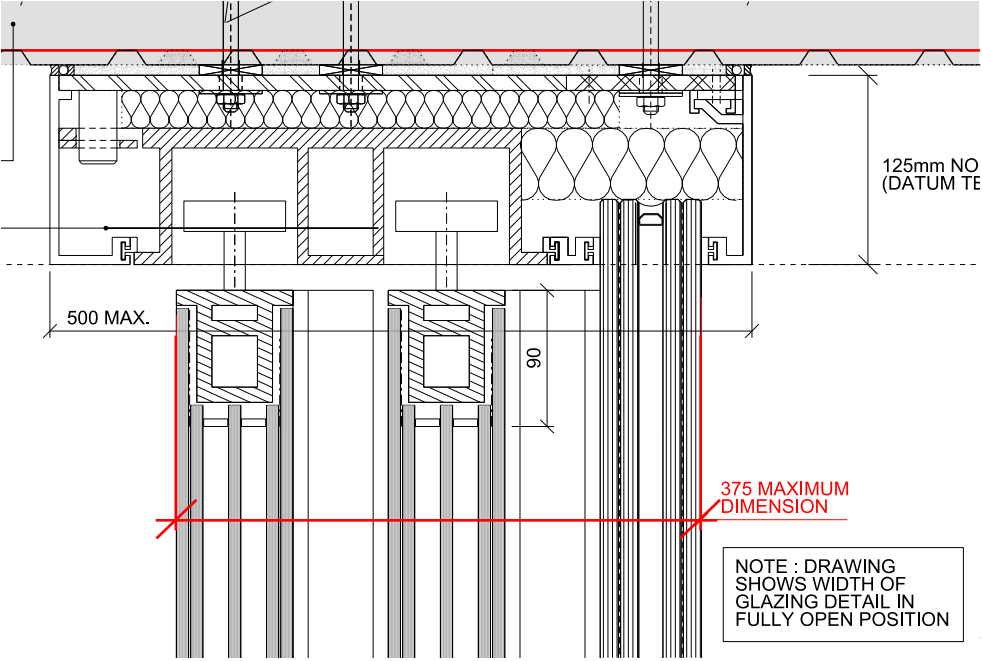
Details for the glazing to the R01 infill are currently under development. Maximum dimensions included on updated drawings within the planning set (revision PL2) show a conservative estimate of what is considered achievable in terms of detail width. The applicant's design intent is for further development of details to achieve widths below these figures in order to provide as minimal as possible a junction between proposed and heritage features.

Included drawings with updated glazing details/ dimensions:

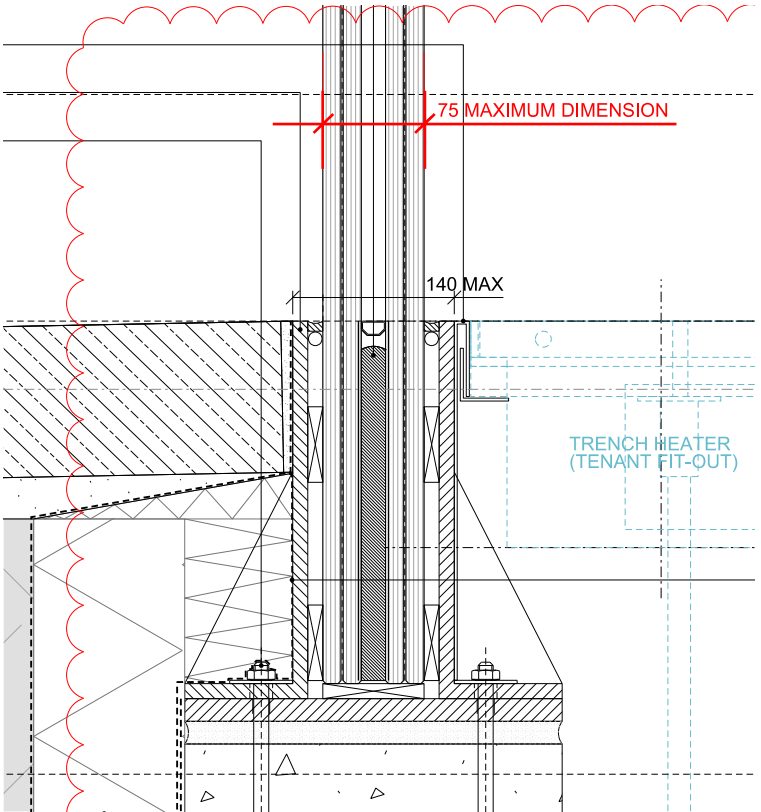
552-41178  
552-41180  
552-41182  
552-41183  
552-15132



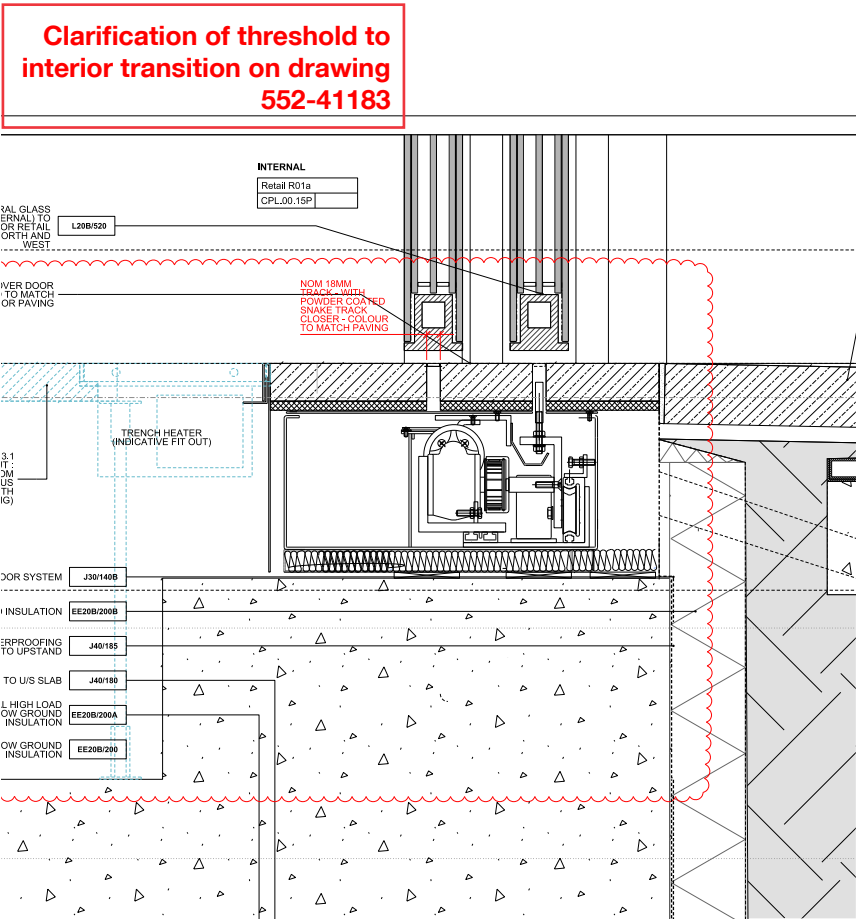
Typical Glazing Section - Head Detail  
See drawing 552-41178-CPL



Glazing Section - Head Detail to R01 Sliding Doors  
See drawing 552-41182-CPL



Typical Glazing Section - Base Detail  
See drawing 552-41180-CPL



Glazing Section - Base Detail to R01 Sliding Doors  
See drawing 552-41183-CPL