

Reproduced from the O.S. map with the permission of the Controller of H.M.S.O. Licence no. LA086339. Scale 1:1250

6A St Pancras Way - NW1

PEX0200544

PEX0200435

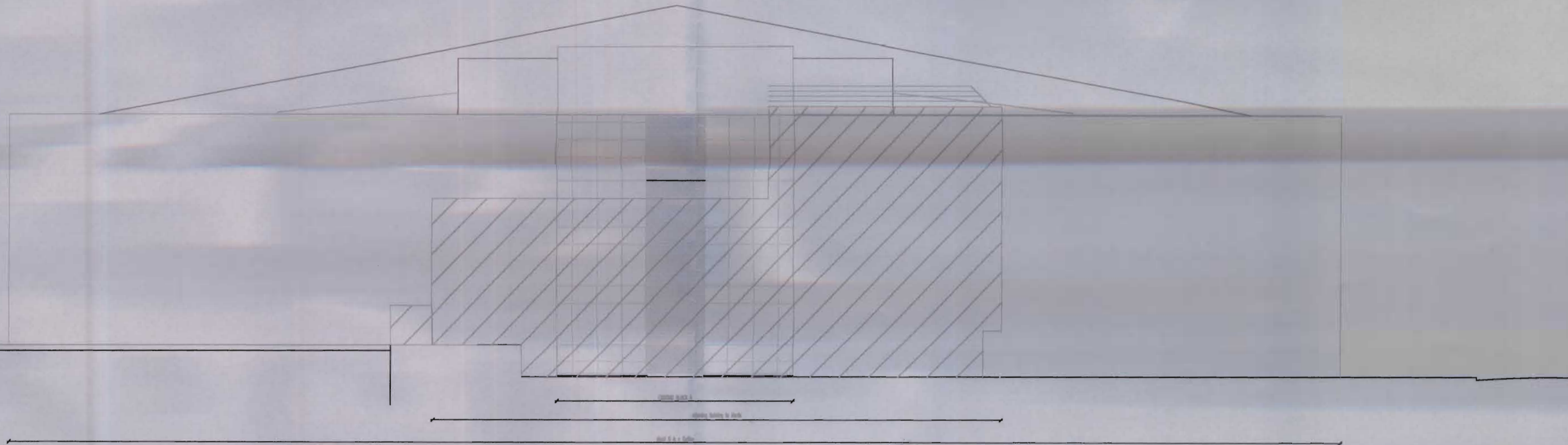


Reproduced from the O.S. map with the permission of the Controller of H.M.S.O. Licence no. LA086339. Scale 1:1250

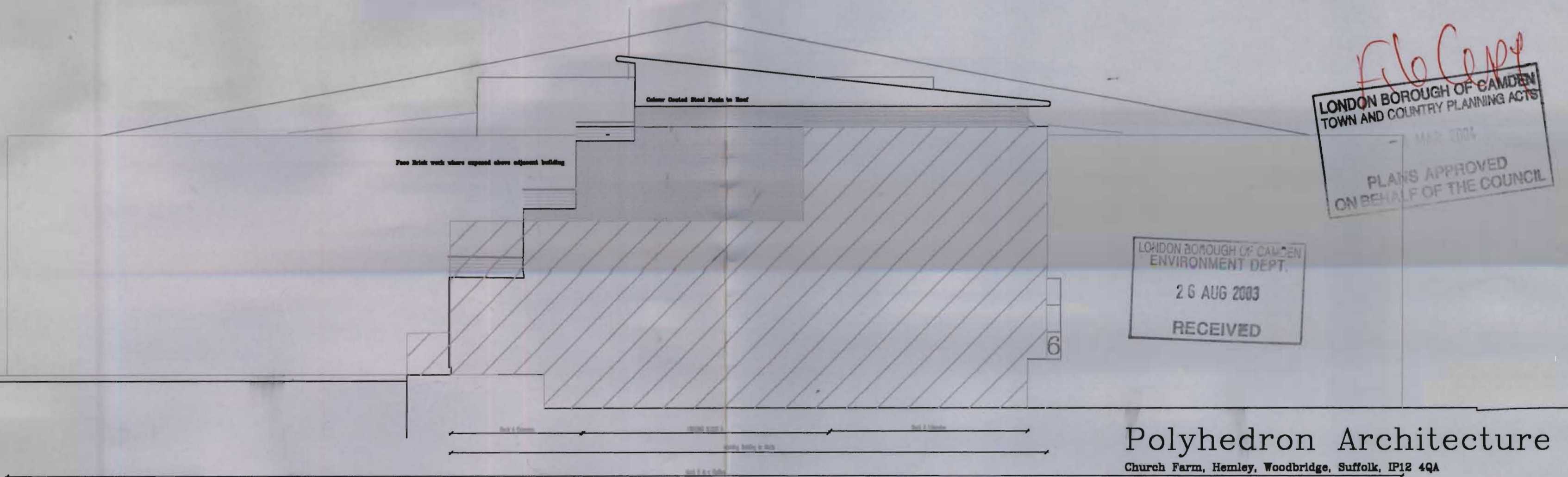
6 St Pancras Way

PEX0200435

2003/1313/P



North Elevation Existing~Adjoining Building Boundary Wall Hatched



North Elevation Proposed~Adjoining Building Boundary Wall Hatched

Flo Copp
 LONDON BOROUGH OF CAMDEN
 TOWN AND COUNTRY PLANNING ACTS
 MAR 2004
 PLANS APPROVED
 ON BEHALF OF THE COUNCIL

LONDON BOROUGH OF CAMDEN
 ENVIRONMENT DEPT.
 26 AUG 2003
 RECEIVED

2003/1313/P

Polyhedron Architecture Limited

Church Farm, Hemley, Woodbridge, Suffolk, IP12 4QA

Tel 01479 736 478

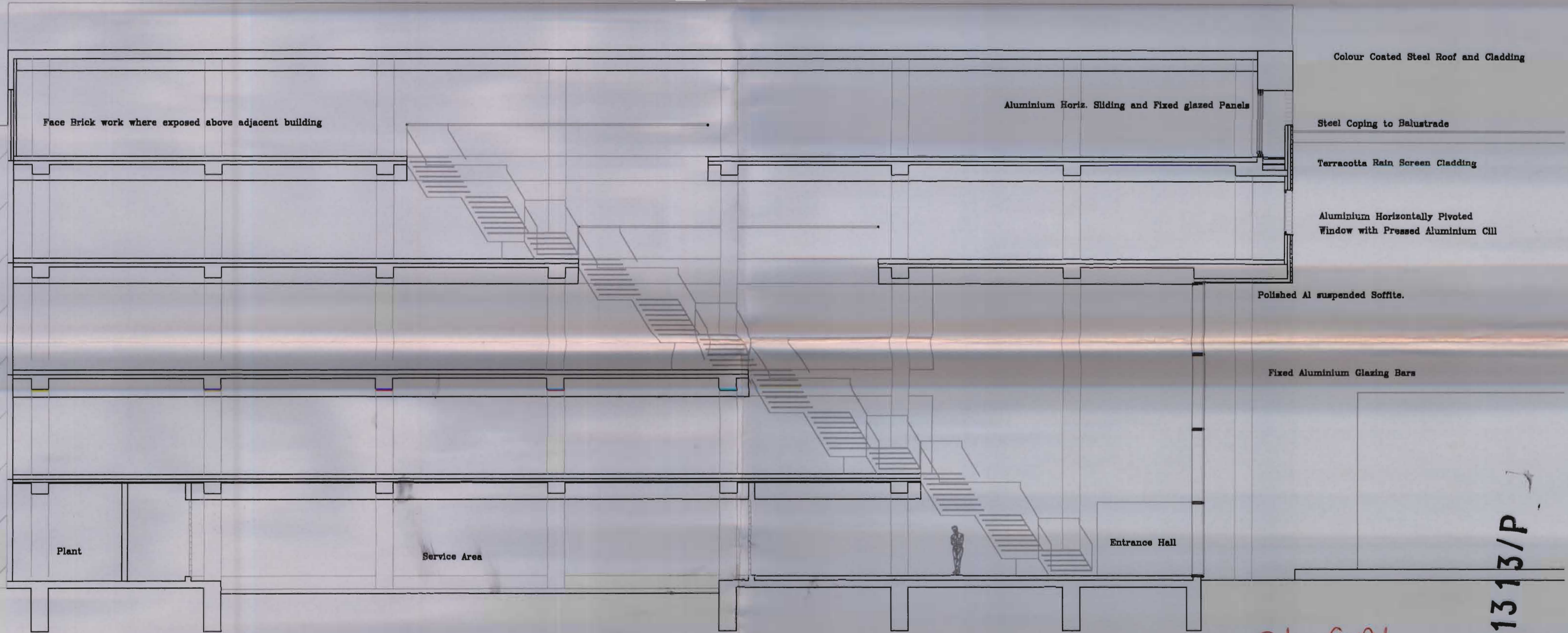
Canal Reach, 6 St Pancras Way, London ,NW1

North Elevation
 Extension A Block

A2 1=100 A4 1=200

STPA/013/-

2003/1313/P
1



Note That existing Entrance Hall and New Entrance Hall have level Access from Pavement

LONDON BOROUGH OF CAMDEN
ENVIRONMENT DEPT.
26 AUG 2003
RECEIVED

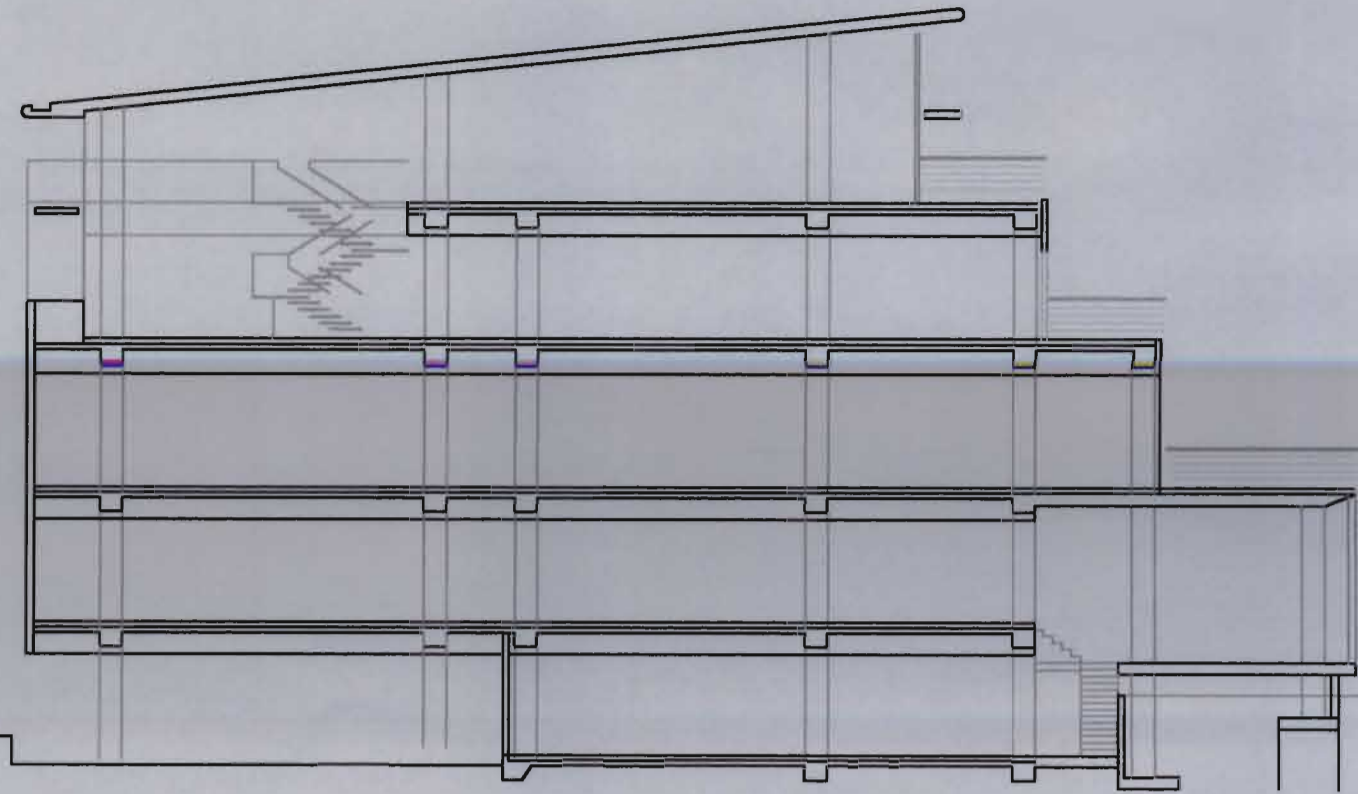
LONDON BOROUGH OF CAMDEN
TOWN AND COUNTRY PLANNING ACTS
- 4 MAR 2004
PLANS APPROVED
ON BEHALF OF THE COUNCIL

2003/1313/P

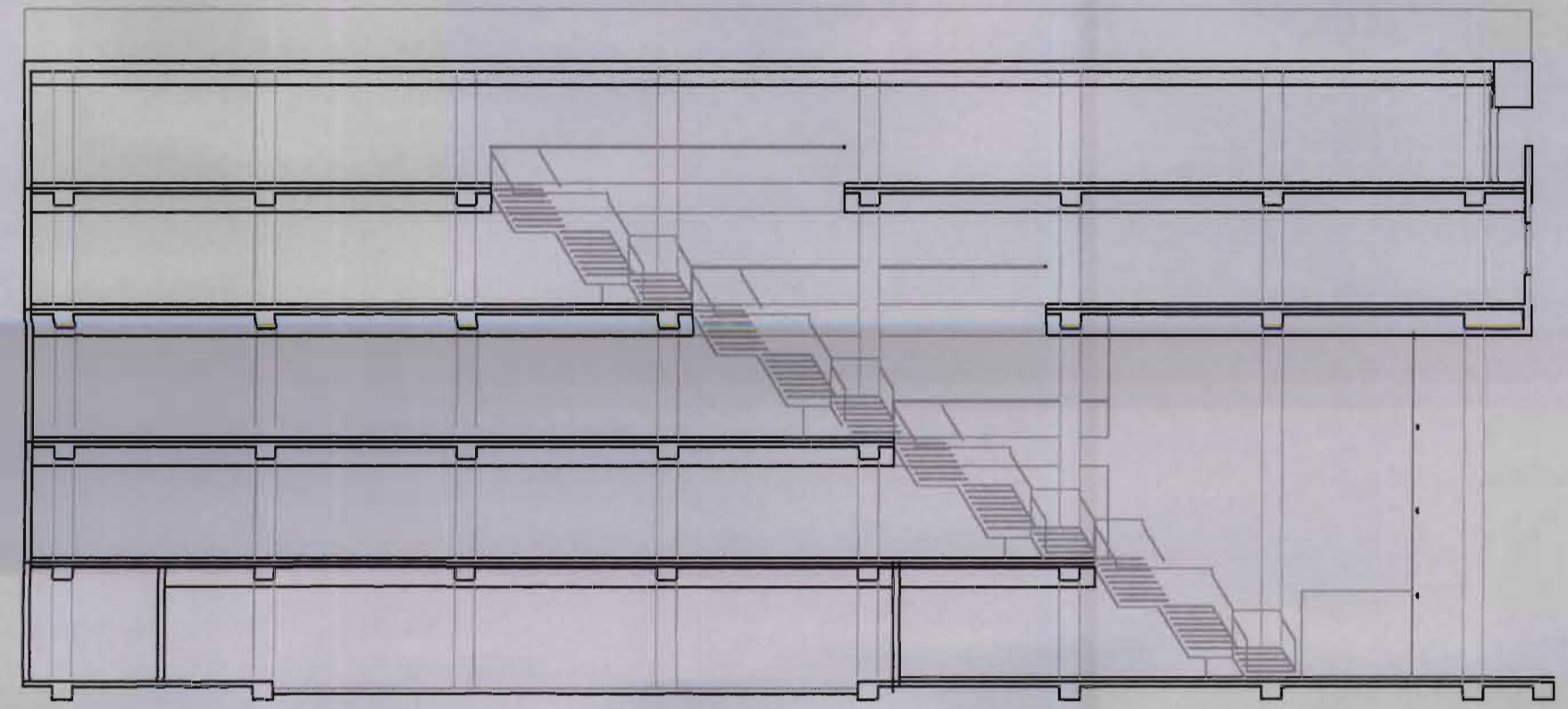
Polyhedron Architecture Limited
 Church Farm, Hemley, Woodbridge, Suffolk, IP12 4QA Tel 01478 798 478
 Canal Reach, 6 St Pancras Way, London ,NW1
 Block A Extension
 Section 011
 A2 1=100 A4 1=200

STPA/011/-

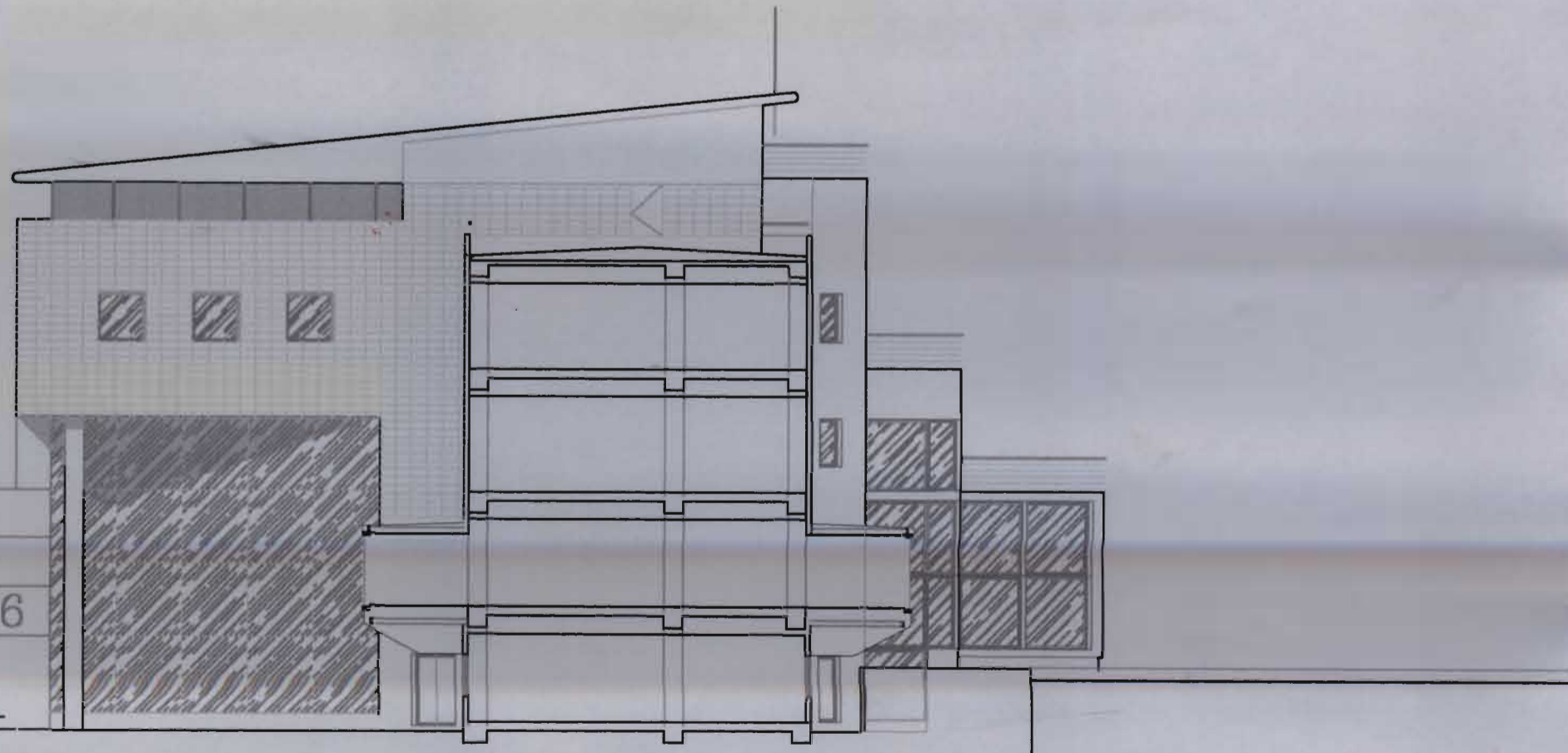
2003/1313/P



Section 010



Section 011



South East Elevation / Section 009

File Copy
LONDON BOROUGH OF CAMDEN
TOWN AND COUNTRY PLANNING ACTS
- 4 MAR 2004
PLANS APPROVED
ON BEHALF OF THE COUNCIL

2003/1313/P

Polyhedron Architecture Limited

Church Farm, Hemley, Woodbridge, Suffolk, IP12 4QA Tel 01478 736 478

Canal Reach, 6 St Pancras Way, London ,NW1

New Entrance B Block Level 1

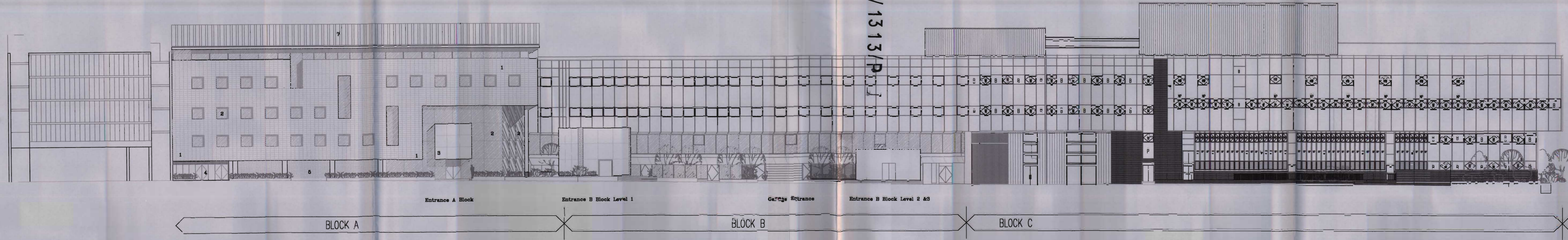
South Elevation / Section 009

A2 1=100 A4 1=200

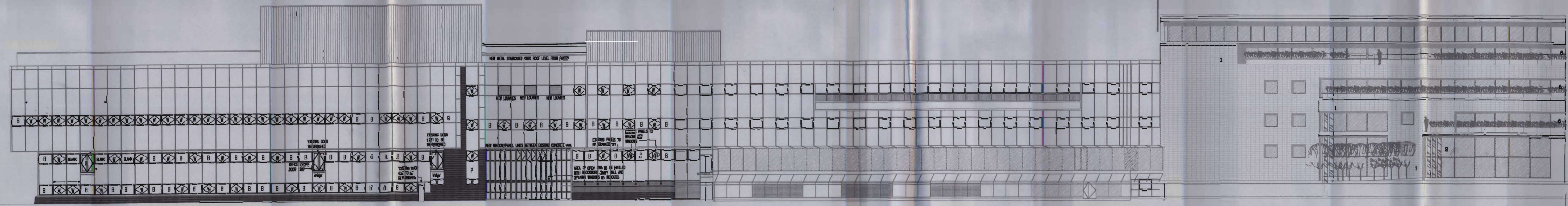
STPA/009/-

2003/1313/P

2003/1313/P



South West Elevation facing St Pancras Way



North East Elevation facing Regents Canal

- MATERIALS**
- 1. Terracotta Rain Screen
 - 2. Bronze tinted Solar Glass in Cream Aluminium Frames
 - 3. Back illuminated Translucent Box Canopy over SS Doors
 - 4. Steel Doors and Panels Powder Coated Colour Cream
 - 5. Glass Balustrades
 - 6. SS Balustrades to Terraces
 - 7. Corrugated Steel Roof and steel facias colour cream

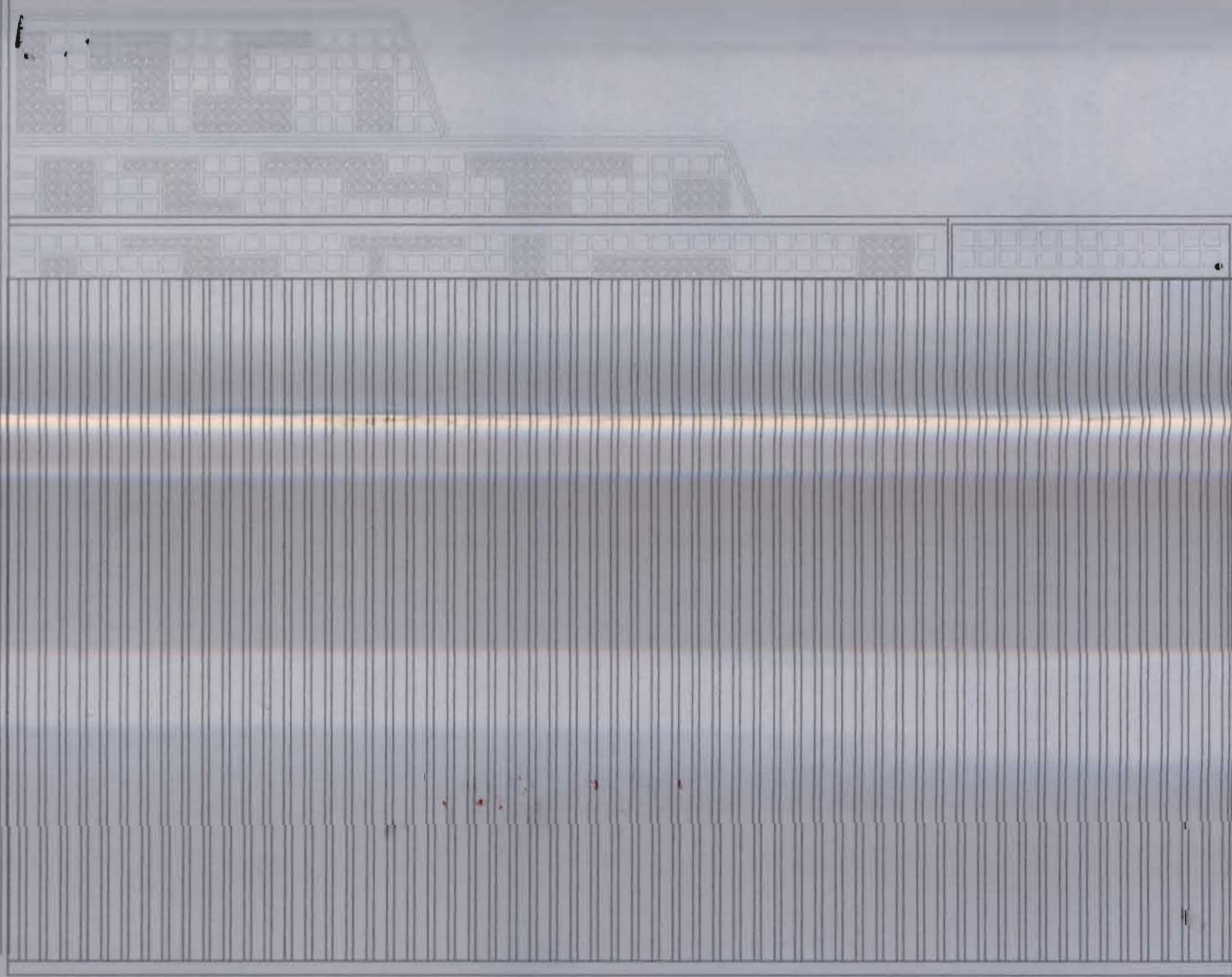
File Copy
 LONDON BOROUGH OF CAMBEN
 TOWN AND COUNTRY PLANNING ACTS
 - 4 MAR 2004
 PLANS APPROVED
 ON BEHALF OF THE COUNCIL

2003/1313/P

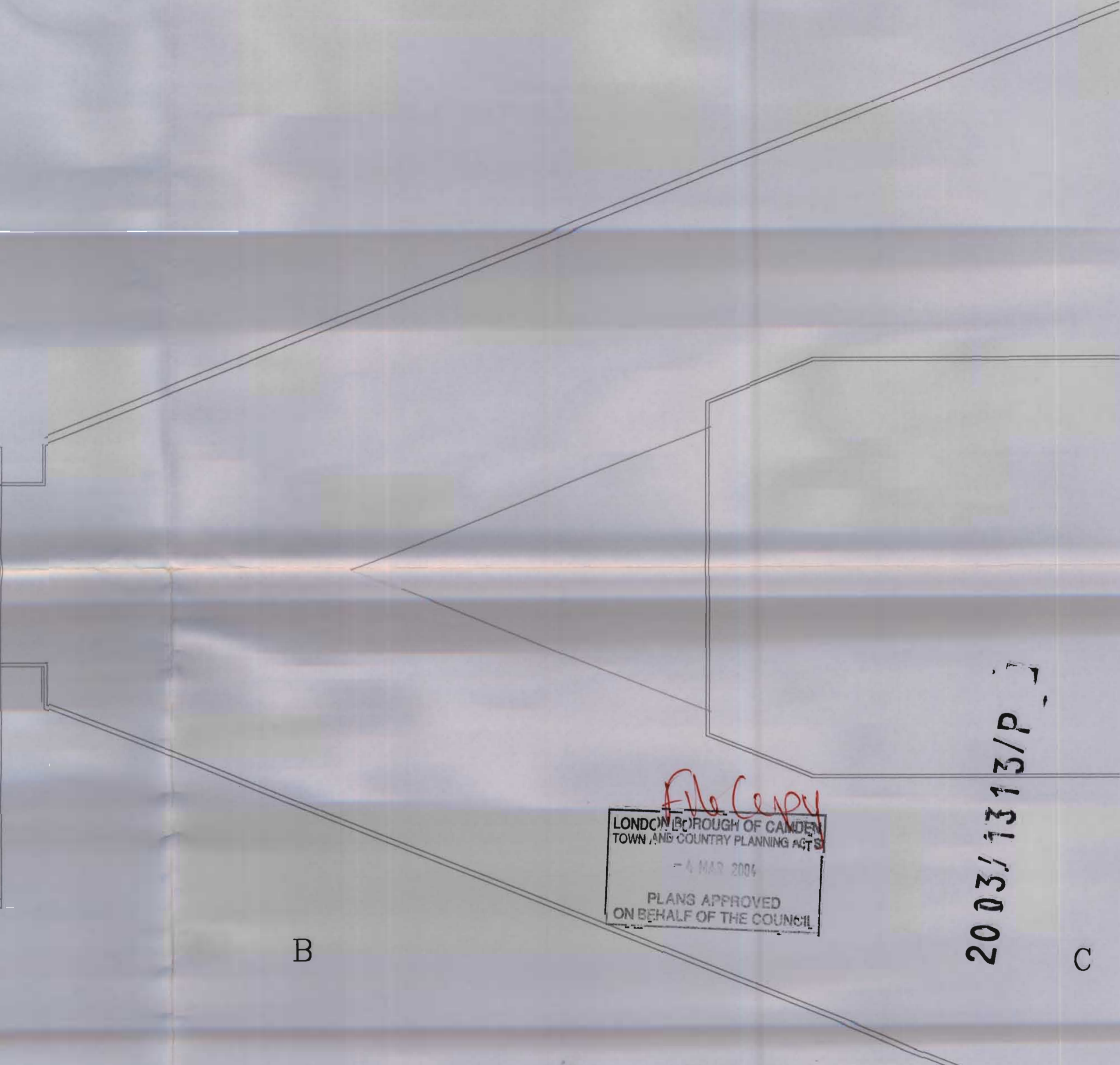
Polyhedron Architecture Limited
 Church Farm, Hemley, Woodbridge, Suffolk, IP12 4QA
 Tel 01478 736 478
 6 St Pancras Way, London, NW1
 Block A Extension
 North East and South West Elevations
 A2 1=100 A4 1=200

STPA/1/008/A

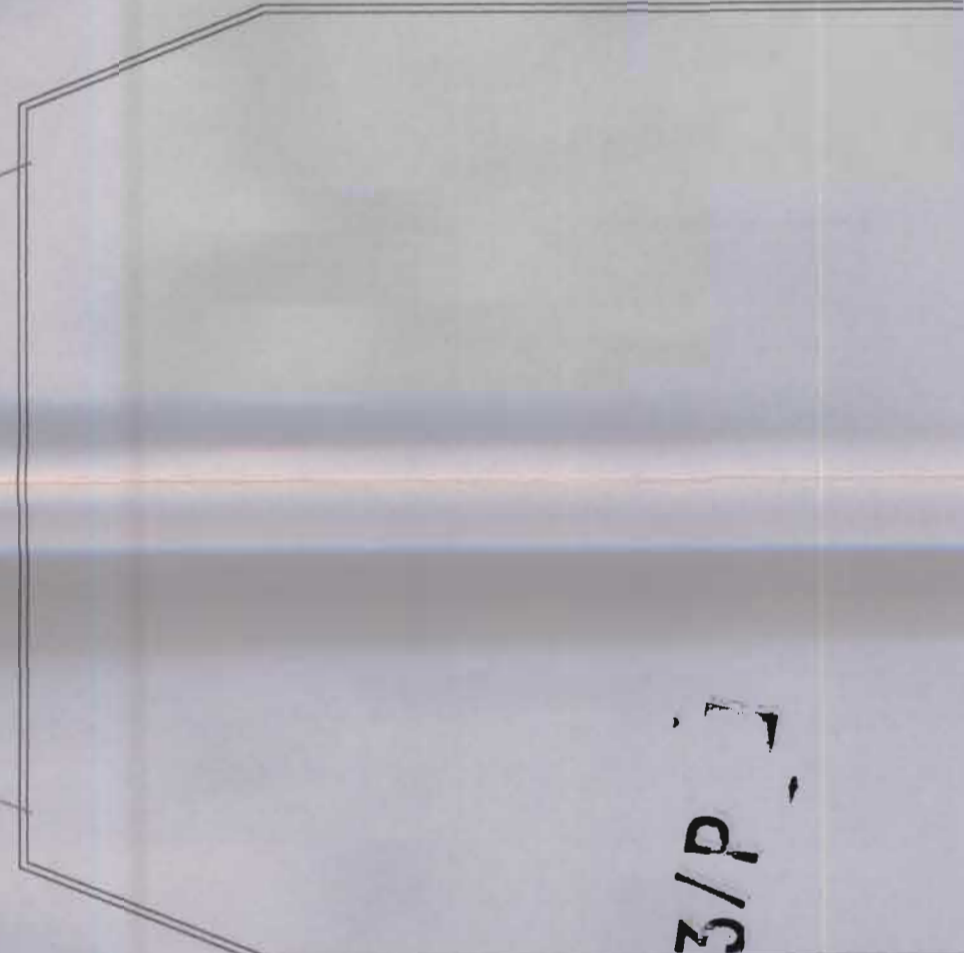
2003/1313/P



A



B

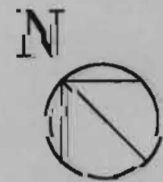


C

2003/1313/P

File Copy
 LONDON BOROUGH OF CAMDEN
 TOWN AND COUNTRY PLANNING ACTS
 - 4 MAR 2004
 PLANS APPROVED
 ON BEHALF OF THE COUNCIL

0 1 2 3 4 5 METERS 10



New Corrugated Steel Roof colour coated Cream

Polyhedron Architecture Limited

Church Farm, Hemley, Woodbridge, Suffolk IP12 4QA

Tel 01479 736 870

Canal Reach, 6 St Pancras Way, London, NW1

Blocks A and B

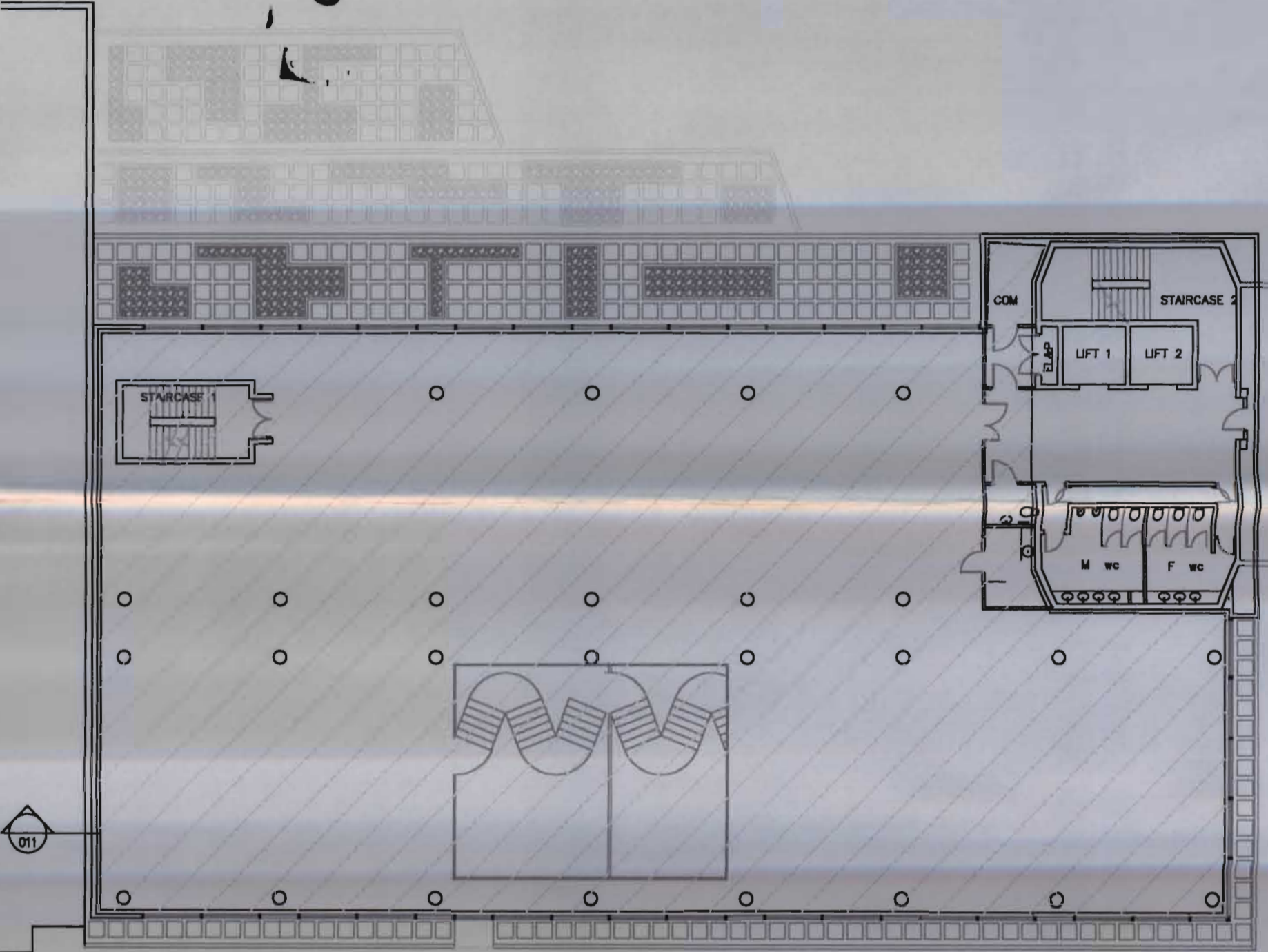
Roof Plan (Level B)

A2 1=200

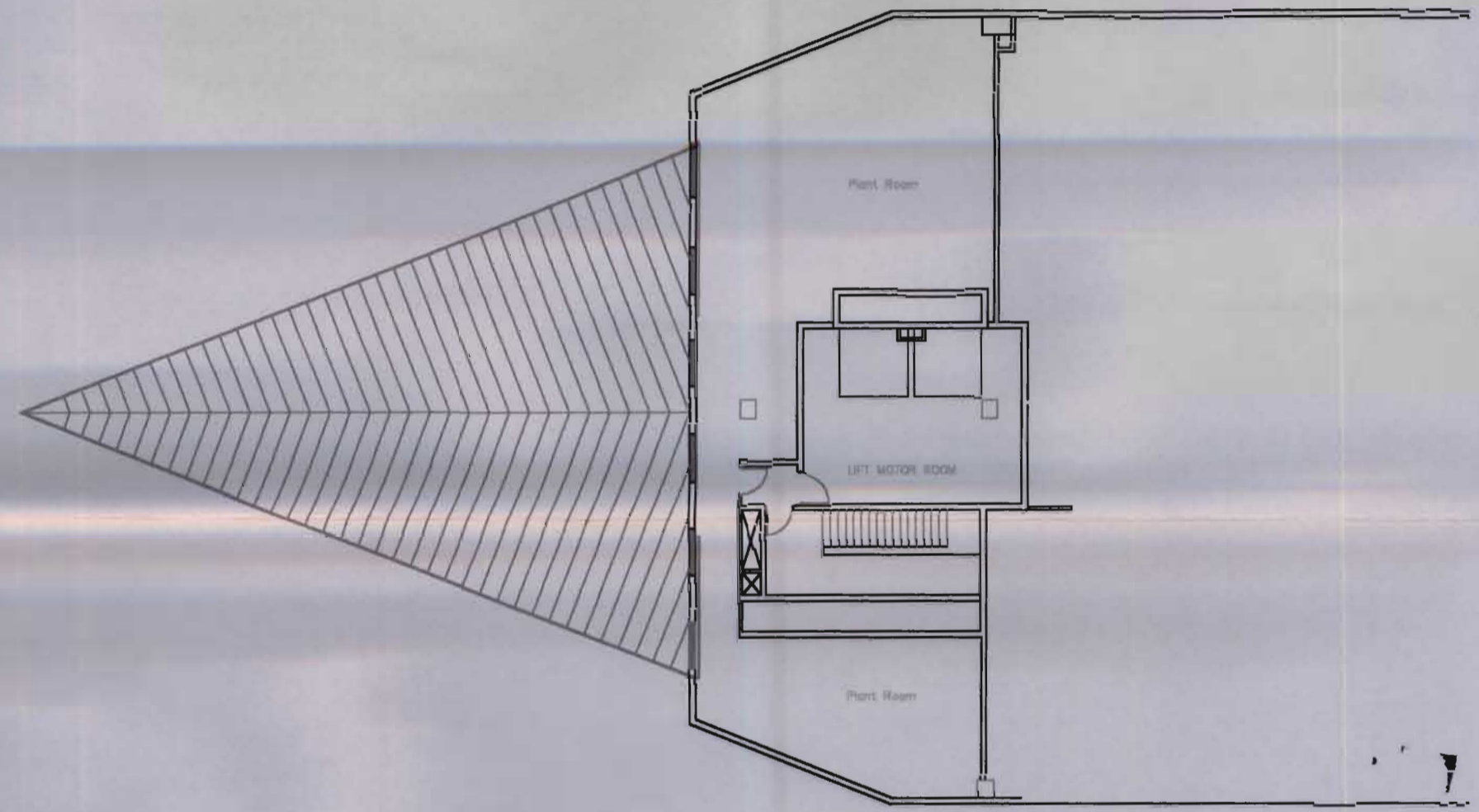
1/11/02

STPA/005/-

2003/1313/P



A

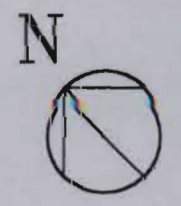
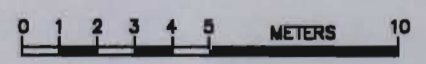


2003/1313/P

B

C

File Copy
 LONDON BOROUGH OF CAMDEN
 TOWN AND COUNTRY PLANNING ACTS
 - 4 MAR 2004
 PLANS APPROVED
 ON BEHALF OF THE COUNCIL



PROPOSED EXTENSION

Polyhedron Architecture Limited

Church Farm, Hemley, Woodbridge, Suffolk, IP12 4QA Tel 01473 736 478

Canal Reach, 6 St Pancras Way, London, NW1
Blocks A and B

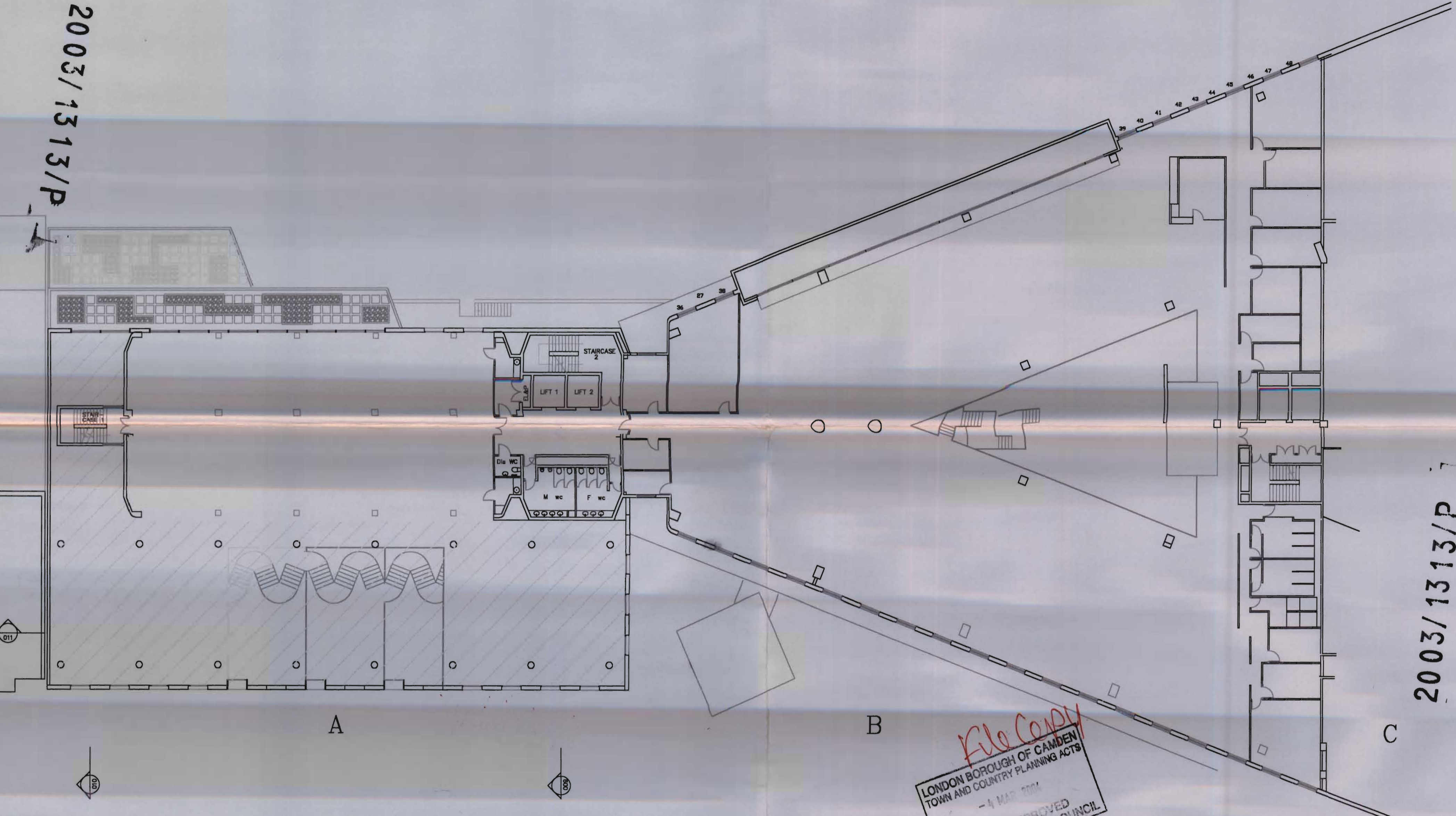
Fourth Floor Layout (Level 4)

A2 1=200

1/11/02
STPA/005/A

2003/1313/P

2003/1313/P

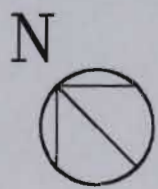


A

B

C

0 1 2 3 4 5 METERS 10



PROPOSED EXTENSION

File Copy
 LONDON BOROUGH OF CAMDEN
 TOWN AND COUNTRY PLANNING ACTS
 - 4 MAR 2004
 PLANS APPROVED
 ON BEHALF OF THE COUNCIL

Polyhedron Architecture Limited

Church Farm, Hemley, Woodbridge, Suffolk, IP12 4QA

Tel 01473 736 478

Canal Reach, 6 St Pancras Way, London, NW1

Blocks A and B

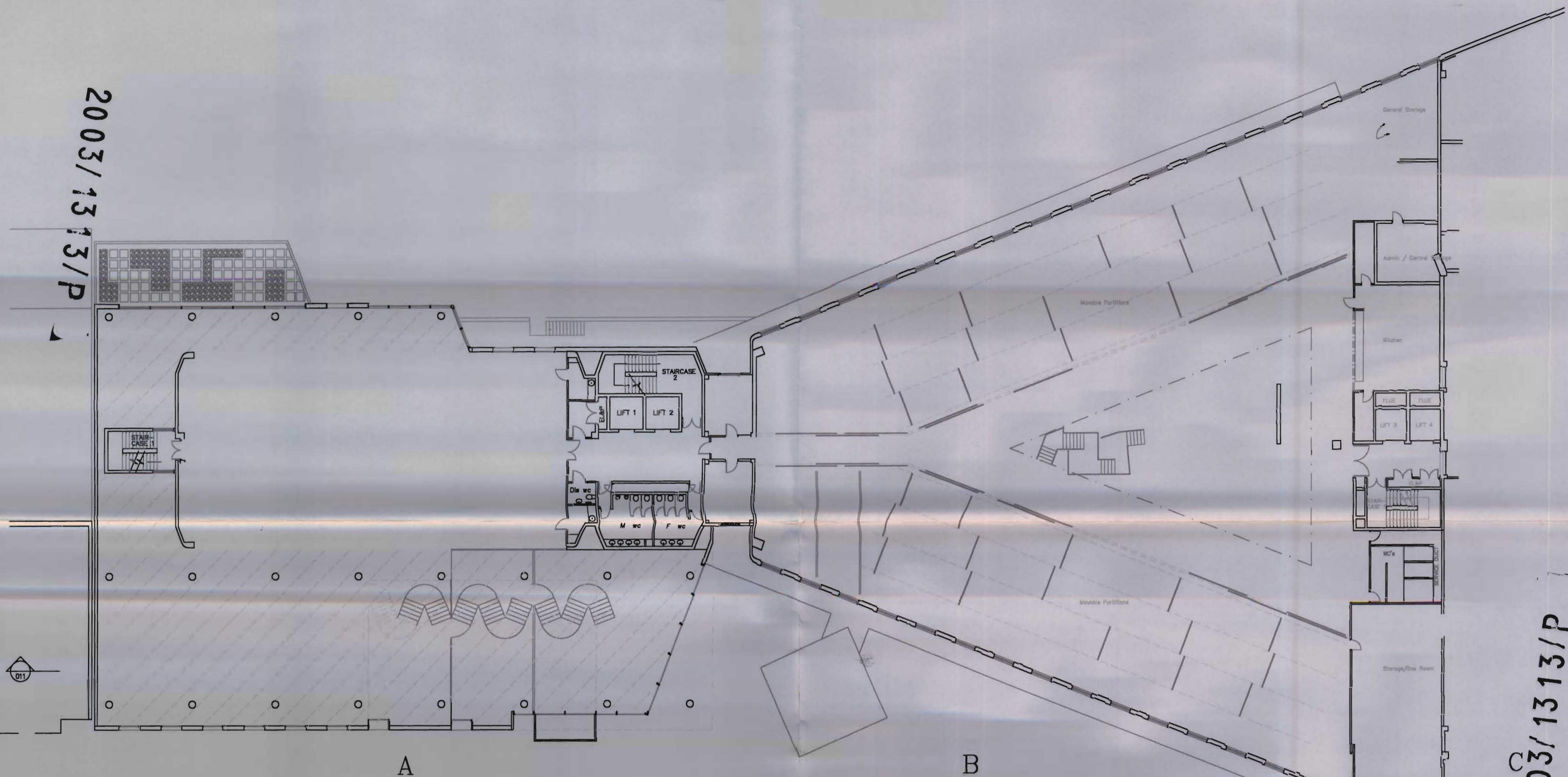
Third Floor Layout (Level 3)

A2 1=200

STPA/004/A

2003/1313/P

2003/1313/P



011

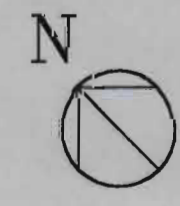
010

009

A

B

0 1 2 3 4 5 10 METERS



PROPOSED EXTENSION

File Copy
 LONDON BOROUGH OF CAMDEN
 TOWN AND COUNTRY PLANNING ACTS
 - 4 MAR 2004
 PLANS APPROVED
 ON BEHALF OF THE COUNCIL

Polyhedron Architecture Limited

Church Farm, Hemley, Woodbridge, Suffolk, IP12 4QA Tel 01473 736 478

Canal Reach, 6 St Pancras Way, London, NW1

Blocks A and B

Second Floor Layout (Level 2)

A2 1=100 A4 1=200

STPA/003/A

2003/1313/P

A

B

C

Regents Canal

New Birch Tree Planting along Ramp

VOID

Stair 2

Lift 1 Lift 2

Stair

M wc F wc

Staircase

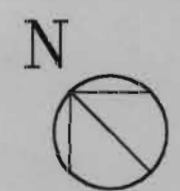
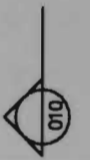
VOID

St Pancras Way

2003/1313/P

File Copy
LONDON BOROUGH OF CAMDEN
TOWN AND COUNTRY PLANNING ACTS
- 4 MAR 2004
PLANS APPROVED
ON BEHALF OF THE COUNCIL

0 1 2 3 4 5 METERS 10



PROPOSED EXTENSION

Polyhedron Architecture Limited

Church Farm, Hemley, Woodbridge, Suffolk, IP12 4QA

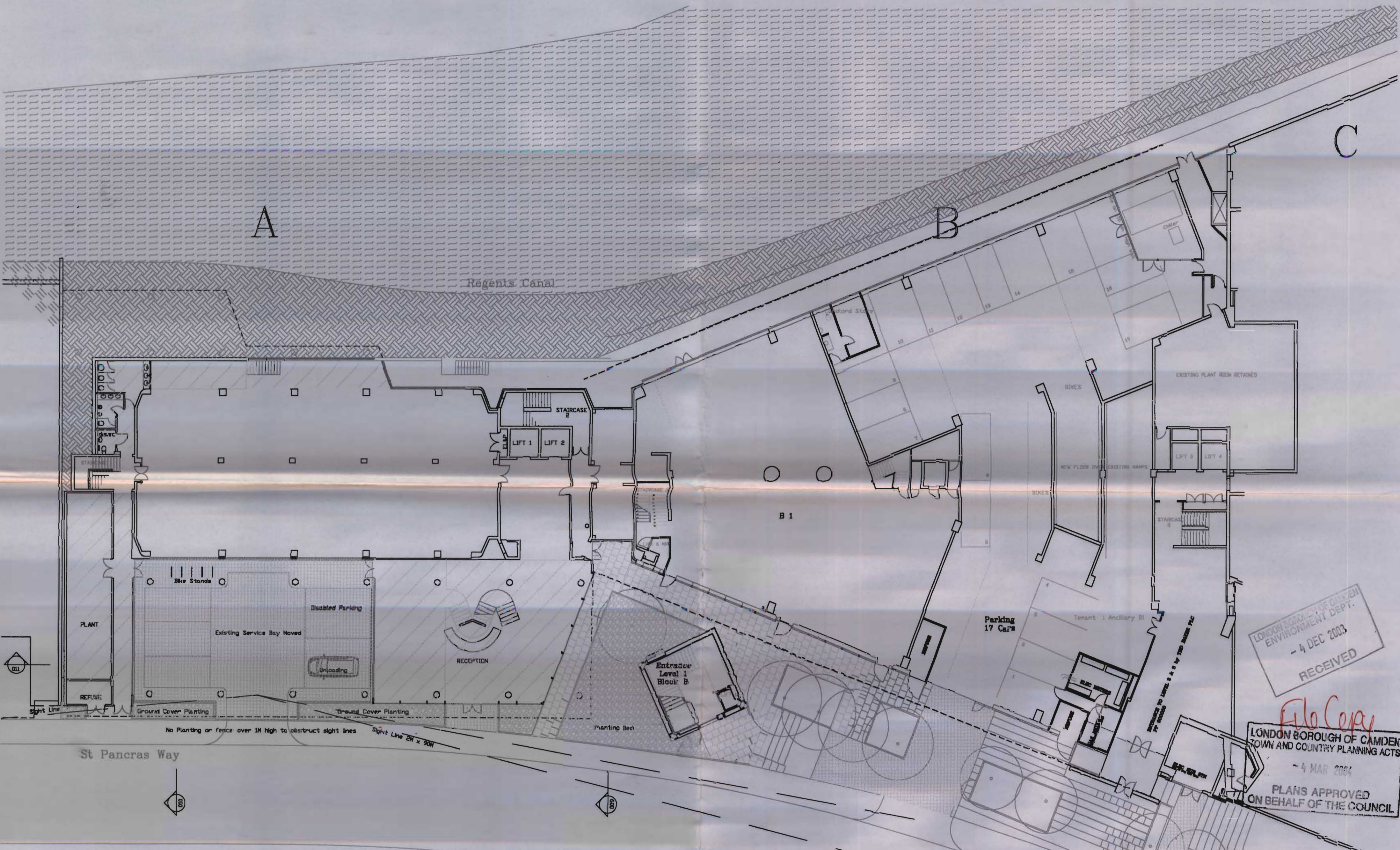
Tel 01473 736 478

Canal Reach, 6 St Pancras Way, London ,NW1

Blocks A and B
First Floor Layout (Level 1)

A2 1=100 A4 1=200

STPA/002/A



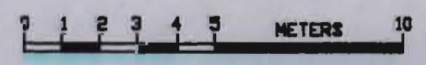
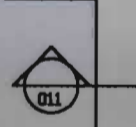
A

B

C

Regents Canal

St Pancras Way



PROPOSED EXTENSION

LONDON BOROUGH OF CAMDEN
TOWN AND COUNTRY PLANNING DEPT.
- 4 DEC 2003
RECEIVED

File Copy
LONDON BOROUGH OF CAMDEN
TOWN AND COUNTRY PLANNING ACTS
- 4 MAR 2004
PLANS APPROVED
ON BEHALF OF THE COUNCIL

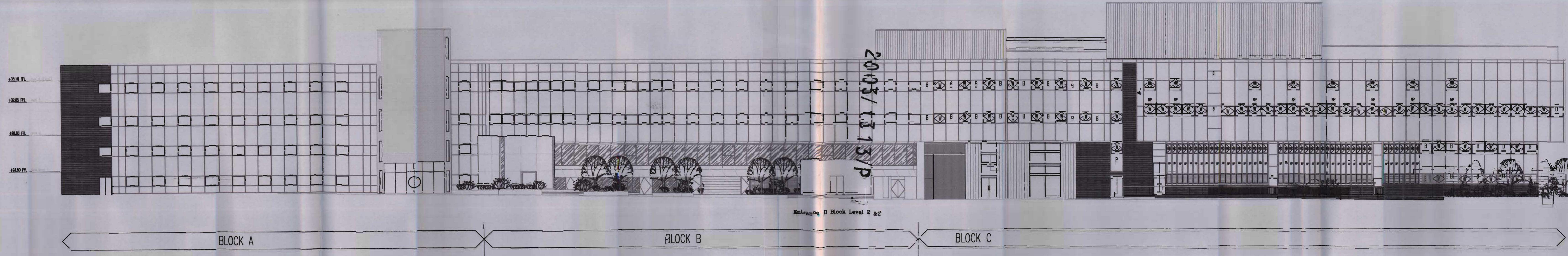
Polyhedron Architecture Limited
Church Farm, Hemley, Woodbridge, Suffolk, IP18 4QA Tel 01473 736 478
Canal Reach, 6 St Pancras Way, London, NW1
Blocks A and B
Ground Floor Layout (Level 0)

Rev C 01/12/03
Rev B 20/11/03

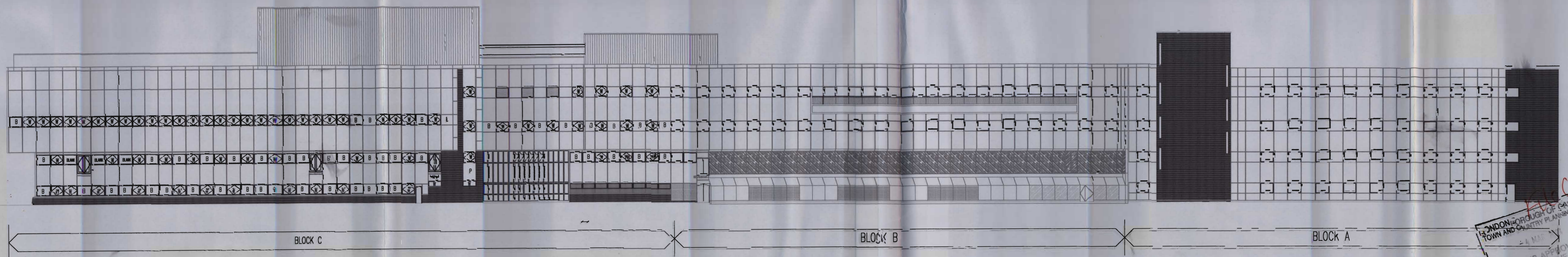
A2 1=200

STPA/001/C

2003/1313/P



Entrance B Block Level 2 &c



- +35.10 FFL Level 4 (Plant)
- +32.65 FFL Level 3
- +28.80 FFL Level 2
- +24.50 FFL New Level 1
- +22.00 FFL Level DA
- +21.00 FFL Level D

LONDON BOROUGH OF CAMDEN
TOWN AND COUNTRY PLANNING ACT 1990
PLANS APPROVED
ON BEHALF OF THE COUNCIL

Polyhedron Architecture Limited
Church Farm, Hemley, Woodbridge, Suffolk, IP12 4QA
Tel 01473 738 478
Canal Reach, 6 St Pancras Way, London, NW1
Existing Elevations

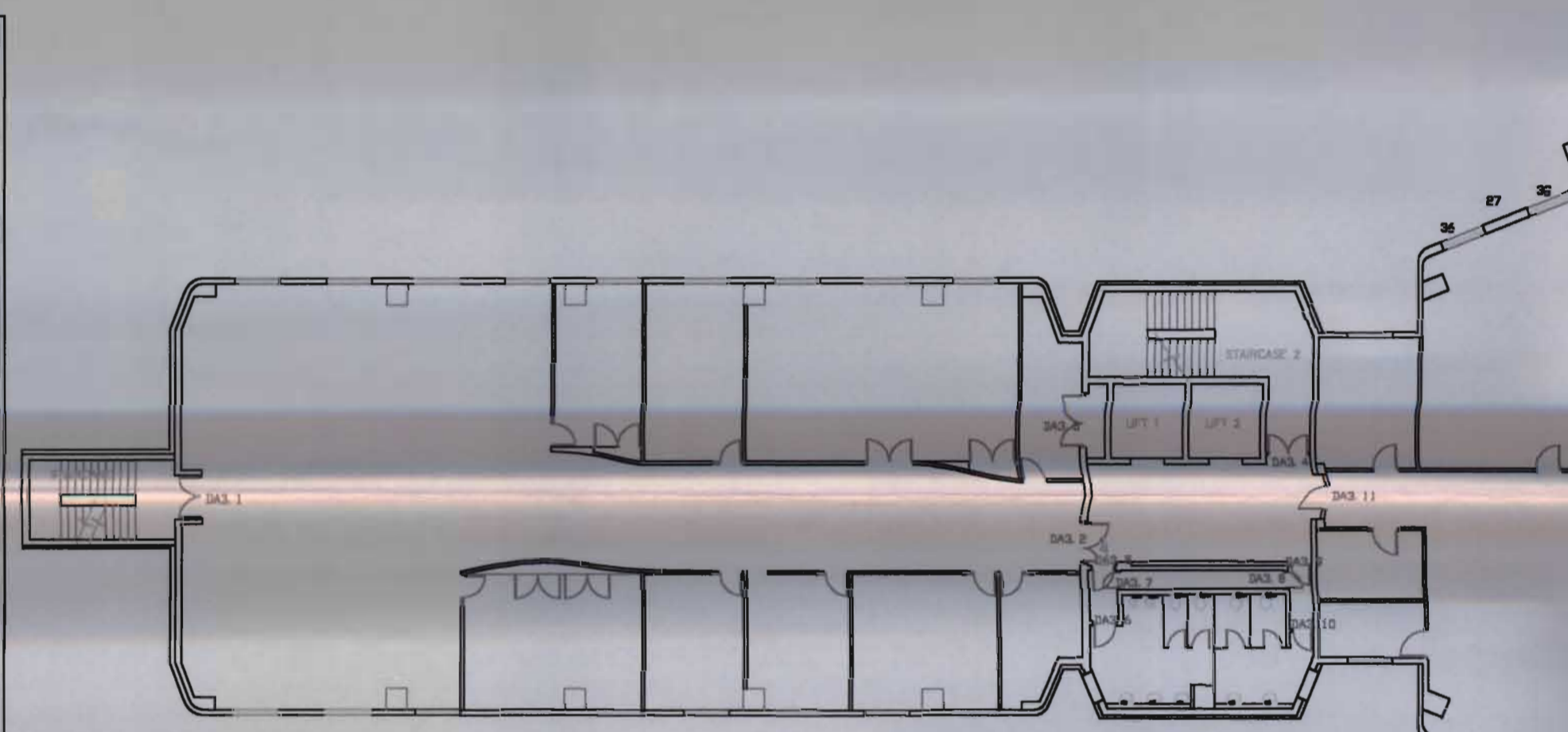
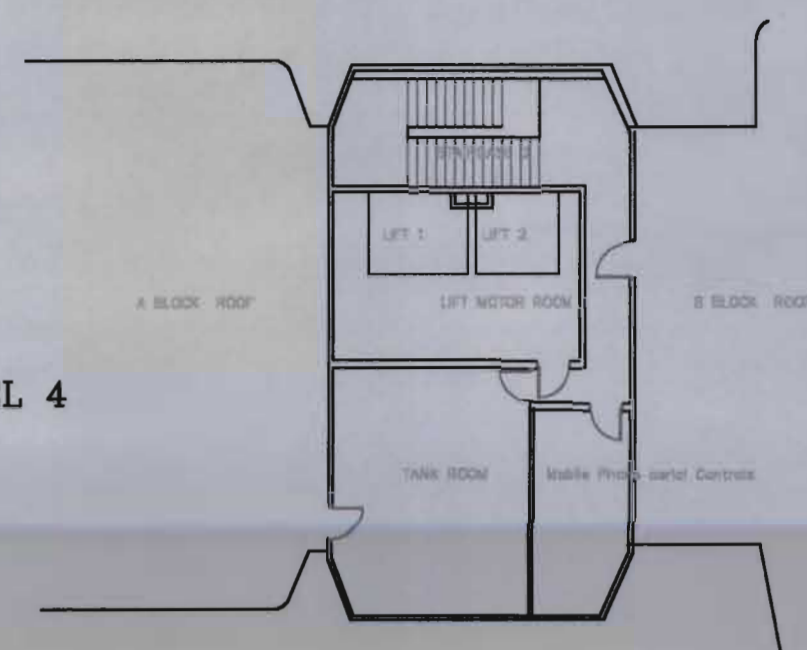
North East Elevation facing the Regent's Canal

A2 1=200 A4 1=400

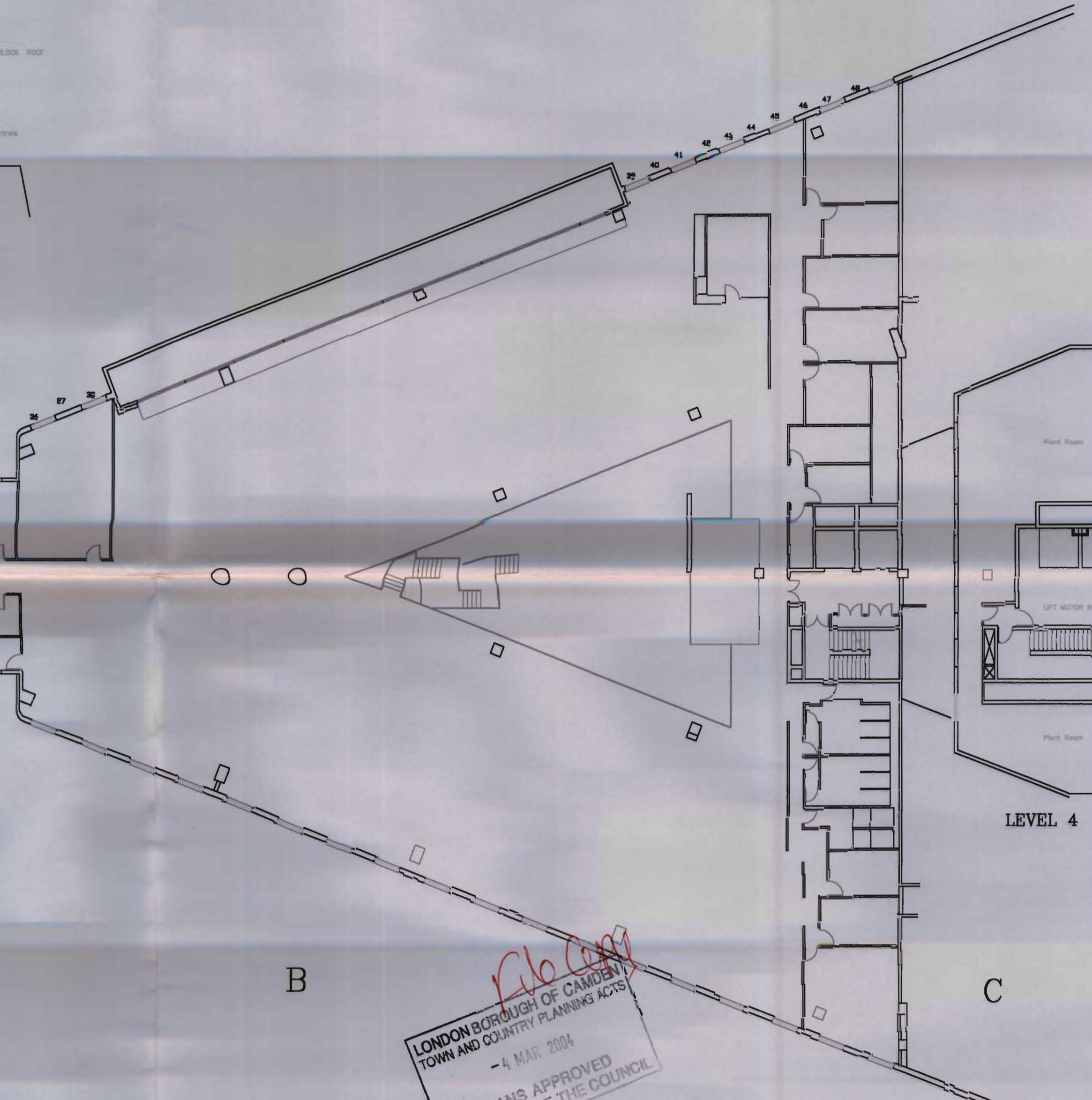
STP/S15/-

2003/1313/P

LEVEL 4

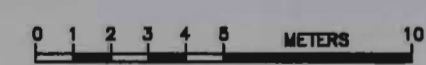


A



LEVEL 4

C



B

File Copy
 LONDON BOROUGH OF CAMDEN
 TOWN AND COUNTRY PLANNING ACTS
 - 4 MAR 2004
 PLANS APPROVED
 ON BEHALF OF THE COUNCIL

Polyhedron Architecture Limited

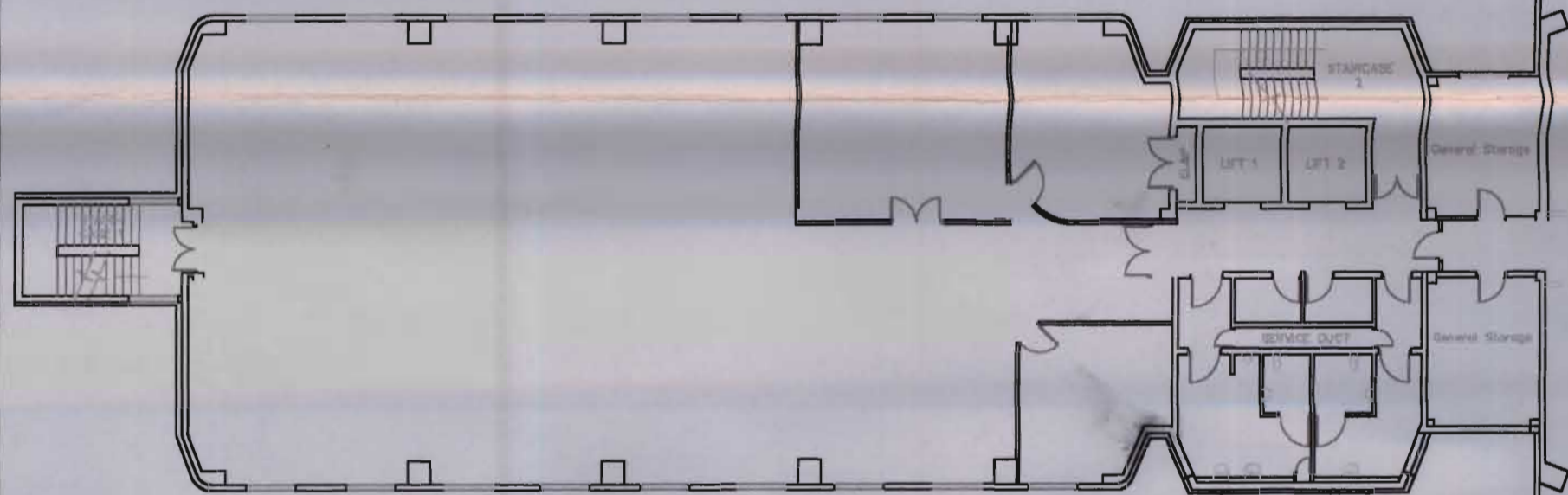
Church Farm, Henley, Woodbridge, Suffolk, IP12 4QA Tel 01473 736 478

Canal Reach, 6 St Pancras Way, London, NW1
 Blocks A and B as existing June 2003

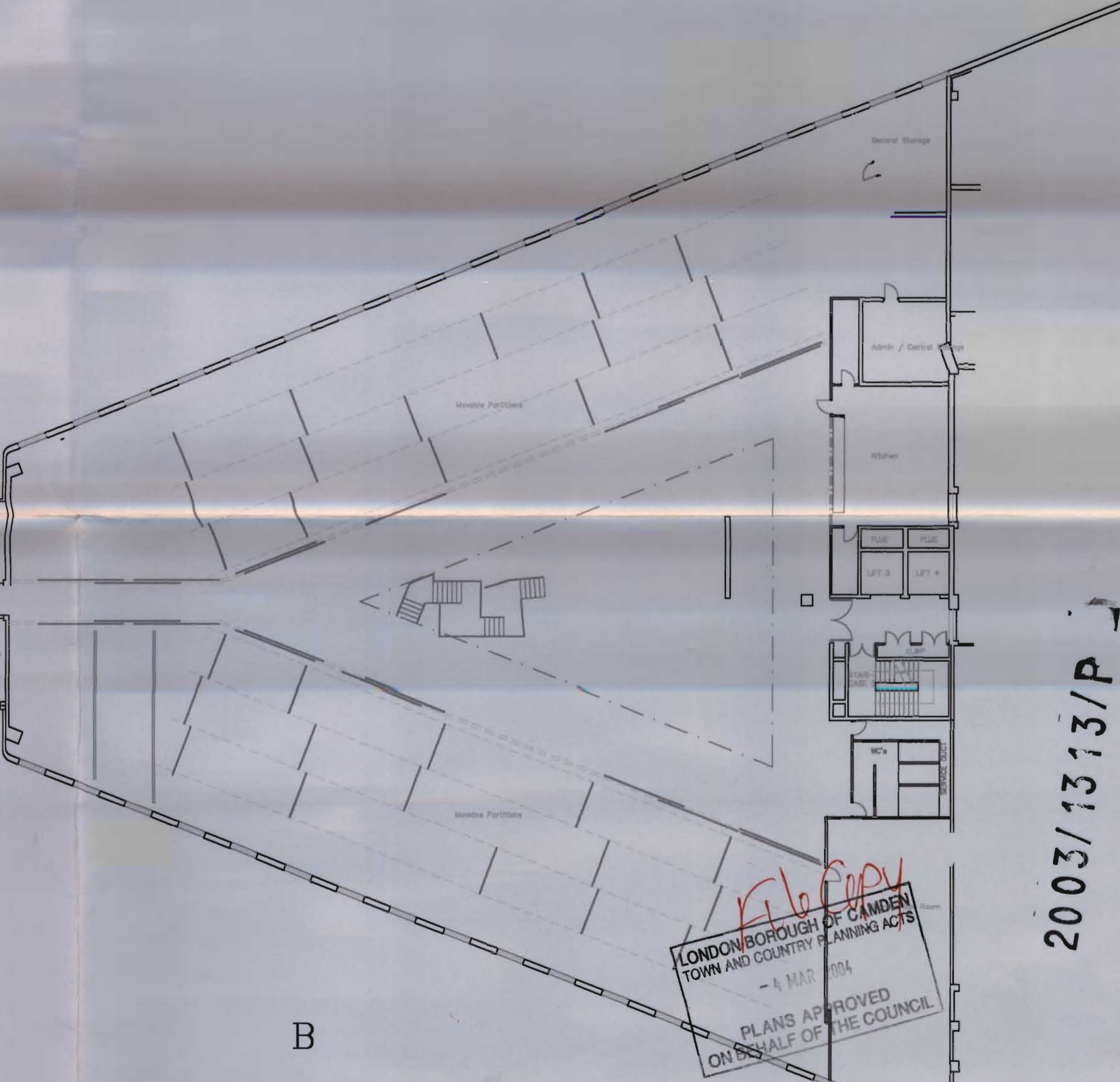
Third Floor Layout (Level 3) & Plant (Level 4)
 A2 1-200 1/11/02

STP/614/-

2003/1313/P



A



B

2003/1313/P

FILE COPY
 LONDON BOROUGH OF CAMDEN
 TOWN AND COUNTRY PLANNING ACTS
 - 4 MAR 2004
 PLANS APPROVED
 ON BEHALF OF THE COUNCIL



Polyhedron Architecture Limited

Church Farm, Hemley, Woodbridge, Suffolk, IP12 4QA

Tel 01473 736 478

Canal Reach, 6 St Pancras Way, London, NW1
Blocks A and B as existing June 2003

Second Floor Layout (Level 2)

A2 1=100 A4 1=200

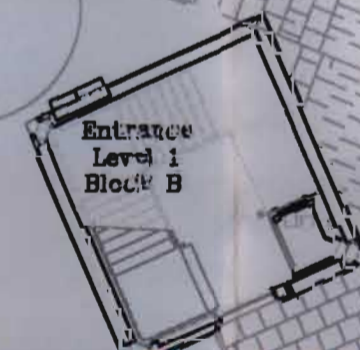
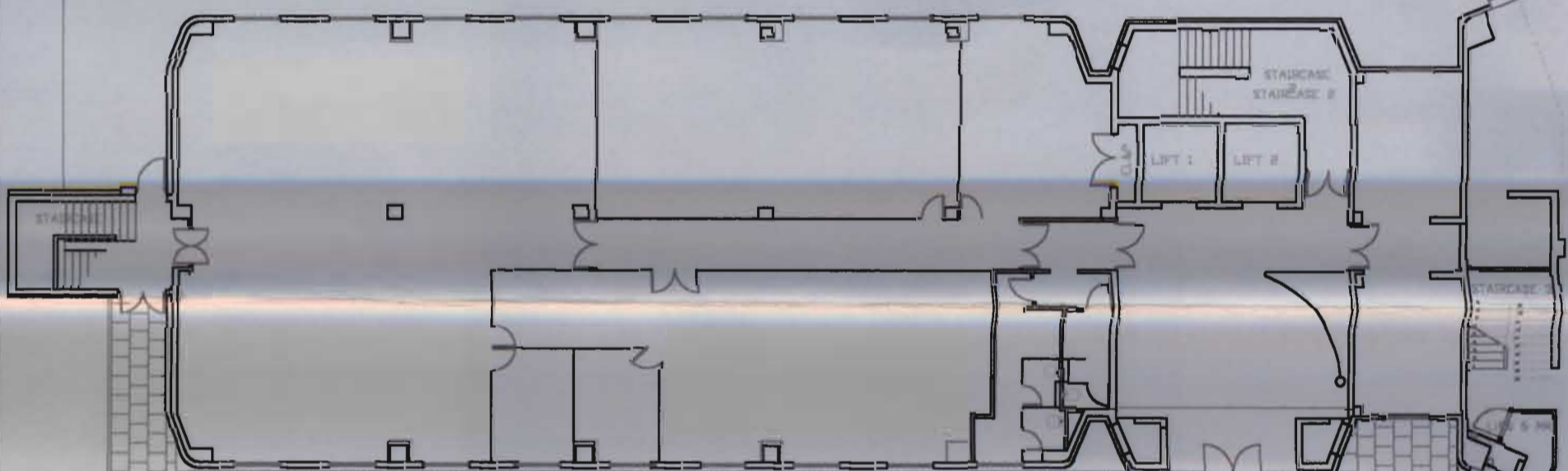
STP/613/-

Regents Canal

A

B

C



B 1

Parking 17 Cars

Tenant 1 Ancillary B1

EXISTING PLANT ROOM RETAINING

NEW FLOOR OVER EXISTING RAMPS

BIKES

LIFT 3 LIFT 4

STAIRCASE 2

STAIRCASE TO LEVEL 2 & 3 BY NEW RAMP FAC

File Copy

LONDON BOROUGH OF CAMDEN
TOWN AND COUNTRY PLANNING ACTS
4 MAR 2004
PLANS APPROVED
ON BEHALF OF THE COUNCIL

St Pancras Way

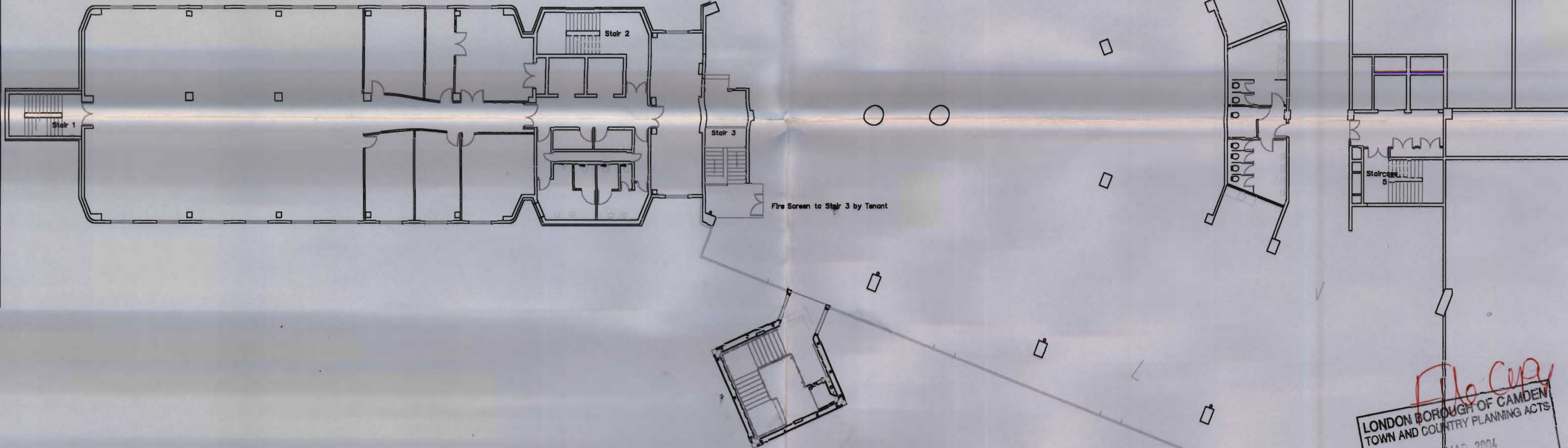
0 1 2 3 4 5 METERS 10

Polyhedron Architecture Limited
Church Farm, Hertley, Woodbridge, Suffolk, IP12 4QA Tel 01473 736 478
Canal Reach, 6 St Pancras Way, London, NW1
Blocks A and B existing June 2003
Ground Floor Layout (Level 0)

A2 1-204

STP/611/A

2003/1313/P



File Copy
 LONDON BOROUGH OF CAMDEN
 TOWN AND COUNTRY PLANNING ACTS
 - 4 MAR 2004
 PLANS APPROVED
 ON BEHALF OF THE COUNCIL

2003/1313/P

Polyhedron Architecture Limited

Church Farm, Hemley, Woodbridge, Suffolk, IP12 4QA

Tel 01473 736 478

Canal Reach, 6 St Pancras Way, London, NW1

Blocks A and B existing June 2003

First Floor Layout (Level 1)

A2 1=100 A4 1=200

STP/612/B