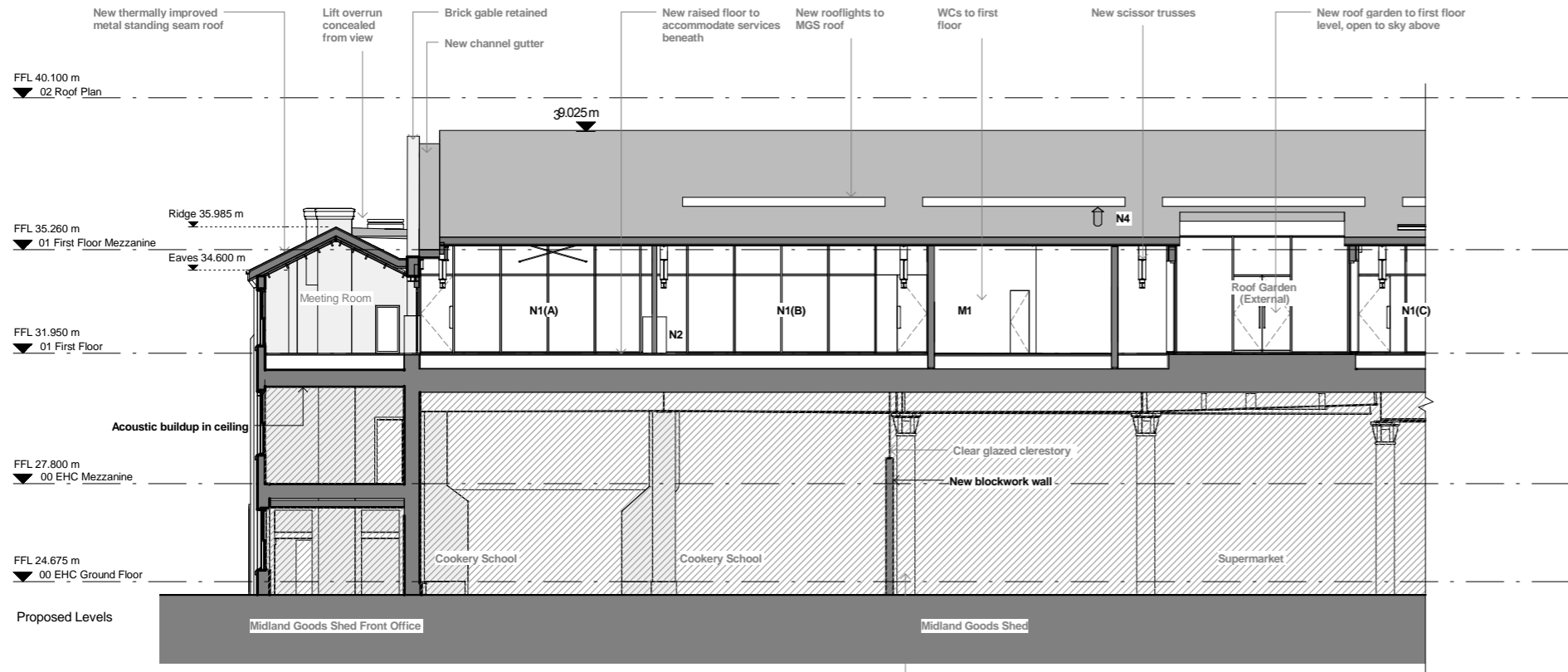


Section DD Tile A

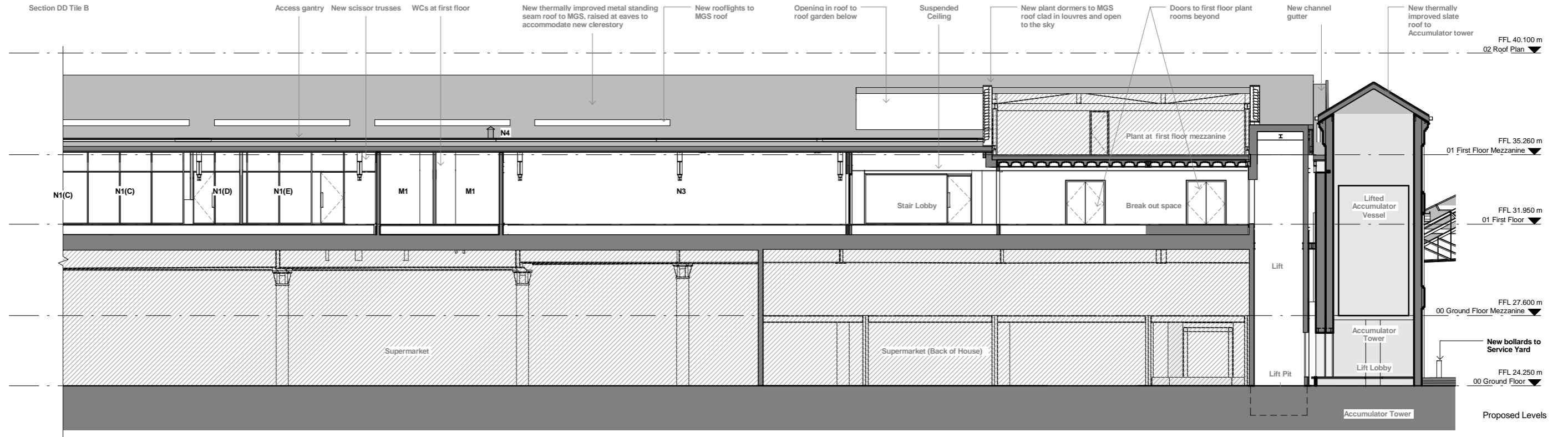


FIT-OUT DRAWING LEGEND:

Please note - for clarity, notes on the drawing are as previously approved, and new notes & information are detailed below:

M1. WC cores reformatted to increase provision
N1. Glazed walls to facilitate programming spaces along east and west walls:
A. AV gallery & admin room
B. Small seminar room
C. Small seminar room
D. Store to support pantry
E. Pantry
N2. Low level cabinet for M&E equipment
N3. Large open plan event space
N4. Ventilation cowls to WCs

Section DD Tile B



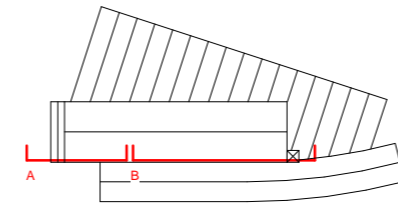
Revisions	By	Chk	Revisions	By	Chk
1. 150803			Draft for Information	MH	EM
A. 150807			Draft for Information	MH	EM
B. 150825			For Approval	CH	EM
C. 150827			For Approval	CH	EM

By	Chk	Revisions
MH	EM	
MH	EM	
CH	EM	
CH	EM	

Notes

1. These proposals relate only to the parts of the building and canopy to be occupied initially by Guardian News & Media; they do not relate to those hatched areas to be occupied initially by Waitrose pursuant to Reserved Matters approval reference 2014/1433/P and Listed Building Consent reference 2014/1436/L.

2. Drawing to be read in conjunction with 0613_P_222 and 1314_PC_222



Bennetts Associates Architects
 1 Rawstorne Place London EC1V 7NL
 T +44 (0) 20 7520 3300 F +44 (0) 20 7520 3333
 E mail@bennettsassociates.com
 For Bennetts Associates' electronic information issue disclaimer -
www.bennettsassociates.com/information/disclaimer/

Project
Guardian Space
 Guardian News & Media

Project No. 1314

Drawing Title
 For Approval
 Section DD Looking West
 Proposed

Drawing Number
 1314_P_222

Revision
 C

Scale @ A3
 1:200

Scale @ A1
 1:100

Revision Date
 150827

YY MM DD