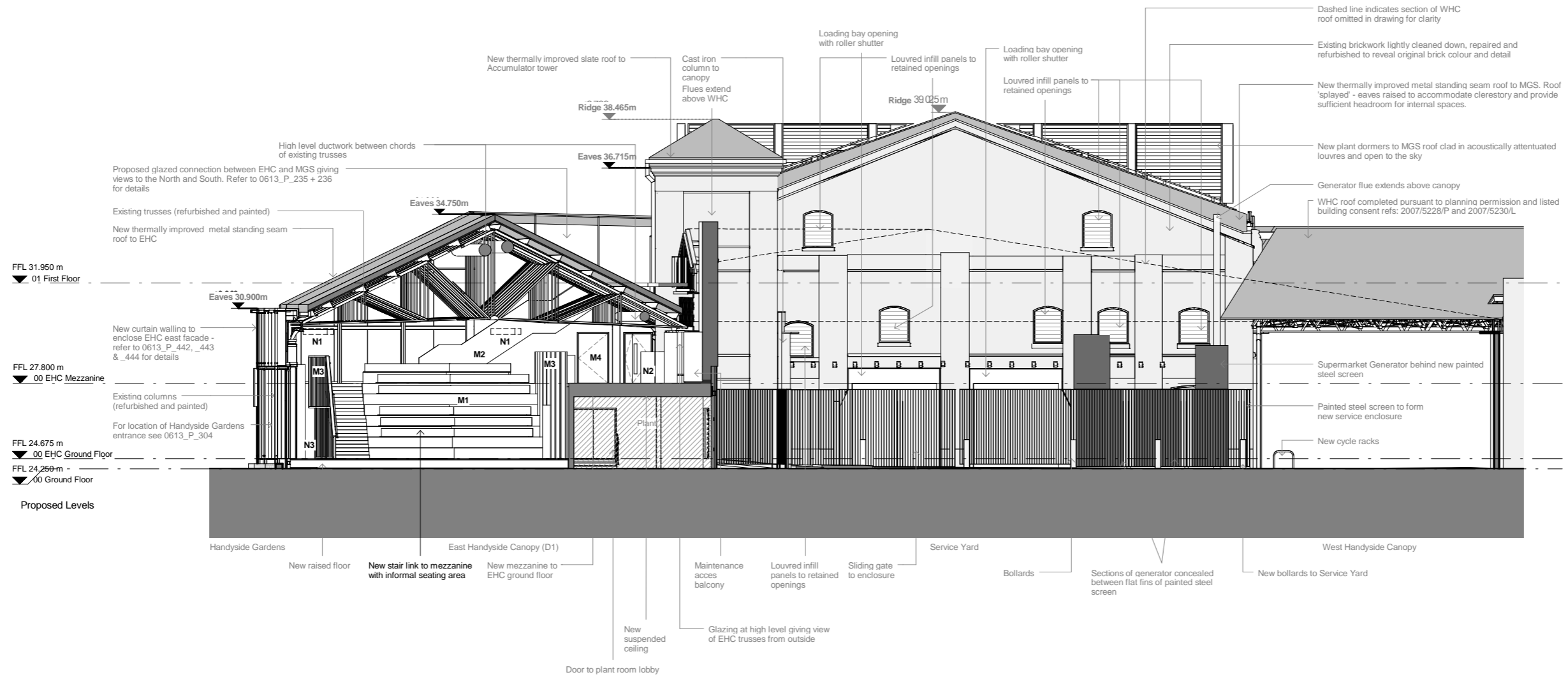


FIT-OUT DRAWING LEGEND:

Please note - for clarity, notes on the drawing are as-previously approved, and new notes & information are detailed below:

- M1. Setting-out of feature stair adjusted to improve audience viewing angles
- M2. New stair between mezzanine & first floor - one flight omitted to mitigate impact on existing structure
- M3. Timber framework & lining added to mezzanine wall to support acoustic panels & display material
- M4. Stair enclosed with wall & door in lieu of fire curtain to provide dedicated back of house circulation
- N1. Indicative position of AV trusses above
- N2. Location of diffuser bin indicated
- N3. Built in joinery to inside face of EHC facade panels to provide storage, surfaces for display, acoustic panels and 'pop-up' furniture. Joinery sits within outline of facade panel and is designed so as not to impact the heritage strategy for the east facade.



Revisions	By	Chk	Revisions	By	Chk
1. 150803			Draft for Information	MH	EM
A 150807			Draft for Information	MH	EM
B 150825			For Approval	CH	EM
C 150827			For Approval	CH	EM

Notes

1. These proposals relate only to the parts of the building and canopy to be occupied initially by Guardian News & Media; they do not relate to those hatched areas to be occupied initially by Waitrose pursuant to Reserved Matters approval reference 2014/1433/P and Listed Building Consent reference 2014/1436/L.
2. Drawing to be read in conjunction with 0613_P_212 and 1314_PC_212

Bennetts Associates Architects
 1 Rawstone Place London EC1V 7NL
 T +44 (0) 20 7520 3300 F +44 (0) 20 7520 3333
 E mail@bennettsassociates.com

Project
Guardian Space
 Guardian News & Media

Project No. 1314

Drawing Title
 For Approval
 Section BB looking South
 Proposed

Drawing Number
 1314_P_212

Revision
 C

Revision Date
 150827

Scale @ A3
1 : 200

Scale @ A1
1 : 100

YY MM DD