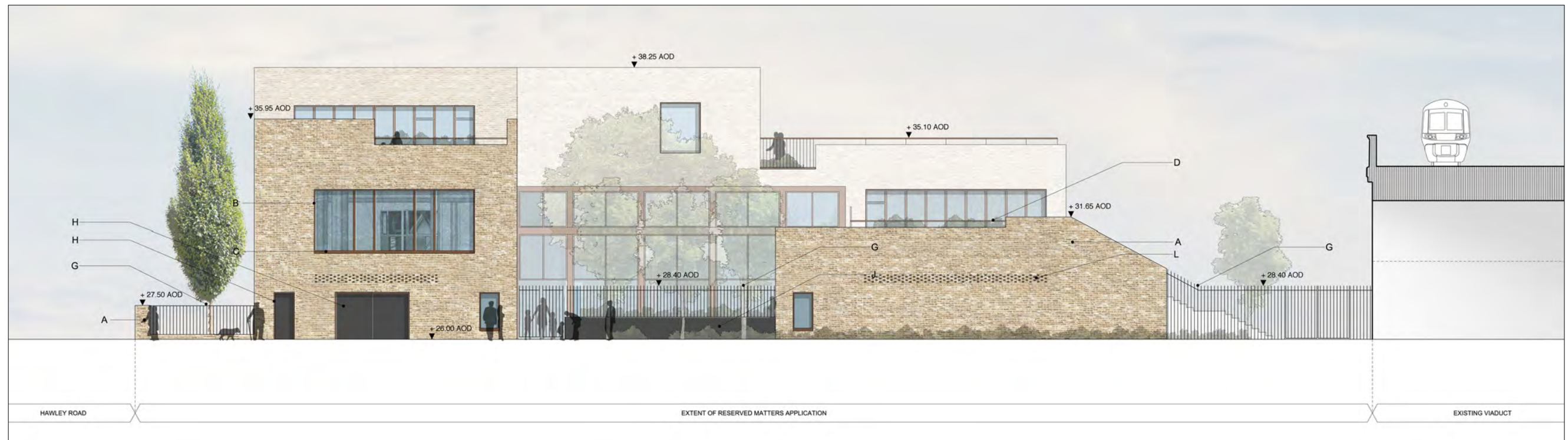


Hawley School - west elevation



Approved planning scheme - drawing 12160_P_(00)_302

Scale 1:200



Proposed scheme - drawing 12160_P_(00)_302_rev. P01

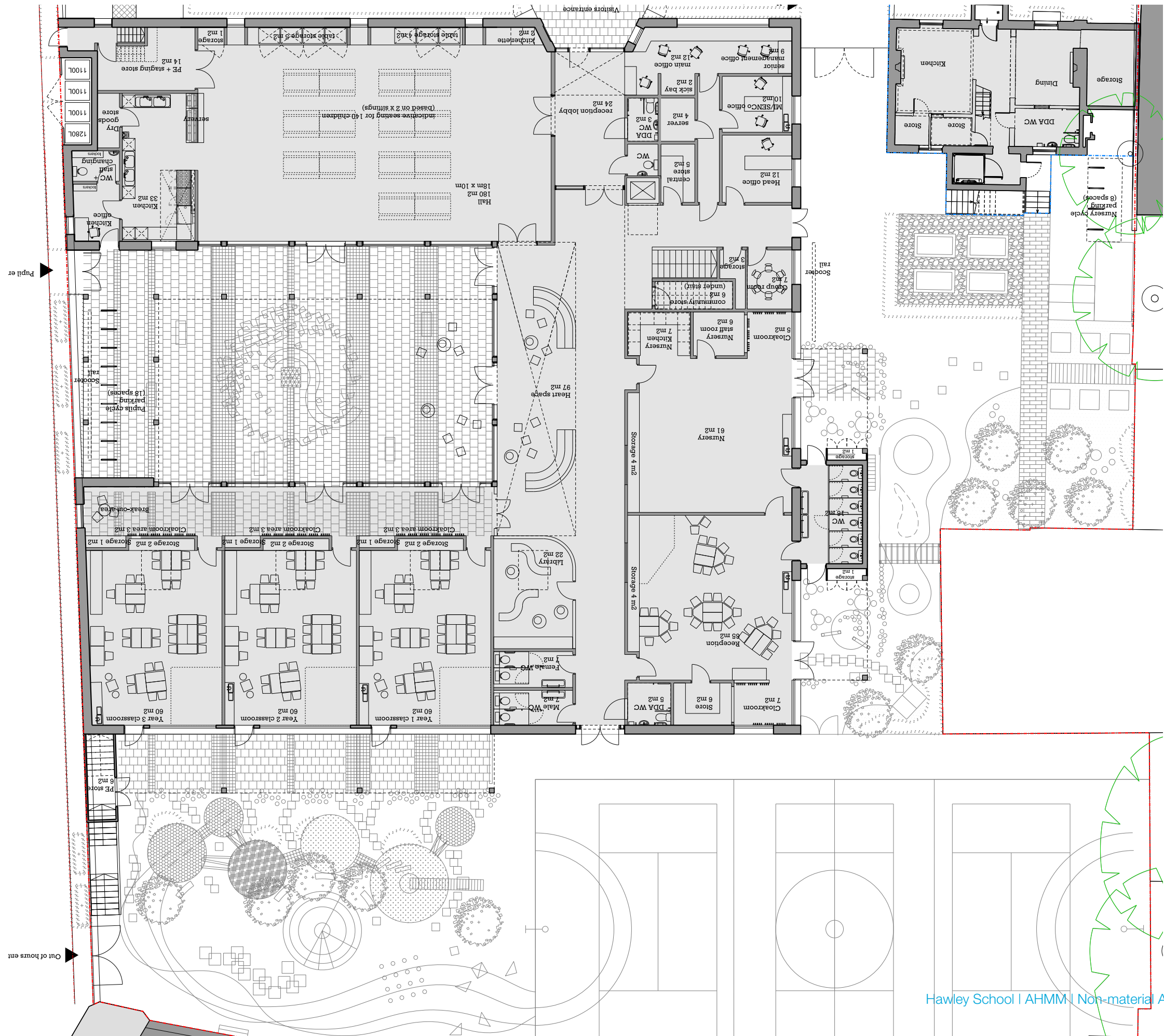
Scale 1:200

Revisions

- A** Parapet increased in height by 175mm further to detailed design to incorporate robust parapet detail, roof insulation and structural slab and required headroom above escape stair.
- B** Double-door introduced and boundary wall extended to accommodate re-located Network Rail / DNO enclosure.

Hawley School - ground floor plan

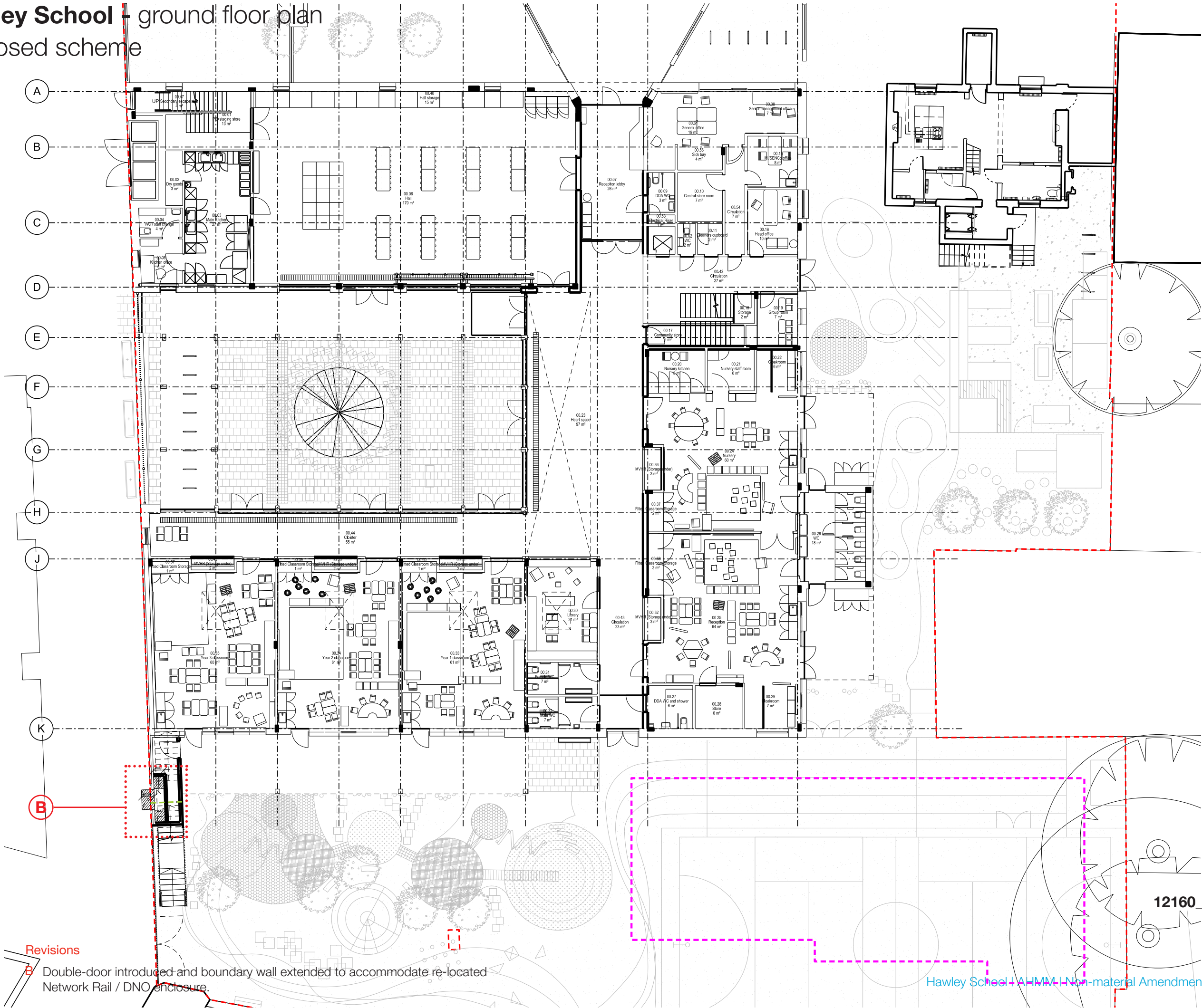
Approved planning scheme



12160_P_(00)_100

Scale 1:200

Hawley School - ground floor plan
proposed scheme



12160_P_(00)_100_Rev_P01
Scale 1:200

Revisions

B Double-door introduced and boundary wall extended to accommodate re-located Network Rail / DNO enclosure.

Hawley School - north elevation



Approved planning scheme - drawing 12160_P_(00)_300 Scale 1:200



Proposed scheme - drawing 12160_P_(00)_300_rev. P01 Scale 1:200

- Revisions**
- A** Parapet increased in height by 175mm further to detailed design to incorporate robust parapet detail, roof insulation and structural slab and required headroom above escape stair.
 - C** Fire escape pop-up increased in width by 900mm further to detailed design and re-configuration of fire escape stair to satisfy Building Bulletin requirements.

Hawley School - key views

Approved planning scheme from Design and Access Statement: April 2014.



View from Kentish Town Road

Approved planning scheme



View from Castlehaven Road

Approved planning scheme

Hawley School - key views

Proposed scheme



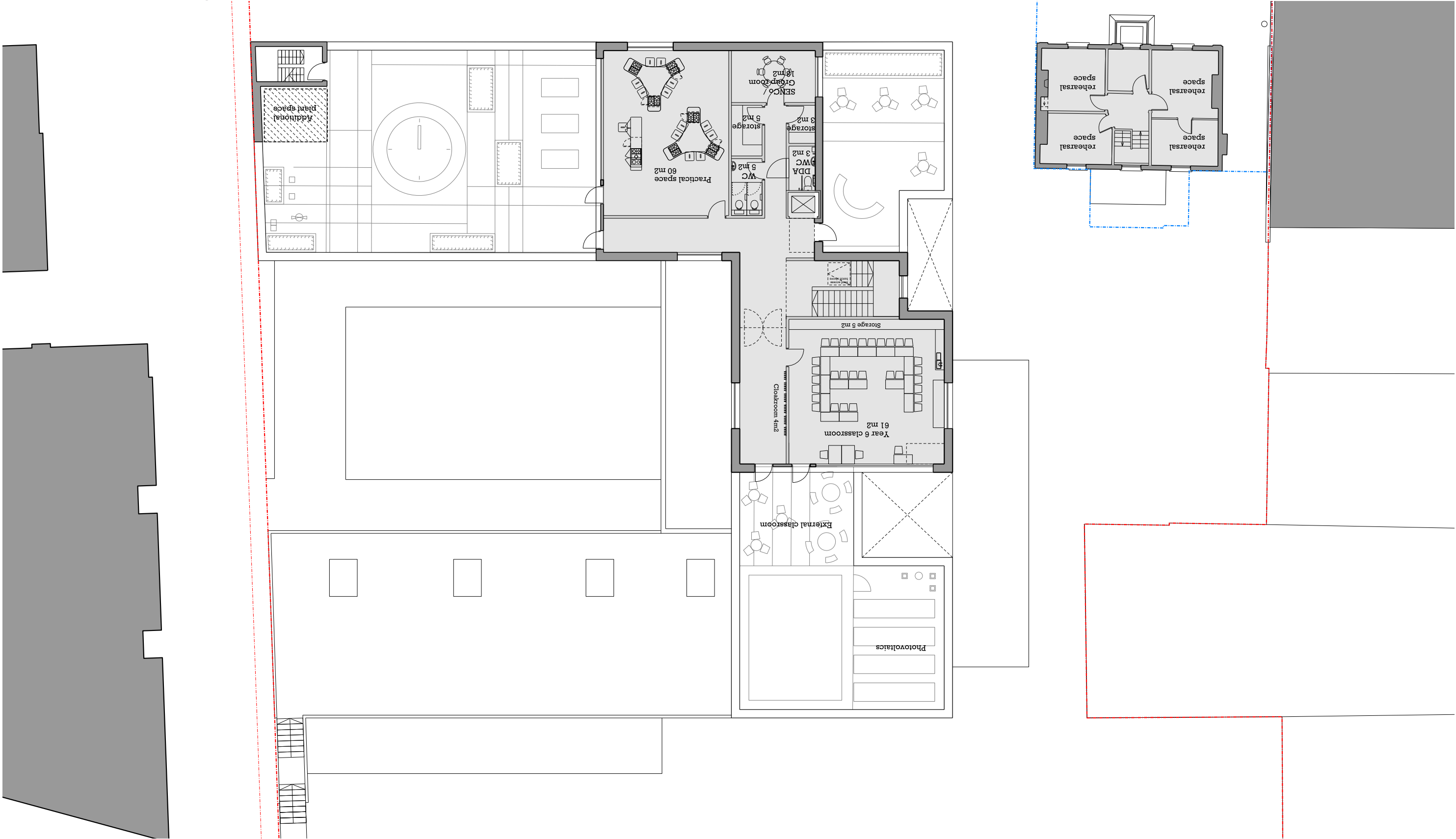
View from Kentish Town Road
Proposed scheme



View from Castlehaven Road
Proposed scheme

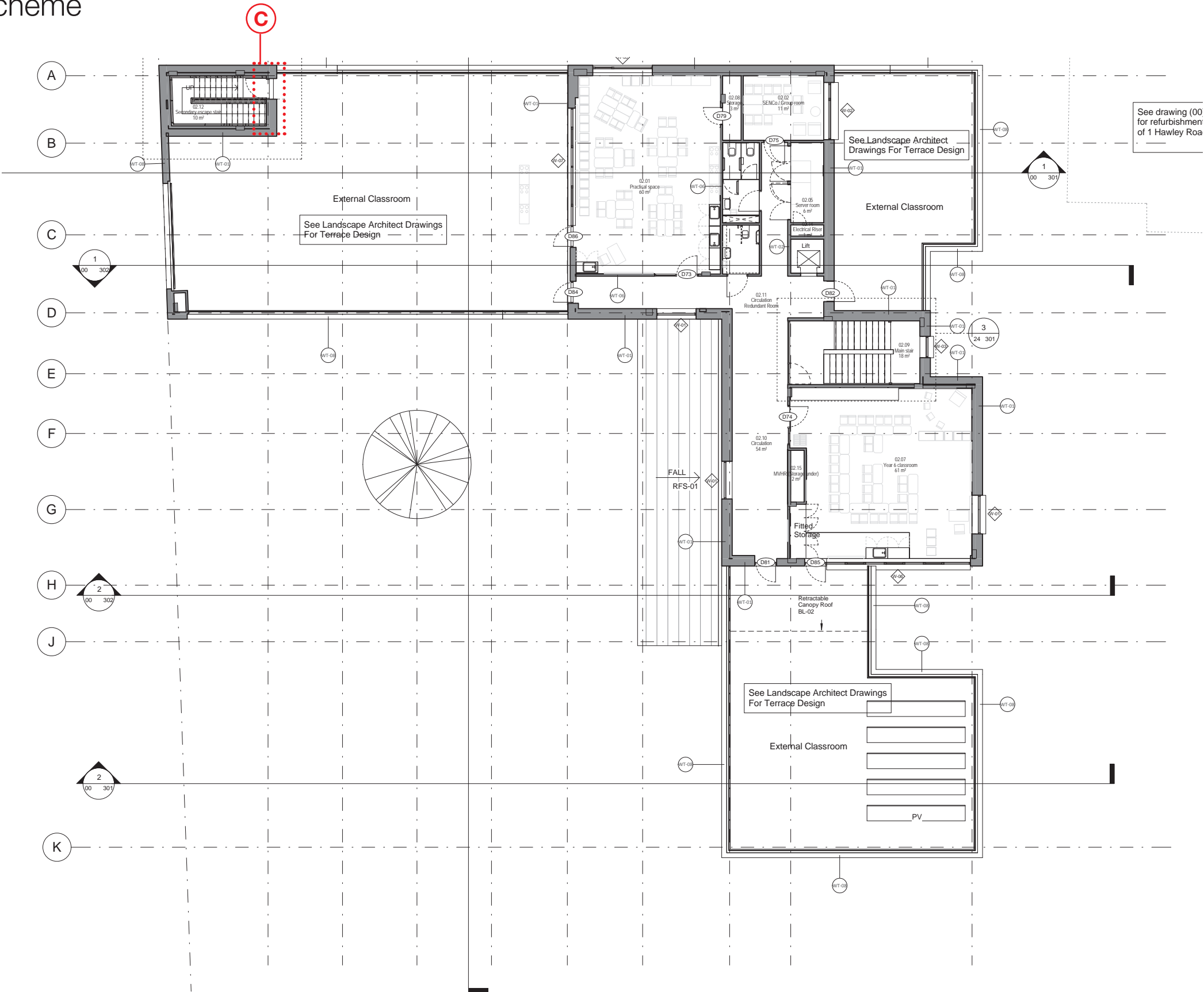
Hawley School - second floor plan

Approved planning scheme



12160_P_(00)_102
Scale 1:200

Hawley School - second floor plan
Proposed scheme



Revisions

C Fire escape pop-up increased in width by 900mm further to detailed design and re-configuration of fire escape stair to satisfy Building Bulletin requirements.

12160_P_(00)_102_Rev_P01
Scale 1:200