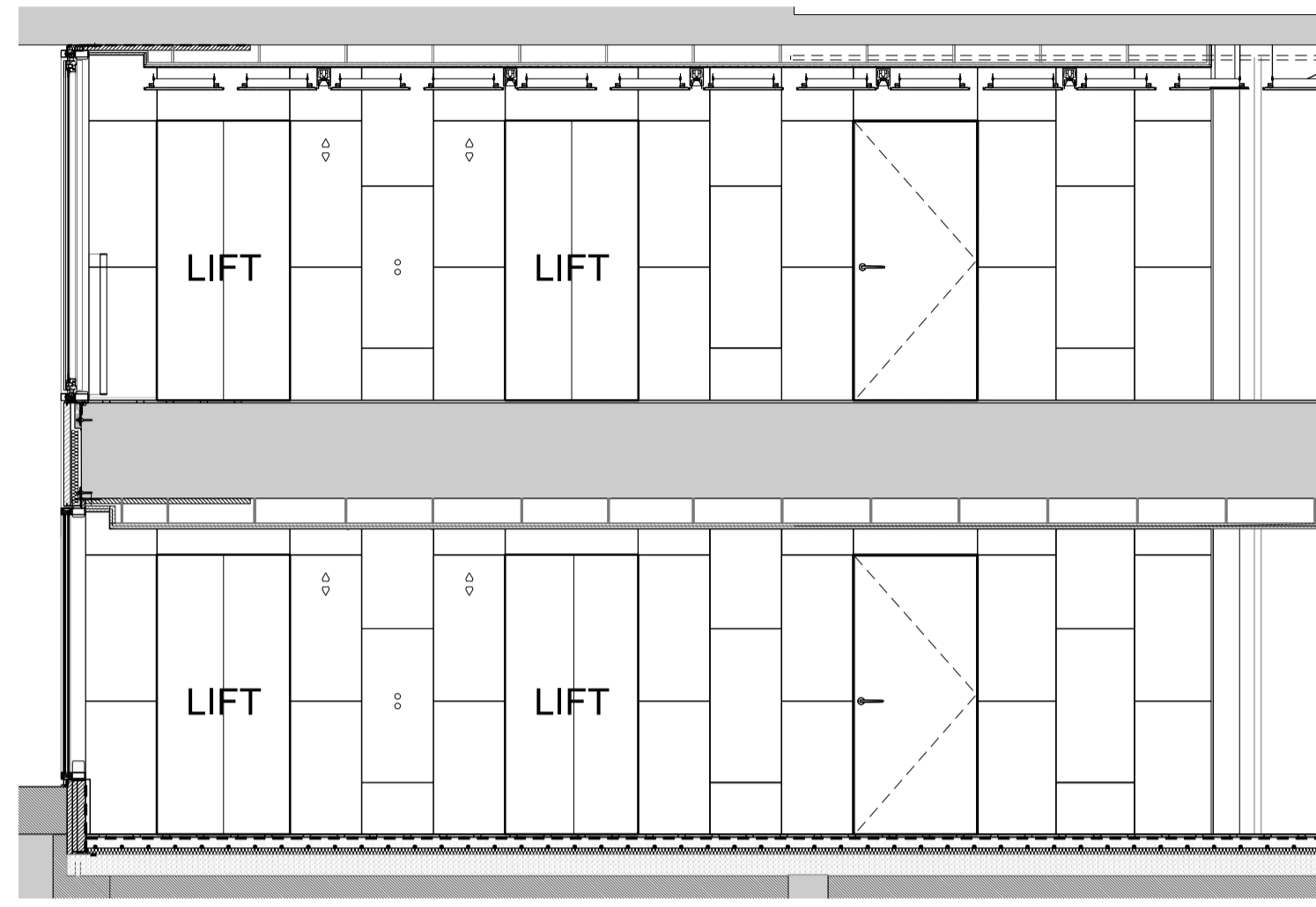
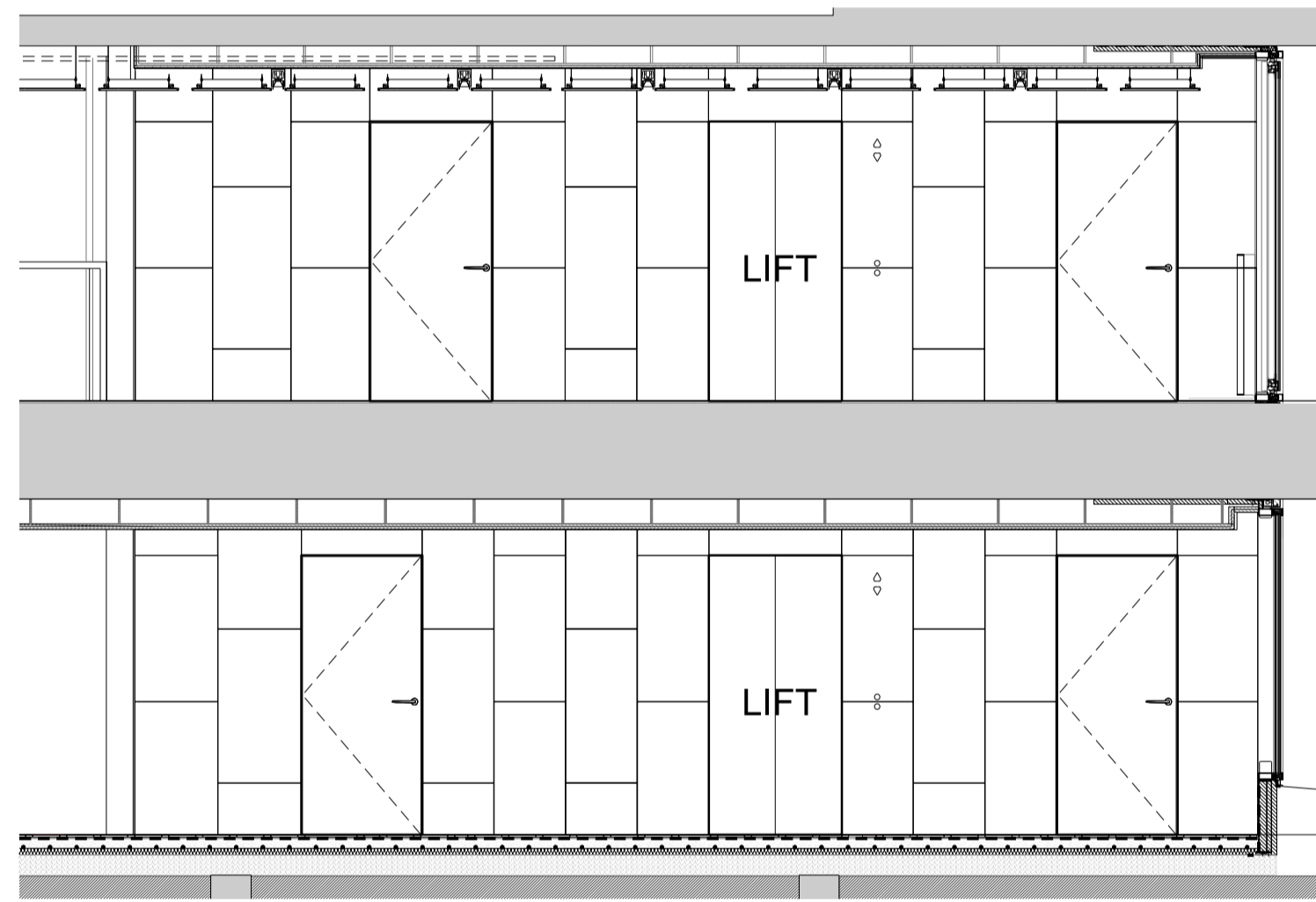


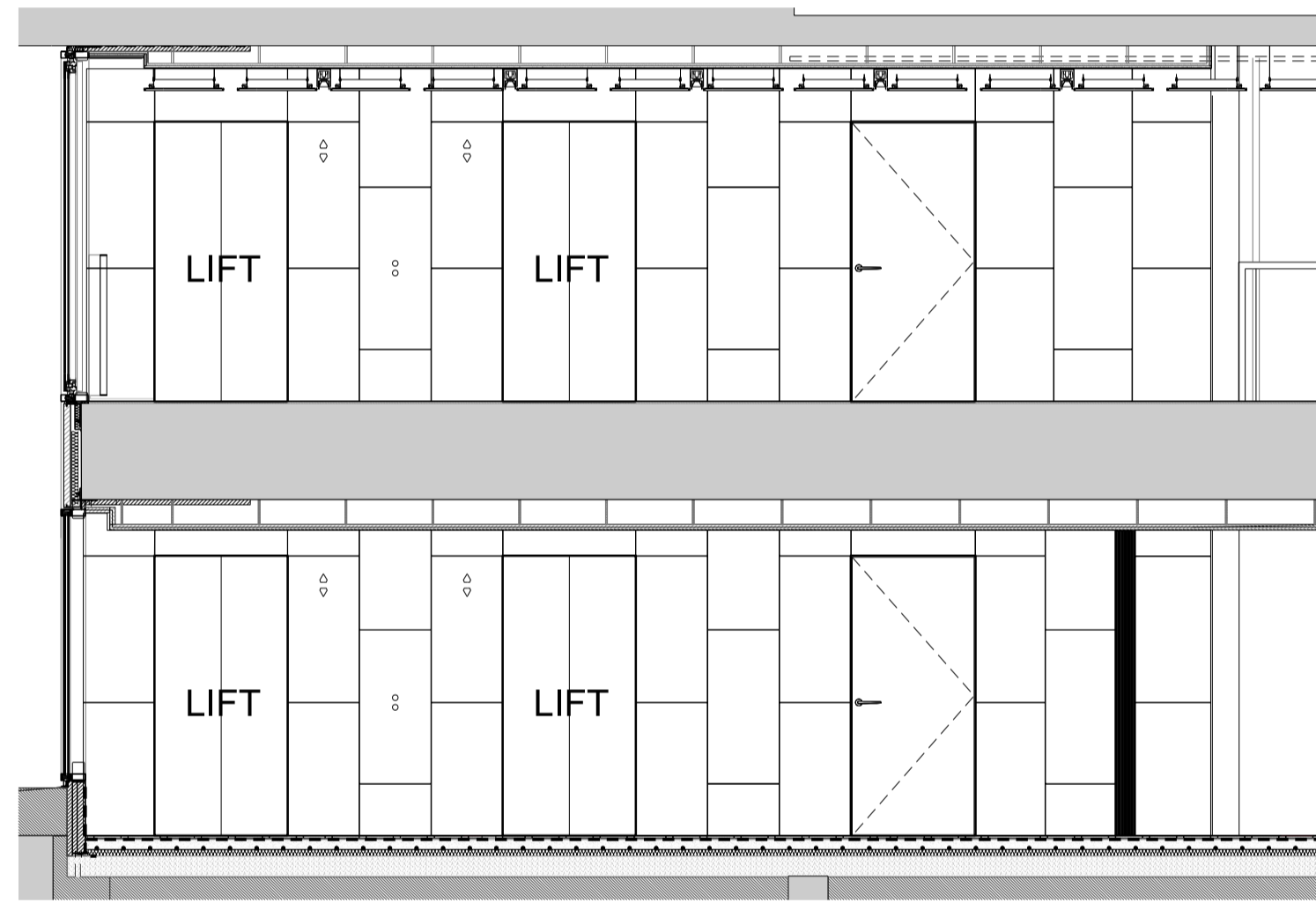
1 EXISTING LIFT LOBBY NORTH 1:50  
 SECTION / ELEVATION



2 EXISTING LIFT LOBBY NORTH 1:50  
 SECTION / ELEVATION

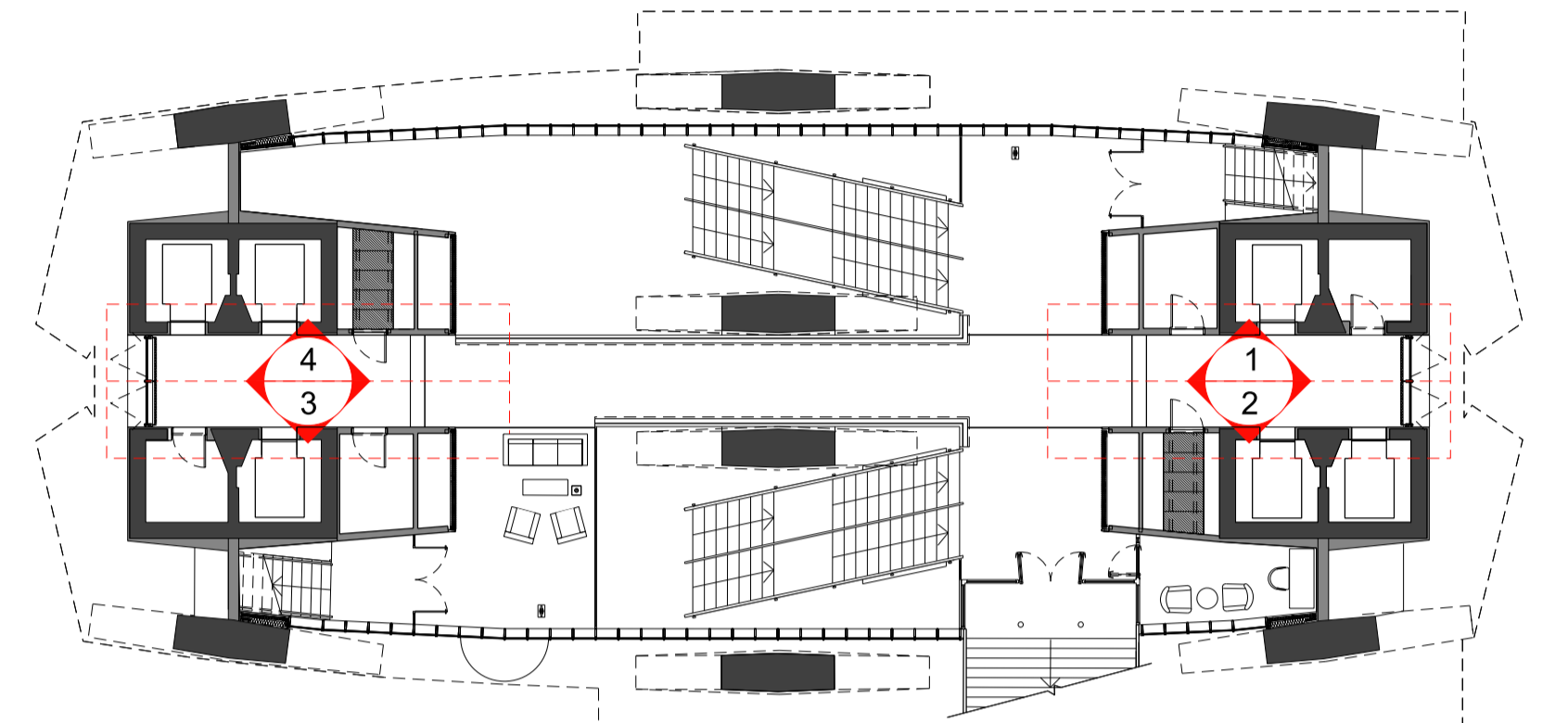


3 PROPOSED LIFT LOBBY SOUTH 1:50  
 WEST SECTION / ELEVATION

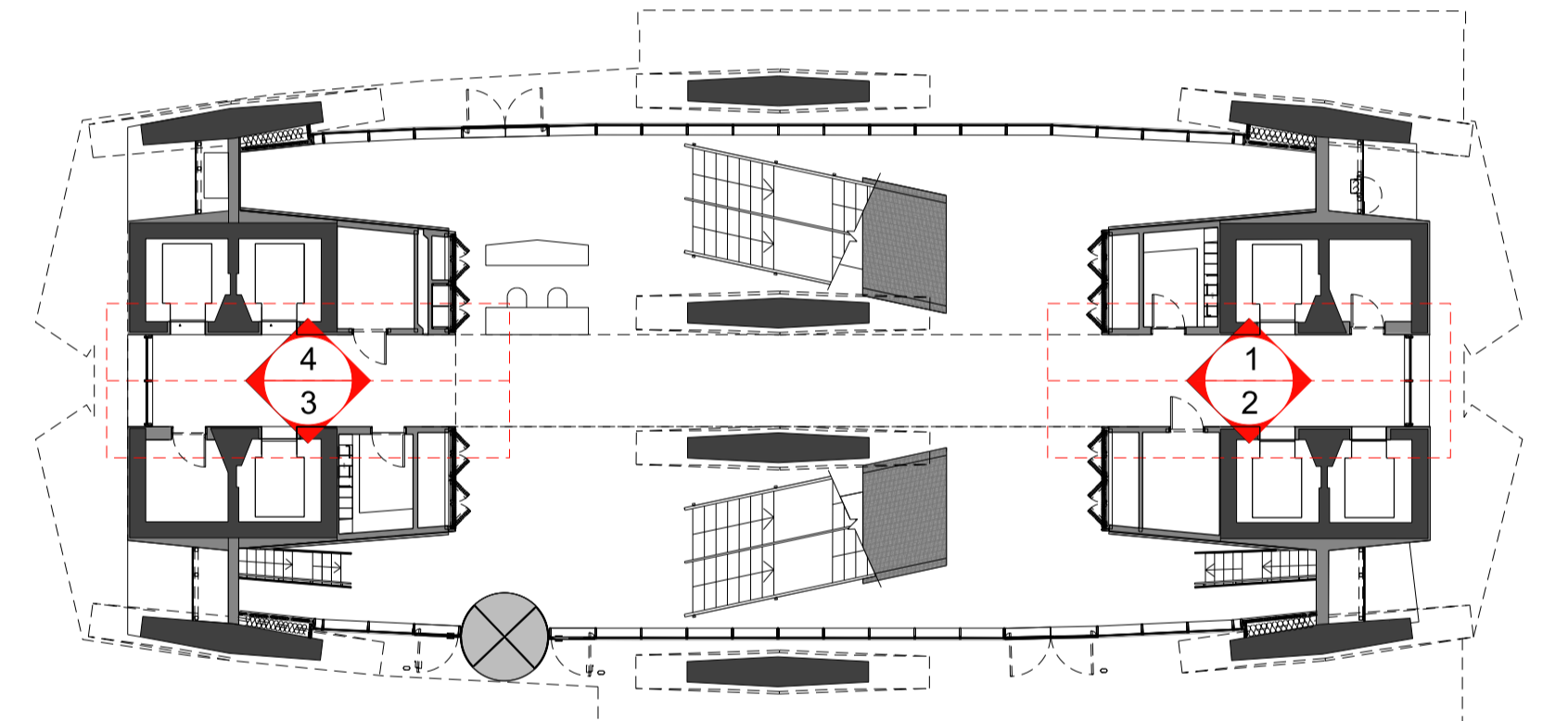


4 PROPOSED LIFT LOBBY SOUTH 1:50  
 EAST SECTION / ELEVATION

Proposed Elevations  
 Material: Blue Pearl Granite  
 - Re-use of existing panels or new to match existing



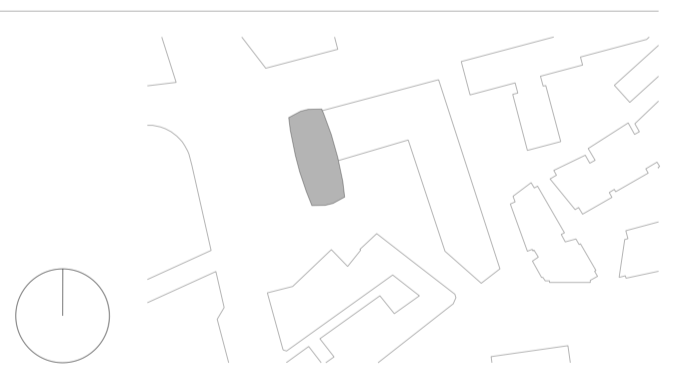
5 PROPOSED MEZZANINE PLAN 1:200



6 PROPOSED GROUND FL PLAN 1:200

PL2 JULY 15 PLANNING ISSUE

REV	DATE	DESCRIPTION



PLANNING

<b>CONRAN+ PARTNERS</b> Architects Designers 22 Shad Thames London SE1 2YU T: 020 7403 8899 cp@conran.com www.conranandpartners.com					
<b>Centre Point</b> 101-103 New Oxford Street London, WC1A 1DD					
TITLE GROUND AND MEZZ LIFT LOBBY NORTH AND SOUTH CENTRE POINT TOWER					
DRAWN	PG	552	DRG #	19821-CPT	REV
CHECKED	AS	SCALE	1:50/200	DATE	JULY 15
		SIZE	A1	ISSUE DATE	JULY 15