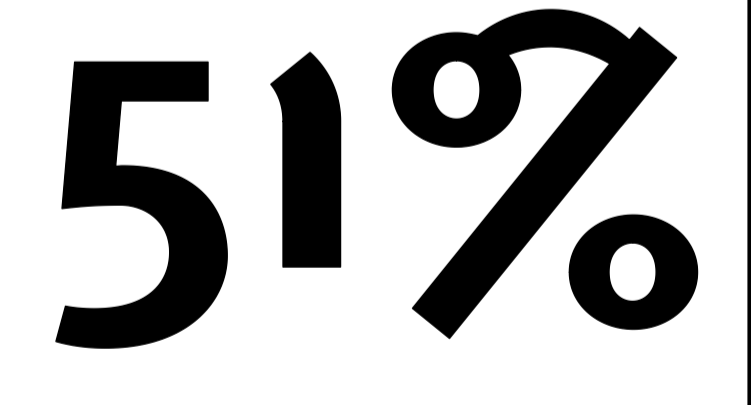


NOTES

Aworth tunnel survey showed all Zara Survey satellite data to be 190mm low. As a result, all Zara heights have been amended to be +190mm.

No.	Date	Checked	Revision Notes
H	11/02/15		Issued for Planning
I	20/05/15		Issued for Planning in response to case officer's comments.

No.	Date	Issue Notes
-----	------	-------------



1a Cobham Mews . London NW1 1SB
t. 44 [0] 8456 123 911 f. 44 [0] 8456 123 998 www.51pct.com

Project
23a Hampstead Hill Gardens

Client
Kinaton Capital BVI Limited
87 Wimpole Street
London
W1G 9RL

Status
Issued for Planning

Drawing
Proposed Flank Elevation

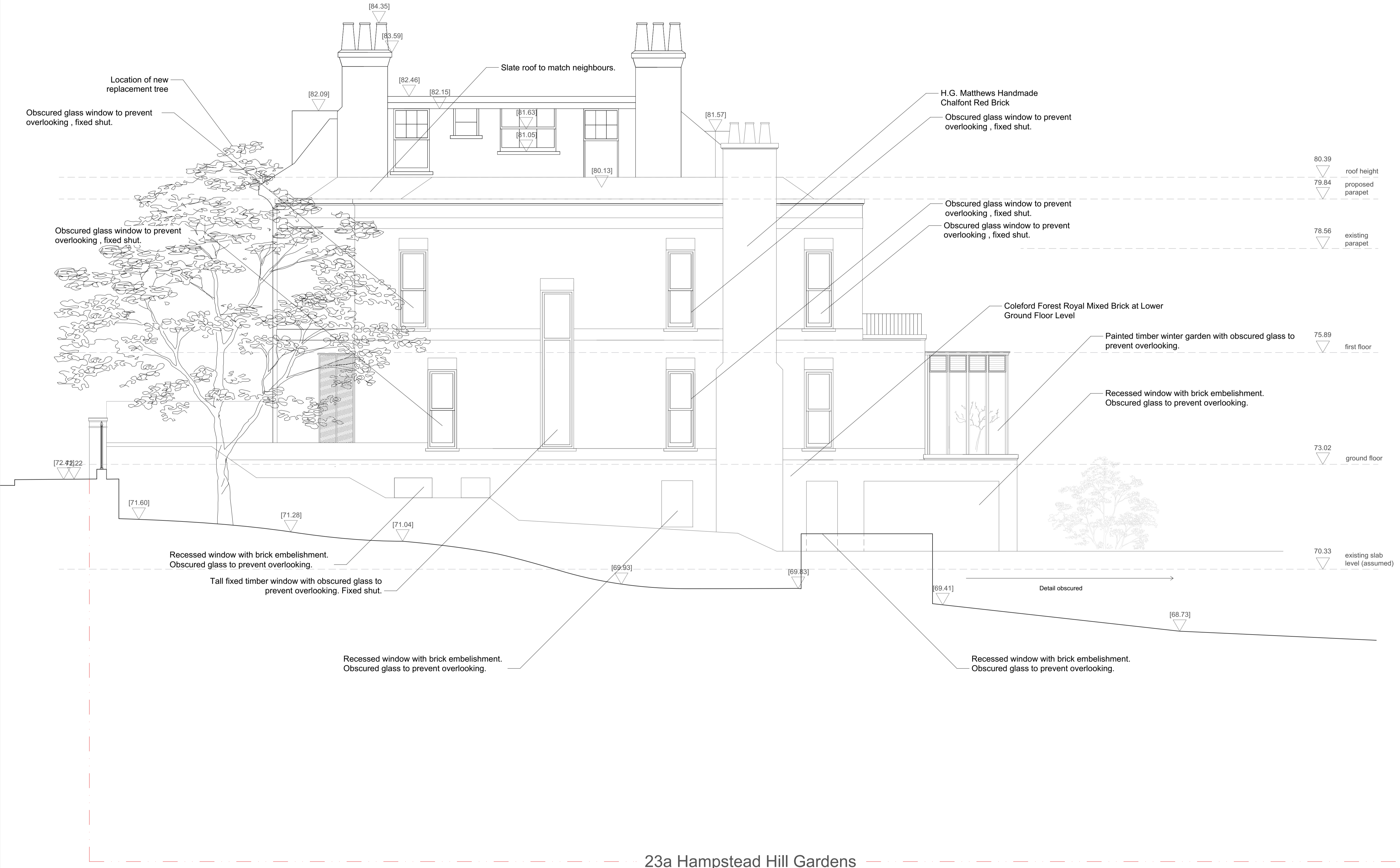
Project Architect
51% studios Project ID 1104

Drawn By
MS Scale 1:50 @ A1

Checked By
51% studios Drawing No. 1102

Date
October 2010 Revision I

File Name



23a Hampstead Hill Gardens

1 Proposed Flank Elevation

