

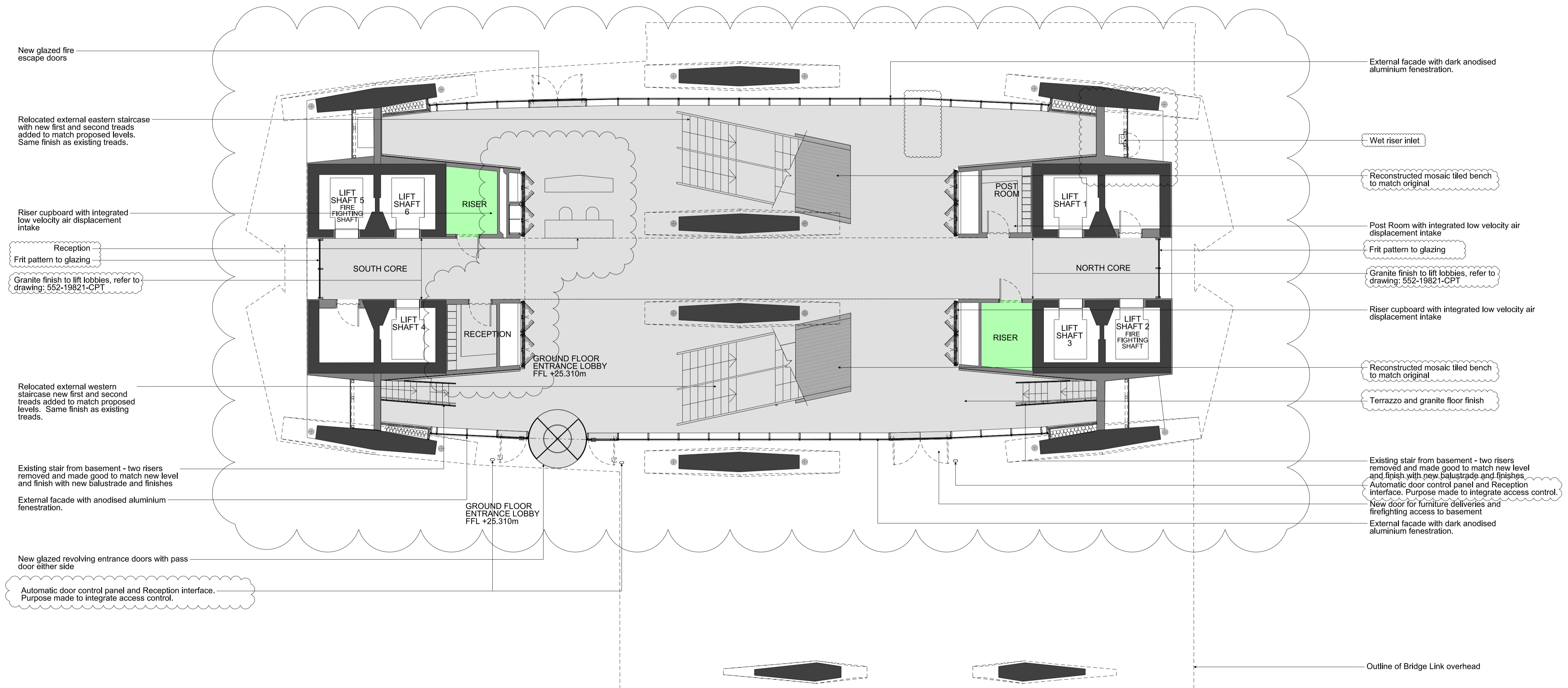
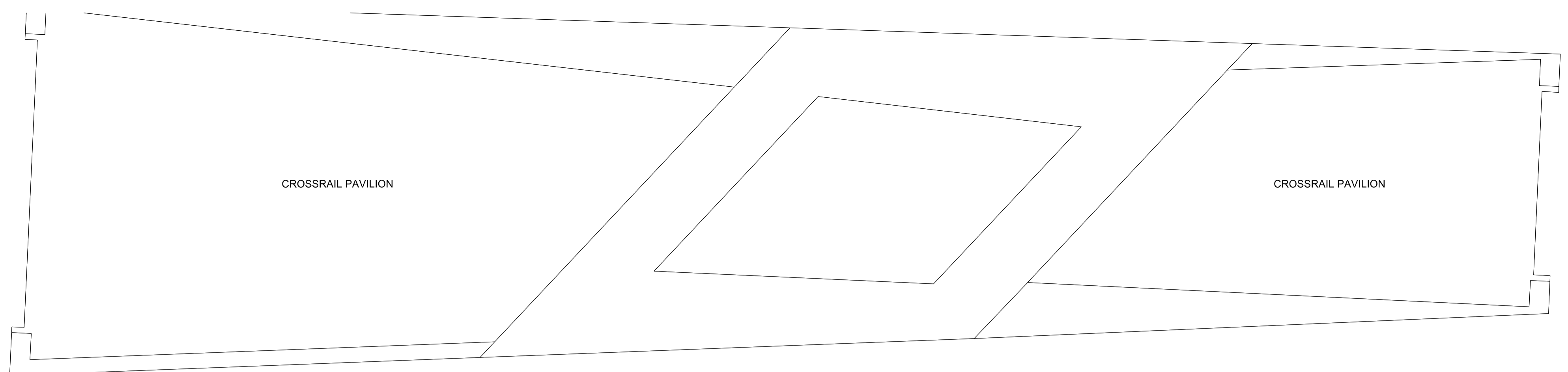
NOTES:
 DO NOT SCALE FROM THIS DRAWING.
 CONTRACTOR TO CHECK ALL DIMENSIONS ON SITE.
 ANY DISCREPANCIES TO BE REPORTED TO THE ARCHITECT IMMEDIATELY.
 COPYRIGHT CONRAN AND PARTNERS LIMITED ©

AREA KEY

RESIDENTIAL	[Light Blue]
RETAIL	[Yellow]
PLANT	[Green]
CIRCULATION	[Grey]
CAR PARK	[Light Blue]
BACK OF HOUSE	[Dark Grey]
OFFICE	[Brown]
RESIDENTIAL AMENITY	[Purple]

KEY

DEMOLITION	[Hatched]
EXISTING STRUCTURE	[Black]
PARTITION	[Dark Grey]
PROPOSED STRUCTURE	[Hatched]
BUILDERSWORK OPENING THROUGH EXISTING SLAB	[Blue Hatched]
BUILDERSWORK OPENING THROUGH UPPER AND LOWER SLAB (USED ON 1ST FLOOR ONLY)	[Blue Hatched]
BUILDERSWORK OPENING THROUGH UPPER SLAB (USED ON 1ST FLOOR ONLY)	[Blue Hatched]



New glazed fire escape doors

Relocated external eastern staircase with new first and second treads added to match proposed levels. Same finish as existing treads.

Riser cupboard with integrated low velocity air displacement intake

Reception

Frit pattern to glazing

Granite finish to lift lobbies, refer to drawing: 552-19821-CPT

Relocated external western staircase new first and second treads added to match proposed levels. Same finish as existing treads.

Existing stair from basement - two risers removed and made good to match new level and finish with new balustrade and finishes

External facade with anodised aluminium fenestration.

New glazed revolving entrance doors with pass door either side

Automatic door control panel and Reception interface. Purpose made to integrate access control.

External facade with dark anodised aluminium fenestration.

Wet riser inlet

Reconstructed mosaic tiled bench to match original

Post Room with integrated low velocity air displacement intake

Frit pattern to glazing

Granite finish to lift lobbies, refer to drawing: 552-19821-CPT

Riser cupboard with integrated low velocity air displacement intake

Reconstructed mosaic tiled bench to match original

Terrazzo and granite floor finish

Existing stair from basement - two risers removed and made good to match new level and finish with new balustrade and finishes. Automatic door control panel and Reception interface. Purpose made to integrate access control.

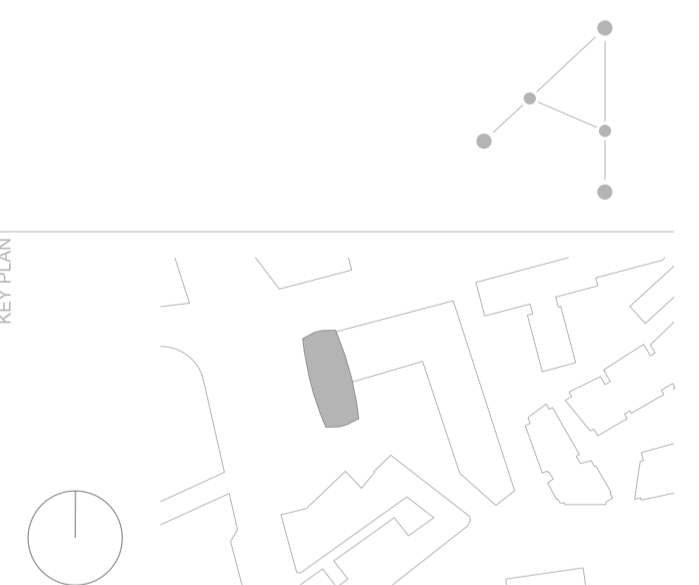
New door for furniture deliveries and firefighting access to basement

External facade with dark anodised aluminium fenestration.

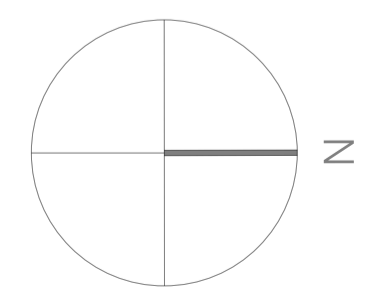
Outline of Bridge Link overhead

REVISIONS

REV	DATE	DESCRIPTION
PL3	SEP 15	PLANNING ISSUE: Lift lobby cladding note updated. Revision clouds from PL2 retained to clarify changes since PL1.
PL2	FEB 15	PLANNING ISSUE: Internal and External Listed finishes and scope of notation of demolition updated, including removal of cladding in internal lift lobbies (north and south). Existing column removed, floor finish and internal layout updated.
PL1	01.04.13	PLANNING ISSUE



1 GROUND FLOOR PLAN 1:100 PROPOSED



STATUS
PLANNING

CONRAN+ PARTNERS
 Architects Designers
 22 Shad Thames London SE1 2YU
 T: 020 7403 8899
 cp@conran.com www.conranandpartners.com

JOB#
Centre Point
 101-103 New Oxford Street
 London, WC1A 1DD

TITLE
 GA PROPOSED PLANS
 GROUND FLOOR
 CENTRE POINT TOWER

CHECKED	DRAWN	JOB #	DATE	REV
NT		552	19602-CPT	PL3
SCALE	SIZE	DATE	REV DATE	
NE	1:100	A1	APR13	SEP 15