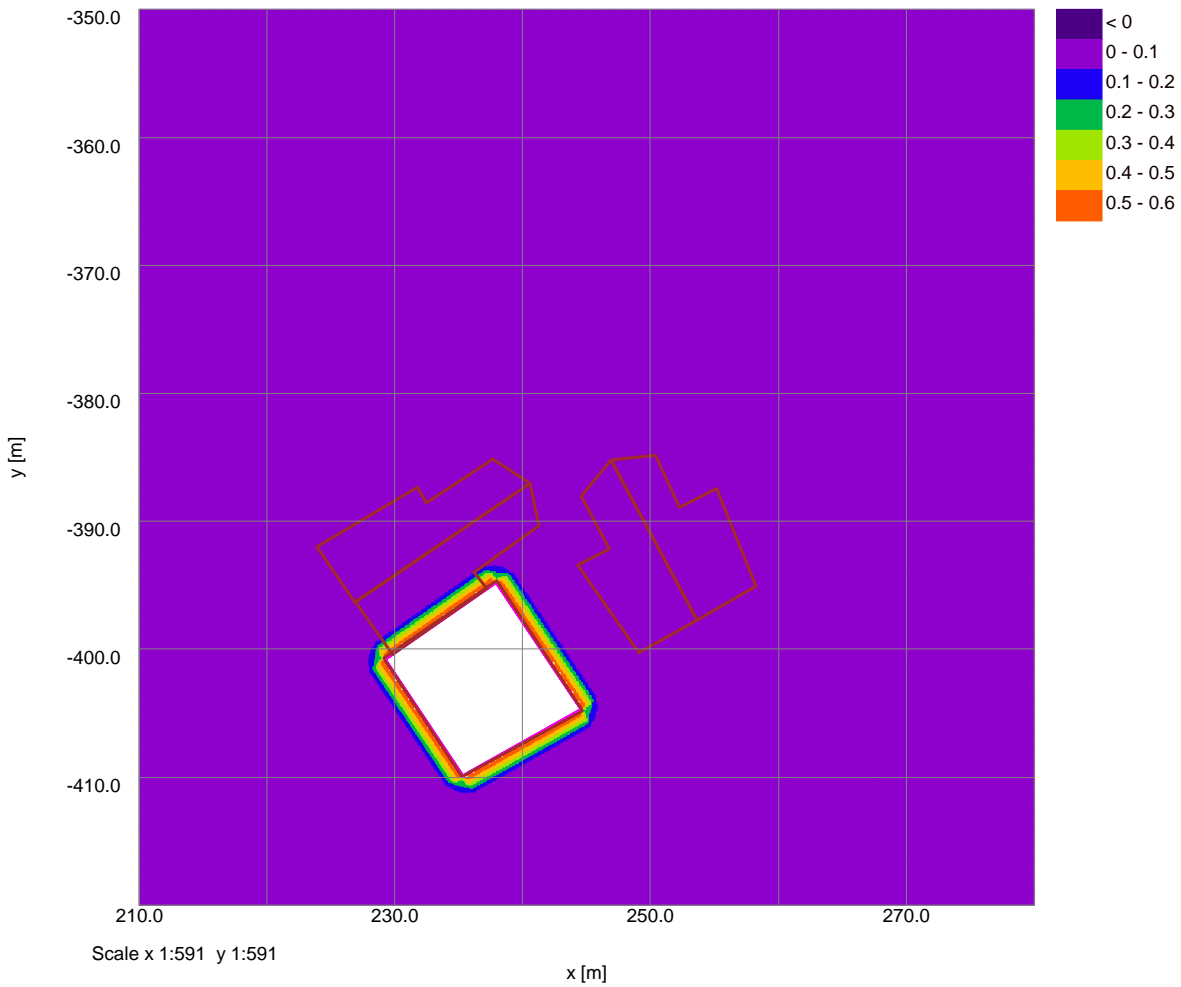


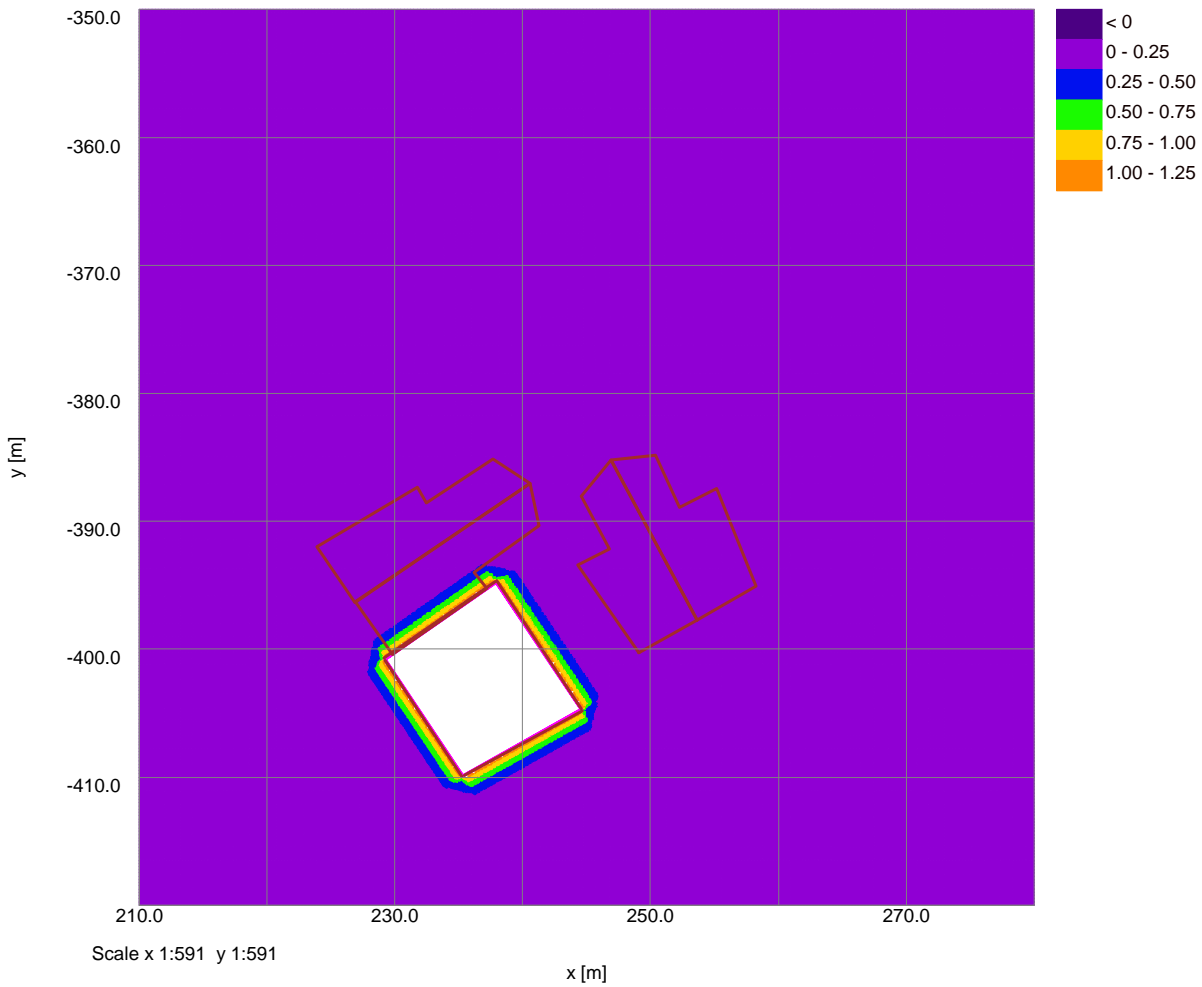
Bull and Last PH
Existing Basement Extension
Combined

Vertical Settlement Contours: Grid 2 (level -2.150m) (Interval 0.1mm)



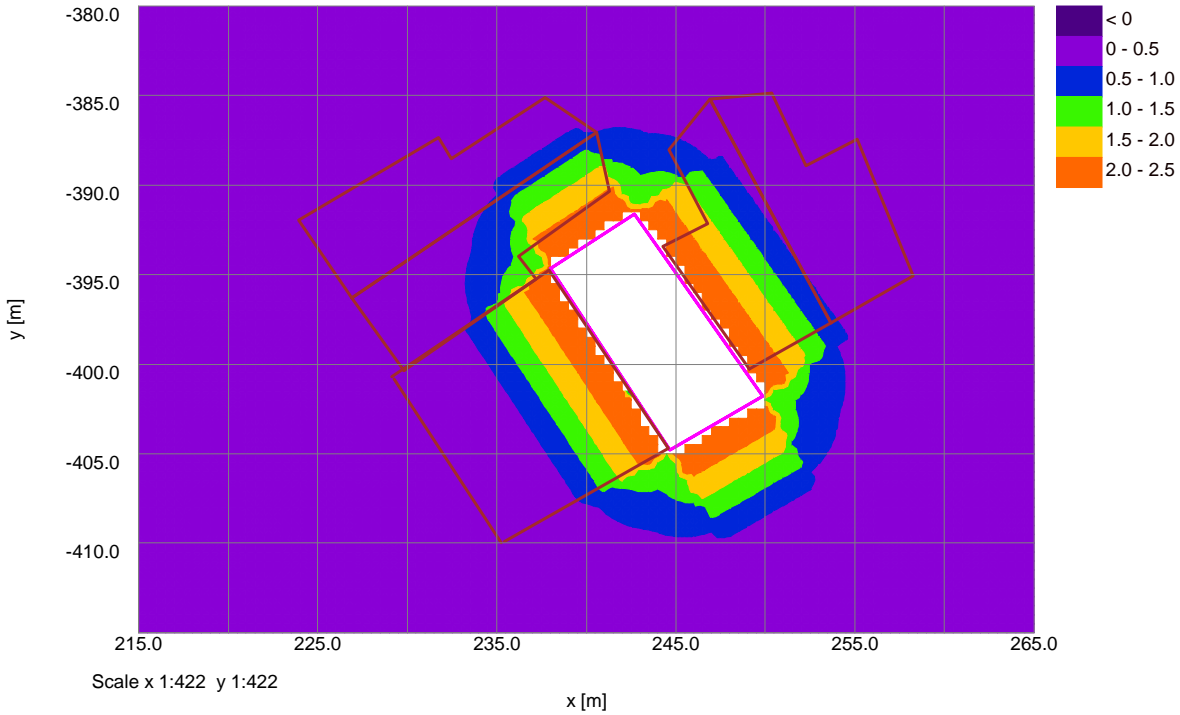
Bull and Last PH
Existing Basement Extension
Combined

Horizontal Displacement Contours: Grid 2 (level -2.150m) Interval 0.25mm



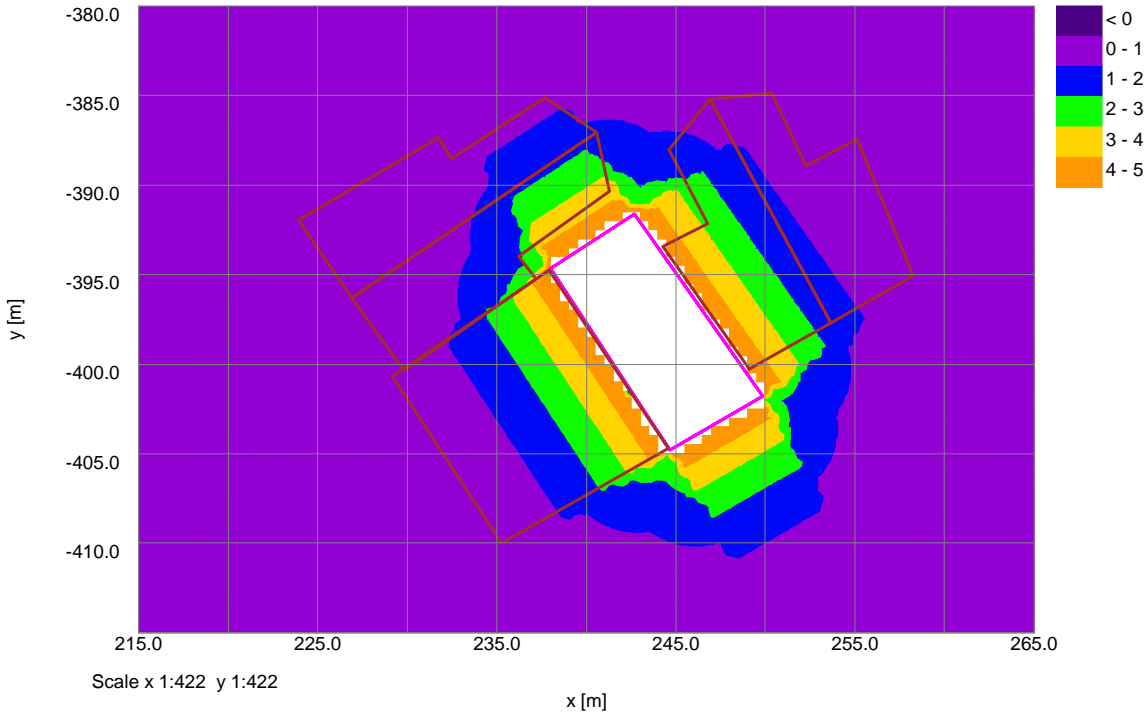
Bull and Last PH
New Basement Combined
Combined

Vertical Settlement Contours: Grid 1 (level 0.000m) (Interval 0.5mm)

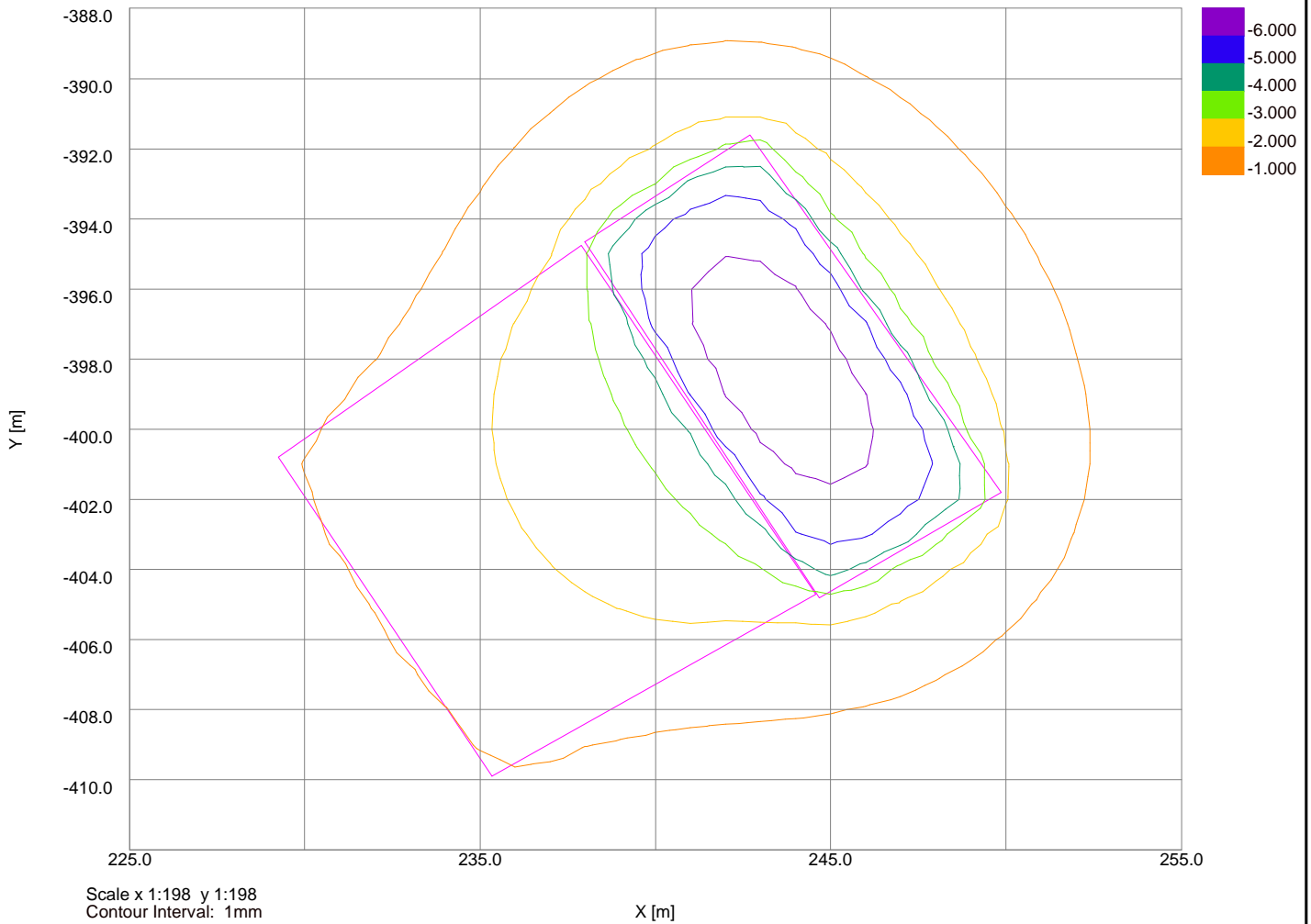


Bull and Last PH
New Basement Combined
Combined

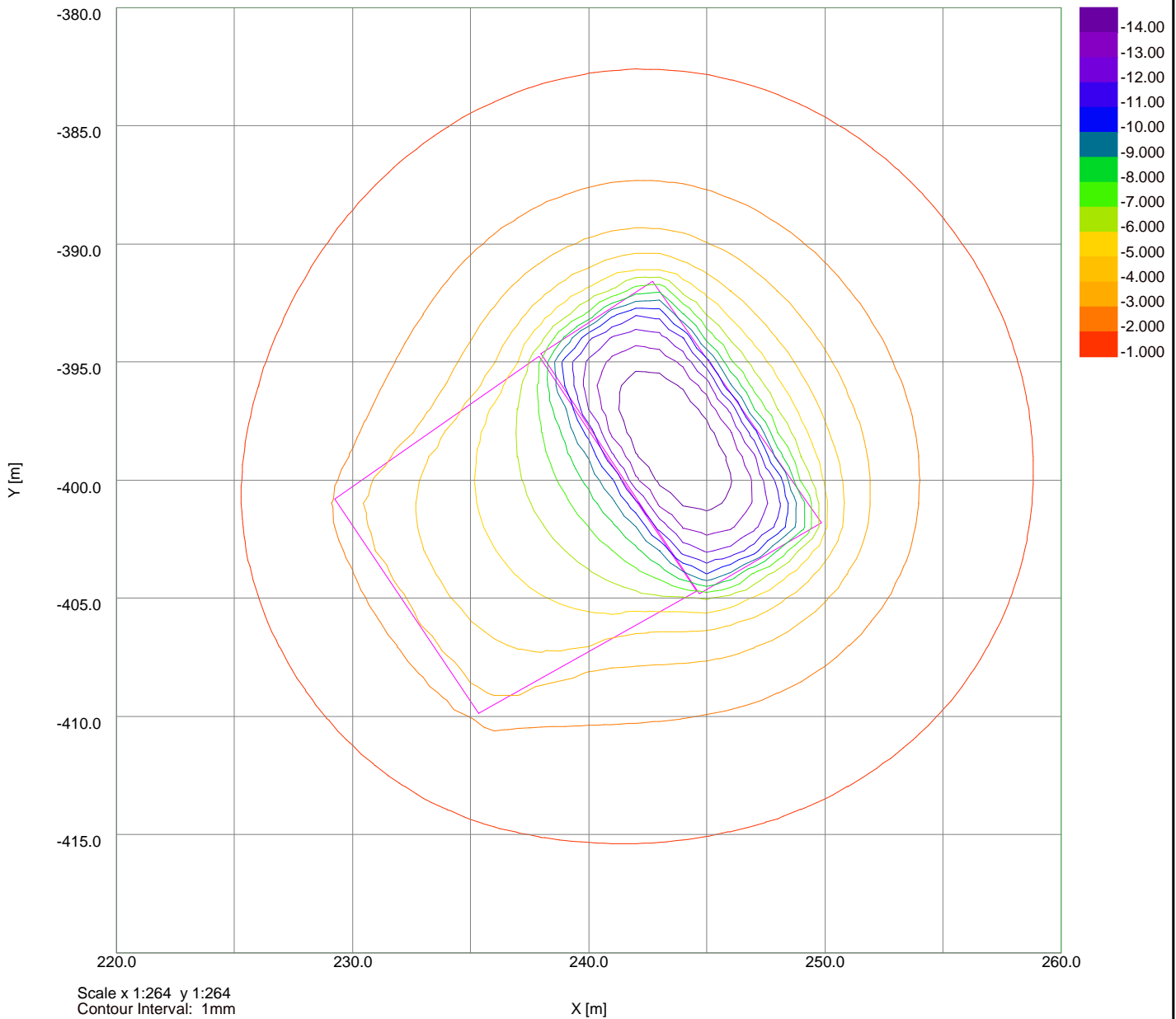
Horizontal Displacement Contours: Grid 1 (level 0.000m) Interval 1mm



Settlement Contours : Grid 1 at 0.0000m



Settlement Contours : Grid 1 at 0.0000m



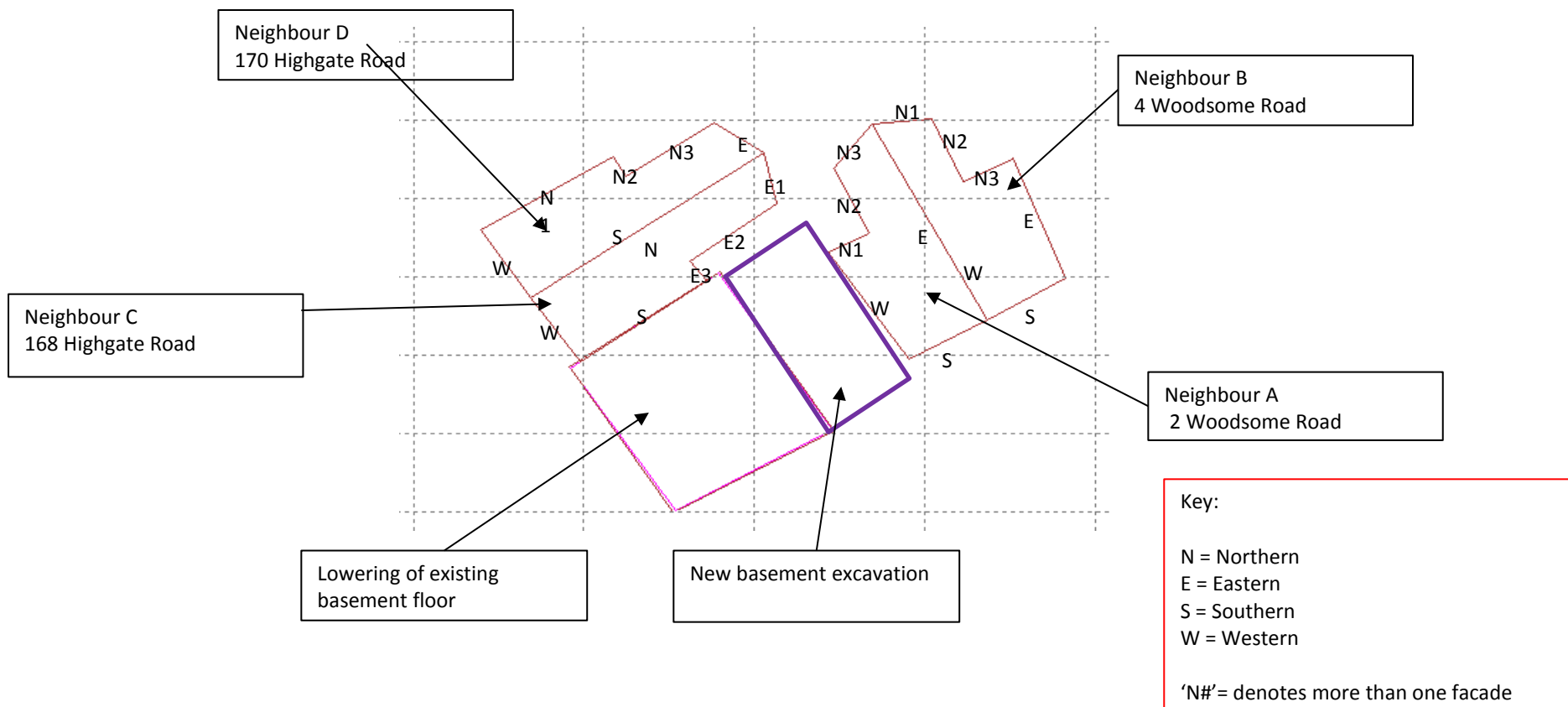
Site Bull and Last Public House, 168 Highgate Road, London, NW5 1QS

Client Oliver Pudney / Etive Pubs Ltd

Engineer Michael Alexander Consulting Engineers

Job Number
J15145

Sheet
1 / 1



Geotechnical & Environmental Associates (GEA) is an engineer-led and client-focused independent specialist providing a complete range of geotechnical and contaminated land investigation, analytical and consultancy services to the property and construction industries.

We have offices at

Widbury Barn
Widbury Hill
Ware
Hertfordshire
SG12 7QE
tel 01727 824666
mail@gea-ltd.co.uk

Church Farm
Gotham Road
Kingston on Soar
Notts
NG11 0DE
tel 01509 674888
midlands@gea-ltd.co.uk

Enquiries can also be made on-line at

www.gea-ltd.co.uk

where information can be found on all of the services that we offer.

