

KING WILLIAM IV PUBLIC HOUSE
Grade: II
List Entry Number: 1139055
Date first listed: 11- Jan-1999

Public House, c1830-37. Stock brick with stone cornice and band, roof not seen behind parapet. 5-bay elevation to Perrin's Lane with 3-bay return to Hampstead High Street.

EXTERIOR:

- [1] 3 storeys and cellars.
- [2] Moulded stone cornice and flat first floor band.
- [3] 5-bay elevation to Perrin's Lane with projecting ends, intermediate bays blind on upper storeys, with recesses treated like surrounding windows with gauged brick heads and stone sills.
- [4] Second floor windows and that in centre of first floor have sashes with glazing bars.
- [5] first floor windows to either side with long casements opening on to cast-iron balconies; all first floor windows with external louvred shutters.
- [6] Ground floor with tripartite sash windows to projecting ends;
- [7] centrepiece treated as symmetrical shopfront with pair of bowed windows with small panes having pointed tops over heavily moulded panels either side of double entrance doors set under broad rectangular top light with tracery formed of intersecting circles.
- [8] Elevation to Hampstead High Street similar, with sashes to ground and second floors (centrepiece of latter blind) and first floor casements with shutters giving on to balconies.
- [9] Central door in moulded architrave surround.

INTERIOR:

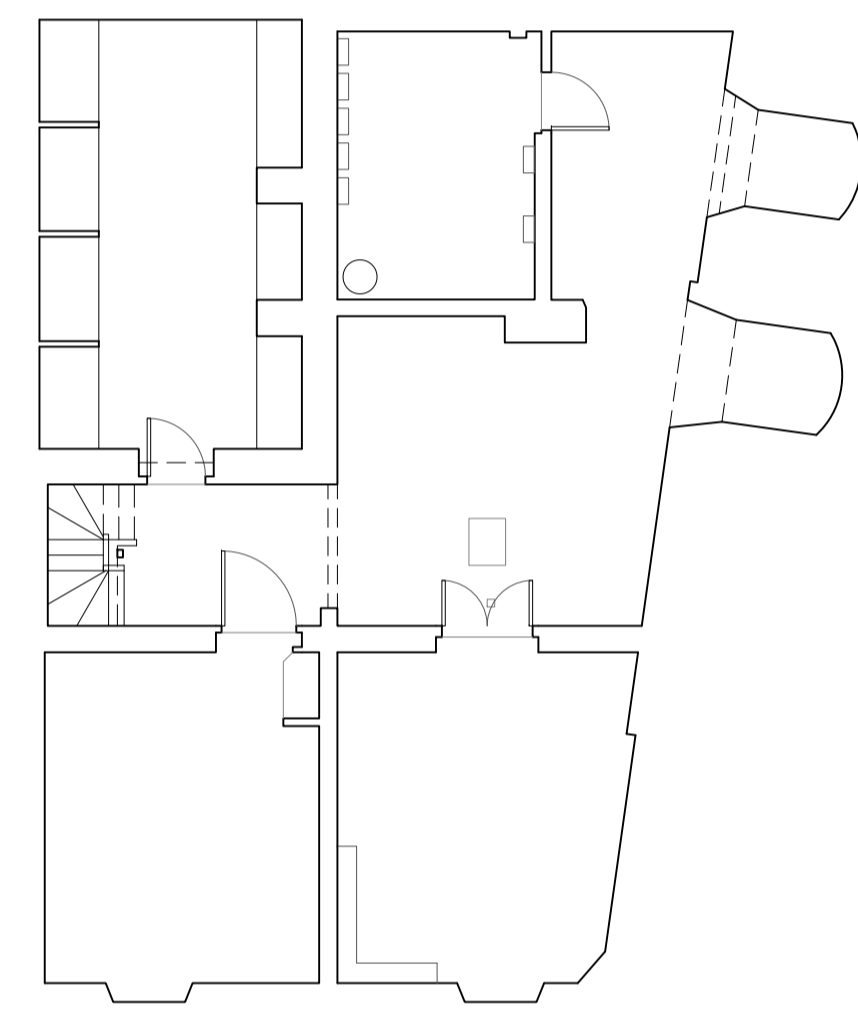
- [10] comprises four main bars linked by archways and C20 screens, served by central C20 bar counter.
- [11] Walls with some tongue and groove panelling, most of which is late C20 replication in bar areas but which survives better on stairs to first floor.
- [12] Early C20 fireplaces.

Included as a good and prominent surviving example of an early C19 public house, little altered externally.

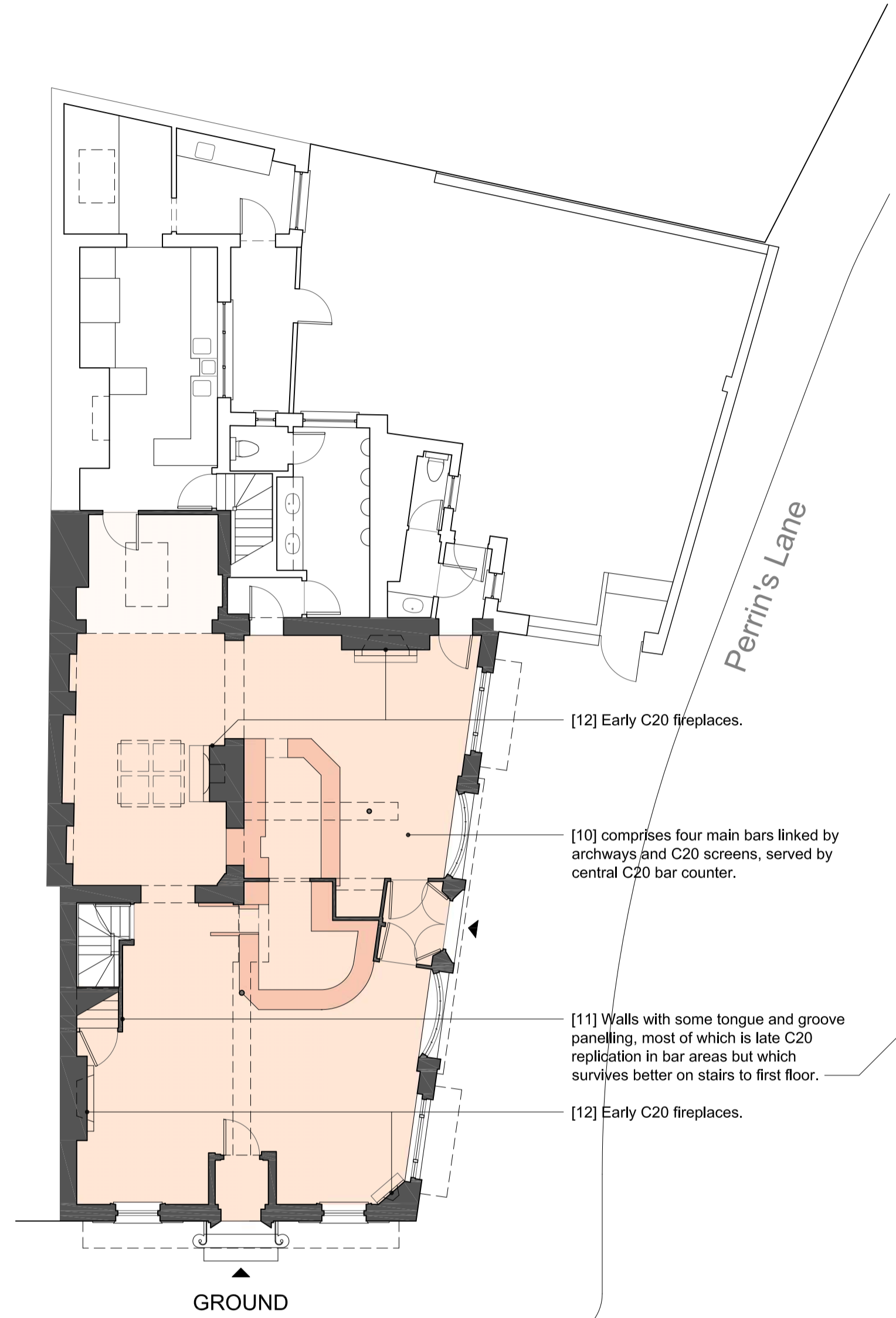
(Bracket number tags by FHA)



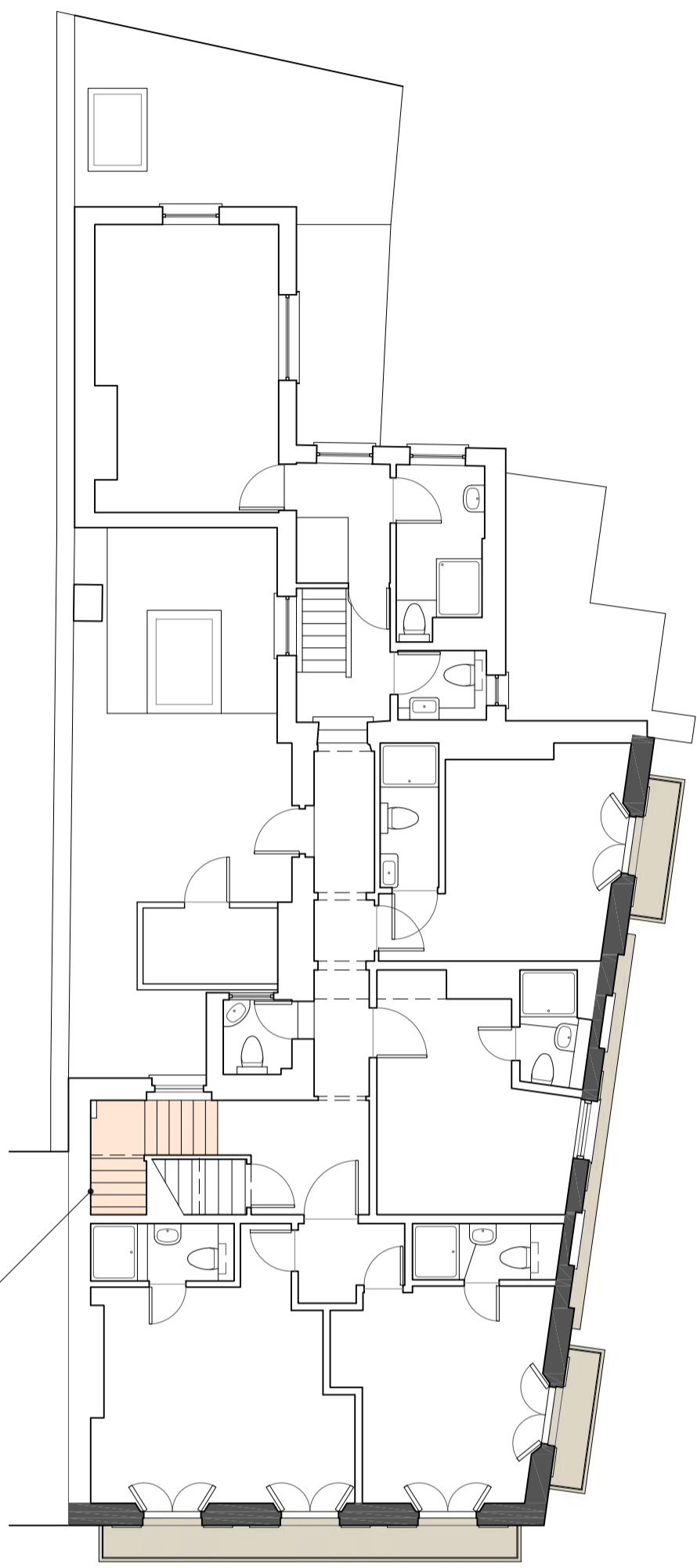
2 Location Plan
Scale 1:1250



BASEMENT



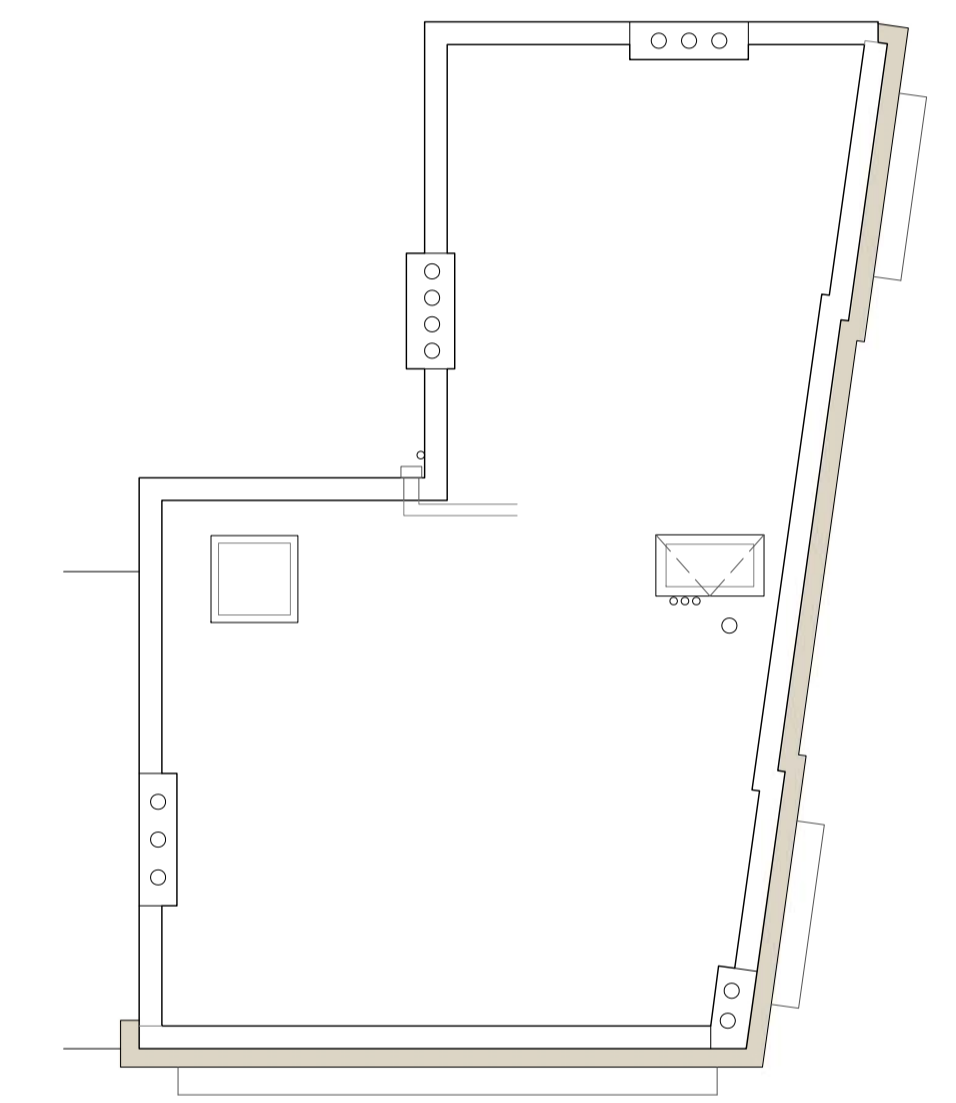
GROUND



FIRST



SECOND



ROOF

- [12] Early C20 fireplaces.
- [10] comprises four main bars linked by archways and C20 screens, served by central C20 bar counter.
- [11] Walls with some tongue and groove panelling, most of which is late C20 replication in bar areas but which survives better on stairs to first floor.
- [12] Early C20 fireplaces.



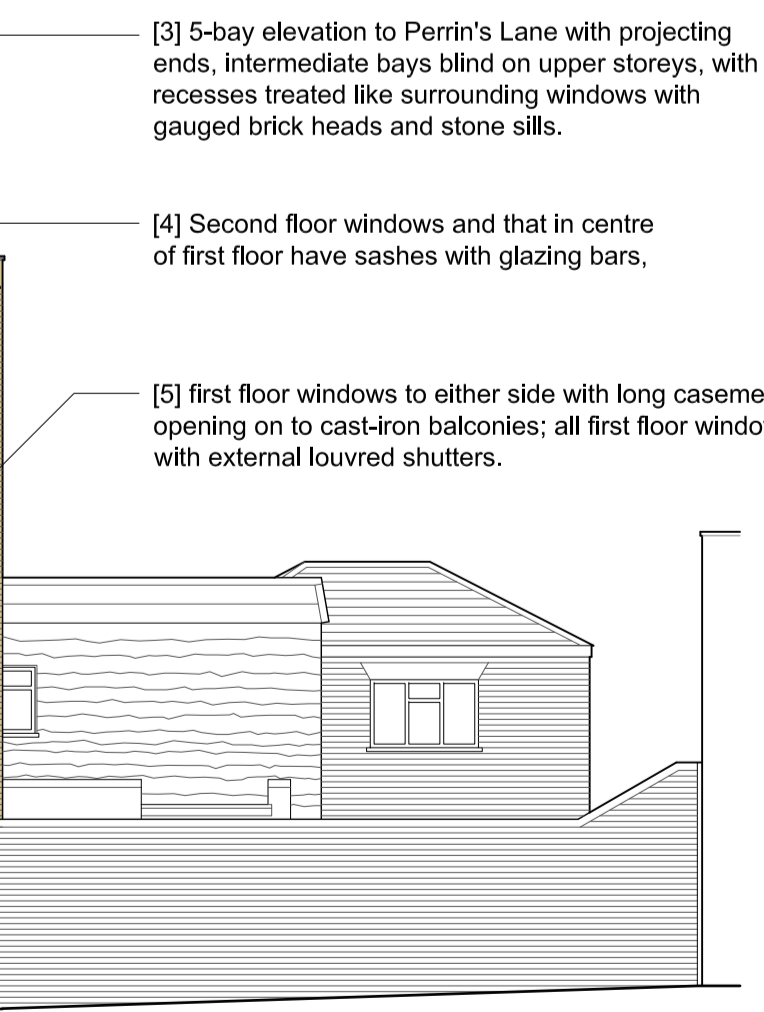
EAST ELEVATION



NORTH ELEVATION
(Hampstead High Street)



WEST ELEVATION
(Perrin's Lane)



SOUTH ELEVATION

- [1] 3 storeys and cellars.
- [2] Moulded stone cornice and flat first floor band.
- [3] 5-bay elevation to Perrin's Lane with projecting ends, intermediate bays blind on upper storeys, with recesses treated like surrounding windows with gauged brick heads and stone sills.
- [4] Second floor windows and that in centre of first floor have sashes with glazing bars.
- [5] first floor windows to either side with long casements opening on to cast-iron balconies; all first floor windows with external louvred shutters.
- [6] Ground floor with tripartite sash windows to projecting ends;
- [7] centrepiece treated as symmetrical shopfront with pair of bowed windows with small panes having pointed tops over heavily moulded panels either side of double entrance doors set under broad rectangular top light with tracery formed of intersecting circles.
- [8] Elevation to Hampstead High Street similar, with sashes to ground and second floors (centrepiece of latter blind) and first floor casements with shutters giving on to balconies.
- [9] Central door in moulded architrave surround.

Notes:

- 1. Copyright of this drawing is the property of Francis Hur Architecture Ltd (FHA) and may not be reproduced without their permission.
- 2. This drawing is for the purpose of Heritage Survey only. It is intended solely as a reference guide and is not to be used for construction.
- 3. Any proposals or documents based on this drawing are subject to approval by the relevant authorities.
- 4. Do not scale from this drawing. This drawing was produced from observable conditions solely at the time of survey. In some instances, obstructions or limitations may have prevented proper measurement.
- 5. All dimensions and levels must be verified on site by any other persons and any discrepancies shall be reported to FHA.

Rev:	Date:	Description:
Status:	Heritage Survey	
Project:	King William IV Public House	
Project Address:	77 Hampstead High Street London, NW3 1RE	
Drawing Title:	Historic Structure Drawings	
Project no:	Drawn by:	Date:
1523	FH	21 Jul 2015
Page size:	Page no:	Drawing no.
A1	1 of 1	H-001