

Note 1
Comments on Cuban Rainwater

The existing rainwater pipework on the south elevation will need to be evaluated as to whether it goes into foul or surface water drainage.

Our proposal is that the rainwater stack at the eastern end be relocated as shown however it has to be established that there is a suitable ground socket to couple into with in the vicinity if this is not the case then a new buried drain will need to be brought to the new position.

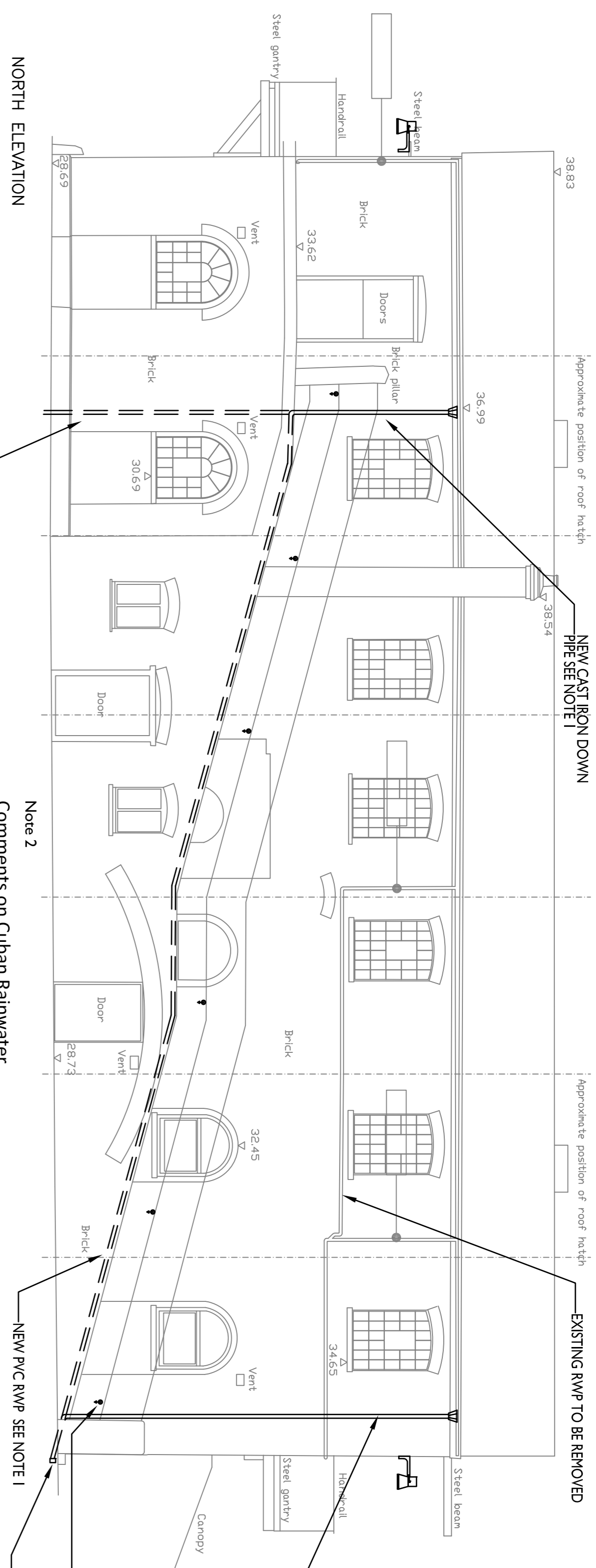
The same applies to the western end the existing rainwater dropper shown passing over the window. This will need to be repositioned and a possible need ground socket complete with associated drainage provided

Drainage on the northern elevation is difficult. The edge of the steps abutting the building should be cut back sufficiently to allow a plastic main to run following the ramp contour down to the ground discharge to disguise this main it was suggested that it be boxed in side and top in reclaimed timber to blend in

That was the proposal to collect rainwater on the assumption that the original scheme did exactly the same by discharging on to the ramp, should an existing drain can be found or a new drain provided at the end walling the arrange on the sloping ramp will be superseded

See Detail 'A' The proposal is that the wooded steps at the edge nearest to the building will be cut out down to the slab level, a new float on plastic run on the slab following the contours down to an 'Aco' drain at ground level coupled into the existing surface water drainage

This float will pick up the 2 no Cast iron rain water droppers, the float should be encased in reclaimed sleepers or similar to disguise it



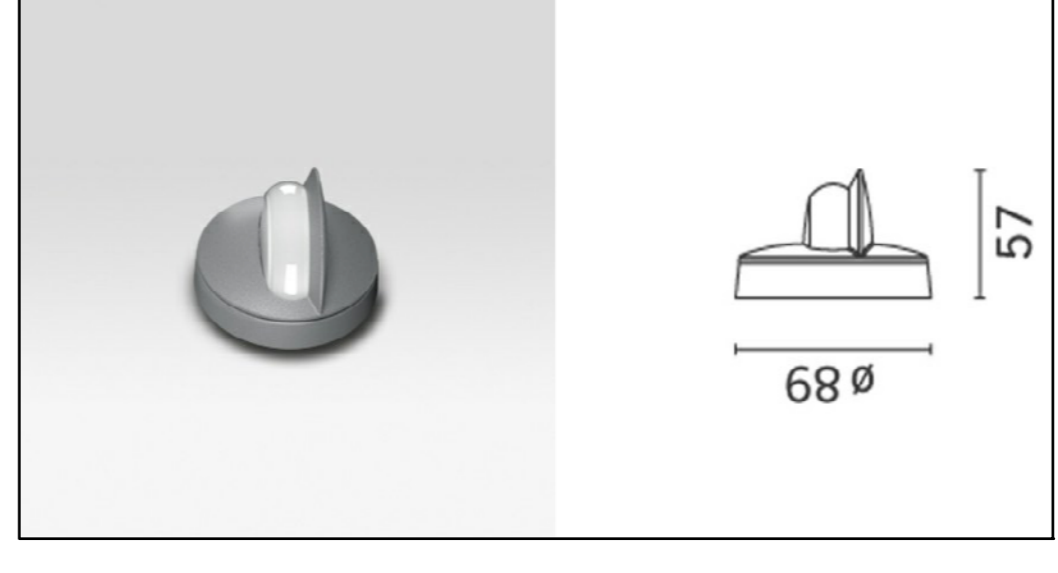
Note 2
Comments on Cuban Rainwater

In all probability the original installation had a down pipe at each end with an intermediate due to the chimney. Access to the the ground area was a gully/ground socket may have been located is severely hampered by the existing retail stalls. The services contractor shall investigate the option (if the existing stalls are to be removed) and the possibility of connecting into a local drain

Note 3
Comments on Cuban Rainwater

The existing 100dia dia rainwater pipe into the toilet system and will need to be rerouted. The original installed the roof discharge and must of had some gully discharge into, we can make the assumption that it is still there behind numerous existing retail stalls that prohibit access, if not the contractor shall install a new surface drain as appropriate joining onto the existing underground system.

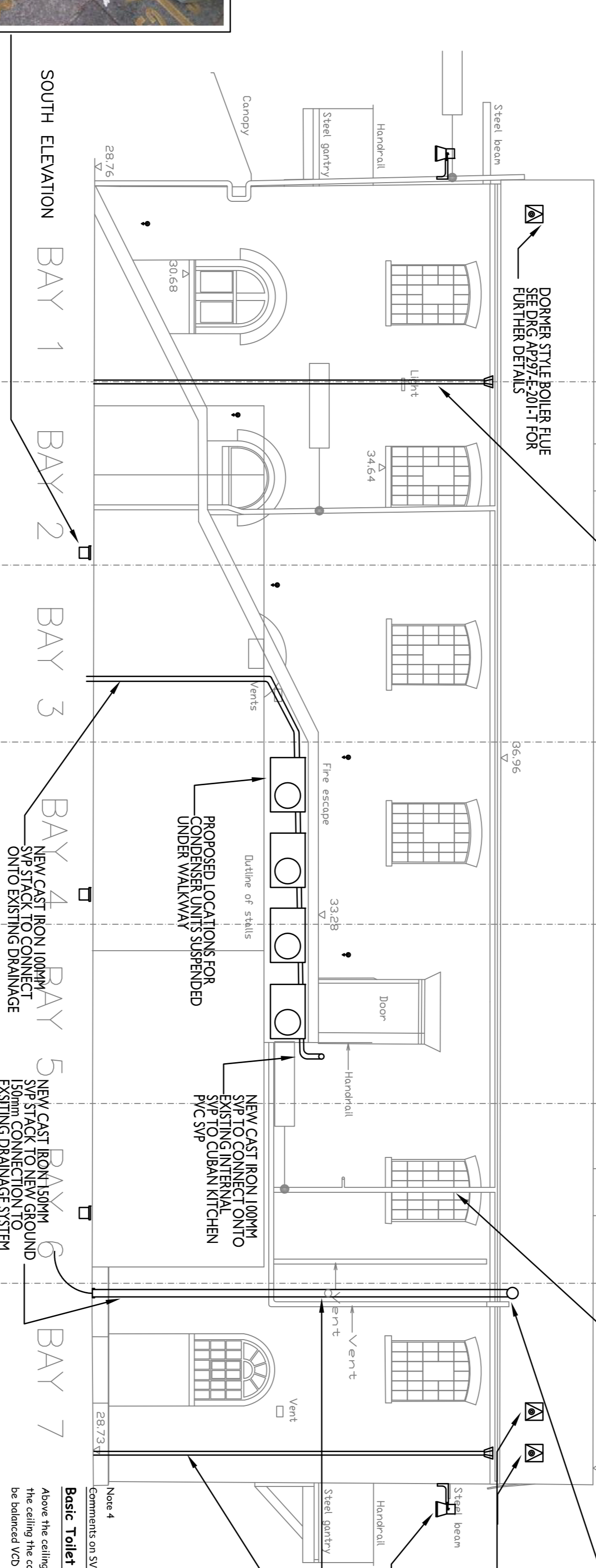
Wall and ceiling-mounted luminaires designed to meet the requirements of the IESNA Illuminance Guide. The product consists of a high quality, durable, and energy-efficient luminaire that is designed to provide a wide range of lighting options. The luminaire is available in a variety of finishes and colors to match your interior design. The luminaire is designed to be installed in a variety of locations, including walls, ceilings, and recessed ceilings. The luminaire is designed to provide a wide range of lighting options, including ambient, task, and accent lighting. The luminaire is designed to be easy to install and maintain. The luminaire is designed to be a long-lasting and reliable lighting solution for your interior space.



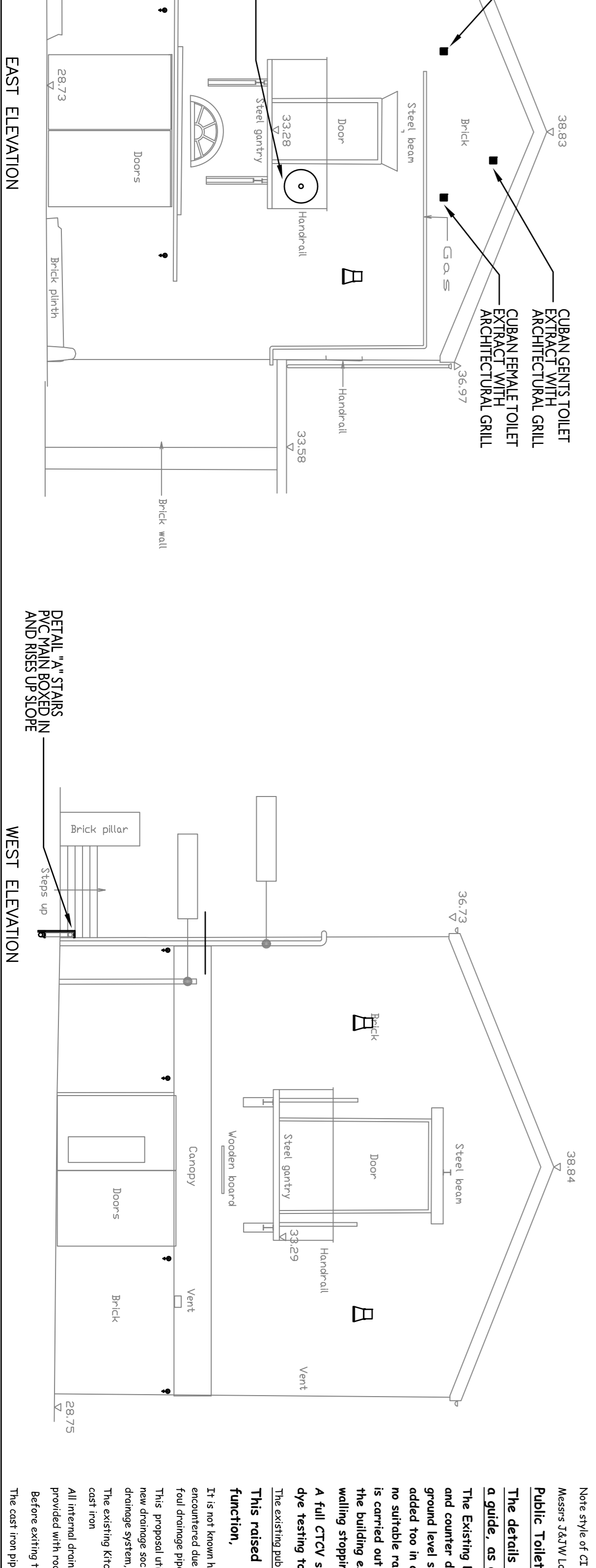
TYPE OF HIGH LEVEL EXTERNAL LUMINAIRE

AS BLOCK D
(EXCEPT WHERE SHOWN OTHERWISE)
25W, 3200lm (YPhilpower)
Luminous efficacy (lm/W): 107
Neutral 4000K (CCT) / Ra = 1
Material: die-cast aluminum alloy
Control gear electronic included
Material: die-cast aluminum alloy
Size (mm): 380x352, Weight (kg): 10.50

CityWoody > CityWoody wall mounted



FLOOR BOX DETAIL AS BLOCK D



Note 4
Comments on SIP

Above the ceiling void on a common suitability sized metal spiral duct with metal stub ducts run to Public diffusers let into the ceiling the connection from the diffuser to the stub duct shall be with suitable flexible ductwork, so that the system can be balanced. VCD dampers shall be included where appropriate

Public Toilet Ventilation

Main toilet entrance doors shall be fitted with appropriately sized non vision door transfer grilles

Public Toilets

The details added to the drawing indicating Drainage Proposals are purely indicative and a guide, as an AS Installed survey has not been carried out

<p>Project CAMDEN STABLES MARKET LONDON</p>		<p>Client STANLEY SIDINGS</p>	
<p>Drawing BUILDING C SERVICES ON ELEVATIONS</p>			
Scale 1:75 @ A1	Date 11/03/15	Drawn TA	Checked DB
<p>Job No. AP297 Drawing No. E300 Revision T2</p>			
<p>OPTIMA B.E.S. LTD Building Environmental Solutions</p> <p>ARCHITECTS IN ASSOCIATION ABOOTS LANE, FARNHAM, GU14 7AB TEL: 01256 323232 E-mail: optima@optima.com</p>			