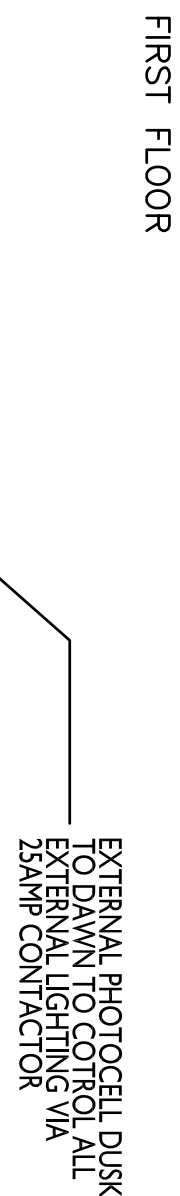
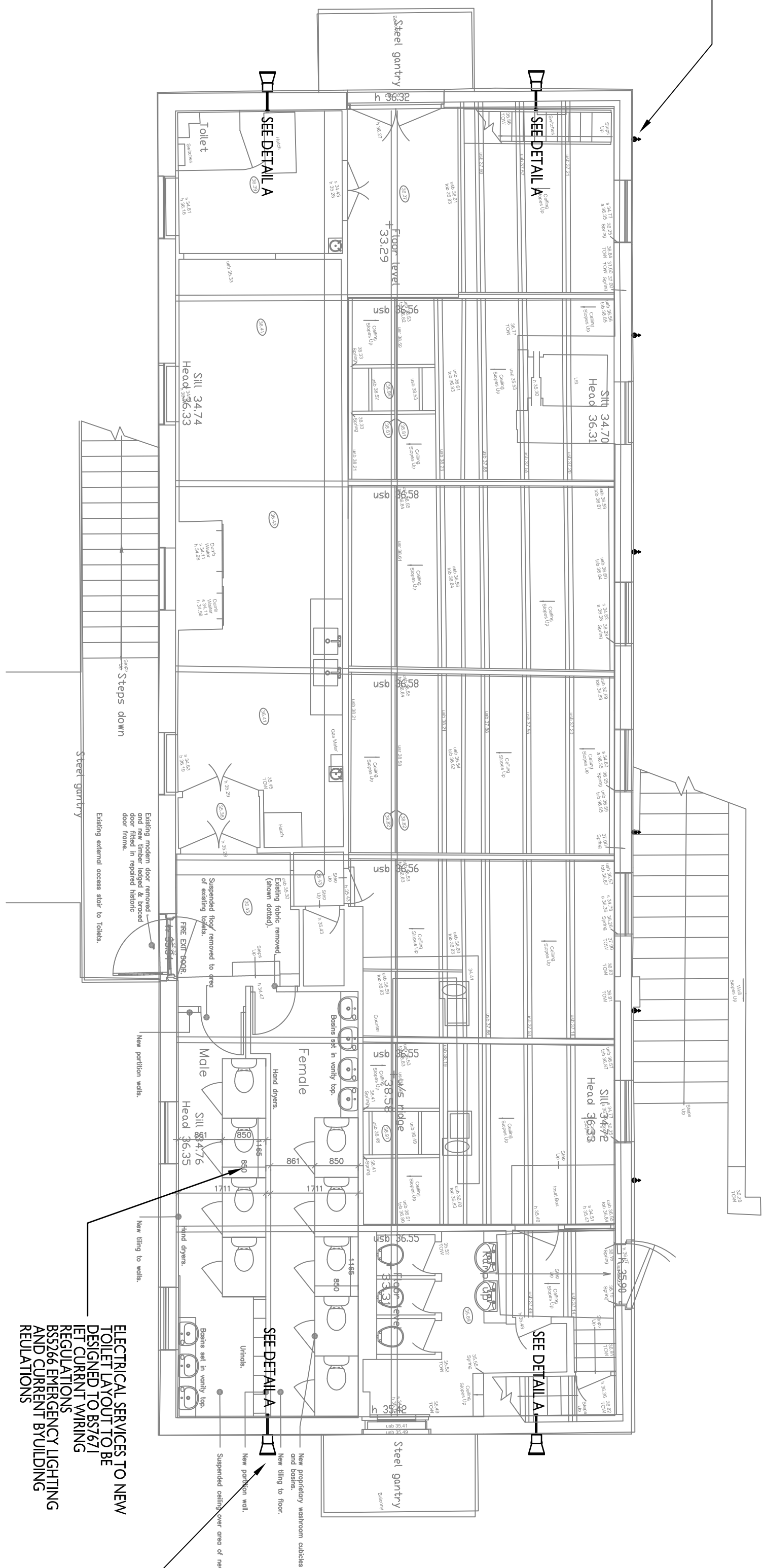
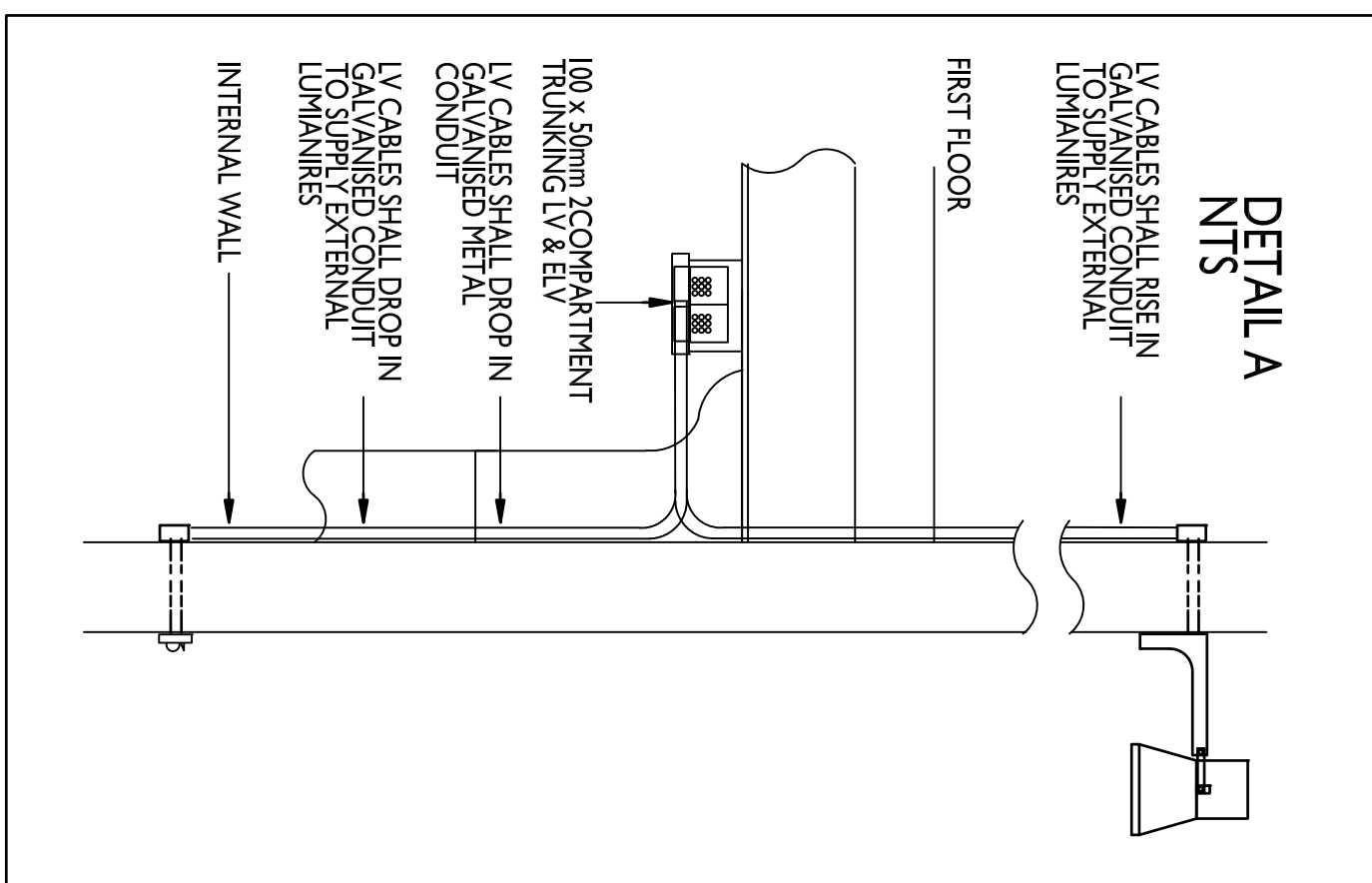
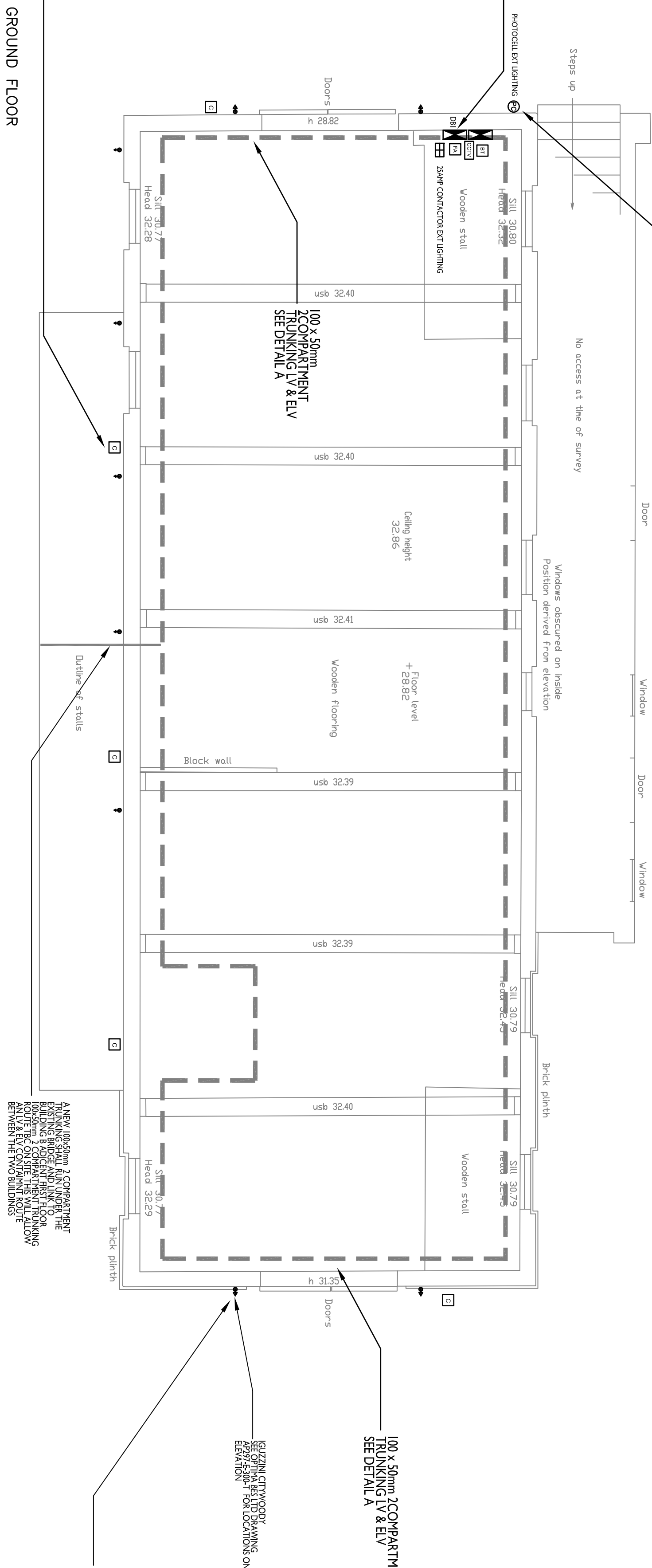


1 2 3 4 5 6 7 8 9 10 11 12 13 14 15 16 17 18 19 20 21 22 23 24 25 26 27 28 29 30 31 32 33 34 35 36 37 38 39 40 41 42 43 44 45 46 47 48 49 50 51 52 53 54 55 56 57 58 59 60 61 62 63 64 65 66 67 68 69 70 71 72 73 74 75 76 77 78 79 80 81 82 83 84 85 86 87 88 89 90 91 92 93 94 95 96 97 98 99 100 101 102 103 104 105 106 107 108 109 110 111 112 113 114 115 116 117 118 119 120 121 122 123 124 125 126 127 128 129 130 131 132 133 134 135 136 137 138 139 140 141 142 143 144 145 146 147 148 149 150 151 152 153 154 155 156 157 158 159 160 161 162 163 164 165 166 167 168 169 170 171 172 173 174 175 176 177 178 179 180 181 182 183 184 185 186 187 188 189 190 191 192 193 194 195 196 197 198 199 200 201 202 203 204 205 206 207 208 209 210 211 212 213 214 215 216 217 218 219 220 221 222 223 224 225 226 227 228 229 230 231 232 233 234 235 236 237 238 239 240 241 242 243 244 245 246 247 248 249 250 251 252 253 254 255 256 257 258 259 260 261 262 263 264 265 266 267 268 269 270 271 272 273 274 275 276 277 278 279 280 281 282 283 284 285 286 287 288 289 290 291 292 293 294 295 296 297 298 299 300 301 302 303 304 305 306 307 308 309 310 311 312 313 314 315 316 317 318 319 320 321 322 323 324 325 326 327 328 329 330 331 332 333 334 335 336 337 338 339 340 341 342 343 344 345 346 347 348 349 350 351 352 353 354 355 356 357 358 359 360 361 362 363 364 365 366 367 368 369 370 371 372 373 374 375 376 377 378 379 380 381 382 383 384 385 386 387 388 389 390 391 392 393 394 395 396 397 398 399 400 401 402 403 404 405 406 407 408 409 410 411 412 413 414 415 416 417 418 419 420 421 422 423 424 425 426 427 428 429 430 431 432 433 434 435 436 437 438 439 440 441 442 443 444 445 446 447 448 449 450 451 452 453 454 455 456 457 458 459 460 461 462 463 464 465 466 467 468 469 470 471 472 473 474 475 476 477 478 479 480 481 482 483 484 485 486 487 488 489 490 491 492 493 494 495 496 497 498 499 500 501 502 503 504 505 506 507 508 509 510 511 512 513 514 515 516 517 518 519 520 521 522 523 524 525 526 527 528 529 530 531 532 533 534 535 536 537 538 539 540 541 542 543 544 545 546 547 548 549 550 551 552 553 554 555 556 557 558 559 560 561 562 563 564 565 566 567 568 569 570 571 572 573 574 575 576 577 578 579 580 581 582 583 584 585 586 587 588 589 590 591 592 593 594 595 596 597 598 599 600 601 602 603 604 605 606 607 608 609 610 611 612 613 614 615 616 617 618 619 620 621 622 623 624 625 626 627 628 629 630 631 632 633 634 635 636 637 638 639 640 641 642 643 644 645 646 647 648 649 650 651 652 653 654 655 656 657 658 659 660 661 662 663 664 665 666 667 668 669 670 671 672 673 674 675 676 677 678 679 680 681 682 683 684 685 686 687 688 689 690 691 692 693 694 695 696 697 698 699 700 701 702 703 704 705 706 707 708 709 710 711 712 713 714 715 716 717 718 719 720 721 722 723 724 725 726 727 728 729 730 731 732 733 734 735 736 737 738 739 740 741 742 743 744 745 746 747 748 749 750 751 752 753 754 755 756 757 758 759 760 761 762 763 764 765 766 767 768 769 770 771 772 773 774 775 776 777 778 779 780 781 782 783 784 785 786 787 788 789 790 791 792 793 794 795 796 797 798 799 800 801 802 803 804 805 806 807 808 809 810 811 812 813 814 815 816 817 818 819 820 821 822 823 824 825 826 827 828 829 830 831 832 833 834 835 836 837	
-------------------------------------------------------------------------------------------------------------------------------------------------------------------------------------------------------------------------------------------------------------------------------------------------------------------------------------------------------------------------------------------------------------------------------------------------------------------------------------------------------------------------------------------------------------------------------------------------------------------------------------------------------------------------------------------------------------------------------------------------------------------------------------------------------------------------------------------------------------------------------------------------------------------------------------------------------------------------------------------------------------------------------------------------------------------------------------------------------------------------------------------------------------------------------------------------------------------------------------------------------------------------------------------------------------------------------------------------------------------------------------------------------------------------------------------------------------------------------------------------------------------------------------------------------------------------------------------------------------------------------------------------------------------------------------------------------------------------------------------------------------------------------------------------------------------------------------------------------------------------------------------------------------------------------------------------------------------------------------------------------------------------------------------------------------------------------------------------------------------------------------------------------------------------------------------------------------------------------------------------------------------------------------------------------------------------------------------------------------------------------------------------------------------------------------------------------------------------------------------------------------------------------------------------------------------------------------------------------------------------------------------------------------------------------------------------------------------------------------------------------------------------------------------------------------------------------------------------------------------------------------------------------------------------------------------------------------------------------------------------------------------------------------------------------------------------------------------------------------------------------------------------------------------------------------------------------------------------------------------------------------------------------------------------------------------------------------------------------------------------------------------------------------------------------------------------------------------------------------------------------------------------------------------------------------------------------------------------------------------------------------------------------------------------------------------------------------------------------------------------------------------------------------------------------------------------------------------------------------------------------------------------------------------------------------------------------------------------------------------------------------------------------------------------------------------------------------------------------------------------------------------------------------------------------------------------------------------------------------------------------------------------------------------------------------------------------------------------------------------------------------------------------------------------------------------------------------------------------------------------------------------------------------------------------------------------------------------------------------------------------------------------------------------------------------------------------------------------------------------------------------------------------------------------------------------------------------------------------------------------------------------------------------------------------------------------------------------------------------------------------------------------------------------------------------------------------------------------------------------------------------------------------------------------------------------------------------------------------------------------------------------------------------------------------------------------------------------------------------------------------------------------------------------------------------------------------------------------------------------------------------------------------------------------------------------------------------------------------------------------------------------------------------------------------------------------------------------------------------------------------------------------------------------------------------------------------------------------------------------------------------------------------------------------------------------------------------------------------------	--



FLOOR BOX DETAIL AS BLOCK D - SEE DETAIL B

THIS CABLEBOARD SHALL BE REMOVED.
ALL EXISTING CABLES FROM THE RUN EXTERNAL ROOM
THIS CABLEBOARD SHALL BE REMOVED.
ALL EXISTING EXTERNAL ACCESSORIES LIGHTING,
POWER & ETC. CABLES SHALL BE REMOVED.
ALL REDUNDANT ELECTRICAL EQUIPMENT SHALL BE
REMOVED FROM THIS CABLEBOARD
A NEW 8WAY, 17IN DISTRIBUTION BOARD (DB) SHALL BE
SPOOLED FROM THE EXISTING MAIN DISTRIBUTION
BOARD EXISTING IN THE CLOSET OFFICES AND FURTHER
REPLENISHMENT OF THE FIRST FLOOR GENERAL PUBLIC
TOILETS.
THE CABLEBOARD SHALL ALSO BE THE CONNECTION
POINT ANY ELEC SERVICES THAT A REQUIRE RELOCATION AS
REQUIRED DURING THE REMOVAL OF EXISTING ETC
CABLES, SUCH AS BI DATA, CCTV A FIREARM



- 1) Drawing and design Copyright.
- 2) Figured dimensions only are to be used.
- 3) All dimensions to be checked on site, differences between drawings and specification or bills of quantities to be referred to OPTIMA B.E.S. Ltd.

E1) ELECTRICAL SERVICES NOTES

The objective is to achieve a distribution solution to remove the Mechanical & Electrical services from the facade of Building C the Long Aables

The contractors shall sequence the works to limit the disruption to the retail units & the Cuban Bar.

E2) The contractor shall employ specialist contractors to relocate the existing services from the facade as indicated on OPTIMA B.E.S Ltd drawing E100 to ensure the transfer of existing services from the facade to the new internal containment system ducting and catenary links between buildings.

The systems are as follows:

- Data
- CCTV
- Intruder
- Intercom (if applicable)
- Extra low voltage cables
- Low voltage cabling
- Water services

Again to minimise disruption all cabling and connection box shall be installed before the isolation of the existing services.

E3) For indicative mains and sub circuit schematics see DBI above

E4) Containment and ducting details are indicative only. it is the responsibility of the contractor to liaise with the

specialist contractors & architect on final locations to ensure the OPTIMA B.E.S. Ltd specification requirements are achieved.

E5) All electrical shall be installed as per the requirements of BS 7671 IET Wiring Regulation and current amendments

E6) Any electrical services passing through fire compartment

shall be sleeved and sealed in accordance with applicable building regulations. All cable joints must be accessible.

E7) All cable sizes are indicative only. It is the responsibility of the electrical contractor to ensure the cabling is sized to

the requirements of BS 7671 IET Wiring Regulations and current amendments.

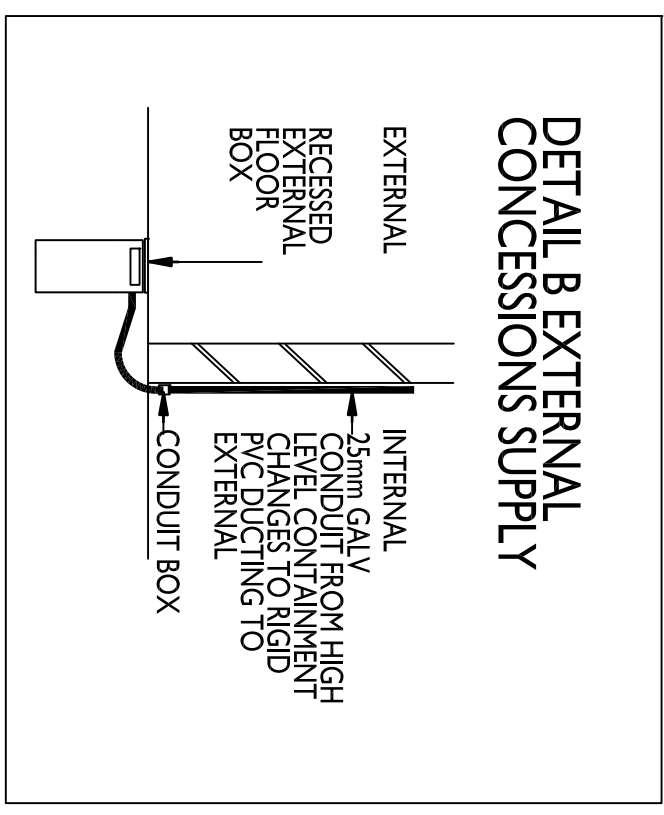
E8) CCTV - locations to be confirmed by the CCTV specialist company.

C7) File Admin - Locations to be committed by the File Admin specialist company.

E10) External lighting shall be wired in galvanised metal conduit and 6491b singles cable run internally within the building route the on site

1
2
3
4
5
6
7
8
9
10
11
12
13
14
15
16
17
18
19
20
21
22
23
24
25
26
27
28
29
30
31
32
33
34
35
36
37
38
39
40
41
42
43
44
45
46
47
48
49
50
51
52
53
54
55
56
57
58
59
60
61
62
63
64
65
66
67
68
69
70
71
72
73
74
75
76
77
78
79
80
81
82
83
84
85
86
87
88
89
90
91
92
93
94
95
96
97
98
99
100
101
102
103
104
105
106
107
108
109
110
111
112
113
114
115
116
117
118
119
120
121
122
123
124
125
126
127
128
129
130
131
132
133
134
135
136
137
138
139
140
141
142
143
144
145
146
147
148
149
150
151
152
153
154
155
156
157
158
159
160
161
162
163
164
165
166
167
168
169
170
171
172
173
174
175
176
177
178
179
180
181
182
183
184
185
186
187
188
189
190
191
192
193
194
195
196
197
198
199
200
201
202
203
204
205
206
207
208
209
210
211
212
213
214
215
216
217
218
219
220
221
222
223
224
225
226
227
228
229
230
231
232
233
234
235
236
237
238
239
240
241
242
243
244
245
246
247
248
249
250
251
252
253
254
255
256
257
258
259
260
261
262
263
264
265
266
267
268
269
270
271
272
273
274
275
276
277
278
279
280
281
282
283
284
285
286
287
288
289
290
291
292
293
294
295
296
297
298
299
300
301
302
303
304
305
306
307
308
309
310
311
312
313
314
315
316
317
318
319
320
321
322
323
324
325
326
327
328
329
330
331
332
333
334
335
336
337
338
339
340
341
342
343
344
345
346
347
348
349
350
351
352
353
354
355
356
357
358
359
360
361
362
363
364
365
366
367
368
369
370
371
372
373
374
375
376
377
378
379
380
381
382
383
384
385
386
387
388
389
390
391
392
393
394
395
396
397
398
399
400
401
402
403
404
405
406
407
408
409
410
411
412
413
414
415
416
417
418
419
420
421
422
423
424
425
426
427
428
429
430
431
432
433
434
435
436
437
438
439
440
441
442
443
444
445
446
447
448
449
450
451
452
453
454
455
456
457
458
459
460
461
462
463
464
465
466
467
468
469
470
471
472
473
474
475
476
477
478
479
480
481
482
483
484
485
486
487
488
489
490
491
492
493
494
495
496
497
498
499
500
501
502
503
504
505
506
507
508
509
510
511
512
513
514
515
516
517
518
519
520
521
522
523
524
525
526
527
528
529
530
531
532
533
534
535
536
537
538
539
540
541
542
543
544
545
546
547
548
549
550
551
552
553
554
555
556
557
558
559
560
561
562
563
564
565
566
567
568
569
570
571
572
573
574
575
576
577
578
579
580
581
582
583
584
585
586
587
588
589
590
591
592
593
594
595
596
597
598
599
600
601
602
603
604
605
606
607
608
609
610
611
612
613
614
615
616
617
618
619
620
621
622
623
624
625
626
627
628
629
630
631
632
633
634
635
636
637
638
639
640
641
642
643
644
645
646
647
648
649
650
651
652
653
654
655
656
657
658
659
660
661
662
663
664
665
666
667
668
669
670
671
672
673
674
675
676
677
678
679
680
681
682
683
684
685
686
687
688
689
690
691
692
693
694
695
696
697
698
699
700
701
702
703
704
705
706
707
708
709
710
711
712
713
714
715
716
717
718
719
720
721
722
723
724
725
726
727
728
729
730
731
732
733
734
735
736
737
738
739
740
741
742
743
744
745
746
747
748
749
750
751
752
753
754
755
756
757
758
759
760
761
762
763
764
765
766
767
768
769
770
771
772
773
774
775
776
777
778
779
780
781
782
783
784
785
786
787
788
789
790
791
792
793
794
795
796
797
798
799
800
801
802
803
804
805
806
807
808
809
810
811
812
813
814
815
816
817
818
819
820
821
822
823
824
825
826
827
828
829
830
831
832
833
834
835
836
837
838
839
840
84

ELECTRICAL SERVICES TO NEW
TOILET LAYOUT TO BE
DESIGNED TO BS7671
1ET CURRNT WIRING
REGULATIONS
BS5266 EMERGENCY LIGHTING
AND CURRENT BYUILDING
REULATIONS



PE OF HIGH LEVEL EXTERNAL LUMINAIRE
 (GUZZINI)
 AS BLOCK D
 (EXCEPT 25w LED VERSION)
 LED
 25w, 3200lm (Philpower)
 Luminous efficacy: (lm/watt): 107
 Neutral 4000K CR10
 Optic: ST 1,0 - road optics I = 4h / d = 1
 Adjustability: directional
 Control gear electronic inducted
 Material: die-cast aluminium alloy
 Size (mm): 380x352, Weight (kg): 10.50



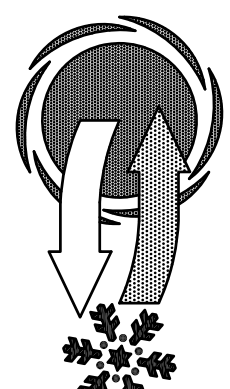
CityWoody > CityWoody wall mounted

12	14-08-15	LAYOUT UPDATED TO CURRENT ARCHITECTS DRAWINGS
11	14-04-15	ARCHITECTS COMMENTS ADDED
T	24-03-15	TENDER PROVISIONAL ISSUE
Rev	Date	Details
Client		

STANLEY SIDINGS

CAMDEN STABLES MARKET
LONDONBUILDING C
PROPOSED ELECTRICAL SERVICES

Scale 1:75 © A1	Date 11/03/15	Drawn TA	Checked DB
-----------------------	------------------	-------------	---------------



OPTIMA B.E.S. LTD
*Building Environmental
Solutions*
HIGHCLERE, 34 ABBOTS ROAD
ABBOTS LANGLEY, HERTS, WD5 0AZ
TEL: 01923 267107 FAX: 01923 270223
E-mail: OptimaBES@aol.com

Job No.	Drawing No.	Revision
AP297	E200	T2