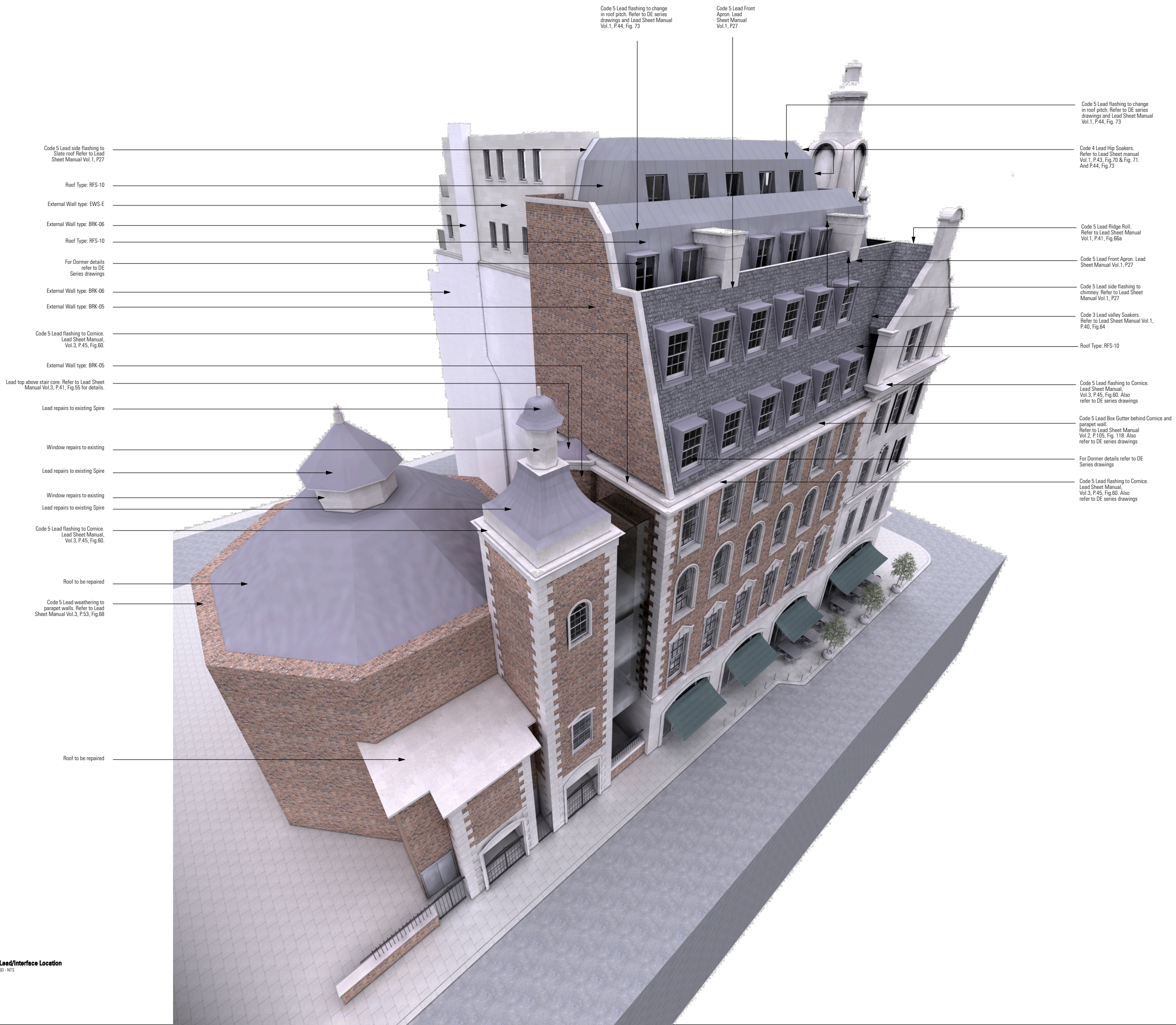


Information contained within this drawing is the sole copyright of HODA Ltd, and is not to be reproduced without express permission. No implied licence exists. This drawing is not to be used for land transfer or valuation purposes. Do not scale from this drawing. All dimensions & levels are to be checked on site by the contractor. Issued for purposes indicated only. Drawing errors and omissions to be reported to the architect.

Notes



Code 5 Lead side flashing to Slate roof Refer to Lead Sheet Manual Vol.1, P27

Roof Type: RFS-10

External Wall type: EWS-E

External Wall type: BRK-06

Roof Type: RFS-10

For Dormer details refer to DE Series drawings

External Wall type: BRK-06

External Wall type: BRK-05

Code 5 Lead flashing to Cornice. Lead Sheet Manual, Vol.3, P.45, Fig.60.

External Wall type: BRK-05

Lead top above stair core. Refer to Lead Sheet Manual Vol.3, P.41, Fig.55 for details.

Lead repairs to existing Spire

Window repairs to existing

Lead repairs to existing Spire

Window repairs to existing

Lead repairs to existing Spire

Code 5 Lead flashing to Cornice. Lead Sheet Manual, Vol.3, P.45, Fig.60.

Roof to be repaired

Code 5 Lead weathering to parapet walls. Refer to Lead Sheet Manual Vol.3, P.53, Fig.68

Roof to be repaired

Code 5 Lead flashing to change in roof pitch. Refer to DE series drawings and Lead Sheet Manual Vol.1, P.44, Fig. 73

Code 5 Lead Front Apron. Lead Sheet Manual Vol.1, P27

Code 5 Lead flashing to change in roof pitch. Refer to DE series drawings and Lead Sheet Manual Vol.1, P.44, Fig. 73

Code 4 Lead Hip Soakers. Refer to Lead Sheet manual Vol.1, P.43, Fig.70 & Fig. 71. And P.44, Fig. 73

Code 5 Lead Ridge Roll. Refer to Lead Sheet Manual Vol.1, P.41, Fig.66a

Code 5 Lead Front Apron. Lead Sheet Manual Vol.1, P27

Code 5 Lead side flashing to chimney. Refer to Lead Sheet Manual Vol.1, P27

Code 3 Lead valley Soakers. Refer to Lead Sheet Manual Vol.1, P.40, Fig.64

Roof Type: RFS-10

Code 5 Lead flashing to Cornice. Lead Sheet Manual, Vol.3, P.45, Fig.60. Also refer to DE series drawings

Code 5 Lead Box Gutter behind Cornice and parapet wall. Refer to Lead Sheet Manual Vol.2, P.105, Fig. 118. Also refer to DE series drawings

For Dormer details refer to DE Series drawings

Code 5 Lead flashing to Cornice. Lead Sheet Manual, Vol.3, P.45, Fig.60. Also refer to DE series drawings

C1 Issued for Construction 27.01.14

Revisions

CONSTRUCTION

HARPER DOWNIE
CREATIVE ARCHITECTURE

Gato House
1 St John's Square
London EC1M 4DH
T +44 20 7490 7674
studio@harpdownie.com
www.harpdownie.com

Client: Havza Ltd

Project: 2-6 Southampton Row

Drawing Title: Lead/Roof interface Location Sheet 02

Status	Drawn	Checked
Construction	SS	MM
Scale	Date	
NTS	Jan 2014	
Drwg. No.	Revision	
586 dE002	C1	

A Lead/Interface Location
30-NTS