

TRIAL PIT LOCATION

The purpose of the Trial Holes is to excavate to locate depth and position of existing foundations.

Include for any breaking out and full reinstatement upon completion and inspection by the engineer.

Method of forming the holes should be assessed by the contractor at tender stage and any assumptions listed when returning the price.

Allowance is to be made for all health and safety measures necessary to ensure safety of personnel and stability of the structures/ground.

Method statements should be issued for approval of the SO prior to commencement.

The size of the trial hole should be the minimum required for inspection assume 0.75m square.

Allow for leaving all clean and tidy upon completion with all surplus material to be disposed of off site in an approved manner.

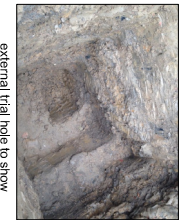
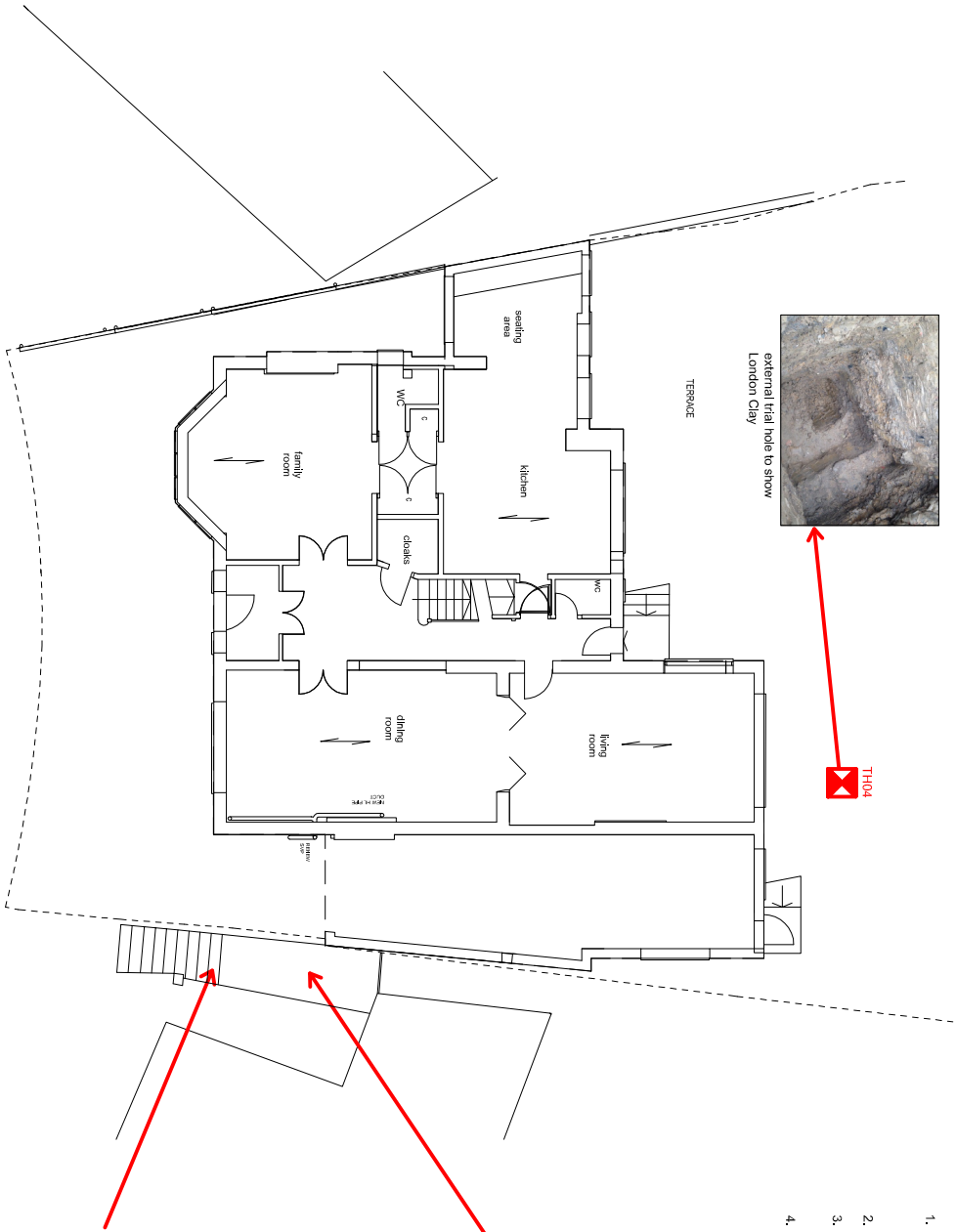
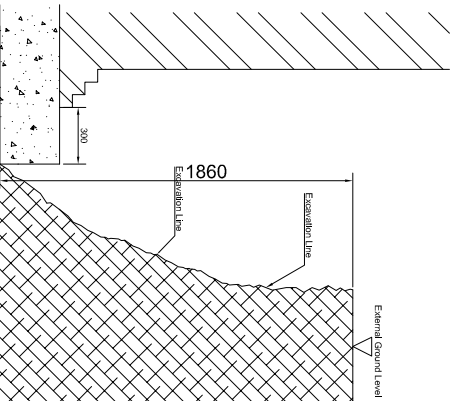
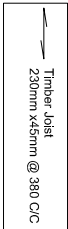
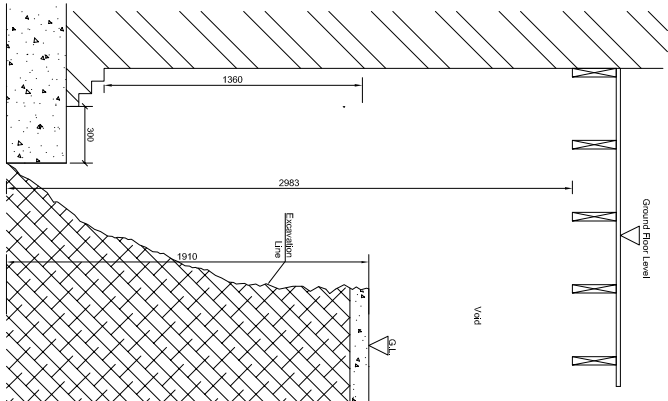
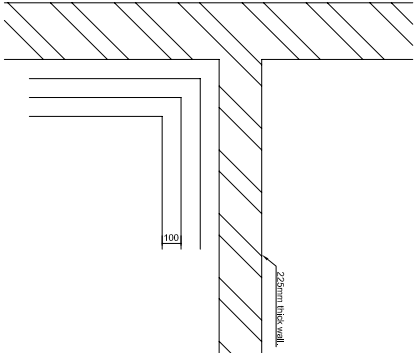
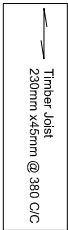
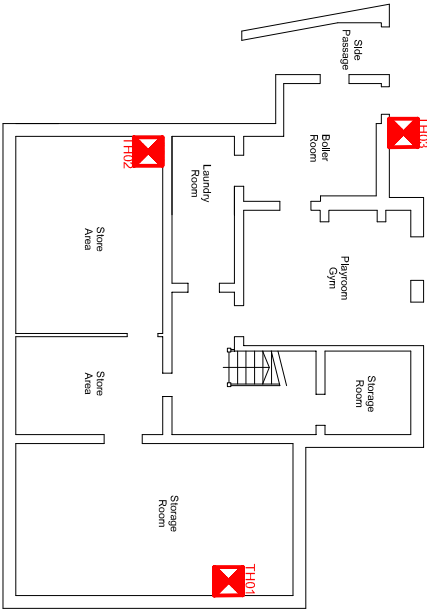
The contractor should take all reasonable steps to prevent damage to the existing services, his operatives and the general public.

Safety barriers are to be provided to prevent public access to the area of the works

The contractor shall provide all necessary plant to allow the excavations to be carried out safely.

Where mechanical diggers are used the Contractor shall allow for suitably qualified personnel to prevent damage to existing services and operatives.

After completion of the trenches they are to be back filled with excavated materials.



1. This Drawing to be read in conjunction with all other Engineers, Architects and Specialists drawings and specifications.
2. No dimensions are to be scaled from this drawing.
3. No deviation may be made from the details shown on this drawing without prior agreement of the Engineers.
4. Any discrepancy between this drawing and any other document should be referred immediately to the Engineer.



Ref.	A	Additional site investigation added	NB	20.07.15
Revisions	By	Date		

1Ranulf Road
London

Site Investigation and Details



Scale at A1	Date	Drawn By	
1:100	21/10/14	AK	
Project No.	Dwg No.		Rev.
8776	TH01		A