

- General Notes**
- A. This drawing is confidential and the exclusive property of McCrory Access Solutions Ltd. No unauthorized use, copy or disclosure is to be made and it is to be returned upon request.
 - B. All services, plant, equipment, and materials supplied are subject to our conditions of contract, hire or sale as applicable.
 - C. This drawing has been prepared from details supplied to us by the enquirer/client, who should check that we have correctly interpreted his requirements and that all loadings, dimensions, details, erection and striking sequences are correct and practicable. No alteration in the loading may be made without reference to McCrory Access Solutions Ltd.
 - D. The client is prepare and ensure that the foundations are suitable for supporting the loads imposed upon it by our scaffold including its work load.
 - E. No sheeting whatsoever, unless already shown, will be added to the scaffold without reference to McCrory Access Solutions Ltd.
 - F. It is the responsibility of the enquirer/client to ensure that adequate facilities for tying the scaffold are made available and that the building or structure is capable of withstanding the loads applied to it by the scaffold and its working load.
 - G. No ties or braces are to be removed or any modifications to be made to the scaffold without reference to, and approval from, McCrory Access Solutions Ltd.
 - H. The enquirer/client is to design, supply and fix all necessary auxiliary equipment, including not limited to, shuttering, timber, bearers, steel joists and to ensure that such auxiliary equipment is capable of safely transmitting the loads to the standards.
 - I. The enquirer/client will be responsible for the setting out and final leveling of scaffolding or similar equipment used as a system of support.
 - J. All dimensions are as stated or as calculated. Drawings must not be scaled.
 - K. This drawing has been prepared on the assumption that all loads will be applied axially to the tubes unless specially stated otherwise.
- The Scaffold has been designed in accordance with TG20:08 with reference to BS6399 part II for wind loading.

SPECIAL NOTES

NOTE SCAFFOLD HAS BEEN DESIGNED FOR A MAXIMUM IMPOSED LOAD OF 2.0kN/m² ON ONE NUMBER WORKING LIFT PLUS ONE FURTHER LIFT WITH A MAXIMUM IMPOSED LOAD OF 1.0kN/m² FOR LIGHT DUTIES - ALL INSIDE BOARDS HAVE A MAXIMUM IMPOSED LOAD OF 0.75kN/m²

Not for construction until over printed working drawing

WORKING DRAWING

tubular techniques limited

SCAFFOLDING AND TEMPORARY WORKS DESIGN.

137b High Street,
Tonbridge,
Kent, TN9 1DH
T. 01732 370300
F. 01732 361332

E. tubulartech@btconnect.com
W. tubulartech@btconnect.com
W. scaffolddesigners.co.uk



TITLE

Proposed details for access scaffold on
Block F, West Hampstead Square, London

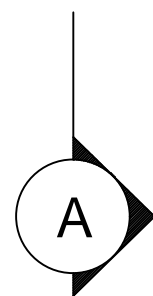
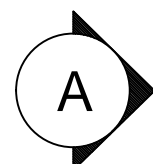
DRAWN BY J P Savage	CHECKED BY Keith Drewett	DATE 30.06.14
SCALE • A1 1:40	DRAWING No 4092-14-01	

Ground Floor Plan
(Scale 1:40)

MAIN CONTRACTOR

1. TO APPROVE LAYOUT AND LOADINGS ALLOWED BEFORE SCAFFOLD ERECTION
2. TO ENSURE THE BASE, GROUND, BUILDING FENESTRATIONS ARE CAPABLE OF ACCEPTING ALL IMPOSED LOADS

REV'N	AMENDMENTS	DATE	AMENDED BY	CHECKED BY
-------	------------	------	------------	------------



INDICATES STEEL PAN BOARDS TO BE USED AS DECKING ON EVERY WORKING LIFT

KWIK STAGE SCAFFOLDING TO BE TIED TOGETHER ON EVERY LIFT USING TUBE AND FITTING WHERE NECESSARY

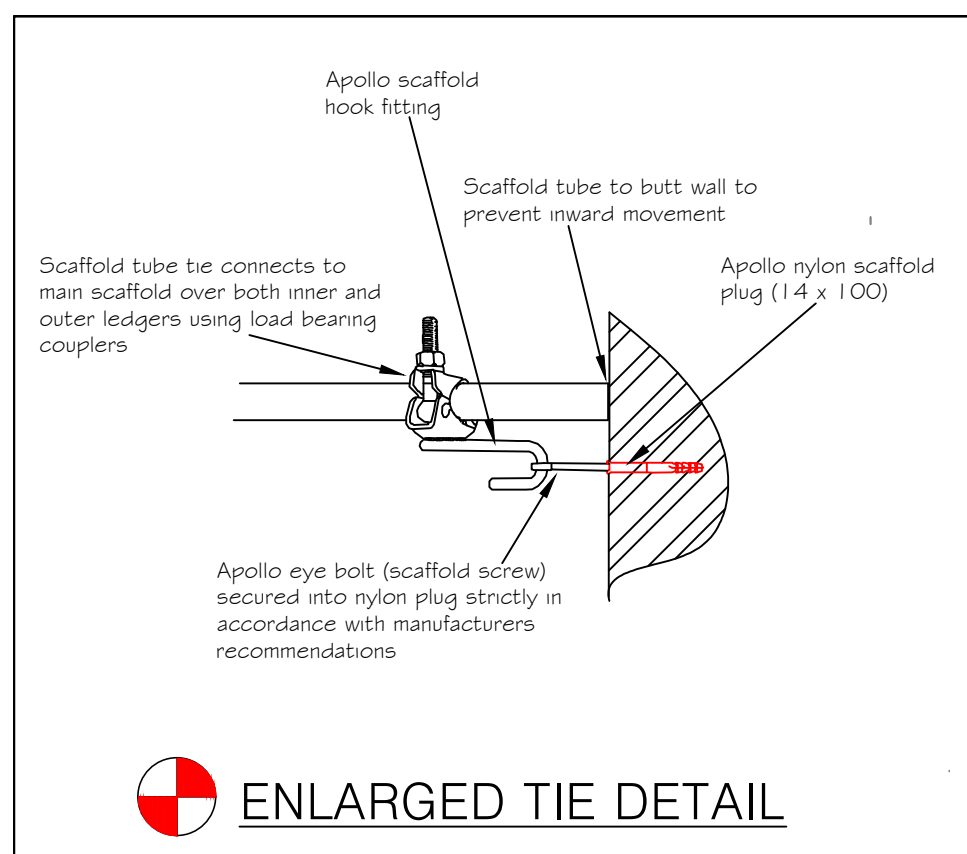
KWIK STAGE SCAFFOLDING TO BE TIED TOGETHER ON EVERY LIFT USING TUBE AND FITTING WHERE NECESSARY

RED ICONS INDICATE TIE LOCATIONS INTO EXISTING STRUCTURE. PLEASE REFER TO ENLARGED DETAIL FOR CLARITY

KWIK STAGE SCAFFOLDING TO BE TIED TOGETHER ON EVERY LIFT USING TUBE AND FITTING WHERE NECESSARY

INDICATES STEEL PAN BOARDS TO BE USED AS DECKING ON EVERY WORKING LIFT

KWIK STAGE SCAFFOLDING TO BE TIED TOGETHER ON EVERY LIFT USING TUBE AND FITTING WHERE NECESSARY



18.60 kN
MAXIMUM
LEG LOAD

5.00 kN
PROOF TIE
TEST LOAD

Sixth Floor Plan

(Scale 1:40)

MAIN CONTRACTOR

1. TO APPROVE LAYOUT AND LOADINGS ALLOWED BEFORE SCAFFOLD ERECTION
2. TO ENSURE THE BASE, GROUND, BUILDING FENESTRATION'S ARE CAPABLE OF ACCEPTING ALL IMPOSED LOADS

General Notes

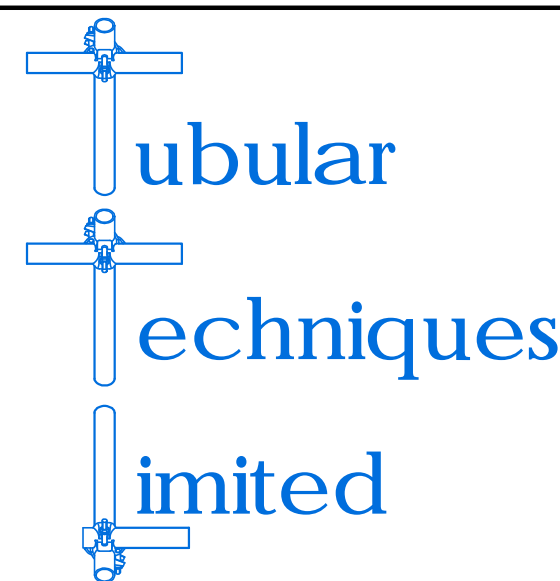
- A. This drawing is confidential and the exclusive property of McCrory Access Solutions Ltd. No unauthorized use, copy or disclosure is to be made and it is to be returned upon request.
 - B. All services, plant, equipment, and materials supplied are subject to our conditions of contract, hire or sale as applicable.
 - C. This drawing has been prepared from details supplied to us by the enquirer/client, who should check that we have correctly interpreted his requirements and that all loadings, dimensions, details, erection and striking sequences are correct and practicable. No alteration in the loading may be made without reference to McCrory Access Solutions Ltd.
 - D. The client is prepare and ensure that the foundations are suitable for supporting the loads imposed upon it by our scaffold including its work load.
 - E. No sheeting whatsoever, unless already shown, will be added to the scaffold without reference to McCrory Access Solutions Ltd.
 - F. It is the responsibility of the enquirer/client to ensure that adequate facilities for tying the scaffold are made available and that the building or structure is capable of withstanding the loads applied to it by the scaffold and its working load.
 - G. No ties or braces are to be removed or any modifications to be made to the scaffold without reference to, and approval from, McCrory Access Solutions Ltd.
 - H. The enquirer/client is to design, supply and fix all necessary auxiliary equipment, including not limited to, shuttering, timber, bearers, steel joists and to ensure that such auxiliary equipment is capable of safely transmitting the loads to the standards.
 - I. The enquirer/client will be responsible for the setting out and final leveling of scaffolding or similar equipment used as a system of support.
 - J. All dimensions are as stated or as calculated. Drawings must not be scaled.
 - K. This drawing has been prepared on the assumption that all loads will be applied axially to the tubes unless specially stated otherwise.
- The Scaffold has been designed in accordance with TG20:08 with reference to BS6399 part II for wind loading.

SPECIAL NOTES

NOTE SCAFFOLD HAS BEEN DESIGNED FOR A MAXIMUM IMPOSED LOAD OF 2.0kN/m² ON ONE NUMBER WORKING LIFT PLUS ONE FURTHER LIFT WITH A MAXIMUM IMPOSED LOAD OF 1.0kN/m² FOR LIGHT DUTIES - ALL INSIDE BOARDS HAVE A MAXIMUM IMPOSED LOAD OF 0.75kN/m²

Not for construction until over printed working drawing

WORKING DRAWING



SCAFFOLDING AND TEMPORARY WORKS DESIGN.

137b High Street,
Tonbridge,
Kent, TN9 1DH
T. 01732 370300
F. 01732 361332

E. tubulartech@btconnect.com
W. tubulartech@btconnect.com
W. scaffolddesigners.co.uk

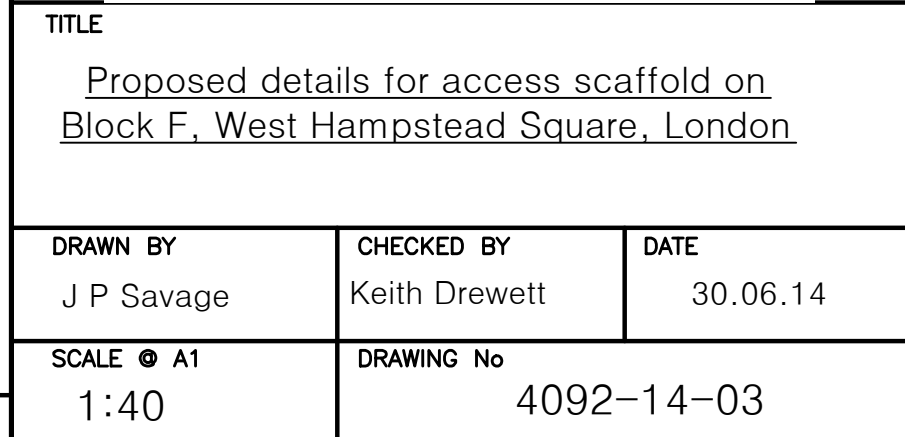


TITLE

Proposed details for access scaffold on
Block F, West Hampstead Square, London

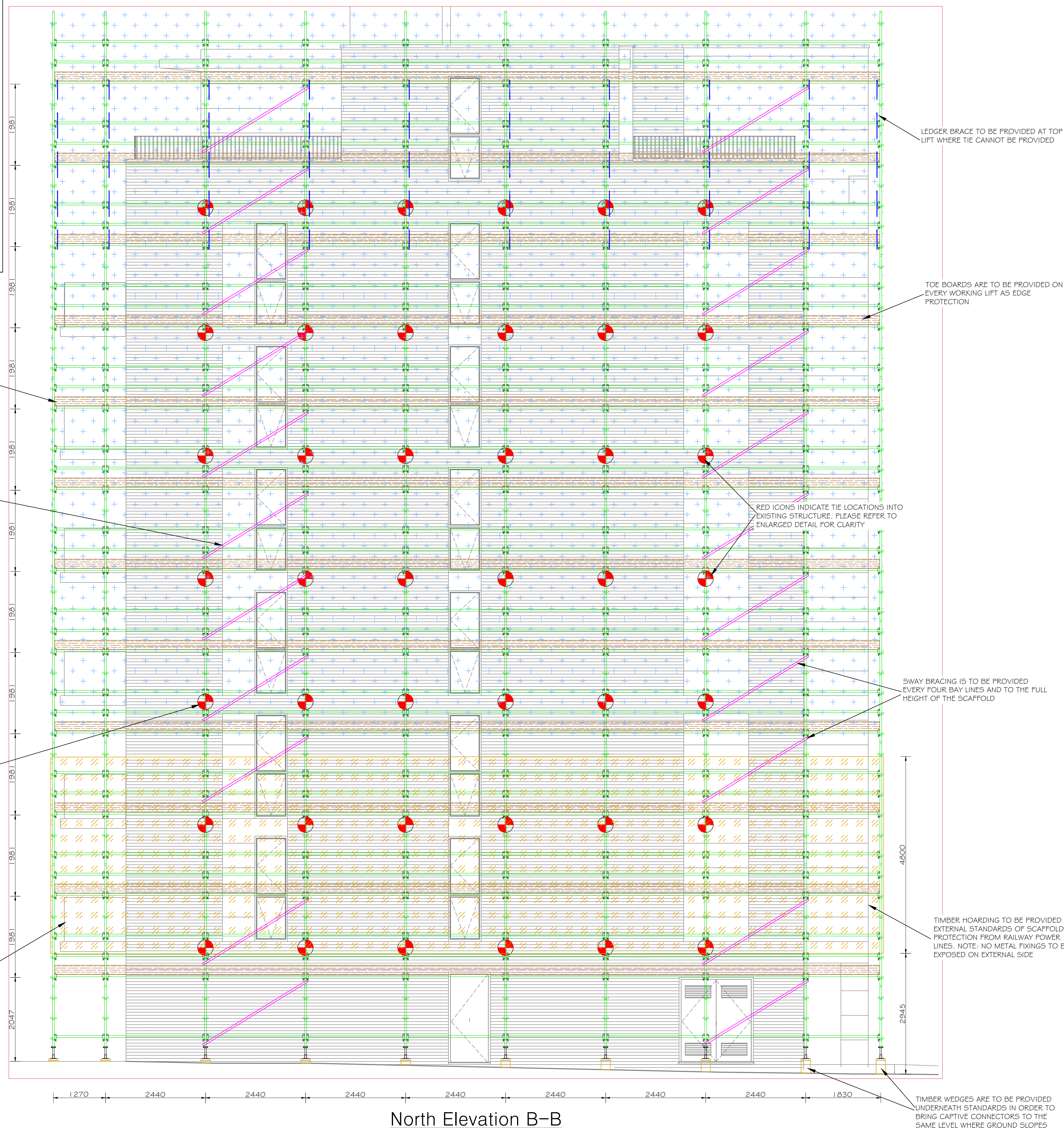
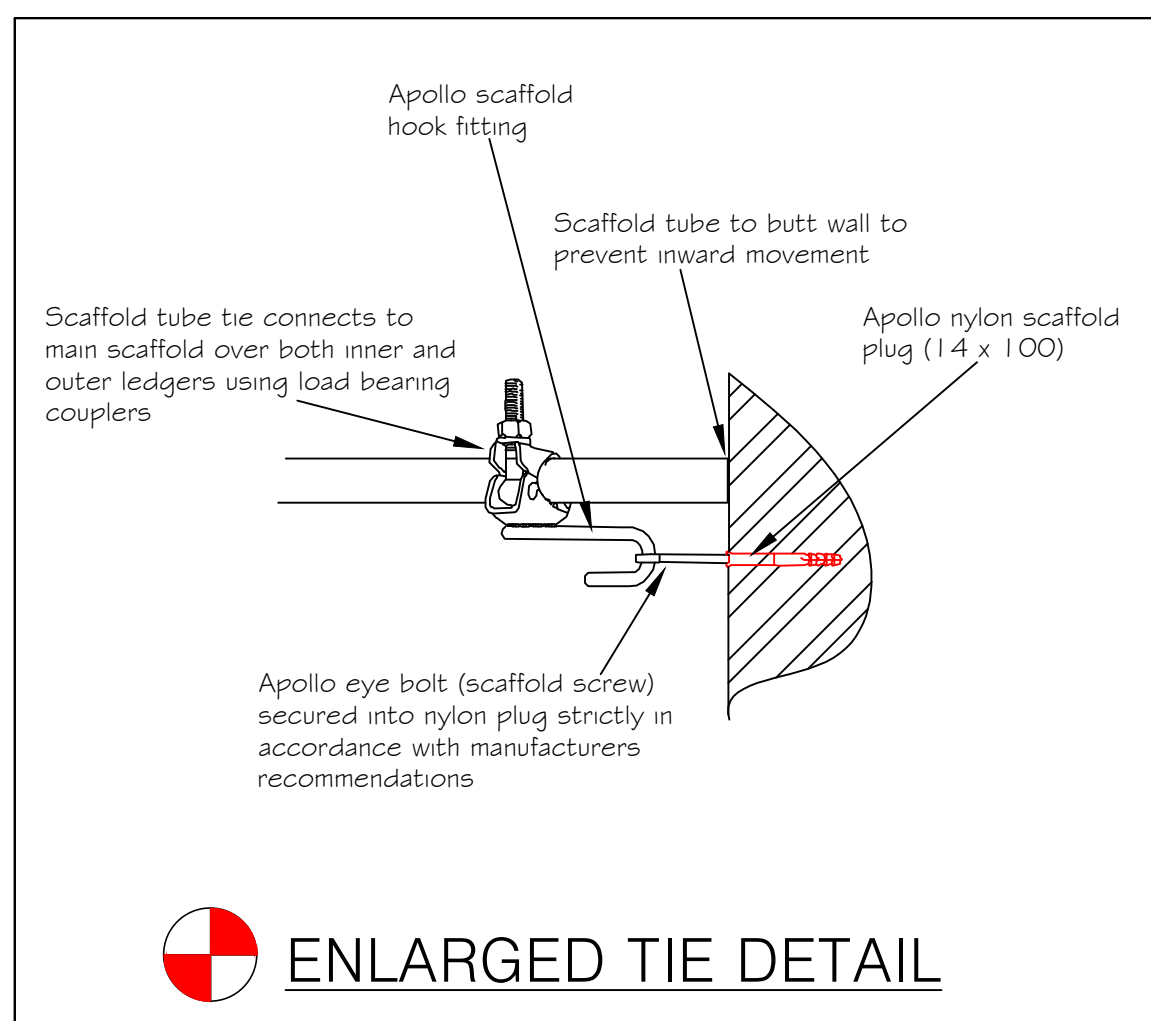
DRAWN BY	CHECKED BY	DATE
J P Savage	Keith Drewett	30.06.14
SCALE	DRAWING No	
1:40	4092-14-02	

REV	N	AMENDMENTS	DATE	AMENDED BY	CHECKED BY
-----	---	------------	------	------------	------------



Typical Section
(Scale 1:50)

REV'N	AMENDMENTS	DATE	AMENDED BY	CHECKED BY
-------	------------	------	------------	------------



18.60 kN
MAXIMUM
LEG LOAD

5.00 kN
PROOF TIE
TEST LOAD

General Notes

- A. This drawing is confidential and the exclusive property of McCrory Access Solutions Ltd. No unauthorized use, copy or disclosure is to be made and it is to be returned upon request.
 - B. All services, plant, equipment, and materials supplied are subject to our conditions of contract, hire or sale as applicable.
 - C. This drawing has been prepared from details supplied to us by the enquirer/client, who should check that we have correctly interpreted his requirements and that all loadings, dimensions, details, erection and striking sequences are correct and practicable. No alteration in the loading may be made without reference to McCrory Access Solutions Ltd.
 - D. The client is prepare and ensure that the foundations are suitable for supporting the loads imposed upon it by our scaffold including its work load.
 - E. No shoring whatsoever, unless already shown, will be added to the scaffold without reference to McCrory Access Solutions Ltd.
 - F. It is the responsibility of the enquirer/client to ensure that adequate facilities for tying the scaffold are made available and that the building or structure is capable of withstanding the loads applied to it by the scaffold and its working load.
 - G. No ties or braces are to be removed or any modifications to be made to the scaffold without reference to, and approval from, McCrory Access Solutions Ltd.
 - H. The enquirer/client is to design, supply and fix all necessary auxiliary equipment, including not limited to, shuttering, timber, bearers, steel joists and to ensure that such auxiliary equipment is capable of safely transmitting the loads to the standards.
 - I. The enquirer/client will be responsible for the setting out and final leveling of scaffolding or similar equipment used as a system of support.
 - J. All dimensions are as stated or as calculated. Drawings must not be scaled.
 - K. This drawing has been prepared on the assumption that all loads will be applied axially to the tubes unless specially stated otherwise.
- The Scaffold has been designed in accordance with TG20:08 with reference to BS6399 part II for wind loading.

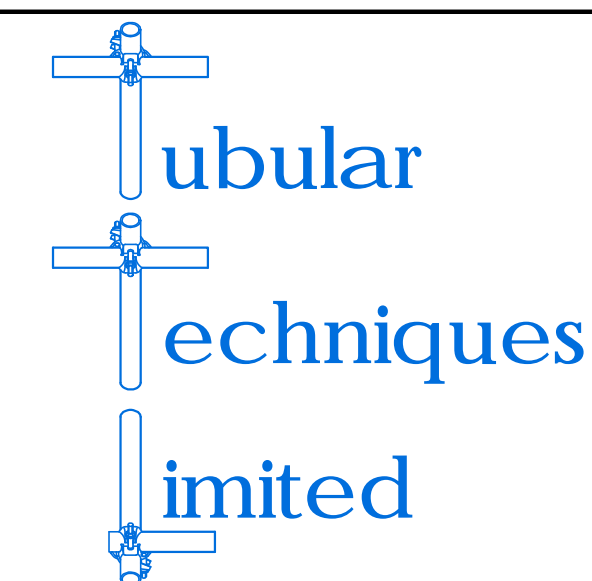
SPECIAL NOTES

NOTE SCAFFOLD HAS BEEN DESIGNED FOR A MAXIMUM IMPOSED LOAD OF 2.0kN/m² ON ONE NUMBER WORKING LIFT PLUS ONE FURTHER LIFT WITH A MAXIMUM IMPOSED LOAD OF 1.0kN/m² FOR LIGHT DUTIES - ALL INSIDE BOARDS HAVE A MAXIMUM IMPOSED LOAD OF 0.75kN/m²

NOTE: SCAFFOLD TO BE CLAD USING DEBRIS
NET CLADDING AND WILL BE FIXED STRICTLY IN
ACCORDANCE WITH MANUFACTURERS
RECOMMENDATIONS

Not for construction until over printed working drawing

WORKING DRAWING



SCAFFOLDING AND TEMPORARY WORKS DESIGN.

137b High Street,
Tonbridge,
Kent, TN9 1DH
T. 01732 370300
F. 01732 361332

E. tubulartech@btconnect.com
W. tubulartecniquesltd.co.uk
W. scaffolddesigners.co.uk



TITLE

Proposed details for access scaffold on
Block F, West Hampstead Square, London

DRAWN BY

J P Savage

DATE	30.06.14
------	----------

SCALE @ A

1:40

	DRAWING No
--	------------

4092-14-06

REV'N	AMENDMENTS	DATE	AMENDED BY	CHECKED BY
-------	------------	------	------------	------------