

15 Akenside Road, London, NW3 5BT.

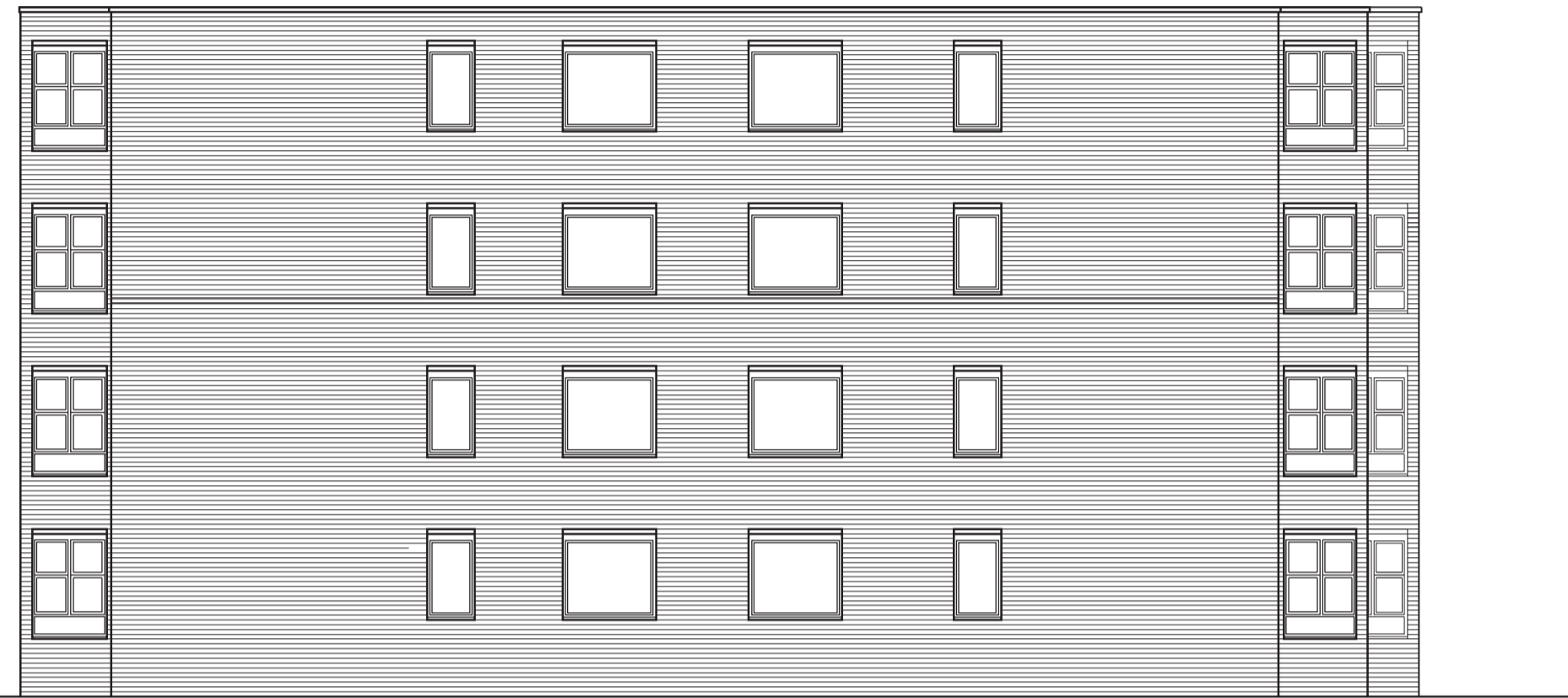
Approved elevations and window details

NOTES

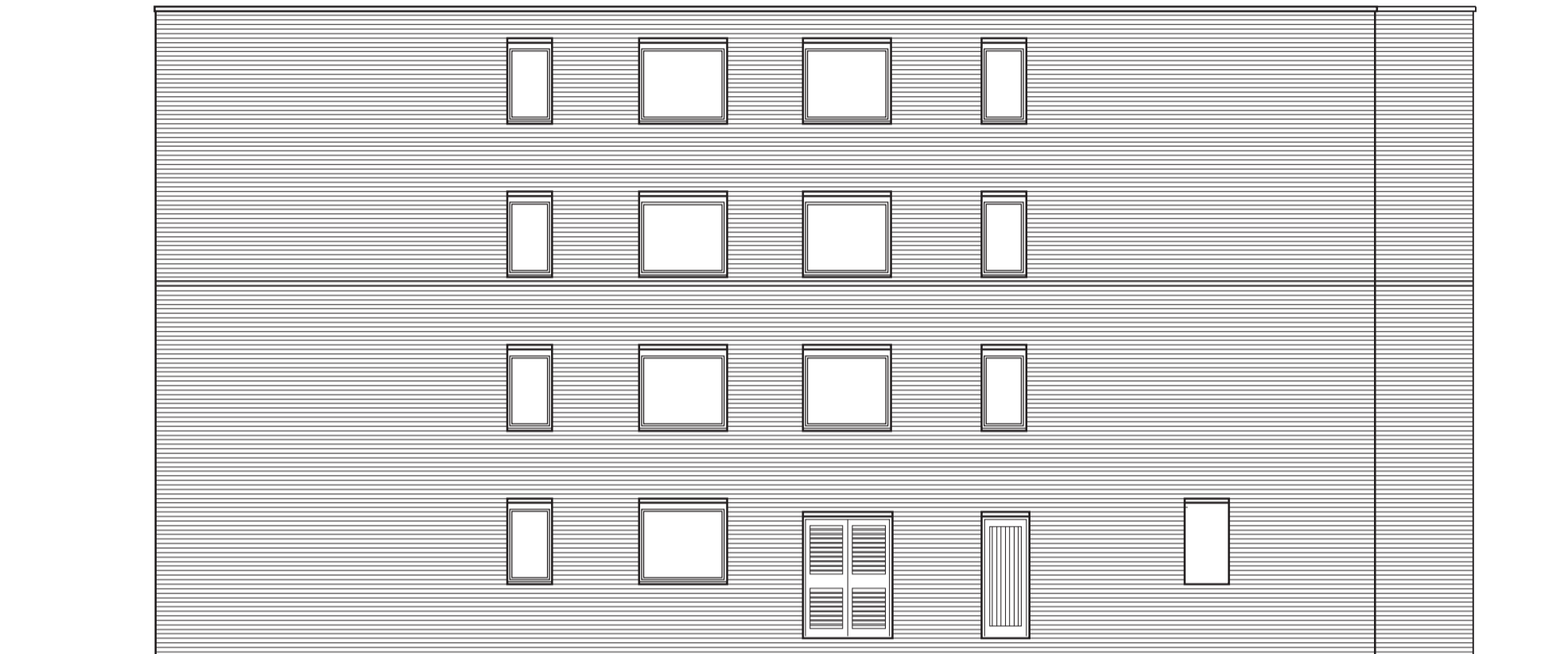
DO NOT SCALE FROM DRAWINGS.
MEASURE ON SITE.

READ INCONJUNCTION WITH
SPECIFICATION, AND OTHER
DRAWINGS.

EXTERNAL FINISHES TO BE:



FLANK ELEVATION

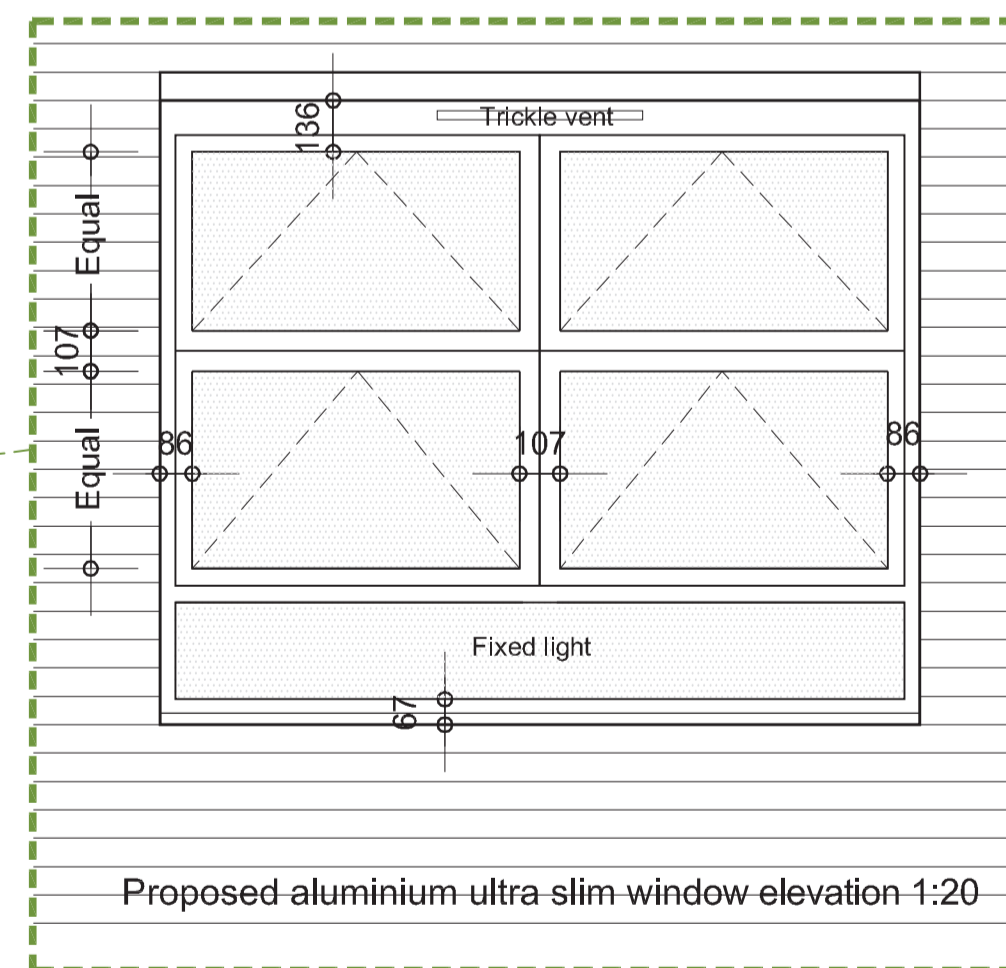


FLANK ELEVATION



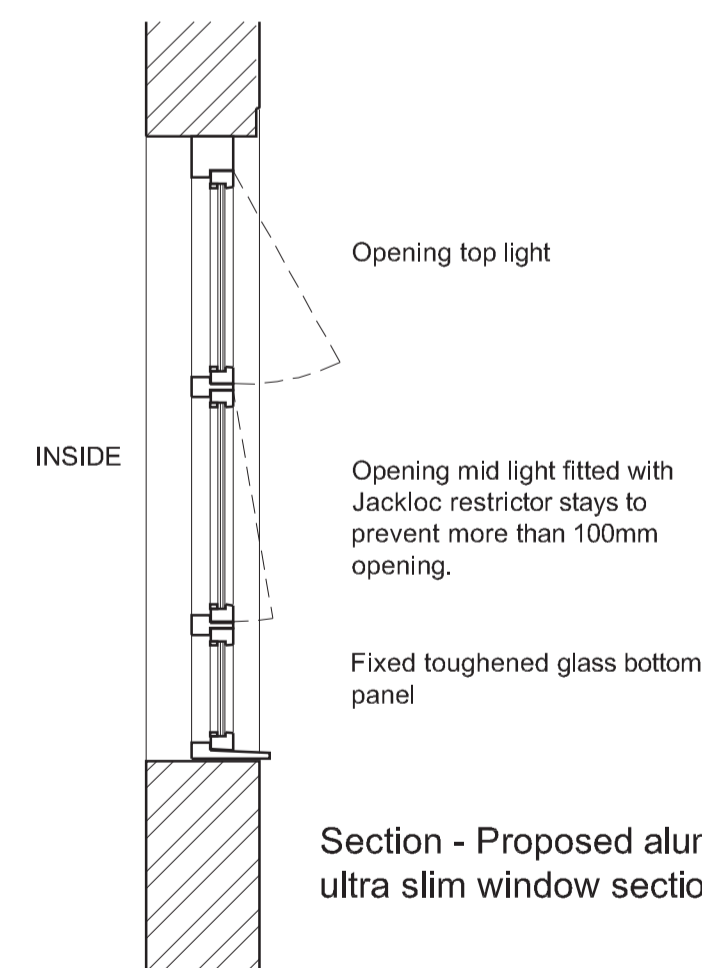
FRONT ELEVATION

See enlarged detail for entrance screen on drawing WDP 006. Building name and manifestations to be applied to fixed etched glazed panel.



Proposed aluminium ultra-slim window elevation 4:20

'Planning permission granted for replacement of all windows using ultra-slim coated aluminium ref: 2014/7858/P dated 16th February 2015. This application refers to the change of design only to the front and rear elevation reception windows to improve health and safety and ventilation issues'.



Section - Proposed aluminium ultra slim window section 1:20



REAR ELEVATION

See enlarged detail for entrance screen on drawing WDP 006.

Rev D - Final planning update 10.03.15
Rev C - Windows details updated 01.03.15
Rev B - Windows details added 13.02.15
Rev A - Windows shown as existing 07.02.15

MORFIELD EVEREST

Chartered Building Surveyors
Merrybrook Studio Tel 01644 882200
Bromwood Lane
Bohney
West Sussex
BN17 5JG Fax 01644 882211

PROJECT NAME
15 Akenside Road, London

PROJECT No
AR

SCALE 1:100 @ A1
CHK'D RT

DRAWING NAME
Approved elevations and window details

DWG No WDP 007
REV No D