

EXAMPLE OF HARDWOOD
TIMBER PRIVACY SCREEN



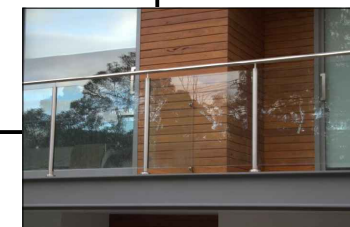
MARSHALLS TEGULA PRIORA
PAVING; PENNANT GREY



MARSHALLS TEGULA PRIORA
PAVING; HARVEST



EXAMPLE OF PARKING BAY
DEMARICATION



EXAMPLE OF TYPICAL GLASS
BALUSTRADE

This drawing is the property of Bradley Murphy Design Ltd. Copyright is reserved by them and the drawing is issued on the condition that it is not copied, reproduced, retained nor disclosed to any unauthorized person either wholly or in part without the consent of Bradley Murphy Design Ltd.

- EXISTING 1.9M WALL RETAINED
- EXISTING WALL RETAINED.
HEIGHT VARIES
- EXISTING WALL RETAINED
- 1.8M PROPOSED CLOSE BOARD
FENCE WITH GATE
- 1.8M HARDWOOD TIMBER
PRIVACY SCREEN
- KINLEY SYSTEM LTD ALUExcel
HI-GRADE STAINLESS STEEL
EDGING; 10MMX280MM; 3M
LENGTHS
- MARSHALLS TEGULA PAVING
PENNANT GREY (MEDIUM UNIT)
160X160X80MM LAID AS A
SOLDIER COURSE BORDER TO
TEGULA PAVING
- MARSHALLS TEGULA PRIORA
PENNANT GREY (SMALL, MEDIUM
AND LARGE UNIT)
160X120X80MM
160X160X80MM
160X240X80MM
LAID RANDOM COURSE
- MARSHALLS TEGULA PRIORA
HARVEST (SMALL, MEDIUM AND
LARGE UNIT)
160X120X80MM
160X160X80MM
160X240X80MM
LAID RANDOM COURSE
- MARSHALLS TEGULA PRIORA
WHITE 160 X 120 X 80MM TO
DEMARICATE PARKING BAYS
- 1.2M TOUGHENED GLASS
BALUSTRADE TO RETAINING
WALL. RETAINING WALL AND
STEPS TO ARCHITECTS DETAILS
- BINS - REFER ARCHITECTS PLAN

Rev	Description	Date
B	Updated to comments received	24.08.15
A	Updated to comments received	14.08.15

DISCHARGE OF CONDITIONS

Bradley Murphy Design Ltd
1 The Courtyard
Hatton Technology Park
Dark Lane
Hatton
Warwickshire
CV35 8XB

t: 01926 676496
e: info@bradleymurphydesign.co.uk
www.bradleymurphydesign.co.uk



Client
**SUSSEX HOUSE
DEVELOPMENT LTD**

Project
FINCHLEY ROAD, LONDON, NW3

Drawing Title
HARDWORKS PLAN

Drawn	Checked	Approved	Date
SB	LB	LB	AUG 2015
Job No. 15.021	Scale 1:500	Sheet Size A3	Revision B
Drawing Number BMD.15.020.DR.002			

LOOK LEFT

LOOK LEFT

