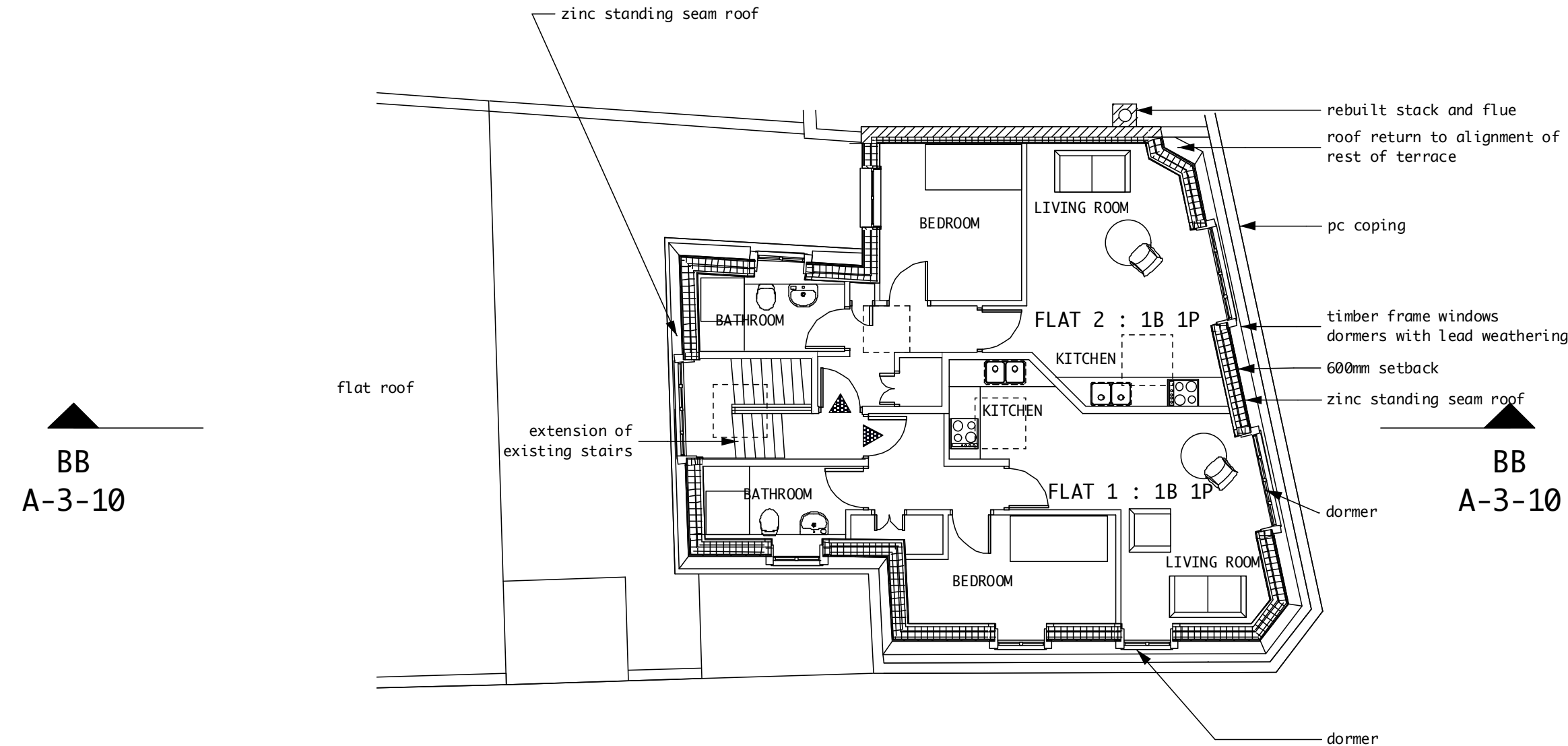
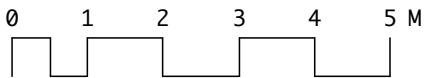


F1-bedroom(v5)	8.1 sqm
F1-living(v5)	17.9 sqm
F1-store(v5)	1.1 sqm
F1-TOTAL(v5)	36.9 sqm

F2-bedroom(v5)	9.0 sqm
F2-living(v5)	17.0 sqm
F2-store(v5)	1.0 sqm
F2-TOTAL(v5)	38.0 sqm



1 proposed third floor plan
Scale: 1:100



1 All dimensions to be checked on site
2 All discrepancies to be reported to architect or contract administrator immediately
3 Components to be fitted to the manufacturers requirements unless otherwise stated in writing
4 All demolitions to be confirmed by SE
5 All work to DS/SE requirements
6 All items supply & fit by contractor unless otherwise stated
copyright for this drawing belongs to Tom Young Architects and may not be assigned to any other person or organization without TYA's written agreement

REVISIONS		
A	16/4/14	Planning Validation requirements
B	25/7/14	discussion w LBC
C	17/6/15	poss rvns to LBC rqmts
D	20/7/15	rvsn rqstd LBC 17-7-15

PROJECT TITLE	
139-141 Queens Crescent	
JOB NUMBER	1308
STAGE	D
SCALE	1:100@A3
DATE	17/6/15
ISSUE	Neil Collins
CAD-FILE	1308-D.mcd

DISCIPLINE	
A	= architectural
S	= structural
M	= mechanical
E	= electrical
SERIES	
0	cover sheet
1	site, roof, floor plans
2	elevations
3	sections
4	enlarged plans, elevations & sections
5	details
6	schedules
7	views
8	other

STAGE	
feas	= feasibility
des	= design
pin	= planning
bc	= bdg control
tend	= tender
con	= contract
man	= manual
discipline	series
A	01

TOM YOUNG ARCHITECTS

19 Bassett St
London NW5 4PG
t_020 7482 6150
m_07765 378 502
e_thdyoung@mac.com

proposed third floor
- 2 new flats