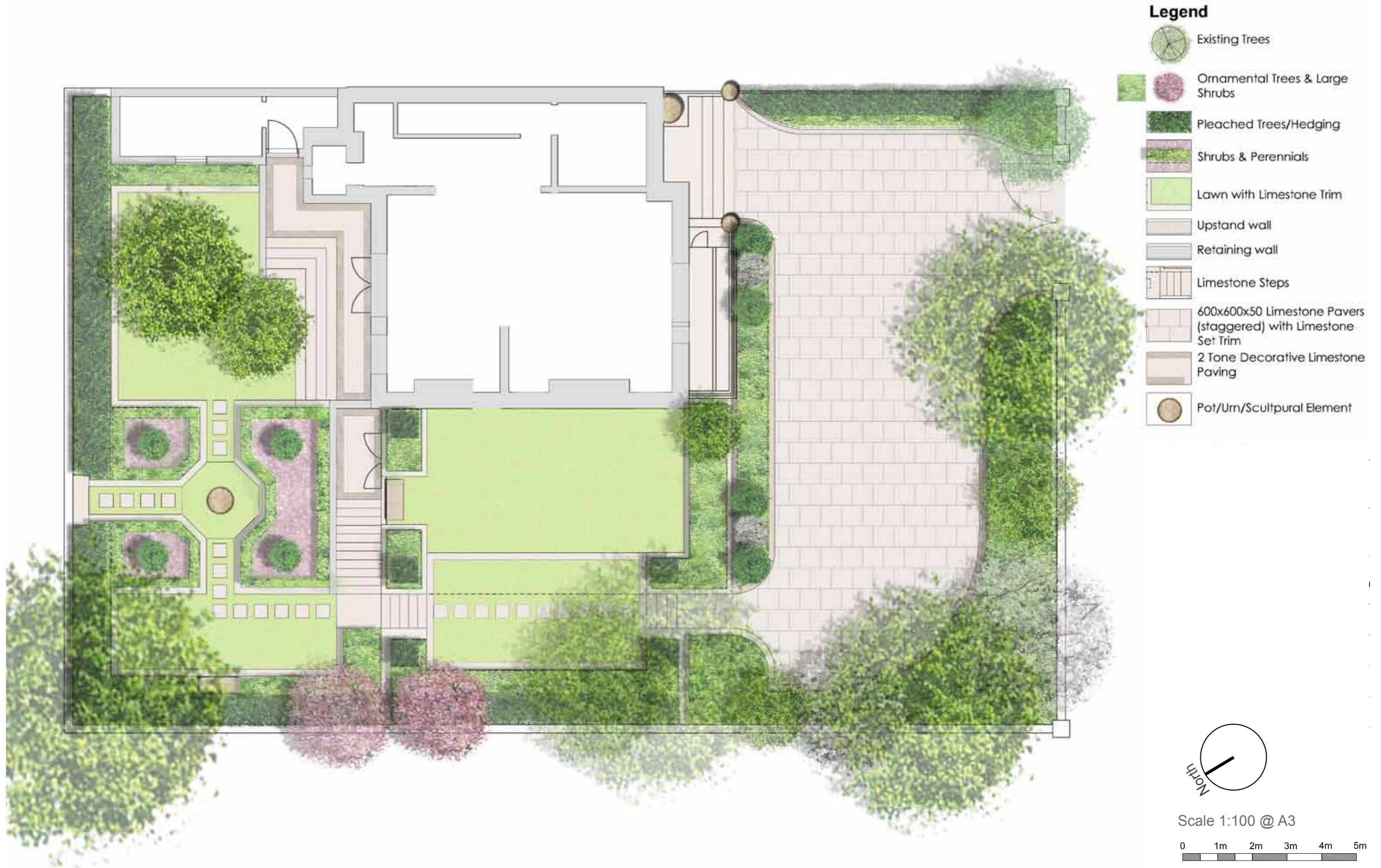




11 PRINCE ALBERT ROAD, LONDON NW1
LANDSCAPE PROPOSALS
AMENDED PLANNING SCHEME
CS075826-L002 Rev E
June 2015



Ornamental Structural Shrubs

Retaining wall

Existing Trees;
Yew & Laburnum

Lawn
-1.95 FFL

-2.70 FFL

Steps Up

Mirrored Archway in wall

Ornamental Pedestal Urn &
Parterre Garden

Pleached Carpinus Betulus

Limestone
Pavers in Lawn

Edwardian Stone Bench

Existing Lime Tree

-1.95 FFL

Carpinus Betulus Hedge

-4.00 FFL

Steps up
to garden

Steps up to
front garden

Retaining wall

Podium terrace
-0.75 from FFL

Edwardian Stone Bench

Built in planters

Line of building below

-0.75 FFL

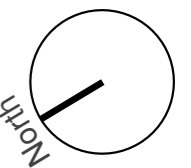
Clipped Buxus pyramids

Retaining wall

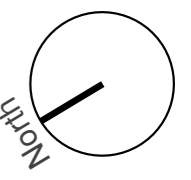
Existing trees

Box-head Carpinus betulus hedge

2no Cornus controversa 'Variegata'



Not to scale

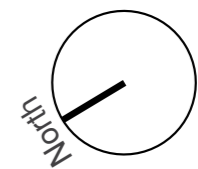
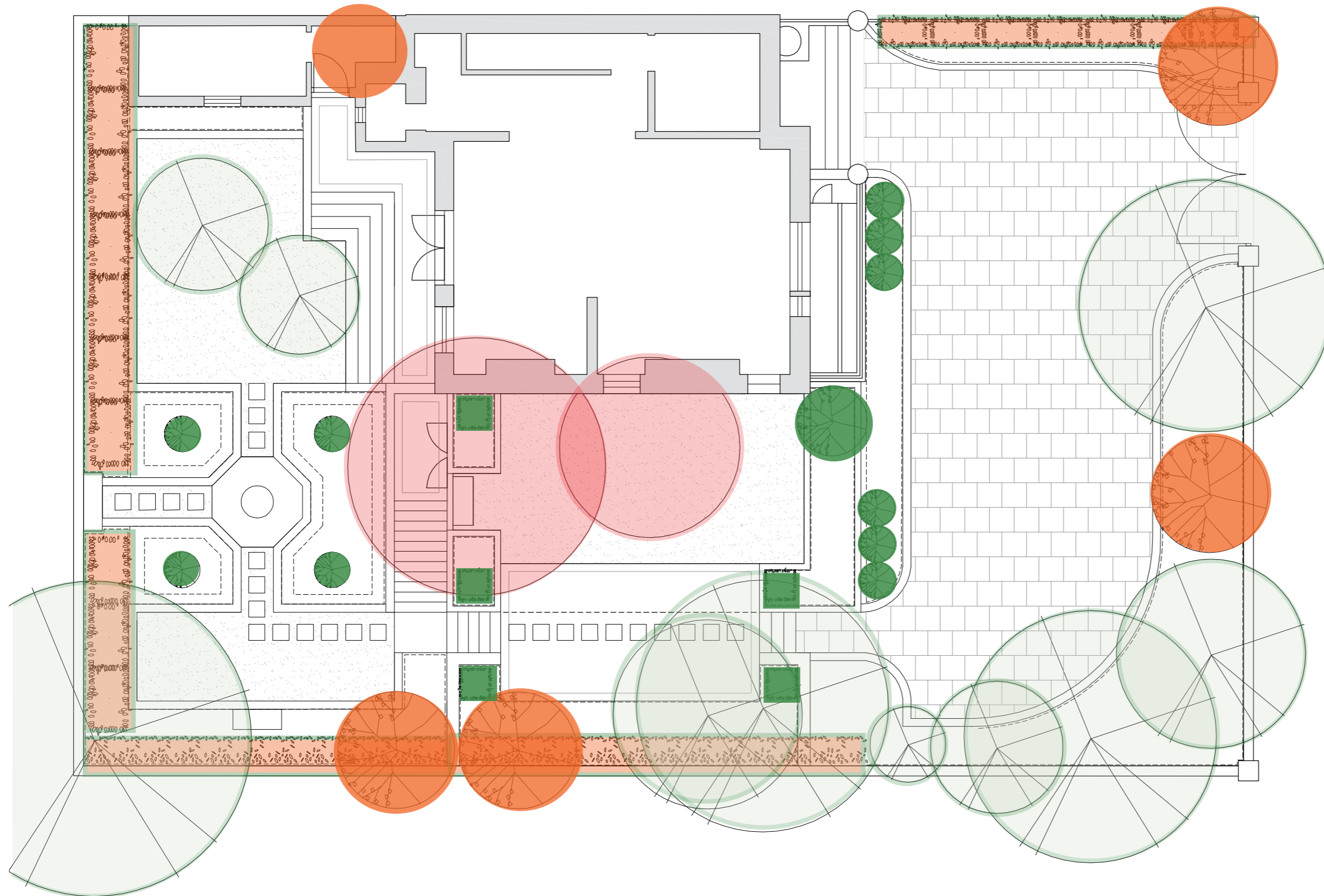


Not to scale

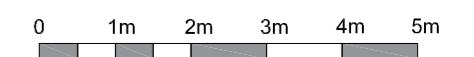
© This drawing is the copyright of Capita. All Dimensions are to be checked not scaled. Capita accept no liability for any expense loss or damage of whatsoever nature and however arising from any variation made to this drawing or in the execution of the work to which it relates which has not been referred to them and their approval obtained.
 Reproduced from (insert scale of map, for example 1:10 000 scale) by permission of Ordnance Survey on behalf of The Controller of Her Majesty's Stationery Office, © Crown Copyright (insert the year of publication of the Ordnance Survey data), All rights reserved. License number 100029505.

Legend

-  Existing trees to be retained
-  Existing trees to be removed
-  Proposed trees
-  Proposed Pleached Trees/Hedging
-  Proposed Structure Shrubs



Scale 1:100 @ A3



Paving



PRODUCT Hardscape Charemenge Honed Limestone (or similar approved) - 30mm depth, sizes vary

LOCATION Steps, Lawn Edge & Rear Garden Paving



PRODUCT Hardscape Gala Blue Grey Honed Limestone (or similar approved) - 30mm depth, sizes vary

LOCATION Detailing in Rear Garden Paving and on Step Landings



PRODUCT Hardscape Blackwell Buff Sawn Limestone (or similar approved)- 600x600x50mm Pavers & 250x150x50mm Setts

LOCATION Front Driveway and Edging

Coping



PRODUCT Hardscape Cenia Enica Flamed Limestone (or similar approved)- 200 x50mm x varying lengths

LOCATION Coping to upstand walls

Garden Elements



PRODUCT Edwardian Style Stone Pedestal Urn - Product to be determined

LOCATION Parterre Garden



PRODUCT Edwardian Style Stone Bench - Product to be determined

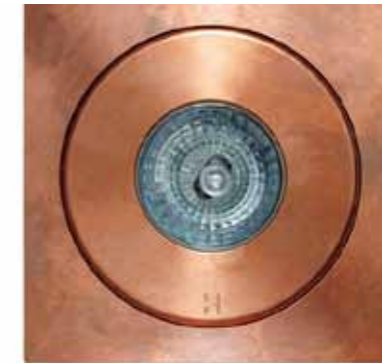
LOCATION Rear Garden

Lighting



PRODUCT Hunza Copper Wall Light - MEC or similar approved supplier

LOCATION Upstand walls and to light steps



PRODUCT Hunza Copper Flush Floor Light - MEC of similar approved supplier

LOCATION Front Driveway and way faring for rear garden paths



PRODUCT Hunza Copper Modex Spike Uplight - MEC or similar approved supplier

LOCATION To Feature Trees and Shrubs

Trees & Hedging



Prunus padus 'Albertii'



Magnolia x soulangea



Cornus controversa 'Variegata'



Carpinus betulus (pleached)



Camellia japonica 'Nobelissima'



Buxus sempervirens

Shrubs/Climbers



Buxus sempervirens (pyramid)



Rosa 'Kent'



Hydrangea paniculata 'Ville Fraise'



Azalea indica 'Knut Alba'



Rosa 'The Generous Gardener'



Clematis armandii

Perennials



Paeonia 'Duchesse de Nemours'



Astilbe 'Bridal Veil'



Heuchera villosa 'Palace Purple'



Helleborus x hybridus 'Double Ellen White'



Hosta 'White Feather'



Liriopis muscari 'Monroe White'

Groundcover/Bulbs



Athyrium niponicum var. pictum



Ajuga reptans 'Autropurpurea'



Bergenia 'Baby Doll'



Tiarella 'Spring Symphony'

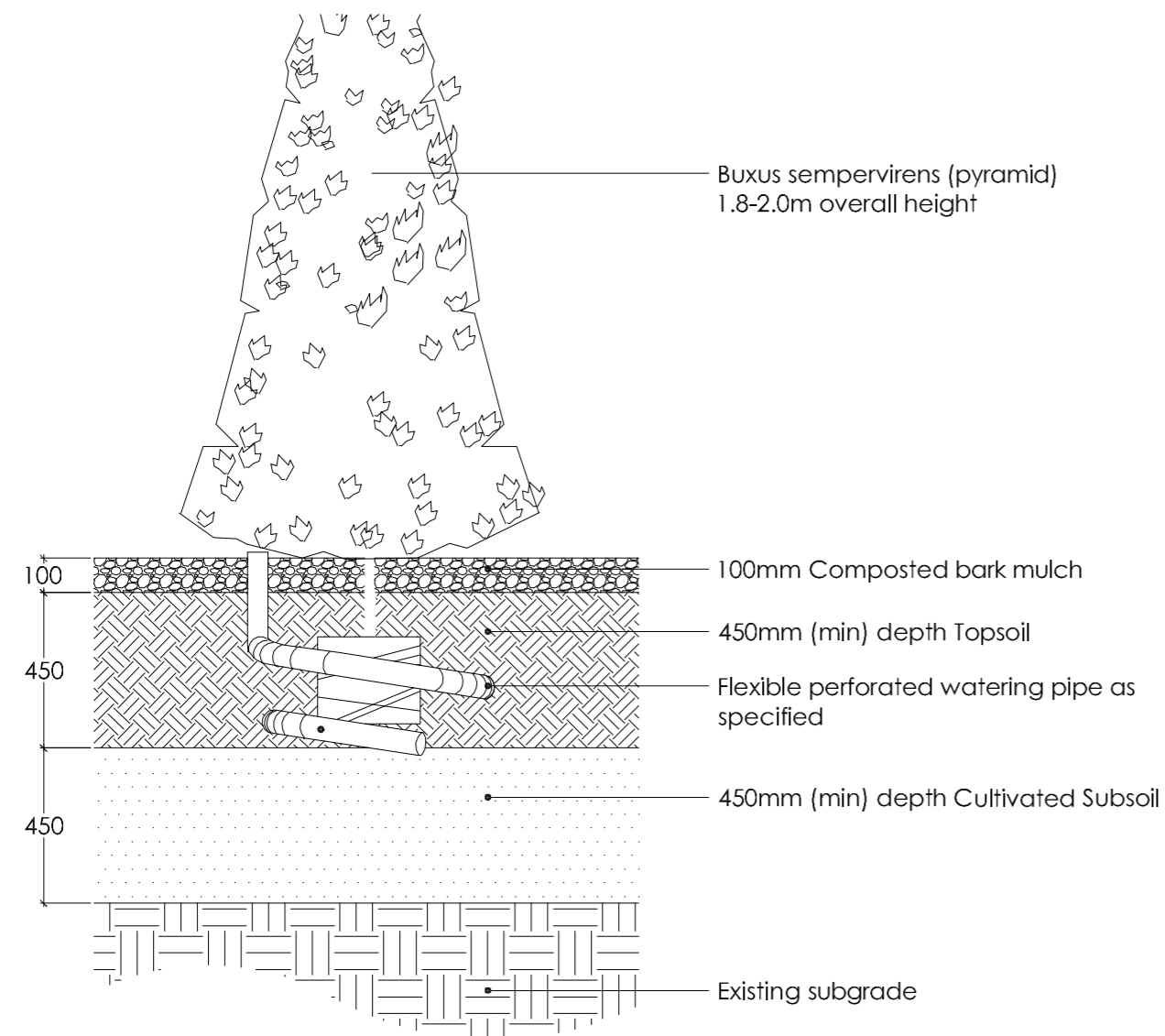


Allium 'Mt Everest'



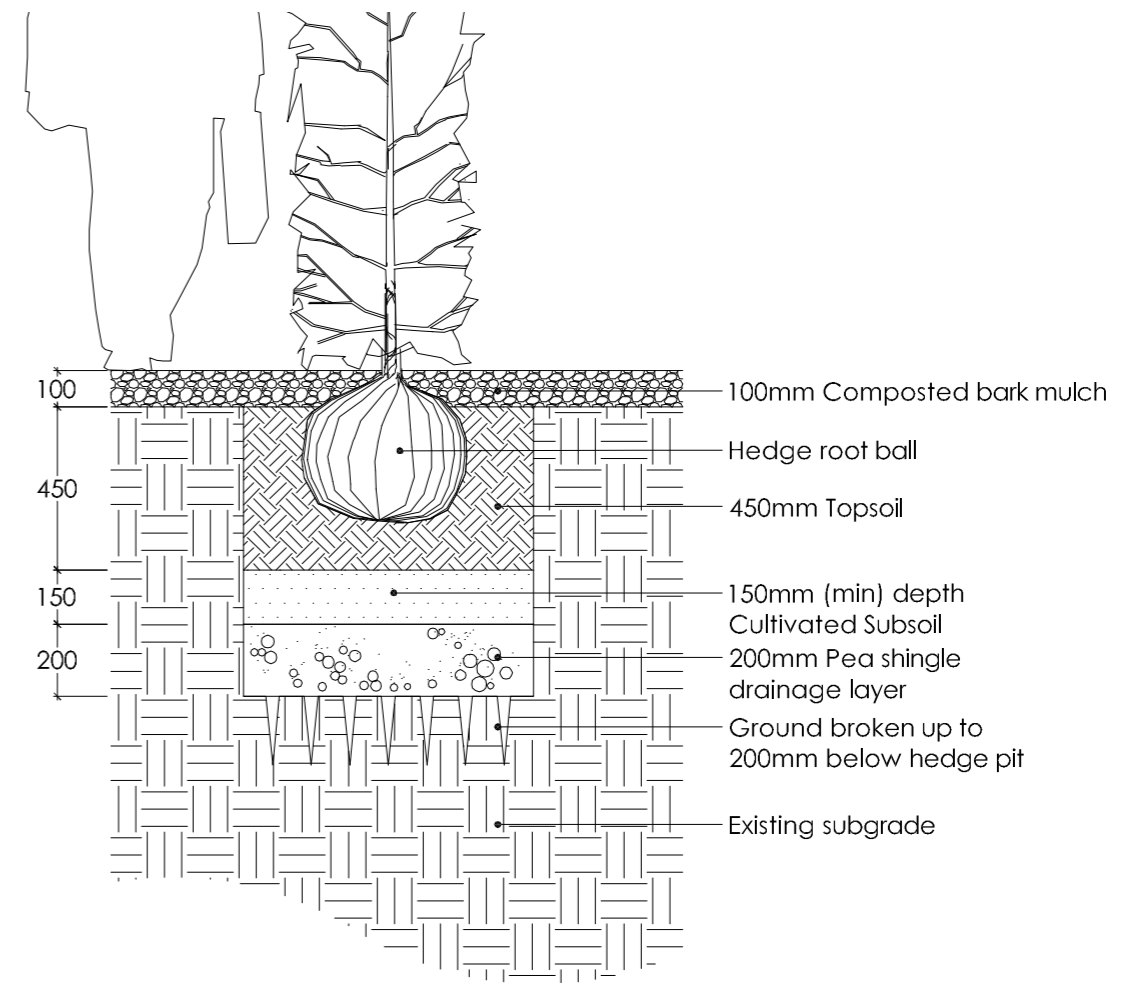
Tulipa 'Angelique'

PLANT SIZES	Pot Size (ltr)	Size (min) Height / Spread	Description
TREES (Semi-mature 20-25cm girth)	Root Ball	4.5-6.0m	1.8m clear stem min.
TREES (Semi-mature Pleached)	Root Ball	3.0-3.5m	1.8m clear stem min. Head to be circa 1-1.5m square - Sizes to be matched for all trees
HEDGING AND SPECIMENS	10ltr	Varies	Bushy
SHRUBS	3ltr	30-40cm	Bushy
HERBACEOUS & GROUNDCOVERS	3ltr	n/a	full pots
BULBS	n/a	topsize	Plant in clumps



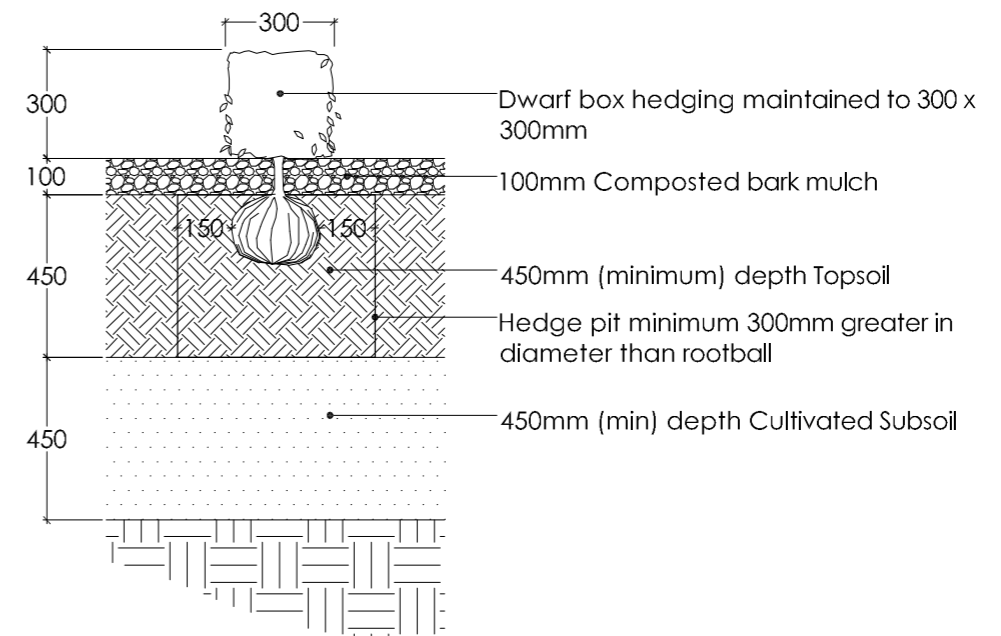
1.0 Specimen Shrub Planting Detail

Section 1:20



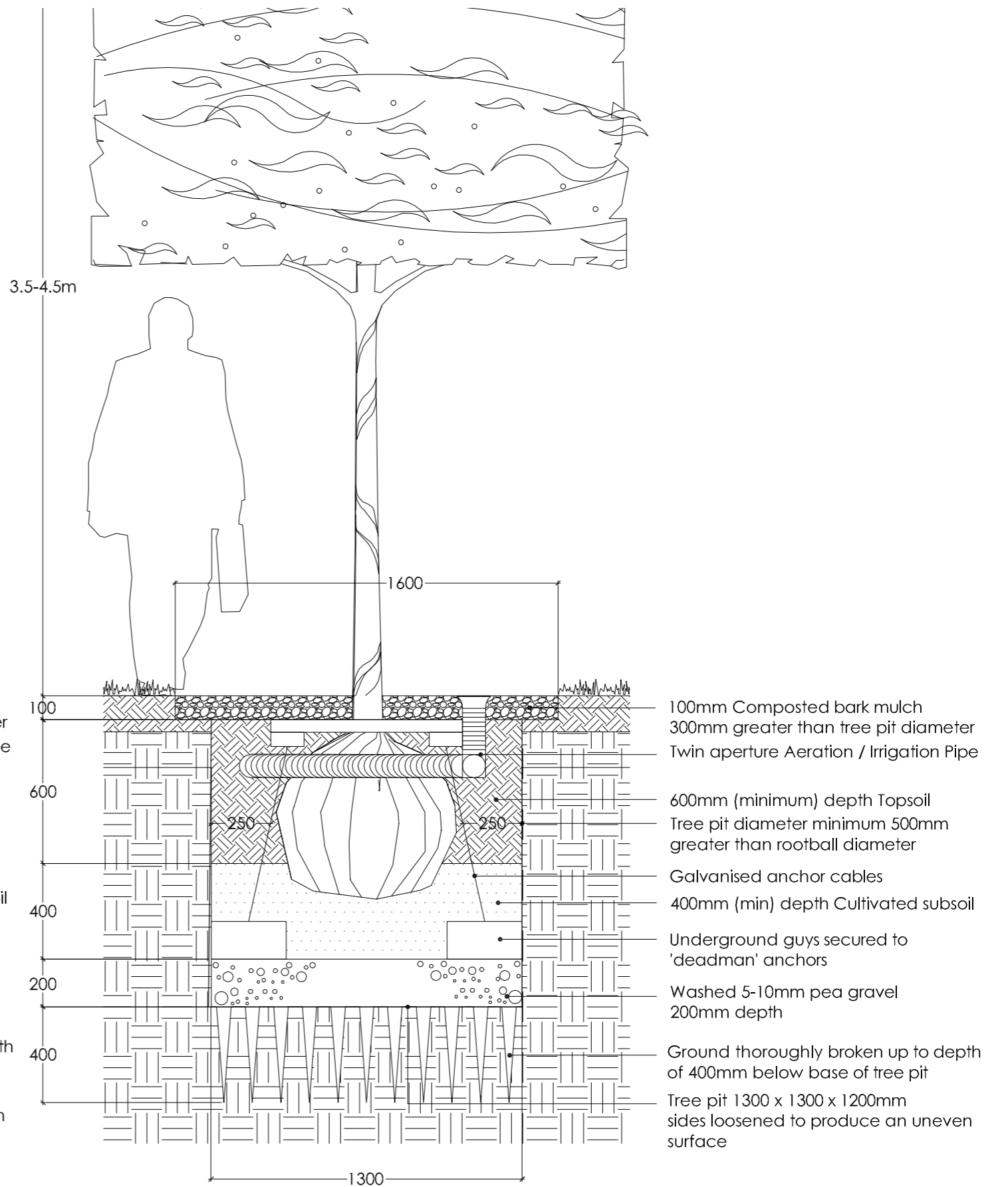
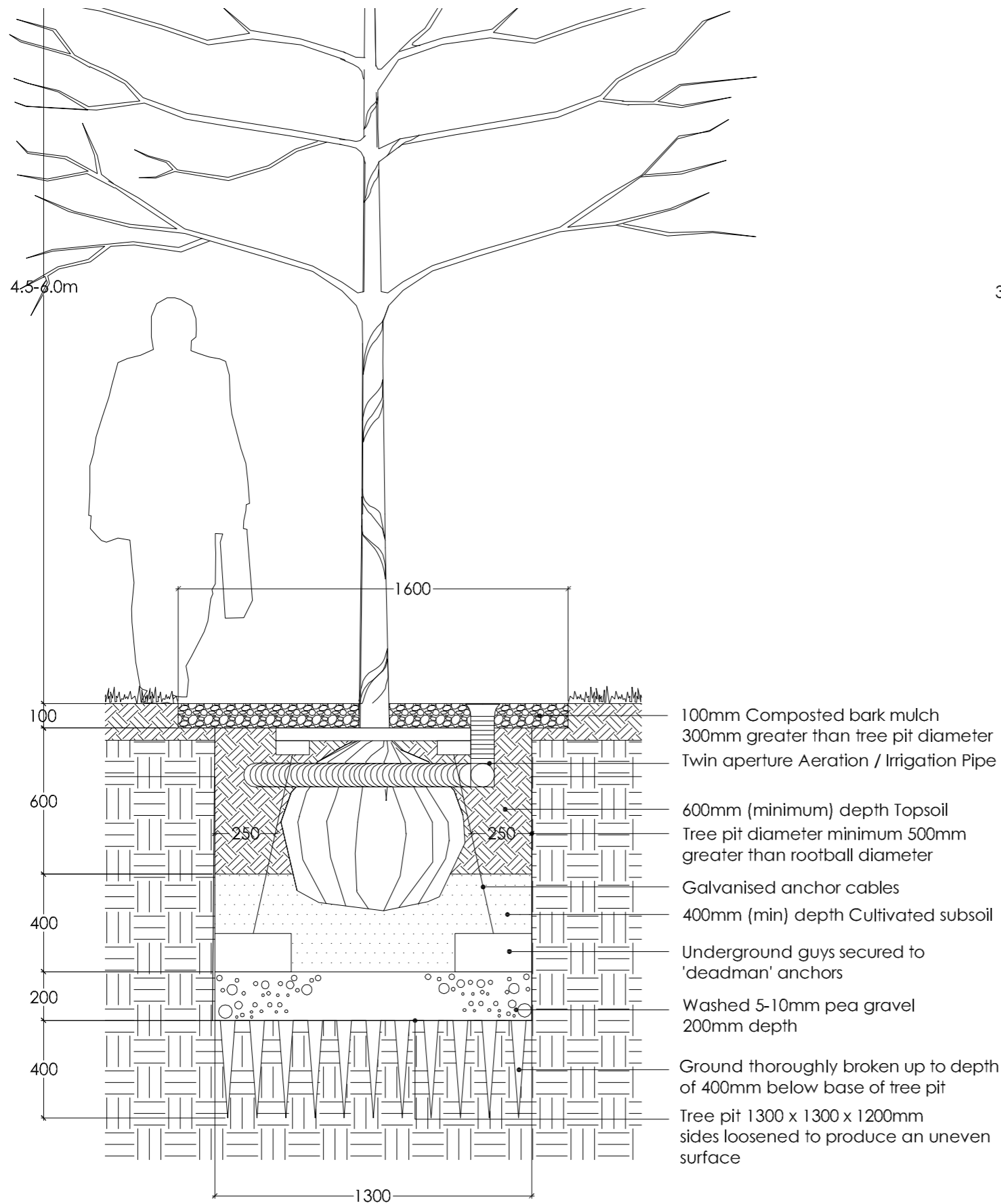
2.0 Typical Instant Hedge Planting Detail

Section 1:20



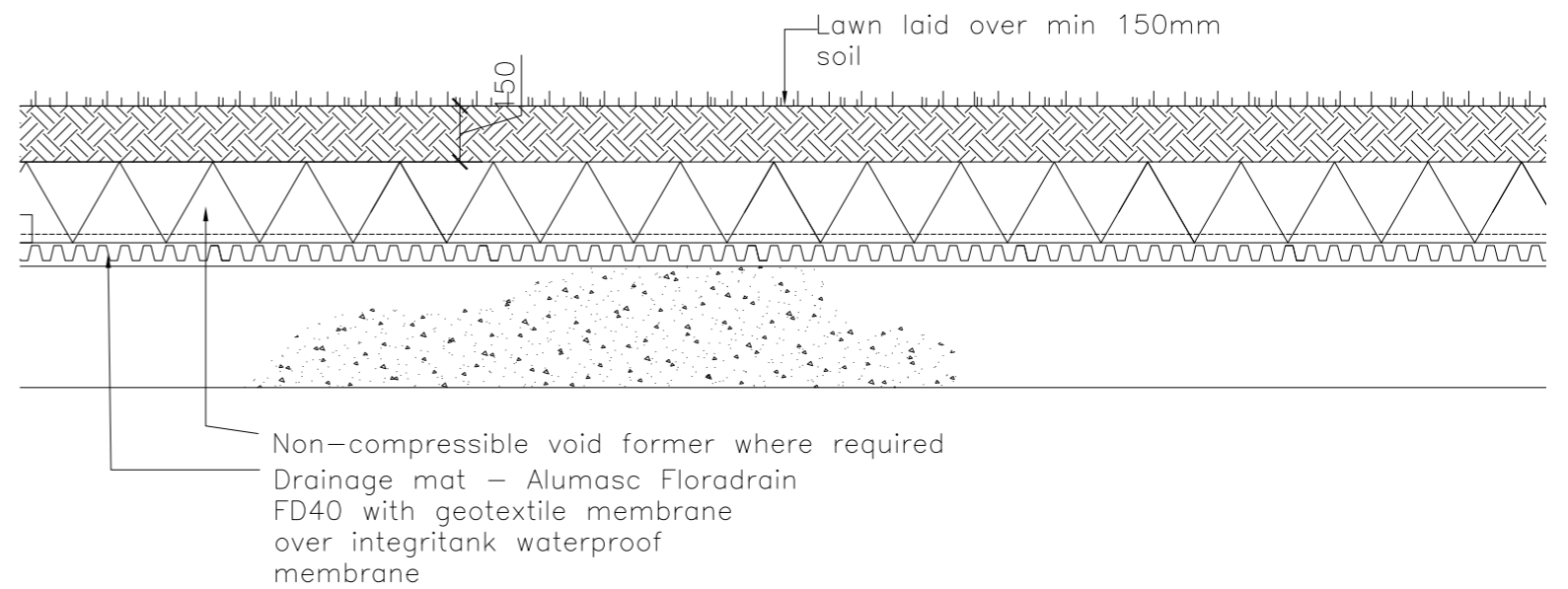
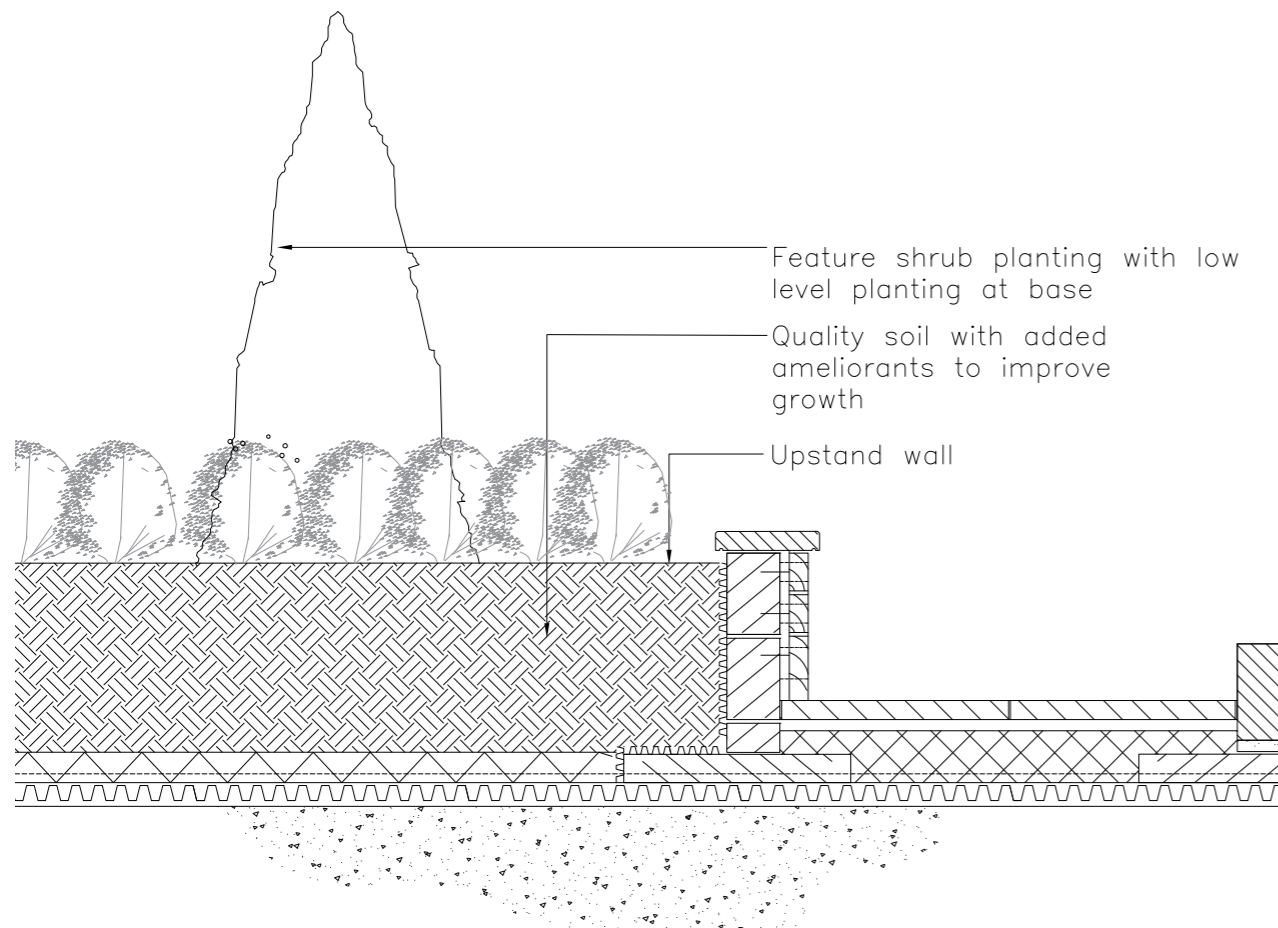
3.0 Typical Dwarf Hedge Planting

Section 1:20



4.0 Typical Semi Mature (20-25cm Girth) Tree Planting
Section 1:20

5.0 Pleached Semi-Mature (20-25cm Girth) Tree Planting
Section 1:20



TYPICAL SOFT LANDSCAPE CONSTRUCTION ABOVE SLAB - REFER TO ARCHITECTS DESIGN