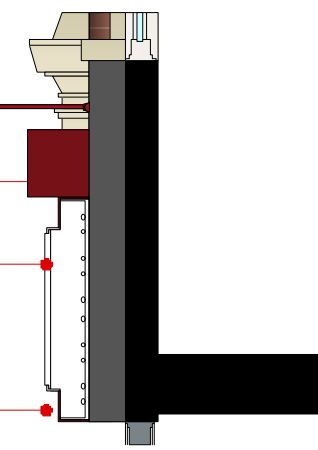


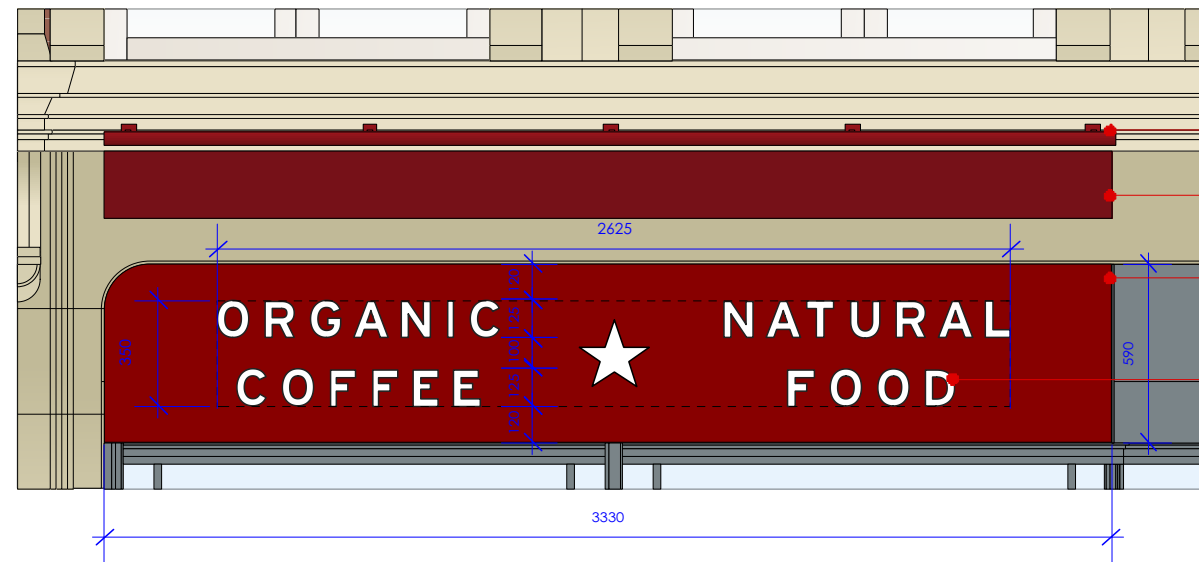


- trough lighting above to light awning & fascia
- new electric motor awning powder coated RAL 3004 satin (red)
- 540h built up mirror polished s/s letters & stars, non illuminated, opal pushed through letters to front face of built up s/s letters & stars.
- aluminium tray pan powder coated RAL 3004 satin (red).

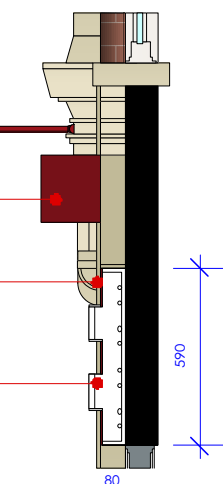


SIGN A
LEFT HAND SIDE
FASCIA SIGN

SIGN A
LEFT HAND SIDE FASCIA SIGN EXTERNALLY ILLUMINATED (OPTION 1) **quantity 01no.**
new fascia panel approx 5110w 740h 100d o/a to align with front face piers aluminium tray pan powder coated ral 3004 satin, cut back existing fascia to ensure tray pan is flush with front face of existing brick nib returns right & left side scribed to suit returns as necessary allow for 540h built up mirror polished s/s letters / star and opal pushed through letters to front face of built up s/s letters / star. letters / star. fascia externally illuminated by trough light above. existing fascia above maintained and altered to ensure strong enough to support new awning box fixing to fascia. allow for power to awning.



- trough lighting above to light awning & fascia
- new electric motor awning powder coated RAL 3004 satin (red)
- aluminium tray pan powder coated RAL 3004 satin (red).
- 125h built up mirror polished s/s letters & stars, non-illuminated, opal pushed through letters to front face of built up s/s letters & stars.



SIGN B
RIGHT HAND SIDE
FASCIA SIGN

SIGN B
RIGHT HAND SIDE FASCIA SIGN EXTERNALLY ILLUMINATED (OPTION 1) **quantity 01no.**
new fascia panel approx 3330w 590h align with front face piers aluminium tray pan powder coated ral 3004 satin, face fixed to extg. fascia depth to suit extg. reveal of window bay so that front face of new fascia pan aligns flush with flush with extg. pier and new fascia pan lth bay window allow for 125h built up mirror polished s/s letters / star and opal pushed through letters to front face of built up s/s letters / star. letters / star. fascia externally illuminated by trough light above. existing fascia above maintained and modified if necessary to ensure strong enough to support new awning box fixing to fascia. allow for power to awning, note awning box fitted to existing stonework above ensure flush surface for fixing

SIGN C
SQUARE PROJECTING SIGN - **quantity 01no.**
(OPTION 2) 600sq. blade sign 2440h u/s aluminium panel powder coated red ral 3004 with vinyl graphics applied to either face. 600mm x 600mm (700mm overall projection) with 8 x 20 ogee moulding 2440h u/s sign with 2no over head light units, portland ref: 'signlux' with adjustable fixings on bracket finished in satin RAL 7015 powder coat (grey)

SIGN D
NEW LARGE PRET STAR INTERNALLY ILLUMINATED **quantity 1no.** 1200dia o/a 1120 u/s roundel 95h individual white vinyl letters applied directly to glass & 1no. internally illuminated pret star 855w 855h 60d built up mirror polished stainless steel with internally lit opal acrylic front faces with red vinyl to face of star & polished s/s backs. lit with white GE 'tetra-mini max leds all ceiling hung behind window on polished stainless rods securely fixed to soffitt and ceiling structure. wiring concealed in rods.

SIGN E
NEW MANIFESTATION PRODUCT STRIP (stars & product texts) **quantities as shown.**
100h vinyl red strip applied to windows. white wording in interface bold with white pret stars top of vinyl strip 1000mm above internal FFL width of windows measured prior to manufacture.

REVISIONS
A: sign A & B revised, awning setting out repositioned, trough brackets 750d
B: projecting sign reduced to 600mm square to planners comments
C: check dims and tbc text removed.
D: fascia sign A & B externally trough lit above.



PROJECT
PRET A MANGER

LOCATION
117 Shaftesbury Avenue
LONDON WC2H 8AD

TITLE
detailed signage
sheet 1

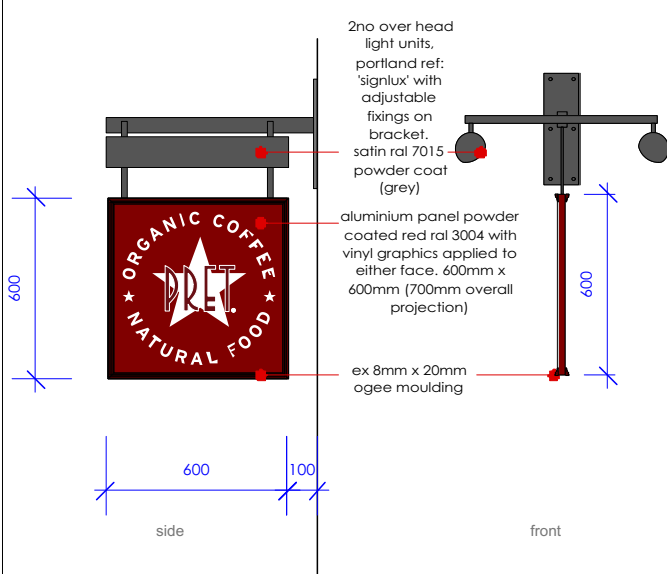
DRAWING No.
TD15-PM46-PL01.3

REVISION	DATE	SCALE @ A3
D	20.08.15	1:25

Please do not scale from this drawing. All dimensions to be confirmed on site by Contractor. Structural works to be confirmed by Structural Engineer. All elements to comply with statutory requirements.

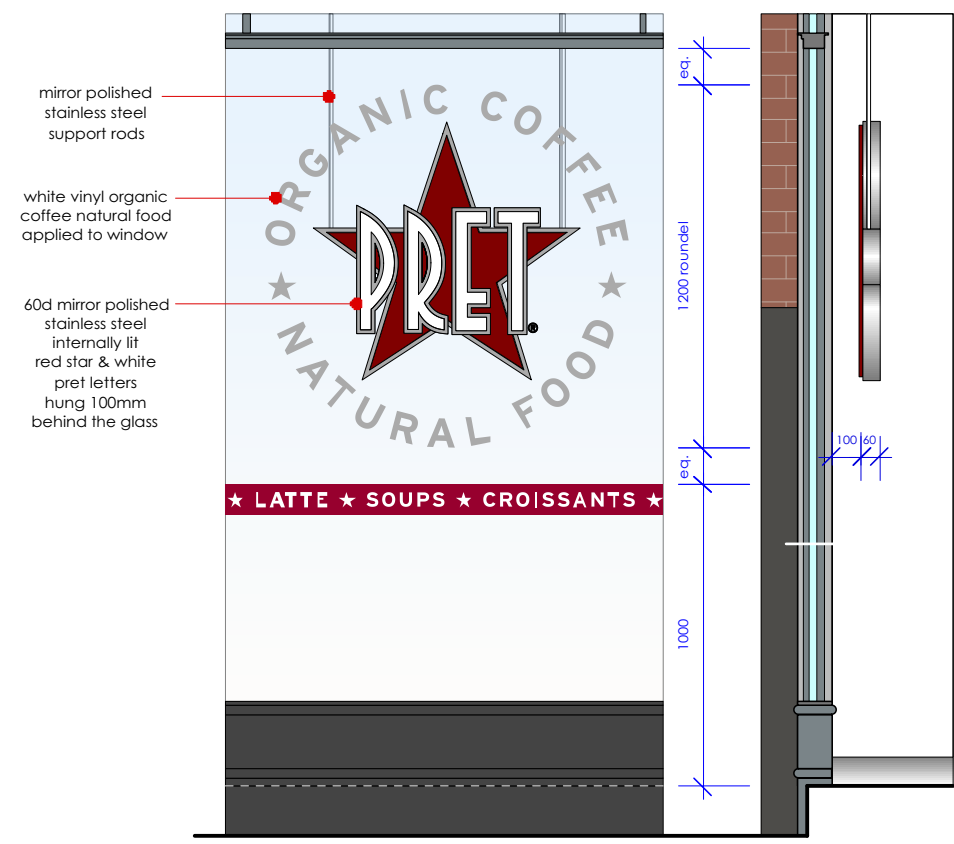
Copyright Tanner Design Limited
2b/4b Gosport Street Lynton Hampshire SO41 9BE
tel. 01590 689609 email: studio@tannerdesign.co.uk
www.tannerdesign.co.uk

Tannerdesign



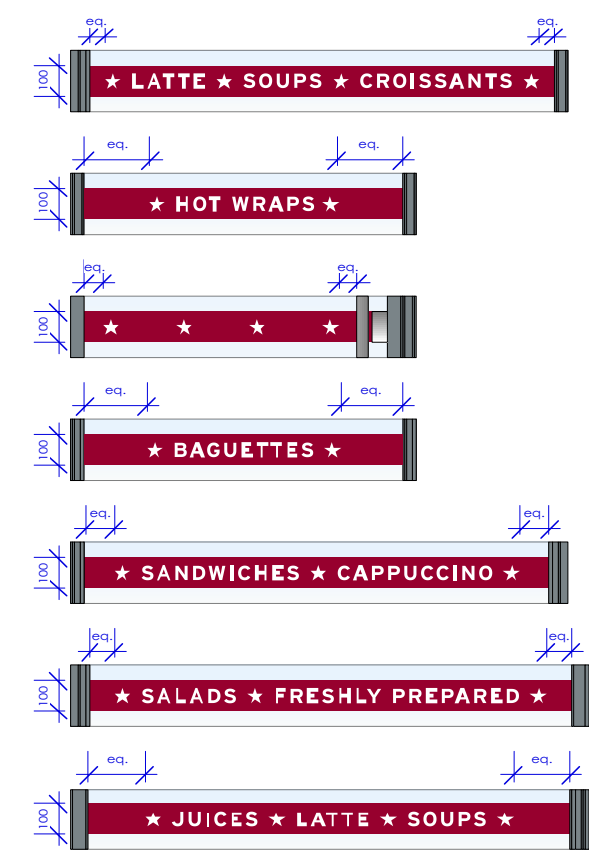
- 2no over head light units, portland ref: 'signlux' with adjustable fixings on bracket. satin ral 7015 powder coat (grey)
- aluminium panel powder coated red ral 3004 with vinyl graphics applied to either face. 600mm x 600mm (700mm overall projection)
- ex 8mm x 20mm ogee moulding

SIGN C
EXTERNALLY ILLUMINATED SQUARE
PROJECTING SIGN



- mirror polished stainless steel support rods
- white vinyl organic coffee natural food applied to window
- 60d mirror polished stainless steel internally lit red star & white pret letters hung 100mm behind the glass

SIGN D
INTERNALLY ILLUMINATED
3D STAR & VINYL APPLIED TEXT



SIGN E
MANIFESTATION STRIPS