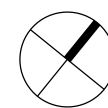


North

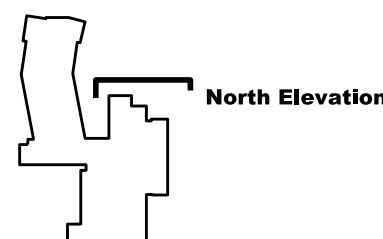
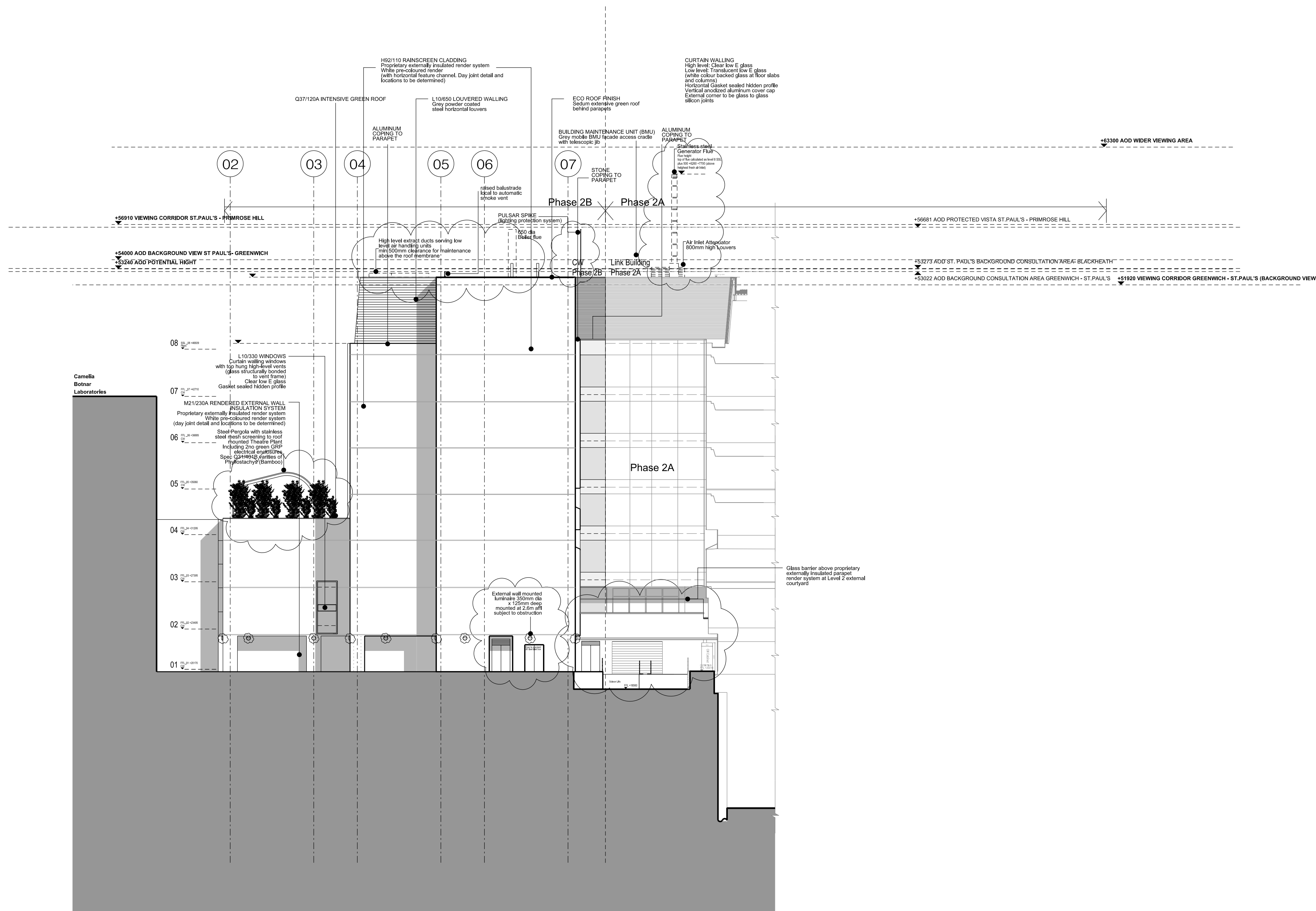


- All dimensions to be checked on site
- Do not scale off this drawing
- All dimensions are shown in mm unless otherwise stated
- Refer to drawing issue sheet for purpose of issue
- If in doubt ask
- © Llewelyn Davies Weeks Ltd.

Notes

Read in conjunction with original approved drawing number: E_2AB_N3
Original planning application : 2007/4116/P

refer to plans and sections for details of balustrades and BMU tracking arrangements



C6	Issued under DCR A-076 for approval. Issued for concurrent planning approval of details of plant etc (discharge of Condition 8) and Non Material Amendments (minor changes to elevations)	06.07.15	NR
C5	Issued under DCR A-071 for approval	16.06.15	NR
C4	Issued under DCR A-069 for approval	15.06.15	NR
C3	Changes from original planning application highlighted with clouds for RACP 0019 approval	13.05.15	NR
The following changes are listed below -horizontal feature channels added to echo Phase 2A -notes added			
C2	Louvers amended for Pre-Application review	20.11.14	JD
C1	Added Generator Flue in accordance to RFI F/45 (Subject to planning permission approval) Construction Issue	26.05.14	MN
T4	Updated for Disney imaginars	10.04.14	ZL
T3	Glass Specification Updated	23.01.14	AMA
T2	Glass NBS Refs Added	05.09.13	AMA
T1	Updated for Tender Issue	17.01.13	AA
02	Drg no updated	16.08.12	MG
01	drawing updated to GOSH comments	07.09.11	AA

No.	Description	Date	By
Revisions			

Structural Consultant Services Consultant

WSP Project Manager WSP Cost Consultant

CT Project Title

Great Ormond Street Hospital
Phase 2 B

Client

Great Ormond Street
Hospital for Children
NHS Trust

Drawing Title

NORTH ELEVATION
2015 update

Drawing Number Revision
00_2B_E_N C6

Scale @ A1
A1_1:200 - A3_1:400

Date

Architects

LLEWELYN
DAVIES

Architects | Planners | Designers
www.ldavies.com