

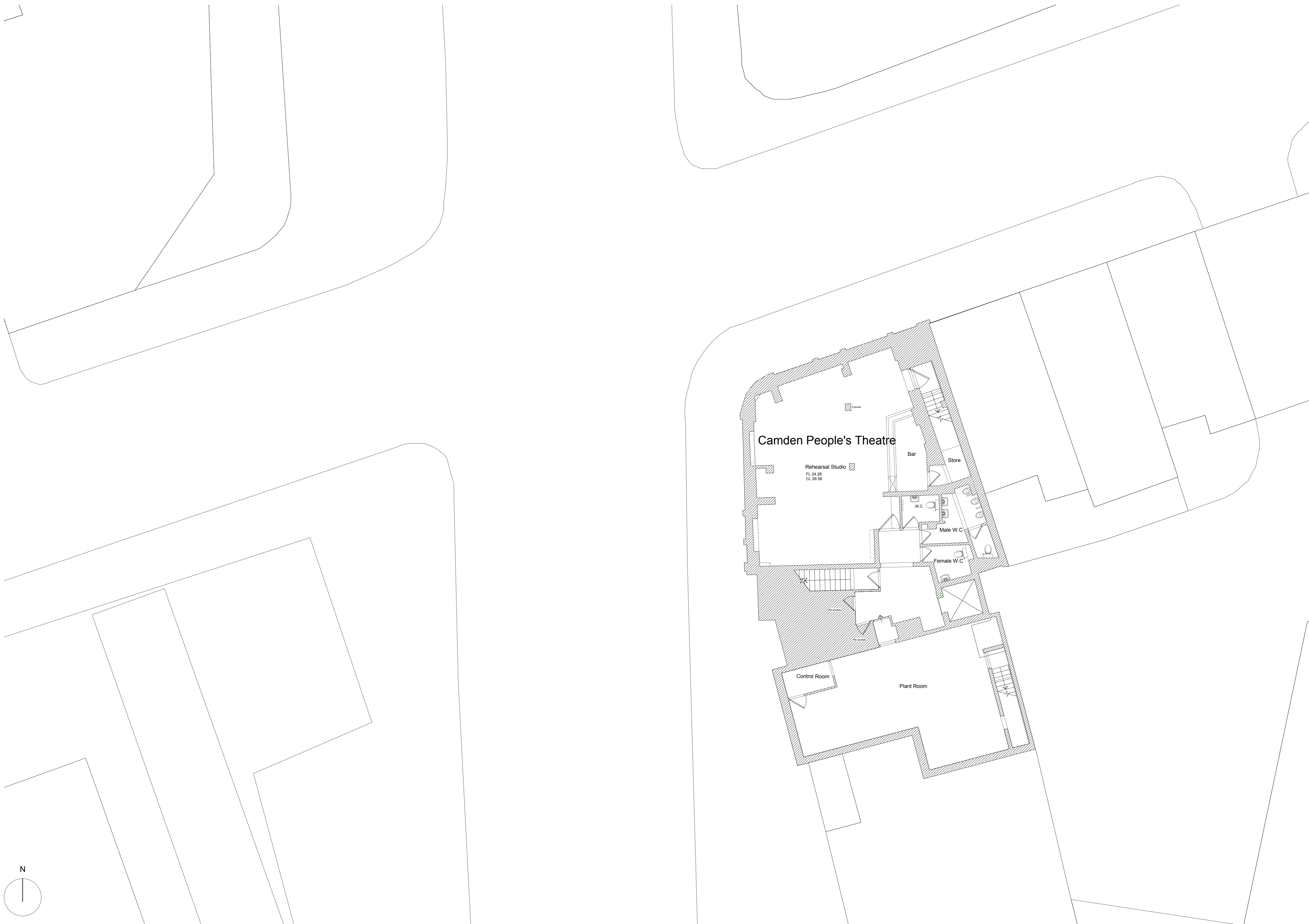
**NOTES:**  
 1. Measurements are based on metric system  
 2. All levels are in meters to Principal Datum (PD) unless noted otherwise  
 3. Do not scale drawing  
 4. Figure dimensions are to be followed  
 5. Do not use for construction unless expressly permitted  
 6. Contractor should verify all conditions on site and notify contract administrator of any variations from dimensions before construction.

The data contained in this document includes proprietary rights of mae. Any party in receipt of the document shall receive and hold the same in confidence and agrees not to duplicate or otherwise reproduce the document in whole or in part, nor disclose the contents of the same without the written consent of mae.

Rev	Date	Description

Client	
LB of Camden	
Job No	Job Name
1328	58-60 Hampstead Road
Title	
Existing Site plan	
Status	Scale
Planning	1:200 @ A1
Drawing No.	Date
1328-P7-002	17.07.15
Drawn By	Checked By
	Revision
	-

**mae**  
 mae LLP Architects  
 1 Naoroji Street  
 London WC1X 0GB  
 t: +44 (0)20 7704 6060  
 f: +44 (0)20 7833 2473  
 e: office@mae-llp.co.uk



NOTES:  
 1. Measurements are based on metric system  
 2. All levels are in meters to Principal Datum (PD) unless noted otherwise  
 3. Do not scale drawing  
 4. Figure dimensions are to be followed  
 5. Do not use for construction unless expressly permitted  
 6. Contractor should verify all conditions on site and notify contract administrator of any variations from dimensions before construction

The data contained in this document includes proprietary rights of mae. Any party in receipt of the document shall receive and hold the same in confidence and agrees not to duplicate or otherwise reproduce the document in whole or in part, nor disclose the contents of the same without the written consent of mae.

Rev	Date	Description

Client	
LB of Camden	
Job No.	Job Name
1328	58-60 Hampstead Road
Title	
Existing Basement Floor plan	
Status	Scale
Planning	1:100 @ A1
Drawing No.	Date
1328-P7-010	17.07.15
Drawn By	Checked By
	Revision
	-

**mæ**  
 mæ LLP Architects  
 1 Naoroji Street  
 London WC1X 0GB  
 t: +44 (0)20 7704 6060  
 f: +44 (0)20 7833 2473  
 e: office@mæ-llp.co.uk







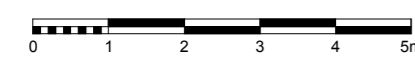




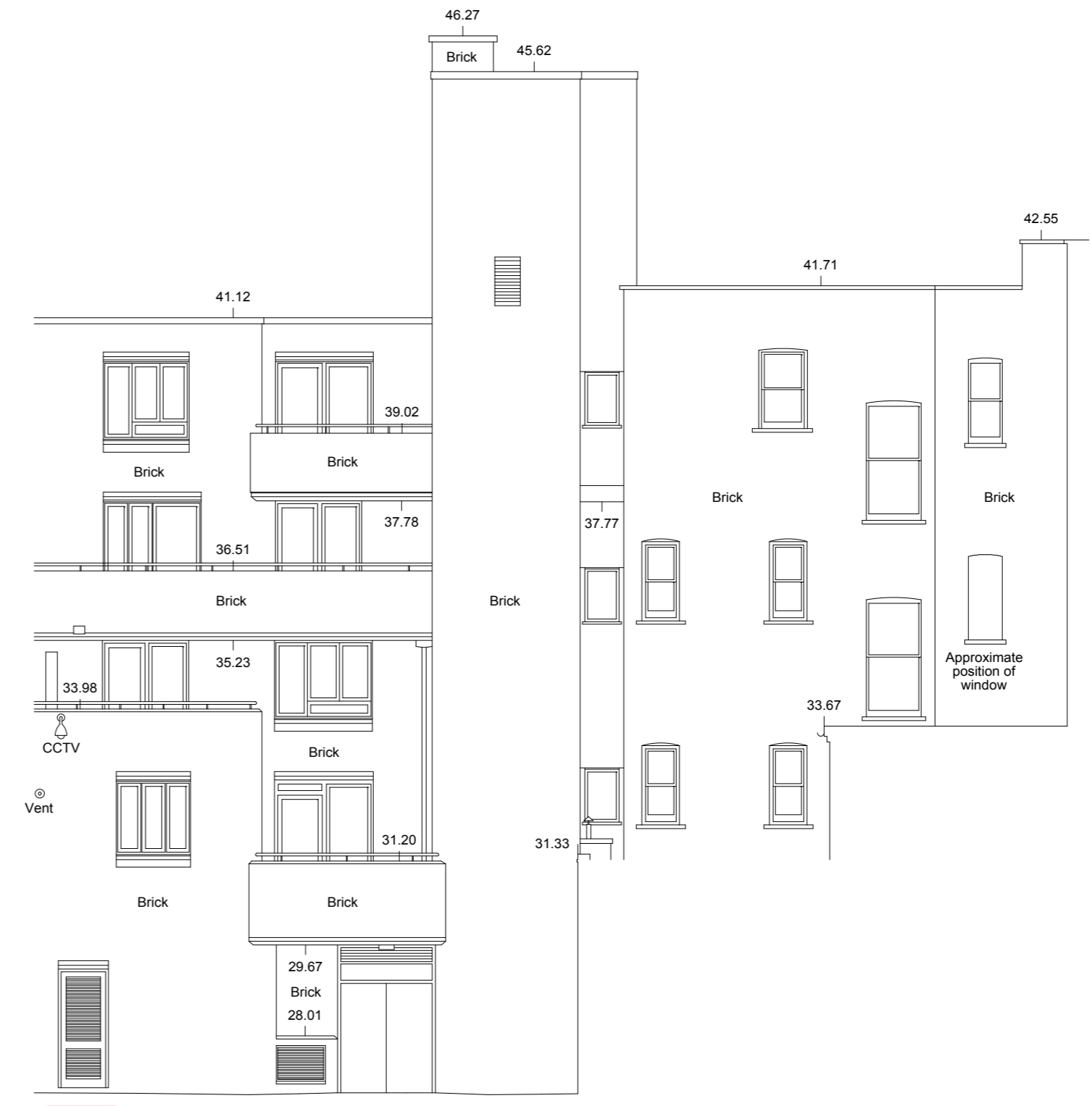
NOTES:  
 1. Measurements are based on metric system  
 2. All levels are in meters to Principal Datum (PD) unless noted otherwise  
 3. Do not scale drawing  
 4. Figure dimensions are to be followed  
 5. Do not use for construction unless expressly permitted  
 6. Contractor should verify all conditions on site and notify contract administrator of any variations from dimensions before construction  
 The data contained in this document includes proprietary rights of mae. Any party in receipt of the document shall receive and hold the same in confidence and agrees not to duplicate or otherwise reproduce the document in whole or in part, nor disclose the contents of the same without the written consent of mae.



1 North Elevation (Drummond Street)  
 Scale: 1:100



2 West Elevation (Hampstead Road)  
 Scale: 1:100



East Elevation (Foundry Mews)  
 Scale: 1:100

# Revised

19/08/2015 07:28:03

Rev	Date	Description

Client LB of Camden	
Job No 1328	Job Name 58-60 Hampstead Road
Title Existing Elevations	
Status Planning	Scale 1:100 @ A1
Drawing No. 1328-P7-031	Date 17.07.15
Drawn By	Checked By
	Revision
	-

**mae**  
 mae LLP Architects  
 1 Naoroji Street  
 London WC1X 0GB  
 t: +44 (0)20 7704 6060  
 f: +44 (0)20 7833 2473  
 e: office@mae-llp.co.uk