

© COPYRIGHT Mace Group
 NOT TO BE REPRODUCED WITHOUT WRITTEN PERMISSION.
 BECAUSE OF POSSIBLE SCALING ERRORS IN ELECTRONIC AND HARD COPY REPRODUCTION DO NOT SCALE FOR CONSTRUCTION PURPOSES.
 ALL DIMENSIONS TO BE CHECKED & VERIFIED ON SITE PRIOR TO CONSTRUCTION.

Safety first. Second nature.

Safety, Health and Environment Information

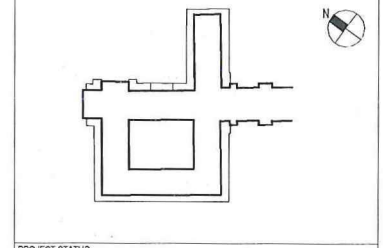
The significant unusual hazards / risks associated with this type of work are noted as:

CONSTRUCTION	
CI	NONE
CO	NONE
OPERATION AND MAINTENANCE	
CI	NONE
CO	NONE
DISMANTLING/DEMOLITION	
CI	NONE
CO	NONE

NOTE - TO BE READ IN CONJUNCTION WITH RISK REGISTER

NOTE
 C4: SKIRTING TO ROOM LG.07 WAS SKN-1 NOW SKN-2
 FOR SETTING OUT DRAWINGS REFER TO
 28731-SOAS-A-PLN-GEN-B1-241 & 246

REV	DATE	DESCRIPTION	DRAWN	CHECKED
1	03/10/14	CONSTRUCTION ISSUE PARTITIONS UPDATED SKIRTINGS AND DETAIL REFS SHOWN	DWA1	CHKRAPP
2	14/11/14	LEVELS UPDATED / LOUVERS & GRILLES REFERENCES ADDED WALL TYPE LEGEND SHORTENED & FIRE RATINGS ADDED, SOME WALL AND SKIRTING TYPES CHANGED PARTITIONS ACUSTIC & FIRE REQUIREMENTS NOTE ADDED. FIRE & ACUSTIC BARRIER NOTE ADDED.	GM	LTMD
3	19/12/14	DOOR CHANGES SINCE CONTRACT ISSUE T2 AND NOTES ADDED AS HIGHLIGHTED REGARDING EXISTING SKIRTING ETC. RE: LG.06M SKIRTING IN ABYSSANCE NOTES ADDED. LIFT SHAFT UPDATED	JU	EFMD
4	30/03/15	SKIRTING ABYSSANCE NOTE OMITTED REVIEW AS REQUESTED AT CHANGE CONTROL. MEETINGS UNDERTAKEN WALL TYPE '1' ADDED, DRAWINGS UPDATED AS HIGHLIGHTED	AB	EFMD
5	19/05/15	ACUSTIC RATING MOVED FROM WALL TAGS TO LEGEND WALL ADDED TO LG.33 RISER AMENDED SETTING OUT TO GLAZED PARTITIONS	DL	EFMD



PROJECT STATUS: CONSTRUCTION

CLIENT: GRAHAM CONSTRUCTION

mace
 155 Moorgate, London, EC2M 6XB
 www.macegroup.com

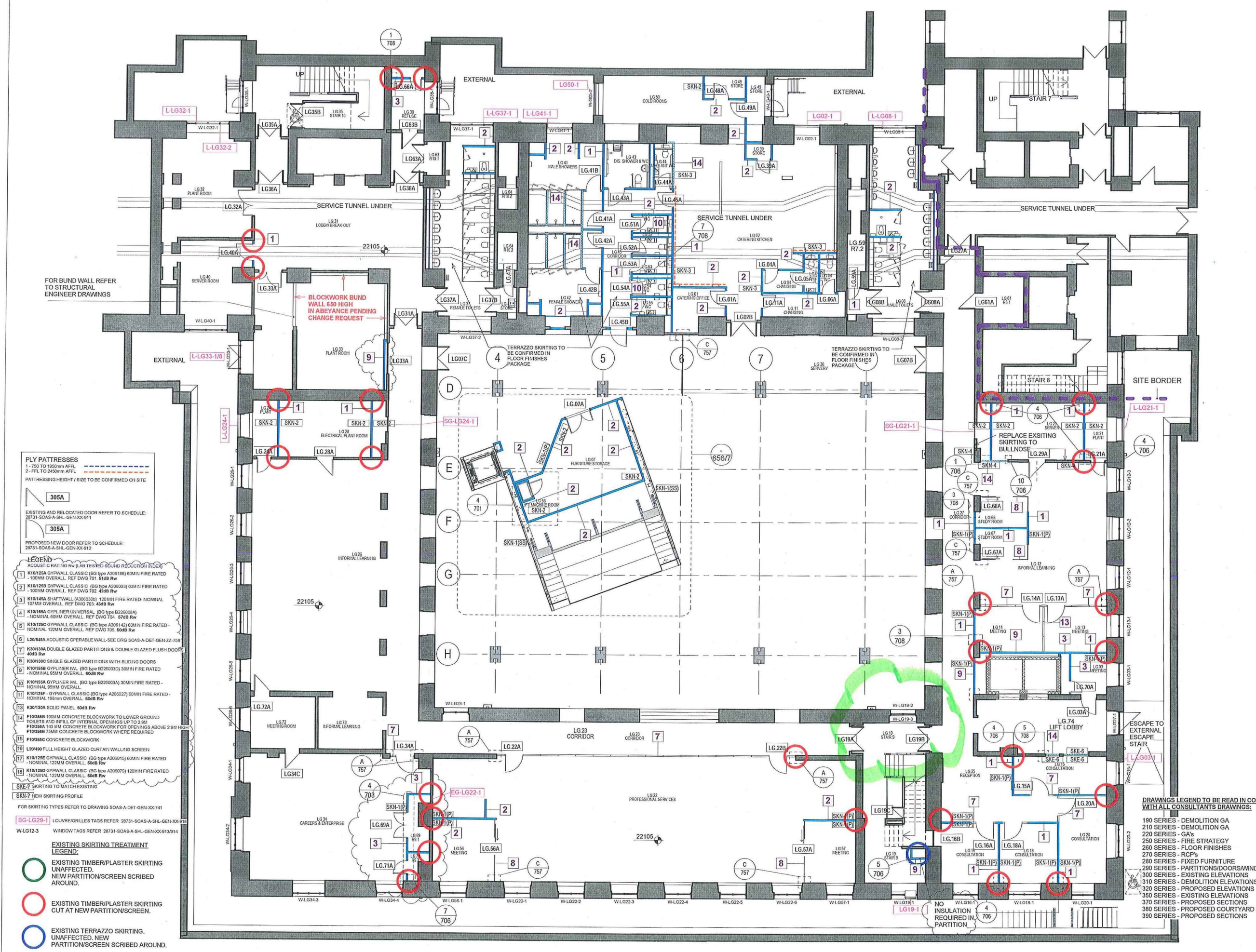
PROJECT TITLE: SOAS INTO SENATE HOUSE
 MALET STREET
 LONDON, WC1E 7HU

DRAWING TITLE: LOWER GROUND
 DOOR/WINDOW/PARTITION
 KEY PLAN

PROJECT NO.	DRAWN BY	DATE	VIEW TYPE	LEVEL	DWG. NO.
28731	DC	25/07/13	DC	B1	291

SHEET NO. 1 of 1
 SCALE: As indicated
 ORIG. SHEET SIZE: A1
 REV: C 5

INFORMATION HANDLING CLASSIFICATION: UNRESTRICTED



PLY PATTERNESSES
 1 - 750 TO 1950mm AFFL
 2 - FFL TO 2400mm AFFL
 PATTERNING HEIGHT / SIZE TO BE CONFIRMED ON SITE

305A
 EXISTING AND RELOCATED DOOR REFER TO SCHEDULE:
 28731-SOAS-A-SHL-GEN-XX-911

305A
 PROPOSED NEW DOOR REFER TO SCHEDULE:
 28731-SOAS-A-SHL-GEN-XX-912

- LEGEND**
- 1 K10125A GYPWALL CLASSIC (BG type A205166) 60MIN FIRE RATED - 100MM OVERALL. REF DWG 701. 51dB Rw
 - 2 K10125B GYPWALL CLASSIC (BG type A200003) 60MIN FIRE RATED - 100MM OVERALL. REF DWG 702. 45dB Rw
 - 3 K10145A SHAFTHALL (A300035) 120MIN FIRE RATED - NOMINAL 107MM OVERALL. REF DWG 703. 43dB Rw
 - 4 K10155A GYPLINER UNIVERSAL (BG type B220008A) - NOMINAL 60MM OVERALL. REF DWG 704. 67dB Rw
 - 5 K10125C GYPWALL CLASSIC (BG type A206142) 60MIN FIRE RATED - NOMINAL 120MM OVERALL. REF DWG 705. 60dB Rw
 - 6 L20145A ACUSTIC OPERABLE WALL - SEE DRG SOAS-A-DET-GEN-22-756
 - 7 K30132A DOUBLE GLAZED PARTITIONS & DOUBLE GLAZED FLUSH DOORS 60dB Rw
 - 8 K30130C SINGLE GLAZED PARTITIONS WITH SLIDING DOORS
 - 9 K10155B GYPLINER IWL (BG type B220003C) 30MIN FIRE RATED - NOMINAL 65MM OVERALL. 60dB Rw
 - 10 K10155A GYPLINER IWL (BG type B220003A) 30MIN FIRE RATED - NOMINAL 65MM OVERALL
 - 11 K10125F - GYPWALL CLASSIC (BG type A206022) 60MIN FIRE RATED - NOMINAL 195mm OVERALL. 60dB Rw
 - 12 K30130A SOLID PANEL 60dB Rw
 - 13 F10155B 100MM CONCRETE BLOCKWORK TO LOWER GROUND TOILETS AND FULL OF INTERNAL OPENINGS UP TO 2.9M
 - 14 F10155A 140 MM CONCRETE BLOCKWORK FOR OPENINGS ABOVE 2.9M HIGH
 - 15 F10155B 75MM CONCRETE BLOCKWORK WHERE REQUIRED
 - 16 F10155C CONCRETE BLOCKWORK
 - 17 L201490 FULL HEIGHT GLAZED CURTAIN WALLING SCREEN
 - 18 K10125E GYPWALL CLASSIC (BG type A200015) 60MIN FIRE RATED - NOMINAL 120MM OVERALL. 50dB Rw
 - 19 K10125D GYPWALL CLASSIC (BG type A200079) 120MIN FIRE RATED - NOMINAL 120MM OVERALL. 60dB Rw

- SKN-7 NEW SKIRTING PROFILE
 FOR SKIRTING TYPES REFER TO DRAWING SOAS-A-DET-GEN-XX-741
- SG-LG29-1 LOUVERGRILLES TAGS REFER 28731-SOAS-A-SHL-GEN-XX-911
- WLG12-3 WINDOW TAGS REFER 28731-SOAS-A-SHL-GEN-XX-911/914
- EXISTING SKIRTING TREATMENT LEGEND:**
- EXISTING TIMBER/PLASTER SKIRTING UNAFFECTED, NEW PARTITION/SCREEN SCRIBED AROUND.
 - EXISTING TIMBER/PLASTER SKIRTING CUT AT NEW PARTITION/SCREEN.
 - EXISTING TERRAZZO SKIRTING, UNAFFECTED, NEW PARTITION/SCREEN SCRIBED AROUND.
 - EXISTING SKIRTING & DADO UNAFFECTED, NEW PARTITION/SCREEN SCRIBED AROUND.

CHANGES BETWEEN T2 AND C3:
 1 - NEW DOOR 120MIN FR ADD TO LOCATION: LG.59A, LG.71A. 2 - CHANGE FROM NEW DOOR TO EXISTING DOOR IN LOCATION: LG.02B, LG.08B, LG.28A, LG.29A.
 3 - NEW DOOR 120MIN FR CHANGE LOCATION AND SIZE, IN LOCATION: LG.70A. 4 - DOOR CHANGED FROM DOUBLE TO SINGLE LEAF IN LOCATION: LG.21A, LG.24A.
 5 - 120MIN FR DOOR CHANGE FROM SINGLE LEAF TO DOUBLE IN LOCATION: LG.69A.

REFER TO 'SOAS-A-DET-GEN-XX-755' (PROPOSED DRY LINING DETAILS) FOR DETAILS OF FIRE AND ACUSTIC BARRIERS BELOW SUSPENDED FLOORS AND BELOW HOLLOW POT SOFFITS.

THE ACUSTIC AND FIRE RATING REQUIREMENT OF THE PARTITIONS MAY BE LESS THAN WHAT IS STATED IN THE SPECIFICATION, DEPENDING ON SPECIFIC LOCATION

© COPYRIGHT Mace Group
 NOT TO BE REPRODUCED WITHOUT WRITTEN PERMISSION.
 REPRODUCTION OF THIS DRAWING FOR CONSTRUCTION PURPOSES.
 ALL DIMENSIONS TO BE CHECKED & VERIFIED ON SITE PRIOR TO CONSTRUCTION.

Safety first. Second nature.

Safety, Health and Environment Information

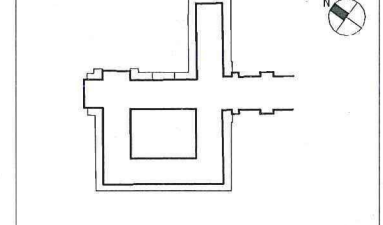
The significant unusual hazards / risks associated with this type of work are noted as:

CONSTRUCTION	
CI	NONE
CU	NONE
OPERATION AND MAINTENANCE	
OI	NONE
OII	NONE
DISMANTLING/DEMOLITION	
DI	NONE
DII	NONE

NOTE - TO BE READ IN CONJUNCTION WITH RISK REGISTER

NOTE
 CS: SKIRTING TO DDA WC G.17 WAS SKN-1 NOW SKN-2
 FOR SETTING OUT DRAWINGS REFER TO
 28731-SOAS-A-PLN-GEN-00-242

REV	DATE	DESCRIPTION	DWN	CHK/APP
1	03/10/14	CONSTRUCTION ISSUE PARTITIONS UPDATED SKIRTINGS AND DETAIL REFS SHOWN	DL	LT/MGM
2	14/11/14	LEVELS UPDATED/ LOUVRES & GRILLES REFERENCES ADDED WALL TYPE LEGEND SHORTENED & FIRE RATINGS ADDED. SOME WALL AND SKIRTING TYPES CHANGED PARTITIONS ACUSTIC & FIRE REQUIREMENTS NOTE ADDED. FIRE & ACUSTIC BARRIER NOTE ADDED.	GM	LT/MGM
3	19/12/14	DOOR CHANGES SINCE CONTRACT ISSUE 12 AND NOTES ADDED AS HIGH-LIGHTED REGARDING EXISTING SKIRTING ETC. RE: LBC SUBMISSION IN ABEYANCE NOTES ADDED. LIFT SHAFT UPDATED G30 ENTRANCE ARRANGEMENT UPDATE	JU	EF/MGD
4	13/03/15	NOTES ADDED & MOVABLE PARTITION WALL IN G33 REMOVED. ROOMS G33 G25 AND G27 BECOME ONE ROOM. REFER TO GRAHAM'S EMAIL ON 21/01/15	DL	EF/MGD
5	30/03/15	SKIRTING ABEYANCE NOTE OMITTED. REVIEW AS REQUESTED AT CHANGE CONTROL. MEETING UNDER TAKEN WALL TYPE 11 ADDED. DRAWINGS UPDATED AS HIGHLIGHTED	AB	EF/MGD
6	19/05/15	ACUSTIC RATING MOVED FROM WALL TAGS TO LEGEND. SECONDARY GLAZING ADDED (WINDOWS W-G21-E & W-G21-7). DOOR SWINGS AMENDED TO W-G21-1 & W-G21-1	HB	EF/MGD



PROJECT STATUS: **CONSTRUCTION**

CLIENT: **GRAHAM CONSTRUCTION**

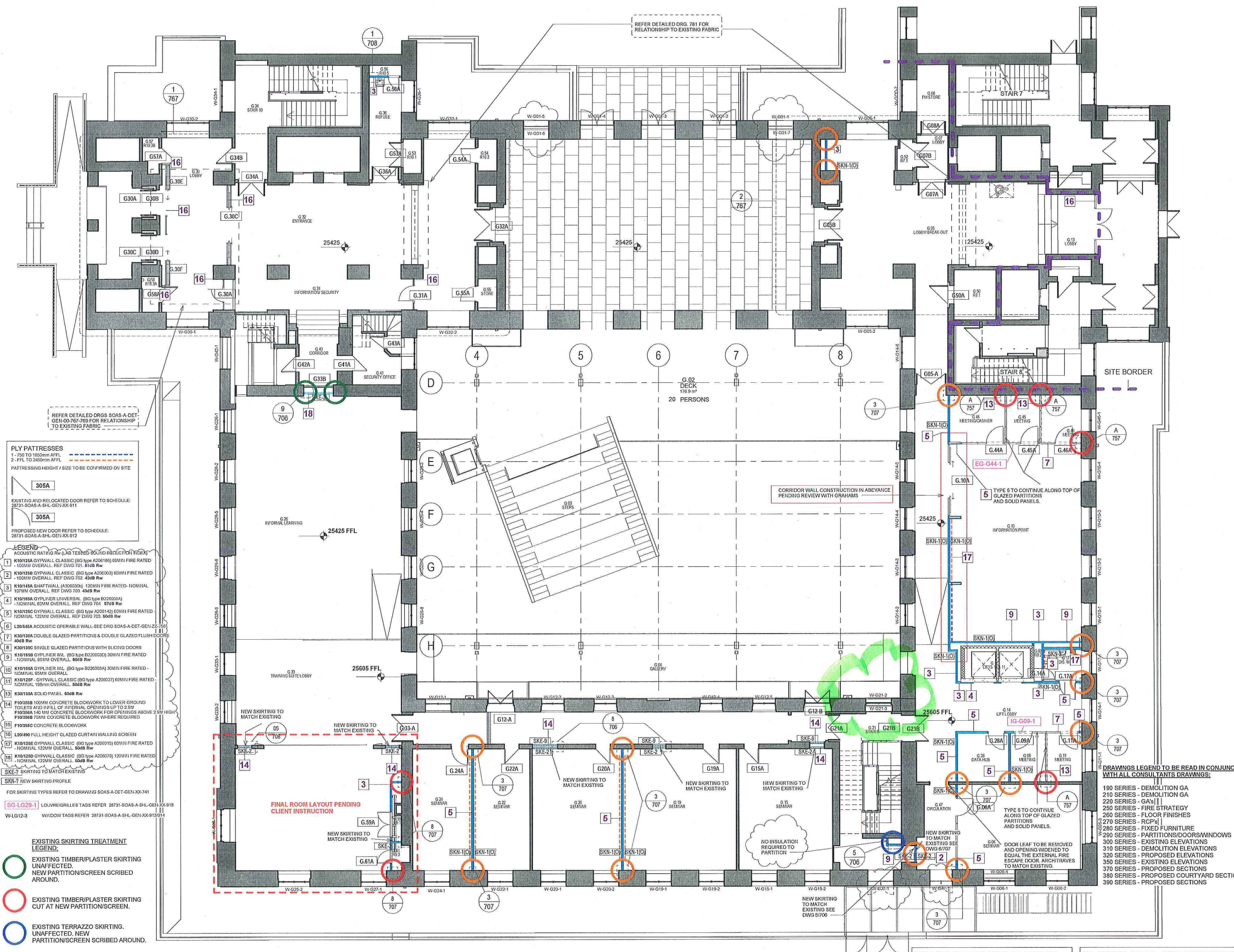
mace
 155 Moorgate, London, EC2M 6XB
 www.macegroup.com

PROJECT TITLE: **SOAS INTO SENATE HOUSE MALET STREET LONDON, WC1E 7HU**

DRAWING TITLE: **GROUND FLOOR DOOR/WINDOW/PARTITION KEY PLAN**

PROJECT NO.	28731	DRAWN BY	DC	DATE	25/07/13
CHK BY	LT	DATE	25/07/13		
APP BY	-	DATE	25/07/13		
PROJECT CODE	DISC.	VIEW TYPE	VIEW CAT.	LEVEL	DWG. NO.
SOAS - A - PLN - GEN - 00 - 292					
SHEET NO.	1 of 1	SCALE	As indicated	ORIG. SHEET SIZE	REV.
				A1	C 6

INFORMATION HANDLING CLASSIFICATION: **UNRESTRICTED**



- PLY PATTERNS**
 1 - 750 TO 1800mm AFFL
 2 - FFL TO 2450mm AFFL
 PATTERNING HEIGHT / SIZE TO BE CONFIRMED ON SITE
- 305A**
 EXISTING AND RELOCATED DOOR REFER TO SCHEDULE: 28731-SOAS-A-SHL-GEN-XX-911
305A
 PROPOSED NEW DOOR REFER TO SCHEDULE: 28731-SOAS-A-SHL-GEN-XX-912
- LEGEND**
 1 K101258 GYPWALL CLASSIC (BG type A200189) 60MIN FIRE RATED - 100MM OVERALL. REF DWG 701_816B Rw
 2 K101258 GYPWALL CLASSIC (BG type A200200) 60MIN FIRE RATED - 100MM OVERALL. REF DWG 702_426B Rw
 3 K101454 SHAFTHULL (A200200) 120MIN FIRE RATED - NOMINAL 107MM OVERALL. REF DWG 703_448B Rw
 4 K101654 GYPFLNER UNIVERSAL (BG type B220038A) - NOMINAL 60MM OVERALL. REF DWG 704_876B Rw
 5 K101250 GYPWALL CLASSIC (BG type A200142) 60MIN FIRE RATED - NOMINAL 122MM OVERALL. REF DWG 705_504B Rw
 6 L200454 ACUSTIC OPERABLE WALL-SEE DRG SOAS-A-DET-GEN-XX-775
 7 K30130A DOUBLE GLAZED PARTITIONS & DOUBLE GLAZED FLUSH DOORS 40dB Rw
 8 K30120C SINGLE GLAZED PARTITIONS WITH SLIDING DOORS
 9 K10155B GYPFLNER RWL (BG type B220030J) 30MIN FIRE RATED - NOMINAL 95MM OVERALL. 60dB Rw
 10 K10165A GYPFLNER RWL (BG type B220030A) 30MIN FIRE RATED - NOMINAL 95MM OVERALL
 11 K10125F - GYPWALL CLASSIC (BG type A200227) 60MIN FIRE RATED - NOMINAL 195mm OVERALL. 60dB Rw
 12 K30130A SOLID PANEL. 60dB Rw
 13 F10355B 100MM CONCRETE BLOCKWORK TO LOWER GROUND TOLERES AND AFFL OF INTERNAL OPENINGS UP TO 2.9M
 F10355A 140 MM CONCRETE BLOCKWORK FOR OPENINGS ABOVE 2.9M HIGH
 F10355B 75MM CONCRETE BLOCKWORK WHERE REQUIRED
 14 F10355C CONCRETE BLOCKWORK
 15 L20480 FULL HEIGHT GLAZED CURTAIN WALLING SCREEN
 16 K10125E GYPWALL CLASSIC (BG type A200115) 60MIN FIRE RATED - NOMINAL 122MM OVERALL. 60dB Rw
 17 K10125D GYPWALL CLASSIC (BG type A200079) 120MIN FIRE RATED - NOMINAL 122MM OVERALL. 60dB Rw
 18 SKE-7 SKIRTING TO MATCH EXISTING
 SKE-7 NEW SKIRTING PROFILE
 FOR SKIRTING TYPES REFER TO DRAWING SOAS-A-DET-GEN-XX-741
 SG-LG29-1 LOUVRE/GRILLES TAGS REFER 28731-SOAS-A-SHL-GEN-XX-918
 W-LG12-3 WINDOW TAGS REFER 28731-SOAS-A-SHL-GEN-XX-913/914
- EXISTING SKIRTING TREATMENT LEGEND:**
 EXISTING TIMBER/PLASTER SKIRTING UNAFFECTED.
 NEW PARTITION/SCREEN SCRIBED AROUND.
 EXISTING TIMBER/PLASTER SKIRTING CUT AT NEW PARTITION/SCREEN.
 EXISTING TERRAZZO SKIRTING. UNAFFECTED. NEW PARTITION/SCREEN SCRIBED AROUND.
 EXISTING SKIRTING & DADO UNAFFECTED. NEW PARTITION/SCREEN SCRIBED AROUND.

CHANGES BETWEEN T2 AND C3:
 1- NEW DOOR 120MIN FR ADD TO LOCATION: G.59A, G.61A. 2- NEW DOOR 120MIN FR CHANGE LOCATION AND SIZE, IN LOCATION: G.14A.

REFER TO 'SOAS-A-DET-GEN-XX-755' (PROPOSED DRY LINING DETAILS) FOR DETAILS OF FIRE AND ACUSTIC BARRIERS BELOW SUSPENDED FLOORS AND BELOW HOLLOW POT SOFFITS.

THE ACUSTIC AND FIRE RATING REQUIREMENT OF THE PARTITIONS MAY BE LESS THAN WHAT IS STATED IN THE SPECIFICATION, DEPENDING ON SPECIFIC LOCATION