

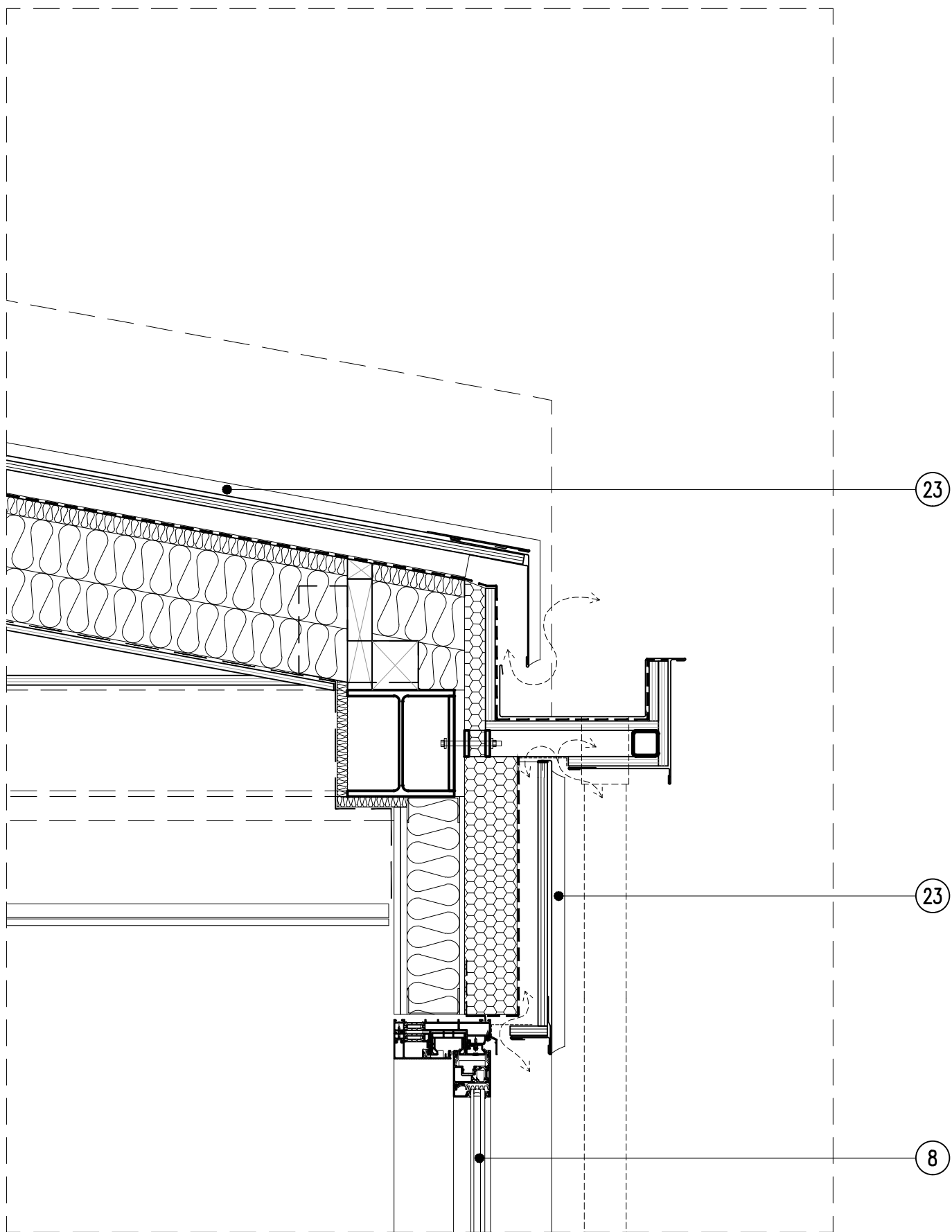


ROOF MATERIAL LEGEND

- R1 – Inverted Roof System (Paving Slabs)
- R2 – Inverted Roof System (Stone Ballast)
- R3 – Standing Seam Roofing
- R4 – Slate Roofing
- R6 – Lead Dormer
- R7 – Composite Decking (Inverted Roof System)
- R8 – Composite Decking (Steel Frame)
- R9 – Timber Fencing
- R10 – Pre Cast Concrete Paving Slabs

FACADE MATERIAL LEGEND

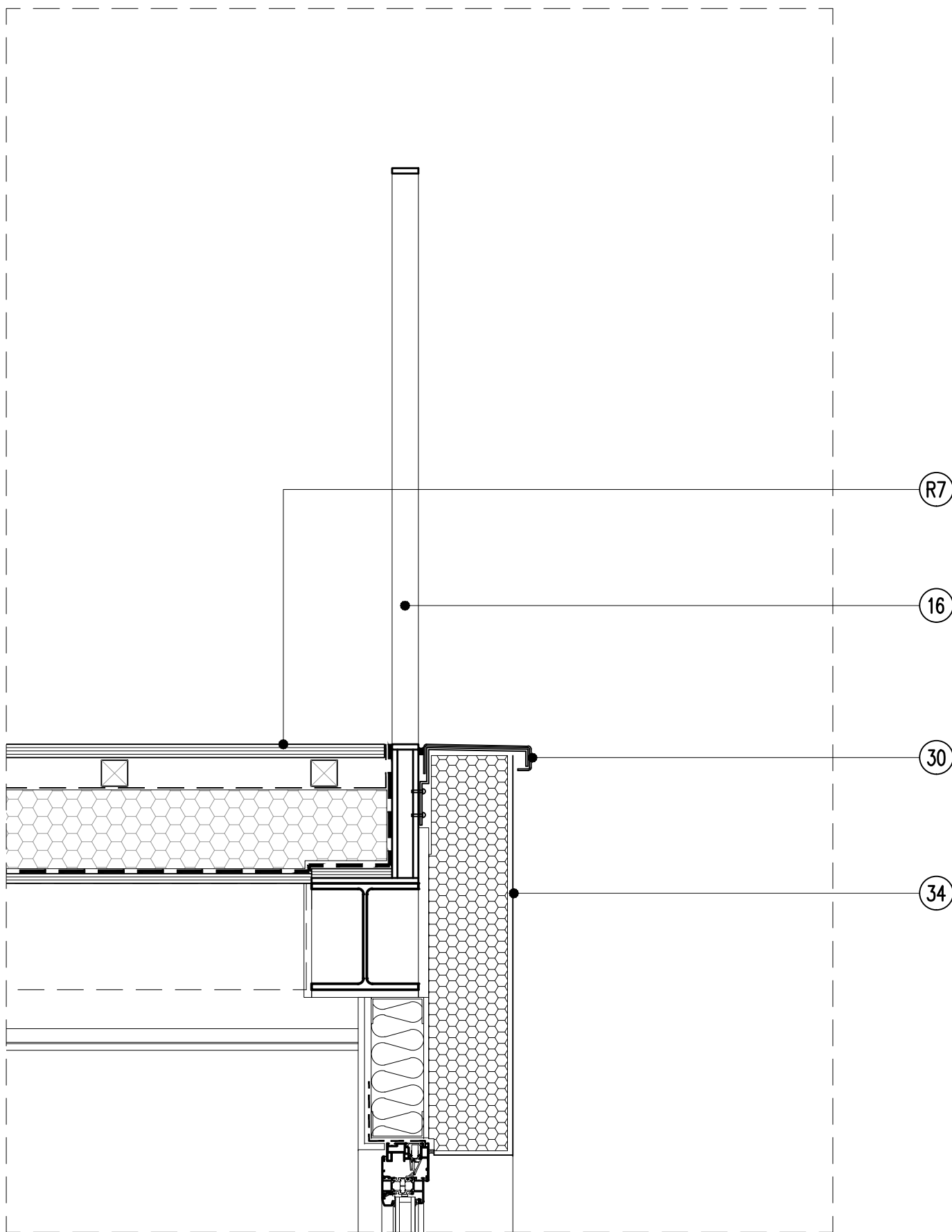
1. Clay Facing Brickwork
2. Cast Stone Cornice
3. 25/14 Cavity Wall Tie System
4. Plastic Weep Holes
5. Partial Fill Cavity Insulation
6. Flexible Cavity Tray
7. Brickwork Support System
8. Aluminium Sliding Door
9. Aluminium Louvres (Brise Soleil)
10. Plant Screen
11. Aluminium Rainscreen Cladding
12. Perforated Aluminium Panel
13. Cavity Closer
14. Cavity Barrier (Rainscreen)
15. S/S Windpost
16. M/S Steel Balustrade
17. Timber Sash Windows
18. Timber Sash Windows
19. Rainscreen Insulation
20. Rainscreen Breather Membrane
21. Vapour Control Layer
22. External Wall Steel Framing System
23. Zinc Standing Seam Walling
24. Cavity Barrier (Brick Wall)
25. Aluminium Window Reveal
26. PPC Aluminium Cill
27. Aluminium Window
28. Cast Stone Sub Cill
29. Cast Stone Coping
30. PPC Aluminium Coping
31. Timber Fence
32. Precast Brick Arch
33. Rendered Window Reveal
34. Insulated Render System
35. Aluminium Folding Sliding Door
36. Cavity Barrier (Insulated Render)
37. Aluminium Soffit Cladding



01

ROOF DETAIL (5TH LEVEL)

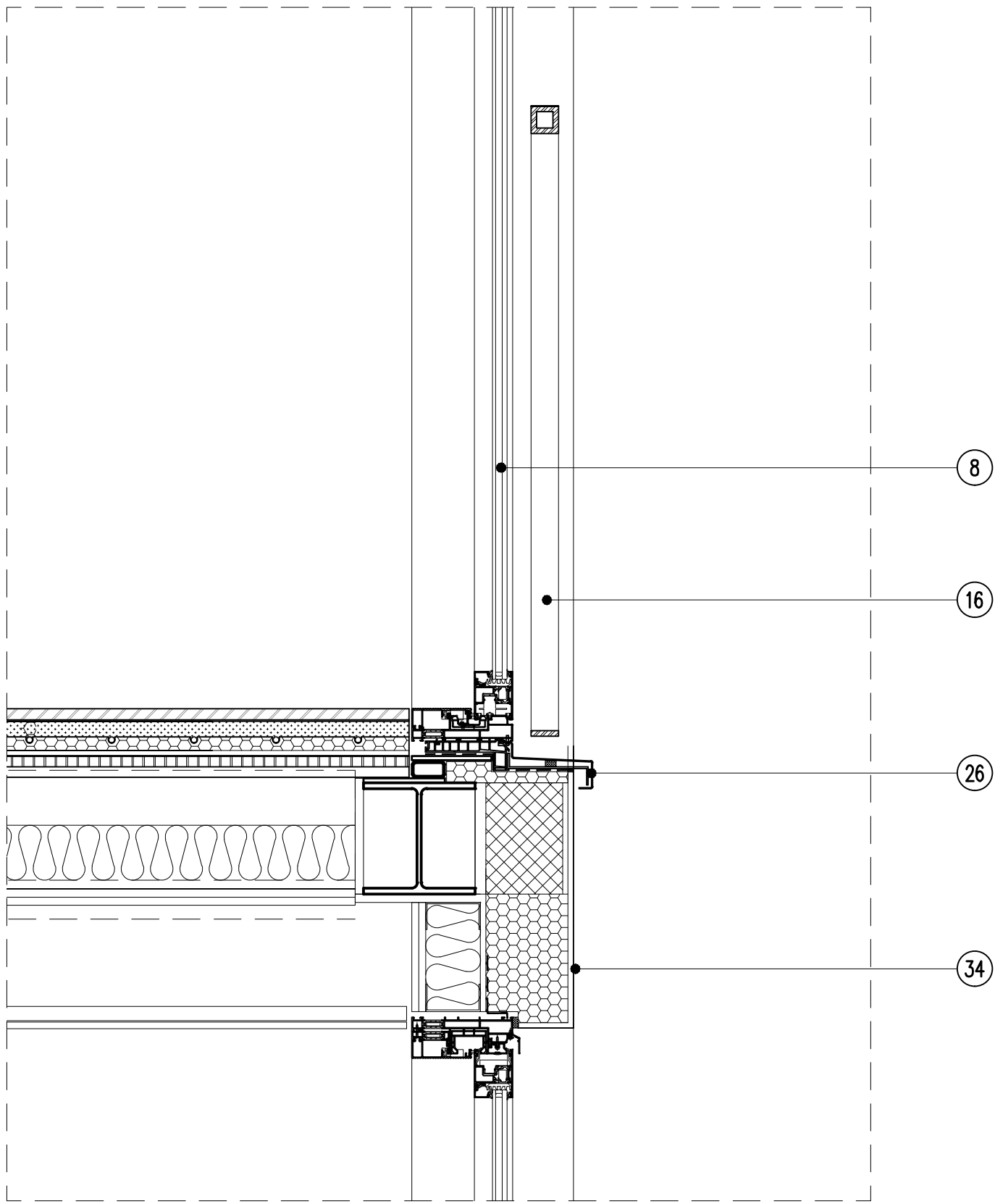
SCALE: 1:10 (A1)



02

BALUSTRADE FIXING DETAIL (4TH FLOOR)

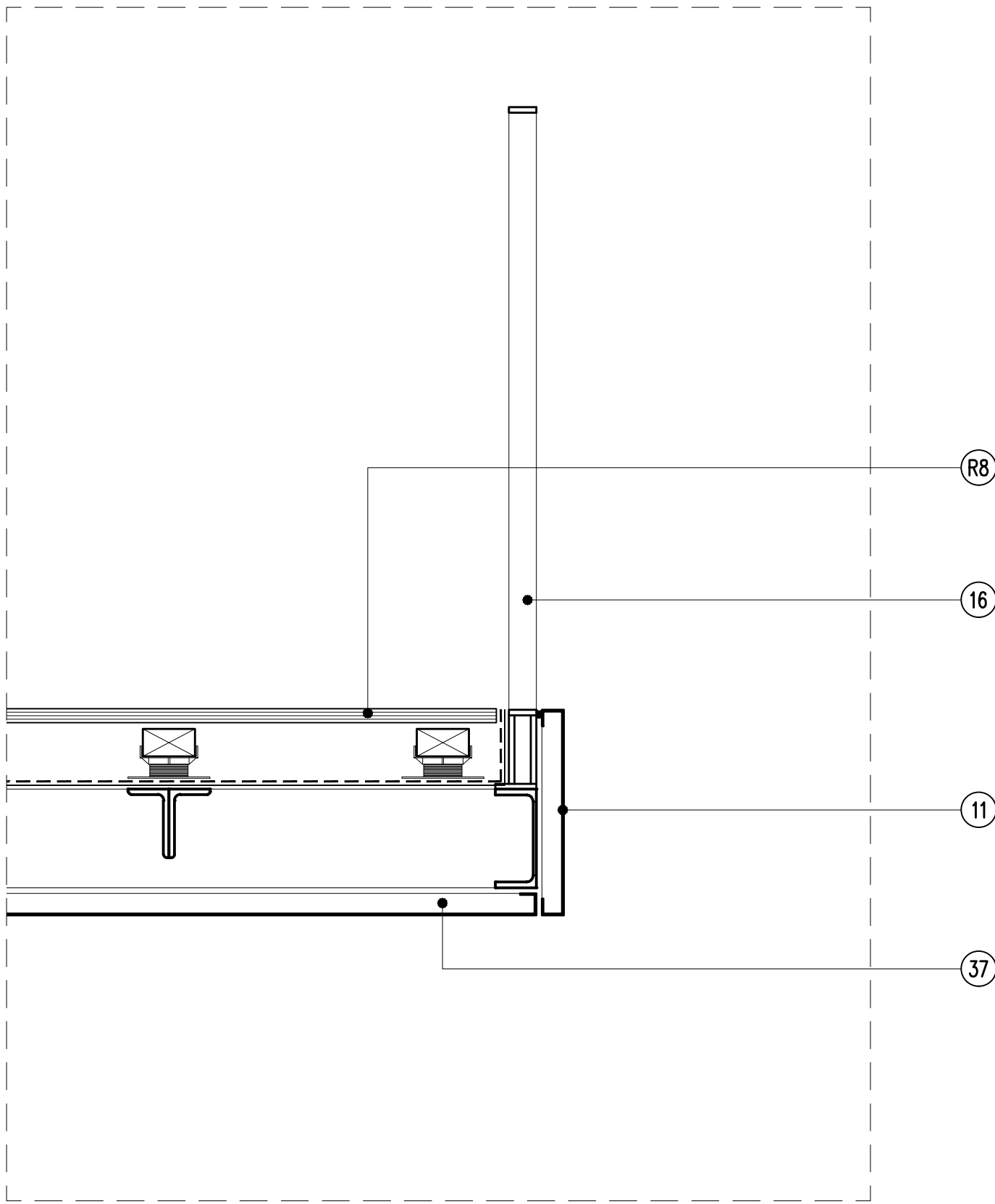
SCALE: 1:10 (A1)



03

BALUSTRADE FIXING DETAIL (2ND FLOOR)

SCALE: 1:10 (A1)



04

BALUSTRADE FIXING DETAIL (2ND FLOOR)

SCALE: 1:10 (A1)

This scale is 10cm in length when printed at the size indicated in the title block

01234510cm

| | | |
|-----|------------------------|----------|
| - | Issued for information | 04/08/15 |
| Rev | | Date |

Rolfe Judd

Architecture Planning Interiors

Old Church Court, Claylands Road, The Oval, London SW8 1NZ

T 020 7556 1500

www.rolfe-judd.co.uk

Client

Goodge Street

(Tottenham Court Rd) LLP

Project

11-13 Goodge Street

Drawing

Proposed Balustrades

Typical Fixing Details

| Scale | Date | Status |
|-------------|----------------|----------|
| Varies (A1) | Jan 15 | Planning |
| Job Number | Drawing Number | Revision |
| 5342 | T(20) DE07 | - |

G:\5342\T_Series\Record of Submissions\Planning Condition Discharge\150130_Con