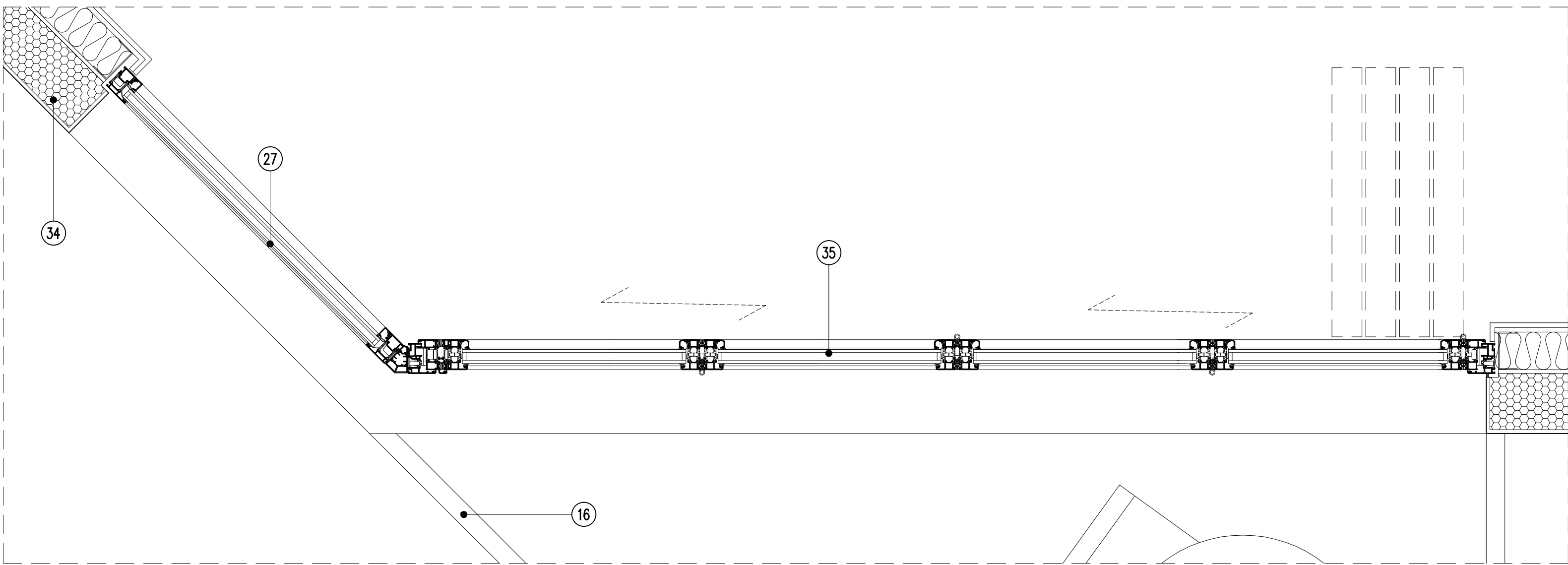


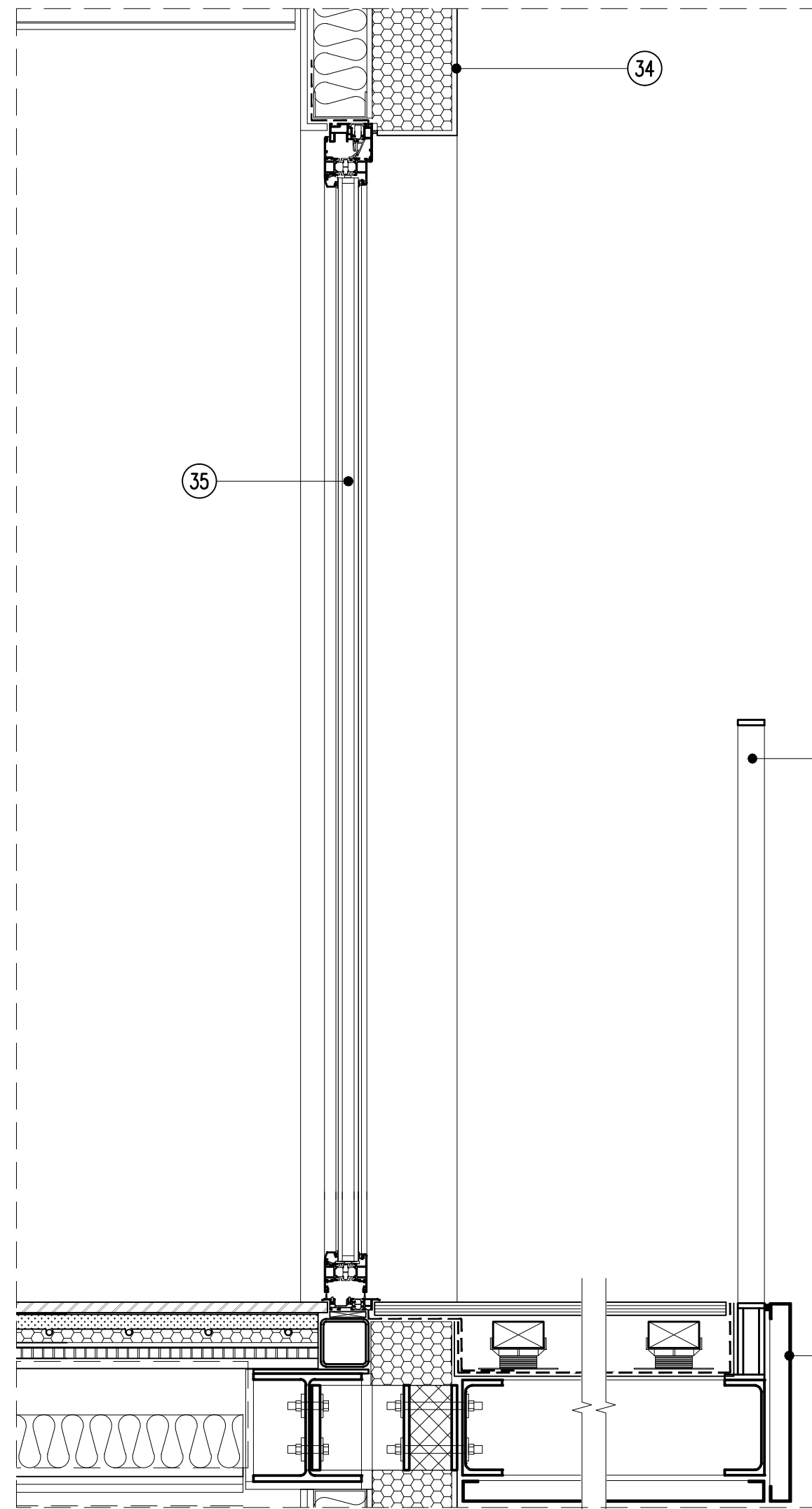
01 WINDOW & FOLDING DOOR ELEVATION

SCALE: 1:10 (A1)



02 WINDOW & FOLDING DOOR PLAN

SCALE: 1:10 (A1)



03 FOLDING DOOR SECTION

SCALE: 1:10 (A1)

Type 4  
Window



ROOF MATERIAL LEGEND

- R1 - Inverted Roof System (Paving Slabs)  
R2 - Inverted Roof System (Stone Ballast)  
R3 - Standing Seam Roofing  
R4 - Slate Roofing  
R6 - Lead Dormer  
R7 - Composite Decking (Inverted Roof System)  
R8 - Composite Decking (Steel Frame)  
R9 - Timber Fencing  
R10 - Pre Cast Concrete Paving Slabs

FACADE MATERIAL LEGEND

1. Clay Facing Brickwork  
2. Cast Stone Cornice  
3. 25/14 Cavity Wall Tie System  
4. Plastic Weep Holes  
5. Partial Fill Cavity Insulation  
6. Flexible Cavity Tray  
7. Brickwork Support System  
8. Aluminium Sliding Door  
9. Aluminium Louvres (Brise Soleil)  
10. Plant Screen  
11. Aluminium Rainscreen Cladding  
12. Perforated Aluminium Panel  
13. Cavity Closer  
14. Cavity Barrier (Rainscreen)  
15. S/S Windpost  
16. M/S Steel Balustrade  
17. Timber Sash Windows  
18. Timber Sash Windows  
19. Rainscreen Insulation  
20. Rainscreen Breather Membrane  
21. Vapour Control Layer  
22. External Wall Steel Framing System  
23. Zinc Standing Seam Walling  
24. Cavity Barrier (Brick Wall)  
25. Aluminium Window Reveal  
26. PPC Aluminium Cill  
27. Aluminium Window  
28. Cast Stone Sub Cill  
29. Cast Stone Coping  
30. PPC Aluminium Coping  
31. Timber Fence  
32. Precast Brick Arch  
33. Rendered Window Reveal  
34. Insulated Render System  
35. Aluminium Folding Sliding Door  
36. Cavity Barrier (Insulated Render)  
37. Aluminium Soffit Cladding

- Issued for information 04/08/15

Rev Date

**Rolfe Judd**

Architecture Planning Interiors  
Old Church Court, Claylands Road, The Oval, London SW8 1NZ  
T 020 7556 1500  
www.rolfe-judd.co.uk

Client  
Goodge Street  
(Tottenham Court Rd) LLP

Project  
11-13 Goodge Street

Drawing  
Proposed Window Details  
Type 4

Scale	Date	Status
Varies (A1)	Jan 15	Planning

Job Number	Drawing Number	Revision
5342	T(20) DE05	-

G:\5342\T\_Series\Record of Submissions\Planning Condition Discharge\150130\_Con