



ROOF MATERIAL LEGEND

- R1 - Inverted Roof System (Paving Slabs)
R2 - Inverted Roof System (Stone Ballast)
R3 - Standing Seam Roofing
R4 - Slate Roofing
R6 - Lead Dormer
R7 - Composite Decking (Inverted Roof System)
R8 - Composite Decking (Steel Frame)
R9 - Timber Fencing
R10 - Pre Cast Concrete Paving Slabs

FACADE MATERIAL LEGEND

1. Clay Facing Brickwork
2. Cast Stone Cornice
3. 25/14 Cavity Wall Tie System
4. Plastic Weep Holes
5. Partial Fill Cavity Insulation
6. Flexible Cavity Tray
7. Brickwork Support System
8. Aluminium Sliding Door
9. Aluminium Louvres (Brise Soleil)
10. Plant Screen
11. Aluminium Rainscreen Cladding
12. Perforated Aluminium Panel
13. Cavity Closer
14. Cavity Barrier (Rainscreen)
15. S/S Windpost
16. M/S Steel Balustrade
17. Timber Sash Windows
18. Timber Sash Windows
19. Rainscreen Insulation
20. Rainscreen Breather Membrane
21. Vapour Control Layer
22. External Wall Steel Framing System
23. Zinc Standing Seam Walling
24. Cavity Barrier (Brick Wall)
25. Aluminium Window Reveal
26. PPC Aluminium Cill
27. Aluminium Window
28. Cast Stone Sub Cill
29. Cast Stone Coping
30. PPC Aluminium Coping
31. Timber Fence
32. Precast Brick Arch
33. Rendered Window Reveal
34. Insulated Render System
35. Aluminium Folding Sliding Door
36. Cavity Barrier (Insulated Render)
37. Aluminium Soffit Cladding

- Issued for information 04/08/15
Rev Date

Rolfe Judd

Architecture Planning Interiors
Old Church Court, Claylands Road, The Oval, London SW8 1NZ
T 020 7556 1500
www.rolfe-judd.co.uk

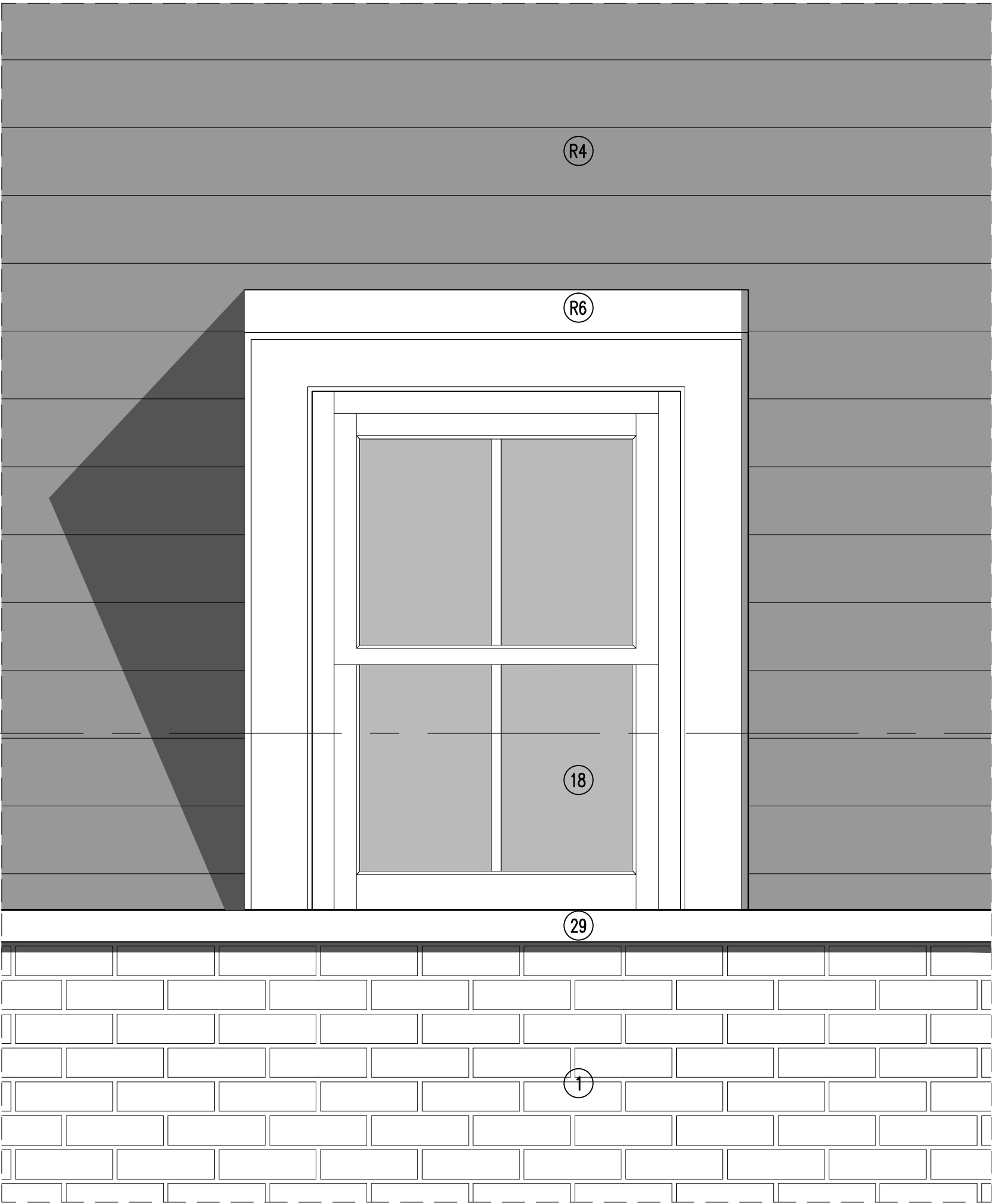
Client
**Goodge Street
(Tottenham Court Rd) LLP**

Project
11-13 Goodge Street

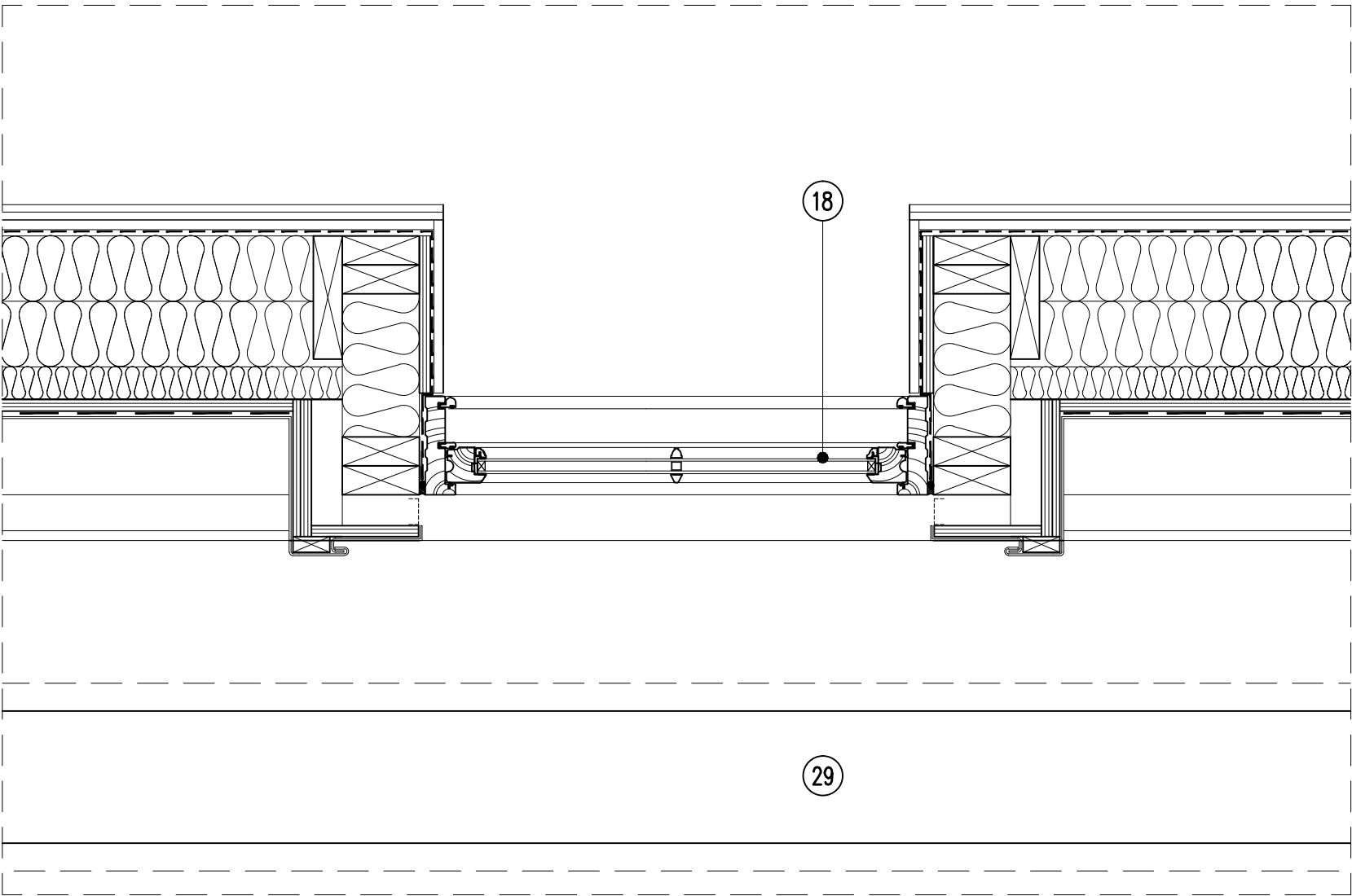
Drawing
**Proposed Window Details
Type 2**

Scale	Date	Status
Varies (A1)	Jan 15	Planning
Job Number	Drawing Number	Revision
5342	T(20) DE02	-

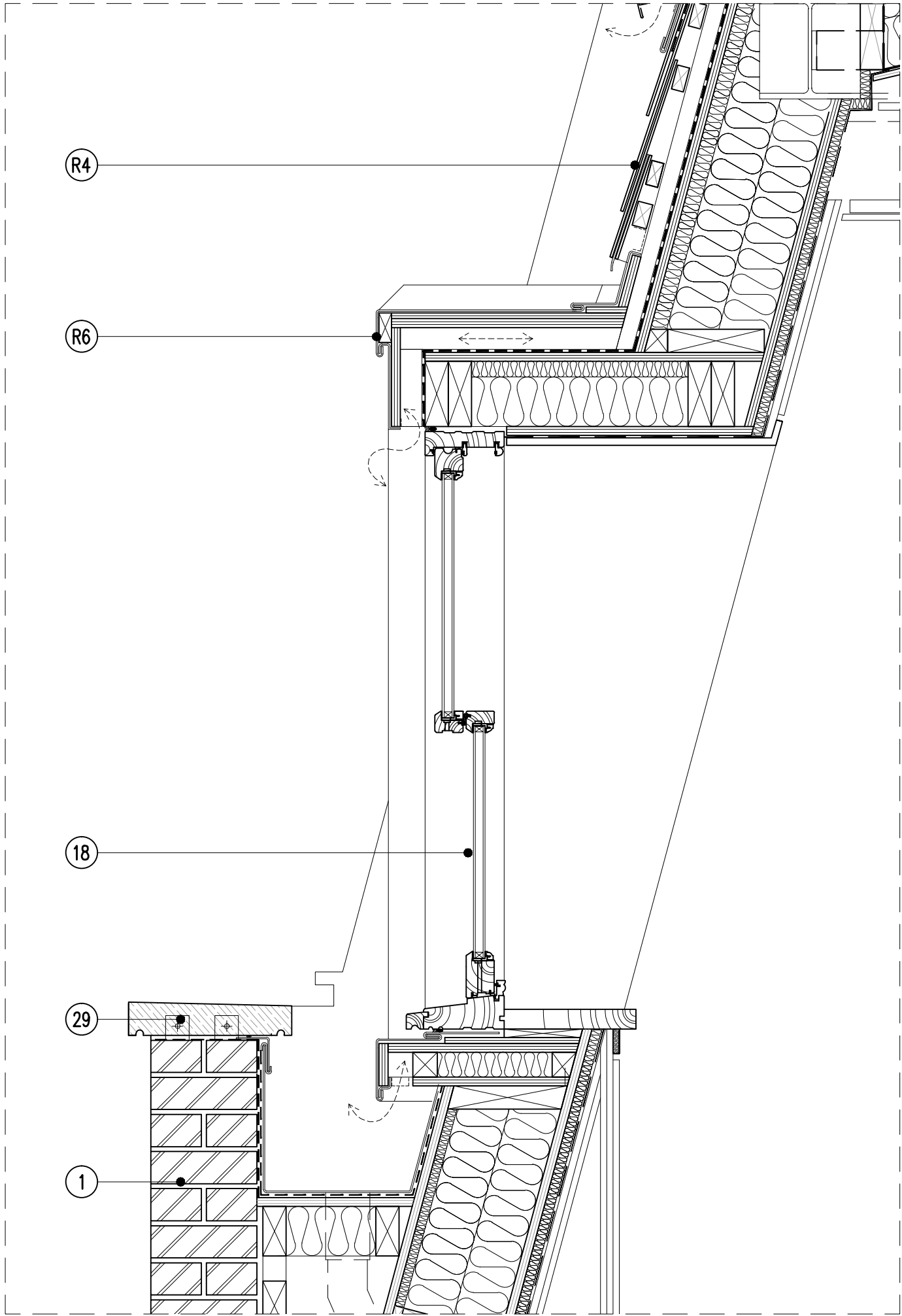
G:\5342\T_Series\Record of Submissions\Planning Condition Discharge\150130_Con



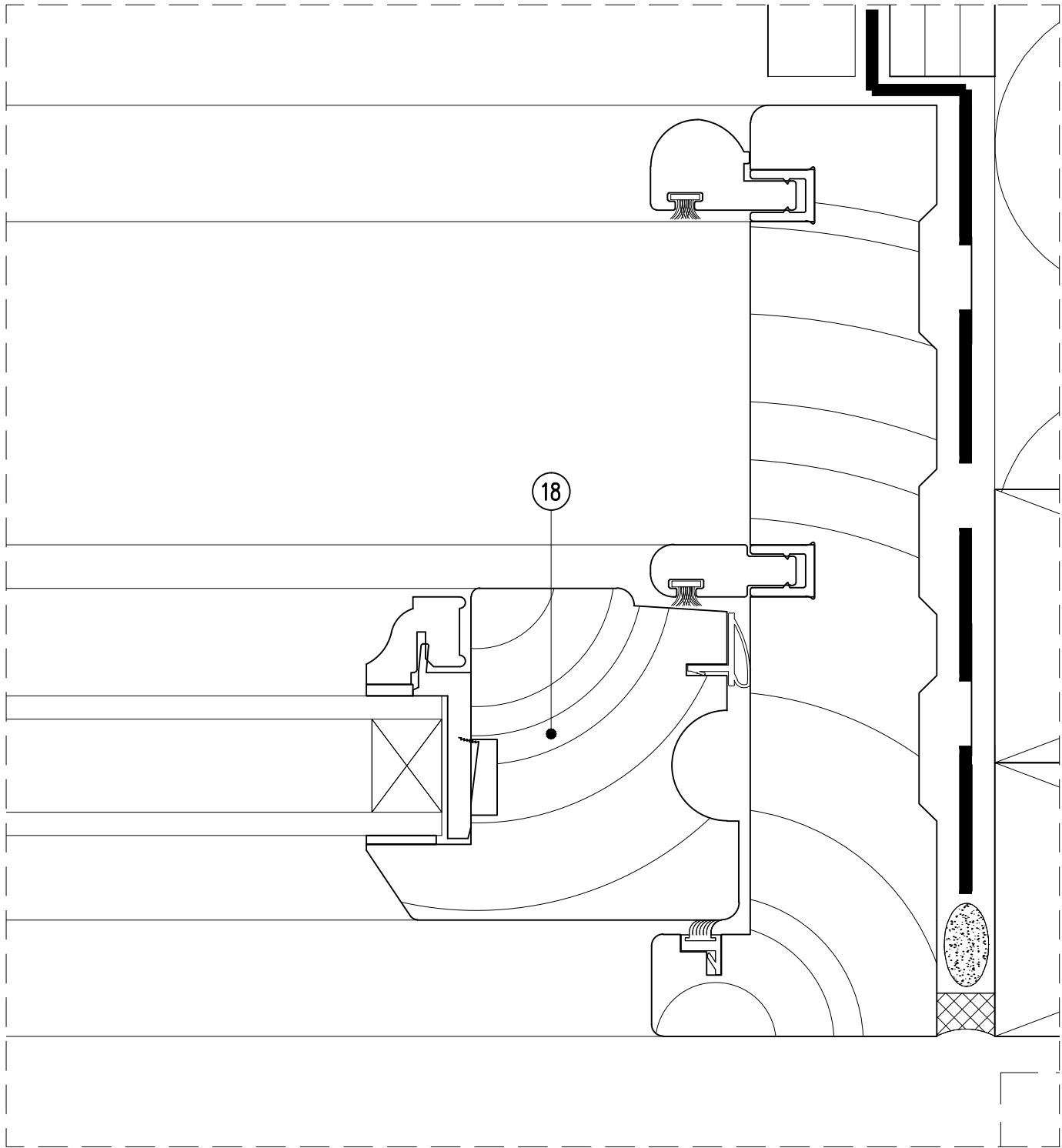
01 DORMER WINDOW ELEVATION
SCALE: 1:10 (A1)



02 DORMER WINDOW PLAN
SCALE: 1:10 (A1)



03 DORMER WINDOW SECTION
SCALE: 1:10 (A1)



04 DORMER WINDOW BAR DETAIL
SCALE: 1:1 (A1)