

Camden Core Strategy 2010-2025

Local Development Framework



**If you would like this document in large print
or Braille, or in another language, please
contact 020 7974 5615**

Find out more about this document and the LDF by visiting camden.gov.uk/ldf
or by calling the LDF hotline 020 7974 5615/2043.

Forward Planning
London Borough of Camden
Town Hall Extension
Argyle Street
London WC1H 8EQ

Published November 2010.

Camden's Local Development Framework. Core Strategy 2010.

CS5. Managing the impact of growth and development

- 5.1 The overall approach of the Core Strategy, as set out in policy CS1, is to manage Camden's growth to make sure that its opportunities and benefits are delivered and sustainable development is achieved, while continuing to conserve and enhance the features that make Camden such an attractive place to live, work and visit. This flows from the Camden Community Strategy theme of a sustainable Camden that adapts to a growing population. Policy CS5 provides more information on our approach to managing the impact of growth in the borough.

CS POLICY

CS5 – Managing the impact of growth and development

The Council will manage the impact of growth and development in Camden. We will ensure that development meets the full range of objectives of the Core Strategy and other Local Development Framework documents, with particular consideration given to:

- a) providing uses that meet the needs of Camden's population and contribute to the borough's London-wide role;
- b) providing the infrastructure and facilities needed to support Camden's population and those who work in and visit the borough;
- c) providing sustainable buildings and spaces of the highest quality; and
- d) protecting and enhancing our environment and heritage and the amenity and quality of life of local communities.

The Council will protect the amenity of Camden's residents and those working in and visiting the borough by:

- e) making sure that the impact of developments on their occupiers and neighbours is fully considered;
- f) seeking to ensure development contributes towards strong and successful communities by balancing the needs of development with the needs and characteristics of local areas and communities; and
- f) requiring mitigation measures where necessary.

Making sure development achieves the objectives of the Core Strategy

- 5.2 Central to managing Camden's future growth is the need to consider not just the scale and nature of that growth, but how it is provided and the effect on those who live in the area and the borough as a whole. All development in Camden, large or small, whether located in growth areas, highly accessible locations or in other parts of the borough, should take place in accordance with all relevant policies in the Core Strategy and the other documents that form part of Camden's Local Development Framework (see paragraph 4 in the Introduction) to ensure that the Council's vision for the borough is achieved. The Council will seek to ensure that the borough's growth brings benefits and opportunities to all.
- 5.3 The second section of this Core Strategy, *Meeting Camden's needs – Providing homes, jobs and facilities*, sets out our approach to providing the land uses, infrastructure and facilities that are needed to support Camden's communities, workers and visitors. This includes places to live, work and shop, community facilities and provision for walking, cycling and public transport. The section also sets out our approach to the unique issues faced in Central London, the home to many of the uses that contribute to London's role as a capital and major international city, as well as long-established residential communities.

- 5.4 One of the key elements of managing Camden's growth is securing the infrastructure and services needed to support Camden's growing numbers of residents, workers and visitors. To identify the infrastructure need in the borough in future years we commissioned the Camden Infrastructure Study 2009. This work formed the basis of the schedule in Appendix 1, which set out identified key infrastructure programmes and projects including transport, utilities, emergency services, education, health and other community facilities. It gives information on the nature of each infrastructure scheme, where it will be located, who will lead on its delivery and when it is expected to be provided. As the boundaries of the growth area are relatively tightly drawn, taking in the main development opportunities, the infrastructure to support a particular growth area may be provided outside its boundary. Please see section 19 – *Delivering and monitoring the Core Strategy* for more detail on our approach to infrastructure provision. In addition, the individual sections in the Core Strategy also contain details of infrastructure requirements and provision that are relevant to that section (for example, policy CS15 on open space and policy CS11 on transport.)
- 5.5 The third section of the Core Strategy, *A sustainable and attractive Camden – Tackling climate change and improving and protecting Camden's environment and quality of life*, focuses on making sure that growth is sustainable and properly takes into account the character of Camden and the aspects of the borough that make it such an attractive place to live, work and visit. It sets out how we intend to make Camden a low carbon, low waste borough; deal with climate change; and protect, and where possible enhance, our built environment, heritage and open spaces. It also sets out our approach to improving the safety and health of the community.
- 5.6 Our Camden Development Policies Local Development Framework document will be one of the main mechanisms by which we will seek to deliver to vision and objectives in the Core Strategy. It sets out planning policies that provide more detail of our approach to many of the matters covered in this Core Strategy. We will use Camden Development Policies alongside the Core Strategy when we determine applications for planning permission.

Protecting amenity

- 5.7 Camden's high level of amenity – the features of a place that contribute to its attractiveness and comfort – is a major factor in the quality of life of the borough's residents, workers and visitors and fundamental to Camden's attractiveness and success. However, Camden's inner London location, the close proximity of various uses and the presence of major roads and railways can mean that privacy, noise and light can be particular issues in the borough.
- 5.8 Protecting amenity is, therefore, a key part of successfully managing growth in Camden. We will expect development to avoid harmful effects on the amenity of existing and future occupiers and nearby properties or, where this is not possible, to take appropriate measures to minimise potential negative impacts. More detail and guidance on our approach to amenity is contained in Camden Development Policies policy DP26 – and our Camden Planning Guidance supplementary document. Other policies in Camden Development Policies also contribute to protecting amenity in the borough by setting out our detailed approach to specific issues, such as the impact of food, drink and entertainment uses (policy DP12), noise and vibration (policy DP28) and air quality (policy DP32)

Promoting successful communities

- 5.9 A key element to our overall strategy of managing Camden's future growth is to ensure that the opportunities and benefits of this growth are delivered in a way that meets the needs of Camden's residents and promotes strong and successful communities. In assessing development proposals, the Council will take into account the needs and benefits of the development alongside the individual characteristics and needs of the local area and community, and will seek to strike a balance between them. Where relevant, we will take into account the cumulative impacts of developments, or particular types of development, on local areas and communities.

Key evidence and references

- Camden Together – Camden's Sustainable Community Strategy; 2007-2012
- The London Plan (consolidated with alterations since 2004); Mayor of London; 2008





Section 2

Meeting Camden's needs

– Providing homes, jobs and facilities

- 6.1 Section 1 above sets out the Council's overall approach to the distribution and management of Camden's growth to 2025. Section 2 provides our approach to making sure we provide the homes, jobs, facilities and infrastructure needed to support the growth in the number of people living in, working in and visiting the borough. It focuses on:
- providing homes to meet housing need and targets, securing affordable homes, and encouraging mixed communities;
 - providing for new shop floorspace to meet predicted demand and promoting our town centres, including by setting out our specific objectives for each centre;
 - securing a strong economy in Camden that includes everyone;
 - supporting the unique role of Central London;
 - providing the community facilities and services needed by Camden's communities and people who work in and visit the borough;
 - ensuring the transport needed to support Camden's growth is provided and promoting more sustainable travel.



CS6. Providing quality homes

- 6.2 One of the four themes of Camden's Community Strategy is *A Sustainable Camden that adapts to a growing population*. Following from this, the Core Strategy aims to manage growth so it works positively for Camden. One element of this is securing sufficient housing of the right type and quality.
- 6.3 The Council shares the government's goal of seeking to ensure that everyone has the opportunity to live in a decent home at a price they can afford in a community where they want to live. We will therefore seek to establish a plentiful supply and a broad range of homes. However, Camden is a relatively small area within a much larger housing market, and we cannot realistically expect to meet the needs of everyone that might wish to live in the borough. This part of the Core Strategy therefore sets out:
- the overall numbers of additional homes we expect to be built in the borough;
 - the proportion of affordable housing that the Council will seek;
 - our priorities in terms of mix of sizes and types of homes that are needed for particular groups of people; and
 - the flexible implementation tools we will use to support continued delivery if economic conditions threaten the supply of homes.
- 6.4 To provide well-designed homes, proposals will need to address all the policies in the Core Strategy. In addition, Building for Life criteria set a national standard for well-designed homes and neighbourhoods. These have been prepared by a partnership of agencies led by the Commission for Architecture and the Built Environment (CABE) and the Home Builders Federation.
- 6.5 Policy CS6 relates to a number of different forms of housing which are suitable for different individuals and households. These forms of housing include:
- self-contained houses and flats (Use Class C3) (the predominant form);
 - live/ work units, which are self-contained homes that include a dedicated work area (they are outside any planning use class, but we will treat them in the same way as Use Class C3 for the operation of our Local Development Framework policies);
 - bedsit rooms that share facilities such as toilets, bathrooms and kitchens often known as houses in multiple occupation or HMOs, some with 3 to 6 occupiers fall within Use Class C4, but most are outside any planning use class);
 - hostels where shared accommodation is managed for a particular group of people (e.g. students) and occupiers may stay for several months (also outside any planning use class);
 - those nursing homes, care homes and parts of hospitals where people live permanently, such as nurses' accommodation (parts of Use Class C2); and
 - residential accommodation that is ancillary to another use, such as living areas for managers, caretakers and other staff.
- 6.6 Policy CS6 does not deal with:
- those hospitals and care facilities where patients and staff are only present on a temporary or working-hours basis;
 - hotels (Use Class C1); or
 - hostels aimed at tourists and backpackers.
- Camden's health and well-being are considered in Policy CS16, which relates in part to hospitals and care facilities. Tourism is considered in Policy CS8, which relates in part to hotels and tourist hostels.
- 6.7 Policy CS6 is concerned with the quantity of housing that is needed and the types of homes that are needed. However, a wider range of considerations feed into housing quality, including sustainability and responsiveness to climate change; the standard of design, layout and construction; integration with the surrounding area; residential amenity; contribution to the character of the neighbourhood; community safety; and the availability of local facilities and public transport. These wider considerations are dealt with in other policies throughout the Core Strategy.

CS POLICY

CS6 – Providing quality homes

The Council will aim to make full use of Camden's capacity for housing by:

- a) maximising the supply of additional housing to meet or exceed Camden's target of 5,950 homes from 2007-2017, including 4,370 additional self-contained homes;
- b) maximising the supply of additional housing over the entire plan period to meet or exceed a target of 8,925 homes from 2010-2025, including 6,550 additional self-contained homes;
- c) supporting the supply of additional student housing, bedsits and other housing with shared facilities providing this does not prejudice the Council's ability to meet the target for the supply of additional self-contained homes, the balance of uses in the area; and the quality of residential amenity or the character of the surrounding area;
- d) minimising the net loss of existing homes;
- e) regarding housing as the priority land-use of Camden's Local Development Framework.

The Council will aim to secure high quality affordable housing available for Camden households that are unable to access market housing by:

- f) seeking to ensure that 50% of the borough-wide target for additional self-contained homes is provided as affordable housing;
- g) seeking to negotiate a contribution from specific proposals on the basis of:
 - the maximum reasonable amount of affordable housing under the specific circumstances of the site, including the financial viability of the development,
 - an affordable housing target of 50% of the total addition to housing floorspace, and
 - guidelines of 60% social rented housing and 40% intermediate affordable housing;

- h) minimising the net loss of affordable housing;
- i) regenerating Camden's housing estates and seeking to bring Council stock up to the Decent Homes standard by 2012.

The Council will aim to minimise social polarisation and create mixed and inclusive communities across Camden by:

- j) seeking a diverse range of housing products in the market and affordable sectors to provide a range of homes accessible across the spectrum of household incomes;
- k) seeking a range of self-contained homes of different sizes to meet the Council's identified dwelling-size priorities;
- l) seeking a variety of housing types suitable for different groups, including families, people with mobility difficulties, older people, homeless people and vulnerable people; and
- m) giving priority to development that provides affordable housing and housing for vulnerable people.

The Council will monitor the delivery of additional housing against the target for housing supply, and will seek to maintain supply at the rate necessary to meet or exceed the target. In seeking to maintain the housing supply, the Council will adjust the type and mix of housing sought, having regard to the financial viability of development, the sales or capital value of different house types and tenures, and the needs of different groups.

Making full use of Camden's capacity for housing

- 6.8 The Council has a target of 8,925 additional homes for the plan period of 2010-2025 (595 homes per year), including 6,550 additional self-contained homes (437 homes per year). This is based on the London Plan, related regional guidance, and our assessment of the supply of developable housing land. The London Plan gives a London-wide target of 305,000 additional homes from 2007 to 2017, and a Camden target of 5,950 additional dwellings (an annual monitoring target of 595 additional homes), which is consistent with the Council's 15 year target. As an advance indication for housing trajectories covering the period 2017 to 2027, annex 10 to the London Plan gives an annual range for Camden of 480 to 1,030 additional homes. The Government Office for London and the GLA produced a guidance statement in March 2008 which proposes that boroughs should roll forward the target for 2007 to 2017 as an 'indicative figure' prior to the adoption of new targets based on the London Strategic Housing Land Availability Assessment and Housing Capacity Study 2009 (SHLAA). The Council accepts this approach, and considers that an indicative figure of 595 additional homes per year is a reasonable interim assessment for the period 2017-2025.
- 6.9 Our annual figure of 595 additional homes per year (just under 9,000 homes over 15 years) is made up of three elements. These elements are set out in Annex 10 of the London Plan, and based on the 2004 London Housing Capacity Study:
- 437 additional self-contained homes each year (or just over 6,500 over 15 years). This covers flats and houses (in Use Class C3) that have been newly built, converted from another use, or formed from a net increase in homes in an existing building;
 - 100 additional homes per year that are not self-contained (or 1,500 over 15 years). These are homes that share common facilities or services, such as hostels, residential care homes and grouped bedsit rooms;
 - 59 homes per year for returning vacant stock into housing use (just under 900 homes over 15 years). This count is based on homes that have been unused for at least 6 months.
- 6.10 The Council produces and updates a housing trajectory as part of its Annual Monitoring Report (AMR). The housing trajectory shows how we are bringing forward sites to deliver self-contained homes over the next 15 years, and measures Camden's anticipated performance against our monitoring target for additional self-contained homes. The AMR also monitors the number of vacant dwellings returned to use and the net gain in non-self contained homes each year. For the entire plan period from 2010/11 to 2024/25, on the basis of the Annual Monitoring Report 2008/09, delivery of additional homes is expected to total 12,250 or around 815 per year. This is significantly above Camden's target of 8,925 additional homes over the entire 15 year plan period.
- 6.11 The housing trajectory shows how we are planning to meet our target for 6,550 additional self-contained homes over the entire plan period. Our starting point is sites that have already been allocated in the UDP 2006 development plan, and sites that are emerging in the LDF Site Allocations document. For the first five years of the trajectory, the target for additional self-contained homes can be met from an identified supply of deliverable land in the form of allocated sites, emerging sites and other sites where planning permission has already been granted. For the subsequent ten years, the target can be met from an identified supply of developable land in the form of allocated sites and emerging sites.
- 6.12 The final 10 years of the housing trajectory also includes a figure for 'windfall' sites, which are sites that do not yet have planning permission, and have not been individually identified in a development plan document. We do not rely on these windfalls to meet our target for delivery of self-contained homes, but windfall sites will make a significant contribution to our overall housing delivery, and we consider that they should be included in the trajectory to enable proper planning for infrastructure. This contribution from windfall reflects Camden's circumstances as an inner London Borough with a high turnover in the use of land and high proportion of small sites. The numbers included reflect Camden's history over the period since 2003/04 of completed developments on small-sites delivering fewer than 10 additional homes, and ongoing monitoring suggests that this trend is likely to continue.

- 6.13 Over the period 2010-25, we anticipate that student housing will make up most of Camden's supply of homes that are not self-contained. Our 15-year target is 1,500 non-self contained homes. From 2004 to 2008, the Council granted permission for additional accommodation to house over 1,200 students in blocks designated as student housing, most of which were either complete or under construction by mid 2009. Although many of these include studio flats with en suite bathroom and cooking facilities, each block generally has a common management regime, and some common areas for facilities such as recreation and laundry rooms. Student housing is therefore considered against the monitoring target for homes that are not self-contained. We will seek to manage the development of sites for student housing to ensure that it does not prejudice the availability of sites to meet other housing needs, and particularly the supply of self-contained housing.
- 6.14 The London Strategic Housing Land Availability Assessment and Housing Capacity Study (SHLAA) has been prepared by the GLA with the London boroughs. This will provide a new London-wide housing target and new borough targets through a review of the London Plan. The SHLAA was published in October 2009, and proposes an annual monitoring target for Camden of 665 additional homes per year, including 500 self-contained homes. The sites and housing delivery figures that have been identified in Camden's housing trajectory are consistent with the figures proposed by the SHLAA, and indicate sufficient housing sites are available in Camden to meet future London Plan targets based on the SHLAA.
- 6.15 Of the 12,250 homes anticipated in the housing trajectory, we expect just over 60% to be provided in Camden's growth areas, split primarily between King's Cross, Euston, Tottenham Court Road, West Hampstead Interchange, with limited additional provision at Holborn. Please see policy CS1 – *Distribution of growth* and paragraph 1.7 for more details of how new homes will be distributed around the borough and policy CS2 for our approach to growth areas.
- 6.16 There is potential for some housing development as part of the Council's estate regeneration programme, depending on separate consultation with residents of each estate, a number of these may provide additional homes alongside improved homes for existing occupiers. However, most of the remaining housing target is likely to be provided in small developments, widely spread across the borough, each adding fewer than 10 homes – the 15-year housing trajectory anticipates that around 2,600 homes will be provided from this source.
- 6.17 The London Plan housing targets and Camden's trajectory are based on an assessment of the capacity of the borough in terms of sites that are available for housing. However, we expect the demand for additional homes to vastly exceed the anticipated supply. Household projections predict over 1,000 additional households in Camden each year from 2006 to 2026. This compares with a target for additional homes of only 595 per year, and the trajectory's estimated supply of 815 per year. Furthermore, almost 12,000 households in Camden currently live in unsuitable housing, and almost 6,000 will need to move to more suitable homes (Camden Housing Needs Survey Update 2008). Homes are assessed as unsuitable if households suffer from problems such as overcrowding, major disrepair, mobility difficulties and harassment. Homes that are lost through redevelopment or conversions further widen the gap between supply and demand (the London Plan target is monitored on the basis of net additions). In each year from April 2003 to March 2008, permission was granted in Camden for the loss of 80 or more dwellings.



6.18 The Council aims to close the gap between housing demand and supply by minimising the net loss of existing homes, and by regarding housing as the top priority when considering the future of unused and underused land and buildings. We recognise that there are situations where the loss of homes can be justified (such as where two homes are combined to resolve an overcrowding problem), and will take account of the specific circumstances of existing homes and proposed developments. Similarly, we recognise the need for jobs and services and facilities, acknowledge Camden's wider role within London, and respect the value of Camden's built and natural environments. The priority the Council gives to housing will not override, but will be considered alongside:

- the need to protect some non-residential uses, such as industry, warehousing, community uses and shops across the borough;
- the need to promote Central London as a national and international focus of business, shopping, culture, education, healthcare and research; and
- the characteristics of specific areas, sites and properties.

Details of our approach to preventing the loss of existing homes and treating housing as our priority land-use are included in Camden Development Policies (see policies DP2 – *Making full use of Camden's capacity for housing*, and DP1 – *Mixed use development*).



Securing high quality affordable housing

- 6.19 Camden has a particularly large requirement for additional affordable homes. The Camden Housing Needs Survey Update 2008 indicated that an additional 4,800 affordable homes would be needed in the borough every year to provide for existing households (spread over 5 years) and provide for new households coming forward each year. The Survey Update also indicates that of the households in unsuitable homes, over 7,300 are in affordable housing, and the Update estimates that over 4,500 will need to move to more suitable homes. On the basis of all households in housing need and the supply of homes anticipated by the London Plan target, the Survey Update recommends a balance should be achieved by seeking 50% of additional self-contained homes in the form of affordable housing. The Council will therefore apply 50% of the target for additional self-contained homes as a borough-wide target for the proportion of additional homes that should be affordable, which is broadly consistent with the London Plan's strategic target of 50% across London.
- 6.20 The government defines two types of affordable homes, **social rented** housing and **intermediate affordable** housing. Social rented housing includes housing rented from the Council and other registered affordable housing providers such as Housing Associations and Housing Cooperatives. The government sets targets for social rents ensuring that they remain very much lower than market rents. Intermediate affordable housing costs more than social rented housing, but substantially less than market housing. It caters for occupiers who are unable to afford market housing, such as key-workers and first-time buyers. In Camden, most of the intermediate affordable housing developed up to 2009 has been provided by Housing Associations.
- 6.21 The Housing Needs Survey Update found that almost three-quarters of the Camden households needing affordable housing could afford costs that were higher than social rents. In some circumstances, those households would be able to benefit from intermediate affordable housing, however many of these households would be unlikely to choose intermediate housing in Camden. Some Camden households who can afford significantly more than social rents are likely to opt for cheaper market housing outside the borough (although a wider choice of intermediate housing might lead them to stay). Also, Camden households who can only afford to pay slightly more than social rents are unlikely to be able to afford the intermediate housing within the borough, which is relatively expensive due to high house prices and land costs. To balance these concerns, the Council has set guideline percentages for the split of affordable housing at 60% social rented and 40% intermediate affordable housing. We also support a range of different intermediate housing types to make this category more attractive to Camden households, as set out in paragraph 6.33 of this section.
- 6.22 Given the scale of affordable housing need in the borough, the Council will seek the maximum reasonable amount of affordable housing on development sites in accordance with the London Plan. For development proposals, Development Policy DP3 sets out site-specific considerations for assessing whether an affordable housing contribution is appropriate, and what form it should take. The financial viability of the development is a key consideration.
- 6.23 In Camden, a high proportion of homes are developed in small schemes which cannot practically contribute to the supply of affordable housing, and a small proportion are developed in schemes designated wholly as affordable housing (LB Camden Development Monitoring). The Camden Housing Needs Survey Update indicates that the greatest need for additional affordable homes (particularly social rented homes) is for homes with three bedrooms or more, and the greatest need for additional market housing is for homes with two bedrooms (although there is often a market demand for very large homes). Where negotiations for affordable housing take place on the basis of the number of homes to be provided, developers are reluctant to offer large affordable homes. Taking these factors into account, alongside the Camden Affordable Housing Viability Study 2009, the Council will also seek to negotiate an affordable housing contribution from specific development proposals of 50% of the total addition to housing *floor space*, subject to site-specific considerations. Camden Development Policies give more guidance on how the 50% target will apply, and includes a sliding scale from 10% to 50% for the affordable housing percentage in developments with capacity for fewer than 50 dwellings, together with information regarding the 60% and 40% guideline percentages (see policy DP3). Further details of our approach are set out in our Camden Planning Guidance supplementary document.



- 6.24 On the basis of the annual affordable housing need figure taken from the Camden Housing Needs Survey Update, the annual target for 595 additional homes in the London Plan, and the 50% borough-wide affordable housing target, there is a gap of over 4,000 between the number of new affordable homes needed each year and the target for new supply. The loss of existing affordable housing would serve to widen that gap even further. However, Camden currently has a mismatch between the types and sizes of affordable housing that are most in need and the types of affordable housing that become available from the existing stock. The Council will support proposals that help to adjust the affordable housing stock to fit contemporary and future needs, through redevelopment and conversion (either combining homes to resolve overcrowding, or dividing homes to resolve under-occupation). To balance these factors, the Council will seek to minimise the net loss of affordable housing floorspace, but will not necessarily resist the loss of individual affordable homes. Our Development Policies document gives further guidance on the loss of affordable housing (see policy DP4).
- 6.25 The government defines Decent Homes as homes that are warm, weatherproof and have reasonably modern facilities. It aims to ensure that all social rented housing reaches its Decent Homes standard by 2010. The Council has an ongoing programme of works in place to improve its housing stock, and aims to bring the majority of homes up to the Decent Homes standard by 2012.
- 6.26 To transform all Council housing into Decent Homes, we will need to generate significant funds for investment, including £100 million from an estate regeneration programme. Regeneration is a possibility for estates that have a substantial investment need, have development opportunities that could generate investment capital, and have the potential to create more sustainable communities. In many cases proposals are likely to be based on refurbishment, with redevelopment and infill in some cases. Where estates are identified for possible regeneration initiatives, we will apply 'place-shaping' principles, working with residents and communities to develop a vision for the area. The proposals will aim to address local housing needs directly, achieve high standards of sustainability and energy efficiency, and deliver wider social benefits such as helping people get into work and improving health.
- 6.27 The first group of estates identified are:
- Chester – Balmore;
 - Holly Lodge Estate;
 - Alexandra and Ainsworth/Abbey Area; and
 - Maiden Lane Estate.
- Consultation on the first two of these is relatively advanced, and it is likely that firm proposals will be in place by 2010. The Chester – Balmore regeneration is expected to involve redevelopment and a small increase in the number of homes (there are 25 existing homes). The Holly Lodge Estate regeneration is expected to involve refurbishment, replacing un-modernised bedsit rooms (over 70% vacant) with modern self-contained flats, providing for existing residents and also returning 80 additional homes to use. Consultation with residents on regeneration options for the other two identified estates is continuing.
- 6.28 There are several other residential areas with a large number of social rented homes and housing estates, for example, Gospel Oak. Some of these areas are also expected to benefit from estate regeneration over the period of our Core Strategy, subject to consultation with residents and community support for the initiative.

Tackling social polarisation and creating mixed and inclusive communities

- 6.29 One of the objectives of the government's strategic housing policy is to create mixed and inclusive communities. The Council aims to achieve mixed communities by seeking a range of housing types suitable for households and individuals with different needs. The range of housing sought will include:
- homes affordable for individuals and households across a range of incomes;
 - a mix of homes of different sizes to suit single people, couples, small families and large families;
 - homes suitable for people with mobility difficulties;
 - homes for older people;
 - provision for homeless people and vulnerable people;
 - homes for young adults and students in higher education; and
 - sites suitable for gypsies and travellers and travelling showpeople.
- 6.30 The needs of gypsies and travellers and travelling showpeople are considered in detail in policy CS12. The other listed needs are considered below.
- 6.31 It will not be feasible to include a full range of homes wide enough to meet all needs within every development. On individual sites, we will seek a mix that addresses needs identified at the borough-wide level and local needs, taking into account the characteristics and constraints of the site and area. To achieve inclusive communities, when considering the potential of each site, the Council will give priority to the provision of affordable housing and homes for vulnerable people. Paragraphs 6.46 to 6.48 identify the groups of vulnerable people that most commonly need some form of housing support in the borough.

Affordability across a range of incomes

- 6.32 The split between affordable housing and market housing will not necessarily secure housing suitable for households across the full range of incomes. The Camden Housing Needs Survey Update 2008 show a large gap between the cost of owner-occupation and market rents and a further large gap between the cost of market rents and the cost of social rents. These gaps are present for all sizes of home, but are particularly significant for homes with 4-or-more bedrooms. This could lead to middle-income households being excluded from Camden, creating social polarisation between low income households in social rented accommodation and high income households in owner-occupation.



- 6.33 Intermediate affordable housing is intended to bridge the gap between social rented housing and market housing. For intermediate housing to tackle social polarisation effectively, it needs to be attractive to a range of household types across a range of incomes, including those that aspire to own their own home and those that can only afford to rent. We will therefore support a variety of different types of intermediate housing, including rent, shared-ownership and models where occupiers can switch from rent to shared-ownership. Further guidance on how the Council will seek a variety of intermediate housing types is given our Camden Planning Guidance supplementary planning document.
- 6.34 The number of market rented homes in London grew by 25% from 2001 to 2006 (Greater London Strategic Housing Market Assessment 2008). The private rented sector is the largest source of housing for people who are not eligible for social rented housing and cannot afford to buy. Future growth may be constrained by the availability of buy-to-let mortgages and falling property values, but demand in Camden is expected to remain high. The turnover of occupiers of market rented housing tends to be rapid (particularly given its popularity amongst young adults and students), so localised concentrations of private renting can harm the stability of a community. However, private renting is thought to play a significant role in limiting the social polarisation in the borough, and the Council will seek to actively foster the sector and support private tenancies for people in housing need.
- 6.35 There is limited potential for the Council to mitigate the impact of high cost home ownership in the borough, but there are measures that can assist access to cheaper housing:
- we will positively consider proposals to provide low-cost market housing through innovative funding arrangements, designs and methods of construction;
 - we seek a mix of homes of different sizes, which should include small homes as well as large ones;
 - we will resist development densities that are below the appropriate range given in the London Plan density matrix or below the density of the surrounding area, which will help to prevent a focus on very large luxury homes; and
 - the government offers low interest equity loans to help some households into owner occupation.



Homes of Different Sizes

- 6.36 In 2008, we estimate that there were 99,000 dwellings in Camden (Housing Strategy Statistical Appendix 2008). The dwellings are predominantly self-contained flats and houses, meeting the general needs of households of all ages and sizes. Existing homes, especially those rented from the Council, are generally smaller dwellings – over 40% of Council homes have 1-bedroom or are studio flats, and almost 30% of the remaining stock has only 1 or 2 habitable rooms (Investing in Camden's Homes – Executive Report 23-05-07). Camden Housing Needs Survey Update 2008 indicates that overcrowding is the biggest factor making households' existing homes unsuitable, affecting over 5,000 families in the borough (5.9% of all households).
- 6.37 The range of house sizes sought in Camden should reflect the household sizes we expect to live here. Based on the 2001 Census, we estimate that at least 38% of households need homes with 2-bedrooms or more, although one-person households were the most common type (46% of households). GLA population projections predict that the proportion of one-person households will rise to 51% by 2026, although they give limited information on future household composition. The Camden Housing Needs Survey Update 2008 is the main source of data available on the size of homes needed in Camden.
- 6.38 The Housing Needs Survey Update 2008 uses two models to predict future needs for homes of different sizes on the basis of past migration, past household changes, projected trends, existing overcrowding and households' stated intentions. We have taken into account these models, alongside other factors (such as the reluctance of 'downsizing' households to take-up 1-bedroom accommodation and the limited stock of existing affordable housing with 4-or-more bedrooms), to identify dwelling size priorities.
- 6.39 The Council's dwelling size priorities are as follows:
- for social rented housing – homes with 4-bedroom or more are the highest priority, 3-bedroom homes have a high priority, 2-bedroom homes have a medium priority;
 - for intermediate affordable housing – homes with 3-bedrooms or more are a high priority, but homes of all sizes are required;
 - for market housing – homes with 2-bedrooms are the highest priority, homes with 3-bedrooms and 4-bedrooms or more each have a medium priority.

The dwelling size priorities will guide the mix of housing sought across the borough overall, but do not provide a prescriptive basis for determining the mix of homes on individual sites. Details of how the priorities will be used to guide development proposals are set out in Camden Development Policies (see policy DP5).

People with mobility difficulties

- 6.40 Accessibility issues affect most households at some point (for example, illness, injury, age, using pushchairs). Lifetime Homes are dwellings specifically designed to address a wide-range of mobility difficulties without being tailored to the specific circumstances of a household. The Council expects all dwellings developed in the borough to meet Lifetime Homes standards. Guidance on application of the standards is included in Camden Development Policies (see policy DP6) and our Camden Planning Guidance supplementary document.
- 6.41 Many family households will include someone who needs to use a wheelchair in the home, and will require a home that meets more demanding design standards. The Camden Housing Needs Study Update 2008 estimates that 6.4% of Camden's households include one or more people with a physical disability and that 3.4% of Camden's households include one or more frail elderly people. The Council therefore expects that 10% of homes developed in the borough should either be designed to be wheelchair accessible, or easily adaptable for residents who are wheelchair users, in accordance with the London Plan. Guidance on the 10% policy is set out in Camden Development Policies (see policy DP6) and our Camden Planning Guidance supplementary document.



Older people

- 6.42 Camden currently has a stock of just under 1,800 sheltered homes, around half of which are Council owned. The Council also has slightly fewer than 200 places in residential care homes, and supports care for over 400 other people, split between residential and nursing homes. Approximately half of all care places are outside the borough. People of pensionable age represented around 12.5% of Camden's population in 2001. The number of elderly people is expected to increase up to 2026, although the proportion is only expected to increase marginally.
- 6.43 The Council's strategy for serving older people is aimed at enhancing the support available for people to remain in their own homes or to live as independently as possible in sheltered housing and care homes. We do not anticipate that more people will need to move into sheltered or care homes, but we do anticipate a need to change the character of care homes in the borough. New provision will seek to combine independent living and care on the same sites where possible. Some provision is expected to come from new developments and some from the redevelopment of existing homes for older people. We also expect some care homes to be decommissioned. More details of the changes that the Council expects to take place are set out in Camden Development Policies (see policy DP7). Core Strategy Appendix 1 – *Key infrastructure programmes and projects* sets out the new and improved adult care facilities that will be delivered in Camden within the plan period (see items 21-24).

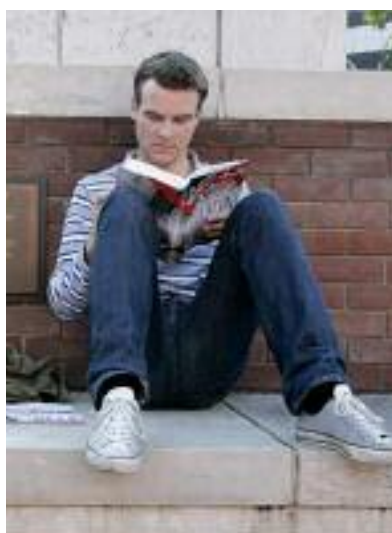
Homeless people and vulnerable people

- 6.44 The Council works to prevent homelessness, guide households into more settled accommodation, and operates a 'pathway' approach that gradually prepares single homeless people for independent living. Since 2005, this work has achieved a reduction of over 50% in the number of homeless households in temporary accommodation.
- 6.45 We anticipate a continued reduction in the need for temporary accommodation, accompanied by a need for fewer hostel places, and a change in the type of places and support that are needed.

- 6.46 The Council provides care for people with serious mental illnesses in partnership with the Camden and Islington Foundation Trust. In mid-2008, around 2,000 people were receiving support, including around 350 in residential or nursing care, or supported housing. During the period of the Core Strategy, we anticipate an increase of around 10% in the number of people with serious mental illnesses, the need remodel some existing residential accommodation to provide intensive supported housing, and the need to provide some additional intensive support places.
- 6.47 In 2007, the Council supported approximately 100 individual tenancies for people with learning disabilities, although some are in clusters and group living accommodation. We anticipate that most future needs for people with learning disabilities will be met by commissioning support rather than providing designated accommodation. However, during the period of the Core Strategy, there is likely a need for remodel or replace some accommodation and to provide cluster flats with high intensity support for people with complex physical and learning disabilities.
- 6.48 Other groups of vulnerable people who commonly need housing support in Camden include looked-after children/young people leaving care; people at risk of domestic violence; people with alcohol or drug dependencies; and ex-offenders. More details of the Council's approach to providing housing support for vulnerable people are set out in Camden Development Policies (see policy DP8).

Young adults and students in higher education

- 6.49 The young adult age group (16-24 year olds) represented around 14% of Camden's population at the 2001 Census, with almost half (8% of the population) being full-time students aged 19 and over. From 2006 to 2026, this age group is projected to grow much more slowly than the total population, to give an overall reduction in the proportion of young adults.
- 6.50 In 2001 over 15,000 full-time students aged 19 and over were normally resident in Camden during term-time. Many more living outside the borough were registered at higher education institutions with a Camden base. The Camden Housing Needs Survey Update 2008 indicated that almost 28,000 full-time students were registered in Camden based institutions in 2006/07, and continued growth is expected.
- 6.51 The Camden Housing Needs Survey Update 2008 indicates that flats and houses in the private rented sector accommodate over 26,000 Camden households. On the basis of the Camden Private Sector House Conditions Survey 2004, we estimate that almost 9,000 of these households either shared a house or flat, or rented a bedsit room in subdivided premises. Almost 4,000 additional households rented private accommodation in hostels, homes that take lodgers, B&Bs and care homes. The 2001 Census showed that the private rented sector housed a third of Camden's full-time students resident in term time. We consider that the private rented sector is the largest source of housing for young adults with a limited income.



- 6.52 Provided that the existing stock of cheap housing such as bedsit rooms can be protected, we anticipate that the private rented sector will be able to support the modest projected increase in young adults. However, it is apparent that the growth of student numbers could place severe strain on the stock of private rented housing. The Council acknowledges that purpose-built student housing has potential to mitigate pressure on the stock of private rented homes in Camden. Therefore, the Council anticipates that most of the figure for non self-contained homes (1,500 homes from 2010/15 to 2024/25) will be met by developments involving designated student accommodation – although many of these may include studio flats with en suite bathroom and cooking facilities, see paragraph 6.13 of this section.
- 6.53 Although the housing trajectory indicates that there is sufficient housing land to enable Camden to exceed the target for self-contained housing, there is a high demand for student housing and for development sites. We are concerned that provision of student housing and other housing with bedsit rooms and shared facilities could prejudice the availability of sites to meet other housing needs, and particularly the supply of self-contained housing. Therefore, we will seek to manage the development of sites for these forms of housing with shared facilities to ensure that they do not prevent us from meeting other housing needs. When considering the appropriateness of particular proposals for student housing, bedsit rooms, or other housing with shared facilities, the Council will consider:
- the supply of self-contained housing, and whether this is falling short of the Council's target of 437 additional dwellings per year;
 - the effect of the proposal on the supply of land for self-contained housing;
 - whether the site is particularly suitable for affordable housing, housing for older people or housing for vulnerable people (more details of the protection of sites particularly suitable for these groups are set out in Camden Development Policies – see policy DP2); and
 - whether the proposal contributes to creating a mixed and inclusive community.

The Council's approach to student housing, bedsit rooms, and other housing with shared facilities is set out in detail in Camden Development Policies (see policy DP9).

Flexible implementation

- 6.54 London house prices peaked in January 2008, and Camden house prices peaked in May 2008 (Land Registry 2009 data). Between the start of 2008 and mid-2009, there was a reduction in the availability of credit available to land purchasers, developers and home buyers. This has caused large reductions in house prices, transactions, new mortgages, and the number of new developments starting on-site. These changes raise uncertainty over whether the rates of housing and affordable housing delivery achieved up to 2008 can be continued in the future.
- 6.55 There are other uncertainties that arise from these credit conditions. New mortgages for shared ownership and buy-to-let have been particularly affected, which potentially damages delivery of intermediate housing and market rented housing. In contrast, buyers of premium properties have continued to have access to capital, which has pushed market interest towards a small number of very large homes. These changes raise uncertainty about the ability to deliver a range of homes of different sizes that are available across a range of incomes.
- 6.56 Camden's 15-year housing trajectory suggests that the supply of housing will not fall short of the annual target of 595 additional homes (including 437 additional self-contained dwellings) unless completion rates drop significantly below expectations. Nevertheless, given current credit limitations and falling prices in 2009, there is a need to monitor the supply of housing very closely.



- 6.57 If overall housing supply appears to be threatened by economic conditions, there are a number of areas of flexibility in the Council's approach that will enable us to tailor our objectives to the particular circumstances of each proposal with a view to maximising delivery. These include:
- varying the proportion of market and affordable housing;
 - varying the split between social rented housing and intermediate affordable housing;
 - positively considering different forms of intermediate affordable housing to take advantage of the funding and credit that is available;
 - varying the range of home sizes sought, particularly amongst market housing; and
 - reviewing the range of S106 requirements sought to maintain viability.

In negotiating the range of housing types and sizes on individual sites, including the proportion and range of affordable housing, the Council will have regard to the characteristics and constraints of the site and the area, progress towards meeting Camden's housing supply target, the financial viability of the development, the contribution the development makes to the creation of mixed communities, and the Council's other planning objectives.

- 6.58 In seeking to secure the future supply of additional housing, we will seek to work in partnership with many other organisations and agencies involved in the development and funding of housing and affordable housing. These will include our Local Strategic Partners, developers, landowners and private landlords, Housing Associations and other affordable housing providers, the Homes and Communities Agency, government departments and other government agencies, the Mayor/GLA and other local authorities – particularly councils in Central and North London.

Key evidence and references

- Camden Together – Camden's Sustainable Community Strategy; 2007 – 2012
- Camden Private Sector House Condition Survey 2004
- Camden Housing Strategy 2005-2010 (updated 2007)
- Camden Housing Needs Study Update 2008
- Greater London Strategic Housing Market Assessment 2008
- Camden Affordable Housing Viability Study 2009
- Camden Annual Monitoring Report 2007/08
- GLA Round 2006 Demographic Projections
- The London Plan (consolidated with Alterations since 2004); Mayor of London; 2008
- Planning Policy Statement (PPS) 3 – Housing

CS11. Promoting sustainable and efficient travel

- 11.1 Camden benefits from excellent transport provision, including a direct link to continental Europe through St Pancras International; national rail services at King's Cross, St Pancras and Euston; 23 tube stations within the borough or on its boundary, 55 bus routes and 27 night bus routes. These provide excellent accessibility within Camden, to the rest of London and beyond. However, the borough also faces considerable challenges in relation to transport. Its road and public transport networks are subject to significant congestion, and air quality is a serious issue.
- 11.2 The Council needs to address these challenges and ensure that transport provision contributes towards our approach to managing the significant growth in the borough, as set out in Section 1. Policy CS11 promotes a range of sustainable transport measures and the delivery of additional infrastructure to support growth and relieve existing pressures on the transport system. It builds on, and helps to deliver, the sustainable transport priorities established in the Council's Green Transport Strategy. This aims to encourage more walking and cycling and reduce traffic in the borough by 15% from 2001 levels.



CS POLICY

CS11 – Promoting sustainable and efficient travel

The Council will promote the delivery of transport infrastructure and the availability of sustainable transport choices in order to support Camden's growth, reduce the environmental impact of travel, and relieve pressure on the borough's transport network.

Improving strategic transport infrastructure to support growth

The Council will promote key transport infrastructure proposals to support Camden's growth, in particular:

- a) King's Cross station improvements;
- b) the redevelopment of Euston Station and the provision of an improved public transport interchange;
- c) Crossrail services and associated station improvements at Tottenham Court Road;
- d) improved interchange at West Hampstead;
- e) improvements to facilities at Camden's London Underground and Overground stations, including at Camden Town and Holborn; and
- f) improvements to encourage walking and cycling as part of transport infrastructure works.

The Council will protect existing and proposed transport infrastructure (including routes for walking, cycling and public transport, interchange points, depots and storage facilities) against removal or severance.

Promoting sustainable travel

In order to support Camden's growth and to promote walking, cycling and public transport, the Council will:

- g) improve public spaces and pedestrian links across the borough, including by focusing public realm investment in Camden's town centres and the Central London area, and extending the 'Legible London' scheme;

- h) continue to improve facilities for cyclists, including increasing the availability of cycle parking, helping to deliver the London Cycle Hire Scheme, and enhancing cycle links; and
- i) work with Transport for London to improve the bus network and deliver related infrastructure, and support proposals to improve services and capacity on the tube, London Overground and Thameslink.

Making private transport more sustainable

As part of its approach to minimising congestion and addressing the environmental impacts of travel, the Council will:

- j) expand the availability of car clubs and pool cars as an alternative to the private car;
- k) minimise provision for private parking in new developments, in particular through:
 - car free developments in the borough's most accessible locations and
 - car capped developments;
- l) restrict new public parking and promote the re-use of existing car parks, where appropriate;
- m) promote the use of low emission vehicles, including through the provision of electric charging points; and
- n) ensure that growth and development has regard to Camden's road hierarchy and does not cause harm to the management of the road network.

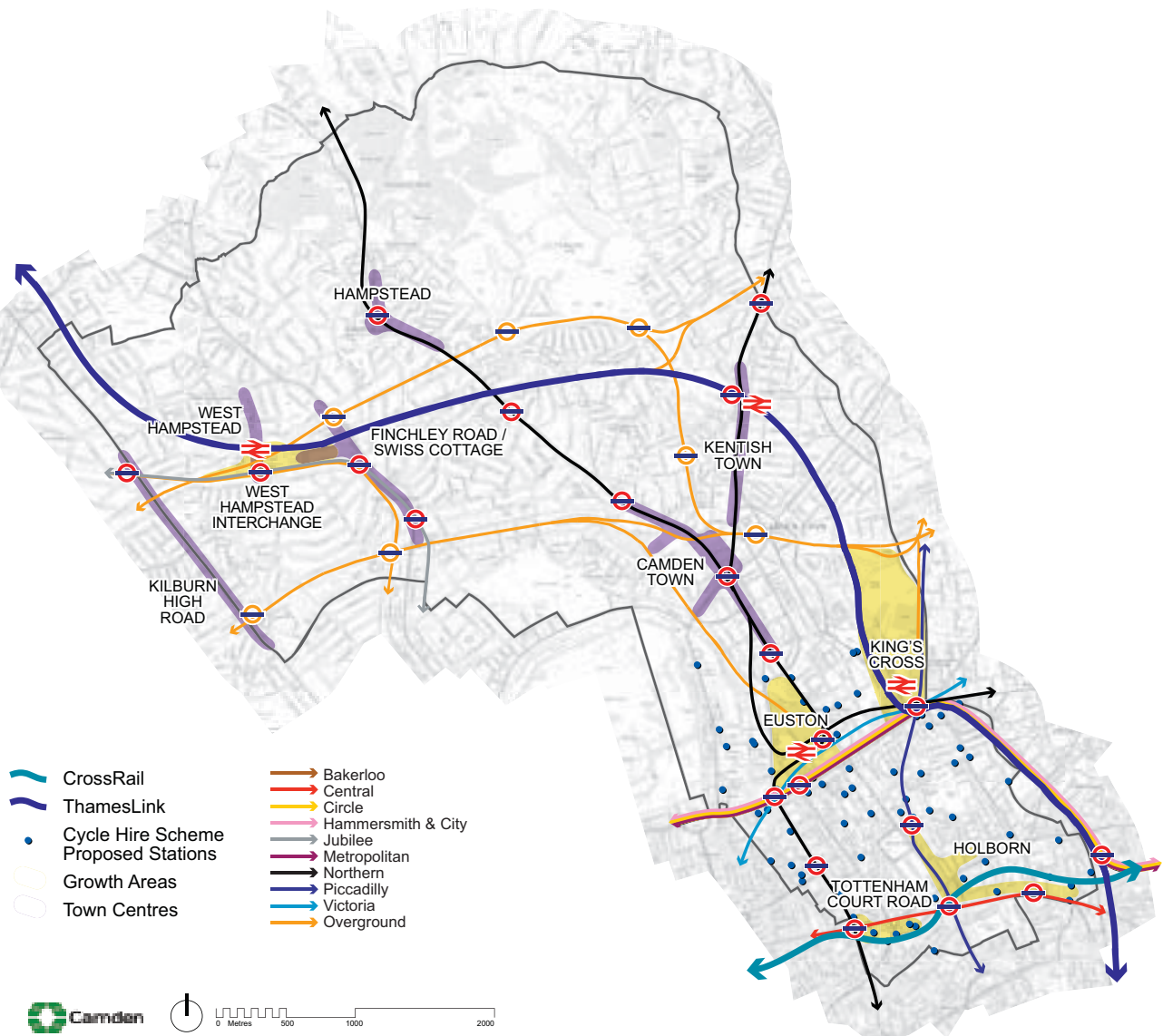
Promoting the sustainable movement of freight

The Council will seek to reduce freight movement by road; encourage the movement of goods by canal, rail and bicycle; and minimise the impact of freight movement on local amenity, traffic and the environment.

Improving strategic transport infrastructure to support growth

- 11.3 The strategic transport infrastructure projects identified in policy CS11 will play a central role in supporting future growth in the borough, with the development concentrated in locations that are, or will be, subject to significant improvements to transport facilities, services and capacity. The key infrastructure programmes and projects identified in Appendix 1 set out further details regarding these schemes, including delivery timescales and responsibilities, and sources of funding (items 39-50). Map 3 shows Camden's key existing and proposed transport infrastructure.

Map 3: Transport



This map is based on Ordnance Survey Material with the permission of Ordnance Survey on behalf of the Controller of Her Majesty's Stationery Office ©. Unauthorised reproduction infringes Crown copyright and may lead to prosecution or civil proceedings. Licence number LA100019726, year 2010.



11.4 All of Camden's growth areas (see policies CS1 and CS2) will be subject to significant improvements in strategic transport infrastructure:

- King's Cross will benefit from improved station facilities, significant tube capacity increases and improved service capacity and frequency on the Thameslink line;
- Euston will also benefit from an improved station and associated facilities and significant tube capacity increases. The Council will seek to deliver enhanced walking and cycling links to surrounding areas from both Euston and King's Cross;
- Tottenham Court Road Station is due to be served by Crossrail by 2018 and there will be a new Crossrail station linked to Tottenham Court Road underground station. The Underground station will also benefit from substantial improvements and from additional tube capacity through planned Northern Line upgrades. The Council will work with its partners to ensure that walking links are improved around the station in order to accommodate the expected increase in pedestrian activity in the area;
- Holborn will benefit from increased tube capacity through the Piccadilly Line upgrade and, over the longer term, the Council will pursue opportunities to deliver substantial improvements to Holborn Underground station, although funding for such works has not yet been identified. The provision of a Crossrail interchange at Farringdon, located adjacent to the borough boundary in Islington, will provide additional capacity to the south east of the borough. This and measures at Tottenham Court Road may help to alleviate current pressure on Holborn station. Improvements to pedestrian signage through the 'Legible London' scheme should also make it easier for pedestrians to find their way around the area; and
- West Hampstead will benefit from improved service capacity at its Jubilee Line and London Overground stations, as well as increased service frequency and capacity at its Thameslink station. In addition, the Council and Transport for London are currently investigating a range of measures to improve pedestrian linkages in the interchange area between West Hampstead's three stations, including addressing the need to widen pavements, and remodelling station entrances.

11.5 All of Camden's town centres are served by at least one tube or Overground station, each of which will benefit from planned improvements to service capacity and, in some cases, increased service frequency (see Appendix 1 – items 43 and 44). Planned Northern Line capacity improvements have the potential to help to relieve current peak time congestion at Camden Town station. Neighbouring tube stations at Chalk Farm and Mornington Crescent will also benefit from Northern Line capacity improvements, which should also help to relieve pressure at Camden Town station. Although funding is not currently identified for the planned redevelopment of Camden Town Underground station, the Council has published a planning brief for the site and will pursue opportunities to deliver a better functioning, more accessible station that relieves congestion issues. Camden Road overground station will also benefit from planned capacity and service improvements on the North London Line.

11.6 The Council considers that the scale of transport improvements focussed on Camden's main growth areas means that, in the event that any individual scheme is postponed or cancelled, sufficient transport infrastructure will be provided and other measures secured to support the levels of growth envisaged. For example, the range of planned tube, London Overground and rail

capacity improvements means that, if any single scheme did not occur, there will still be increased capacity on other lines. Also, walking, cycling and bus links will continue to be improved, and where appropriate, enhanced to meet reductions in planned capacity elsewhere.

- 11.7 Given the constraints on transport capacity in a densely developed area like Camden, almost every part of the existing transport infrastructure is a valuable asset. The Council will therefore seek to protect all existing and proposed facilities and links (including for Crossrail 2, also known as the Chelsea – Hackney Line), and safeguard the potential for improvements to the transport network. The Mayor of London's *Land for Transport Functions* supplementary guidance sets out further information on protecting land for transport.

Promoting sustainable travel options

- 11.8 The Council will complement the provision of strategic transport infrastructure by working to improve local level sustainable transport measures. Camden's Local Implementation Plan (LIP) sets out how we intend to deliver more sustainable transport, and is a key mechanism for the implementation of the transport objectives set out in this Core Strategy, including applying for the necessary project funding from Transport for London.

Walking

- 11.9 Walking is a 'zero carbon' form of travel that relieves pressure on infrastructure, both in terms of public transport infrastructure and Camden's roads. As such, the promotion of walking is an essential element of our approach to managing Camden's growth. It also provides significant wider social benefits in terms of promoting more active, healthy lifestyles (see policy CS16 *Improving Camden's health and well-being*), and helping to create more active vibrant streets and public spaces. Camden's Community Strategy seeks to improve conditions for pedestrians, and Camden's Walking Plan seeks to promote walking in the borough and to improve the street environment.
- 11.10 Policy CS14 – *Promoting high quality places and preserving our heritage* sets out the Council's approach providing attractive streets and spaces. Camden's Local Implementation Plan sets out key planned projects that will enhance our streets and spaces and provides a particular focus on the delivery of improvements in Camden's town centres and Central London. This reflects the higher level of activity in these areas, and the need to relieve current pressure on the public transport system by enhancing links between visitor generators and transport hubs. It also supports Camden's approach to future development by focusing improvements on locations that include the borough's growth areas. The Council will work with British Waterways, Natural England, other land owners/developers and users to improve the Regent's Canal and its towpath, which forms a main east-west pedestrian and cycle route through the borough (see Map 1 and policy CS15).
- 11.11 Improved pedestrian signage to help people find their way is also an important factor in encouraging more people to walk for shorter journeys, rather than using the car, tube or bus. Camden's Local Implementation Plan sets out how the Council will make it easier for people to find their way around through the 'Legible London' scheme, which provides new, simple signage for pedestrians. The Council is currently working with Transport for London and other partners, including neighbouring boroughs, to expand the initiative across the Central London Area. We will seek to extend the scheme throughout the borough – prioritising key destinations and localised centres where there is a concentration of amenities and a high level of pedestrian activity, including our town centres. New signage in these areas will be expected to reflect Legible London standards.
- 11.12 Public realm improvements will primarily be delivered by the Council using funds from Transport for London, to be sought through Camden's Local Implementation Plan. The Council's own funding and, where appropriate, developer contributions and will also be used to finance projects to promote walking. The Council will continue to work with Transport for London and neighbouring London boroughs to deliver improved pedestrian accessibility across borough boundaries. Camden is a member of the cross-borough Clear Zone Partnership, a key mechanism for delivering improvements to walking routes across Central London, linking King's Cross and Euston with Bloomsbury and Holborn, through to the River Thames and the West End (see policy DP32 in Camden Development Policies).

Cycling

- 11.13 As with walking, cycling is a sustainable means of travel that provides the opportunity to relieve congestion as well as promoting healthy, active lifestyles. Camden's Cycling Plan (Fourth Review 2008) seeks to promote increased cycling in the borough by improving cycling facilities and routes. We will:
- ensure that all opportunities are taken to maximise the availability of new cycle parking across the borough both in new developments and more widely in any areas where there is need for increased provision, such as at town and local centres. This will principally be delivered through Camden's Parking Standards for new developments (see policy DP18 in Camden Development Policies) and as part of town centre improvement projects;
 - provide 'cycle stations' in appropriate locations across the borough. These are cycle parking facilities available to the public, usually in a secure area with restricted access. Appropriate locations would include town centres, Central London and major transport interchanges. Such stations have already been secured as part of approved schemes at King's Cross (1,000 bicycle spaces) and Regent's Place/Euston Tower (around 70 spaces).
 - improve cycle links across the borough to encourage more cycling. We will seek to ensure that developments contribute to and, where appropriate, provide appropriate links with strategic cycle routes, including the London Cycle Network (a network of radial and orbital routes for cyclists throughout London); and
 - work with Transport for London and other partners, including neighbouring boroughs, to implement the London Cycle Hire Scheme. The scheme was introduced by the Transport for London Business Plan 2009/10-2017/18, and aims to provide places, firstly in Central London, then across the capital, where people can pick up and drop off bicycles. We will seek to ensure that the scheme is extended to key destinations across the borough, including our town centres.

Public transport

- 11.14 Camden will benefit from planned improvements to London Underground, London Overground and Thameslink service capacity, as well as the delivery of Crossrail. Between 2009 and 2020, Transport for London plans to significantly improve capacity on the Jubilee; Victoria; Northern; Piccadilly; and District, Hammersmith and City lines, as well as the London Overground North London Line, all of which pass through the borough. Also, the Thameslink train line serving St Pancras International is planned to benefit from significantly improved capacity and service frequency by 2015. Crossrail will provide a major new east-west train link through London, and help to support growth in the capital by tackling congestion and the lack of capacity on the existing rail network. The Mayor has introduced a policy in the London Plan and prepared Supplementary Planning Guidance - Use of planning obligations in the funding of Crossrail, to seek financial contributions from new developments towards the delivery of Crossrail, which is due to be completed by 2017. Please see Appendix 1 for further details on planned public transport infrastructure improvements (items 39-44).
- 11.15 In partnership with Transport for London, which manages the bus network across London, the Council will seek to ensure that Camden's growth is matched by improvements in bus services, where required. This will include provision of new bus facilities (for example, bus stops) where appropriate. Policies DP16 and DP17 in our Camden Development Policies Local Development Framework document set out the Council's expectations for new development in relation to transport capacity and public transport contributions.

Travel Awareness

- 11.16 The Council also works to encourage more sustainable travel in schools, businesses and communities through its travel awareness programme. We also work with schools and businesses to produce Travel Plans, which provide a package of measures to encourage safe, healthy and sustainable travel options, including through reducing the need to travel and unnecessary car journeys, and promoting active means of transport such as walking and cycling. Camden is part of the North Central Travel Plan Network, a group of north and central London boroughs (supported by Transport for London) that offers advice to businesses to help them to develop travel plans.

Making private transport more sustainable

- 11.17 The Council will continue to limit the amount of parking available for private cars. This represents a key part of our approach to addressing congestion, promoting sustainable transport choices, and facilitating the delivery of pedestrian and cycle improvements by maximising the amount of public space available to provide new walking and cycling facilities. Our approach to car parking will seek car-free development in the most accessible parts of the borough (Central London, town centres (except Hampstead) and other areas that are well-served by public transport). We will also seek car-capped developments where the provision of additional on-street parking would be harmful to parking conditions. Please see policies DP18 and DP19 in Camden's Development Policies for more on our approach.
- 11.18 For journeys where more sustainable travel options are not practical, car clubs and car pools offer an alternative to privately owned cars. Car clubs are hire schemes that allow households to avoid the costs of car ownership, deter them from using cars for a trip which is convenient without one, and reduce the amount of car parking space needed. For business journeys, car pools have many similar advantages, and can remove the need for business-users to commute by car. The Council will seek to expand the availability of car clubs and car pools by encouraging provision for them as part of proposals involving additional parking (see policy DP18 in Camden Development Policies), as well as working with operators to secure more car club spaces on Camden's roads where demand is identified.
- 11.19 Another part of the Council's strategy to promote more sustainable travel options is to allow the loss of existing public car parks, where appropriate. This helps to promote the use of sustainable transport by limiting the availability of parking spaces, and also promotes more efficient use of land in the borough. For further details, please see policy DP19 in Camden Development Policies.
- 11.20 We will also encourage low emission vehicles by increasing the availability of electric charging points across the borough. Although still contributing to congestion, these vehicles do not have the air quality impacts of ordinary cars. Where provision for the use of private cars in new developments is unavoidable, the Council will therefore seek provisions such as electric charging points (see policy DP18 in Camden Development Policies).
- 11.21 The demand for movement, deliveries and car parking on Camden's roads already exceeds the space available, meaning that effective management of Camden's road network is essential. The Council will seek to ensure that new development does not cause harm to Camden's road hierarchy, or to the ability of Council (and for strategic roads, Transport for London) to manage the road network. Policy DP21 in Camden Development Policies sets out our requirements regarding connections to the road network from developments.



- 11.22 A number of Camden's centres, in particular Camden Town and Swiss Cottage, suffer from a poor pedestrian environment due to gyratory systems that hinder movement and create a poor quality public realm. This has a negative impact on local amenity and the quality of life in these centres. While the Council acknowledges that these roads are important to maintaining smooth traffic flow through London, it will work with Transport for London to investigate long-term opportunities to remove or significantly alter these gyratories for the benefit of these centres and the people that use them.

Promoting the sustainable movement of goods

- 11.23 The movement of goods can have a significant impact on the environment, in terms of noise and disturbance, and air pollution. These impacts are particularly severe in an urban, densely populated borough, such as Camden. The Council will therefore seek to minimise the movement of goods and materials by road by:
- promoting alternative forms of freight movement that have lower environmental impacts, such as the use of Regent's Canal, rail freight and the use of cycle-freight as an extension to cycle courier services; and
 - seeking to deliver more efficient goods movement. We will work with our partners to explore the potential for a freight consolidation facility to serve Camden's Central London Area. These facilities are transfer and distribution centres that consolidate loads from a number of vehicles into single loads for delivery to a specific destination or area.
- 11.24 We will work with our partners, including Transport for London, developers, freight operators and businesses to assess how these aims could be achieved, including for the servicing of new developments both during construction and when in use. Camden is part of the Freight Quality Partnership for Central London, which brings together retailers, freight operators, Central London boroughs, and Transport for London to consider ways to achieve more efficient and sustainable movement of freight.
- 11.25 The Council will also seek to ensure that the impact of construction traffic and the servicing of future developments are kept to a minimum. Policy DP20 in Camden Development Policies sets out how we will seek to minimise the impact of freight movement from development. We are working with Transport for London to investigate opportunities to provide charging points for low emission goods vehicles, which can have a lower impact than normal vehicles in terms of both air pollution and noise.

Key evidence and references

- Camden Local Implementation Plan (LIP) 2005/06-2010/11
- Camden Green Transport Strategy 2008-2012
- Camden Walking Plan Second Edition 2006
- Camden Cycling Plan: fourth annual review 2008
- Camden Interim Parking and Enforcement Plan 2005/11
- Camden Road Network Management Plan (2006)
- Camden Streetscape Design Manual 2005
- Camden Sustainability Task Force Report on Transport
- The London Plan (consolidated with Alterations since 2004); Mayor of London; 2008
- Transport for London Business Plan 2009/10-2017/18
- Land for Transport Functions Supplementary Planning Guidance; Mayor of London; 2007
- Planning Policy Guidance (PPG) 13: Transport; ODPM; 2001
- Camden Together – Camden's Sustainable Community Strategy 2007-2012



Section 3

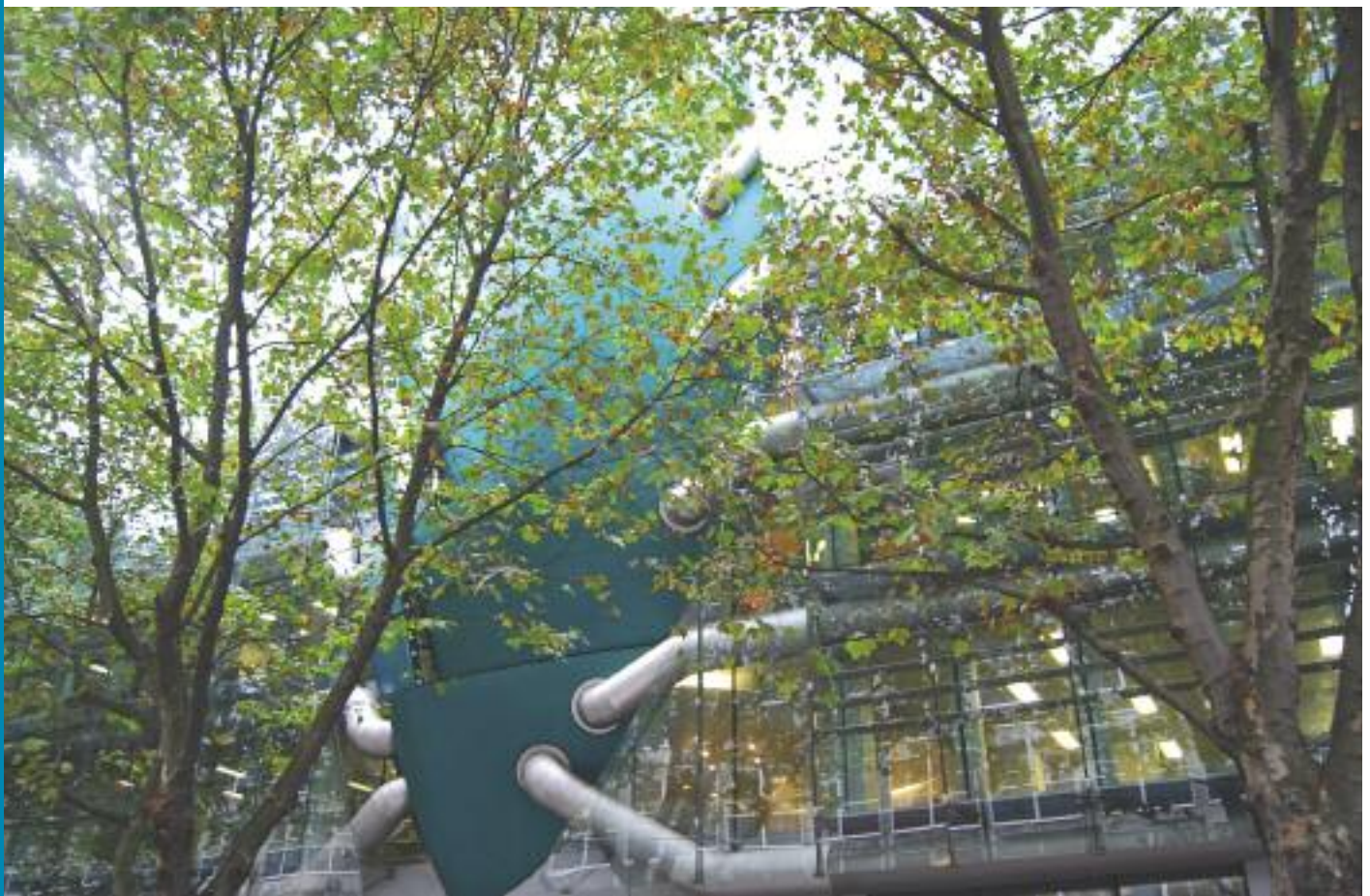
A sustainable and attractive Camden – Tackling climate change and improving and protecting Camden's environment and quality of life

- 13.1 The Core Strategy sets out the Council's approach to managing Camden's growth so that it is sustainable, meets our needs for homes, jobs and services, and protects and enhances quality of life and the borough's many valued and high quality places. This section focuses on delivering the key elements of our strategy relating to:
- making Camden more sustainable and tackling climate change, in particular improving the environmental performance of buildings, providing decentralised energy and heating networks, and reducing and managing our water use;
 - promoting a more attractive local environment through securing high quality places, conserving our heritage, providing parks and open spaces, and encouraging biodiversity;
 - improving health and well-being;
 - making Camden a safer place while retaining its vibrancy; and
 - dealing with our waste and increasing recycling.
- 13.2 The implications of our actions on the environment are increasingly clear and action is needed at global, national and local levels. The Core Strategy has an important role in reducing Camden's environmental impact and achieving sustainable development – meeting our social, environmental and economic needs in ways that protect the environment and do not harm our ability to meet our needs in the future. *A Sustainable Camden that adapts to a growing population* is one of the elements in the vision in Camden's Community Strategy.



CS13. Tackling climate change through promoting higher environmental standards

- 13.3 Camden's Community Strategy commits the Council and our partners to reduce Camden's carbon dioxide emissions in line with the national target of 80% by 2050. To help deliver this, the Council commissioned a study to investigate how we can best cut our carbon dioxide emissions. *Delivering a Low Carbon Camden* (SEA-Renue) found that 30% of Camden's current emissions come from domestic buildings, 58% from non-domestic buildings and 12% from transport. Growth in the borough is expected to increase emissions if they are allowed to grow unconstrained, with emissions from transport expected to see the greatest growth. However, the study found that a 60% reduction can be met through technological means in a financially viable way, with local, decentralised heating systems served by combined heat and power (CHP) being the most cost-effective way for Camden to reduce carbon use. Achieving the 80% target will rely either on alternative technologies and fuels becoming available or on significant behavioural change to reduce energy demand.
- 13.4 Although climate change is not specific to Camden, the borough's highly built-up, inner urban environment means that we face specific environmental issues such as poor air quality and surface water flooding. The measures we can take to minimise the impacts of climate change and adapt to its effects need to consider and be appropriate to the borough's dense and historic character and sensitive environments. Where demonstrated, the Council will have regard to the costs and feasibility of measures to tackle climate change within developments. We will also take into account the cumulative costs of not responding to the need to mitigate and adapt to climate change as well as the long term cost savings such as in energy and water bills to the future occupiers. Measures to tackle climate change are integral in the development process and are a priority of the Council. They should not be seen as 'add-ons'.
- 13.5 The Council can influence environmental performance in the borough through its role in land use and transport planning and also through its own actions and community leadership. *Towards a Sustainable Camden – Camden's Environmental Sustainability Delivery Plan 2008-2012* sets out how we will reduce carbon emissions and improve the environmental performance of activities across the borough to meet national and local targets.



CS POLICY

CS13 – Tackling climate change through promoting higher environmental standards

Reducing the effects of and adapting to climate change

The Council will require all development to take measures to minimise the effects of, and adapt to, climate change and encourage all development to meet the highest feasible environmental standards that are financially viable during construction and occupation by:

- a) ensuring patterns of land use that minimise the need to travel by car and help support local energy networks;
- b) promoting the efficient use of land and buildings;
- c) minimising carbon emissions from the redevelopment, construction and occupation of buildings by implementing, in order, all of the elements of the following energy hierarchy:
 1. ensuring developments use less energy,
 2. making use of energy from efficient sources, such as the King's Cross, Gower Street, Bloomsbury and proposed Euston Road decentralised energy networks;
 3. generating renewable energy on-site; and
- d) ensuring buildings and spaces are designed to cope with, and minimise the effects of, climate change.

The Council will have regard to the cost of installing measures to tackle climate change as well as the cumulative future costs of delaying reductions in carbon dioxide emissions

Local energy generation

The Council will promote local energy generation and networks by:

- e) working with our partners and developers to implement local energy networks in the parts of Camden most likely to support them, i.e. in the vicinity of:
 - housing estates with community heating or the potential for community heating and other uses with large heating loads;
 - the growth areas of King's Cross;

Euston; Tottenham Court Road; West Hampstead Interchange and Holborn;

- schools to be redeveloped as part of Building Schools for the Future programme;
- existing or approved combined heat and power/local energy networks (see Map 4);

and other locations where land ownership would facilitate their implementation.

- f) protecting existing local energy networks where possible (e.g. at Gower Street and Bloomsbury) and safeguarding potential network routes (e.g. Euston Road);

Water and surface water flooding

We will make Camden a water efficient borough and minimise the potential for surface water flooding by:

- g) protecting our existing drinking water and foul water infrastructure, including Barrow Hill Reservoir, Hampstead Heath Reservoir, Highgate Reservoir and Kidderpore Reservoir;
- h) making sure development incorporates efficient water and foul water infrastructure;
- i) requiring development to avoid harm to the water environment, water quality or drainage systems and prevents or mitigates local surface water and downstream flooding, especially in areas up-hill from, and in, areas known to be at risk from surface water flooding such as South and West Hampstead, Gospel Oak and King's Cross (see Map 5).

Camden's carbon reduction measures

The Council will take a lead in tackling climate change by:

- j) taking measures to reduce its own carbon emissions;
- k) trialling new energy efficient technologies, where feasible; and
- l) raising awareness on mitigation and adaptation measures.

Reducing the effects of, and adapting to, climate change

Sustainable patterns of development

- 13.6 The location of development and mix of land uses have a significant influence on the amount of energy we use for transport, as well as whether we can generate or supply local energy efficiently. We will make the most efficient use of Camden's limited land and steer growth and uses that will generate a large number of journeys to the most accessible parts of the borough. We will also encourage an appropriate mix of uses to support sustainable modes of travel such as walking and cycling as well as local energy networks. Development will be focussed in Camden's growth areas, with other highly accessible locations, such as central London and most of our town centres, also considered suitable for development that significantly increases travel demand (please see policy CS1 – *Distribution of growth* and the Key Diagram – Map 1).

Efficient use of land and buildings

- 13.7 The efficient use of land and buildings will reduce pressure to develop undeveloped, 'greenfield' sites. Camden's historic and built up nature means most of our greenfield sites are designated open spaces. The Council will encourage higher densities in line with policy CS1 – *Distribution of growth*. To enable buildings to last longer it is important that they are designed and built to a high standard and to accommodate the changing requirements of occupants over time. Buildings can be designed to be adaptable in the future if consideration is given to:
- the design of the structure, to enable expansion;
 - the layout of the internal space;
 - mechanical services, to allow for expansion or changing expectations and technologies; and
 - enabling 'retro-fitting', for example for renewable energy generation.

Energy hierarchy

Ensuring developments use less energy

- 13.8 A building's use, design, choice of materials and other measures can minimise its energy needs during both construction and occupation. The Council will encourage all developments to meet the highest feasible environmental standards taking into account the mix of uses, the possibility of re-using buildings and materials and the size and location of the development. In addition to design and materials, a building's internal heating and cooling design, lighting and source of energy can further reduce energy use. Policy DP22 – *Promoting sustainable design and construction* in Camden Development Policies provides further guidance on what measures can be implemented to achieve an environmentally sustainable building. The Building Research Establishment's Environmental Assessment Method (BREEAM) and the Code for Sustainable Homes provide helpful assessment tools for general sustainability. Further details on these assessment tools can be found in Development Policy DP22 and our Camden Planning Guidance supplementary document.
- 13.9 Camden's existing dense built form with many conservation areas and other heritage assets means that there are often limits to the contribution that orientation, height and footprint can make towards the energy efficiency of a building. This dense character, along with the varying heights of buildings in central London, can also make the installation of various technologies, including renewable energy technologies more difficult. For example, the efficient use of photovoltaics in Central London can be constrained by overshadowing from taller buildings. We will expect high quality and innovative design to help combat these constraints. Energy efficiency measures relating to heritage assets will be welcomed provided that they do not cause harm to the significance of the heritage asset and its setting. The refurbishment of some existing properties in the borough, such as Camden's EcoHouse in Camden Town and a home in Chester Road in Highgate have demonstrated how Victorian properties can be upgraded to meet Level 4 of the Code for Sustainable Homes energy performance standards. Given the large proportion of development in the borough that relates to existing buildings, we will expect proportionate measures to be taken to improve their environmental sustainability, where possible. Further details on this can be found in our Camden Planning Guidance supplementary document.



Making use of energy from efficient sources

- 13.10 Once a development has been designed to minimise its energy consumption in line with the approach above, the development should assess its remaining energy needs and the availability of any local energy networks or its potential to generate its own energy from low carbon technology. The Council's full approach to local energy generation and local energy networks is set out below (paragraphs 13.16 – 13.22).

Generating renewable energy on-site

- 13.11 Buildings can also generate energy, for example, by using photovoltaic panels to produce electricity, or solar thermal panels, which produce hot water. Once a building and its services have been designed to make sure energy consumption will be as low as possible and the use of energy efficient sources has been considered, the Council will expect developments to achieve a reduction in carbon dioxide emissions of 20% from on-site renewable energy generation (which can include sources of site-related decentralised renewable energy) unless it can be demonstrated that such provision is not feasible. Details on ways to generate renewable energy can be found in our Camden Planning Guidance supplementary document.

Adapting to climate change

- 13.12 It is predicted that in the future we will experience warmer, wetter winters and hotter, drier summers. In addition, Camden is likely to experience more intense rainfall and local flooding, more days with especially poor air quality, increased demand for its open spaces and outdoor pools and increased summer demand for electricity for cooling. To minimise the future need for summer cooling we will expect the design of developments to consider anticipated changes to the climate. For further details on what measures should be considered see policy DP22 – *Promoting sustainable design and construction* in Camden Development Policies. The Council is in discussions with the National Grid regarding future infrastructure improvements including, potentially, a new electricity grid supply point. To help ensure there is adequate water in the future we will require developments to be water efficient. Our overall approach to water conservation and run-off is detailed below.
- 13.13 Camden is fortunate that it contains Hampstead Heath, Primrose Hill and a part of Regent's Park which help reduce long term heating of the city, known as the urban heat island effect, and provide cool space in hot weather. We will continue to protect our open spaces and other green spaces, where possible, and seek to create additional open spaces. We will also continue to protect the borough's trees and encourage the creation of green and brown roofs and green walls, which help to keep local air temperatures lower. For more detail on how we are protecting and improving our open spaces and other green spaces please see policy CS15 – *Protecting and improving our parks and open spaces and encouraging biodiversity*. Policy DP24 – *Securing high quality design* in Camden Development Policies sets out how we will protect gardens, where possible.

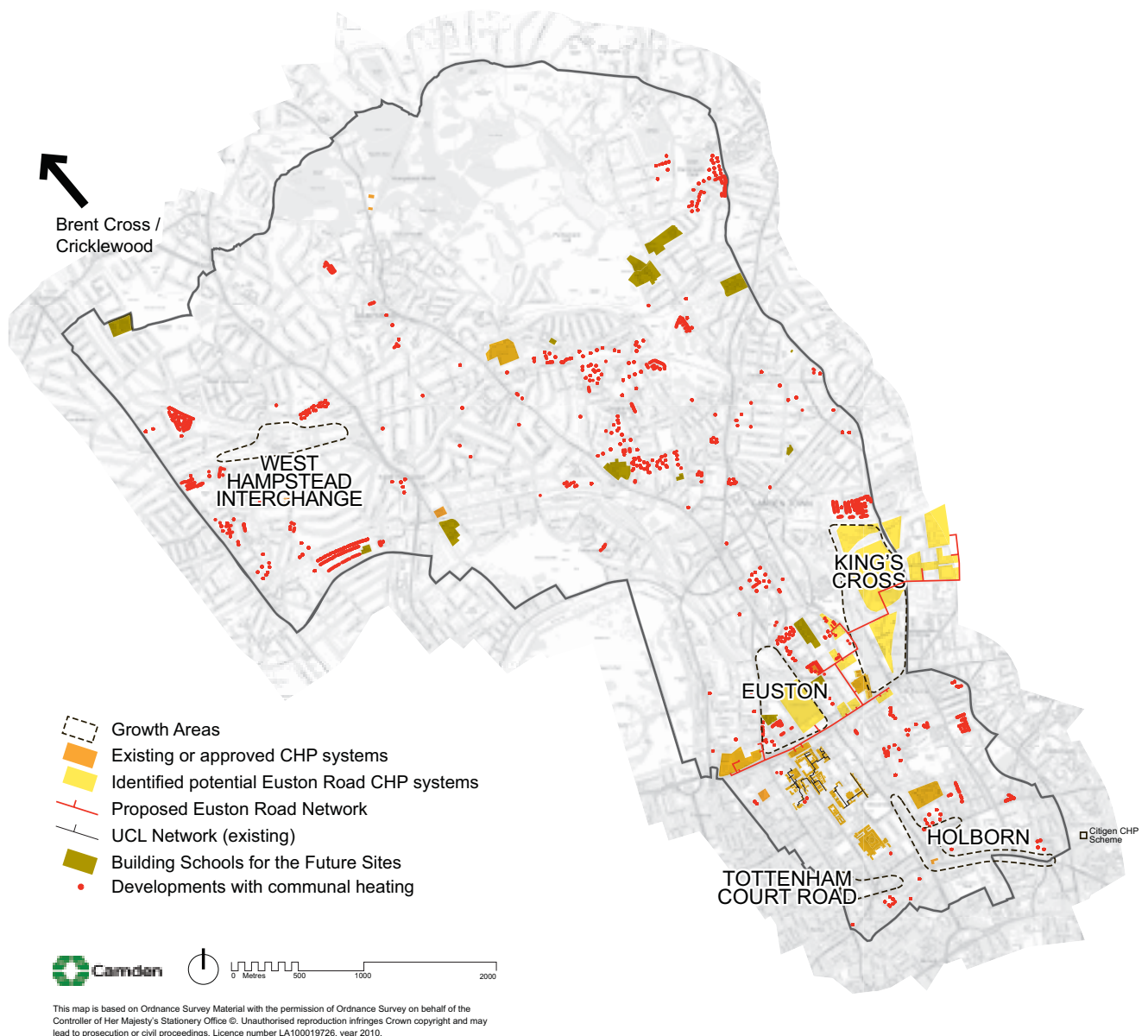
- 13.14 Climatic changes will affect which plant and animal species thrive or decline. The City of London, which is responsible for Hampstead Heath, has identified potential threats to open spaces and biodiversity in its Climate Adaptation Strategy. It will therefore be important for the Council, other owners of open space and developers to consider the adaptation needs of plants and wildlife. The Council is trialling lower maintenance plant species at Waterlow Park and Cumberland Market. For more detail on our approach to biodiversity please see policy CS15.
- 13.15 We will also continue our strong efforts to reduce air pollution through mitigation and reducing traffic. Please see policy CS11 – *Promoting sustainable and efficient travel*. Detail on how we will expect development to take into account climate change is set out in policy DP22 – *Promoting sustainable design and construction* in Camden Development Policies.

Local energy generation and networks

- 13.16 The *Delivering a Low Carbon Camden* report concludes that the most cost-effective way for Camden to meet its carbon reduction targets is through a local energy generation and distribution system served by combined heat and power (CHP). CHP systems typically supply buildings with heat and power (usually electricity) generated on-site or nearby, therefore avoiding the losses which occur in transmitting electricity from plants outside London. CHP is highly efficient and can therefore make a significant contribution to goals to minimise carbon emissions. Cooling can also be incorporated in such systems where there is appropriate demand (known as combined cooling, heating and power or CCHP).
- 13.17 New decentralised energy networks negotiated through the planning system are most likely to begin in, and expand out from, the growth areas of King's Cross, Euston, Tottenham Court Road, West Hampstead Interchange and Holborn due to the expected scale and mix of development. A local energy network fuelled by gas-fired combined heat and power, a fuel cell and renewable sources has been approved as part of the King's Cross redevelopment. There are possibilities to expand this network beyond the border of the site, including into Islington. Camden is also working with the London Development Agency (LDA) and land owners to establish a decentralised energy network along Euston Road and into Islington. Map 4 shows the areas considered most likely to provide development-led decentralised energy networks.
- 13.18 Providing a decentralised energy network in an already built up area is difficult. Although there is currently no extended CHP network in the borough, numerous Council housing estates are already on a community heating system, which can provide a starting point for a wider energy network serviced by CHP. There are also three successful local energy networks in the borough fed by CHP (two serving University College London buildings, one serving two housing developments on Eversholt Street) as well as individual systems at the Swiss Cottage Leisure Centre and the Royal Free Hospital in Gospel Oak and approved schemes at King's Cross, Regent's Place Estate, Southampton Row and Great Ormond Street Hospital. Where decentralised energy networks already exist, development in the area will be required to connect to them, unless it is proven not to be technically feasible or commercially viable.
- 13.19 The Council will require the developers of any large scheme within proximity of a Council housing estate to speak to us about the possibilities of exporting heat to the existing homes. We will also expect developments to export heat to any willing user, where feasible and viable. The largest possible decentralised energy system fed by CHP should be implemented. Where developments in the vicinity of an existing local energy network do not connect to that network or do not include their own CHP system due to feasibility and viability, we will require them to provide the on-site infrastructure for future connection and, where reasonable, a contribution towards laying future connections. The Council is investigating setting up a local energy network fed by CHP for Camden Town Hall, Argyle Street Primary School and two existing housing developments.
- 13.20 We will work with adjoining boroughs to promote connections to new or existing decentralised energy networks and with the Greater London Authority and London Development Agency to provide advice on funding and linking developments and systems. It will be important to provide for future links to decentralised energy networks within developments or across roads and sites where they are likely to be needed, as providing connections later is difficult in built up places like

Camden. See *Community Energy: Urban Planning for a Low Carbon Future* by the Combined Heat and Power Association and the Town and Country Association for more information on community heating, renewable energy and CHP.

Map 4: Combined Heat and Power Network



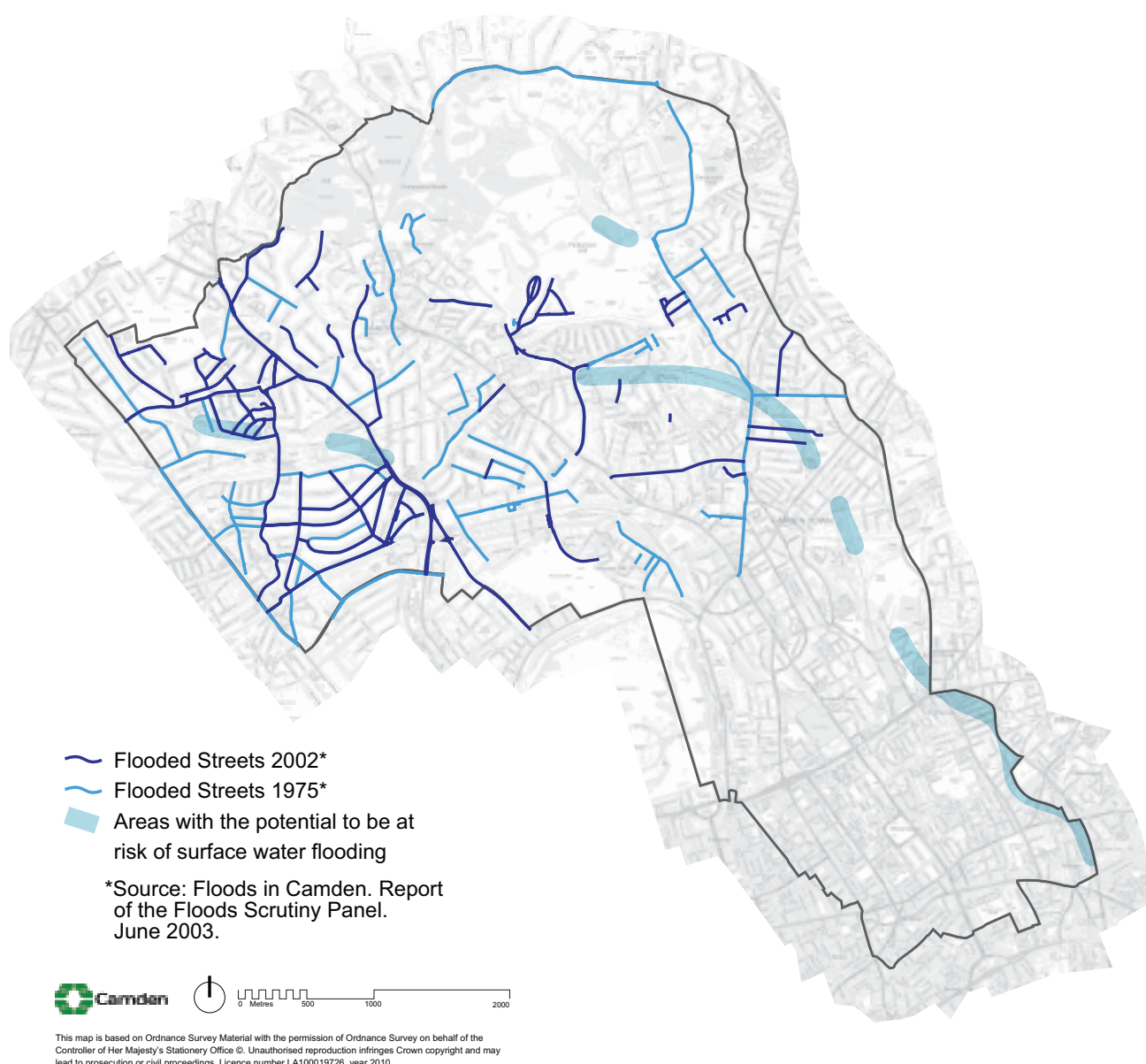
- 13.21 There is growing technical potential to generate heat from waste. The North London Waste Plan will identify future sites for waste facilities in the area (see policy CS18). Given the environmental benefits of using waste for heat, such as less waste going to landfill and turning waste into a resource, the Council will welcome proposals for energy from waste schemes in suitable locations, where they do not cause harm to the amenity of local occupiers.
- 13.22 The Camden Sites Allocations document will identify any areas or sites where we consider zero carbon development can successfully be promoted. These are likely to be areas or sites near one of the likely CHP locations shown on Map 4.



Water and surface water flooding

- 13.23 Water is an important resource which requires energy to clean it to drinking standard and to pump it to every building. Population growth and increased levels of water consumption per person mean that the availability of this resource is under pressure. Our growing population and an increase in hard surfaces also mean there is more foul water and rain water to be dealt with. These issues are predicted to become more important with hotter, drier summers reducing the amount of water available, and wetter winters putting additional pressure on the combined sewer and run-off network. Therefore, the Council will protect the borough's existing water infrastructure to ensure there is adequate water supply, water storage and foul water capability. Camden has five reservoirs, of which four are currently in use for storing drinking water. Thames Water has stated that these sites are likely to require future development and expansion to meet their operational requirements.
- 13.24 Thames Water identified that there will be a shortfall in the water supply for London within the next 30 years if measures are not taken. However, it will seek to ensure an adequate supply through education and metering to reduce consumption, continuing to repair water pipes, the construction of a desalination plant at Beckton and providing a new reservoir, if required (see Appendix 1 – *Key infrastructure programmes and projects* – item 60). To promote responsible consumption, the Council is working with Thames Water to install water meters in homes in Council ownership, as well as requiring all new development to install water efficient devices through the requirements in the Code for Sustainable Homes and BREEAM assessments.
- 13.25 Although Camden has very low risk from flooding from waterways, the North London Strategic Flood Risk Assessment identified several areas in the borough, in particular West Hampstead, that have experienced surface water flooding when existing water infrastructure has not been able to cope with surface and foul water at the same time as the result of heavy rain. The Environment Agency has developed a map showing areas with the potential to flood given the topography and depth of the site. Map 5 shows the parts of the borough that have experienced significant sewer or surface water flooding and the places that are considered to have the potential to be at risk of surface water flooding. The Council will require major developments or development that increases the amount of impervious surfacing to adequately manage the increases in surface water or sewage discharge and take account of known sewer flooding problems by including appropriate mitigation measures to avoid increased drainage problems and flood risk downstream. Our approach to basement/underground development is contained in Camden Development Policies (see policy DP27 – *Basements and lightwells*).

Map 5: Surface Water Flood Risk Potential



- 13.26 Thames Water's initial modelling indicates that local infrastructure improvements are likely to be required for Camden's growth areas, specifically King's Cross and Euston. As the combined sewer across the borough is a network, it will be important that all developments release as little foul and grey water (water from sinks, showers and washing machines) into the combined sewer system as possible by minimising the amount of water used on site and maximising re-use of grey water. British Waterways has identified the Regent's Canal as a source of grey water. Larger developments in areas already suffering from surface water flooding can provide the opportunity for improvements to be made to local infrastructure. Thames Water has advised the Council that the existing strategic, 'trunk' infrastructure is likely to be able to accommodate growth levels. In addition, it is building the Thames Tideway Scheme to improve the capacity of London's combined sewer network. Further information on planned sewerage/waste water infrastructure and sustainable urban drainage systems is provided in Appendix 1 – *Key infrastructure programmes and projects* (items 60 and 61).
- 13.27 The Council's detailed approach to water use and management within developments is set out in Camden Development Policies (policy DP23 – *Water*).



The Council's carbon reduction measures

13.28 The Council is undertaking a range of measures to reduce its own energy use and energy use throughout the borough. These include:

- fuelling 50% of the Council vehicle fleet by liquefied petroleum gas (LPG), electricity or hybrid means;
- installing energy efficiency measures in Council houses;
- using sustainable timber as standard in housing refurbishment;
- investing in cavity wall and roof insulation for Council homes and private sector housing (over 2,000 dwellings have received cavity wall insulation);
- making 'eco-grants' available for various measures, including the installation of solar panels and green roofs;
- our Small steps, Big difference campaign to raise awareness of climate change and encourage changes to behaviour to reduce the borough's environmental impact; and
- supporting the introduction of energy efficient and carbon saving technology. For example, by investing in our own hydrogen fuel cell which is also used as an education tool and by trialling biomethane in our vehicle fleet.

Further Council initiatives are set out in our Climate Change and Environmental Sustainability Delivery Plan 2008-2012.

Key evidence and references

- Delivering a Low Carbon Camden – Carbon Reduction Scenarios to 2050; SEA-Renue; 2007
- Towards a Sustainable Camden. Camden's Environmental Sustainability Delivery Plan 2008-2012
- Camden Sustainability Task Force Report on Energy and Energy Efficiency; 2007
- Camden Together – Camden's Sustainable Community Strategy; 2007 – 2012
- North London Strategic Flood Risk Assessment, Mouchel; 2008
- The London Plan (consolidated with Alterations since 2004); Mayor of London; 2008
- Action Today to Protect Tomorrow – Mayor's Climate Change Action Plan; 2007
- Planning Policy Statement: Planning and Climate Change – Supplement to Planning Policy Statement 1; CLG; 2007
- Planning Policy Statement (PPS) 22: Renewable energy; ODPM; 2004
- Planning Policy Statement 25: Development and Flood Risk, CLG, 2006
- Community Energy: Urban Planning for a Low Carbon Future; The Combined Heat and Power Association and the Town and Country Association 2008
- Hampstead Heath Management Plan Part 1. Towards a Plan for the Heath 2007-2017; City of London & Land Use consultants; 2007

CS14. Promoting high quality places and conserving our heritage

- 14.1 Camden does not have a single built character but is made up of many diverse areas, each with their own identity. The southern part of the borough, which forms part of Central London, is characterised by a high density built environment and complex mix of uses. The central part of the borough contains several town centres surrounded by areas of medium-density housing and some employment uses. The north of the borough is predominantly residential of a lower density with substantial open space at Hampstead Heath. Throughout the borough there are examples of Camden's unique architectural heritage, with many high quality buildings and places, old and new. This is reflected in our large number of conservation areas and listed buildings, which have been recognised for their special architectural or historic interest.
- 14.2 Our overall strategy is to sustainably manage growth in Camden so it meets our needs for homes, jobs and services in a way that conserves and enhances the features that make the borough such an attractive place to live, work and visit. Policy CS14 plays a key part in achieving this by setting out our approach to conserving and, where possible, enhancing our heritage and valued places, and to ensuring that development is of the highest standard and reflects, and where possible improves, its local area. Policy CS13 above and policy DP22 in Camden Development Policies set out our approach to ensuring that design in the borough is sustainable and that schemes include measures to minimise the effects of, and adapt to, climate change.

CS POLICY

CS14 – Promoting high quality places and conserving our heritage

The Council will ensure that Camden's places and buildings are attractive, safe and easy to use by:

- a) requiring development of the highest standard of design that respects local context and character;
- b) preserving and enhancing Camden's rich and diverse heritage assets and their settings, including conservation areas, listed buildings, archaeological remains, scheduled ancient monuments and historic parks and gardens;
- c) promoting high quality landscaping and works to streets and public spaces;
- d) seeking the highest standards of access in all buildings and places and requiring schemes to be designed to be inclusive and accessible;
- e) protecting important views of St Paul's Cathedral and the Palace of Westminster from sites inside and outside the borough and protecting important local views.

Excellence in design

- 14.3 Camden has many special and unique places and historic and modern buildings of the highest quality. As well as preserving this rich heritage, we should also be contributing to it by making sure that we create buildings of equally high quality that will be appreciated by future generations. The design of the places and buildings that make up our local environment affects us all and our quality of life. High quality design is visually interesting and attractive but it is not just about what things look like. Good design makes places that put people first, are welcoming, feel safe and are enjoyable and easy to use for everyone, whether they are living in, working in or just passing through the borough.

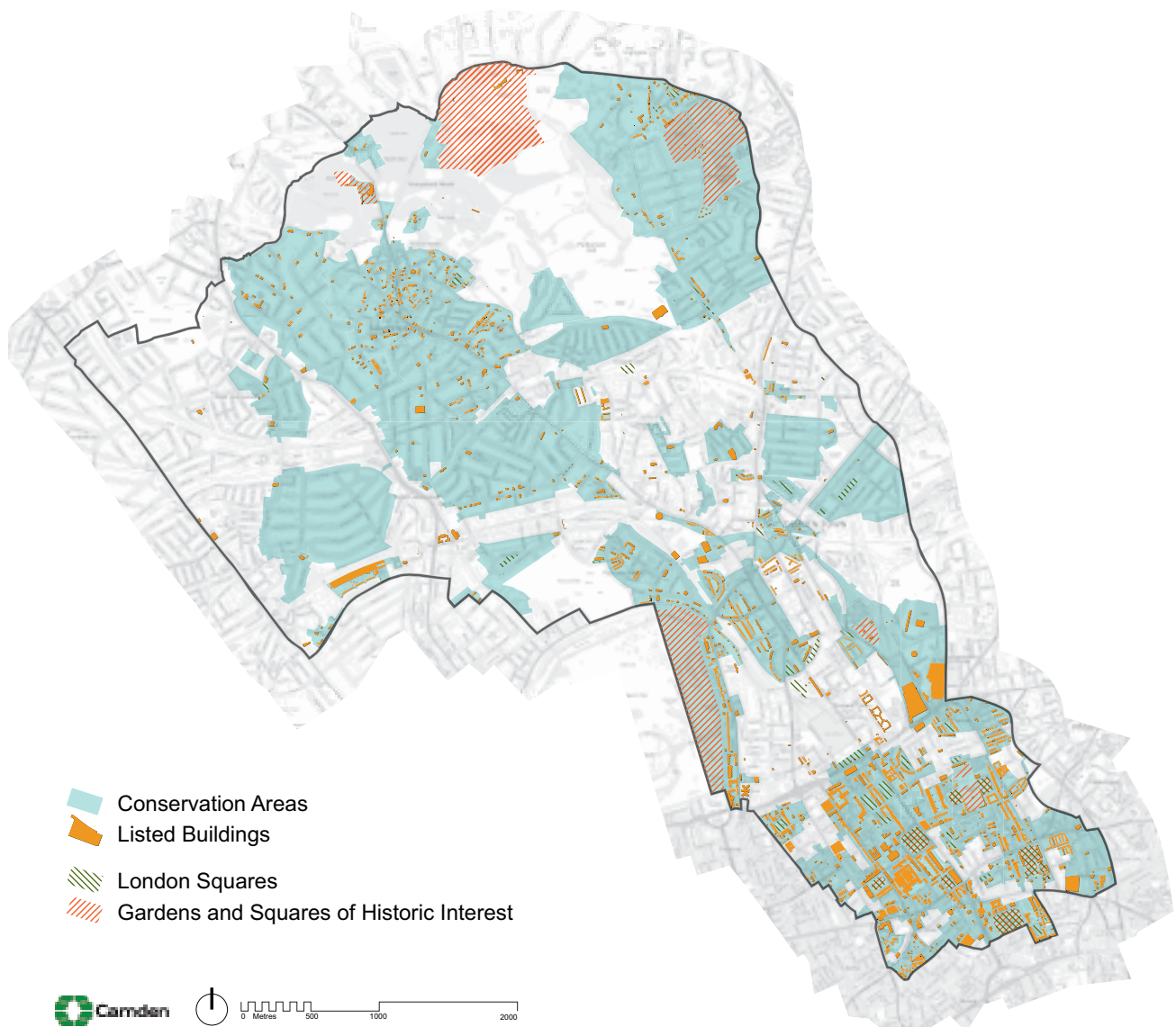


- 14.4 Development schemes should improve the quality of buildings, landscaping and the street environment and, through this, improve the experience of the borough for residents and visitors. The Council will therefore insist on high quality design throughout the borough. In accordance with government guidance in Planning Policy Statement (PPS) 1 – *Delivering Sustainable Development* we will not accept design that is considered inappropriate to its context or which fails to take opportunities to improve the character and quality of an area and the way it functions. Please see Camden Development Policies (policy DP24) for more detailed guidance on our approach to the design of new development and alterations and extensions. When assessing design, we will also take into account government/CABE guidance *By Design – Urban Design in the planning system: towards better practice* and our own Camden Planning Guidance supplementary document.
- 14.5 The Council is working with its partners to promote and celebrate excellence in design and improve public buildings, landscaping and the street environment; for example through the Camden Design Initiative, which seeks to improve public space and the built environment and encourage involvement, awareness and understanding of good design, including the bi-annual Camden Design Awards, which recognise high quality and innovative designs.
- 14.6 Good design is safe and accessible, and responds flexibly to the needs of its users. It creates buildings that have minimal negative impact on the environment, during construction and beyond. The construction and use of buildings currently accounts for around half of national carbon emissions and it is therefore vital that new and redeveloped buildings are designed to have a beneficial impact on their environment. See CS13 – *Tackling climate change through promoting higher environmental standards* and CS17 – *Making Camden a safer place* for our approach to these matters.
- 14.7 High quality design also takes account of its surroundings and what is distinctive and valued about the local area. Camden is made up of a diversity of areas, each with their own distinctive character, created by many elements such as architectural style and layout, social and economic history, landscaping and mix of uses – as summarised in the description of Camden’s character below. As Camden is a densely built-up borough where most development involves the replacement, extension or conversion of existing buildings, taking account of context and local character is particularly important. The Council will therefore expect the design of buildings and places to respond to the local area and its defining characteristics and reinforce or, if appropriate, create local distinctiveness.
- 14.8 While tall buildings offer the opportunity for intensive use, their siting and design should be carefully considered in order to not detract from the nature of surrounding places and the quality of life for those living and working around them. Applications for tall buildings will be assessed against policy CS14 and policies DP24 – *Securing high quality design* and DP25 – *Conserving Camden’s heritage* in Camden Development Policies, along with the full range of policies on mixed use, sustainability, amenity and microclimate. and other relevant policies. Effect on views, impact on local microclimate and provision of communal and private amenity space will also be important considerations.

Camden's heritage

- 14.9 Camden has a rich architectural heritage with many special places and buildings from throughout Camden's history (see map 6). 39 areas, covering much of the borough, are designated as conservation areas, recognising their special architectural or historic interest and their character and appearance. We have prepared conservation area statements, appraisals and management strategies that provide further guidance on the character of these areas. We will take these documents into account as material considerations when we assess applications for planning permission and conservation area consent in these areas.
- 14.10 Over 5,600 buildings and structures in Camden are nationally listed for their special historical or architectural interest, and 53 of the borough's squares are protected by the London Squares Preservation Act 1931. In addition, 14 open spaces in Camden are on English Heritage's Register of Parks and Gardens of Special Historic Interest. The Council will consult with English Heritage over proposals affecting these parks and gardens. We also encourage the restoration and management of Parks and Gardens of Special Historic Interest and London Squares to enhance their value. Camden also has a generally well-preserved archaeological heritage, with 13 identified archaeological priority areas, although this can be vulnerable to modern development and land use.

Map 6: Heritage



This map is based on Ordnance Survey Material with the permission of Ordnance Survey on behalf of the Controller of Her Majesty's Stationery Office ©. Unauthorised reproduction infringes Crown copyright and may lead to prosecution or civil proceedings. Licence number LA100019726, year 2010.

- 14.11 We have a responsibility to preserve and, where possible, enhance our heritage of important areas and buildings. Policy DP25 in Camden Development Policies provides more detailed guidance on the Council's approach to protecting and enriching the range of features that make up our built heritage.
- 14.12 Architectural detail, materials, colour and structures such as walls can make a significant contribution to the appearance of an area, but can often be altered without the need for planning permission. Cumulatively, many minor building works can gradually erode the quality of an area and undermine the quality of conservation areas. We will therefore make use of 'Article 4 Directions' in appropriate locations to bring some minor works under planning control. We are intending to introduce such measures in the conservation areas of Belsize, Hampstead, and Swiss Cottage, where loss of historic character through cumulative change is apparent. Primrose Hill conservation area already benefits from a comprehensive Article 4 Direction, which has helped to retain its high quality historic character.

Landscaping and public realm

- 14.13 The quality of our streets and public spaces affects the quality of all our lives. We enjoy being in and passing through attractive, clean and well-maintained places, but are discouraged from walking in and through areas with a poor environment. An enhanced public realm should integrate transport and land use, contribute to improved walking and cycling environments, respect and reinforce local identity and character, attract people to the area and encourage the use of streets and public spaces to create diverse, vibrant and lively places.
- 14.14 The Council is committed to improving Camden's streets and public spaces and has carried out many improvement schemes with many more ongoing and planned. We have produced a Camden Streetscape Design Manual to raise the standard of street works throughout the borough. This sets standards for our own works and provides guidance for other agencies. It encourages respect for local character and promotes high quality, clutter-free design to make streets and public places that are safe and easy to use for all.
- 14.15 A number of studies on streets and spaces have been produced, particularly for the south of the borough (e.g. Bloomsbury, King's Cross and St Giles/Tottenham Court Road). These have been commissioned and funded by a range of organisations (including TfL, LDA, Design for London and UCL) sometimes in partnership with the Council. It is procedurally difficult for the Council to adopt these non-statutory documents as formal planning or other guidance. We will therefore look to draw on the best of this work to create a long-term vision for these areas, emphasising local character and providing a high quality environment for walking, which is formally agreed by the Council.
- 14.16 In order to improve the environment for walking in the borough, Camden is committed to the 'Legible London' concept which aims to improve how easily pedestrians can understand the layout of the capital and find their way around by introducing clear and consistent signage and maps. The programme has begun in Covent Garden and Bloomsbury, and future schemes are anticipated around the borough. Camden has also established a 'Place Shaping Board' to consider the most appropriate ways to shape the services, facilities, infrastructure and public realm to meet the needs of current and future populations (see section 4 – *Delivering and Monitoring the Core Strategy*).
- 14.17 Further information on measures being taken by the Council and its partners to improve the quality of our streets and public places is included in CS2 – *Growth areas*, CS8 – *Promoting Camden's centres and shops*, CS11 – *Promoting sustainable and efficient travel*, CS15 – *Protecting and improving our parks and open spaces and encouraging biodiversity*, and CS17 – *Making Camden a safer place*.
- 14.18 High quality landscaping plays an important role in the attractiveness and character of our surroundings. It can improve the setting of buildings, bring trees and other greenery into built-up areas to relieve the hard landscaping and provide shade, and provide habitats for wildlife. The Council will expect development schemes to provide a high standard of landscaping and boundary features, such as walls and fences. We will encourage appropriate use of landscaping in the form of 'green roofs', 'brown roofs' and 'green walls' which have a number of environmental benefits (e.g. in providing wildlife habitats, in helping to cool and insulate buildings and in retaining water, helping to

reduce flooding), as well as being visually attractive. More detail on our approach to landscaping is set out in the Council's Camden Planning Guidance supplementary document and policy DP22 in Camden Development Policies.

Access

- 14.19 Good access benefits everyone. However, many people are disadvantaged by poor access to facilities and vulnerable and disadvantaged groups, such as the elderly and disabled people, can be particularly affected. Poor access can be caused by difficulties in reaching facilities or by difficulties in using the facilities themselves. The Council requires new buildings and spaces to be inclusive and accessible to all. As accessibility is influenced by perceptions as well as physical factors, buildings should also be designed to appear, as well as be, fully accessible. The Council will require Design and Access Statements for developments to show how the principles of inclusive design, ensuring access for all, have been integrated into the proposed development, and how inclusion will be maintained and managed.
- 14.20 Making roads and pavements and the spaces between buildings fully accessible is as important as making the buildings themselves accessible. The Council will seek improvements for all pedestrians to ensure good quality access and circulation arrangements, including improvement to existing routes and footways. The Camden Streetscape Design Manual and our Camden Planning Guidance supplementary document provide more detailed guidance on this issue.

Views

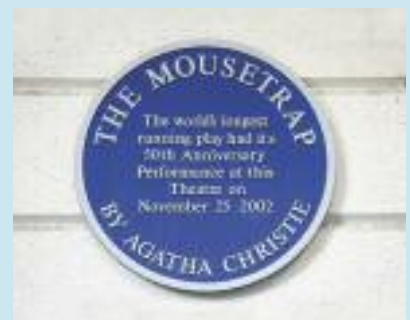
- 14.21 A number of London's most famous and valued views originate in, or extend into, Camden. These are:
- views of St Paul's Cathedral from Kenwood, Parliament Hill and Primrose Hill;
 - views of the Palace of Westminster from Primrose and Parliament Hills; and
 - background views of St Paul's from Greenwich and Blackheath.
- 14.22 The Council will protect these views in accordance with London-wide policy and will resist proposals that would harm them. Where existing buildings that affect a view are redeveloped it is expected that any replacement building will be of a height that does not harm the view. The current framework for protecting these views is set by the London Plan (policies 4B.16 – 4B.18) and the Mayor's London View Management Framework supplementary planning guidance.
- 14.23 The Council will also consider the impact of a scheme, in terms of the townscape, landscape and skyline, on the whole extent of a view ('panorama'), not just the area in the view corridor. Developments should not detract from the panorama as a whole and should fit in with the prevailing pattern of buildings and spaces. They should seek to avoid buildings that tightly define the edges of the viewing corridors and not create a crowding effect around the landmark.
- 14.24 The Council will also seek to protect locally important views that contribute to the interest and character of the borough. These may include:
- views of and from large public parks and open spaces, such as Hampstead Heath, Kenwood Estate, Primrose Hill and Regent's Park, including panoramic views, as well as views of London Squares and historic parks and gardens;
 - views relating to Regent's Canal;
 - views into and from conservation areas; and
 - views of listed and landmark buildings and monuments and statutes (for example, Centrepont, St Stephen's, Rosslyn Hill and St George's, Bloomsbury).
- 14.25 We will seek to ensure that development is compatible with such views in terms of setting, scale and massing and will resist proposals that we consider would cause harm to them. Development will not generally be acceptable if it obstructs important views or skylines, appears too close or too high in relation to a landmark or impairs outlines that form part of the view. Further guidance on important local views is set out in our supplementary planning documents, for example in individual conservation area statements, appraisals and management strategies and the Planning Framework for the Tottenham Court Road Station and St Giles High Street Area.

Camden's character

Camden is characterised by a great richness and variety in its built and natural environment, with a valuable heritage of local, national and international significance. The following section describes the places, buildings and features that give Camden its distinctive character.

The southern part of the borough is where most of Camden's future growth will take place. It forms part of Central London and has a richly varied and dense character. The planned Georgian streets and squares (e.g. Bedford, Russell, Fitzroy) of Bloomsbury are evidence of the early expansion of London in a form that was architecturally groundbreaking. Modest mews developments to the rear of the terraces contrast in scale and are a particularly characteristic type here and elsewhere in the borough. Regents Park and Nash's 1820s residential development sit at the south western boundary of the borough, contrasting with the earlier Georgian developments in the area.

King's Cross and Euston are parts of the borough that are expected to experience the most change and development over the next fifteen years. Railways have had a significant impact on the appearance of the borough from the 19th century to the present day. These brought monumental architecture and inward migration to the borough and their viaducts, cuttings, tunnels and buildings still affect the shape of development in many parts of Camden, in particular to the north of Euston Road. King's Cross was the largest station in England when it opened and is the earliest great London terminus still intact in its original form. St Pancras (by George Gilbert Scott), now the new London terminus for Eurostar, can claim to be Britain's most impressive station in terms of both architecture and engineering and the station's dramatic roof line forms an important local landmark. Euston station, its ancillary accommodation and railway lines have a major impact on the nature of its surroundings and its future redevelopment will create opportunities to improve the local environment and links between neighbouring areas.





The Inns of Court were some of the earliest establishments in the southern part of the borough. The historic buildings, courtyards and squares of Lincoln's Inn and Gray's Inn give a distinctive atmosphere to this part of Camden, and create oases away from surrounding busy roads. Camden's Central London area also contains Seven Dials with its unusual star-shaped street layout and sundial pillar and the brick, semi-industrial buildings and intimate spaces of Hatton Garden, which were developed in the 19th century to house the workshops and offices of the jewellery trade. The area remains an internationally significant jewellery quarter.

Camden is home to a large number of further education establishments and most are located in the southern part of the borough, including the University of London, London School of Tropical Medicine, Central St Martin's College of Art and Design and the Royal Academy of Dramatic Art. These play a significant role in shaping the character and appearance of this part of the borough. The south of the borough also houses a number of nationally important hospitals and medical research institutions, including Great Ormond Street Hospital, the National Hospital for Neurology and Neurosurgery and the Wellcome Trust.



The town centres of Camden Town, Kentish Town and Kilburn High Road are key elements in **the central part of the borough**. These centres developed in a piecemeal fashion along historic routes into London. They are now marked by continuous, close grained development with commercial units at ground floor level on either side of the road, with terraced housing of a similar density on the streets to the east and west, and little open space. Buildings types are generally consistent in appearance, and public houses are frequent landmarks, which echo the original inns and travellers rests along the historic routes. There is a narrow range of scale and height, and dwellings usually have small gardens to front and rear. Camden Town is strongly characterised by its markets and entertainment. These create a strong draw for tourists and influence the style and appearance of development, which is in many cases colourful and individual.

The areas between these major roads and town centres are characterised by speculative, residential development from the mid to late 19th century for the then new middle classes. These show a variety of distinctive architectural forms and scales, with detached and semi-detached houses in classical Italianate form in Belsize and an eclectic variety of styles including neo-Gothic, Queen Anne, Domestic Revival, Arts & Crafts in Fitzjohns/Netherhall, Redington/Frognaal and South Hampstead/Swiss Cottage. Gospel Oak, West Hampstead and the southern parts of Dartmouth Park were developed to a higher density with terraced houses, smaller gardens and have a more urban feel than Camden's other residential areas.

Social housing schemes are also an important element in the borough's built environment. St Andrews House on Saffron Hill is the oldest surviving public housing block in London whilst early 20th century examples include the London County Council's Bourne Estate on Leather Lane. The LLC's Ossulston Estate is considered the most important inner-city estate of the inter-war period. Post-war examples illustrate an architecturally ambitious programme of housing schemes by Camden Council following its creation in 1965, many of which are listed. The characteristic form was a megastructure of stepped terraces. This low rise, high density approach reflected traditional terraced housing, but provided light, privacy and private open space for all levels of accommodation. Examples are Brunswick Centre, and the estates of Fleet Road, Alexandra Road, Maiden Lane and Highgate New Town.

The Regent's Canal runs through the centre of the borough. Although it is often hidden from surrounding areas, it provides an area of nature conservation interest and amenity space along its course through King's Cross and Camden Town to Regent's Park.

The northern part of the borough benefits from the presence of the large open space of Hampstead Heath, which provides amenity and leisure space, a verdant setting to the surrounding development and famous views across London. Hampstead and Highgate are derived from medieval hamlets and have clearly defined village centres which reflect their origins. They have a variety of building types from cottages and terraces to detached houses and grand residences, with a generally densely packed, high quality urban grain of a range of styles, scales and ages. Both areas contain many high quality, architect-designed houses from the 19th and 20th centuries, many of which have become important parts of the local heritage and are listed for their national significance.



Key evidence and references

- Conservation Area Statements/Appraisals/Management Strategies; London Borough of Camden; various dates
- Camden Walking Plan Second Edition 2006
- Camden Streetscape Design Manual 2005
- Planning Policy Guidance 16 – Archaeology and planning; DETR; 1990
- Conservation Principles, Policies and Guidance, English Heritage, 2008
- By Design: Urban Design in the Planning System – Towards Better Practice; DETR/CABE; 2000
- Planning Policy Statement 1 – Delivering Sustainable Development; ODPM; 2005
- Planning Policy Statement 5 – Planning for the Historic Environment; CLG; 2010
- Planning Policy Guidance 15 – Planning and the Historic Environment; DoE; 1994
- The London Plan (consolidated with Alterations since 2004); Mayor of London; 2008
- London View Management Framework Supplementary Planning Guidance; Mayor of London; 2007
- Sustainable design, climate change and the built environment; CABE Briefing; 2007
- Easy Access to Historic Buildings, English Heritage, 2004
- Easy Access to Historic Landscapes, English Heritage, 2005
- Seeing History in the View: Methodology for assessing the heritage value within views, English Heritage, 2008
- Guidance on Tall Buildings, English Heritage/CABE, 2007



CS18. Dealing with our waste and encouraging recycling

- 18.1 The amount of waste we produce is increasing and the traditional ways of dealing with it (for example, exporting it to landfill sites outside London) are becoming increasingly unacceptable, financially and environmentally. Therefore, we need to find better ways of dealing with our waste, taking more responsibility for dealing with it within London. This will include reducing the amount of waste we produce, increasing the re-use and recycling of materials and finding sites for new waste facilities.
- 18.2 We also face specific challenges in dealing with waste in Camden. For example, the borough's ability to be self-sufficient in waste is limited by its built-up character and the lack of sites on which to build waste management facilities. Also, the nature of Camden's housing stock, with a large proportion of flats and a significant number of homes without gardens, means that some homes have limited space for storing recycling containers and reduced opportunities for composting.
- 18.3 The Council recognises that Camden cannot adequately deal with its waste in isolation. Therefore, it is a member of the North London Waste Authority, which is responsible for the disposal of waste collected in the boroughs of Barnet, Camden, Enfield, Haringey, Hackney, Islington and Waltham Forest.

CS POLICY

CS18 – Dealing with our waste and encouraging recycling

The Council will seek to make Camden a low waste borough. We will:

- | | |
|--|--|
| <p>a) aim to reduce the amount of waste produced in the borough and increase recycling and the re-use of materials to meet our targets of 40% of household waste recycled by 2010, 45% by 2015 and 50% by 2020;</p> <p>b) make sure that developments include facilities for the storage and collection of</p> | <p>waste and recycling;</p> <p>c) deal with North London's waste by working with our partner boroughs in the North London Waste Authority to produce a North London Waste Plan, which will ensure that facilities are provided to meet the amount of waste allocated to the area in the London Plan;</p> <p>d) safeguard Camden's existing waste site at Regis Road.</p> |
|--|--|

- 18.4 The Council is committed to reducing the amount of waste produced in the borough, encouraging recycling and managing collected waste in a sustainable way. It fully supports the objectives of sustainable waste management to move the management of waste up the 'waste hierarchy' of reduction, reuse, recycling and composting, to use waste as a source of energy where possible, and to only dispose of it as a last resort.
- 18.5 We believe that communities should take more responsibility for their own waste and will work to meet national and London-wide targets for waste and recycling. The London Plan sets targets for London to become more self sufficient in handling its waste, with facilities sought to manage 75% of London's waste by 2010, rising to 80% by 2015 and 85% by 2020. The London Plan expects Camden to manage 201,000 tonnes of waste in 2010 and 313,000 tonnes in 2020. However, we are pooling our waste with our partner boroughs in North London and working on joint solutions to the area's waste. The North London boroughs are together expected to deal with a total of 1,504,000 tonnes of waste in 2010, rising to 2,342,000 tonnes in 2020.
- 18.6 The North London Waste Authority and the seven boroughs have prepared a Joint Waste Strategy, which plans for managing the waste collected by the boroughs until 2020. This will be used to facilitate the provision of new waste management services, to increase recycling and recovery and divert more waste away from disposal to landfill.

- 18.7 In their role as planning authorities, the boroughs are preparing a joint planning document – the North London Waste Plan – which will sit alongside the North London Joint Waste Strategy to secure the sustainable management of our waste. It will identify appropriate locations, including existing sites, for a range of waste facilities to meet the needs of North London and will aim to ensure that benefits are maximised and the negative aspects minimised. In line with London Plan policy 4A.27, the North London Waste Plan will identify sites to deal with the management of waste collected by local authorities (municipal waste); commercial and industrial waste; construction, demolition and excavation waste; hazardous waste and agricultural waste. It will also contain some detailed policies to ensure that proposals for waste facilities will be dealt with consistently across the North London area.
- 18.8 Camden currently only has one waste site – the recycling and re-use centre at Regis Road – and will continue to safeguard it for waste use. The change of use of this site will only be permitted if a suitable compensatory waste facility is provided that replaces the facilities and services available at Regis Road (see London Plan policy 4A.24).
- 18.9 Camden will seek to increase recycling in the borough to meet the national target of 40% of household waste recycled by 2010, 45% by 2015 and 50% by 2020. Recycling in the borough has been increasing and over 27% of household waste was recycled in 2007/8, up from 16% in 2002/3. We have a number of schemes to encourage more recycling, including mini recycling centres, the reuse and recycling centre at Regis Road, and a weekly door-to-door recycling collection service. *Let's Talk Rubbish*, Camden's Waste Strategy, aims to reduce the amount of waste we produce in coming years and increase the amount we recycle. It contains our overall objectives for managing Camden's waste and sets out what we are doing to encourage recycling and waste reduction and provide recycling facilities and waste collection services.
- 18.10 To make sure that residents and businesses can properly store and sort their waste and to make household recycling as easy as possible, the Council will require developments to provide adequate facilities for recycling and the storage and disposal of waste. Facilities for home composting will be encouraged in appropriate development schemes. We will also seek to secure the re-use of construction waste on development sites to reduce resource use and the need to transport materials. The Council's Camden Planning Guidance supplementary planning document contains further information on the Council's expectations for on-site facilities for waste and recycling and on construction waste.
- 18.11 In 2008, the government made the preparation of Site Waste Management Plans mandatory for all developments worth £300,000 and more. These describe and quantify each waste type expected to be produced in the course of a project and identify the waste management action proposed for each, including re-using, recycling, recovery and disposal. To ensure an integrated approach to waste management and the highest possible re-use and recycling rates, the Council may require, through a planning condition, or as part of a Construction Management Plan, the submission of a site waste management plan prior to construction. Further details on Construction Management Plans can be found in the Camden Planning Guidance supplementary document.

Key evidence and references

- Let's Talk Rubbish – Camden's Waste Strategy 2007 – 2010 (revision 1, 2008)
- Camden Annual Monitoring Report 2007/8
- Camden Sustainability Task Force Report on Waste & Recycling; 2007
- North London Joint Waste Strategy 2004 – 2020; North London Waste Authority.
- The London Plan (consolidated with Alterations since 2004); Mayor of London; 2008
- Waste Strategy for England; Defra; 2007
- Rethinking Rubbish in London – The Mayor's Municipal Waste Strategy; 2003
- Planning Policy Statement (PPS) 10 – Planning for Sustainable Waste Management; 2005



Camden Development Policies 2010-2025

Local Development Framework



**If you would like this document in large print
or Braille, or in another language, please
contact 020 7974 5615**

Find out more about this document and the LDF by visiting camden.gov.uk/ldf
or by calling the LDF hotline 020 7974 5615/2043.

Forward Planning
London Borough of Camden
Town Hall Extension
Argyle Street
London WC1H 8EQ

Published November 2010.

Camden's Local Development Framework. Development Policies.



Section 1

Location and management of Camden's growth

- 1.1 It is estimated that Camden's population will increase by around 36,000 people (about 18%) between 2006 and 2026. This growth in population will be accompanied by an increase in the number of homes, offices and other land uses in the borough. As Camden is already highly built up and has many places that are highly valued by local people, we face specific challenges in how to adapt to our growing population while improving and protecting our environment and how to get the right developments in the right places.
- 1.2 *A sustainable Camden that adapts to a growing population* is one of the key themes in Camden Together - Camden's Community Strategy. Our Local Development Framework documents form one of the main mechanisms for achieving this. The Core Strategy sets out our overall strategy in relation to growth, where it happens and how it is managed (see paragraphs 16-19 above).
- 1.3 Camden Development Policies provides detailed planning policies to help implement our Core Strategy. The Core Strategy section on the *Location and Management of Camden's Growth* sets out our overall approach to where growth will happen and how we can make sure it works positively for the borough. Many of the policies in this document contribute to delivering elements of the policy approach in the *Location and Management of Camden's Growth* section of the Core Strategy. However, as this is predominately a strategic matter, there is only one issue – mixed use – for which we consider a detailed development policy is needed under the *Location and Management of Camden's Growth* theme.



DP1. Mixed use development

- 1.4 Core Strategy policy CS1 – *Distribution of growth* promotes the most efficient use of land and buildings in Camden. This includes encouraging a mix of uses in development and expecting the provision of a mix of uses in schemes in the most accessible parts of the borough. Policy DP1 helps to deliver this by setting out our detailed approach to mixed use development.
- 1.5 The Council assesses mixed-use schemes in terms of the ‘primary’ use, which is the largest land-use by floorspace, and ‘secondary’ uses, which are all uses with smaller floorspaces. Where a contribution to housing is sought, this refers to self-contained housing (Use Class C3), except in the case referred to in paragraph 1.9. For the purposes of comparing the non-residential and housing floorspace, the Council will use the gross external area.
- 1.6 Policy DP1 is a relevant consideration for all new build development and extensions involving a significant floorspace increase. No non-residential uses are excluded from the policy. However, we acknowledge that there are a number of circumstances where a mix of uses may not be sought.

DP POLICY

DP1 – Mixed use development

The Council will require a mix of uses in development where appropriate in all parts of the borough, including a contribution towards the supply of housing. In the Central London Area (except Hatton Garden) and the town centres of Camden Town, Finchley Road/ Swiss Cottage and Kilburn High Road, where more than 200 sq m (gross) additional floorspace is provided, we will require up to 50% of all additional floorspace to be housing.

As an exception to this approach, in the designated Hatton Garden area, where more than 200 sq m (gross) additional floorspace is provided, we will require up to 50% of all additional floorspace in the form of secondary uses, including a contribution to housing and a contribution to affordable premises suitable for the jewellery industry.

The Council will require any secondary uses to be provided on site, particularly where 1,000sqm (gross) of additional floorspace or more is proposed. Where inclusion of a secondary use is appropriate for the area and cannot practically be achieved on the site, the Council may accept a contribution to the mix of uses elsewhere in the area, or exceptionally a payment-in-lieu.

In considering whether a mix of uses should be sought, whether it can practically be achieved on the site, the most appropriate mix of uses, and the scale and nature of any contribution to the supply of housing and other secondary uses, the Council will take into account:

- a) the character of the development, the site and the area;
- b) site size, the extent of the additional floorspace, and constraints on including a mix of uses;
- c) the need for an active street frontage and natural surveillance;
- d) the economics and financial viability of the development including any particular costs associated with it;
- e) whether the sole or primary use proposed is housing;
- g) whether secondary uses would be incompatible with the character of the primary use;
- f) whether an extension to the gross floorspace is needed for an existing user;
- h) whether the development is publicly funded;
- i) any other planning objectives considered to be a priority for the site.

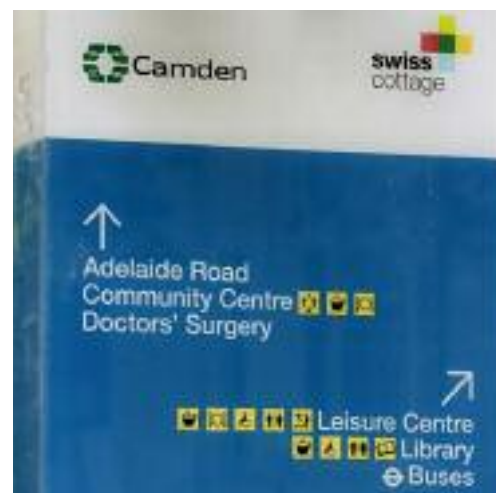
- 1.7 If we are going to adapt successfully to Camden's growing population, we need to make the best use of the borough's limited land. Developing a mix of uses on individual sites and across an area can be beneficial in a number of ways, such as:
- reducing the need to travel between homes, jobs and services;
 - providing a range of activities through the day, and so increasing community safety and security;
 - contributing to the creation of areas that are diverse, distinctive and successful;
 - allowing an efficient use of land, with other uses developed above those uses which need direct ground floor access or a street-level frontage, such as shops;
 - providing more opportunities for the development of housing.

Large parts of the borough have a well-established mixed-use character and the Council seeks to extend this.

- 1.8 Core strategy policy CS6 indicates that the Council will regard housing as the priority land use of the Local Development Framework. Core strategy paragraph 6.18 goes on to acknowledge that the priority given to housing does not override a number of other considerations, but will be considered alongside them, such as the need for jobs, services and facilities, and the importance of Central London as a focus of business, shopping, education, healthcare and research. Taking into account these considerations, the Council will consider whether a proposed development in the borough could appropriately include a mix of uses, and in appropriate cases will seek a contribution to the supply of housing. Other secondary uses that may be sought include shops, community facilities, open space and workshops for light industry. The need for secondary uses and the precise mix and proportion appropriate will vary in different locations and will be a matter for negotiation, taking into account all the criteria set out in policy DP1.
- 1.9 As noted in Core Strategy paragraphs 6.13 and 6.53, the Council is concerned that the provision of student housing and other housing with bedsit rooms and shared facilities could prejudice the supply of self-contained housing. Therefore, when applying policy DP1 to seek a contribution to the supply of housing, the Council will seek permanent self-contained housing (in Use Class C3). However, in the context of development for an educational institution supported by the Higher Education Funding Council for England, as an alternative to self-contained housing, the Council may accept student housing that serves the same institution.



- 1.10 Camden's Central London Area and the town centres of Camden Town, Swiss Cottage/Finchley Road and Kilburn High Road are the parts of the borough which have the best access to public transport, the best potential for a mix of uses, and the best prospect for the development of housing above active street frontages. Additional housing in these locations will help provide activity and surveillance when businesses are closed, and support shops, services and local facilities. Therefore, the Council will expect development schemes in Central London and our larger town centres to provide a mix of uses, and will seek to negotiate up to half of all additional floorspace as housing (in Use Class C3), such that additional floorspace in residential use matches all the additional floorspace in non-residential uses.
- 1.11 On the basis of the floorspace and ancillary space required to create a single self-contained home or a single commercial unit within a mixed-use development, the Council considers that a development adding more than 200 sq m (gross) of floorspace is sufficient to provide a mix of uses, including a contribution to the supply of housing. Housing provided as part of a mixed use scheme should be independent of other uses and have a separate access at street level or other arrangements which provide for occupation independent of any non-residential use.
- 1.12 Affordable housing will be sought in appropriate circumstances in line with Core Strategy policy CS6 – *Providing quality homes* and Policy DP3 – *Contributions to the supply of affordable housing*. For example, where a development adds 1,000 sq m of non-residential floorspace, up to 1,000 sq m of housing will be sought. If 1,000 sq m or more of housing is provided, then within this, a contribution will be sought to affordable housing in accordance with paragraph 3.8 under policy DP3. As indicated in paragraph 3.18, the Council's sliding scale approach to affordable housing contributions from sites with capacity for 10 to 50 dwellings will not apply to mixed-use developments providing 1,000 sq m of non-residential floorspace or more. Where a site provides less than 1,000 sq m of non-residential floorspace, but is expected to make a contribution to the supply of affordable housing under the provisions of policy DP3, housing will be the primary use, and the sliding scale approach will apply to the affordable housing contribution.
- 1.13 The designated Hatton Garden area has a special character due to its nationally and internationally important cluster of jewellery manufacture and trading. The Council seeks to preserve and enhance the special character of the Hatton Garden, and to secure and protect a stock of premises available for small jewellery workshops and related light industry. We will seek to balance the general priority for housing against the importance of workshops in the Hatton Garden area, and will seek contributions to both of these where the inclusion of secondary uses is appropriate. The precise mix between primary and secondary uses, and between housing and jewellery premises, will vary in different developments and will be a matter for negotiation, taking into account the criteria in policy DP1. Core Strategy policy CS8 and policy DP13 give more information regarding our approach to Hatton Garden.



- 1.14 The adoption of a mixed use approach means that there will inevitably be occasions when new business development adjoins new or existing residential accommodation. By definition, business uses within Use Class B1 should be capable of operating in residential areas without having an adverse impact on residential amenity. The Council is concerned, however, that in some instances noisy plant and extended hours of operation can have a harmful effect on amenity. When mixed use schemes are proposed, we will therefore secure appropriate design features and use planning conditions to protect the amenity of existing and future residents.

Off-site provision and payments in lieu

- 1.15 Inclusion of secondary uses as part of a mixed use development offers the best prospect for creating a complementary range of activities across an area with continuous activity and natural surveillance. However, where a secondary use is appropriate for the area and cannot practically be achieved on the site, the Council may accept an off-site contribution to secondary uses in the same area, directly related in scale and kind to the development proposed, and secured by means of a planning obligation. Off-site solutions may be appropriate where developments involve a relatively small addition to floorspace, but it is anticipated that development adding 1,000 sq m (gross) or more should provide for mixed use on-site unless the applicant provides clear evidence that off-site provision of secondary uses is more appropriate.
- 1.16 In the Central London Area (excluding Hatton Garden) and the specified town centres, if an off-site contribution to housing is appropriate, the Council will take into account all related sites when assessing the level of housing provided. The Council will seek additional housing floorspace to match the net addition to non-residential floorspace across all sites, taking into account any non-residential floorspace removed in conjunction with the off-site housing contribution (but also seeking replacement of any existing housing lost as part of each development). For example, an additional 800 sqm of non-residential development without on-site secondary uses could either be matched off-site by the addition of 800 sq m of housing floorspace (with no reduction of existing non-residential floorspace), or matched by the conversion or redevelopment of 400 sq m of non-residential space into 400 sq m of housing.
- 1.17 Exceptionally, where a secondary use is appropriate for the area but cannot be achieved on site, and it is demonstrated to the Council's satisfaction that no alternative site is available in the area for the secondary use, we may accept a payment in lieu of provision, directly related in scale and kind to the development proposed. Financial contributions will relate to the value of the land (or the value of the space above another development) needed to provide the secondary use elsewhere, having regard to the financial viability of the proposed development. More detailed information regarding the calculation of off-site provision and payments in lieu is provided in our Camden Planning Guidance supplementary document.
- 1.18 The Council will adopt a similar approach to off-site contributions and payments-in-lieu in the Hatton Garden area, except that the scale of the contribution sought to housing may be reduced in order to secure a contribution to affordable premises or other support for the jewellery industry – see policy DP13 and the accompanying paragraphs.

Other factors affecting the potential for mixed-use development, and the scale, nature and location of secondary uses

- 1.19 **The character of the development, the site and the area, site size, and the extent of the additional floorspace** – Existing development on or near a development site may limit the potential for the inclusion of secondary uses, particularly the inclusion of housing. A site may be constrained by disturbance or overlooking from other activities and properties nearby. The retention and extension of an existing building on-site (especially a listed building or a building that makes a positive contribution to a conservation area) may prevent the creation of new features such as entrances, windows, staircases and lifts necessary to accommodate a mix of uses. Small site sizes may also limit the potential to include these features. As noted in paragraph 1.15, it may be appropriate for developments involving a relatively small addition to floorspace (under 1,000 sq m gross) to make an off-site contribution to secondary uses.

- 1.20 **The need for an active street frontage and natural surveillance** – Particular secondary uses and arrangements of uses may be sought to promote street activity and natural surveillance where community safety concerns are raised by local characteristics, such as:
- long, unpunctuated street blocks and frontages formed by large buildings;
 - a lack of diversity and domination of the area by a single use;
 - a lack of vitality and a high proportion of vacant premises;
 - low levels of street activity at certain times of the day, evening or week.
- 1.21 **Development economics, financial viability, and particular costs** – We acknowledge that the introduction of secondary uses into a development can have a major impact on development economics in a variety of ways, including the need for additional circulation spaces and stairways, lower rents or capital values associated with some secondary uses, the effect of differential lease periods on future prospects for redevelopment, and investor preferences. Where a proposed development falls significantly short of the Council's expectations in terms of the contribution to secondary uses (whether on-site, off-site, or in the form of a payment-in-lieu), the Council will expect submission of a financial viability appraisal to justify the scale of the secondary uses proposed. In appropriate circumstances, the Council may also seek an independent verification of the appraisal funded by a developer. Further details of how we will consider financial viability in connection with policy DP1 are provided in our Camden Planning Guidance supplementary document.
- 1.22 We also acknowledge that emerging economic conditions and property market trends may alter the viability of the primary or secondary uses, potentially delaying or preventing implementation of some or all parts of a proposal. The Council will take into account the sensitivity of financial viability appraisals to changing market circumstances, and will seek to include appropriate flexibility into planning obligations and phasing arrangements to ensure that a mix of uses can be delivered.
- 1.23 **Specific situations when mixed use development may not be required** – In addition to the general considerations that may limit the potential or scale for the development of a mix of uses or a contribution to secondary uses, there are a number specific types of development and circumstances that could render the inclusion of secondary uses inappropriate:
- given that housing is the priority land-use of the Local Development Framework, where housing is the sole or primary use proposed, the Council may not seek secondary uses unless there is a shortfall of facilities in the area that will be needed for the development (for example, open space or health facilities), or secondary uses are needed to provide an active street frontage (for example, shops in or adjacent to a shopping parade);
 - the Council will not seek housing or other secondary uses where they are not compatible with the primary use, for example where noise levels from an industrial use would compromise residential amenity, or where the incorporation of secondary uses would be precluded by the operational requirements of a specialised use, such as a hospital or healthcare facility, or an academic, research or educational institution;
 - the Council may not seek secondary uses where a development is required to accommodate an existing user on the site (for example, to provide for the expansion of a business or to consolidate a business's activities to a single site), unless the development involves additional floorspace that is surplus to the user's requirements;
 - The Council may not seek secondary uses where a development is publicly funded and is required to accommodate a public facility or service, or for public administration.
- 1.24 **Any other planning objectives considered to be a priority for the site** – The Council recognises that where it seeks other planning benefits from a development or seeks to meet other planning objectives, this may limit the potential of a site to provide a mix of uses generally, or housing in particular. Examples may include the requirement to contribute to funding for transport infrastructure, or the need to prioritise uses such as business, shopping, education, healthcare or research in certain parts of Central London. When negotiating for a contribution to secondary uses, the Council will have regard to other benefits arising from a proposal. The Council will expect costs associated with all aspects of a proposal to be included in any financial viability appraisal, including the costs and returns associated with all uses included in the development, and any expenditure required to meet the terms of a legal agreement.

Further guidance

- 1.25 Further guidance on mixed use developments, particularly in relation to the inclusion of a proportion of housing in such schemes, is set out in our Camden Planning Guidance supplementary document. The Council's Site Allocations document will allocate specific sites for a mix of uses and provide guidance for their future development.

Key evidence and references

- Camden Housing Needs Study Update 2008
- The London Plan (consolidated with Alterations since 2004); Mayor of London; 2008
- Planning Policy Statement (PPS) 1: Delivering Sustainable Development; ODPM; 2005

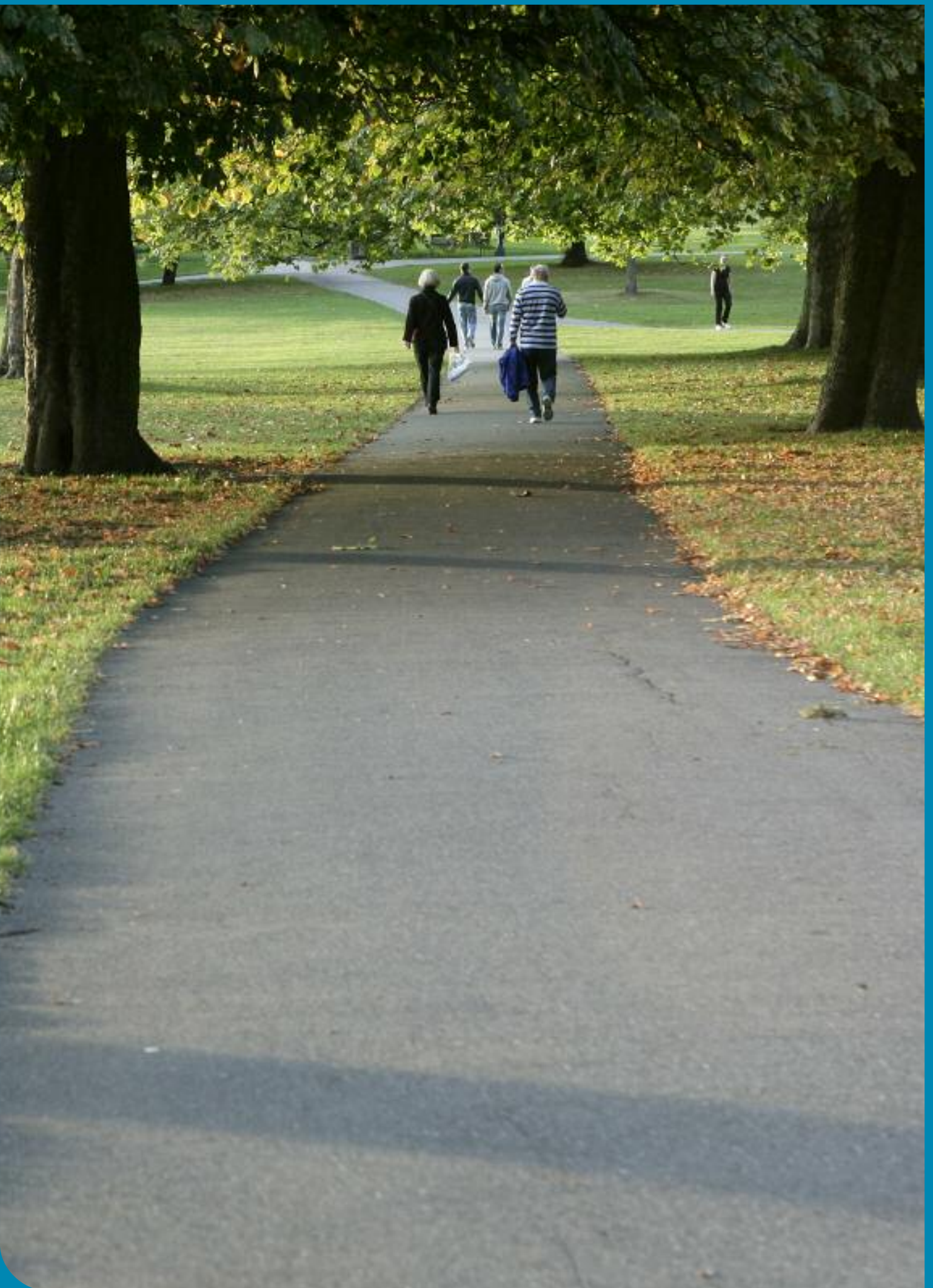




Section 3

A sustainable and attractive Camden – Tackling climate change and improving and protecting Camden’s environment and quality of life

- 2.1 The Core Strategy sets out our overall approach to managing Camden’s growth so that it is sustainable, meets our needs for homes, jobs and services, and protects and enhances quality of life and the borough’s many valued and high quality places. This helps to achieve *A Sustainable Camden that adapts to a growing population* – one of the elements in the vision in the Camden Community Strategy.
- 2.2 This section of Camden Development Policies contributes to delivering the Core Strategy by providing detailed policies that we will use when determining applications for planning permission to ensure that development contributes towards a sustainable and attractive Camden. In particular, it supports the Core Strategy by focussing on:
- promoting sustainable design and construction;
 - reducing our water consumption and the risk of surface water flooding;
 - securing high quality design and conserving our heritage;
 - managing the impact of development and noise and vibration;
 - providing and improving open space, sport and recreation; and
 - our approach to basements and lightwells, improving access, shopfront design and air quality and Camden’s Clear Zone.



Promoting sustainability and tackling climate change

DP22. Promoting sustainable design and construction

- 22.3 Promoting a sustainable Camden is an integral element of our Local Development Framework strategy. Core Strategy policy CS13 – *Tackling climate change through promoting higher environmental standards* sets out a key part of our overall approach to tackling climate change, which includes promoting higher environmental standards in design and construction. Policy DP22 – *Promoting sustainable design and construction* contributes towards delivering the strategy in policy CS13 by providing detail of the sustainability standards we will expect development to meet. DP22 should be read in conjunction with Core Strategy policy CS13 and policy DP23 – *Water*. Core Strategy policy CS11 and policies DP16 to DP21 in this document set out our approach to sustainable transport.
- 22.4 Although the need for sustainable design and construction is not specific to Camden, the borough's highly built-up, inner urban environment means that we face specific environmental issues such as poor air quality and surface water flooding but have fewer options on how we can implement sustainable development and minimise our carbon emissions. The measures we can take to minimise the impacts of climate change and adapt to its effects need to consider, and be appropriate to, Camden's dense and historic character and sensitive environments. They should also take opportunities to build on the borough's past high performance on requiring sustainable measures within developments.
- 22.5 Core Strategy policy CS13 states that the Council will have regard to the costs and feasibility of measures to tackle climate change within developments (paragraph 13.4). This approach also applies to policy DP22. We will also take into account the cumulative costs of not responding to the need to mitigate and adapt to climate change as well as the long term cost savings, such as on energy and water bills, to future occupiers. Measures to tackle climate change are integral in the development process and are a priority of the Council. Therefore they should not be seen as 'add-ons'.



DP POLICY

DP22 – Promoting sustainable design and construction

The Council will require development to incorporate sustainable design and construction measures. Schemes must:

- a) demonstrate how sustainable development principles, including the relevant measures set out in paragraph 22.5 below, have been incorporated into the design and proposed implementation; and
- b) incorporate green or brown roofs and green walls wherever suitable.

The Council will promote and measure sustainable design and construction by:

- c) expecting new build housing to meet Code for Sustainable Homes Level 3 by 2010 and Code Level 4 by 2013 and encouraging Code Level 6 (zero carbon) by 2016.;
- d) expecting developments (except new build) of 500 sq m of residential floorspace or above or 5 or more dwellings to achieve “very good” in EcoHomes assessments prior to 2013 and encouraging “excellent” from 2013;

- e) expecting non-domestic developments of 500sqm of floorspace or above to achieve “very good” in BREEAM assessments and “excellent” from 2016 and encouraging zero carbon from 2019.

The Council will require development to be resilient to climate change by ensuring schemes include appropriate climate change adaptation measures, such as:

- f) summer shading and planting;
- g) limiting run-off;
- h) reducing water consumption;
- i) reducing air pollution; and
- j) not locating vulnerable uses in basements in flood-prone areas.

Sustainable design and construction measures

- 22.6 The construction and occupation of buildings are major consumers of resources and can produce large quantities of waste and carbon emissions. The possibility of sensitively altering or retro-fitting buildings should always be strongly considered before demolition is proposed. All proposals for demolition and reconstruction should be fully justified in terms of the use of resources and energy, and the energy and water efficiency of the existing and proposed buildings. Where the demolition of a building cannot be avoided we will expect either the re-use of materials on-site or the salvage of appropriate materials to enable their re-use off-site. Where materials cannot be salvaged whole and where aggregate is required on-site, this demolished material should be crushed on-site for re-use, with measures taken to minimise dust and noise. Policy DP26 – *Managing the impact of development on occupiers and neighbours* sets out how we will expect development to limit the disturbance from dust due to demolition.
- 22.7 When a building is constructed, the accessibility of its location; its density and mix of uses; its detailed design taking into account the orientation of the site; and the mechanical services and materials chosen can all have a major impact on its energy efficiency. The Council will require all schemes to consider these general sustainable development principles, along with the detailed elements identified in the table below, from the start of the design process. Developments of 5 or more dwellings or 500sqm of any floorspace should address sustainable development principles in their Design and Access statements or in a separate Energy Efficiency Statement, including how these principles have contributed to reductions in carbon dioxide emissions. When justifying the chosen design with regards to sustainability the following appropriate points must be considered:



Design	Fabric/Services
<ul style="list-style-type: none"> • the layout of uses • floorplates size/depth • floor to ceiling heights • location, size and depth of windows • limiting excessive solar gain • reducing the need for artificial lighting • shading methods, both on or around the building • optimising natural ventilation • design for and inclusion of renewable energy technology • impact on existing renewable and low carbon technologies in the area • sustainable urban drainage, including provision of a green or brown roof • adequate storage space for recyclable material, composting where possible • bicycle storage • measures to adapt to climate change (see below) • impact on microclimate 	<ul style="list-style-type: none"> • level of insulation • choice of materials, including - responsible sourcing, re-use and recycled content • air tightness • efficient heating, cooling and lighting systems • effective building management system • the source of energy used • metering • counteracting the heat expelled from plant equipment • enhancement of/provision for biodiversity • efficient water use • re-use of water • educational elements, for example visible meters • on-going management and review

22.8 Our Camden Planning Guidance supplementary document contains detailed guidance on further elements of sustainable design and construction. Please also see Core Strategy policies CS16 – *Improving Camden’s health and well-being* and CS18 – *Dealing with our waste and encouraging recycling*, and policies DP32 – *Air quality and Camden’s Clear Zone* and DP28 – *Noise and vibration* in this document.

Green and brown roofs and green walls

- 22.9 Green and brown roofs and green walls play important roles in achieving a sustainable development. They retain rainfall and slow its movement, provide additional insulation, provide valuable habitat to promote biodiversity, provide opportunities for growing food, reduce the heating up of buildings and the wider city and provide valuable amenity space. They should be designed to enable the benefits that are most suitable for the site. This will include ensuring a sufficient soil depth is provided and selecting the correct substrate and vegetation. The design of green walls should ensure sufficient irrigation for plants without the need for excessive energy consumption for pumping water.
- 22.10 Green and brown roofs can be easily incorporated into a flat roof and, where carefully designed, on a pitched roof. Therefore, it is important that the inclusion of a green or brown roof is considered at the initial design stage. In historic areas where a specific roof form dominates, it may be possible to incorporate a green or brown roof at the rear of buildings where they would not be visible from the street. Further details on our expectation for green and brown roofs and green walls can be found in our Camden Planning Guidance supplementary document.

Sustainable design and construction assessment tools

- 22.11 The government has set environmental targets for all new build dwellings, in *Building a Greener Future: Towards Zero Carbon*, and produced the Code for Sustainable Homes as the tool to assess these targets. BREEAM (Building Research Establishment Environmental Assessment Method) and EcoHomes assessments, which apply to non-residential developments and residential development arising from conversions and changes of use respectively, are other tools which enable us to assess the environmental sustainability of a development.
- 22.12 These assessment tools contain several categories (such as Energy, Water, Materials, Waste, Surface Water, Management, Transport, Land use, Ecology, Health and Well-being, and Pollution). Each category contains credits that can be obtained by implementing a sustainable design or construction measure. All the credits obtained are weighted and added together to achieve the overall score, which relates to a rating of either Pass, Good, Very Good, Excellent or Outstanding.
- 22.13 For developments in Camden it is generally easy to obtain the transport credits in BREEAM and EcoHomes assessments as the borough is well served by public transport and services. The credits in the management category are also reasonably easy to obtain. Therefore, in recent years we have been successfully applying sub-targets, which we developed in consultation with the Building Research Establishment in 2006, within the assessment categories of Energy, Water and Materials. The securing of the credits in these categories is considered to have the greatest environmental benefits. These sub-targets ensure that developments have fully addressed the main issues of sustainable design and construction and climate change relevant to the borough. They can be found in our Camden Planning Guidance supplementary document. The Council will also expect developments to achieve any higher energy/carbon reduction, water and environmental sustainability targets set by the government in the future.
- 22.14 We have been successfully applying a minimum standard of Level 3 for the Code for Sustainable Homes and Very Good for EcoHomes for residential developments of 5 dwellings or more in the borough. As Camden receives some applications for particularly large dwellings with a relatively higher energy and water use, we will apply this approach to developments of 500sqm or more of residential floorspace. For new build housing we will continue to require developments to achieve Level 3 of Code for Sustainable Homes and encourage improvements in environmental sustainability performance in line with the government's timetable towards zero carbon housing. For EcoHomes assessments (for dwellings resulting from conversions and changes of use) we will continue to expect the existing target of Very Good. The government is consulting on ways to improve energy use in existing buildings and, therefore, we will encourage homes resulting from conversions and changes of use to meet a higher EcoHomes target in 2013, in line with the next stage of the government's timetable towards zero carbon for new housing. Works to listed buildings and development within conservation areas should also consider the policies set out in Core Strategy policy CS14 – *Securing high quality design* and DP25 – *Conserving Camden's heritage*.

- 22.15 We will also apply the 500sqm threshold to non-residential developments to ensure all developments of the same size make a minimum contribution to environmental sustainability. If feasible at the time, we will expect non-residential development to achieve a BREEAM rating of 'excellent' from 2016 so that such schemes make an increasing contribution to environmental sustainability, in line with that expected from housing development.
- 22.16 BREEAM and EcoHomes assessments and the Code for Sustainable Homes provide a good overall guide to the environmental sustainability of a development. However, the largest group of credits in the Energy category of these assessments do not consider the energy efficiency of the initial design. To ensure that developments firstly incorporate energy efficient design, we will require schemes to adopt appropriate energy efficiency principles as highlighted in paragraph 22.7 above. An example of energy efficiency principles are the Passivhaus standards. PassivHaus includes:
- very good levels of insulation with minimal thermal bridges;
 - good utilisation of solar and internal heat gains;
 - an excellent level of air tightness; and
 - good indoor air quality, provided by a whole house mechanical ventilation system with highly efficient heat recovery.

The Council will strongly encourage schemes to meet Passivhaus standards. Further details on energy efficient design and principles and PassivHaus are set out in our Camden Planning Guidance supplementary document.

Designing to adapt to climate change

- 22.17 It is predicted that in the future we will experience warmer and wetter winters and hotter and drier summers. These changes could lead to more intense rainfall and local flooding; subsidence due to increased shrinking and expanding of Camden's clay base; poorer air quality; a hotter micro-climate; and increased summer electricity use due to increased demand for cooling. Alongside the measures to reduce the effects of climate change set out above, we will require developments to incorporate appropriate measures to enable occupants to adapt and cope with climatic changes. Measures include:
- natural ventilation;
 - summer shading;
 - planting trees and vegetation;
 - openable windows;
 - the provision of external space; and
 - the inclusion of pervious surfaces to enable water to infiltrate the ground to reduce clay shrinking and flooding.





- 22.18 The Council will discourage the use of air conditioning and excessive plant equipment. In addition to increasing the demand for energy, air conditioning and plant equipment expel heat from a building making the local climate (microclimate) hotter. Where the use of this equipment is considered acceptable by the Council, for example where sterile internal air is required, we will expect development to make a contribution towards cooling the local environment. This could be through the provision of green or brown roofs, green walls and the planting of trees and vegetation, on or off-site. For further details on the methods that can be incorporated within a development to enable it and its occupants to adapt to climate change and on green and brown roofs and green walls, please refer to our Camden Planning Guidance supplementary document. For further details on how to consider microclimate see policy DP26 – *Managing the impact of development on occupiers and neighbours* and Camden Planning Guidance.
- 22.19 Our expectations on designing for water efficiency and addressing extreme rainfall can be found in policy DP23 – *Water*. Policy DP27 – *Basements and lightwells* sets out our expectations for basement development. Our approach to improving Camden's air quality is set out in policy DP26 – *Air quality and Camden's Clear Zone* and Core Strategy policy CS16 – *Improving Camden's health and well-being*. Please see policy DP24 – *Securing high quality design* for further details on other aspects of design.

Key evidence and references

- Towards a Sustainable Camden. Camden' Environmental Sustainability Delivery Plan 2008-2012
- Camden Sustainability Task Force Report on Energy and Energy Efficiency; 2007
- Planning Policy Statement: Planning and Climate Change – Supplement to Planning Policy Statement 1; Communities and Local Government; 2007
- Building A Greener Future; Communities and Local Government; 2006
- Sustainable Design and Construction – Supplementary Planning Guidance; Mayor of London; 2006
- Building A Brighter Future. A Guide to Low Carbon Building Design; Carbon Trust; 2005
- Building Research Establishment Environmental Assessment Method (BREEAM); Building Research Establishment; 2006 and 2008
- Strategy for Sustainable Construction; BERR; 2008
- Definition of Zero Carbon Homes and Non-domestic Buildings Consultation; CLG; 2008
- Heat and energy saving strategy Consultation; Department of Communities and Local Government & Department of Energy and Climate Change; 2009

Improving and protecting our environment and quality of life

DP24. Securing high quality design

- 24.1 Core Strategy policy CS14 – *Promoting high quality places and conserving our heritage* sets out the Council's overall strategy on promoting high quality places, seeking to ensure that Camden's places and buildings are attractive, safe, healthy and easy to use and requiring development to be of the highest standard of design that respects local context and character. Camden has a unique and rich built and natural heritage, with many areas with their own distinct character, created by a variety of elements including building style and layout, history, natural environment including open spaces and gardens, and mix of uses. We have a duty to respect these areas and buildings and, where possible, enhance them when constructing new buildings and in alterations and extensions.
- 24.2 Policy DP24 contributes to implementing the Core Strategy by setting out our detailed approach to the design of new developments and alterations and extensions. These principles will ensure that all parts of Camden's environment are designed to the highest possible standards and contribute to providing a healthy, safe and attractive environment.
- 24.3 The Core Strategy also sets out our approach to other matters related to design, such as tackling climate change through promoting higher standards (CS13), the importance of community safety and security (CS17) and protecting amenity from new development (CS5). Further guidance on design is contained in our Camden Planning Guidance supplementary document.

DP POLICY

DP24 – Securing high quality design

The Council will require all developments, including alterations and extensions to existing buildings, to be of the highest standard of design and will expect developments to consider:

- a) character, setting, context and the form and scale of neighbouring buildings;
- b) the character and proportions of the existing building, where alterations and extensions are proposed;
- c) the quality of materials to be used;
- d) the provision of visually interesting frontages at street level;
- e) the appropriate location for building services equipment;
- f) existing natural features, such as topography and trees;
- g) the provision of appropriate hard and soft landscaping including boundary treatments;
- h) the provision of appropriate amenity space; and
- i) accessibility.



Promoting good design

- 24.4 The Council is committed to design excellence and a key strategic objective of the borough is to promote high quality, sustainable design. This is not just about the aesthetic appearance of the environment, but also about enabling an improved quality of life, equality of opportunity and economic growth. We will therefore apply policy DP24 to ensure that all developments throughout the borough, including alterations and extensions to existing buildings, are of the highest standard of design. In accordance with government guidance in Planning Policy Statement (PPS) 1 – *Delivering Sustainable Development* we will not accept design that is inappropriate to its context or which fails to take opportunities to improve the character and quality of an area and the way that it is used by residents and visitors.
- 24.5 Camden is a densely built-up borough where most development involves the replacement, extension or conversion of existing buildings. Design should respond creatively to its site and its context. This concerns both smaller-scale alterations and extensions and larger developments, the design and layout of which should take into account the pattern and size of blocks, open spaces, gardens and streets in the surrounding area (the ‘urban grain’).
- 24.6 The Council seeks to encourage outstanding architecture and design, both in contemporary and more traditional styles. Innovative design can greatly enhance the built environment and, unless a scheme is within an area of homogenous architectural style that is important to retain, high quality contemporary design will be welcomed. When assessing design, we will take into account government/CABE guidance *By Design – Urban Design in the planning system: towards better practice* and our own Camden Planning Guidance supplementary document.
- 24.7 Development should consider:
- the character and constraints of its site;
 - the prevailing pattern, density and scale of surrounding development;
 - the impact on existing rhythms, symmetries and uniformities in the townscape;
 - the compatibility of materials, their quality, texture, tone and colour;
 - the composition of elevations;
 - the suitability of the proposed design to its intended use;
 - its contribution to public realm, and its impact on views and vistas; and
 - the wider historic environment and buildings, spaces and features of local historic value.
- 24.8 Buildings should be designed to be as sustainable as possible. Environmental design and construction measures are set out in Policy DP22 – *Promoting sustainable design and construction*. Sustainable development also embraces principles of social sustainability which can be addressed by new development which:
- provides comfortable, safe, healthy and accessible space for its users;
 - is fit for purpose and can accommodate future flexibility of use;
 - provides a mix of uses and types of accommodation and provides for a range of needs within the community; and
 - provides sufficient amenity space for the promotion of health and wellbeing.



- 24.9 The re-use of existing buildings preserves the ‘embodied’ energy expended in their original construction, minimises construction waste and reduces the use of new materials. Many historic buildings display qualities that are environmentally sustainable and have directly contributed to their survival, for example the use of durable, natural, locally sourced materials, ‘soft’ construction methods, good room proportions, natural light and ventilation and ease of alteration. The retention and adaptation of existing buildings will be encouraged.
- 24.10 Due to the dense nature of Camden with extensive range and coverage of heritage assets, such as conservation areas, numerous listed buildings and five strategic views and two background views crossing the borough, the Council does not consider that it is practical to identify broad areas either suitable, or not suitable, for tall buildings. In the borough, a site may be suitable for a tall building while adjacent sites are not, due to impact on either views, conservations areas or listed buildings. Indeed, in some cases, suitability for a tall building differs across a single site. Given Camden’s strategic environmental characteristics, the entire borough is considered as being within the ‘sensitive’ category, as defined by the English Heritage/CABE Guidance on Tall Buildings (2007). Tall building proposals in Camden will therefore merit detailed design assessments. As part of the revision of the Camden Planning Guidance SPD further clarity will be provided on tall buildings and design issues in Camden.

Respecting local character

- 24.11 Given the highly built-up nature of Camden, careful consideration of the characteristics of a site, features of local distinctiveness, and the wider context is needed in order to achieve high quality development which integrates into its surroundings.
- 24.12 In order to best preserve and enhance the positive elements of local character within the borough, we need to recognise and understand the factors that create it. Designs for new buildings, and alterations and extensions, should respect the character and appearance of the local area and neighbouring buildings. Within areas of distinctive character, development should reinforce those elements which create the character. Where townscape is particularly uniform attention should be paid to responding closely to the prevailing scale, form and proportions and materials. In areas of low quality or where no pattern prevails, development should improve the quality of an area and give a stronger identity.
- 24.13 Development should not undermine any existing uniformity of a street or ignore patterns or groupings of buildings. Overly large extensions can disfigure a building and upset its proportions. Extensions should therefore be subordinate to the original building in terms of scale and situation unless, exceptionally, it is demonstrated that this is not appropriate given the specific circumstances of the building. Past alterations or extensions to surrounding properties should not necessarily be regarded as a precedent for subsequent proposals for alterations and extensions.
- 24.13 Design and Access statements should include an assessment of local context and character, and set out how the development has been informed by, and responds to it. We have prepared a series of Conservation Area Statements, Appraisals and Management Plans which describe the character and appearance of individual conservation areas and set out how the Council considers each can be conserved and enhanced. These should be used by developers to inform their understanding of the special character of the area, and we will take these into account when assessing development proposals in conservation areas. Development Policy DP25 – *Conserving Camden’s heritage* provides further guidance on the preservation and enhancement of the historic environment.

Detailing and materials

- 24.15 Architectural detailing should be carefully integrated into a building. In new development, detailing should be carefully considered so that it conveys quality of design and creates an attractive and interesting building. Architectural features on existing buildings, such as cornices, mouldings, architraves, porches and chimneys should be retained wherever possible, as their loss can harm a building by eroding its detailing. The insensitive replacement of windows and doors and the cladding and painting of masonry can also spoil the appearance of buildings and can be particularly damaging if the building forms part of a uniform group.
- 24.16 Schemes should incorporate materials of an appropriately high quality. The durability and visual attractiveness of materials will be carefully considered along with their texture, colour and compatibility with existing materials. Alterations and extensions should be carried out in materials that match the original or neighbouring buildings, or, where appropriate, in materials that complement or enhance a building or area.

Contributing to the street frontage

- 24.17 Buildings should be visually interesting at street level, with entrances and windows used to create active frontages, which allow overlooking of public areas, provide a sense of vitality and contribute to making Camden a safer place (see Core Strategy policy CS17). Ground floors should be occupied by active uses and should not turn their back on streets and other public spaces.

Incorporating building services equipment

- 24.18 Building services equipment, such as air cooling, heating, ventilation and extraction systems, lift and mechanical equipment, as well as fire escapes, ancillary plant and ducting should be contained within the envelope of a building or be located in a visually inconspicuous position.

Responding to natural features

- 24.19 New developments should respond to the natural assets of a site and its surroundings, such as slopes and height differences, trees and other vegetation. Extensions and new developments should not cause the loss of any existing natural habitats, including private gardens. Core Strategy policy CS15 – *Protecting and improving our parks and open spaces and encouraging biodiversity* provides further guidance on nature conservation in Camden and the Council's strategy for trees.
- 24.20 Development within rear gardens and other undeveloped areas can often have a significant impact upon the amenity and character of an area. Gardens help shape their local area, provide a setting for buildings and can be important visually. Therefore they can be an important element in the character and identity of an area (its 'sense of place'). We will resist development that occupies an excessive part of a garden, and where there is a loss of garden space which contributes to the character of the townscape.
- 24.21 Development will not be permitted which fails to preserve or is likely to damage trees on a site which make a significant contribution to the character and amenity of an area. Where appropriate the Council will seek to ensure that developments make adequate provision for the planting and growth to maturity of large trees.





Incorporating Landscaping

- 24.22 As with buildings, consideration of context is essential in the design of new hard and soft landscaping. Hard landscape elements (surfaces, boundary treatments etc), and the materials from which they are made, play a significant role in defining the character and attractiveness of a site or area and reinforcing local distinctiveness. New planting can contribute to the attractiveness of a development, soften and balance the impact of buildings and contribute to the biodiversity value of a site. Effective maintenance is often essential to the success of soft landscaping (shrubs, grass etc) and, where appropriate, the Council will expect planting plans to be accompanied by a maintenance schedule. New hard and soft landscaping should be of high quality and should positively respond to its local character.

Providing amenity space

- 24.23 Private outdoor amenity space can add significantly to resident's quality of life and applicants are therefore encouraged to explore all options for the provision of new private outdoor space. Gardens, balconies and roof terraces are greatly valued and can be especially important for families. However, the densely built up nature of the borough means that the provision of private amenity space can be challenging, and the Council will require that the residential amenity of neighbours be preserved, in accordance with policy DP26 – *Managing the impact of development on occupiers and neighbours* and Core Strategy policy CS5 – *Managing the impact of growth and development*.

Accessibility

- 24.24 In line with policy DP29 – *Improving access* the Council will expect all buildings and places to meet the highest practicable standards of access and inclusion. Any adaptation of existing buildings must therefore address this issue and respond to access needs whilst ensuring that alterations are sympathetic to the building's character and appearance. Policy DP25 – *Conserving Camden's heritage* provides further guidance on providing access to listed buildings.

Key evidence and references

- By Design: Urban Design in the Planning System – Towards Better Practice; DETR/CABE; 2000
- Planning Policy Statement (PPS) 1 – Delivering Sustainable Development, 2005
- Planning Policy Statement (PPS) 12 – Local Spatial Planning, 2008
- Making design policy work, CABE; 2005
- The London Plan (consolidated with alterations since 2004); Mayor of London; 2008
- Building in Context, CABE/English Heritage, 2002
- Tree and Woodland Framework for London, Mayor of London, 2005

DP26. Managing the impact of development on occupiers and neighbours

- 26.1 Camden's Core Strategy seeks to sustainably manage growth so that it takes place in the most appropriate locations and meets our needs while continuing to conserve and enhance the features that make Camden such an attractive place to live, work and visit (see policy CS1). Promoting and protecting high standards of amenity is a key element in this and will be a major consideration when the Council assesses development proposals. Core Strategy policies CS5 – *Managing the impact of growth and development* and CS14 – *Promoting high quality places and conserving our heritage* set out our overall approach to protecting the amenity of Camden's residents, workers and visitors, a major factor in people's quality of life. Policy DP26 contributes to the implementation of the Core Strategy by making sure that the impact of a development on occupiers and neighbours is fully considered.

DP POLICY

DP26 – Managing the impact of development on occupiers and neighbours

The Council will protect the quality of life of occupiers and neighbours by only granting permission for development that does not cause harm to amenity. The factors we will consider include:

- a) visual privacy and overlooking;
- b) overshadowing and outlook;
- c) sunlight, daylight and artificial light levels;
- d) noise and vibration levels;
- e) odour, fumes and dust;
- f) microclimate;
- g) the inclusion of appropriate attenuation measures.

We will also require developments to provide:

- h) an acceptable standard of accommodation in terms of internal arrangements, dwelling and room sizes and amenity space;
- i) facilities for the storage, recycling and disposal of waste;
- j) facilities for bicycle storage; and
- k) outdoor space for private or communal amenity space, wherever practical.

- 26.2 Development should avoid harmful effects on the amenity of existing and future occupiers and to nearby properties. When assessing proposals the Council will take account the considerations set out in policy DP26. The Council's Camden Planning Guidance supplementary document contains detailed guidance on the elements of amenity.

Visual privacy, overlooking, overshadowing, outlook, sunlight and daylight

- 26.3 A development's impact on visual privacy, overlooking, overshadowing, outlook, access to daylight and sunlight and disturbance from artificial light can be influenced by its design and layout, the distance between properties, the vertical levels of onlookers or occupiers and the angle of views. These issues will also affect the amenity of the new occupiers. We will expect that these elements are considered at the design stage of a scheme to prevent potential negative impacts of the development on occupiers and neighbours. To assess whether acceptable levels of daylight and sunlight are available to habitable spaces, the Council will take into account the standards recommended in the British Research Establishment's Site Layout Planning for Daylight and Sunlight – *A Guide to Good Practice* (1991).

Artificial lighting levels

- 26.4 Lighting creates a sense of safety and can enable activities in the evenings and at night. It can be used to highlight landmark buildings and add vitality to our streets. Lighting can increase the potential for natural surveillance and, where used correctly, can reduce the opportunity for criminal activity and increase the likelihood of it being challenged and/or reported. However, poorly designed internal and external lighting or lighting that operates for an excessive period of time is a form of pollution that can harm the quality of life for those living nearby, affect wildlife and waste energy. Camden's dense character means that light pollution can be a bigger problem in the borough than in lower density areas where uses are not so close together. For example, lighting from conservatories can affect neighbours living above, as well as to the sides and rear, and the lighting of advertisements can affect people living nearby. Glare and light spillage from poorly designed lighting can make it less easy to see things at night and effect wildlife as well as people. Lighting should only illuminate the intended area and not affect or impact on its surroundings. Schemes involving floodlighting and developments in sensitive areas, such as adjacent to sites of nature conservation importance, should employ a specialist lighting engineer accredited by the Institute of Lighting Engineers to ensure that artificial lighting causes minimal disturbance to occupiers and wildlife. For further details on lighting and occupiers and biodiversity please see our Camden Planning Guidance supplementary document.

Noise and vibration

- 26.5 Noise/vibration pollution has a major effect on amenity and health and can be a particularly significant issue in Camden given the borough's dense urban nature. More detail on how to prevent disturbance from noise and vibration, including the requirement for mitigation measures can be found in policy DP28.

Odours, fumes and dust

- 26.6 Camden suffers from extremely poor air quality which has a harmful impact on health and the environment. More detail on how the Council is tackling poor air quality can be found in policy DP32. Camden Planning Guidance provides information on how developments should be designed to prevent occupants from being exposed to air pollution, including mitigation measures.





- 26.7 Odours, fumes and dust can be generated from commercial cooking, industrial process and construction and demolition. We will require all development likely to generate odours to prevent them from being a nuisance by installing appropriate extraction equipment and other mitigation measures. Further details on mitigation measures and where extraction equipment should be located can be found in Camden Planning Guidance. Further details on limiting noise from extraction equipment can be found in DP28. The Council will limit the disturbance from dust due to construction and demolition by expecting developers and their contractors to follow the London Councils' Best Practise Guidance *The control of dust and emissions from construction and demolition*. We will also expect developers to sign up to the Considerate Constructors Scheme. Details of how these will be implemented should be provided in a Construction Management Plan. Please see below for further details on Construction Management Plans.

Microclimate

- 26.8 Developments, especially when large, can alter the local climate. For example, a light coloured building that reflects heat will stay cool on the inside and the outside, whereas a dark building will absorb heat during the day to raise internal temperatures and slowly release this heat as the temperature cools, keeping the local air temperature warmer. Buildings can also affect the flow of air and cause wind tunnels. All developments should consider local topography and the local microclimate in their design. Developments large enough to alter the local climate will be required to submit a statement demonstrating how the design has considered local conditions. Detail of what is expected in such a statement can be found in the Camden Planning Guidance.

Attenuation measures and Construction Management Plans

- 26.9 Most potential negative effects of a development can be designed out or prevented through mitigation measures. For example, appropriately located and insulated extraction equipment can prevent nuisance caused by strong odours and fumes. An air tight building with mechanical ventilation and good insulation can make living adjacent to railways and busy roads acceptable with regards to noise, vibration and internal air quality. We will require any attenuation measures to be identified prior to planning permission being granted and secured for the lifetime of the development.

26.10 Disturbance from development can also occur during the construction phase. Measures required to reduce the impact of demolition, excavation and construction works must be outlined in a Construction Management Plan. We will require Construction Management Plans to identify the potential impacts of the construction phase of the development and state how any potential negative impacts will be mitigated. Construction Management Plans may be sought for:

- major developments;
- basement developments;
- developments involving listed buildings or adjacent to listed buildings;
- developments that could affect wildlife;
- developments on sites with poor or limited access; and
- developments that could cause significant disturbance due to their location or the anticipated length of the, demolition, excavation or construction period.

For further details on construction management plans please refer to our Camden Planning Guidance supplementary. Please see policy DP27 for more on our approach to basements.

Standards of accommodation

26.11 The size of a dwelling and its rooms, as well as its layout, will have an impact on the amenity of its occupiers. Residential standards and guidance are contained in our Camden Planning Guidance supplementary document. Policy DP6 outlines our approach to Lifetime Homes and further detail can be found in Camden Planning Guidance. Details on our approach to providing facilities for waste and for bicycle storage can also be found in Camden Planning Guidance. Details on our requirements for the provision of cycle parking can be found in DP18 – *Parking standards and limiting the availability of car parking*.

26.12 Outdoor amenity space provides an important resource for residents, which is particularly important in Camden given the borough's dense urban environment. It can include private provision such as gardens, courtyards and balconies, as well as communal gardens and roof terraces. The Council will expect the provision of gardens in appropriate developments, and particularly in schemes providing larger homes suitable for families. However, we recognise that in many parts of the borough this will not be realistic or appropriate. In these locations, the provision of alternative outdoor amenity space, for example, balconies, roof gardens or communal space will be expected. These amenity spaces should be designed to limit noise and disturbance of other occupiers and so not to unacceptably reduce the privacy of other occupiers and neighbours.

Key evidence and references

- Air Quality Action Plan 2009-13
- Camden's Noise Strategy, 2002
- Planning Policy Guidance (PPG) 24: Planning and Noise
- The London Plan (consolidated with alterations since 2004); Mayor of London; 2008
- Cleaning London's Air: The Mayor's Air Quality Strategy (2002)
- Sounder City – The Mayor's Ambient Noise Strategy; Mayor of London; 2004
- Institution of Lighting Engineers web-site, <http://www.ile.org.uk>

DP28. Noise and vibration

- 28.1 Noise and vibration can have a major effect on amenity and health and therefore quality of life. Camden's high density and mixed-use nature means that disturbance from noise and vibration is a particularly important issue in the borough. Camden's Core Strategy recognises the importance of this issue for Camden's residents and policy DP28 contributes to implementing a number of Core Strategy policies, including CS5 – *Managing the impact of growth and development*, CS9 – *Achieving a successful Central London*, CS11 – *Promoting sustainable and efficient travel* and CS16 – *Improving Camden's health and well-being*.

DP POLICY

DP28 – Noise and vibration

The Council will seek to ensure that noise and vibration is controlled and managed and will not grant planning permission for:

- a) development likely to generate noise pollution; or
- b) development sensitive to noise in locations with noise pollution, unless appropriate attenuation measures are provided.

Development that exceeds Camden's Noise and Vibration Thresholds will not be permitted.

The Council will only grant permission for plant or machinery if it can be operated without cause harm to amenity and does not exceed our noise thresholds.

The Council will seek to minimise the impact on local amenity from the demolition and construction phases of development. Where these phases are likely to cause harm, conditions and planning obligations may be used to minimise the impact.

- 28.2 The effect of noise and vibration can be minimised by separating uses sensitive to noise from development that generates noise and by taking measures to reduce any impact. Noise sensitive development includes housing, schools and hospitals as well as offices, workshops and open spaces, while noise is generated by rail, road and air traffic, industry, entertainment (e.g. nightclubs, restaurants and bars) and other uses.
- 28.3 The Council will only grant planning permission for development sensitive to noise in locations that experience noise pollution, and for development likely to generate noise pollution, if appropriate attenuation measures are taken, such as double-glazing. Planning permission will not be granted for development sensitive to noise in locations that have unacceptable levels of noise. Where uses sensitive to noise are proposed close to an existing source of noise or when development that generates noise is proposed, the Council will require an acoustic report to ensure compliance with PPG24: *Planning and noise*. A condition will be imposed to require that the plant and equipment which may be a source of noise pollution is kept working efficiently and within the required noise limits and time restrictions. Conditions may also be imposed to ensure that attenuation measures are kept in place and effective throughout the life of the development.
- 28.4 In assessing applications, we will have regard to the Noise and Vibration Thresholds, set out below. These represent an interpretation of the standards in PPG24 and include an evening period in addition to the day and night standards contained in the PPG, which provide a greater degree of control over noise and vibration during a period when noise is often an issue in the borough.

Table A: Noise levels on residential sites adjoining railways and roads at which planning permission will not be granted

Noise description and location of measurement	Period	Time	Sites adjoining railways	Sites adjoining roads
Noise at 1 metre external to a sensitive façade	Day	0700-1900	74 dB L_{Aeq} 12h	72 dB L_{Aeq} 12h
Noise at 1 metre external to a sensitive façade	Evening	1900-2300	74 dB L_{Aeq} 4h	72 dB L_{Aeq} 4h
Noise at 1 metre external to a sensitive façade	Night	2300-0700	66 dB L_{Aeq} 8h	66 dB L_{Aeq} 8h

Table B: Noise levels on residential streets adjoining railways and roads at and above which attenuation measures will be required

Noise description and location of measurement	Period	Time	Sites adjoining railways	Sites adjoining roads
Noise at 1 metre external to a sensitive façade	Day	0700-1900	65 dB L_{Aeq} 12h	62 dB L_{Aeq} 12h
Noise at 1 metre external to a sensitive façade	Evening	1900-2300	60 dB L_{Aeq} 4h	57 dB L_{Aeq} 4h
Noise at 1 metre external to a sensitive façade	Night	2300-0700	55 dB L_{Aeq} 1h	52 dB L_{Aeq} 1h
Individual noise events several times an hour	Night	2300-0700	>82 dB L_{Amax} (S time weighting)	>82 dB L_{AMAX} (S time weighting)

Table C: Vibration levels on residential sites adjoining railways and roads at which planning permission will not be granted

Vibration description and location of measurement	Period	Time	Vibration levels
Vibration inside critical areas such as a hospital operating theatre	Day, evening and night	0000-2400	0.1 VDV ms ^{-1.75}
Vibration inside dwellings	Day and evening	0700-2300	0.2 to 0.4 VDV ms ^{-1.75}
Vibration inside dwellings	Night	2300-0700	0.13 VDV ms ^{-1.75}
Vibration inside offices	Day, evening and night	0000-2400	0.4 VDV ms ^{-1.75}
Vibration inside workshops	Day, evening and night	0000-2400	0.8 VDV ms ^{-1.75}

Where dwellings may be affected by ground-borne regenerated noise internally from, for example, railways or underground trains within tunnels, noise levels within the rooms should not be greater than 35dB(A)_{max}

Table D: Noise levels from places of entertainment on adjoining residential sites at which planning permission will not be granted

Noise description and measurement location	Period	Time	Sites adjoining places of entertainment
Noise at 1 metre external to a sensitive façade	Day and evening	0700-2300	L_{Aeq} 5m shall not increase by more than 5dB*
Noise at 1 metre external to a sensitive façade	Night	2300-0700	L_{Aeq} 5m shall not increase by more than 3dB*
Noise inside any living room of any noise sensitive premises, with the windows open or closed	Night	2300-0700	L_{Aeq} 5m (in the 63Hz Octave band measured using the 'fast' time constant) should show no increase in dB*

* As compared to the same measure, from the same position, and over a comparable period, with no entertainment taking place

Table E: Noise levels from plant and machinery at which planning permission will not be granted

Noise description and location of measurement	Period	Time	Noise level
Noise at 1 metre external to a sensitive façade	Day, evening and night	0000-2400	5dB(A) <LA90
Noise that has a distinguishable discrete continuous note (whine, hiss, screech, hum) at 1 metre external to a sensitive façade.	Day, evening and night	0000-2400	10dB(A) <LA90
Noise that has distinct impulses (bangs, clicks, clatters, thumps) at 1 metre external to a sensitive façade.	Day, evening and night	0000-2400	10dB(A) <LA90
Noise at 1 metre external to sensitive façade where LA90>60dB	Day, evening and night	0000-2400	55dBL $_{Aeq}$

Key evidence and references

- Camden's Noise Strategy, 2002
- The London Plan (Consolidated with Alterations since 2004), 2008
- Planning Policy Guidance 24: Planning and noise

DP29. Improving access

- 29.1 Part of achieving the Community Strategy vision of making Camden a borough of opportunity is making sure everyone has access to important facilities, such as housing, jobs, educational opportunities and community facilities. Good access benefits everyone. However, many people are disadvantaged by poor access to facilities and buildings and vulnerable and disadvantaged groups, such as the elderly and disabled people, can be particularly affected. Poor access can also be caused by difficulties in using the facilities themselves.
- 29.2 Policy DP29 contributes to the implementation of Core Strategy policy CS14 – *Promoting high quality places and conserving our heritage* which seeks the highest standards of access in all buildings and places. It also helps to deliver elements of policies CS1 – *Distribution of growth*, CS5 – *Managing the impact of growth and development* and CS11 – *Promoting sustainable and efficient travel*.

DP POLICY

DP29 – Improving access

The Council will seek to promote fair access and remove the barriers that prevent people from accessing facilities and opportunities. We will:

- a) expect all buildings and places meet the highest practicable standards of access and inclusion;
- b) require buildings and spaces that the public may use to be designed to be as accessible as possible;
- c) expect facilities to be located in the most accessible parts of the borough;
- d) expect spaces between buildings to be fully accessible;
- e) encourage accessible public transport;
- f) secure car parking for disabled people; and
- g) secure accessible homes.

- 29.3 Many people experience difficulties in using buildings and spaces as their access needs are ignored or considered too late in the development process to ensure the removal of barriers that can exclude or segregate. We will seek to make sure that any expansion of activities that are likely to lead to a significant increase in travel demand are located in the parts of the borough that can be most easily reached by walking, cycling and public transport.
- 29.4 The Council will require new buildings and spaces that the public may use to be fully accessible to promote equality of opportunity. As accessibility is influenced by perceptions as well as physical factors, buildings should also be designed to appear, as well as be, accessible. We will require a Design and Access Statement for new developments of public buildings and spaces to show how the principles of inclusive design, including the specific needs of disabled people, have been integrated into the proposed development, and how inclusion will be maintained and managed.
- 29.5 The Council will balance the needs of people with mobility difficulties with the interests of conservation and preservation. We will seek sensitive design solutions to achieve access for all to, and within, listed buildings that require public access. Policy DP25 – *Conserving Camden's heritage* sets out our detailed approach to development affecting listed buildings.



- 29.6 Making sure that people can move through streets and places, easily and safely is as important as making the buildings themselves accessible. The Council will seek improvements for pedestrians and people with disabilities to ensure good quality access and circulation arrangements, including improvements to existing routes and footways. The Camden Streetscape Design Manual and our Camden Planning Guidance supplementary document provide further more detailed guidance on this issue.
- 29.7 The Council aims to increase the attractiveness of public transport by creating networks which make people feel safe, link to all parts of the borough and enable use by people with mobility difficulties. The provision of public transport allows independence in travel choices and is vital to those without access to, or without the means to use, a car. We are committed to a number of public transport improvement schemes to increase public transport capacity and to improve accessibility throughout the borough. The Core Strategy gives further detail on the key transport infrastructure proposals that are being promoted in Camden, in particular in policies CS2 – *Growth areas* and CS11 – *Promoting sustainable and efficient travel* and Core Strategy Appendix 1 – *Key Infrastructure Programmes and Projects*.
- 29.8 While the Council encourages public transport and car-free schemes, in line with sustainable development objectives, we recognise that some disabled people rely on private motorised transport. We will therefore require relevant planning applications to demonstrate how the needs of disabled drivers have been addressed. We will also welcome disabled parking and drop-off facilities which are integrated with public transport facilities.
- 29.9 The Council believes that new housing should allow less mobile residents to live as independently as possible. Accessible homes give them greater choice about where to live and mean people are less likely to need to move when they become less mobile. The Council will therefore seek to secure ‘lifetime homes’, which are designed to meet the differing requirements created by changing life circumstances, and housing accessible to wheelchair users. Detail on the Council’s approach to lifetime homes and wheelchair housing is set out in policy DP6 – *Lifetime homes and wheelchair homes*.

Key evidence and references

- The London Plan (consolidated with changes since 2004); Mayor of London; 2008
- Camden Streetscape Design Manual
- Easy Access to Historic Buildings, English Heritage, 2004